

STATE OF ILLINOIS  
DEPARTMENT OF TRANSPORTATION

F.A.I. RTE.	SECTION	COUNTY	TOTAL SHEETS	SHEET NO.
55	D6 PATCHING 2017-5	MONT/SANG	6	1
		ILLINOIS	CONTRACT NO. 72J32	

FOR INDEX OF SHEETS, SEE SHEET NO. 2

# PROPOSED IMPROVEMENTS

FAI 55 (I 55)  
D6 PATCHING 2017-5  
PATCHING

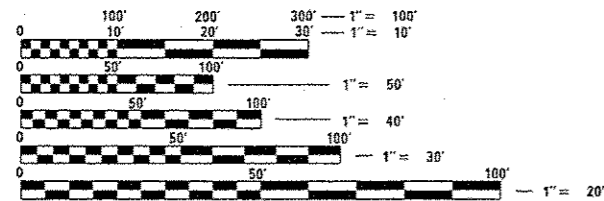
MONT/SANG. CO

C-96-070-16

MONTGOMERY COUNTY

MONTGOMERY CO.  
ADT = 14,000  
SU = 1650  
MU = 4,800

SANGAMON CO.  
ADT = 22,400  
SU = 2,100  
MU = 4,200

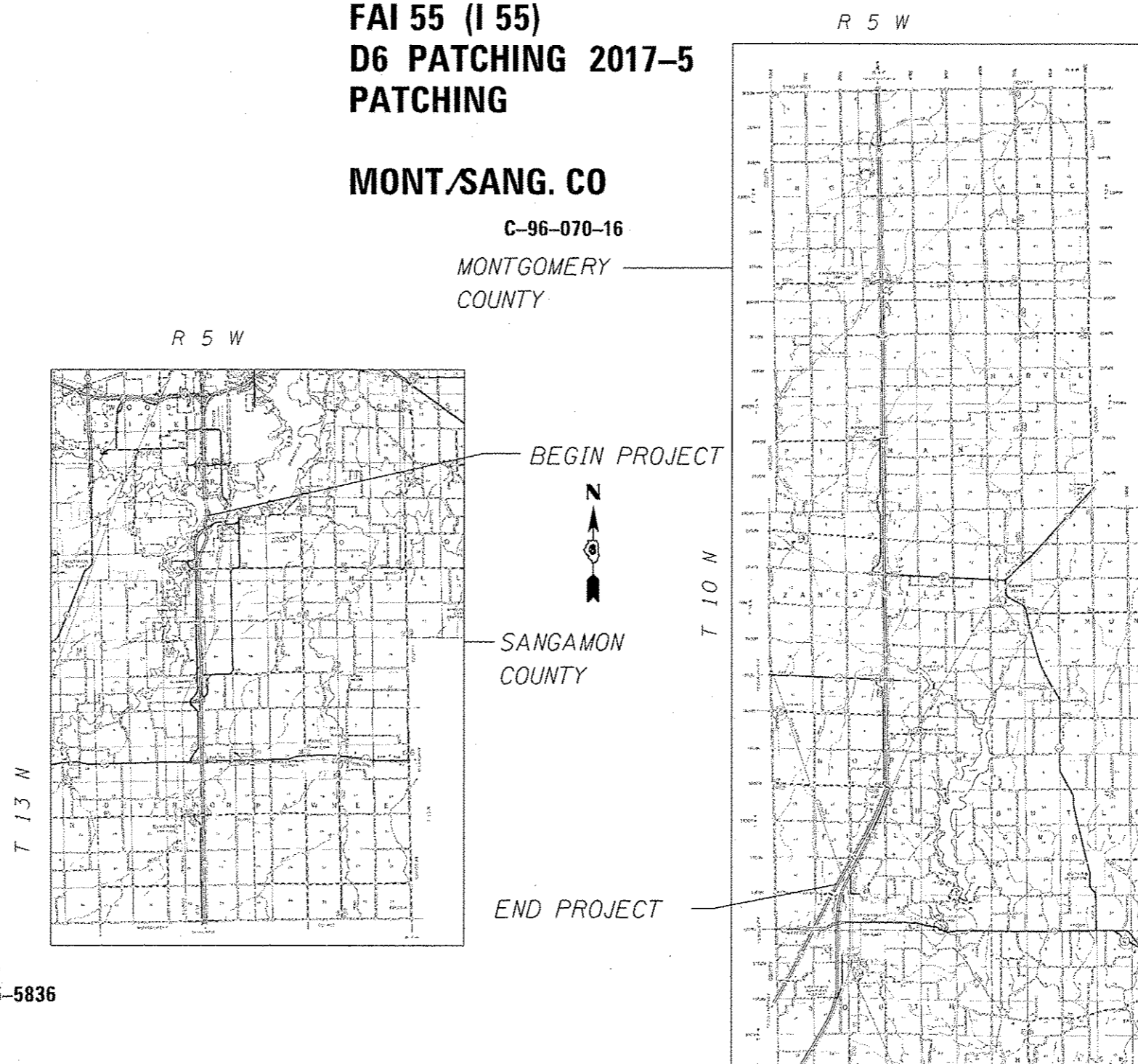


FULL SIZE PLANS HAVE BEEN PREPARED USING STANDARD ENGINEERING SCALES. REDUCED SIZED PLANS WILL NOT CONFORM TO STANDARD SCALES. IN MAKING MEASUREMENTS ON REDUCED PLANS, THE ABOVE SCALES MAY BE USED.

J.U.L.I.E.  
JOINT UTILITY LOCATION INFORMATION FOR EXCAVATION  
1-800-892-0123  
QR 811

PROJECT ENGINEER : MIKE IRWIN - (217)524-7765  
PROJECT MANAGER : MARK BRANHAM - (217)785-5836

CONTRACT NO. 72J32



LOCATION OF SECTION INDICATED THUS: - [black rectangle] -

STATE OF ILLINOIS  
DEPARTMENT OF TRANSPORTATION

SUBMITTED *August 23 2016*

*[Signature]*  
REGION FOUR ENGINEER

*Sept 20 2016*  
*[Signature]*  
ENGINEER OF DESIGN AND ENVIRONMENT

*Sept 20 2016*  
*[Signature]*  
DIRECTOR OF HIGHWAYS, CHIEF ENGINEER

PRINTED BY THE AUTHORITY OF THE STATE OF ILLINOIS

## INDEX OF SHEETS

SHEET NO.	DESCRIPTION
1.	COVER SHEET
2.	INDEX OF SHEETS, STANDARDS, GENERAL NOTES & SIGNATURE
3.	SUMMARY OF QUANTITIES
4.	PATCHING SCHEDULE
5.	PROJECT LOCATION MAP
6.	PROJECT TYPICAL SECTIONS

## STANDARDS

STANDARD NO.	DESCRIPTION
442001-04	CLASS A PATCHES
442101-07	CLASS B PATCHES
701101-05	OFF-RD OPERATIONS, MULTILANE, 15' TO 24" FROM EDGE OF PAVEMENT
701106-02	OFF-RD OPERATIONS, MULTILANE, MORE THAN 15" AWAY
701400-09	APPROACH TO LANE CLOSURE, FREEWAY/EXPRESSWAY
701401-10	LANE CLOSURE, FREEWAY/EXPRESSWAY
701411-09	LANE CLOSURE, MULTILANE AT ENTRANCE OR EXIT RAMP FOR SPEEDS 45 MPH
701446-08	TWO LANE CLOSURE, FREEWAY/EXPRESSWAY
701456-04	PARTIAL EXIT RAMP CLOSURE, FREEWAY/EXPRESSWAY
701901-06	TRAFFIC CONTROL DEVICES

MIXTURE REQUIREMENTS		
THE FOLLOWING MIXTURE REQUIREMENTS ARE APPLICABLE FOR THIS PROJECT		
LOCATION:	SHOULDER REPAIR	SHOULDER REPAIR
MIXTURE USE(S):	LOWER LIFTS	TOP 2"
AC/PG:	PG 64-22	PG 64-22
DESIGN AIR VOIDS:	4.0% @ N50	4.0% @ N50
MIXTURE COMPOSITION:	IL 19.0	IL 9.5
FRICTION AGGREGATE:	N/A	MIX "C"
QUALITY MANAGEMENT	QC/QA	QC/QA

STATE OF ILLINOIS DEPARTMENT OF TRANSPORTATION DIVISION OF HIGHWAYS DISTRICT 6			
EXAMINED	August 15 <sup>th</sup>	20	16
	<i>John C. Wynn</i> ENGINEER OF OPERATIONS		
EXAMINED	July 13	20	16
	<i>Ron Chamberlain</i> ENGINEER OF PROJECT IMPLEMENTATION		
EXAMINED	August 10	20	16
	<i>Jeffrey P. Meyer</i> ENGINEER OF PROGRAM DEVELOPMENT		

FILE NAME *	USER NAME * branhama	DESIGNED -	REVISED -	<b>STATE OF ILLINOIS DEPARTMENT OF TRANSPORTATION</b>	<b>INDEX OF SHEETS, STANDARDS GENERAL NOTES, SIGNATURES</b>	F.A.I. RTE.	SECTION	COUNTY	TOTAL SHEETS	SHEET NO.
C:\projects\72J32 - I-55 - CLASS A & B	PATCHING - MONTGOMERY-SANGAMON CO\PLANS\05	DRAWN - 2-gennet	REVISOR -			55	06 PATCHING 2017-5	MONT/SANG	6	2
Defaults	PLOT SCALE * 40.0000 / in.	CHECKED -	REVISED -			SCALE: _____ SHEET _____ OF _____ SHEETS STA. _____ TO STA. _____		CONTRACT NO. 72J32		[ILLINOIS] FED. AID PROJECT
	PLOT DATE = 8/16/2016	DATE -	REVISED -							

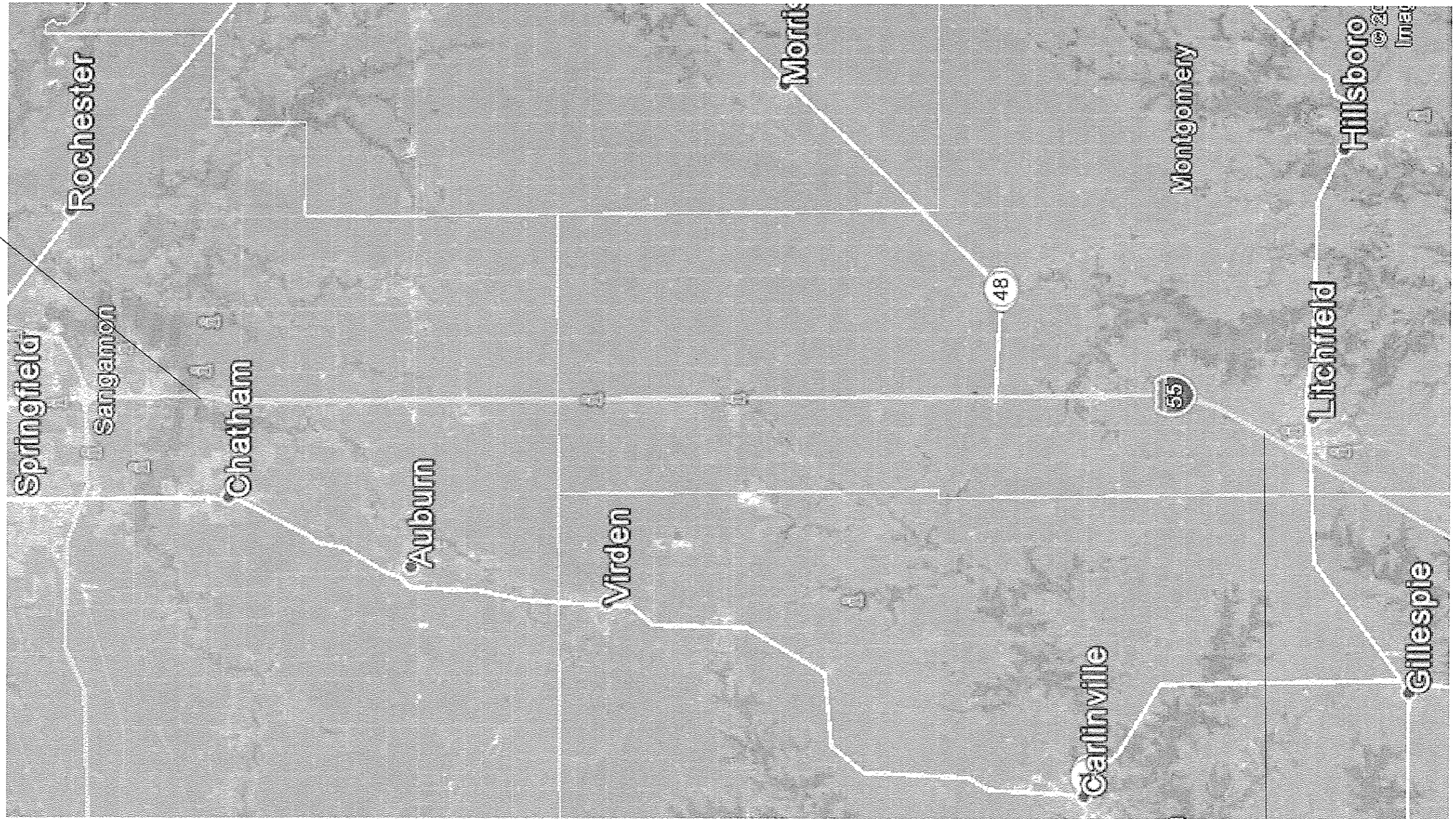
CODE NO.	ITEM	UNIT	TOTAL QUANTITY	0-01623-6010	0-01623-6010
				100% STATE	100% STATE
				MONTGOMERY	SANGAMON
				ROADWAY	ROADWAY
				0005	0005
				RURAL	RURAL
44200050	WELDED WIRE REINFORCEMENT	SQ YD	581.3	373.4	207.9
44200610	CLASS A PATCHES, TYPE II, 13 INCH	SQ YD	181.3	40	141.3
44200614	CLASS A PATCHES, TYPE IV, 13 INCH	SQ YD	1660.0	53.3	1606.7
44201007	CLASS B PATCHES, TYPE II, 13 INCH	SQ YD	540.4	110.2	430.2
44201011	CLASS B PATCHES, TYPE III, 13 INCH	SQ YD	74.6	0.0	74.6
44201013	CLASS B PATCHES, TYPE IV, 13 INCH	SQ YD	506.7	373.4	133.3
44201299	DOWEL BARS 1 1/2"	EACH	854.0	224.0	630.0
44213000	PATCHING REINFORCEMENT	SQ YD	1841.3	93.3	1748.0
44213200	SAW CUTS	FOOT	8843.0	1976.0	6867.0
44213204	TIE BARS 3/4"	EACH	1465.0	234.0	1231.0
67100100	MOBILIZATION	LSUM	1.0	0.5	0.5
70100420	TRAFFIC CONTROL AND PROTECTION, STANDARD 701411	EACH	16.0	8.0	8.0
70100800	TRAFFIC CONTROL AND PROTECTION, STANDARD 701401	LSUM	1.0	0.5	0.5
70100815	TRAFFIC CONTROL AND PROTECTION, STANDARD 701446	LSUM	1.0	0.0	1.0
70100825	TRAFFIC CONTROL AND PROTECTION, STANDARD 701456	LSUM	1.0	0.5	0.5
70103815	TRAFFIC CONTROL SURVEILLANCE	CAL DA	30.0	15.0	15.0
70200100	NIGHTTIME WORK ZONE LIGHTING	LSUM	1.0	0.5	0.5
70106800	CHANGEABLE MESSAGE SIGN	CAL MO	4.0	2.0	2.0
X4820110	HOT-MIX ASPHALT SHOULDER REMOVAL AND REPLACEMENT (SPECIAL)	SQ YD	100.0	50.0	50.0
X7010410	SPEED DISPLAY TRAILER	CAL MO	1.0	0.5	0.5
44200612	CLASS A PATCHES, TYPE III, 13 INCH	SQ YD	30.0	0.0	30.0

20





BEGIN PROJECT

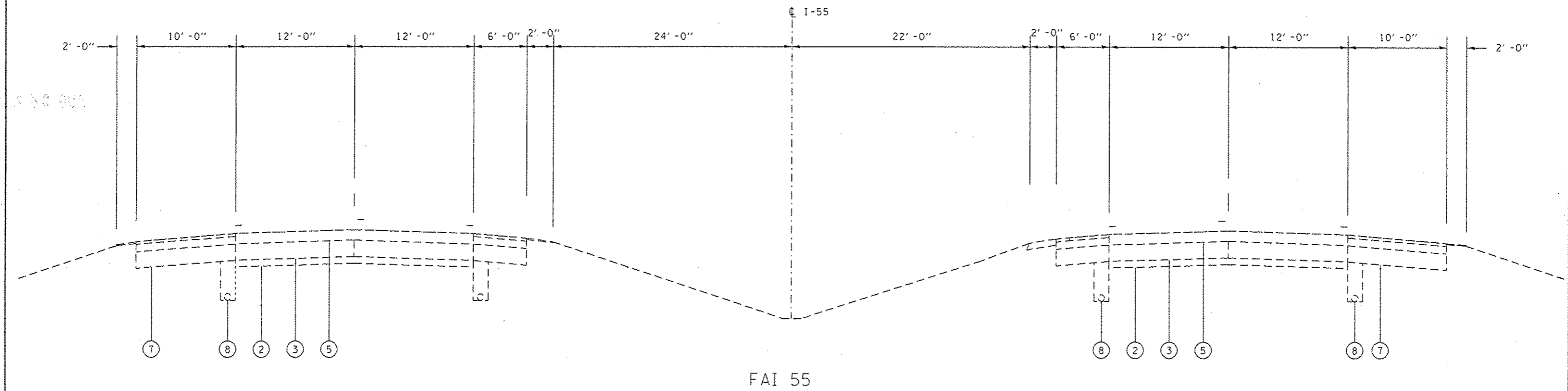


END PROJECT

FILE NAME * C:\projects\72J32 - I-55 - CLASS A & B	USER NAME * branhoe	DESIGNED - _____	REVISED - _____	<b>STATE OF ILLINOIS DEPARTMENT OF TRANSPORTATION</b>	<b>LOCATION MAP</b>	F.A.I. RTE.	SECTION	COUNTY	TOTAL SHEETS	SHEET NO.
	PATCHING - MONTGOMERY-SANGAMON CO\PLANS\0706\AWH\1-4-plans.dgn	CHECKED - _____	REVISED - _____			55	06 PATCHING 2017-5	MONT/SANG	6	4
	PLOT SCALE * 40.0000' / in.	DATE - _____	REVISED - _____			SCALE: _____ SHEET _____ OF _____ SHEETS STA. _____ TO STA. _____		CONTRACT NO. 72J32		ILLINOIS FED. AID PROJECT

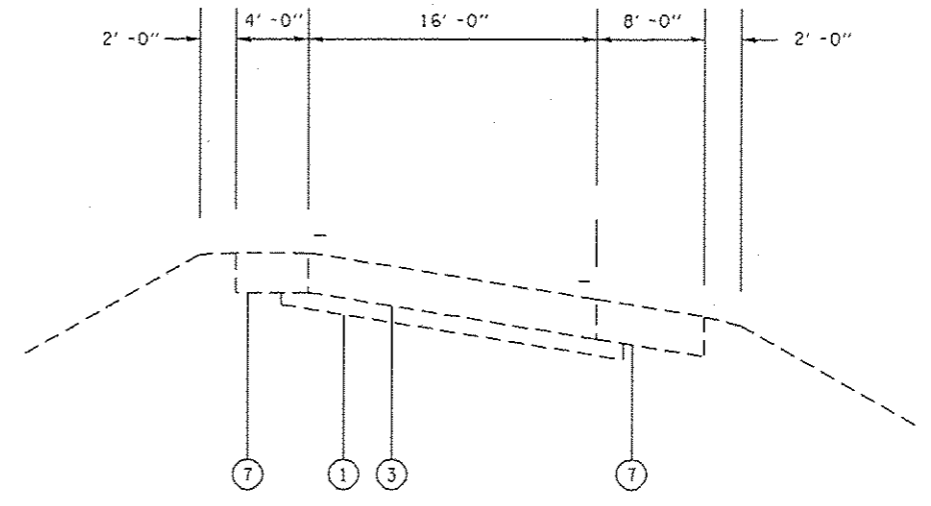






**LEGEND**

- ① EX STABILIZED SUB-BASE 4"
- ② EX AGGREGATE SUB-BASE 4"
- ③ EX PCC PAVEMENT 9"
- ⑤ EX HOT -MIX ASPHALT SURFACE COURSE (VARIABLE THICKNESS)
- ⑥ EX AGGREGAE SHOULDERS
- ⑦ EX HOT-MIX ASPHALT SHOULDERS
- ⑧ EX PIPE UNDERDRAIN



**RAMPS  
PCC PAVEMENT**