

INDEX OF SHEETS

- 1 COVER
- 2 NOTES, QUANTITIES
- 3 TYPICAL SECTION, DETAILS
- 4-6 PLAN & PROFILE SHEETS
- 7-13 CROSS SECTION SHEETS
- 14 SWPPP

HIGHWAY STANDARDS

- 000001-06 STANDARD SYMBOLS, ABBREVIATIONS, AND PATTERNS
- 001006 DECIMAL OF AN INCH AND OF A FOOT
- 280001-07 TEMPORARY EROSION CONTROL SYSTEMS
- 701001-02 OFF ROAD OPERATIONS, 2L, 2W, MORE THAN 15' AWAY
- 701006-05 OFF RD OPERATIONS, 2L, 2W, 15' TO 24" FROM PAVEMENT EDGE
- 701301-04 LANE CLOSURE, 2L, 2W, SHORT TIME OPERATIONS

STATE OF ILLINOIS
DEPARTMENT OF TRANSPORTATION

PROPOSED
SAFE ROUTES TO SCHOOL

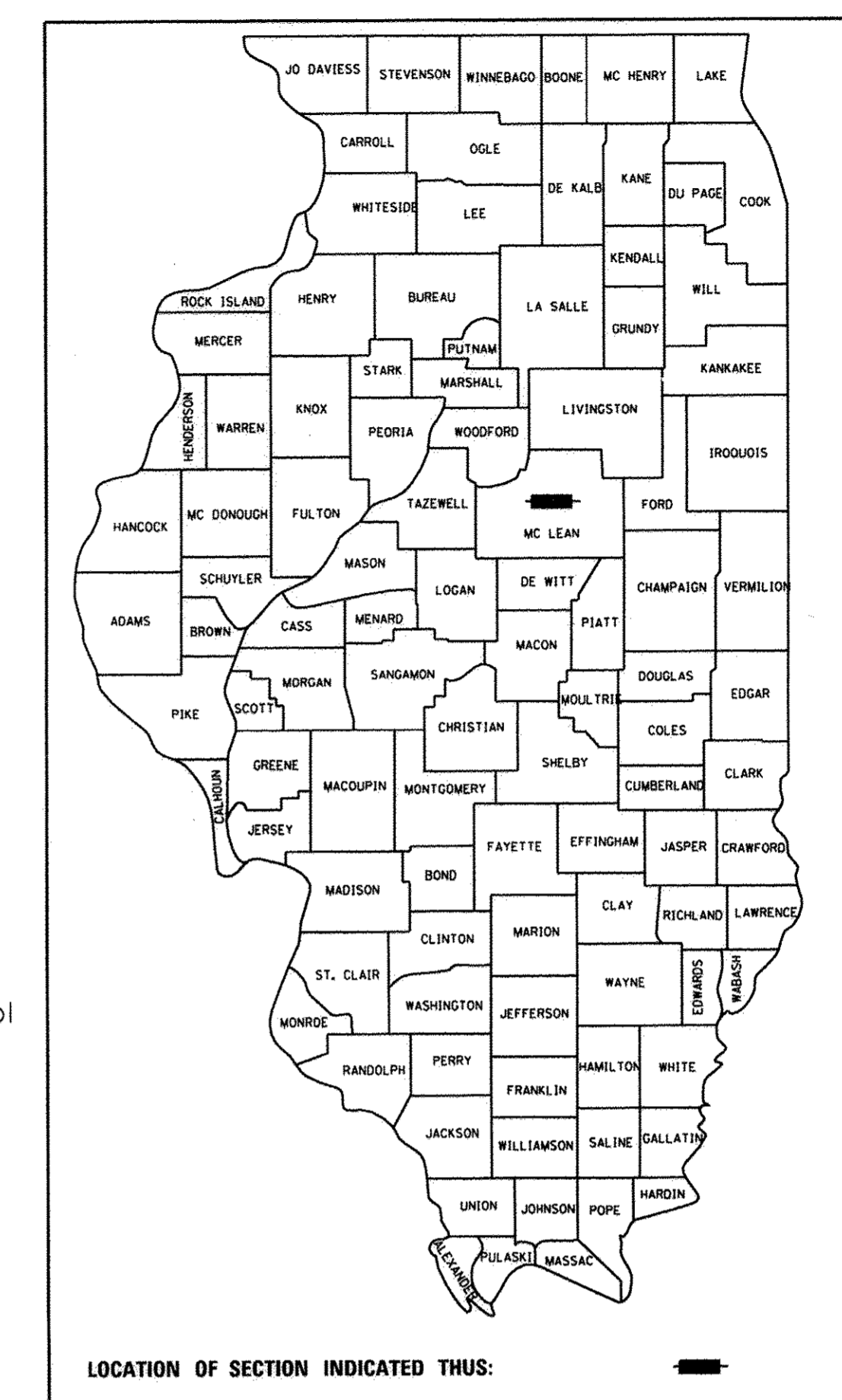
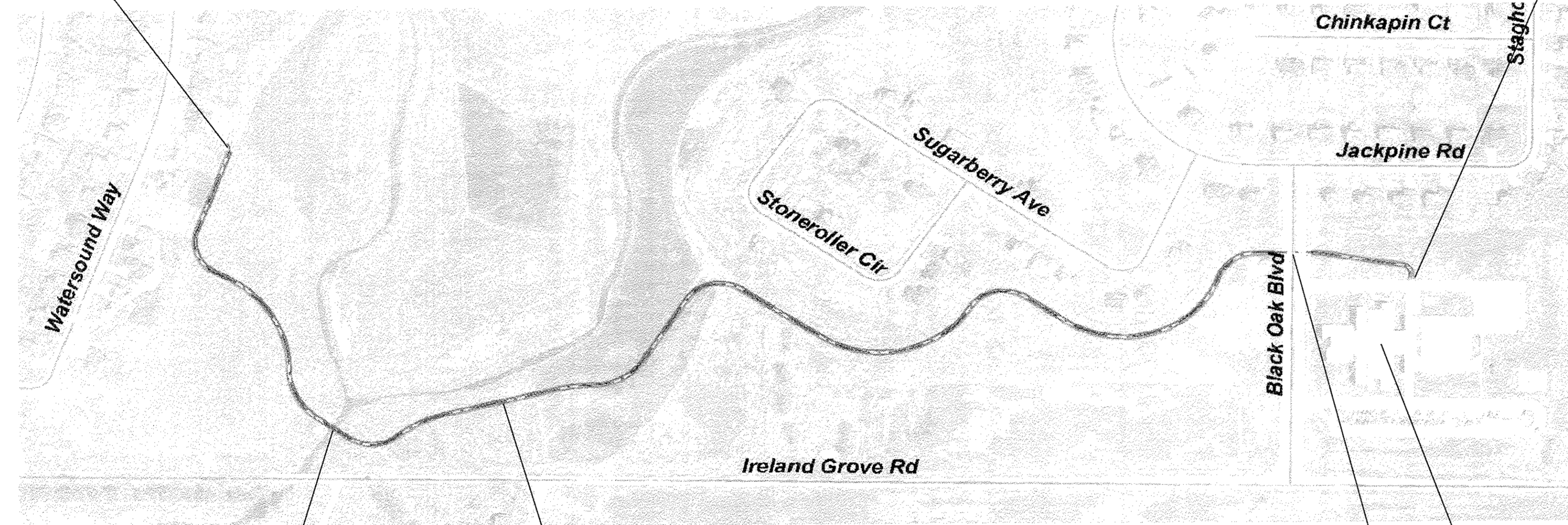
CITY OF BLOOMINGTON
McLEAN COUNTY

SECTION 16-00359-00-BT
PROJECT SRTS-4009(364)
C-95-323-15

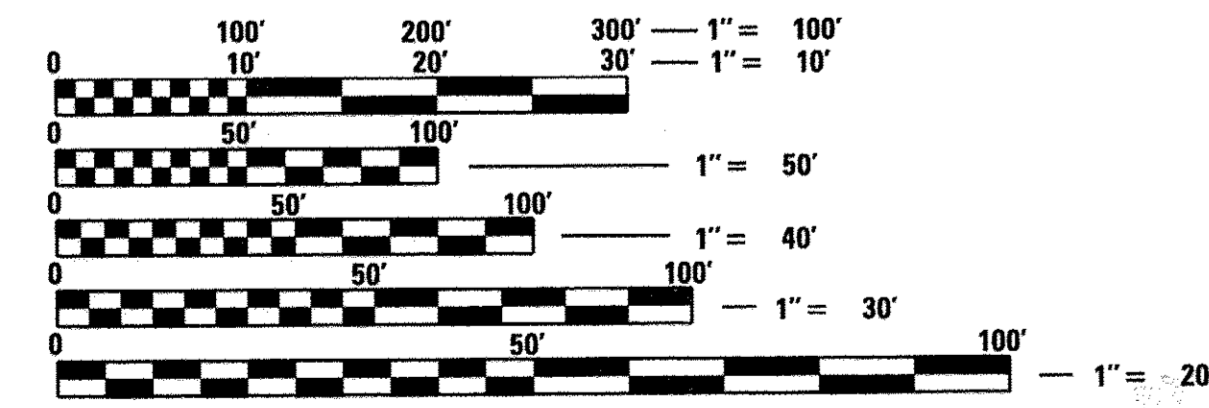
BENJAMIN SCHOOL TRAIL
Grove Subdivision 1st Addition to Benjamin Elementary School

BEGIN PROJECT
STA 10+00
Grove Sub. 1st Add.

END PROJECT
STA 51+52
Benjamin Elem. School



LOCATION OF SECTION INDICATED THUS: [Symbol]



FULL SIZE PLANS HAVE BEEN PREPARED USING STANDARD ENGINEERING SCALES. REDUCED SIZED PLANS WILL NOT CONFORM TO STANDARD SCALES. IN MAKING MEASUREMENTS ON REDUCED PLANS, THE ABOVE SCALES MAY BE USED.

J.U.L.I.E.
JOINT UTILITY LOCATION INFORMATION FOR EXCAVATION
1-800-892-0123 OR 811

PROJECT ENGINEER GREG KALLEVIG
PROJECT MANAGER GREG KALLEVIG

CONTRACT NO. 91533

LOCATION MAP
NOT TO SCALE

10' ASPHALT TRAIL
w/ 2' GRADED TURF SHOULDERS

GROSS LENGTH OF IMPROVEMENT = 4,152 ft = 0.7864 mi
OMMISSION STA 47+70 to 48+65 = 95 ft = 0.0180 mi
NET LENGTH OF IMPROVEMENT = 4057 ft = 0.7684 mi

OMMISSION
STA 47+65 to 48+60
Black Oak Blvd. existing underpass



Gregory S. Kallevig 10/17/2016
ILLINOIS PROFESSIONAL ENGINEER
NO. 062-051367
EXPIRATION 11/30/2017

CITY OF BLOOMINGTON	
APPROVED <i>Kevin Kothe</i> 10/17/2016 Kevin Kothe, P.E. CITY ENGINEER	DATE
APPROVED <i>Jay Tetloff</i> 17 Oct 16 Jay Tetloff PARKS & RECREATION DIRECTOR	DATE
PASSED <i>October 25, 2016</i> <i>B. K. [Signature]</i> DISTRICT 5 ENGINEER LOCAL ROADS & STREETS	
RELEASING FOR BID BASED ON LIMITED REVIEW <i>October 25, 2016</i> <i>[Signature]</i> REGION 3 ENGINEER	

PRINTED BY THE AUTHORITY
OF THE STATE OF ILLINOIS

SCALE NONE

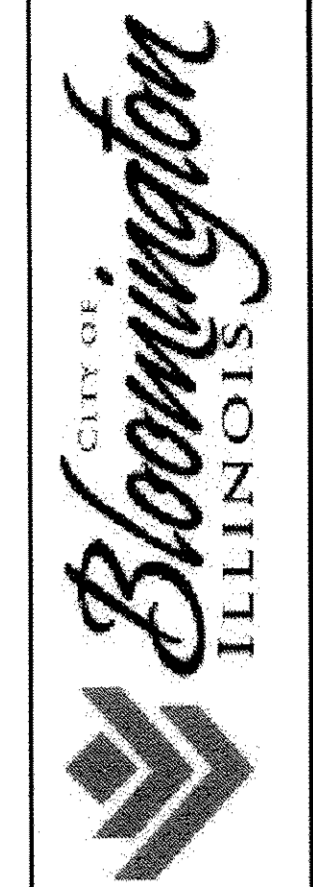
SECTION 16-00359-00-BT

REVISED # - / - / -

DESIGN BY: CSK
COVER SHEET

BENJAMIN SCHOOL TRAIL

SHEET
1 OF 14



GENERAL NOTES

- ALL WORK SHALL BE IN ACCORDANCE WITH THE "STANDARD SPECIFICATIONS FOR ROAD AND BRIDGE CONSTRUCTION," ADOPTED APRIL 1, 2016 BY THE ILLINOIS DEPARTMENT OF TRANSPORTATION, THE "SUPPLEMENTAL SPECIFICATIONS AND RECURRING SPECIAL PROVISIONS," ADOPTED APRIL 1, 2016 (IDOT), THE "STANDARD SPECIFICATIONS FOR WATER AND SEWER MAIN CONSTRUCTION IN ILLINOIS," LATEST EDITION AND THE MCLEAN COUNTY HIGHWAY CONSTRUCTION STANDARDS.
 - THE EXISTING CONTOUR AND TOPOGRAPHIC INFORMATION IS BASED UPON STATE LIDAR DATA FLOWN 2014.
 - THE OWNER WILL PROVIDE GUIDANCE FOR HORIZONTAL ALIGNMENT, THE CONTRACTOR WILL BE RESPONSIBLE FOR LONGITUDINAL SLOPE AND CROSS SLOPE GRADE CONTROL LAYOUT THAT DOES NOT EXCEED 5% AND 2% RESPECTIVELY.
 - ALL STATIONING ON THE PLANS IS REFERENCED TO THE CENTERLINE OF THE PROPOSED TRAIL.
 - THE CONTRACTOR SHALL BE RESPONSIBLE FOR PROTECTING ALL UNDERGROUND UTILITIES DURING CONSTRUCTION ACTIVITIES. THE CONTRACTOR SHALL BE RESPONSIBLE FOR KEEPING EXISTING UTILITIES IN SERVICE AND PROMPTLY REPAIRING ANY WHICH ARE DAMAGED DURING CONSTRUCTION.
- THE CONTRACTOR SHALL USE EXTREME CARE IN THIS CONSTRUCTION TO PROTECT THE PUBLIC'S PROPERTY, HEALTH AND SAFETY. ANY DAMAGE TO PROPERTY, FENCES, LANDSCAPING, ROADS, EXISTING UTILITIES, STORM SEWERS, DRAINAGE WAYS, ETC. AS A RESULT OF THIS CONSTRUCTION SHALL BE REPAIRED TO THE SATISFACTION OF THE OWNER OF SAME AT THE CONTRACTOR'S EXPENSE.
- THE CONTRACTOR SHALL BE RESPONSIBLE FOR MAINTAINING EXISTING FIELD ENTRANCES.
 - THE CONTRACTOR SHALL KEEP THE SITE FREE FROM ACCUMULATIONS OF WASTE MATERIALS, RUBBISH AND OTHER DEBRIS RESULTING FROM THE WORK. CONSTRUCTION RUBBLE AND DEBRIS GENERATED BY CONSTRUCTION ACTIVITIES SHALL BE REMOVED FROM THE SITE BY THE CONTRACTOR AND DISPOSED IN A LEGAL MANNER AT THE CONTRACTOR'S EXPENSE.
- ALL EXCESS EXCAVATED MATERIAL NOT REQUIRED OR NOT SUITABLE FOR EMBANKMENT MATERIAL OR TOPSOIL MAY BE WASTED (SPREAD) ON SITE BY THE CONTRACTOR IN A MANNER AND LOCATION APPROVED BY THE OWNER. NO EXCESS MATERIAL MAY BE WASTED IN THE STREAM RESTORATION AREA. MATERIAL SUITABLE FOR TOPSOIL SHALL BE STOCKPILED ON SITE AT THE DIRECTION OF THE OWNER.
- ALL EARTHEN AREAS DISTURBED BY THE CONTRACTOR'S OPERATIONS SHALL RECEIVE A MINIMUM OF (4) FOUR INCHES OF TOPSOIL. THIS ITEM SHALL INCLUDE TOPSOIL EXCAVATION AND PLACEMENT AND PLACED TO THE PROPOSED LINES AND GRADES SHOWN ON THE PLANS. TOPSOIL PLACEMENT SHALL NOT BE PAID FOR SEPARATELY.
 - THE CONTRACTOR SHALL BE RESPONSIBLE FOR MAINTAINING DRAINAGE THROUGHOUT THE CONSTRUCTION OF THIS PROJECT. COSTS ASSOCIATED WITH THIS TASK SHALL BE INCIDENTAL TO THE CONTRACT.
 - THE OWNER'S ENGINEER SHALL BE NOTIFIED OF ANY SURVEY MONUMENTS ENCOUNTERED DURING CONSTRUCTION. THE CONTRACTOR SHALL PROTECT ALL MONUMENTS UNTIL AN AUTHORIZED SURVEYOR HAS WITNESSED OR OTHERWISE REFERENCED THE MONUMENT.
 - PRIOR TO SUBMITTING A PROPOSAL FOR THIS CONTRACT, THE CONTRACTOR SHALL VISIT THE SITE AND FAMILIARIZE HIMSELF WITH THE PROJECT REQUIREMENTS. NO CLAIMS FOR EXTRAS WILL BE ALLOWED FOR REASONS OF UNFAMILIARITY WITH THE SITE OR THESE CONTRACT DOCUMENTS.

EROSION CONTROL NOTES

- EROSION CONTROL PRACTICES SHALL BE IN ACCORDANCE WITH SECTION 280 OF THE STANDARD SPECIFICATIONS.
- THE CONTRACTOR SHALL INSTALL EROSION CONTROL AT THE ONSET OF CONSTRUCTION AND MAINTAIN UNTIL VEGETATIVE STABILIZATION OF DISTURBED AREAS HAS BEEN ACHIEVED.
- ALL DISTURBED EARTHEN AREAS AND TOPSOIL AREAS SHALL BE SEEDED AND MULCHED (METHOD 2) ACCORDING TO SECTIONS 250 AND 251 OF THE STANDARD SPECIFICATIONS. SEEDING AND MULCHING SHALL BE PAID PER THE UNIT PAY ITEMS PROVIDED AND AS SHOWN ON THE PLANS AND DEFINED IN THE SPECIAL PROVISIONS. SEEDING WILL NOT BE PERMITTED AT ANY TIME WHEN THE GROUND IS FROZEN, WET OR IN AN UNTILLABLE CONDITION. SEED BED PREPARATION SHALL BE INCIDENTAL.
- ALL FERTILIZER NUTRIENTS (NITROGEN, PHOSPHORUS AND POTASSIUM) SHALL BE APPLIED AT A RATE OF 90 POUNDS EACH PER ACRE OF SEEDING AREAS.
- EROSION CONTROL OTHER THAN THAT SHOWN ON THE PLANS, WHICH MAY BE REQUIRED TO PREVENT THE EROSION OR WASHING OF DIRT ONTO ADJACENT LANDS, PUBLIC ROADS OR INTO GRASS WATERWAYS OR DITCHES SHALL BE INCIDENTAL TO THE CONTRACT.
- THE CONTRACTOR SHALL PLACE EROSION CONTROL AROUND EXISTING STORM DRAINAGE STRUCTURES WHEN EXISTING STRUCTURES ARE LOCATED DOWNSTREAM OF STORM WATER RUNOFF TO PREVENT SILT AND DEBRIS FROM ENTERING STRUCTURES.
- CULVERT INLET PROTECTION SHALL INCLUDE THE TEMPORARY PLACEMENT OF EROSION CONTROL IN ORDER TO PREVENT SILT FROM ENTERING PROPOSED CULVERTS UNTIL VEGETATIVE STABILIZATION OF UPSTREAM AREAS HAS BEEN ACHIEVED.

MIXTURE REQUIREMENTS

Location	Bike Trail
Mixture Use	Surface
AC/PG	PG 64-22
Design Air Voids	4.0% @ Ndes=30
Mix Comp (Gradation)	IL 9.5L
Friction Aggregate	Mix C
Mixture Weight	112
Quality Management Program	QC/OA
Sublot Size	N.A.

EARTHWORK TOTAL (CY)

Total Cut	1340
Total Fill	240

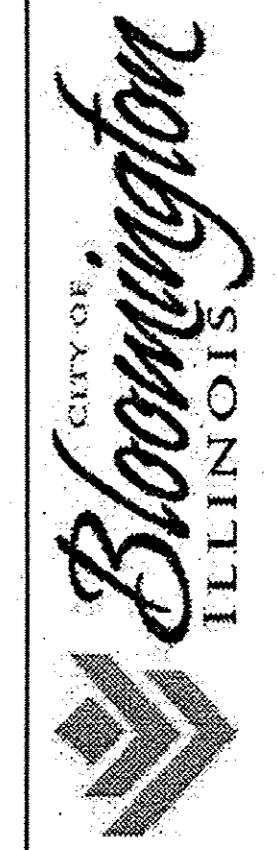
SUMMARY OF QUANTITIES

ITEM	UNIT	SRTS	100% Unit 5 District School	Total
		QTY	QTY	QTY
20200100	EARTH EXCAVATION	CU YD	1,240	1,340
20201200	REMOVAL AND DISPOSAL OF UNSUITABLE MATERIAL	CU YD	37	40
21001000	GEOTECHNICAL FABRIC FOR GROUND STABILIZATION	SQ YD	121	130
25000100	SEEDING, CLASS 1	ACRE	1.05	1.25
25000400	NITROGEN FERTILIZER NUTRIENT	POUND	205	225
25000500	PHOSPHOROUS FERTILIZER NUTRIENT	POUND	205	225
25000600	POTASSIUM FERTILIZER NUTRIENT	POUND	205	225
25000110	SEEDING, CLASS 1A	ACRE	0.50	0.50
25000310	SEEDING, CLASS 4	ACRE	0.25	0.25
25000320	SEEDING, CLASS 5	ACRE	0.25	0.25
25000330	SEEDING, CLASS 6	ACRE	0.25	0.25
25000350	SEEDING, CLASS 7	ACRE	1.25	1.25
25100115	MULCH, METHOD 2	ACRE	2.30	2.50
28000250	TEMPORARY EROSION CONTROL SEEDING	POUND	185	200
28000400	PERIMETER EROSION BARRIER	FOOT	3,900	4,200
28000500	INLET AND PIPE PROTECTION	EACH	2	2
31101000	SUB-BASE GRANULAR MATERIAL, TYPE B	TON	37	40
35101800	AGGREGATE BASE COURSE, TYPE B, 6"	SQ YD	5,110	5,516
40600275	BITUMINOUS MATERIALS (PRIME COAT)	POUND	11,600	12,500
40603305	HOT-MIX ASPHALT SURFACE COURSE, MIX "C", N30	TON	475	515
67100100	MOBILIZATION	L. SUM	0.93	1
X2300006	BICYCLE RAILING (PARAPET MOUNTED)	FOOT	120	120
Z0013797	STABILIZED CONSTRUCTION ENTRANCE	SQ YD	360	360
Z0013798	CONSTRUCTION LAYOUT	L. SUM	0.93	1
Z0077740	WOOD GUARDRAIL	FOOT	50	50

△ SPECIALTY ITEMS

SCHEDULE OF QUANTITIES

EARTH EXCAVATION Station to Station	CY	PERIMETER EROSION BARRIER Station to Station	FOOT
10+00 47+65	1240	10+00 47+65 As Directed by Engineer	3900
48+60 51+52	100	48+60 51+52 As Directed by Engineer	300
TOTAL	1340	TOTAL	4200
REMOVAL AND DISPOSAL OF UNSUITABLE MATERIAL Station to Station	CY	INLET AND PIPE PROTECTION Station to Station	EACH
Various as Directed by Engineer	40	Various as Directed by Engineer	2
GEOTECHNICAL FABRIC FOR GROUND STABILIZATION Station to Station	SY	SUB-BASE GRANULAR MATERIAL, TYPE B Station to Station	TON
Various as Directed by Engineer	130	Various as Directed by Engineer	40
SEEDING, CLASS 1 Station to Station	ACRE	AGGREGATE BASE COURSE, TYPE B, 6" Station to Station	SY
10+00 13+25	0.10	10+00 47+65	5116
31+00 47+65	0.95	48+60 51+52	400
48+60 51+52	0.20	TOTAL	5516
TOTAL	1.25	BITUMINOUS MATERIALS (PRIME COAT) Station to Station	POUND
NITROGEN FERTILIZER NUTRIENT Station to Station	POUND	10+00 47+65	11600
10+00 47+65	205	48+60 51+52	900
48+60 51+52	20	TOTAL	12500
TOTAL	205	HOT-MIX ASPHALT SURFACE COURSE, MIX "C", N30 Station to Station	TON
SEEDING, CLASS 1A Station to Station	ACRE	10+00 47+65	475
SEEDING, CLASS 4	0.5	48+60 51+52	40
SEEDING, CLASS 5	0.25	TOTAL	515
SEEDING, CLASS 6	0.25	BICYCLE RAILING (PARAPET MOUNTED) Station to Station	FOOT
SEEDING, CLASS 7	1.25	19+30L 19+90L	60
Stream Restoration Area As Directed by Engineer		19+30R 19+90R	60
MULCH, METHOD 2 Station to Station	ACRE	TOTAL	120
10+00 47+65	2.3	STABILIZED CONSTRUCTION ENTRANCE Station to Station	SY
48+60 51+52	0.20	Various as Directed by Engineer	360
TOTAL	2.5	WOOD GUARDRAIL Station to Station	FOOT
TEMPORARY EROSION CONTROL SEEDING Station to Station	POUND	19+06L 19+30L	12
10+00 47+65	185	19+06R 19+30R	12
48+60 51+52	15	19+90L 20+14L	12
TOTAL	200	19+90R 20+14R	12
		TOTAL	48



SCALE NONE

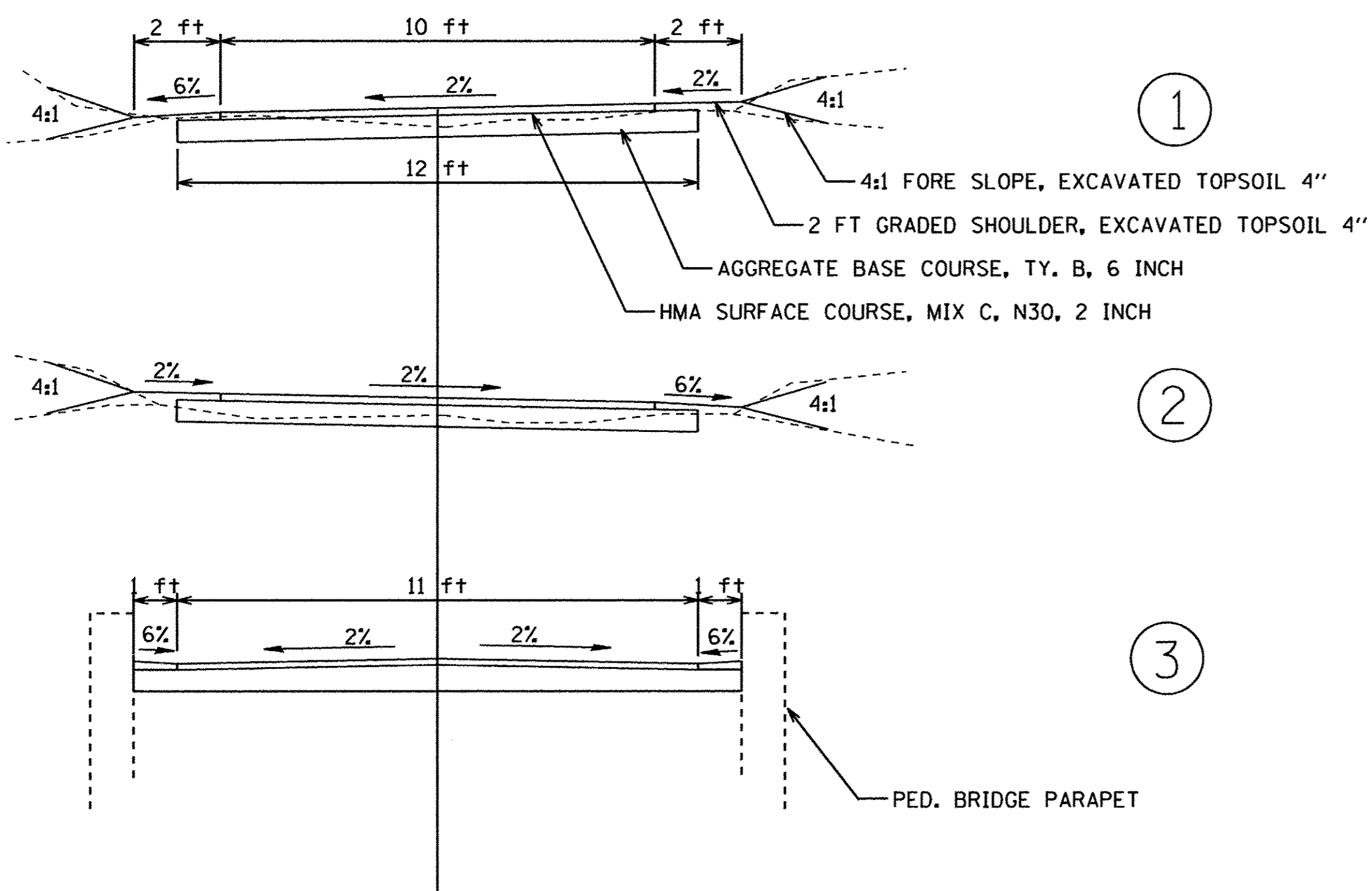
SECTION 16-00359-00-BT

DESIGN BY : GSK
REVISED : - - - / - - - / - - -
NOTES and SUMMARY OF QUANTITIES

BENJAMIN SCHOOL TRAIL

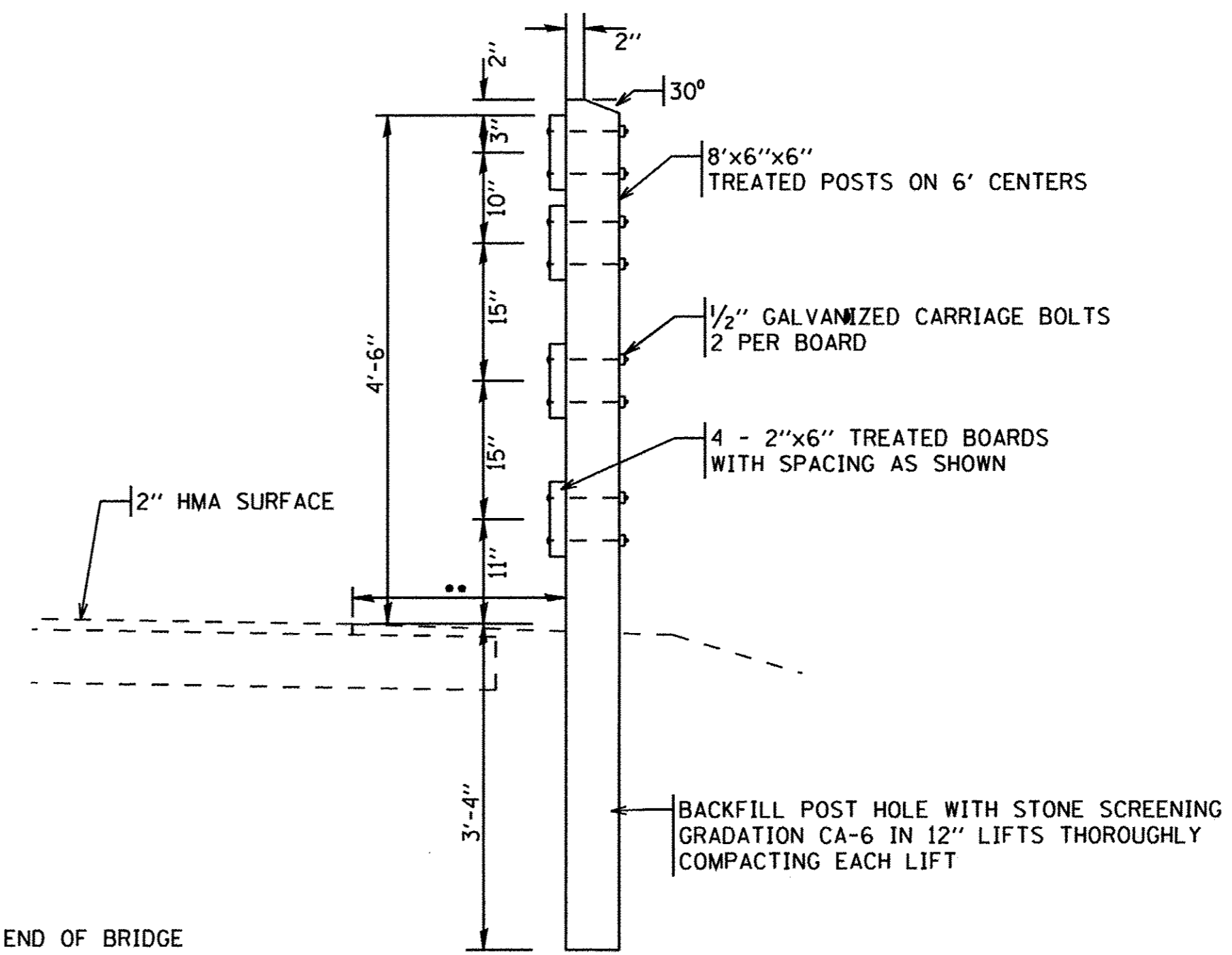
SHEET
2 OF 14

TYPICAL SECTIONS

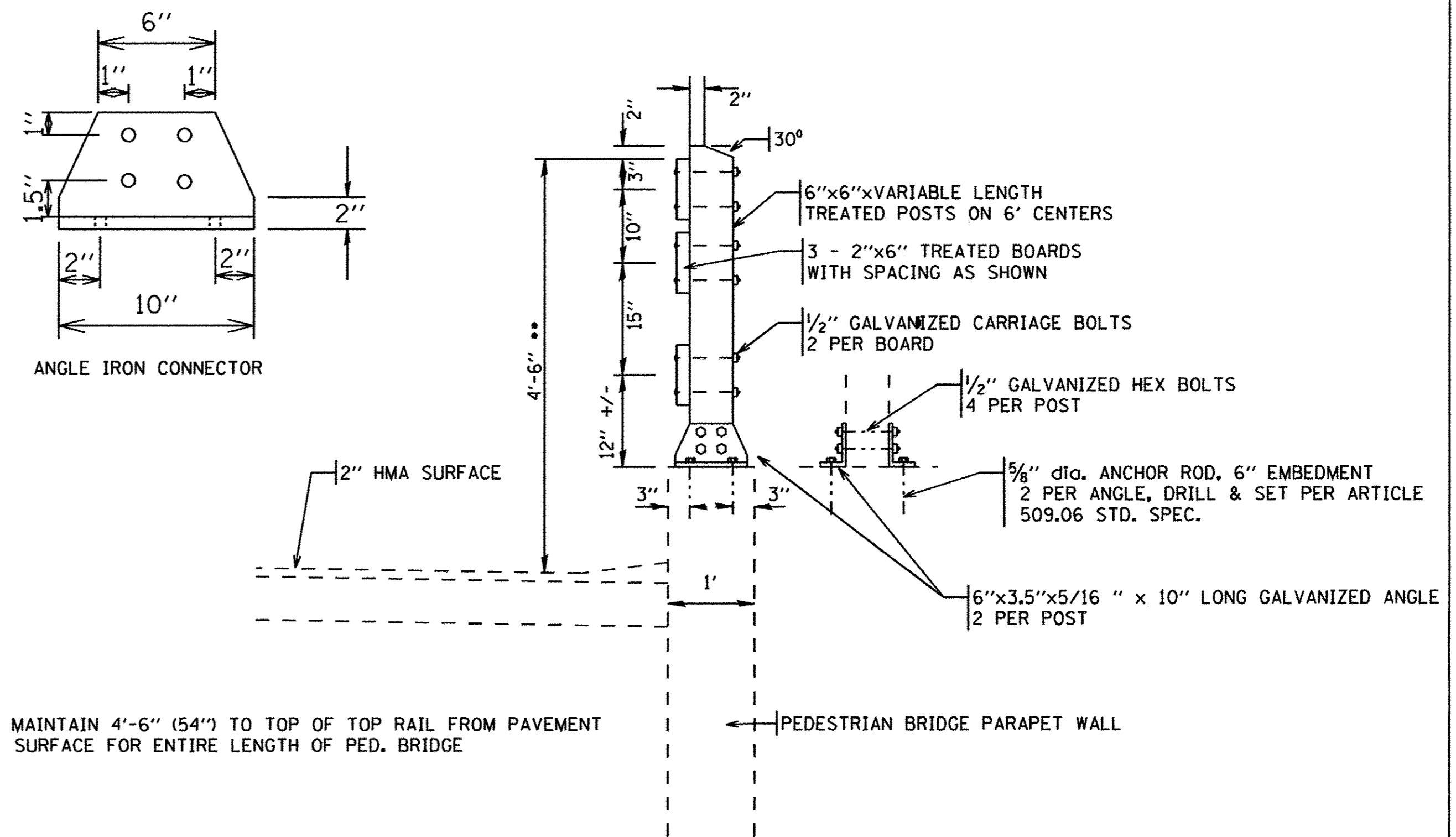


TYPICAL SECTION LOCATIONS

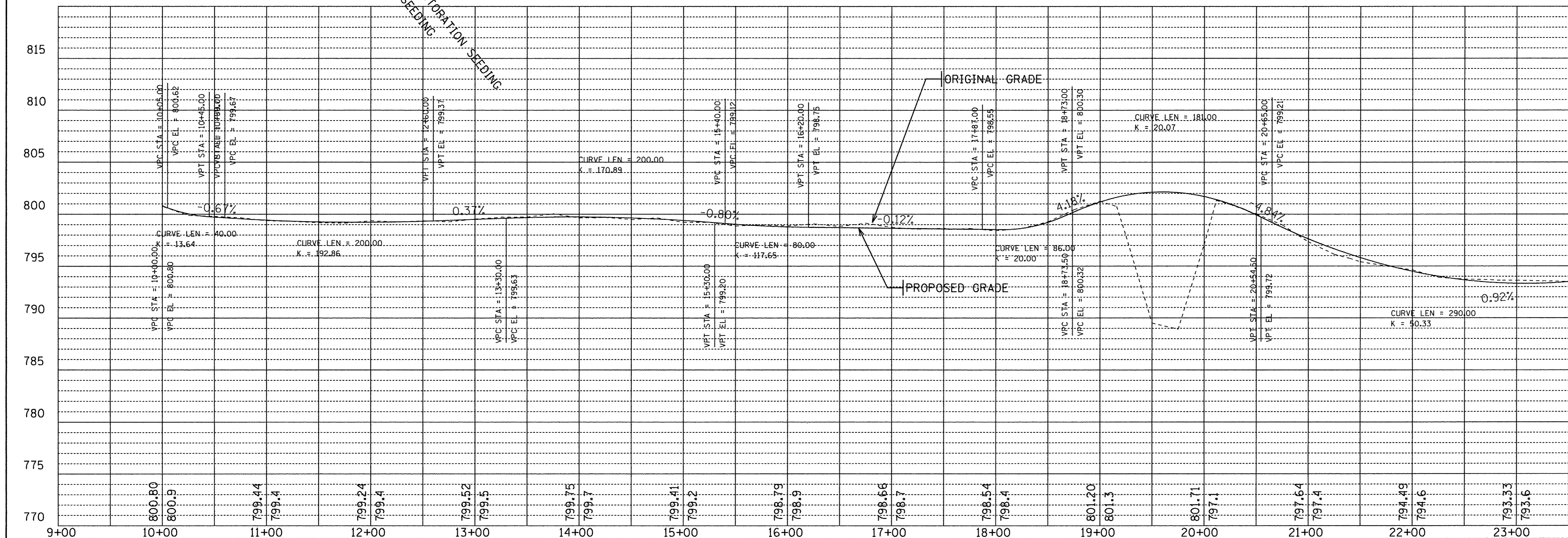
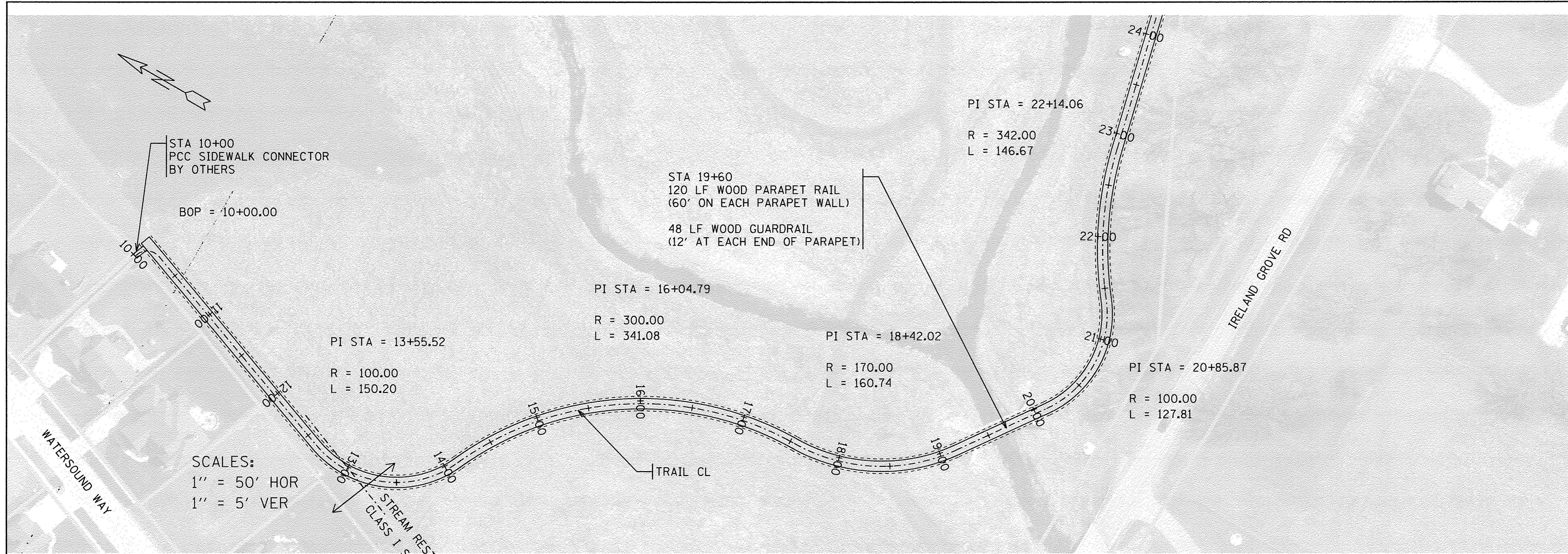
FROM STATION	TO STATION	TYPICAL SECTION
		SIDEWALK AT GROVE SUB
10+00	19+20	1
19+20	19+25	1 TRANSITION 3
19+25	20+00	3 (PED. BRIDGE)
20+00	20+05	3 TRANSITION 1
20+05	34+50	1
34+50	34+75	1 TRANSITION 2
34+75	46+75	2
46+75	47+00	2 TRANSITION 1
47+00	47+55	1
47+55	48+75	UNDERPASS (NO PAV'T)
48+75	51+88	1
		BENJAMIN SCHOOL



WOOD GUARD RAIL



WOOD PARAPET RAIL FOR PEDESTRIAN BRIDGE
Top Mount

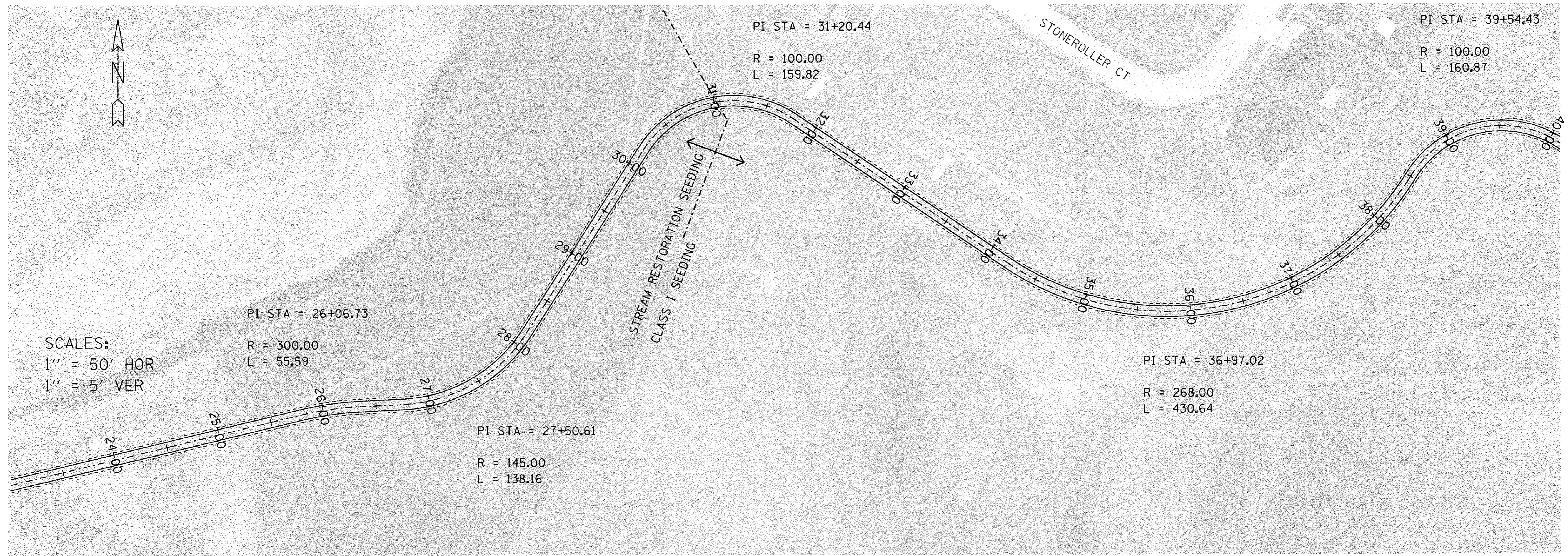


DESIGN BY : GSK
 REVISED :
 APPROVED BY :
 DATE :

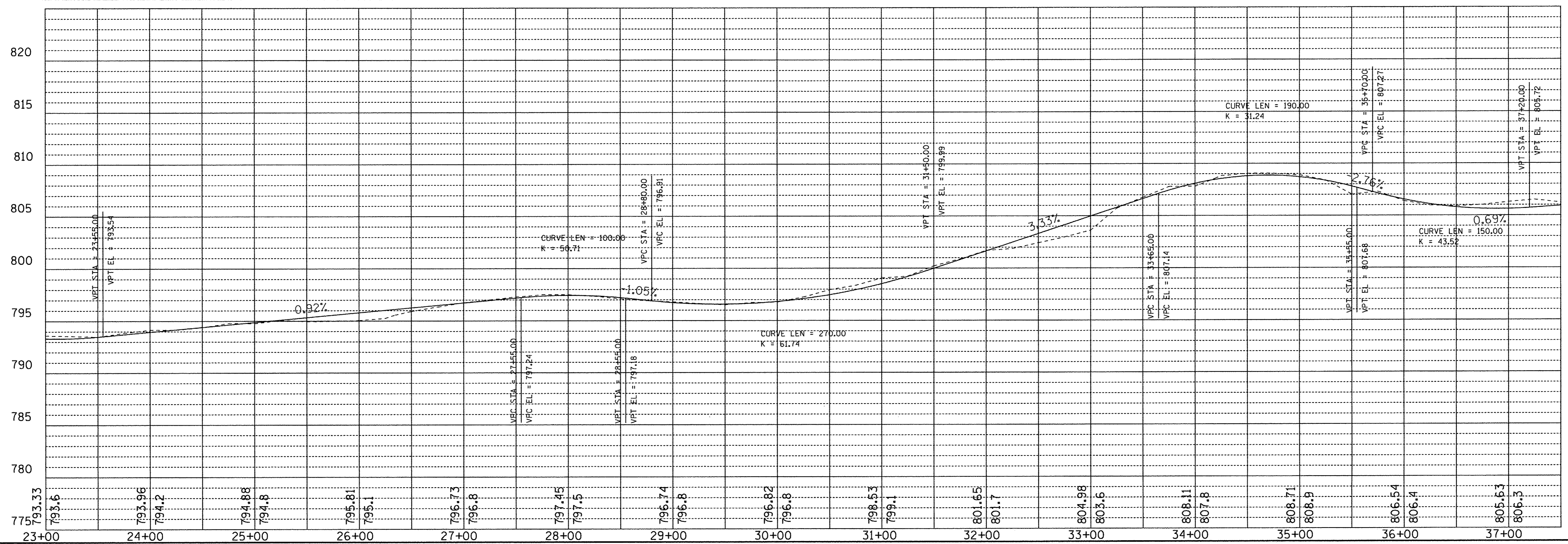
SCALE 1" = 5' V
 SCALE 1" = 50' H

PLAN & PROFILE STATION 10+00 TO 23+50
 BENJAMIN SCHOOL TRAIL - SAFE ROUTES TO SCHOOL SECTION 16-00359-00-BT

SHEET
 4 OF 14



SCALES:
 1" = 50' HOR
 1" = 5' VER

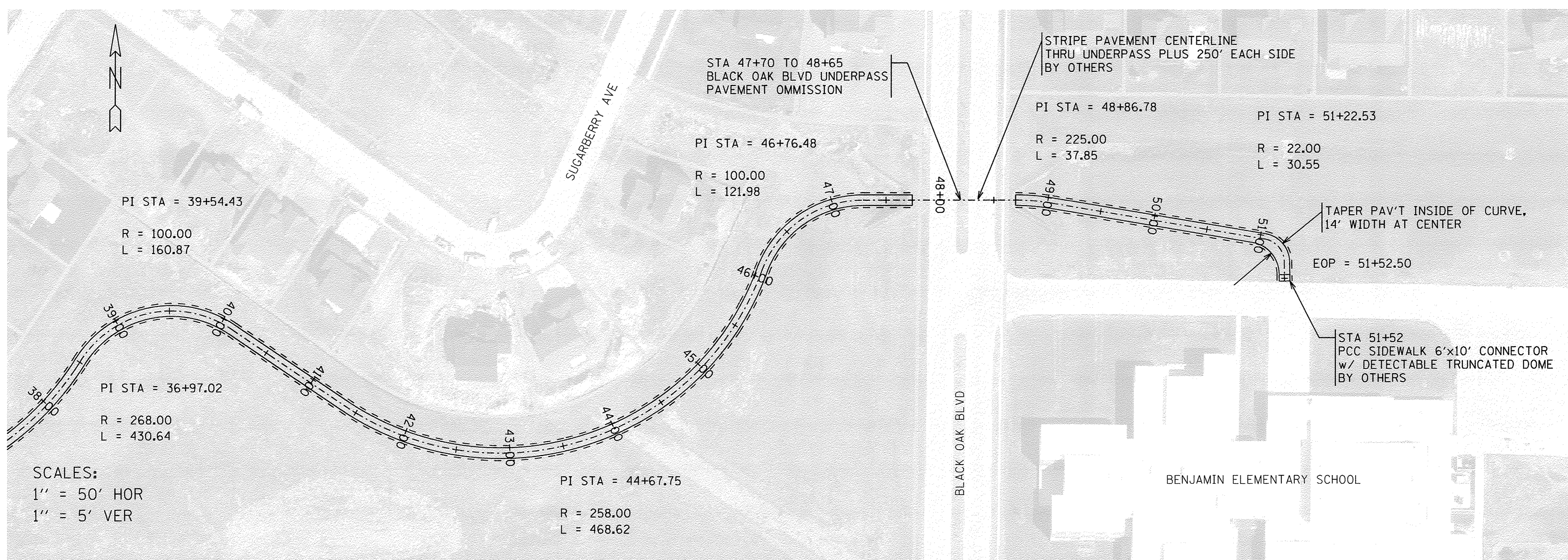


SCALE 1" = 5' V
 SCALE 1" = 50' H

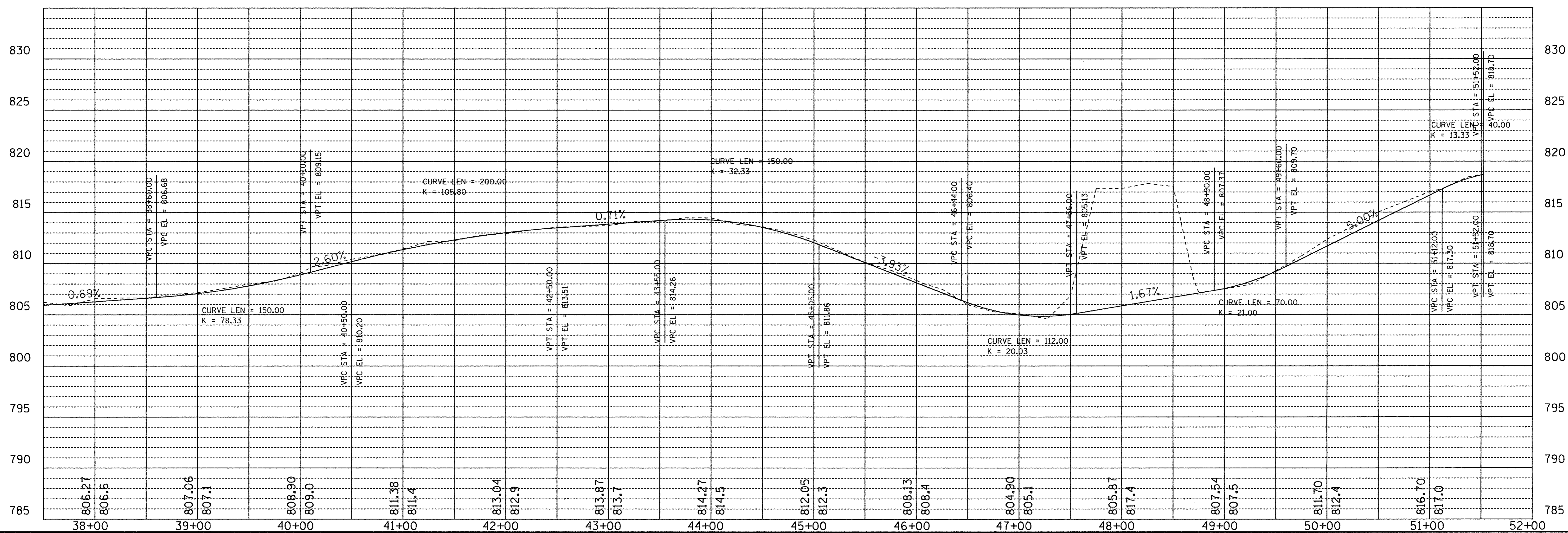
APPROVED BY: _____
 DATE: _____

DESIGN BY: GSK
 REVISIONS:
 PLAN & PROFILE STATION 23+00 TO 37+50
 BENJAMIN SCHOOL TRAIL - SAFE ROUTES TO SCHOOL SECTION 16-00359-00-BT

SHEET
 5 OF 14



SCALES:
 1" = 50' HOR
 1" = 5' VER

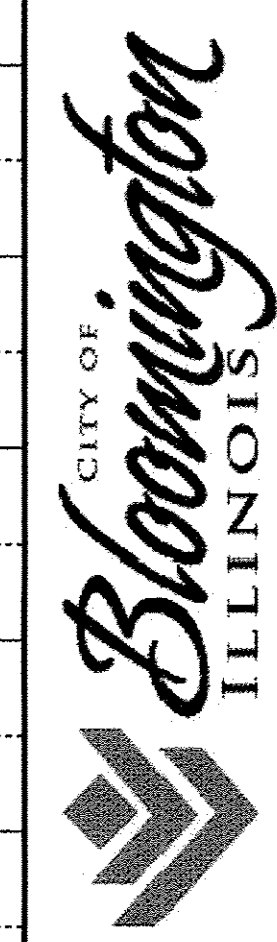
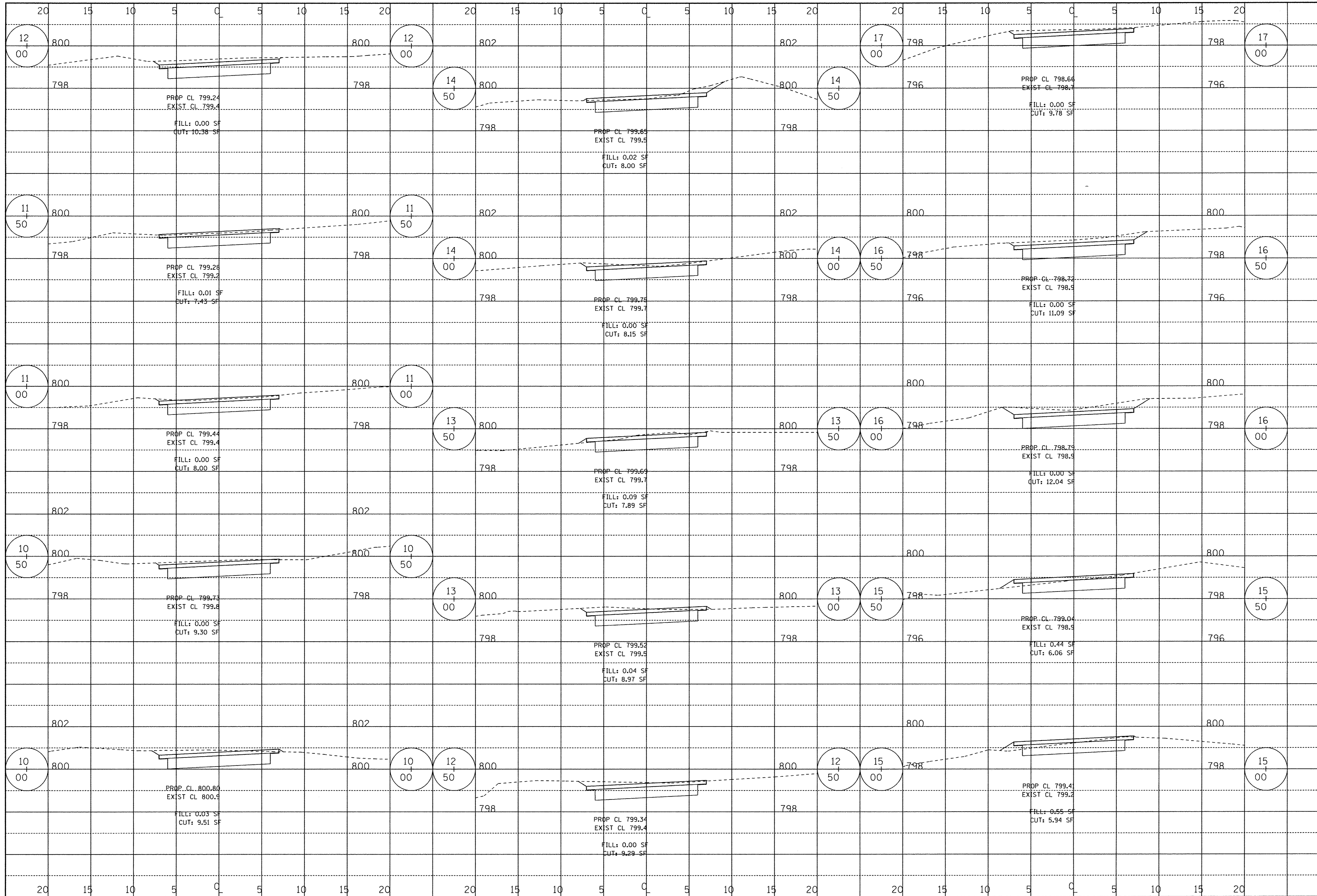


1" = 5' V
 SCALE 1" = 50' H

APPROVED BY :
 DATE :

DESIGN BY : GSK
 REVISED :
 PLAN & PROFILE STATION 37+50 TO 51+52
 BENJAMIN SCHOOL TRAIL - SAFE ROUTES TO SCHOOL SECTION 16-00359-00-BT

SHEET
 6 OF 14



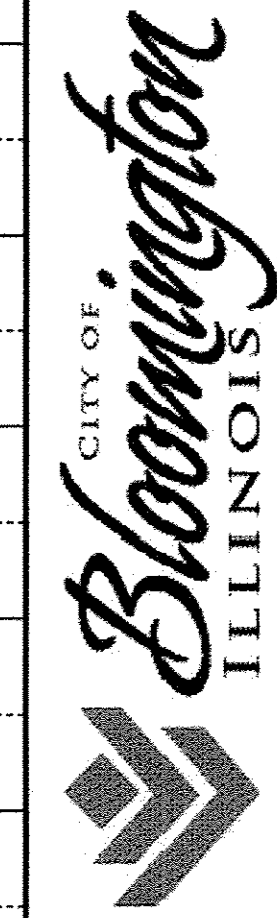
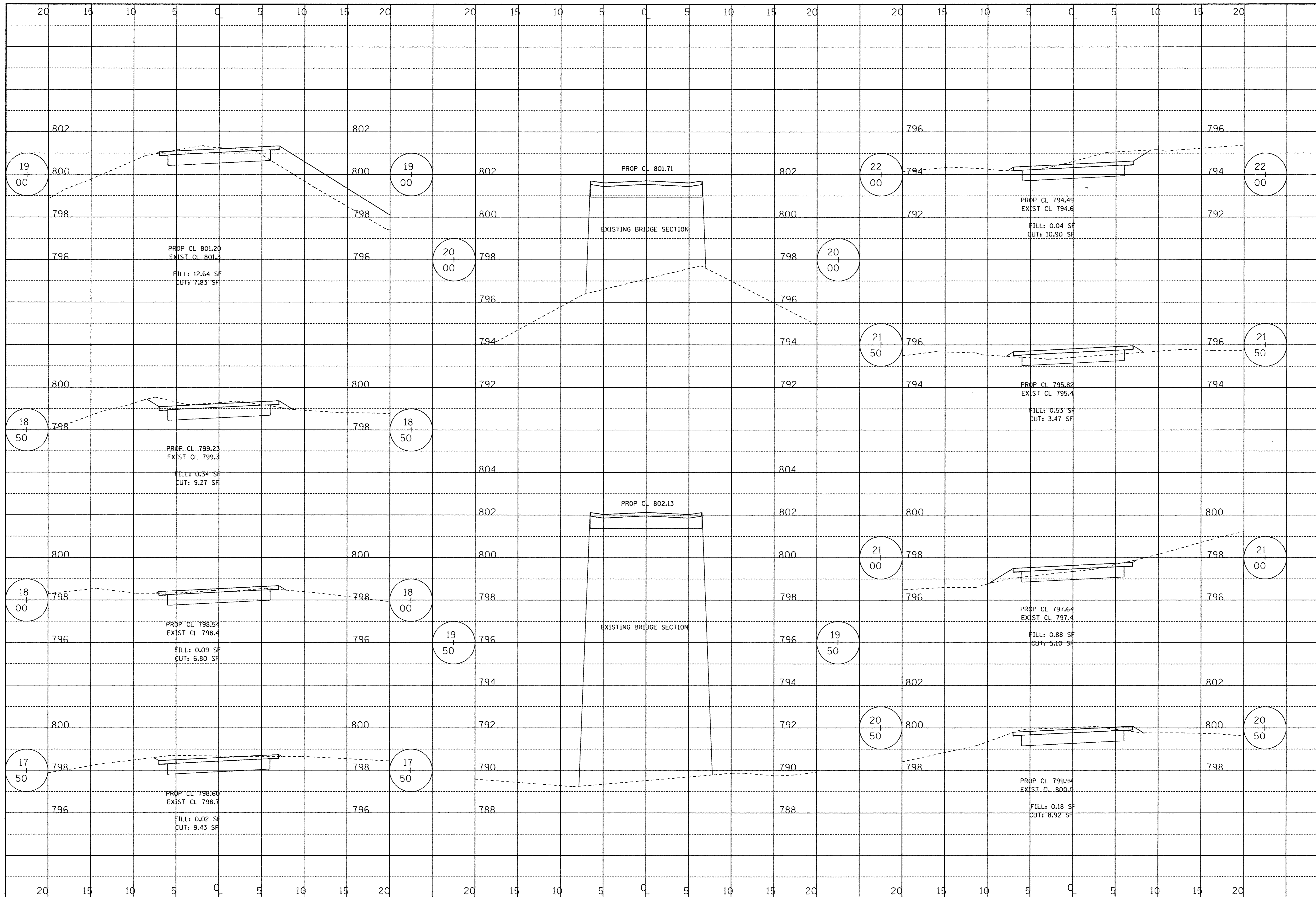
SCALE 1" = 2' V
1" = 5' H

APPROVED BY :
DATE :

DESIGN BY : GSK
REVISED :
CROSS SECTIONS STA 10+00 TO 17+00

SHEET 7 OF 14

BENJAMIN SCHOOL TRAIL - SAFE ROUTES TO SCHOOL SECTION 16-00359-00-BT

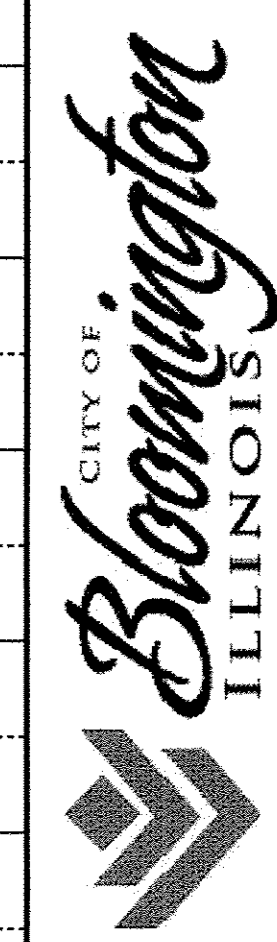
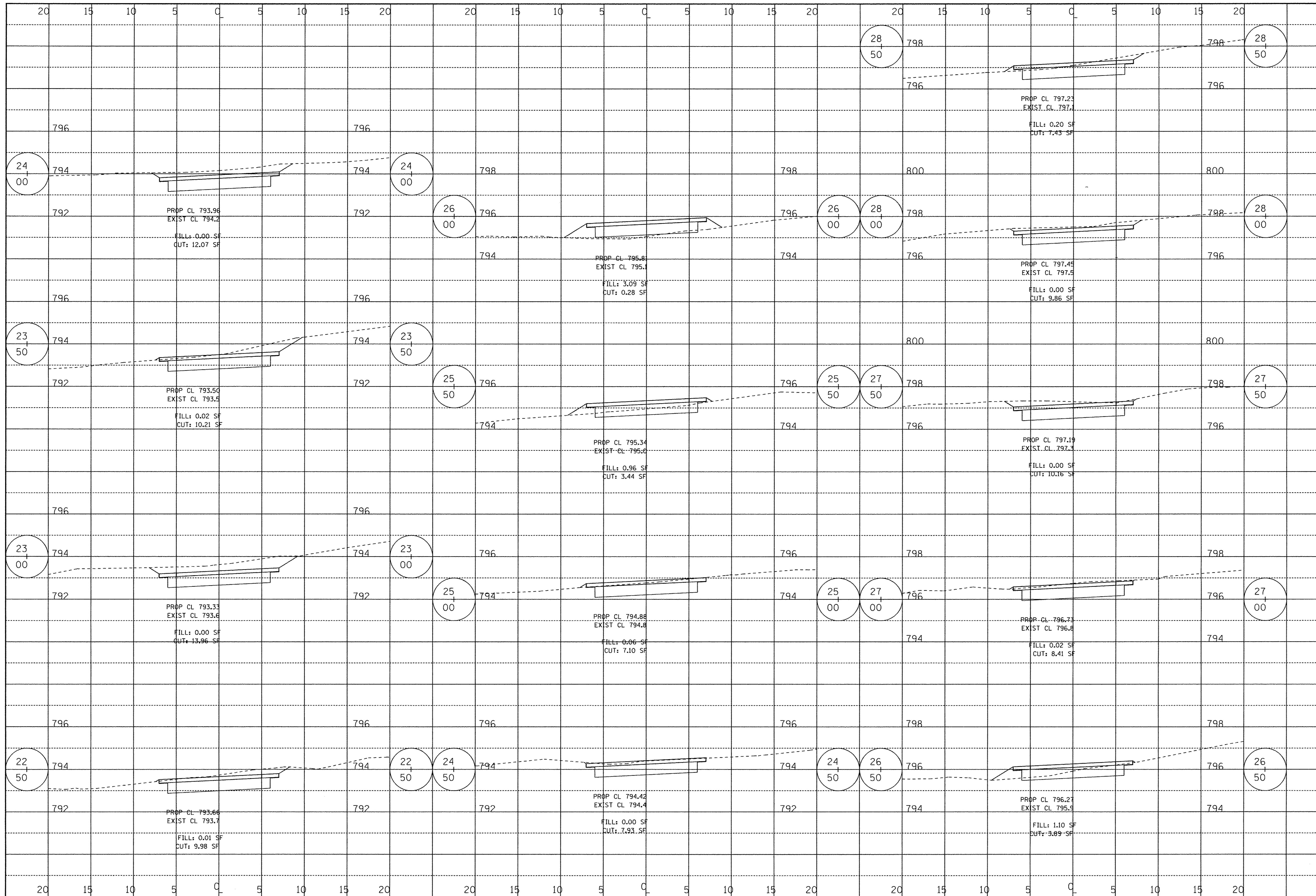


SCALE 1" = 2' V
1" = 5' H

BY :
APPROVED :
DATE :

DESIGN BY : GSK
REVISSED :
CROSS SECTIONS STA 17+50 TO 22+00
BENJAMIN SCHOOL TRAIL - SAFE ROUTES TO SCHOOL SECTION 16-00359-00-BT

SHEET
8 OF 14

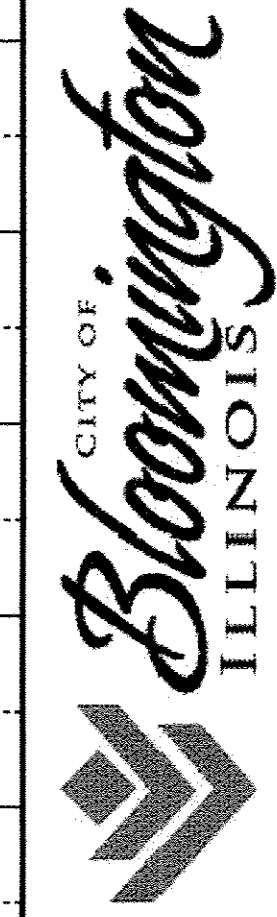
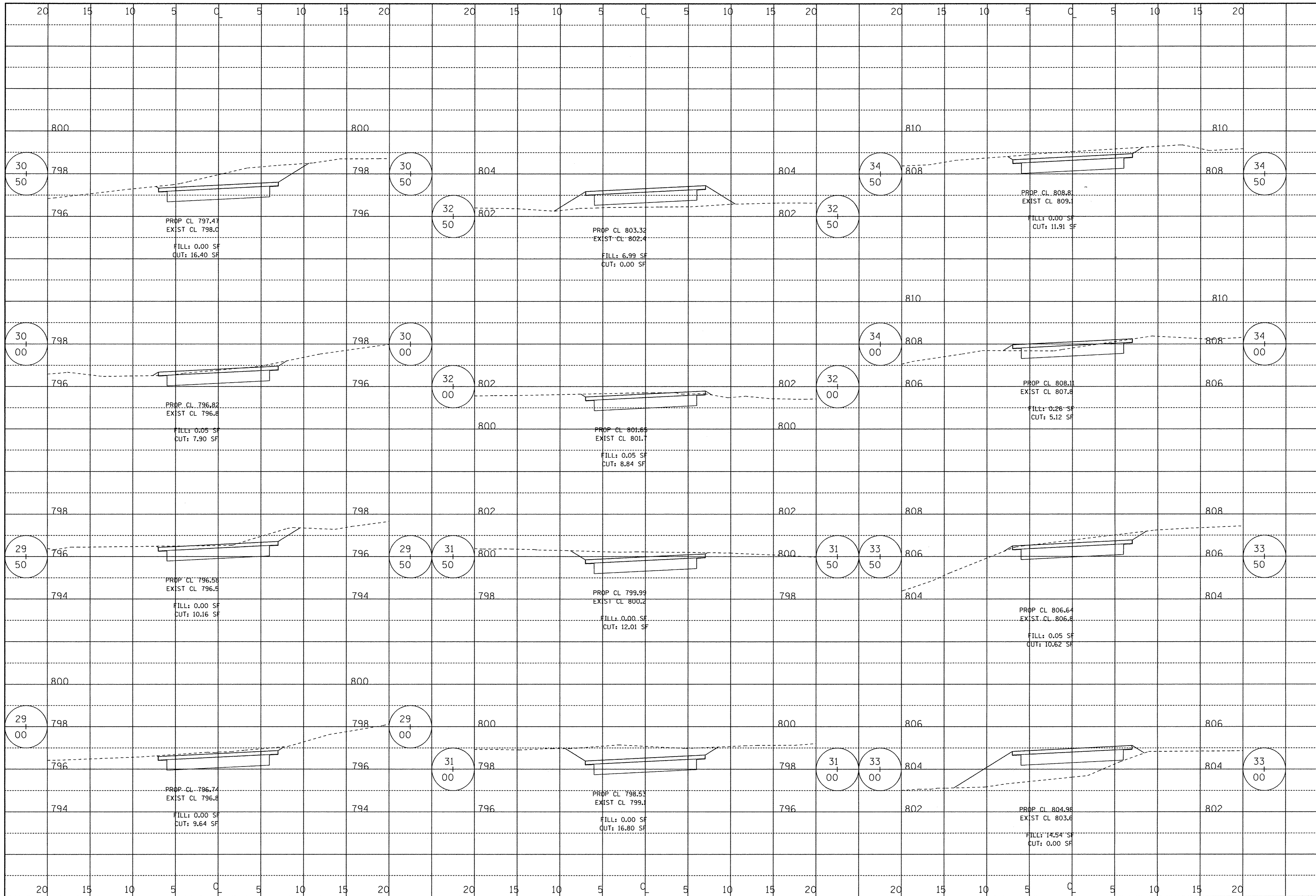


SCALE 1" = 2' V
1" = 5' H

APPROVED BY: _____
DATE: _____

DESIGN BY: GSK
REVISED: _____
CROSS SECTIONS STA 22+00 TO 28+50
BENJAMIN SCHOOL TRAIL - SAFE ROUTES TO SCHOOL SECTION 16-00359-00-BT

SHEET 9 OF 14

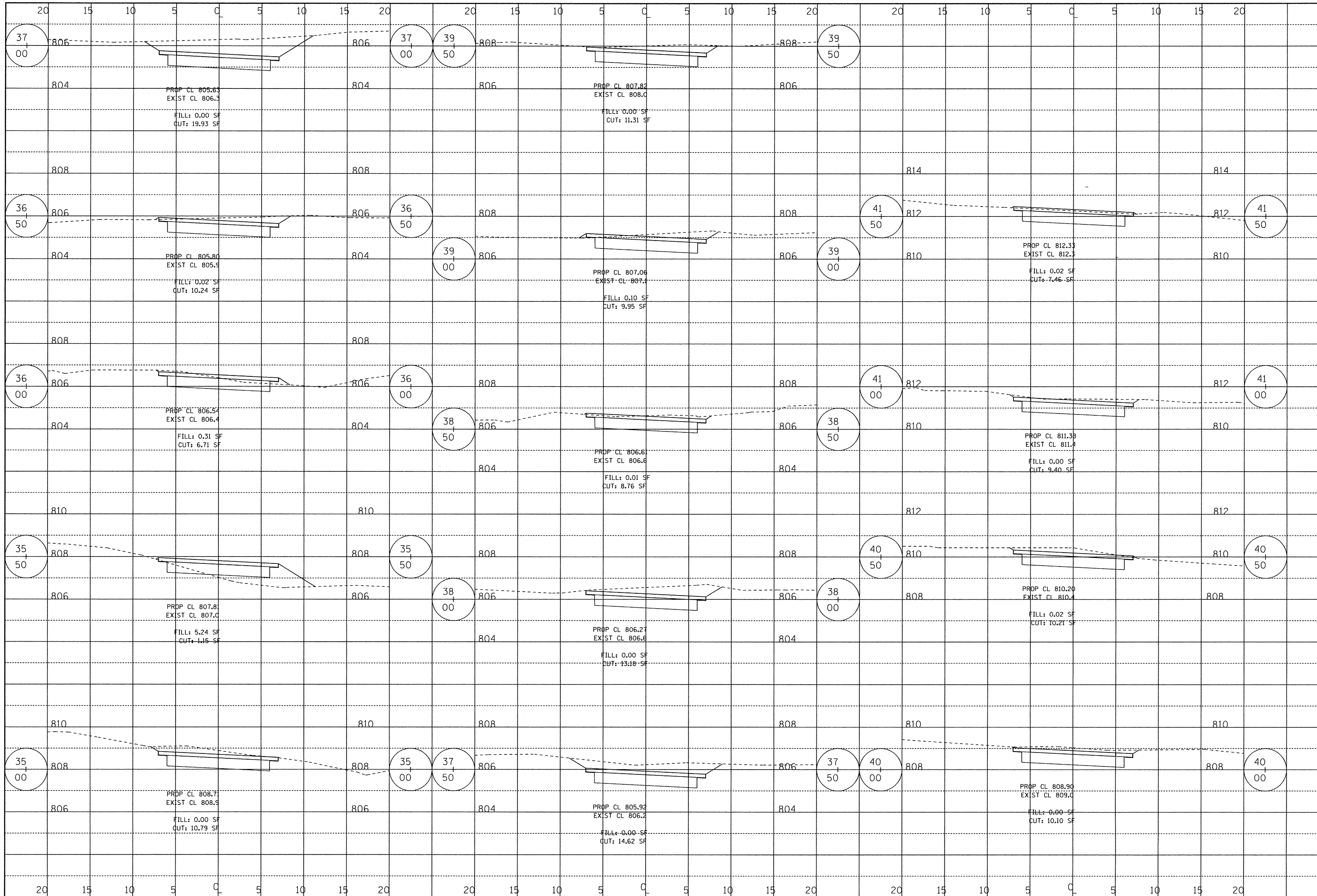


SCALE 1" = 2' V
1" = 5' H

APPROVED BY: _____
DATE: _____

DESIGN BY: GSK
REVISED: _____
CROSS SECTIONS STA 29+00 TO 34+50
BENJAMIN SCHOOL TRAIL - SAFE ROUTES TO SCHOOL SECTION 16-00359-00-BT

SHEET 10 OF 14



PROP CL 805.63
EXIST CL 806.3
FILL: 0.00 SF
CUT: 19.93 SF

PROP CL 807.82
EXIST CL 808.0
FILL: 0.00 SF
CUT: 11.31 SF

PROP CL 805.80
EXIST CL 805.9
FILL: 0.02 SF
CUT: 10.24 SF

PROP CL 807.06
EXIST CL 807.1
FILL: 0.10 SF
CUT: 9.95 SF

PROP CL 806.54
EXIST CL 806.4
FILL: 0.31 SF
CUT: 6.71 SF

PROP CL 806.6
EXIST CL 806.6
FILL: 0.01 SF
CUT: 8.76 SF

PROP CL 807.81
EXIST CL 807.0
FILL: 5.24 SF
CUT: 1.15 SF

PROP CL 806.27
EXIST CL 806.6
FILL: 0.00 SF
CUT: 13.18 SF

PROP CL 808.71
EXIST CL 808.9
FILL: 0.00 SF
CUT: 10.79 SF

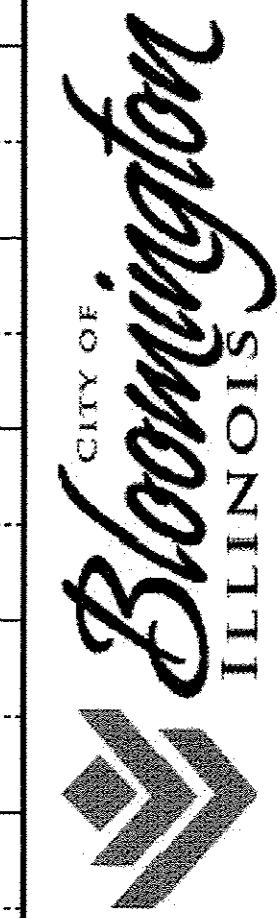
PROP CL 805.92
EXIST CL 806.2
FILL: 0.00 SF
CUT: 14.62 SF

PROP CL 812.33
EXIST CL 812.3
FILL: 0.02 SF
CUT: 7.46 SF

PROP CL 811.38
EXIST CL 811.4
FILL: 0.00 SF
CUT: 9.40 SF

PROP CL 810.20
EXIST CL 810.4
FILL: 0.02 SF
CUT: 10.21 SF

PROP CL 809.90
EXIST CL 809.0
FILL: 0.00 SF
CUT: 10.10 SF



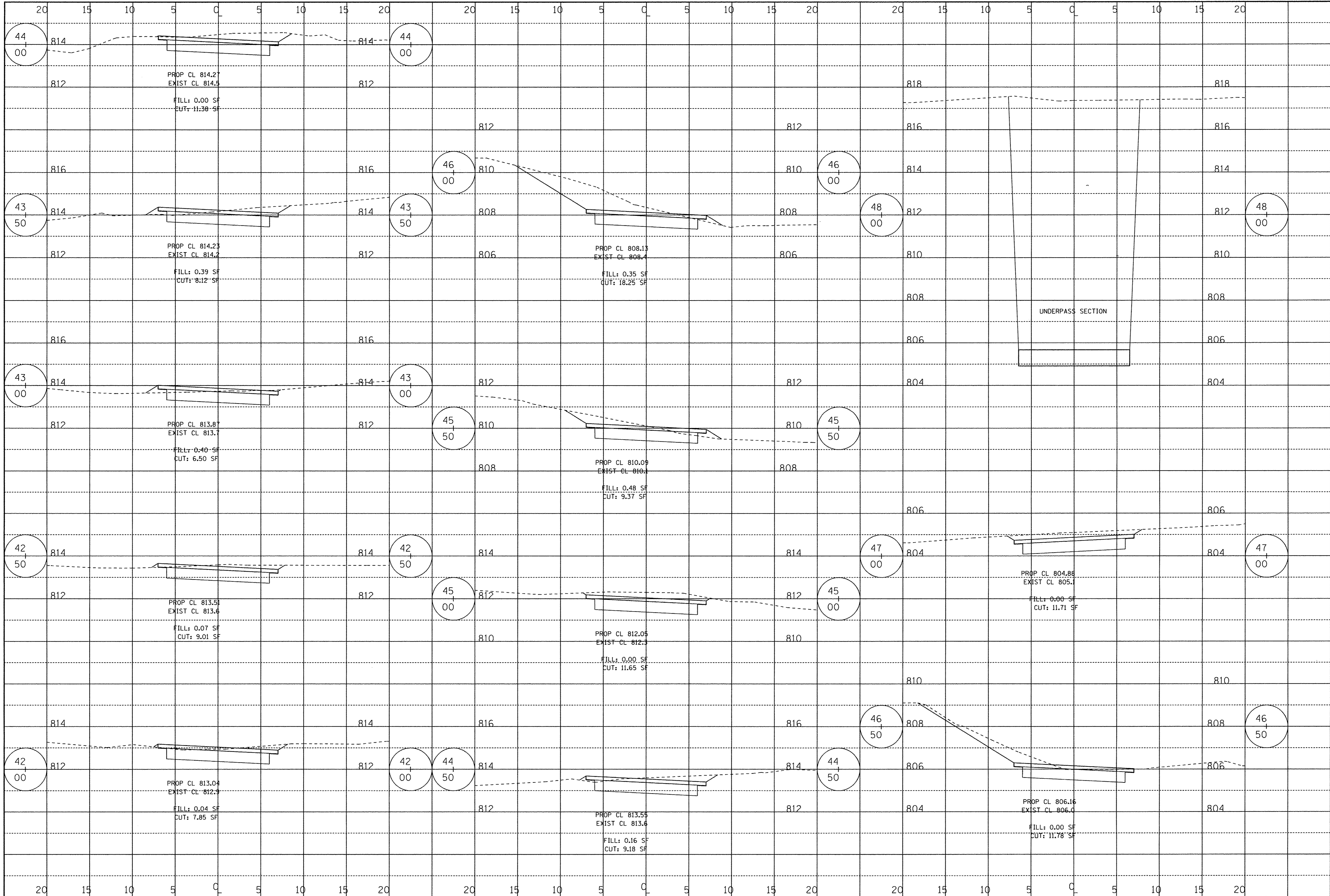
SCALE 1" = 2' V
1" = 5' H

BY: _____
APPROVED: _____
DATE: _____

DESIGN BY: GSK
REVISED: _____
CROSS SECTIONS STA 35+00 TO 41+50

BENJAMIN SCHOOL TRAIL - SAFE ROUTES TO SCHOOL SECTION 16-00359-00-BT

SHEET 11 OF 14



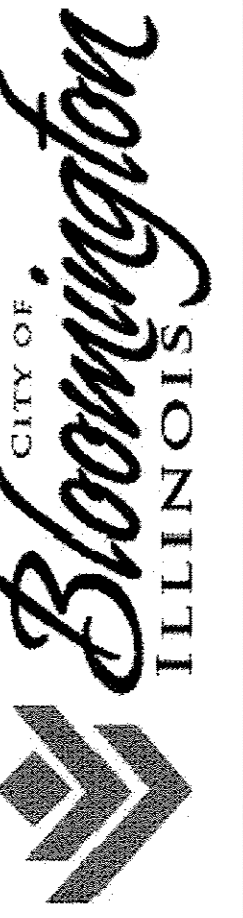
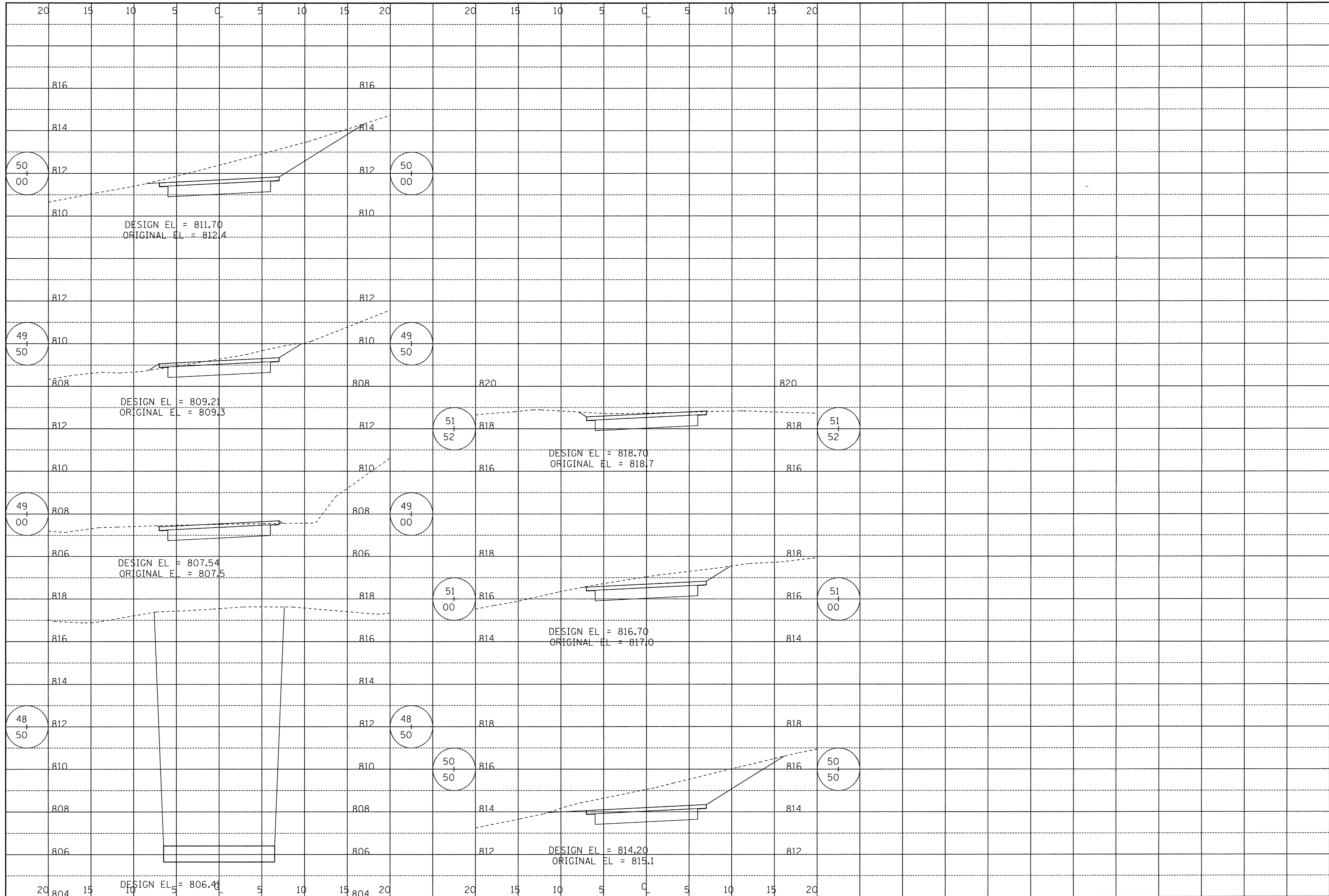
SCALE 1" = 2' V
1" = 5' H

APPROVED BY: _____
DATE: _____

DESIGN BY: GSK
REVISED: _____
CROSS SECTIONS STA 42+00 TO 48+00

SHEET 120F 14

BENJAMIN SCHOOL TRAIL - SAFE ROUTES TO SCHOOL SECTION 16-00359-00-BT



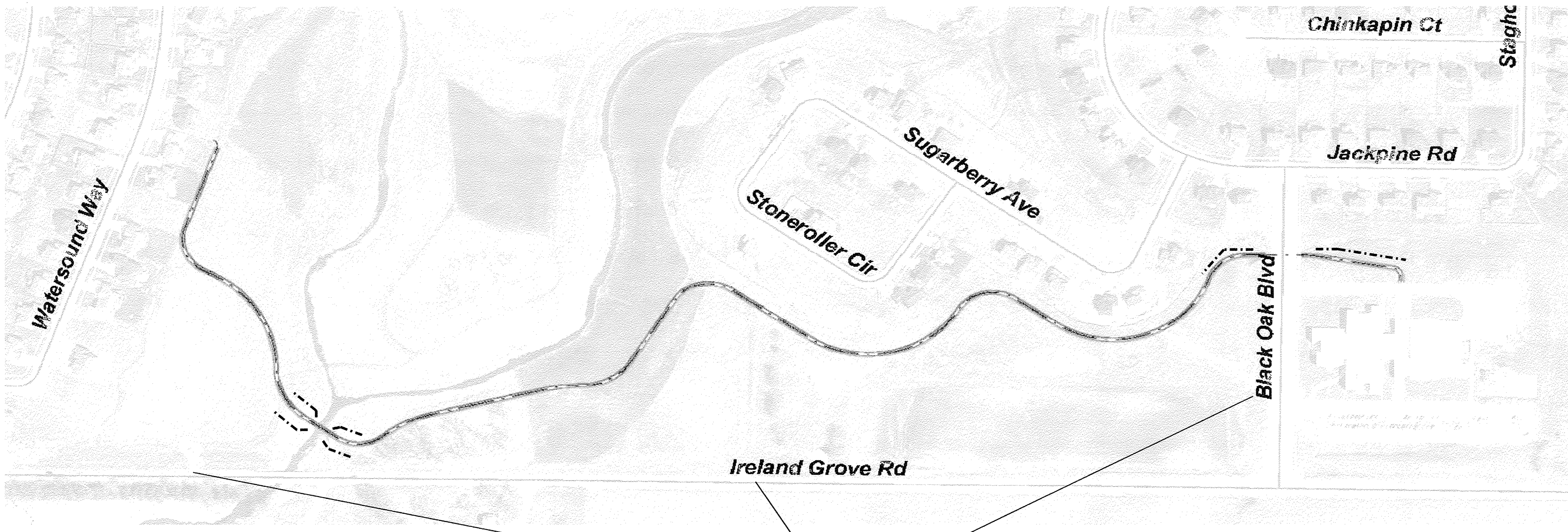
SCALE 1" = 2' V
1" = 5' H

BY :
APPROVED DATE :

DESIGN BY : GSK
REVISED :
CROSS SECTIONS STA 48+50 TO 51+52

SHEET 130F14

BENJAMIN SCHOOL TRAIL - SAFE ROUTES TO SCHOOL SECTION 16-00359-00-BT



----- SILT FENCE

STABILIZED CONSTRUCTION ENTRANCE



DESIGN BY: CSK
SWPPP

REVISIONS: ---/---/---

SCALE: NONE

SHEET
14 OF 14

SECTION 16-00359-00-BT

BENJAMIN SCHOOL TRAIL