

STATE OF ILLINOIS
DEPARTMENT OF TRANSPORTATION
DIVISION OF HIGHWAYS

**PROPOSED
HIGHWAY PLANS**

ROUTE IL 9(FAP 693)
SECTION (12B)BP

TYPE of IMPROVEMENT BRIDGE PAINTING
TAZEWELL COUNTY

C-94-051-16

F.A.P. RTE.	SECTION	COUNTY	TOTAL SHEETS	SHEET NO.
IL 9(FAP 693)	12B1BP	TAZEWELL	24	1
		ILLINOIS	CONTRACT NO. 68D12	

D-94-021-16



FOR INDEX OF SHEETS, SEE SHEET NO. 1

2 SUMMARY OF QUANTITIES

3. COMMITMENTS AND GENERAL NOTES

4 - 24 PLAN SHEETS

HIGHWAY STANDARDS

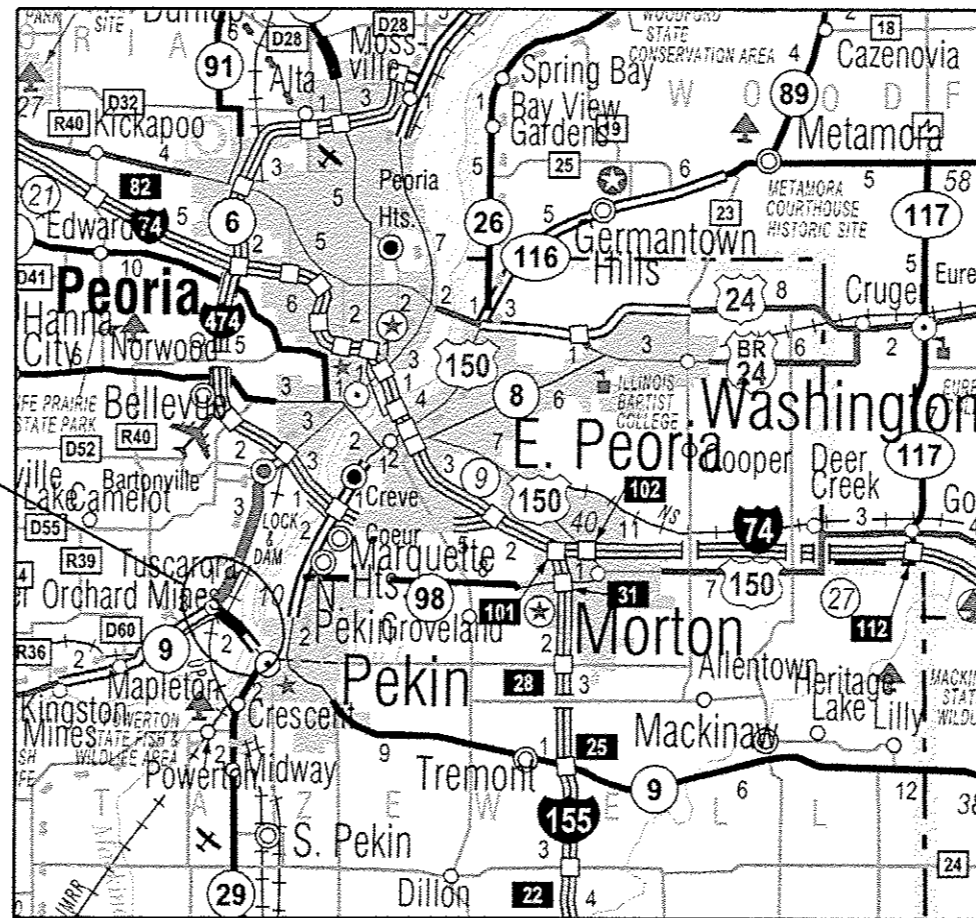
701101-05

701106-02

701423-10

701901-06

Location 1
S.N. 090-0114



AADT

S.N. 090 - 0114, 14,100

J.U.L.I.E.
JOINT UTILITY LOCATION INFORMATION FOR EXCAVATION
1-800-892-0123
OR 811

PROJECT ENGINEER RICH DOTSON (309) 671-3455

PROJECT MANAGER TOM INGLIS (309) 671-3450

CATALOG NO. 035389-00D

CONTRACT NO. 68D12

This project consist of cleaning and painting the beam ends 10 feet at the abutments and 10 feet both sides of the deck expansion joints.

STATE OF ILLINOIS
DEPARTMENT OF TRANSPORTATION

SUBMITTED 10/18 2016
Kel A. Smith
REGION THREE ENGINEER

Dec 9 2016
Maureen M. Addis P.E.
ENGINEER OF DESIGN AND ENVIRONMENT

Dec 9 2016
Maureen M. Addis
DIRECTOR OF PROGRAM DEVELOPMENT

PRINTED BY THE AUTHORITY
OF THE STATE OF ILLINOIS

COMMITMENTS

No commitments have been made for this project.

GENERAL NOTES

Cleaning and Painting shall be as specified in the Special Provisions for "Cleaning and Painting Existing Structural Steel". All beams, brackets and all other structural steel shall be cleaned per Near White Blast Cleaning SSPC-SP10 according to the following schedule:

Bridge Location 1 S.N. 090-0114. Shall be cleaned and painted 10 feet at the abutments and 10 feet both sides of the deck expansion joints at Pier 5, 6 and 9.

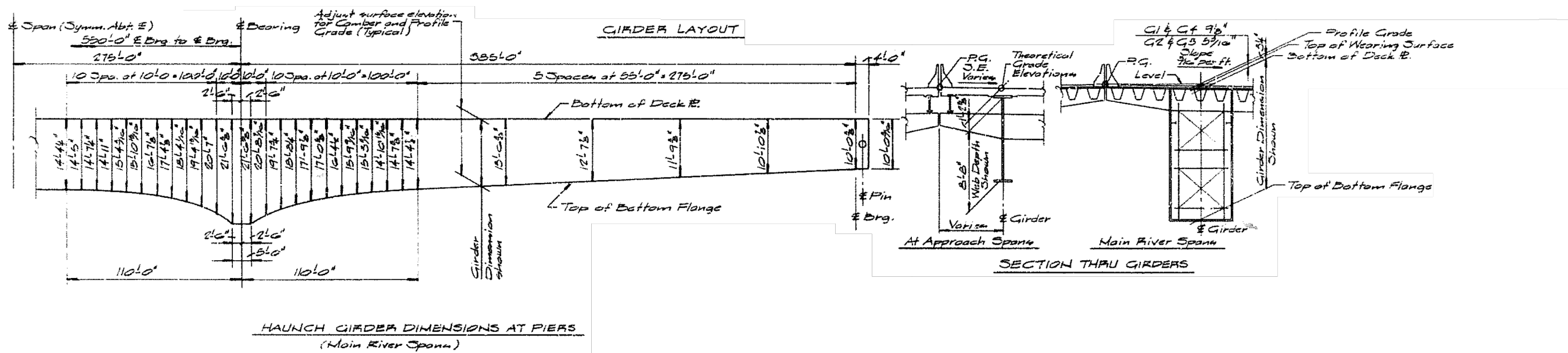
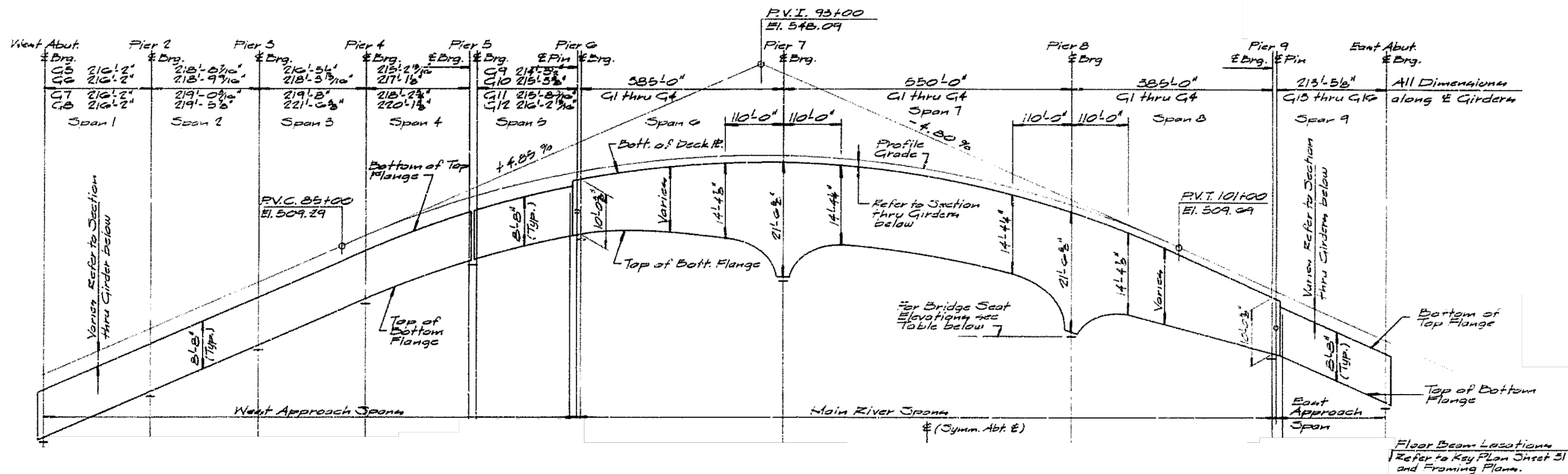
Bridge Location 1 S.N. 090-0114, Paint system 1 shall be used and all top coat shall match the Federal Color Standard 595a 20045.

AIR MONITORS -2 air monitors per location.

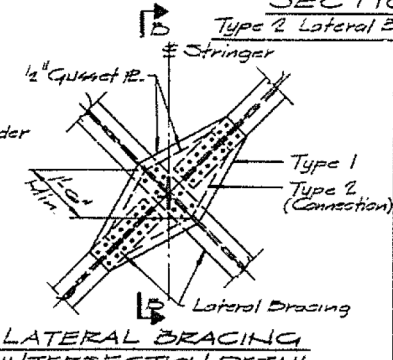
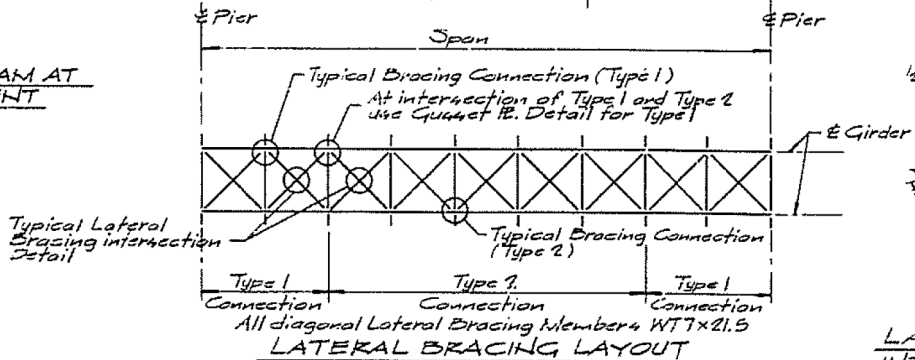
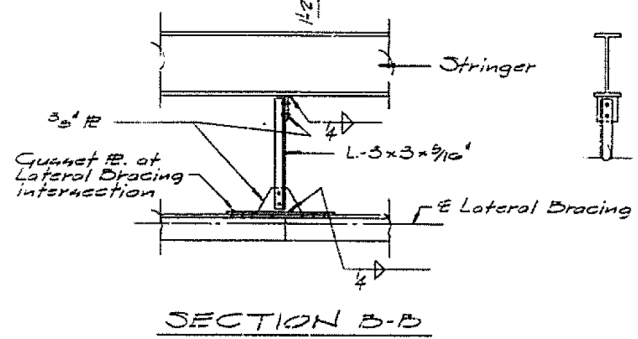
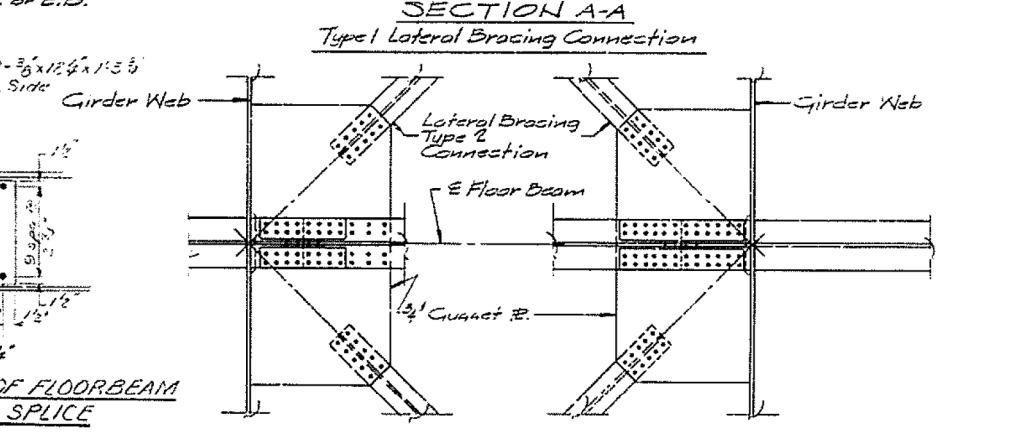
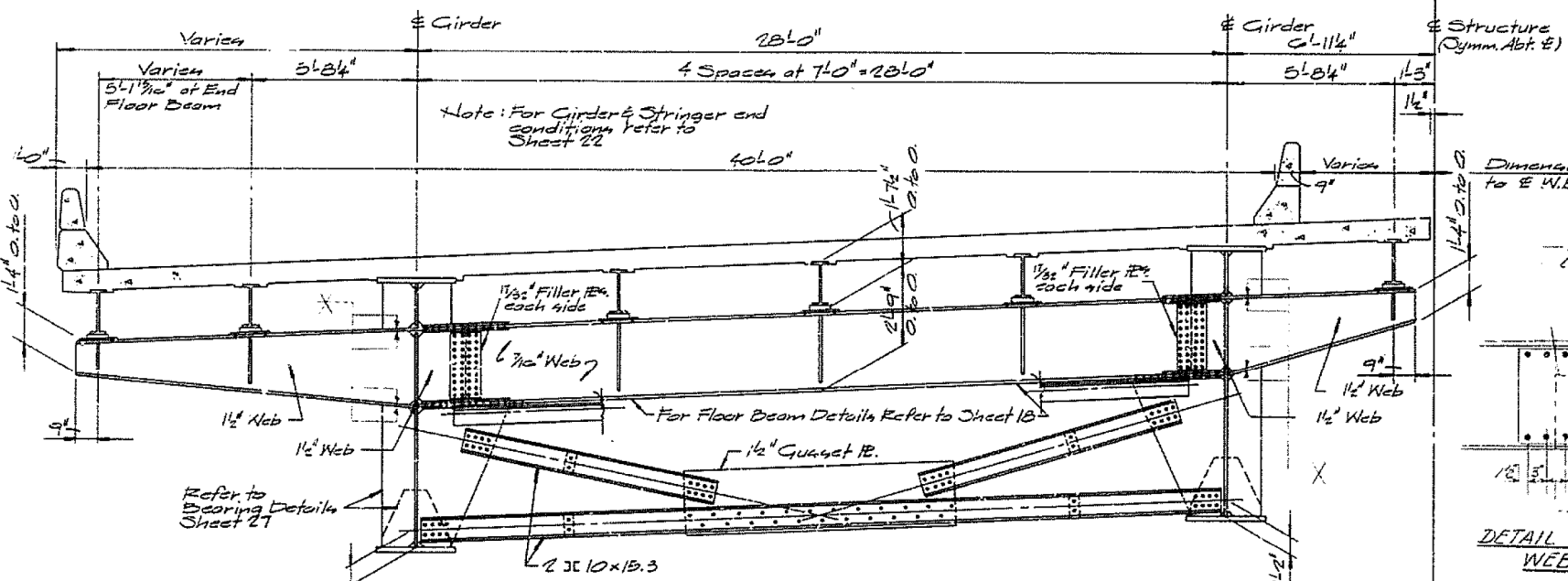
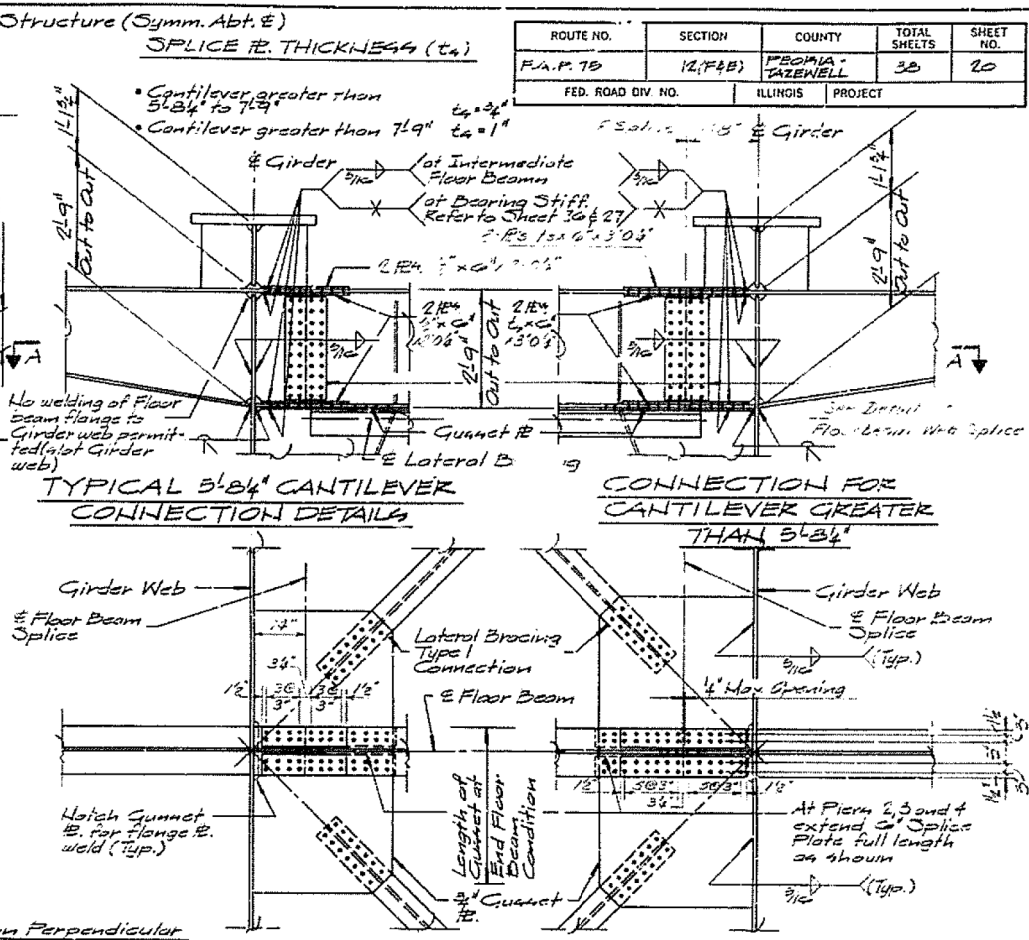
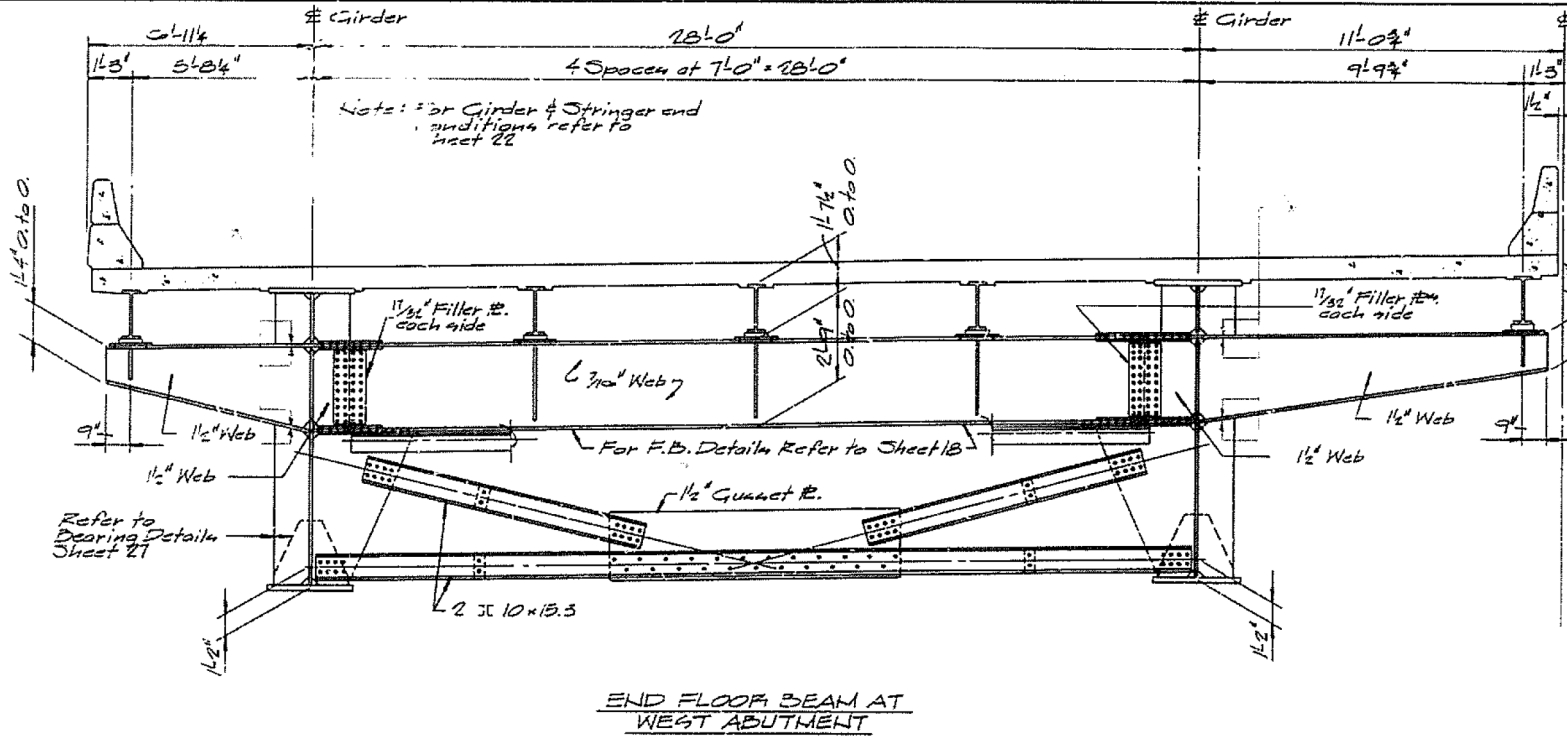
QP1 & QP 2 required for this Project.

FILE NAME = 68D12 PAINTING 2017.dgn	USER NAME = keithbr	DESIGNED - DRAWN -	REVISED - REVISED -	STATE OF ILLINOIS DEPARTMENT OF TRANSPORTATION	COMMITMENTS AND GENERAL NOTES			F.A.P. RTE.	SECTION	COUNTY	TOTAL SHEETS	SHEET NO.
Default	PLOT SCALE = 100.0000' / 1in.	CHECKED - DATE -	REVISED - REVISED -					•	(12B)BP	TAZEWELL	24	3
	PLOT DATE = 10/18/2016				• IL 9 (FAP693)				68D12			
					SCALE:	SHEET	OF	SHEETS	STA.	TO STA.	ILLINOIS FED. AID PROJECT	

INFORMATION ONLY S.N. 090-0114

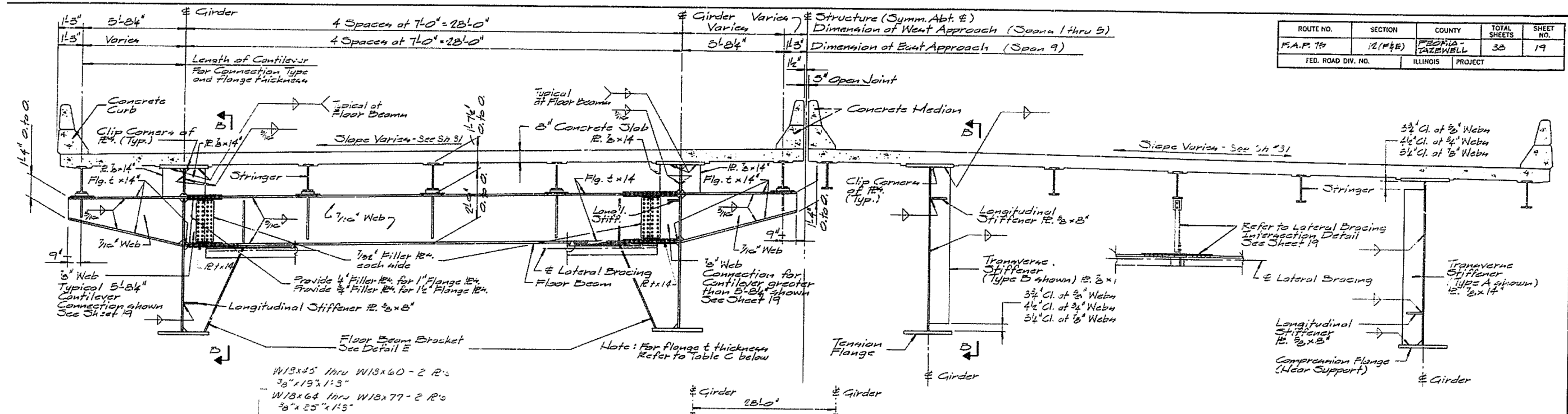


ROUTE NO.	SECTION	COUNTY	TOTAL SHEETS	SHEET NO.
F.A.P. 75	12(F&E)	PEORIA-TAZEWELL	32	20
FED. ROAD DIV. NO.	ILLINOIS	PROJECT		



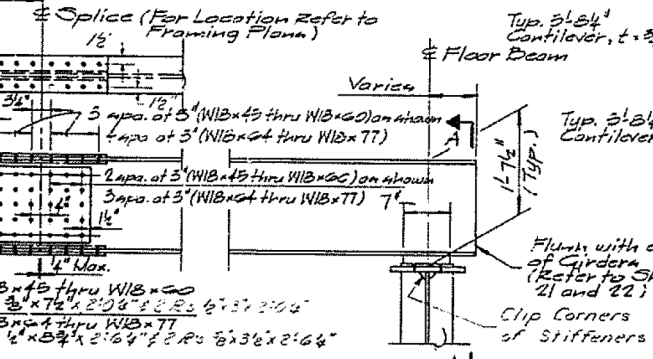
STATE OF ILLINOIS
DEPARTMENT OF TRANSPORTATION
GIRDERS GS THRU G16
FLOOR BEAM DETAILS
PROJECT:
ILL. 9 over ILLINOIS RIVER
F.A.P. 75 SECTION 12(F&E)
PEORIA-TAZEWELL COUNTIES
STA. 96+50 1967 37
THE ENGINEERS COLLABORATIVE SHEET

ROUTE NO.	SECTION	COUNTY	TOTAL SHEETS	SHEET NO.
F.A.P. 75	12(F&E)	PEORIA-TAZEWELL	33	19
FED. ROAD DIV. NO.	ILLINOIS	PROJECT		



1. Provide filler R's as required at change of beam section.
2. At section changes provide splice for the smaller beam weight.

SECTION AT TYPICAL INTERMEDIATE FLOOR BEAM



SECTION BETWEEN FLOOR BEAMS

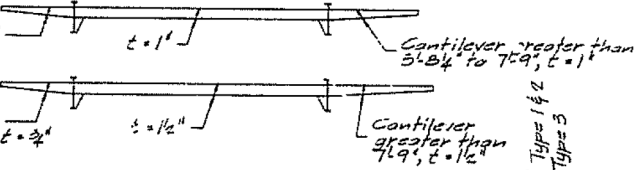
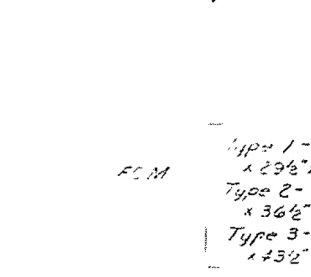


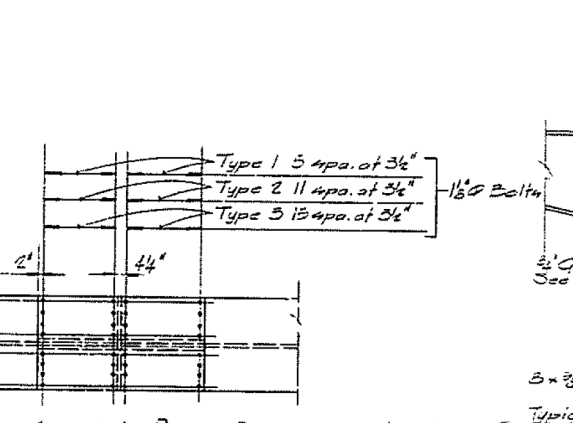
TABLE C

Flange Shop Butt Joint
1 1/2"
2 1/2"

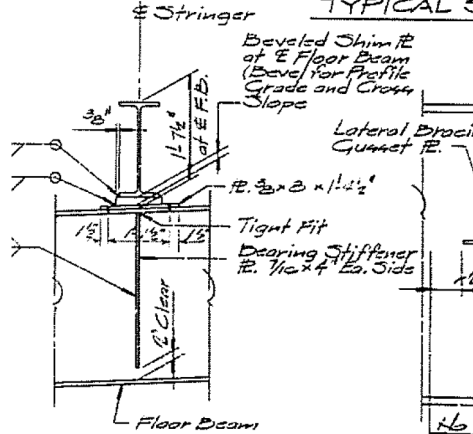
SECTION D-D (Transition of Flange of Different Widths)



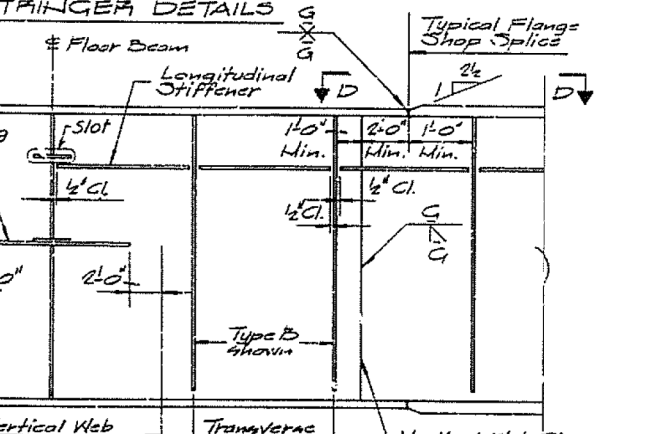
SECTION BETWEEN FLOOR BEAMS



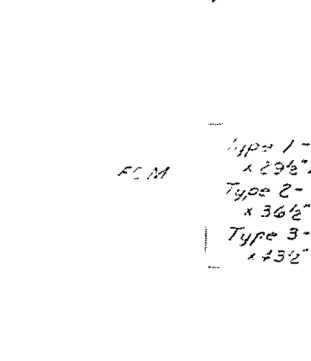
AT INTERMEDIATE FLOOR BEAM



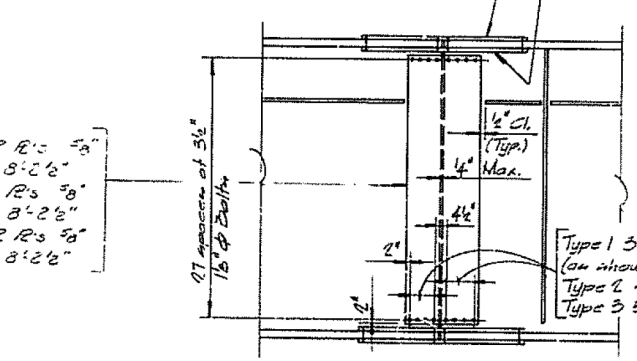
SPLICE DETAIL



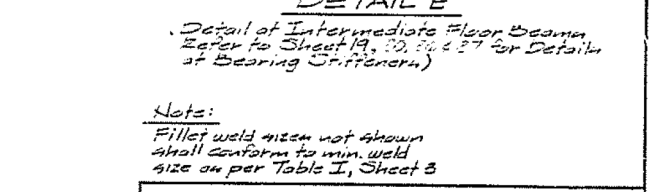
AT END FLOOR BEAM



TYPICAL STRINGER DETAILS



DETAIL E



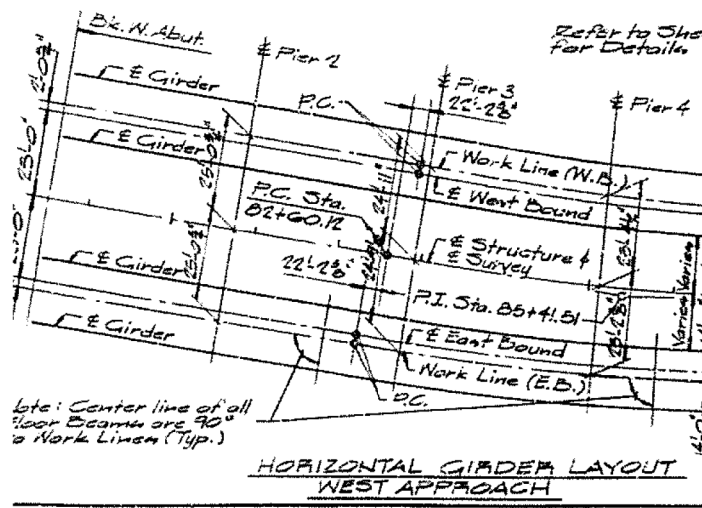
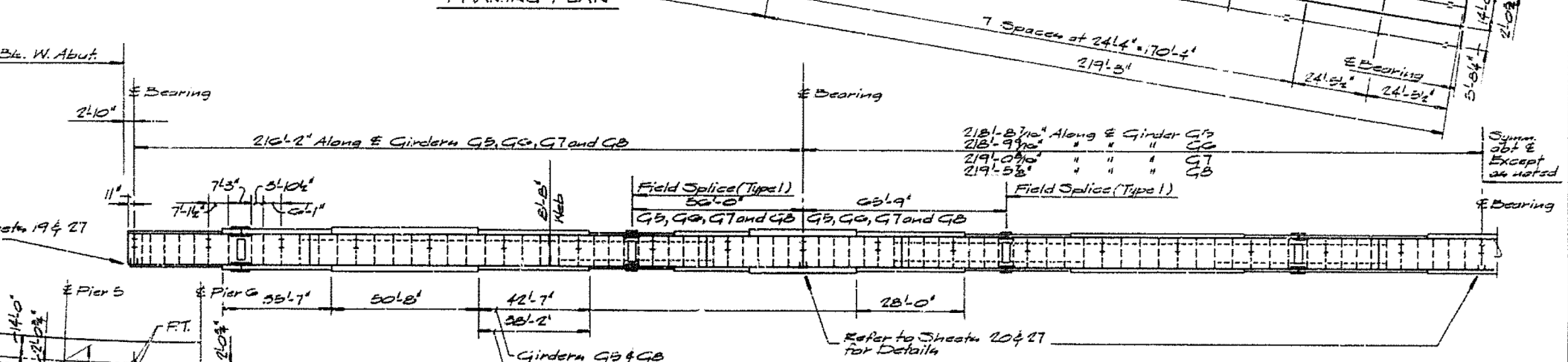
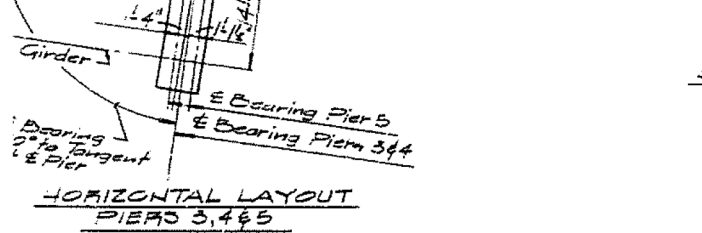
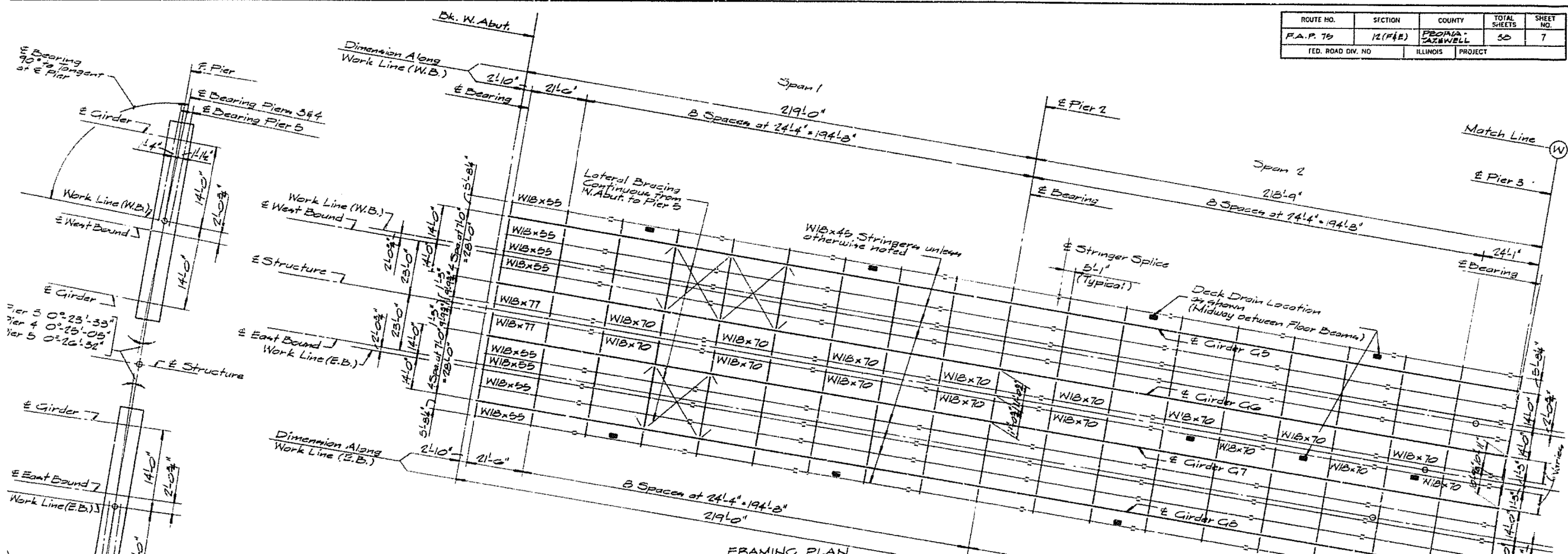
Notes:
Fillet weld when not shown shall conform to min. weld size as per Table I, Sheet 3

STATE OF ILLINOIS
DEPARTMENT OF TRANSPORTATION
GIRDERS GE THROUGH
TYPICAL DETAILS
PROJECT:
ILL. 9 over ILLINOIS RIVER
F.A.P. 75 SECTION 12(F&E)
PEORIA-TAZEWELL COUNTIES
STA. 96+50

THE ENGINEERS COLLABORATIVE
SHEET 19 OF 27

GIRDER FIELD SPLICES DETAILS
All bolts in web and flange field splices shall be 1 1/2" φ. (1 1/2" φ holes)
For field splice locations refer to Sheets 1, 7 and 10.
All splices shall be vertical under total dead load.

ROUTE NO.	SECTION	COUNTY	TOTAL SHEETS	SHEET NO.
F.A.P. 75	12(F&E)	PEORIA-TAZEWELL	30	7
FED. ROAD DIV. NO.		ILLINOIS	PROJECT	



LAYOUT CURVE DATA

	Work Line (W.B.)	Work Line (E.B.)
Δ = 9°-49'-28.1"	Δ = 9°-49'-28.1"	Δ = 9°-49'-28.1"
D = 1°-45'-04"	D = 1°-45'-04"	D = 1°-41'-56"
P = 3274.04'	P = 3271.96'	P = 3276.11'
T = 281.39'	T = 281.21'	T = 281.57'
L = 501.40'	L = 501.05'	L = 501.75'

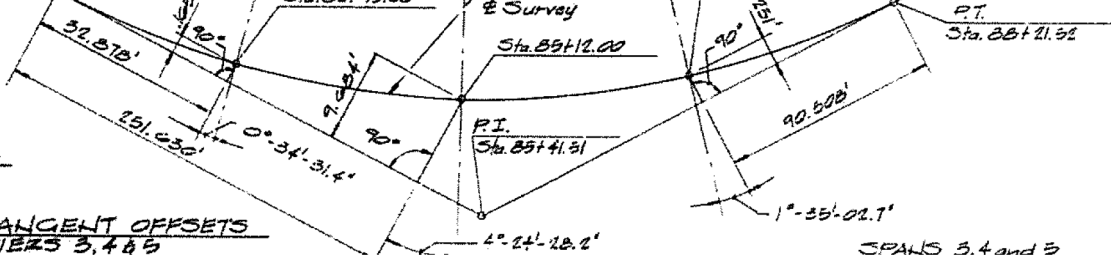
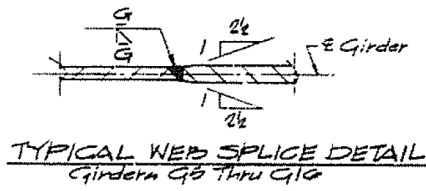
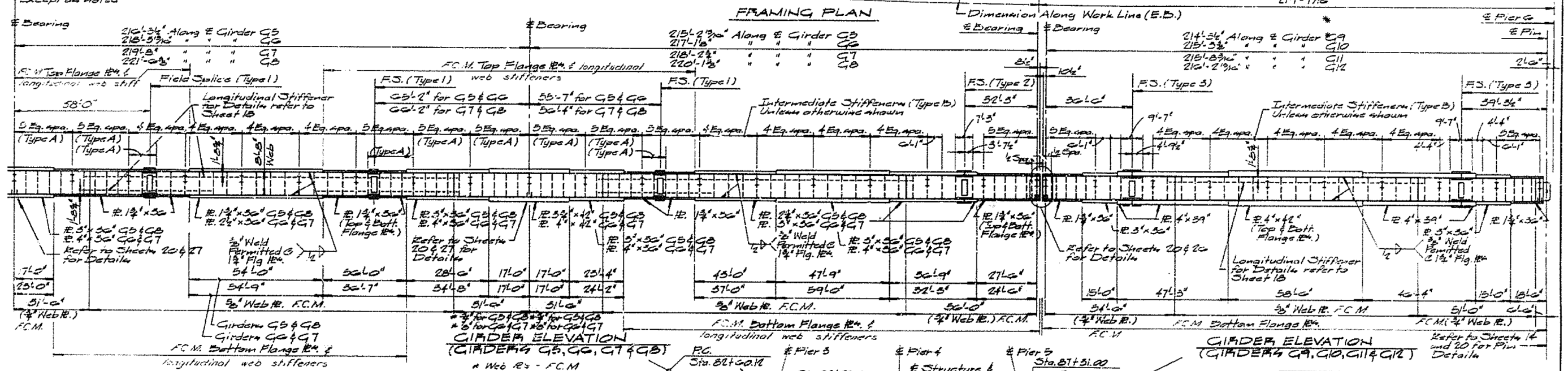
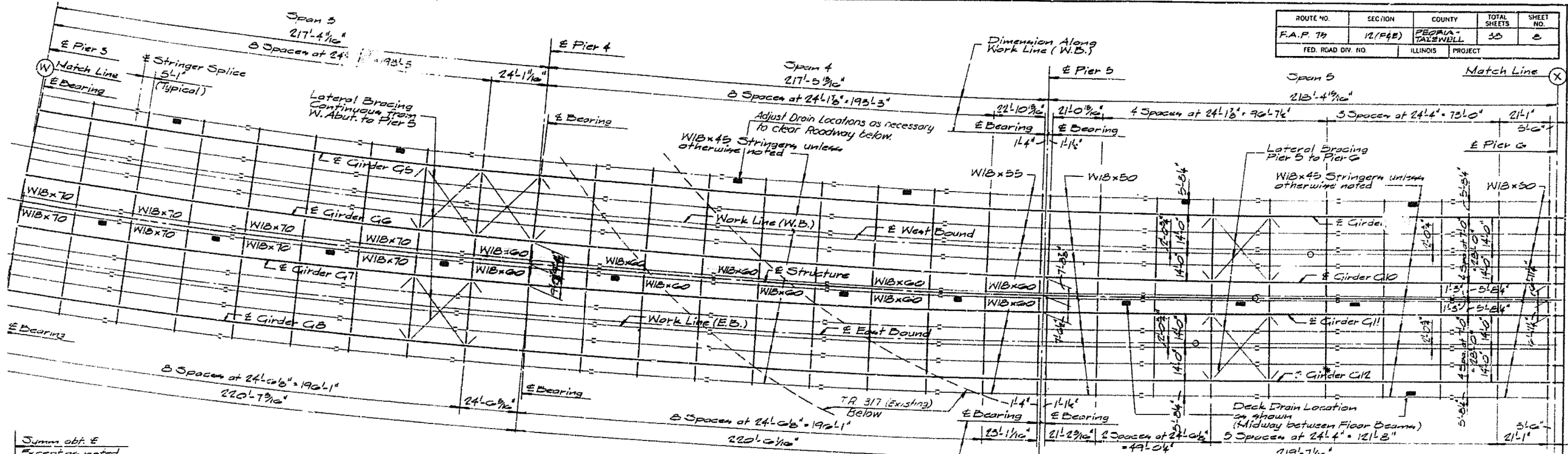
GIRDER ELEVATION
GIRDERS G5, G6, G7 & G8
For details not shown see
Sheet 7

STATE OF ILLINOIS
DEPARTMENT OF TRANSPORTATION
FRAMING PLAN AND
GIRDER ELEVATIONS
PROJECT:
ILL. 9 over ILLINOIS RIVER
F.A.P. 75 SECTION 12(F&E)
PEORIA-TAZEWELL COUNTIES
STA. 96+30

THE ENGINEERS COLLABORATIVE
CHICAGO ILLINOIS

SHEET
6 OF 37

ROUTE NO.	SECTION	COUNTY	TOTAL SHEETS	SHEET NO.
F.A.P. 75	12(F&E)	PEORIA-TAZEWELL	35	8
FED. ROAD DIV. NO.	ILLINOIS	PROJECT		

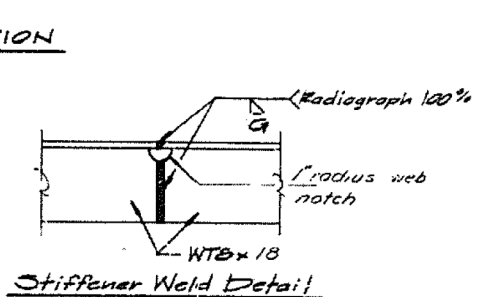
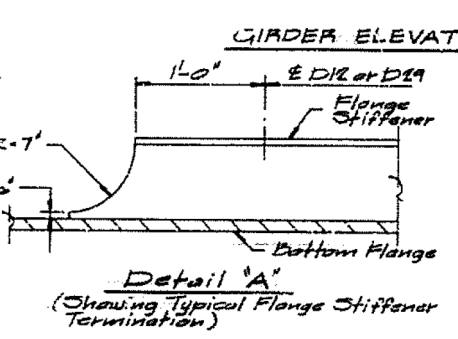
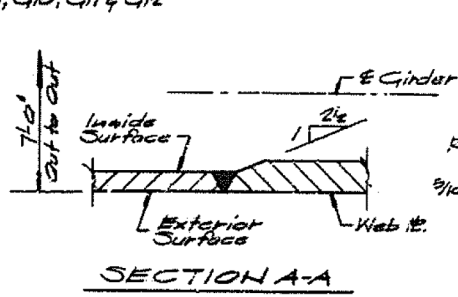
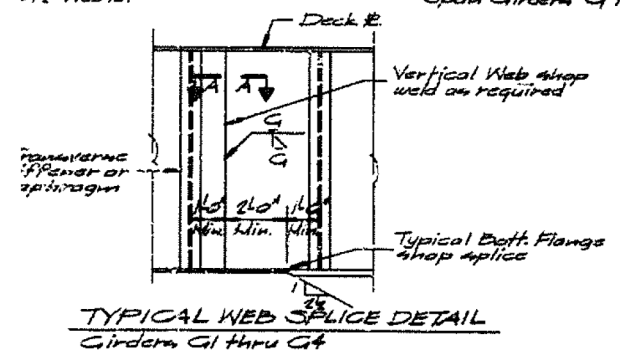
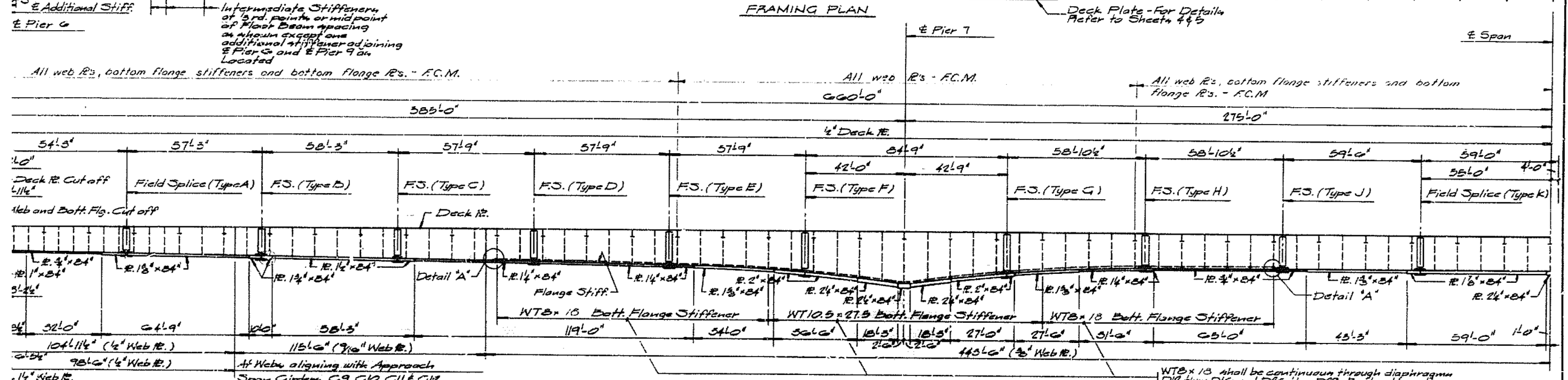
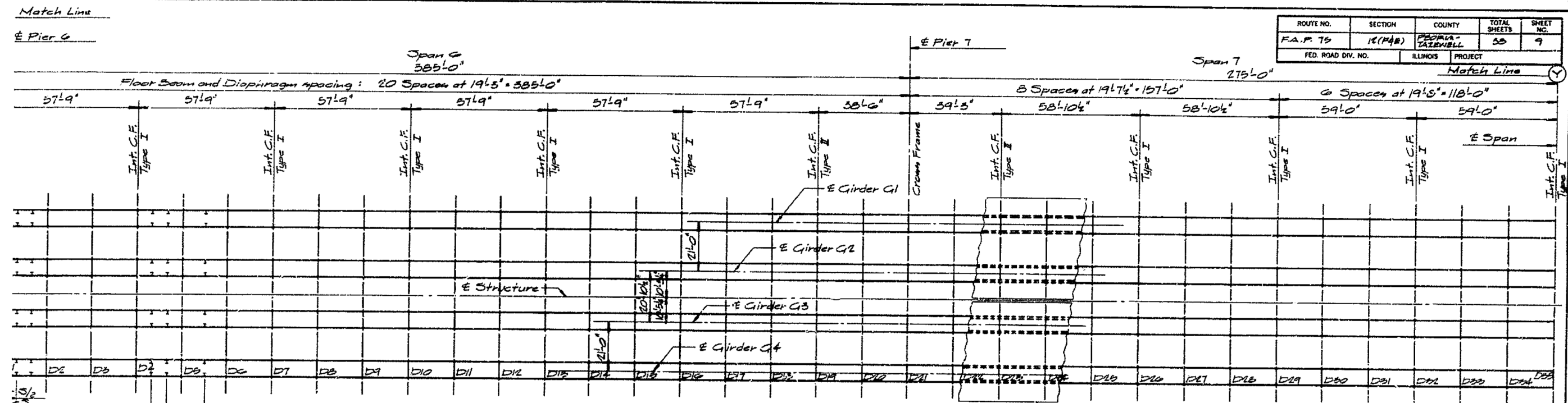


STATE OF ILLINOIS
 DEPARTMENT OF TRANSPORTATION
 FRAMING PLAN AND
 GIRDER ELEVATIONS
 PROJECT:
 ILL. 9 over ILLINOIS RIVER
 F.A.P. 75 SECTION 12(F&E)
 PEORIA-TAZEWELL COUNTIES
 STA. 96+50 766 57

THE ENGINEERS COLLABORATIVE SHEET

INFORMATION ONLY S.N. 090-0114

ROUTE NO.	SECTION	COUNTY	TOTAL SHEETS	SHEET NO.
F.A.P. 75	12(F&E)	PEORIA-TAZEWELL	50	9
FED. ROAD DIV. NO.	ILLINOIS	PROJECT	Match Line	

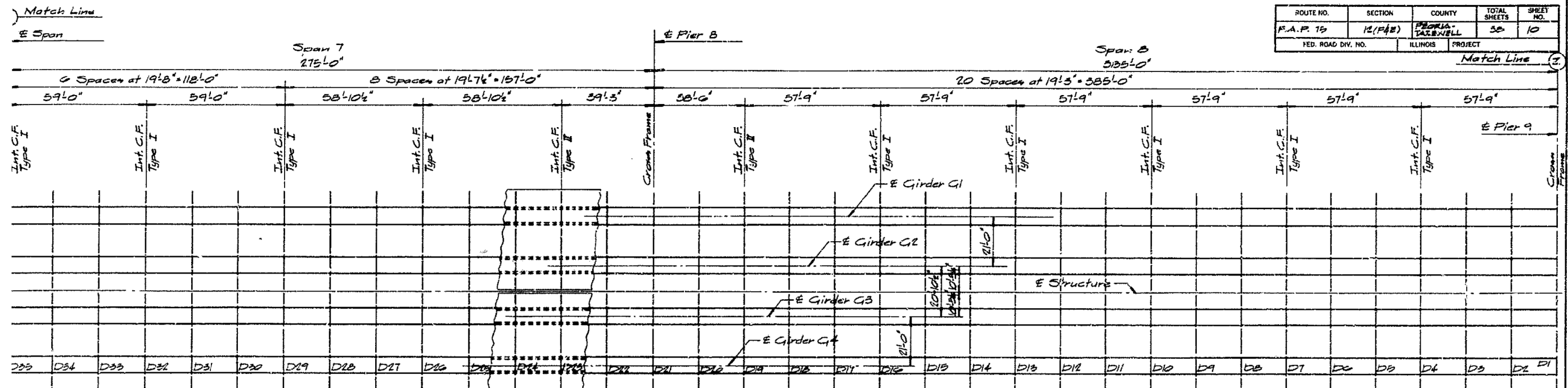


WT x 13 shall be continuous through diaphragms D12 thru D16 and D16 thru D19. Butt weld sections of stiffeners end to end as necessary to obtain req'd. length of stiffener. Refer to Stiffener Weld Detail, this sheet and Detail 'I' Sheet 12. For stiffener details at diaphragms D17 thru D19 Refer to Detail 'I' Sheet 12.

STATE OF ILLINOIS
DEPARTMENT OF TRANSPORTATION
FRAMING PLAN AND
GIRDER ELEVATIONS
PROJECT
ILL. 9 over ILLINOIS RIVER
F.A.P. 75 SECTION 12(F&E)
PEORIA-TAZEWELL COUNTIES
STA. 96+50 8 of 57
THE ENGINEERS COLLABORATIVE SHEET

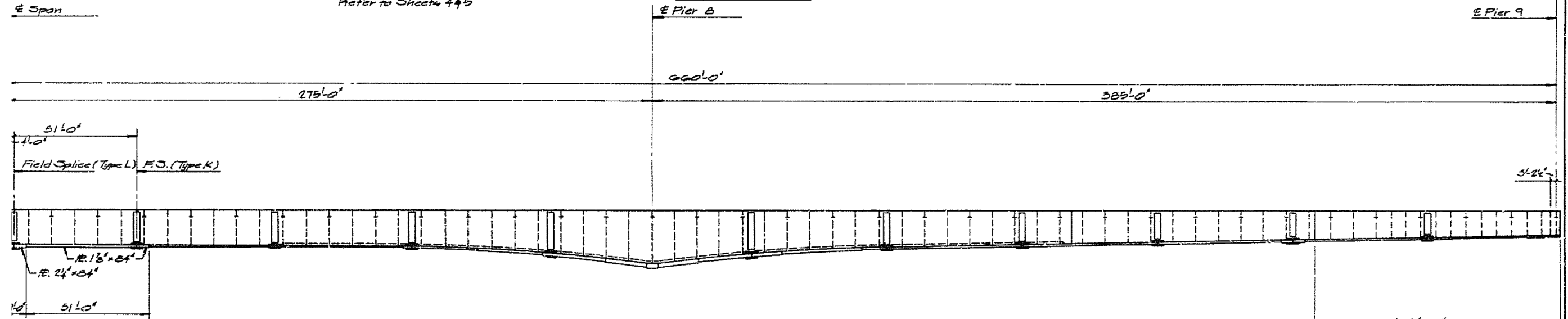
INFORMATION ONLY S.N. 090-0114

ROUTE NO.	SECTION	COUNTY	TOTAL SHEETS	SHEET NO.
F.A.P. 75	12(F&E)	PEORIA-TAZEWELL	58	10
FED. ROAD DIV. NO.	ILLINOIS PROJECT		Match Line 9	



Deck Plate - For Details Refer to Sheets 4 & 5

FRAMING PLAN



GIRDER ELEVATION

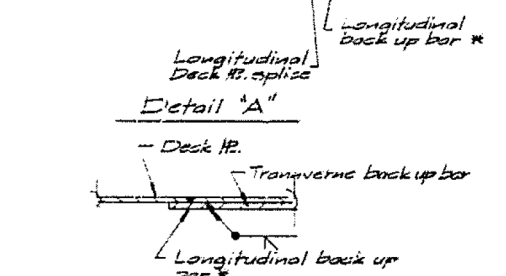
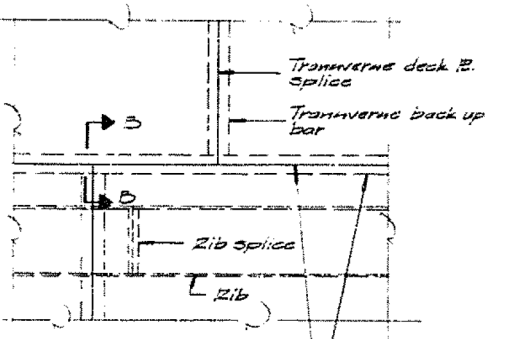
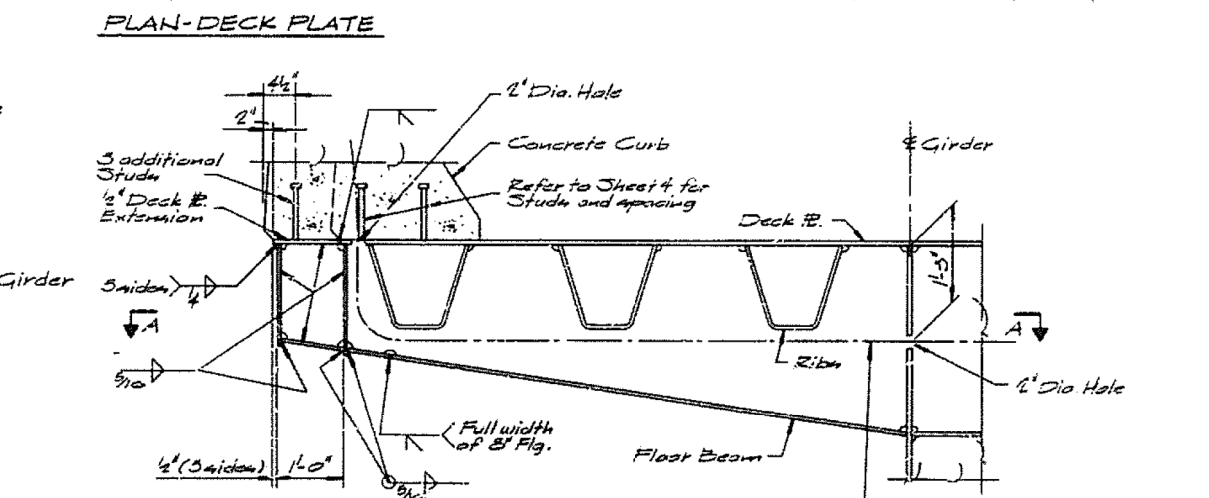
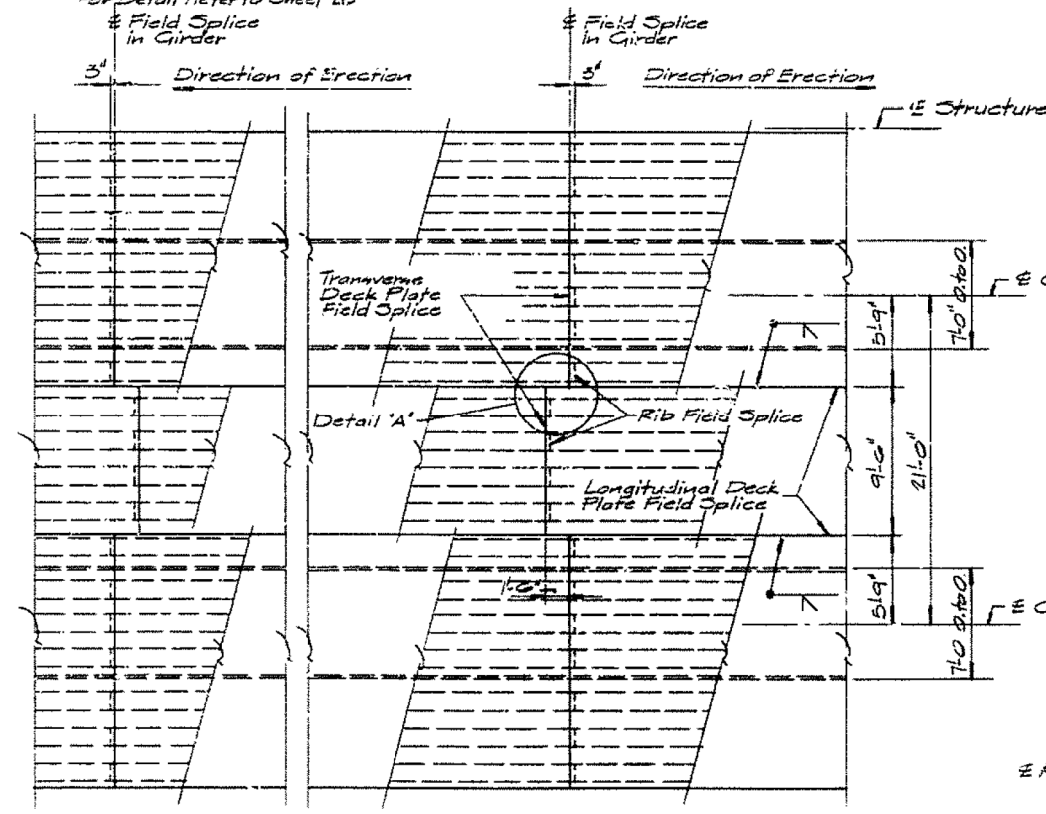
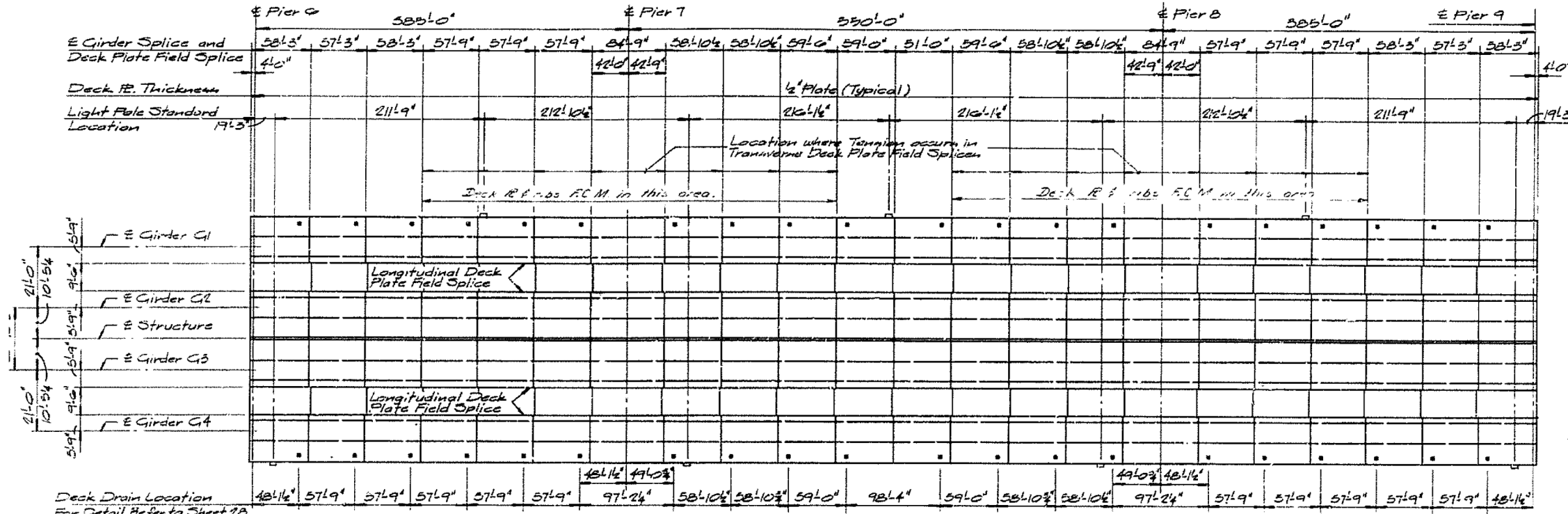
For information not shown refer to Sheet 8. Girder signs about Match Line Y except as noted.

STATE OF ILLINOIS
 DEPARTMENT OF TRANSPORTATION
 FRAMING PLAN AND
 GIRDER ELEVATIONS
 PROJECT:
 ILL. 9 over ILLINOIS RIVER
 F.A.P. 75 SECTION 12(F&E)
 PEORIA-TAZEWELL COUNTIES
 STA. 96+50 9 of 57

INFORMATION ONLY S.N. 090-0114

ROUTE NO.	SECTION	COUNTY	TOTAL SHEETS	SHEET NO.
F.A.P. 75	12(F&E)	PEORIA, TAZEWELL	35	5
FED. ROAD DIV. NO.	ILLINOIS	PROJECT		

Notes:
 The Location of Deck Plate and Girder Splices shown are in the relationship for the General Erection Scheme shown on Sheet 3. For other Erection Schemes it may be necessary to revise the Field Splice location to suit in order that the infill Deck Plate Field Splices are 1'-0" behind the forward end of the girder section being erected.



* Longitudinal back up bars shall be continuous. Sections shall be welded together with full penetration butt welds as required.

STATE OF ILLINOIS
 DEPARTMENT OF TRANSPORTATION
 ORTHOTROPIC DECK
 PLATE DETAILS
 PROJECT:
 ILL. 9 over ILLINOIS RIVER
 F.A.P. 75 SECTION 12(F&E)
 PEORIA-TAZEWELL COUNTIES
 STA. 96+50

THE ENGINEERS COLLABORATIVE
 CHICAGO ILLINOIS

SHEET
 5 OF 37

FILE NAME = 68D12 PAINTING 2017.dgn	USER NAME = keathbr	DESIGNED -	REVISED -
Default	PLOT SCALE = 100.0000' / 1"	DRAWN -	REVISED -
	PLOT DATE = 10/19/2016	CHECKED -	REVISED -
		DATE -	REVISED -

STATE OF ILLINOIS
 DEPARTMENT OF TRANSPORTATION

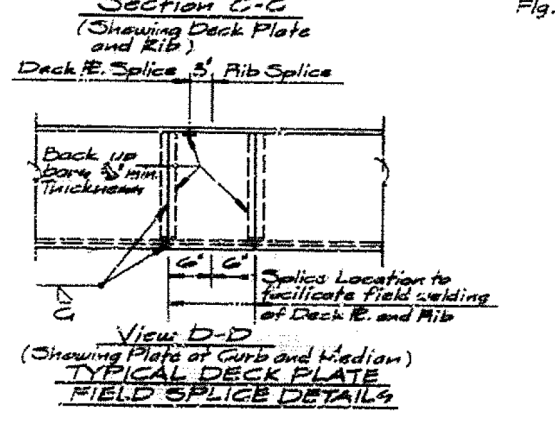
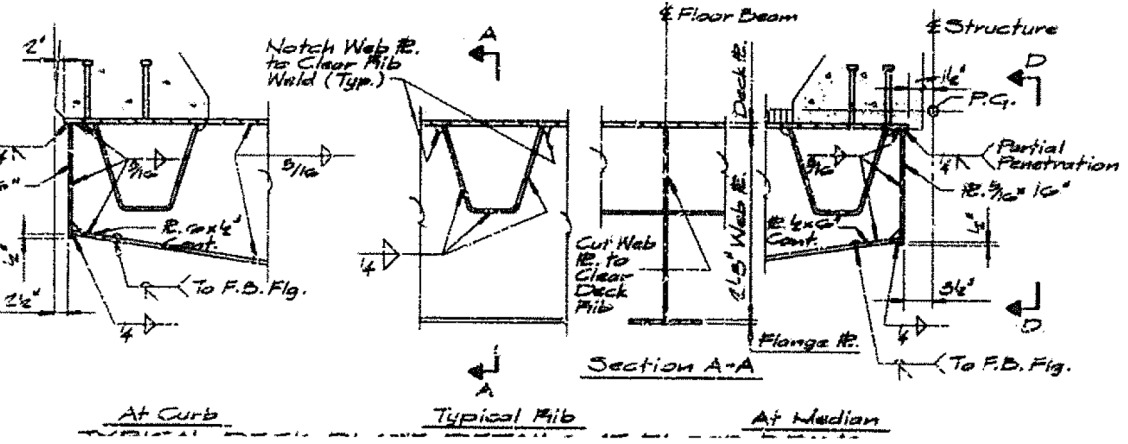
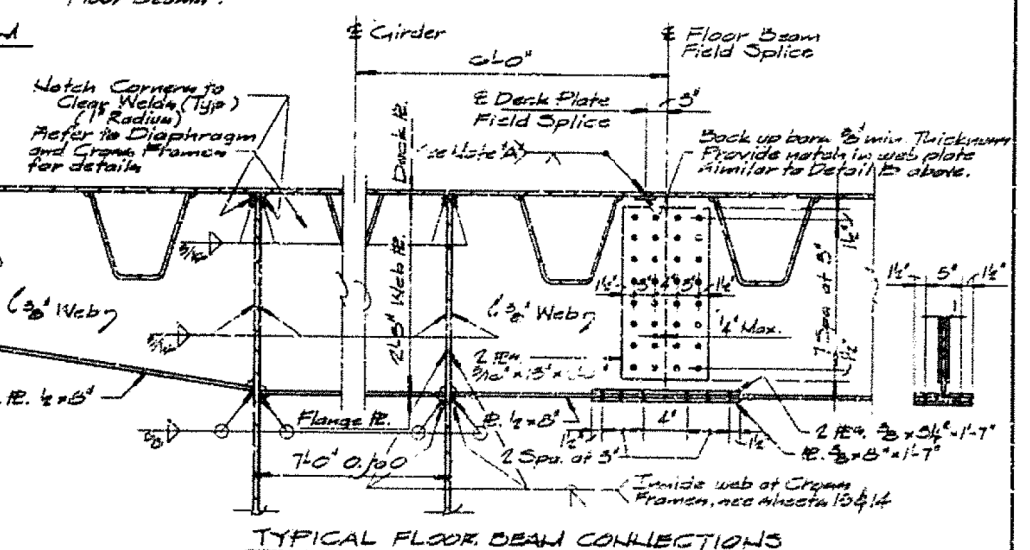
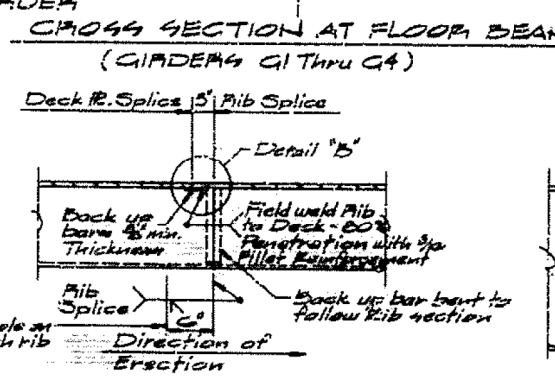
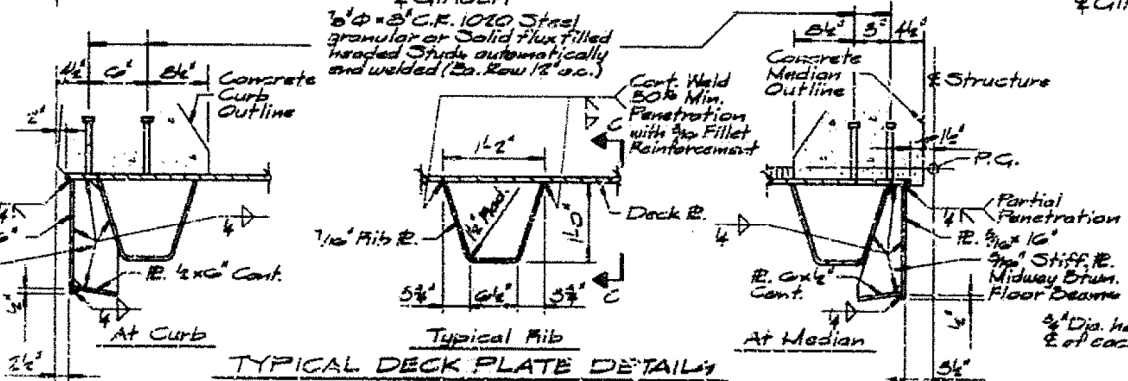
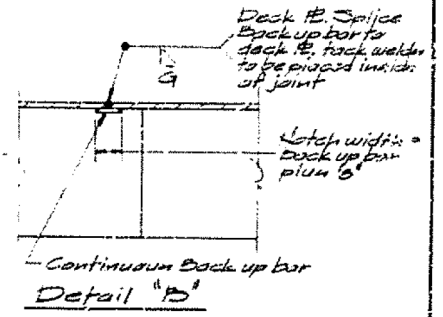
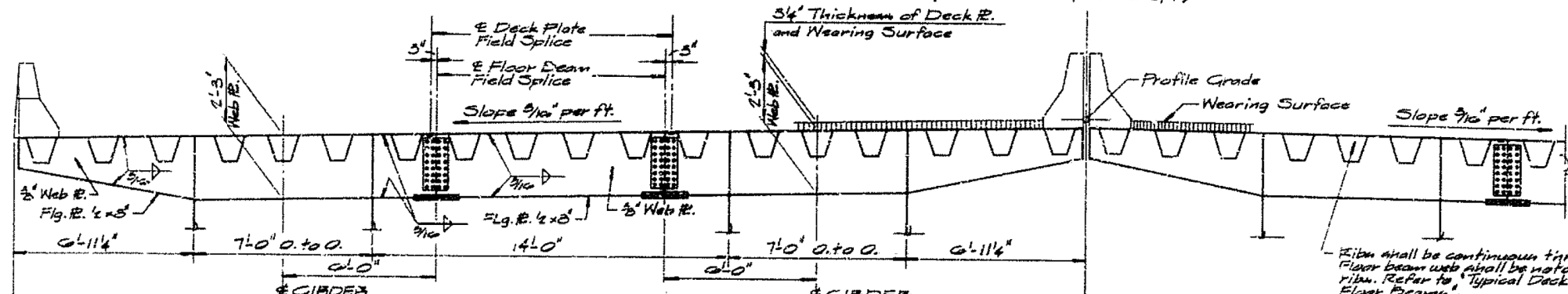
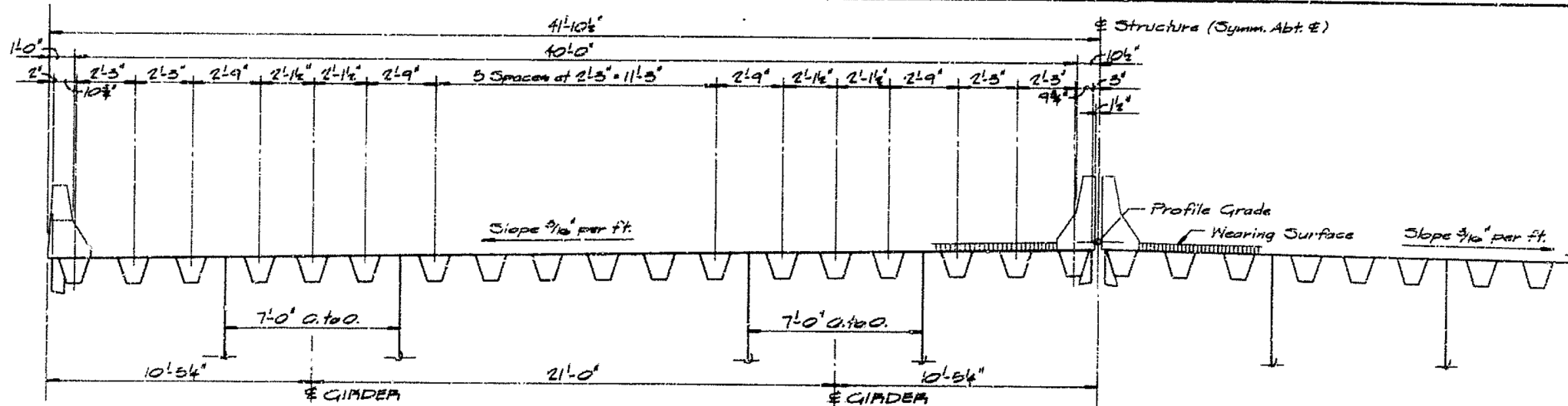
INFORMATION ONLY
 STEEL DETAILS

SCALE: SHEET OF SHEETS STA. TO STA.

F.A. RTE.	SECTION	COUNTY	TOTAL SHEETS	SHEET NO.
• IL 9 (FAP693)	(12)B/P	TAZEWELL	24	14
ILLINOIS FED. AID PROJECT				68D12

ROUTE NO.	SECTION	COUNTY	TOTAL SHEETS	SHEET NO.
F.A.P. 75	12(F&E)	PEORIA-TAZEWELL	24	5
FED. ROAD DIV. NO.	ILLINOIS PROJECT			

Notes:
For Deck Plate detail of Light Plate Standard, Refer to Sheet 5.

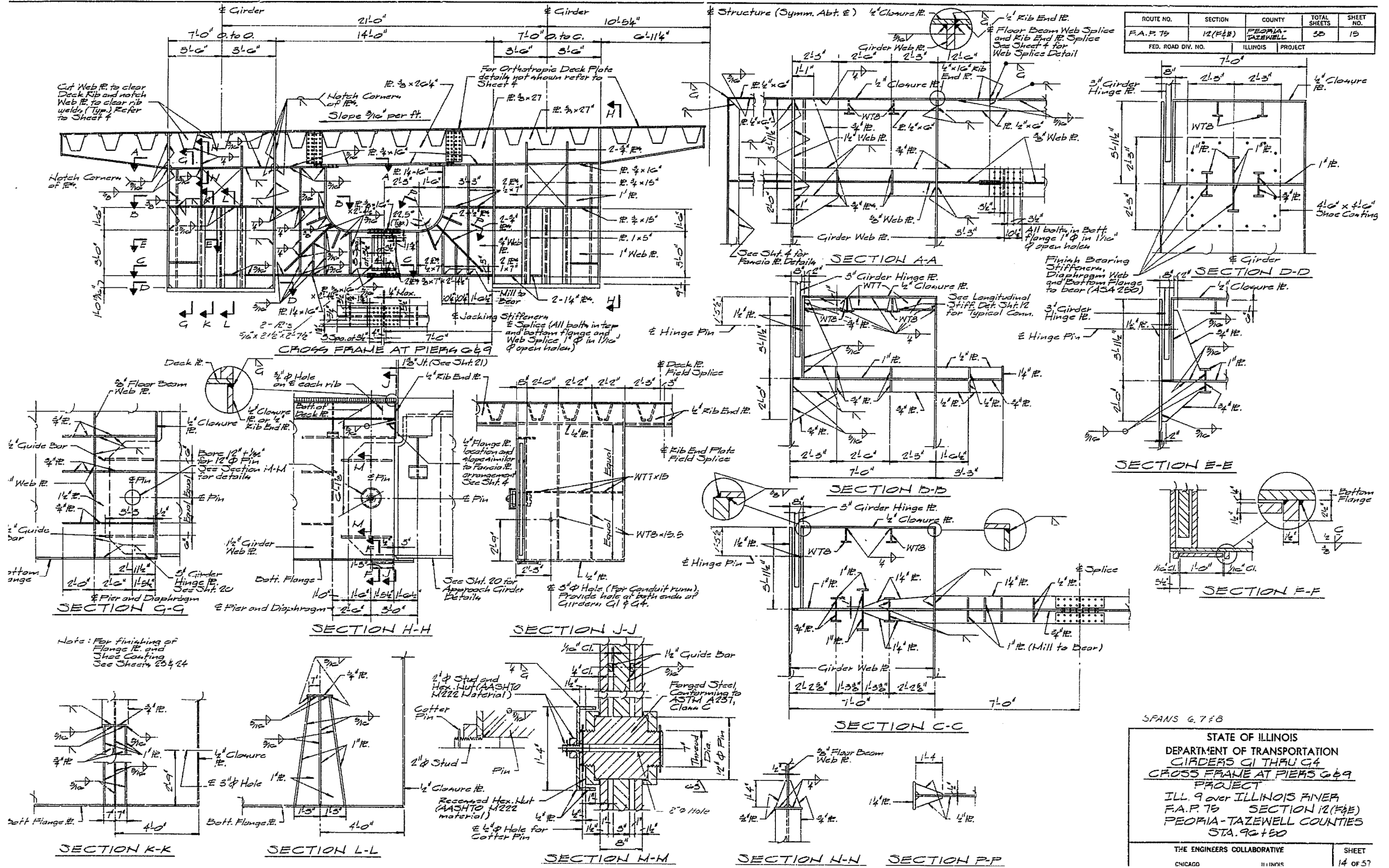


STATE OF ILLINOIS
DEPARTMENT OF TRANSPORTATION
ORTHOTROPIC DECK
PLATE SECTIONS
PROJECT
ILL. 9 over ILLINOIS RIVER
F.A.P. 75 SECTION 12(F&E)
PEORIA-TAZEWELL COUNTIES
STA. 96+50

THE ENGINEERS COLLABORATIVE SHEET

INFORMATION ONLY S.N. 090-0114

ROUTE NO.	SECTION	COUNTY	TOTAL SHEETS	SHEET NO.
F.A.P. 75	12(F&B)	PEORIA-TAZEWELL	30	15
FED. ROAD DIV. NO.	ILLINOIS	PROJECT		

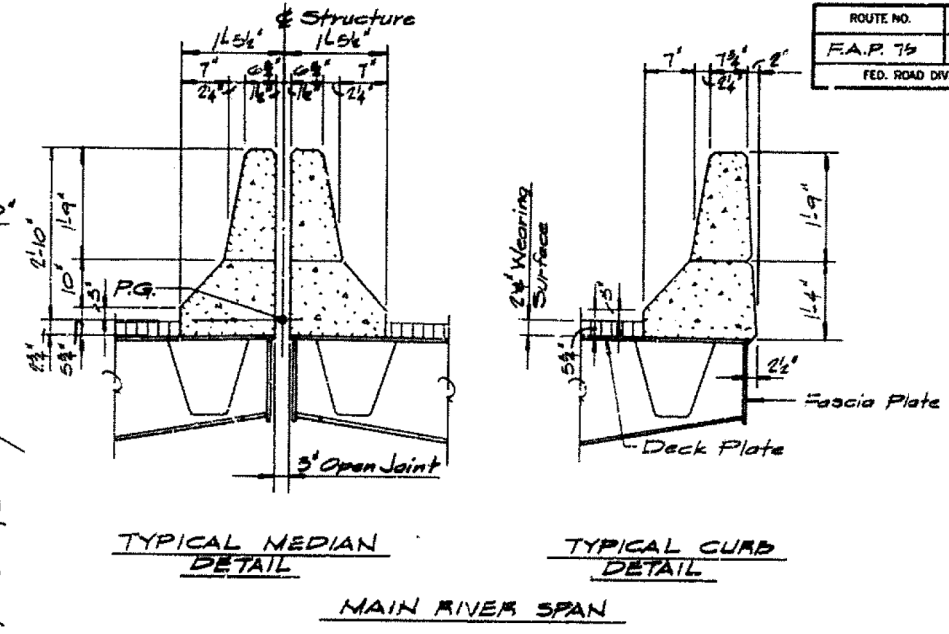
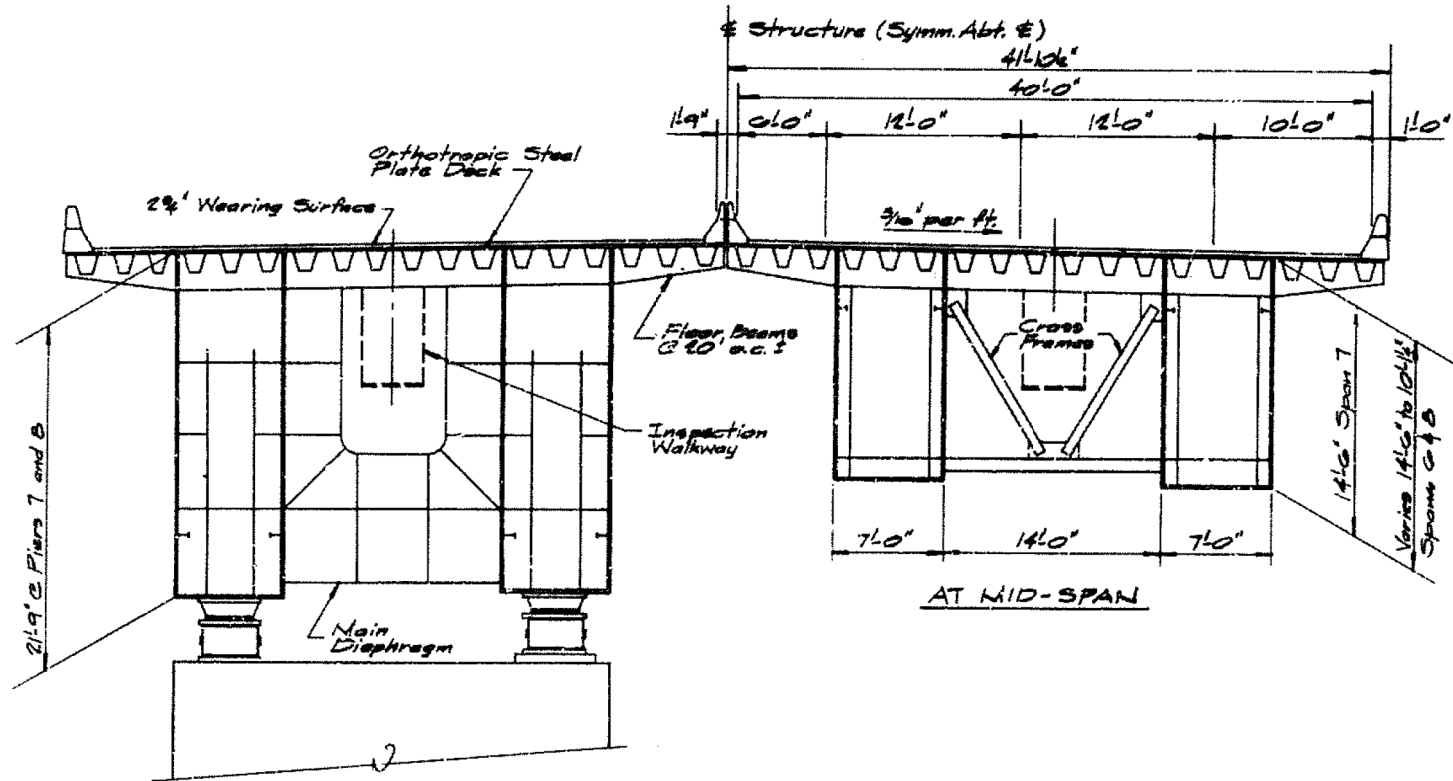


SPANS G, 7 & B

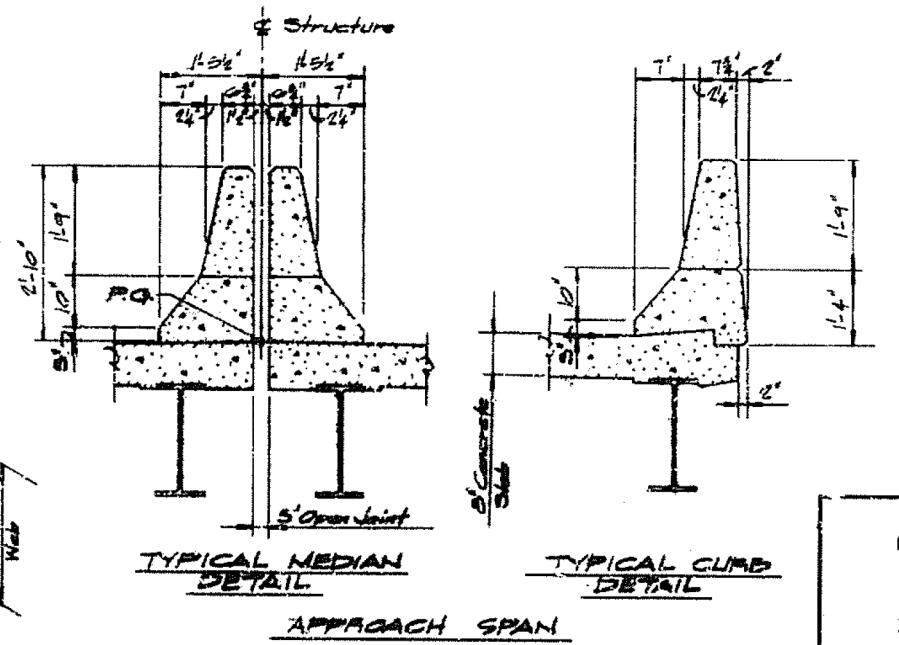
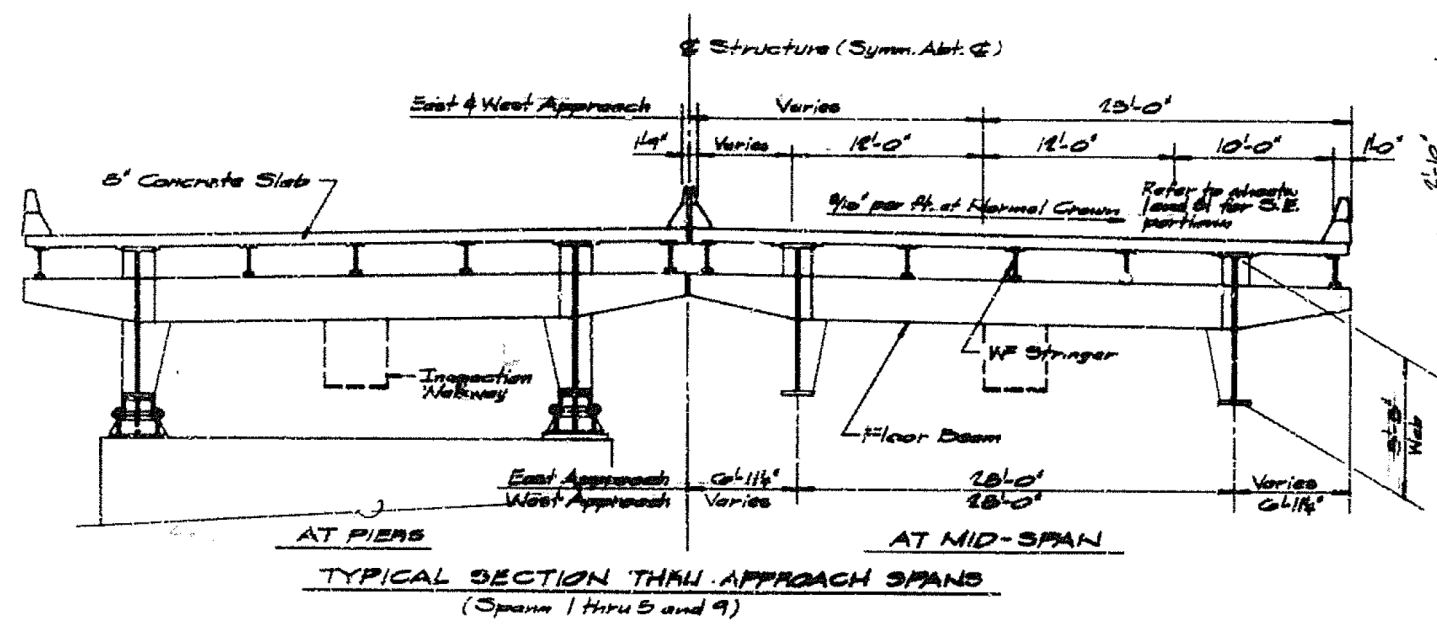
STATE OF ILLINOIS
DEPARTMENT OF TRANSPORTATION
GIRDERS G1 THRU G4
CROSS FRAME AT PIERS G&G
PROJECT
ILL. 9 over ILLINOIS RIVER
F.A.P. 75 SECTION 12(F&B)
PEORIA-TAZEWELL COUNTIES
STA. 96+50

THE ENGINEERS COLLABORATIVE CHICAGO ILLINOIS SHEET 14 OF 37

ROUTE NO.	SECTION	COUNTY	TOTAL SHEETS	SHEET NO.
F.A.P. 75	12(F+E)	PEORIA-TAZEWELL	50	3
FED. ROAD DIV. NO.	ILLINOIS	PROJECT		



AT PIERS
TYPICAL SECTION THRU MAIN RIVER SPANS
(Spans 6, 7 and 8)



AT PIERS
TYPICAL SECTION THRU APPROACH SPANS
(Spans 1 thru 5 and 9)

STATE OF ILLINOIS
DEPARTMENT OF TRANSPORTATION
SUPERSTRUCTURE DETAILS
PROJECT:
ILL. 9 over ILLINOIS RIVER
F.A.P. 75 SECTION 12(F+E)
PEORIA-TAZEWELL COUNTIES
STA. 96+50

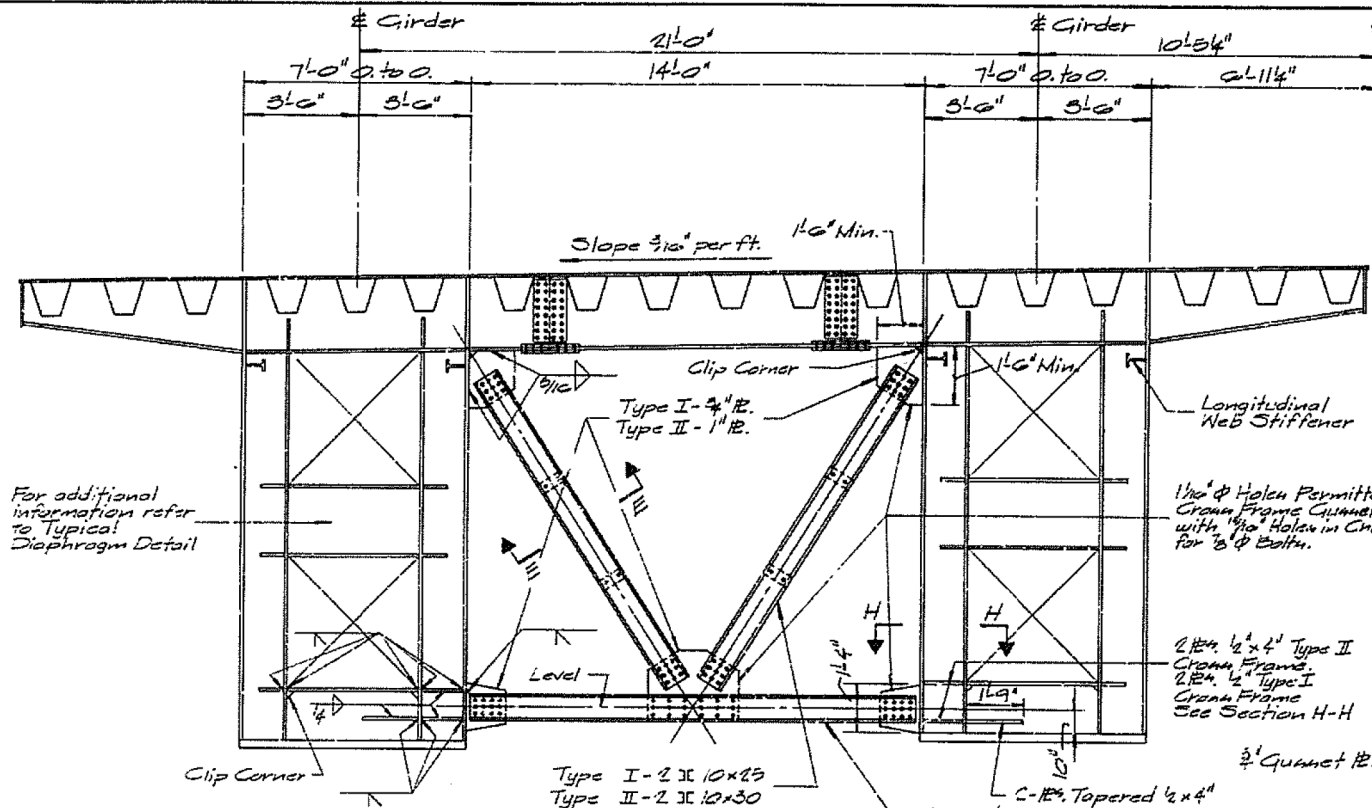
FILE NAME = 68D12 PAINTING 2017.dgn	USER NAME = keathbr	DESIGNED -	REVISED -
Default	PLOT SCALE = 100.0000' / in.	DRAWN -	REVISED -
	PLOT DATE = 10/19/2016	CHECKED -	REVISED -
		DATE -	REVISED -

STATE OF ILLINOIS
DEPARTMENT OF TRANSPORTATION

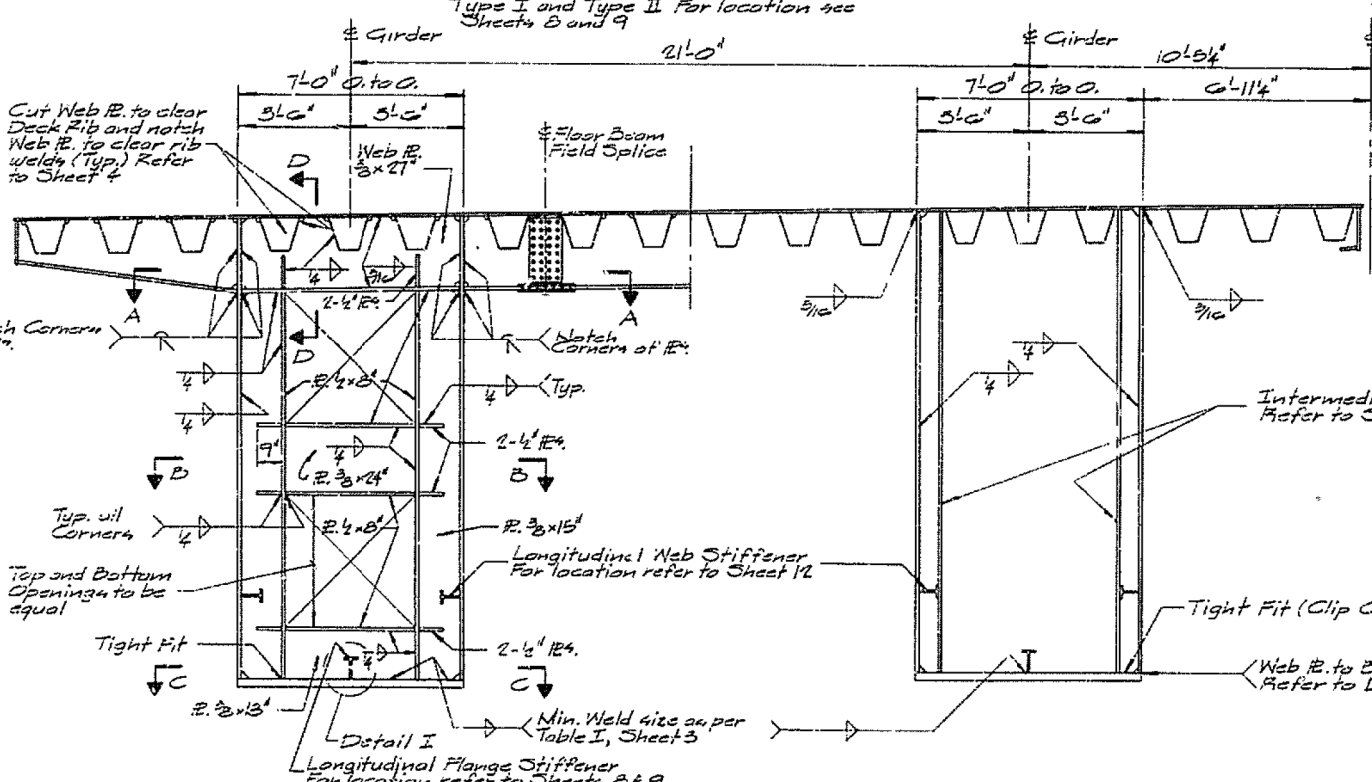
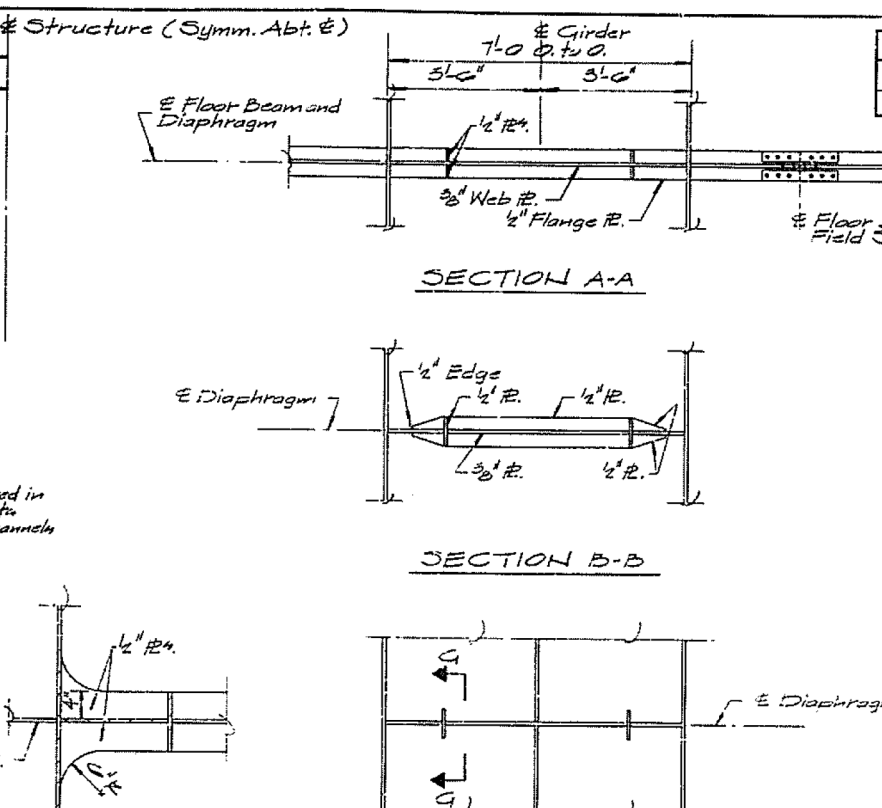
INFORMATION ONLY	
STEEL DETAILS	
SCALE:	SHEET OF SHEETS STA. TO STA.

F.A.P. RTE.	SECTION	COUNTY	TOTAL SHEETS	SHEET NO.
• IL 9 (FAP693)	(12B)BP	TAZEWELL	18	17
ILLINOIS FED. AID PROJECT			68D12	

ROUTE NO.	SECTION	COUNTY	TOTAL SHEETS	SHEET NO.
F.A.P. 75	12(F&E)	PEORIA-TAZEWELL	30	15
FED. ROAD DIV. NO.	ILLINOIS	PROJECT		



INTERMEDIATE CROSS FRAME
Type I and Type II for location see sheets 8 and 9



TYPICAL DIAPHRAGM DETAIL

TYPICAL STIFFENER DETAILS (BETWEEN DIAPHRAGMS)

* Back up bars shall be joined to the flange or web by continuous fillet welds placed outside the joint or by tack welds placed inside the joint.

Min. weld size as per Table I, Sheet 3

DETAIL F-F (Alternate)

SPANS C, 7 & 8

STATE OF ILLINOIS
DEPARTMENT OF TRANSPORTATION
GIRDERS OF THE GA
INTERMEDIATE CROSS FRAMES,
DIAPHRAGM AND STIFFENER DETAILS
PROJECT
ILL. 9 over ILLINOIS RIVER,
F.A.P. 75 SECTION 12(F&E)
PEORIA-TAZEWELL CO. LITIES
STA. 90+50 15 of 57

THE ENGINEERS COLLABORATIVE SHEET 15

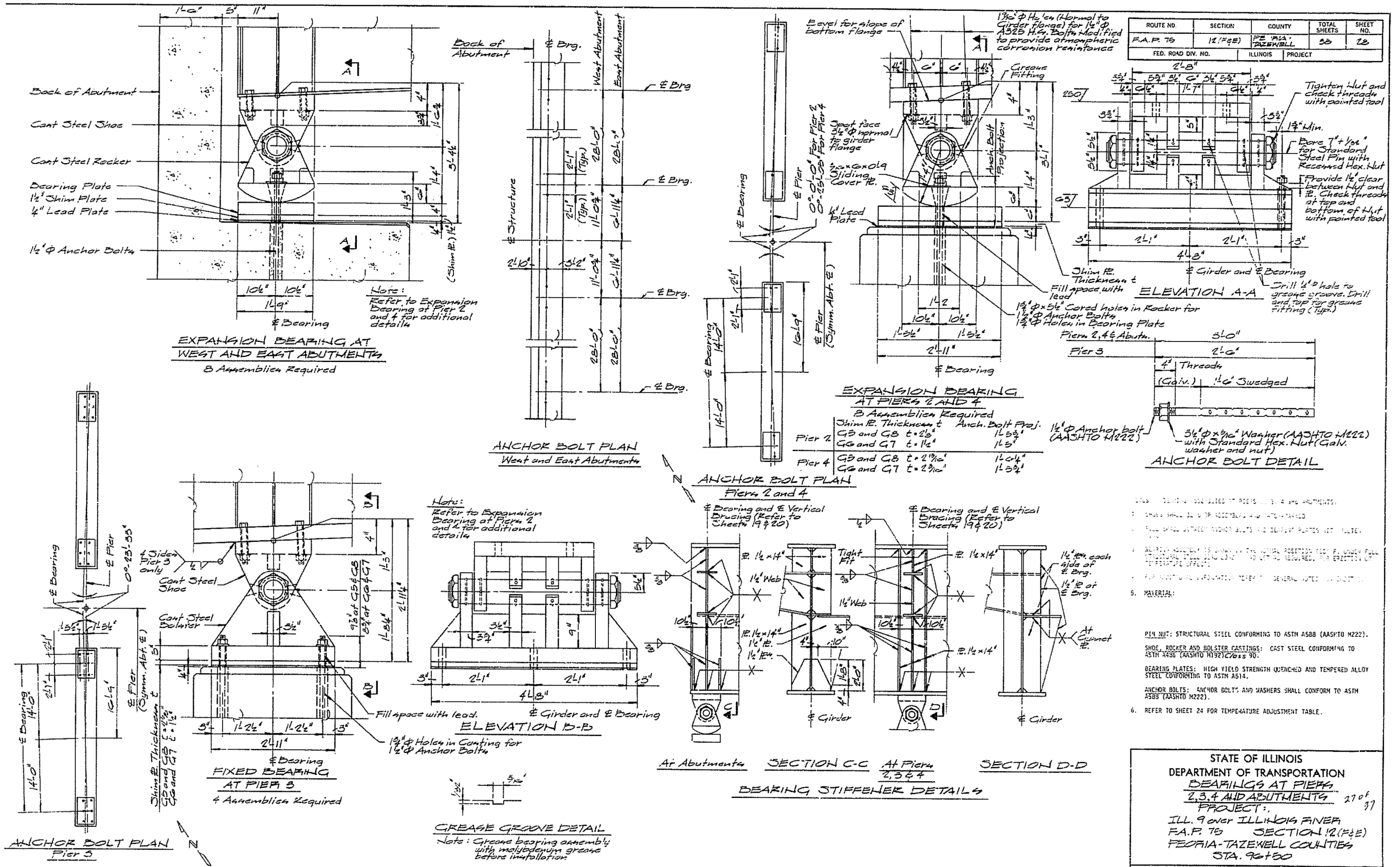
FILE NAME = 68D12 PAINTING 2017.dgn	USER NAME = keathbr	DESIGNED -	REVISED -
Default	PLOT SCALE = 100.0000' / in.	DRAWN -	REVISED -
	PLOT DATE = 10/19/2016	CHECKED -	REVISED -
		DATE -	REVISED -

STATE OF ILLINOIS
DEPARTMENT OF TRANSPORTATION

INFORMATION ONLY
STEEL DETAILS

SCALE: SHEET OF SHEETS STA. TO STA.

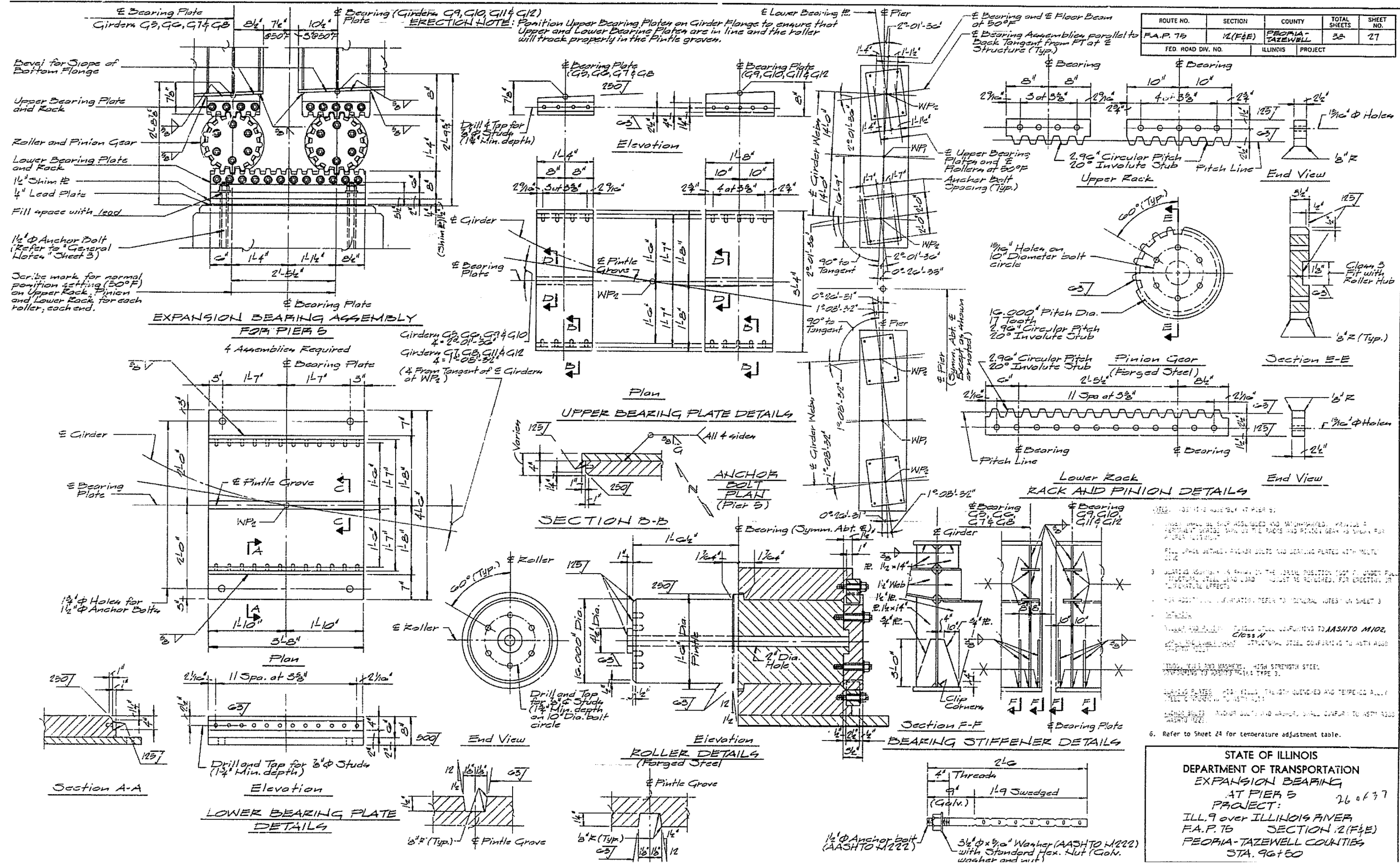
F.A. RTE.	SECTION	COUNTY	TOTAL SHEETS	SHEET NO.
• IL 9 (FAP693)	(12)BIP	TAZEWELL	24	18
ILLINOIS FED. AID PROJECT			68D12	



ROUTE NO.	SECTION	COUNTY	TOTAL SHEETS	SHEET NO.
F.A.P. 75	12 (F&E)	FE 'M&A' TAZEWELL	55	28
FED. ROAD DIV. NO.	ILLINOIS	PROJECT		

STATE OF ILLINOIS
 DEPARTMENT OF TRANSPORTATION
BEARINGS AT PIERS 2, 3, 4 AND ABUTMENTS 27 of 97
 PROJECT:
 ILL. 9 over ILLINOIS RIVER
 F.A.P. 75 SECTION 12 (F&E)
 PEORIA-TAZEWELL COUNTIES
 STA. 96+50

ROUTE NO.	SECTION	COUNTY	TOTAL SHEETS	SHEET NO.
F.A.P. 75	12(F&E)	PEORIA-TAZEWELL	38	27
FED. ROAD DIV. NO.	ILLINOIS	PROJECT		



FILE NAME: 68D12 PAINTING 2017.dgn
 USER NAME: aubreys
 PLOT SCALE: 100.0000' / in.
 PLOT DATE: 10/20/2016

DESIGNED	DRAWN	CHECKED	DATE
-	-	-	-
-	-	-	-
-	-	-	-
-	-	-	-

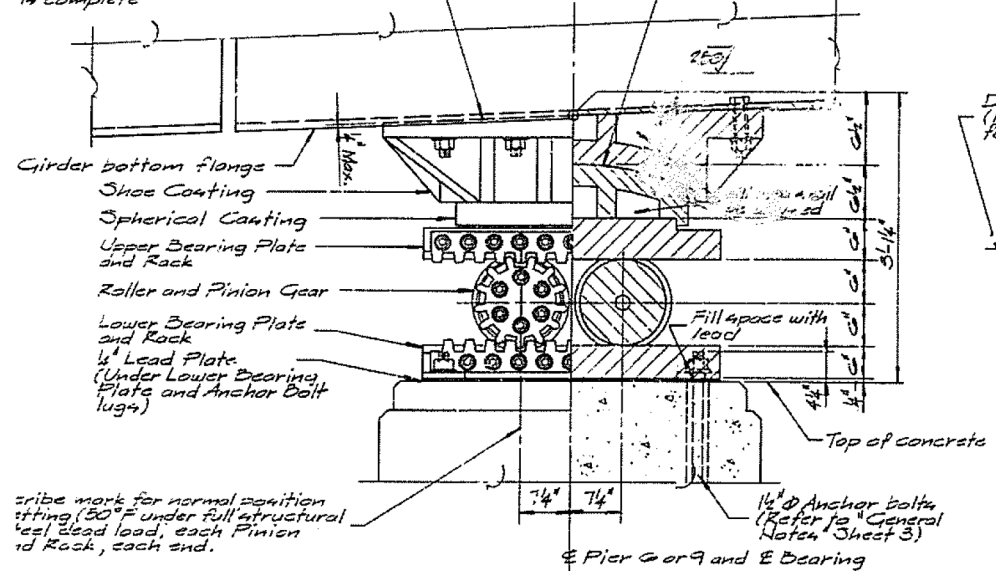
STATE OF ILLINOIS
 DEPARTMENT OF TRANSPORTATION

INFORMATION ONLY
 BEARINGS AT PIER 5
 SCALE: SHEET OF SHEETS STA. TO STA.

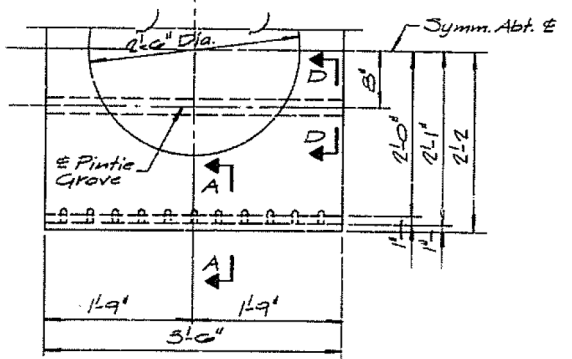
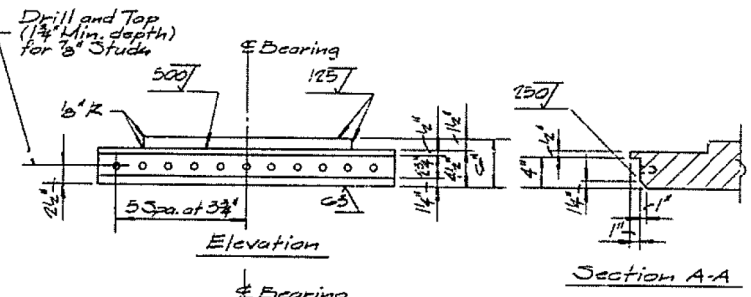
F.A.P. RTE.	SECTION	COUNTY	TOTAL SHEETS	SHEET NO.
• IL 9 (FAP693)	(12)BIP	TAZEWELL	24	20
				68D12

Finish large area (24" square) to a true plane surface after all welding of girder web to flange and diaphragm is complete

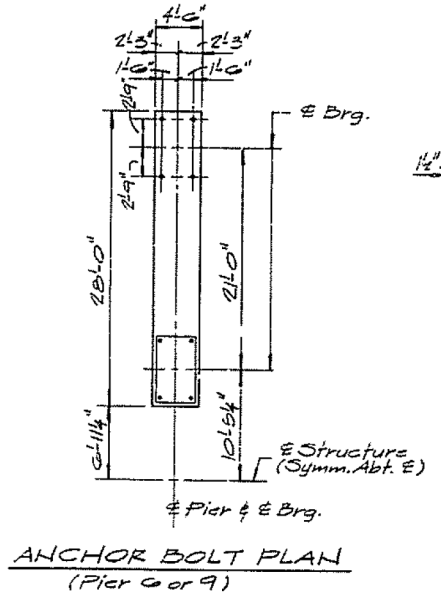
Apply solid film lubrication on shoe and spherical casting



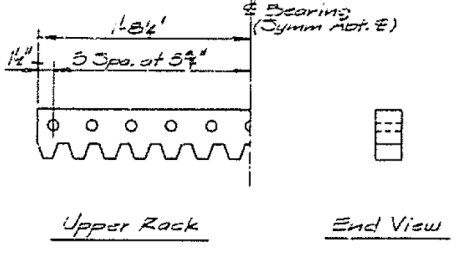
EXPANSION BEARING ASSEMBLY FOR PIERS 6 AND 9
3 Assemblies Required



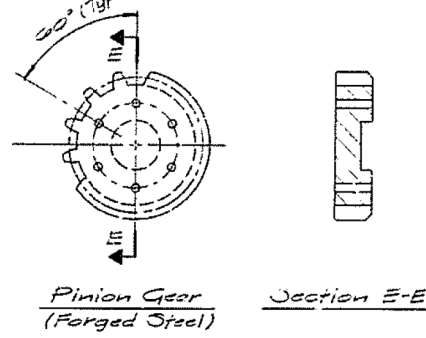
UPPER BEARING PLATE DETAILS
For SECTION D-D see Sheet 23



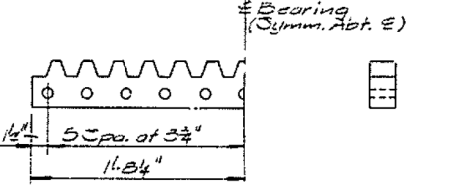
ANCHOR BOLT PLAN (Pier 6 or 9)



Upper Rack End View



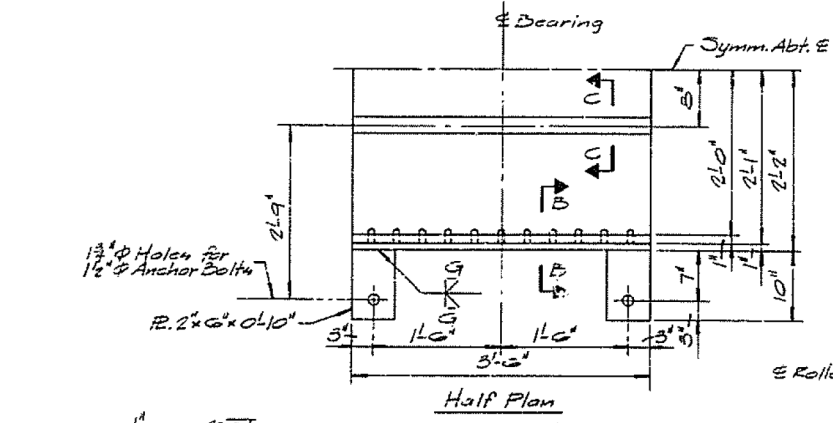
Pinion Gear (Forged Steel) Section E-E



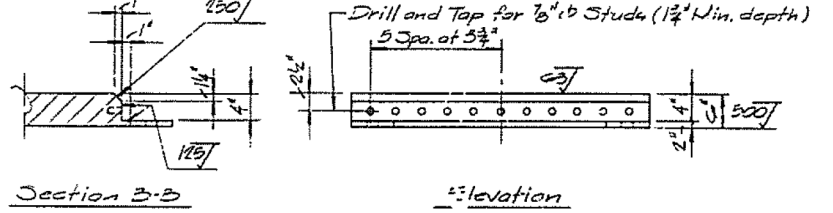
Lower Rack End View

RACK AND PINION DETAILS
For Details not shown Refer to RACK AND PINION DETAILS on Sheet 23

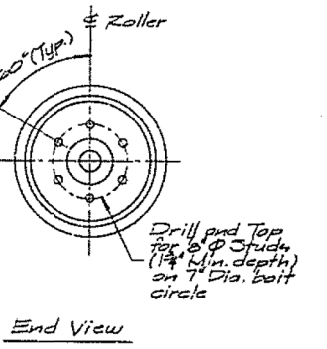
Notes:
For Shoe and Spherical Casting Details refer to Sheet 24.
For Bearing Assembly notes and Material Specifications refer to Sheet 24.
For Anchor Bolt Detail refer to Sheet 23.



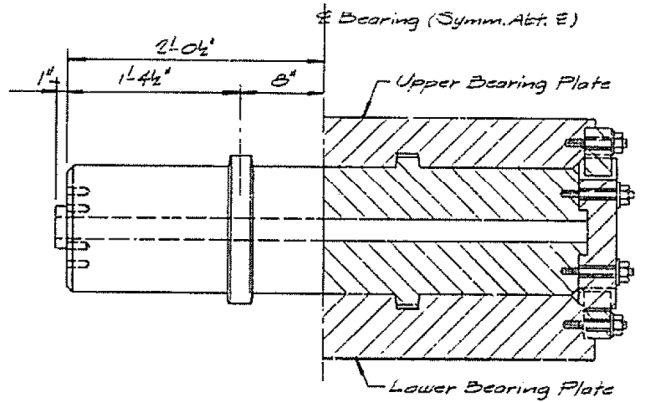
LOWER BEARING PLATE DETAILS
For SECTION C-C see Sheet 23



Section B-B



End View



Roller Details (Forged Steel)
For Details not shown Refer to Roller Detail on Sheet 23

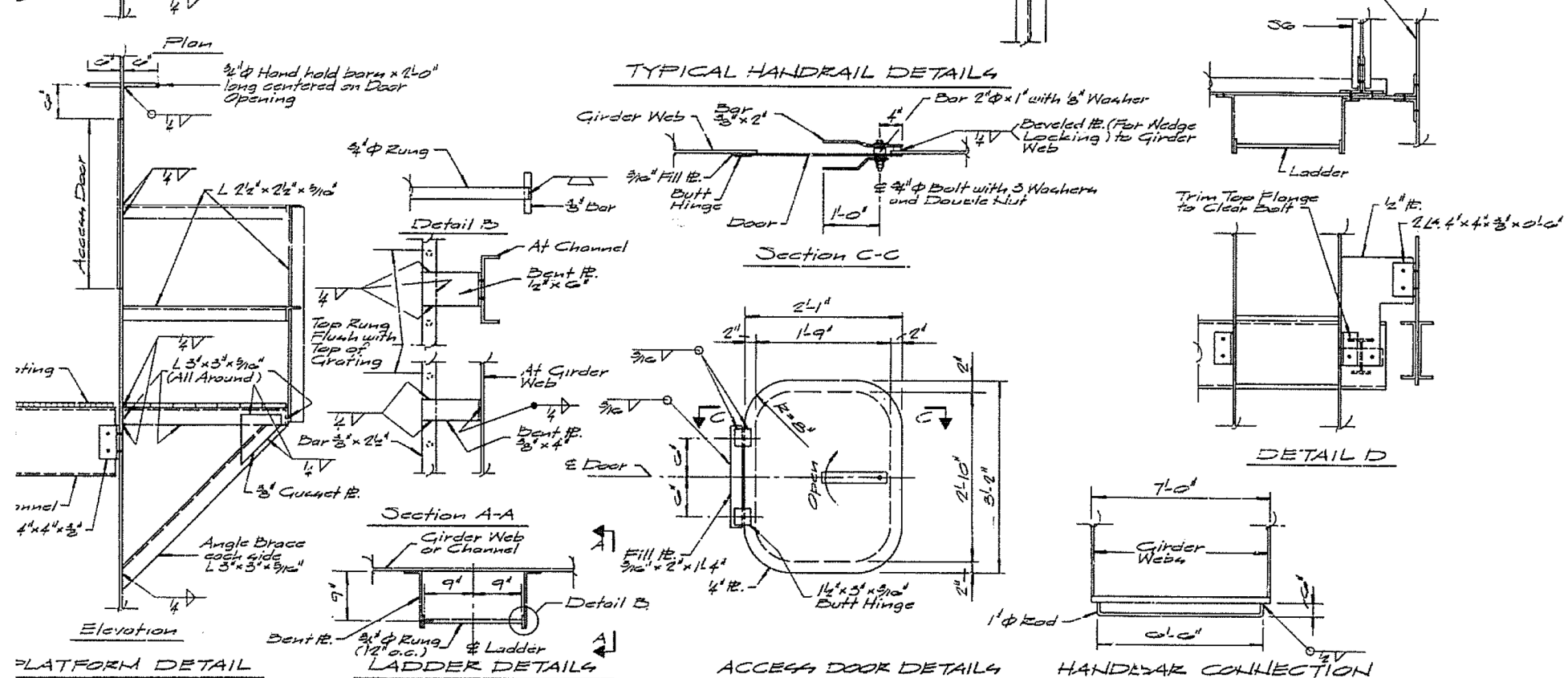
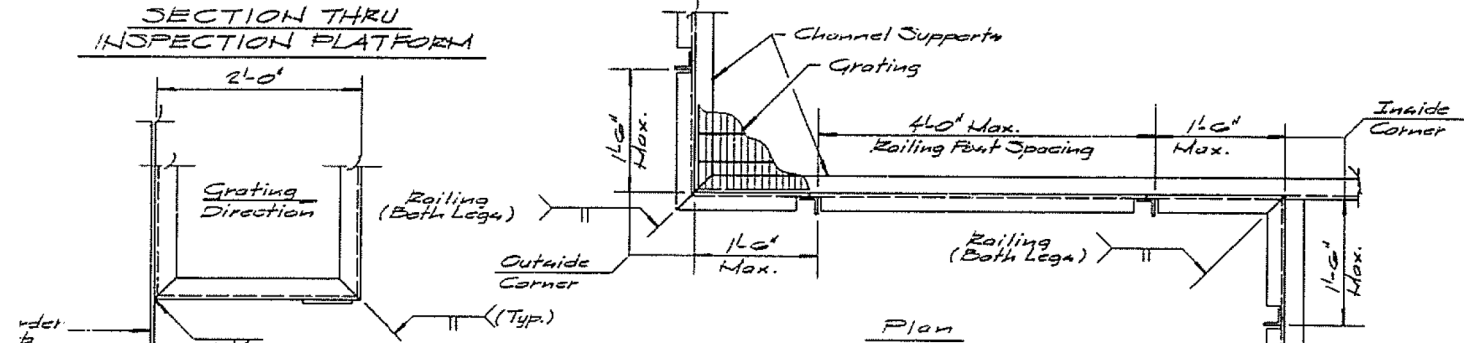
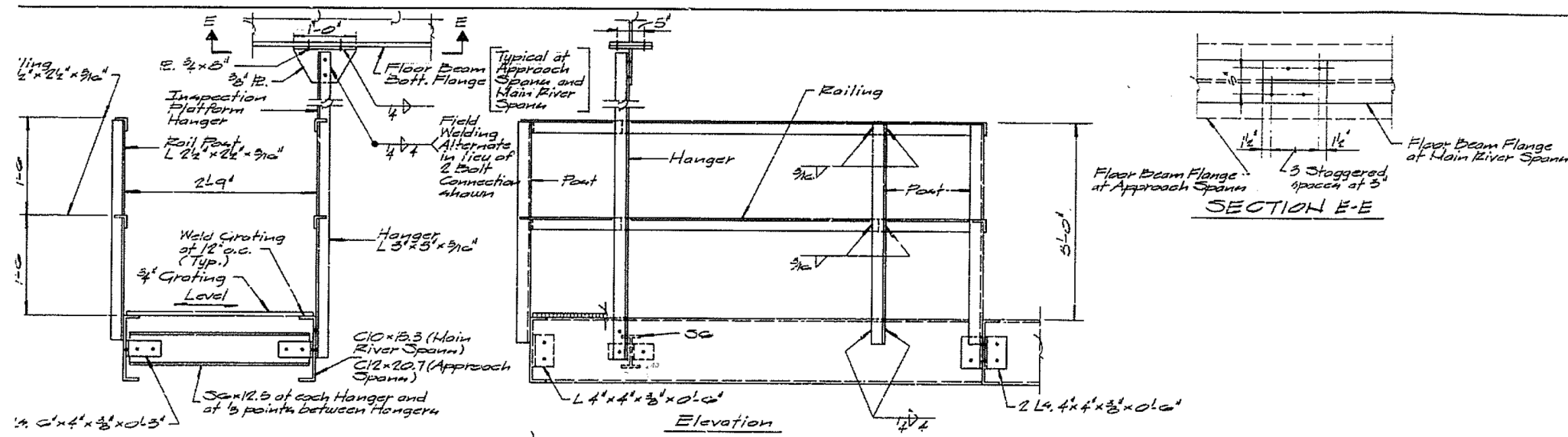
STATE OF ILLINOIS				
DEPARTMENT OF TRANSPORTATION				
EXPANSION BEARINGS				
AT PIERS 6 AND 9				
PROJECT: ILL. 9 over ILLINOIS RIVER				
F.A.P. 75 SECTION 12 (F&E)				
PEORIA-TAZEWELL COUNTIES				
STA. 96+50				
THE ENGINEERS COLLABORATIVE				SHEET

25 of 37

INFORMATION ONLY S.N. 090-0114

ROUTE NO.	SECTION	COUNTY	TOTAL SHEETS	SHEET NO.
F.A.P. 75	12(F&E)	PEORIA-TAZEWELL	25	31
FED. ROAD DIV. NO.	ILLINOIS	PROJECT		

- Notes:**
- All Material shall conform to the requirements of AASHTO M222 and shall be unpainted.
 - Grating shall be $\frac{3}{4}$ " steel grating (unpainted) and attached to supporting members by welding at 12" o.c.
 - Railing shall be along all sides of inspection platform except as noted at access locations.
 - Fillet weld sizes not shown shall conform to min. weld size on per Table I, Sheet 5.
 - Grating shall conform to the following:
 - Material: AASHTO M222 and shall be unpainted.
 - All welded construction.
 - $\frac{3}{4}$ " x $\frac{3}{16}$ " bearing bars on 1 $\frac{3}{16}$ " centers.
 - Twisted square cross bars at 4" on center.

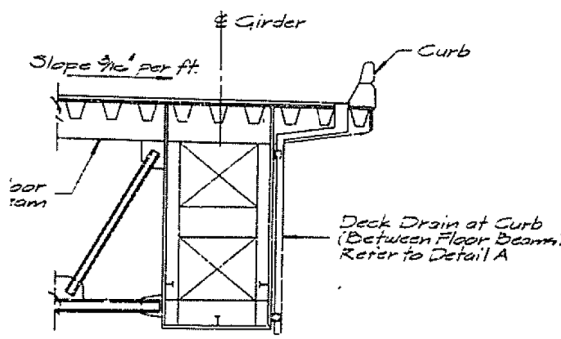


STATE OF ILLINOIS
 DEPARTMENT OF TRANSPORTATION
INSPECTION PLATFORMS
 PROJECT
 ILL. 9 over ILLINOIS PNEP
 F.A.P. 75 SECTION 12(F&E)
 PEORIA-TAZEWELL COUNTIES
 STA. 90+20 30 31

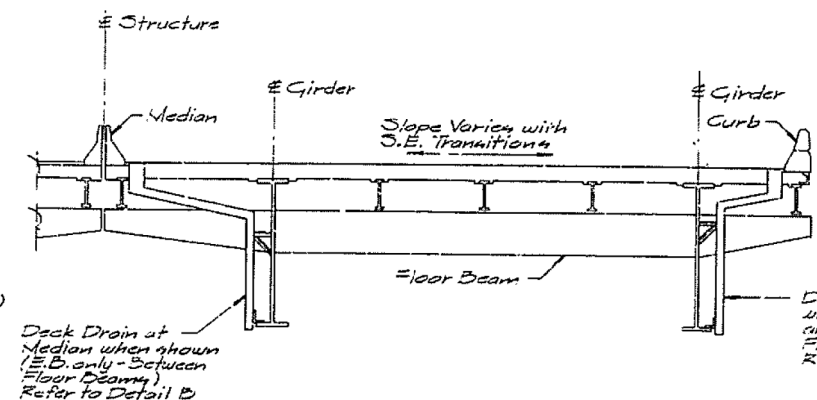
THE ENGINEERS COLLABORATIVE SHEET 31 of 37

INFORMATION ONLY S.N. 090-0114

Structure (Symm. Abt. E)



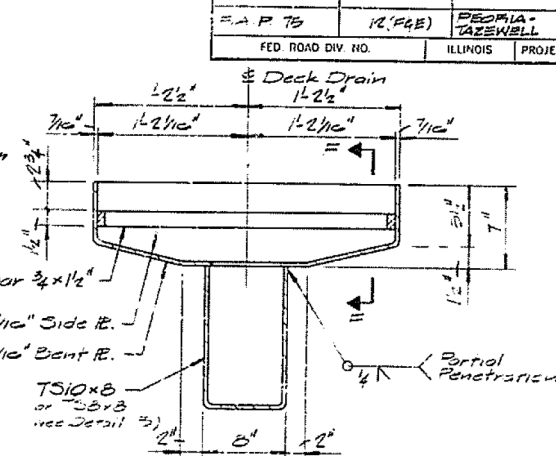
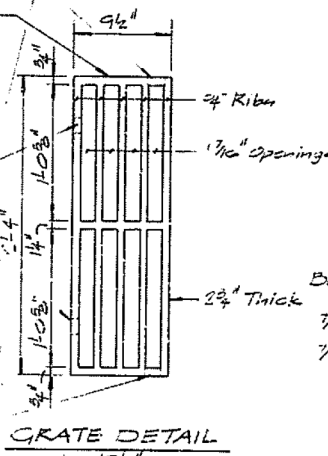
For Location of Deck Drains refer to Sheet 5



For Location of Deck Drains refer to Sheets 5, 7 and 10

Gray Iron Casting shall conform to the requirements of AASHTO M105 Class 30. The Grate shall fit and have contact with the frame so to insure the grate from jumping or rattling when struck by vehicles.

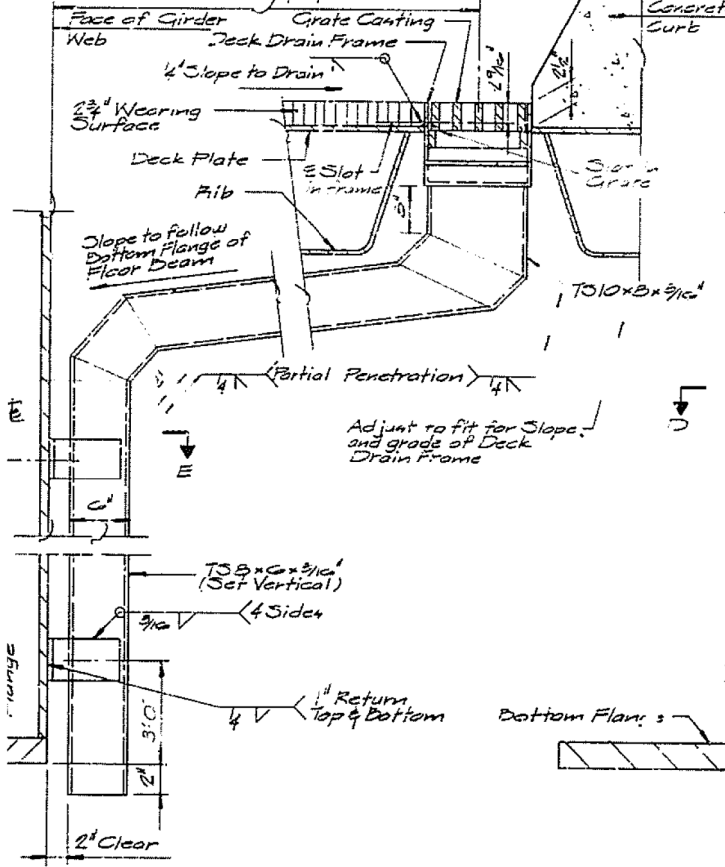
Provide 3/8" x 1/2" horizontal slots at ends of grate to match location of slots in frame See Detail G. Typical all Grates



SECTION C-C

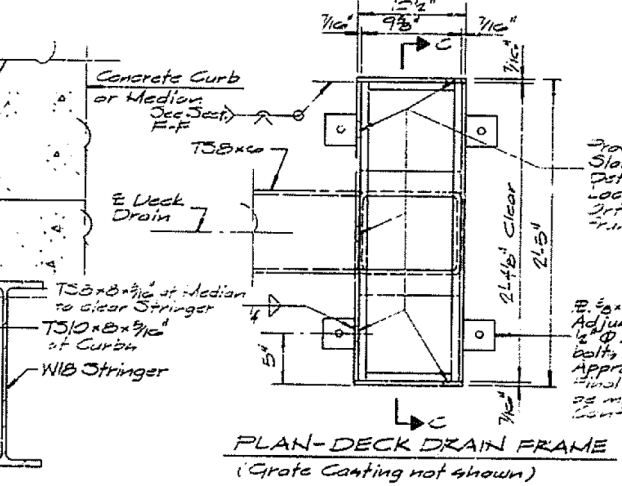
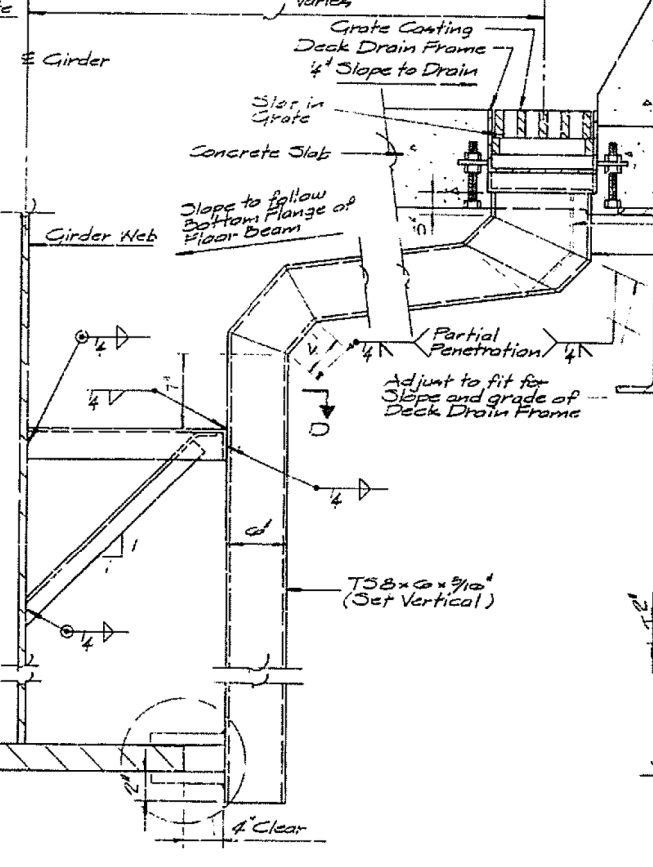
DECK DRAIN DETAILS

Orthotropic Deck - Main River Span

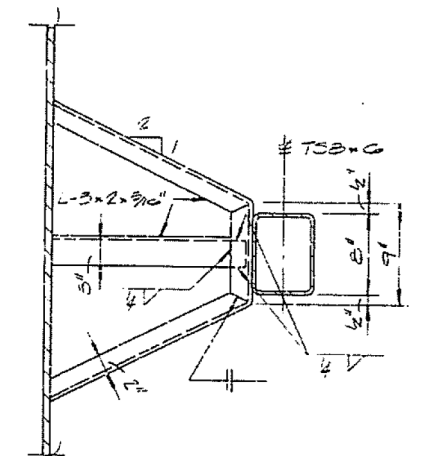


DECK DRAIN DETAILS

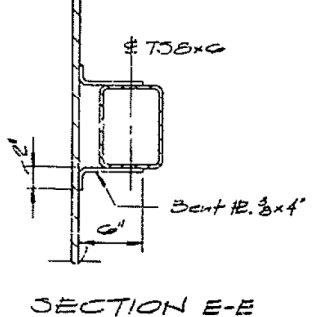
Approach Spans



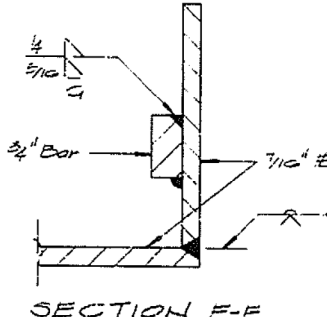
PLAN-DECK DRAIN FRAME (Grate Canting not shown)



SECTION D-D



SECTION E-E



SECTION F-F

Notes:
All Deck Drain Frames, Structural Tubing and support material shall conform to the requirements of AASHTO M122 and shall be impregnated except as noted below.
Inside surface only of Deck Drain Frames, TS10 and TS8 members shall be shop painted with two coats of a Zinc Rich Epoxy Primer.

STATE OF ILLINOIS
DEPARTMENT OF TRANSPORTATION
DRAINAGE DETAILS
PROJECT: ILL. 9 over ILLINOIS AVE
F.A.P. 75 SECTION 12(F&E)
PEORIA-TAZEWELL COUNTIES
STA. 96+50

FILE NAME = 68D12 PAINTING 2017.dgn
Default

USER NAME = aubreys
PLOT SCALE = 100.0000' / in.
PLOT DATE = 10/20/2016

DESIGNED -
DRAWN -
CHECKED -
DATE -

REVISED -
REVISED -
REVISED -
REVISED -

STATE OF ILLINOIS
DEPARTMENT OF TRANSPORTATION

INFORMATION ONLY
DRAINAGE DETAILS

SCALE: SHEET OF SHEETS STA. TO STA.

F.A.P. RTE.	SECTION	COUNTY	TOTAL SHEETS	SHEET NO.
• IL 9 (FAP693)	(12B)BP	TAZEWELL	24	24
ILLINOIS FED. AID PROJECT				68D12