

F.A.P. RTE.	SECTION	COUNTY	TOTAL SHEETS	SHEET NO.
693	D5 CM PATCHING 2017-1	MCLEAN	11	1
		ILLINOIS	CONTRACT NO. 70C35	

FOR INDEX OF SHEETS, SEE SHEET NO. 2
FOR SUMMARY OF QUANTITIES, SEE SHEET NO. 4

STATE OF ILLINOIS
DEPARTMENT OF TRANSPORTATION
DIVISION OF HIGHWAYS
**PROPOSED
HIGHWAY PLANS**

FAP ROUTE 693 (IL 9)
SECTION D5 CM PATCHING 2017-1

PATCHING
MCLEAN COUNTY

C-95-062-16

MITSUBISHI MOTORWAY TO I-55
IN BLOOMINGTON

D95-062-16

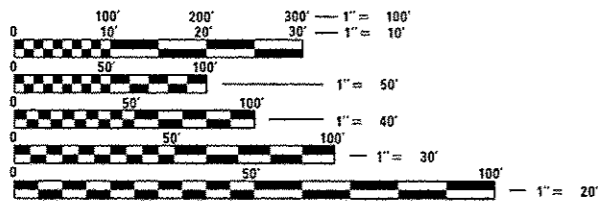


DESIGN DESIGNATION
OTHER PRINCIPLE ARTERIAL

CURRENT ADT: (2015)
7750

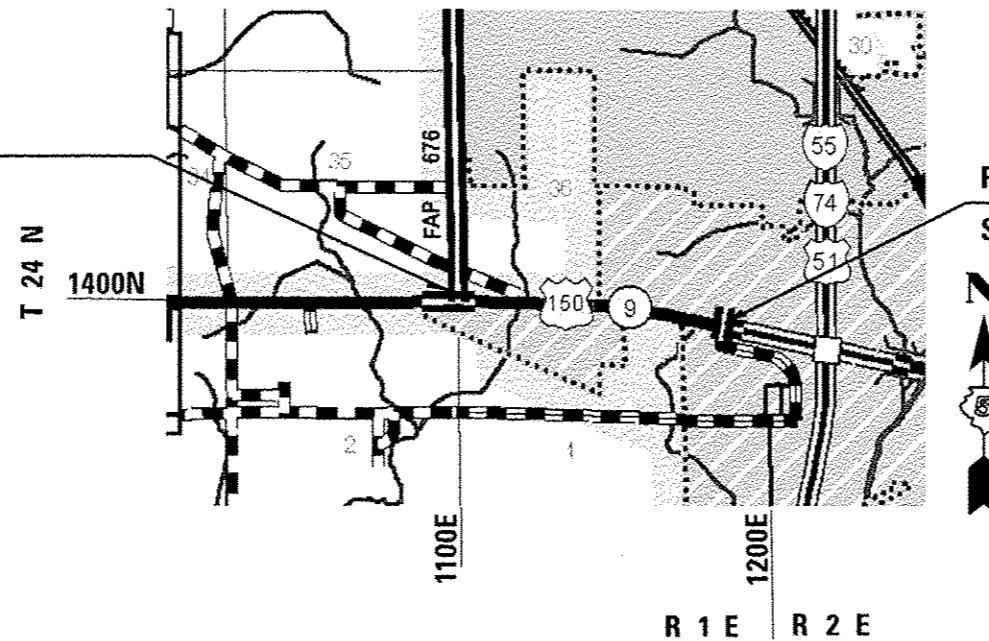
PROJECT BEGINS
STATION 855 + 25

PROJECT ENDS
STATION 936 + 09



FULL SIZE PLANS HAVE BEEN PREPARED USING STANDARD ENGINEERING SCALES. REDUCED SIZED PLANS WILL NOT CONFORM TO STANDARD SCALES. IN MAKING MEASUREMENTS ON REDUCED PLANS, THE ABOVE SCALES MAY BE USED.

J.U.L.I.E.
JOINT UTILITY LOCATION INFORMATION FOR EXCAVATION
1-800-892-0123
OR 811
DRY GROVE TOWNSHIP



GROSS LENGTH = 8,084 FT. = 1.531 MILE
NET LENGTH = 3,861 FT. = 0.731 MILE

PROJECT ENGINEER JASON STULTS 217-466-7364
PROJECT MANAGER MICHAEL LEROY 217-466-7228

STATE OF ILLINOIS
DEPARTMENT OF TRANSPORTATION
DIVISION OF HIGHWAYS
SUBMITTED 10/19 2016
[Signature] REGION ENGINEER
Dec 9 2016
Maureen M. Addis P.E. ENGINEER OF DESIGN AND ENVIRONMENT
Dec 9 2016
Chris Deman P.E. DIRECTOR OF HIGHWAYS CHIEF ENGINEER

PRINTED BY THE AUTHORITY
OF THE STATE OF ILLINOIS



INDEX OF SHEETS

SHEET NO	DESCRIPTION
1	COVER SHEET
2	INDEX OF SHEETS / HIGHWAY STANDARDS
3	GENERAL NOTES
4	SUMMARY OF QUANTITIES
5-7	EXISTING TYPICAL CROSS SECTIONS
8-10	QUANTITIES SCHEDULES
11	DETECTOR LOOPS

HIGHWAY STANDARDS

STANDARD NO.	DESCRIPTION
000001-06	STANDARD SYMBOLS, ABBREVIATIONS, AND PATTERNS
001001-02	AREAS OF REINFORCEMENT BARS
001006	DECIMAL OF AN INCH AND OF A FOOT
420001-08	PAVEMENT JOINTS
420701-03	PAVEMENT WELDED WIRE REINFORCEMENT
442101-07	CLASS B PATCHES
701601-09	URBAN LANE CLOSURE, MULTILANE, 1W OR 2W WITH NONTRAVERSABLE MEDIAN
701602-08	URBAN LANE CLOSURE, MULTILANE, 2W WITH BIDIRECTIONAL LEFT TURN LANE
701701-10	URBAN LANE CLOSURE, MULTILANE INTERSECTION
701901-06	TRAFFIC CONTROL DEVICES
886006-01	TYPICAL LAYOUTS FOR DETECTION LOOPS

FILE NAME *	USER NAME * LERDYMA	DESIGNED -	REVISED -	STATE OF ILLINOIS DEPARTMENT OF TRANSPORTATION	INDEX OF SHEETS / LIST OF HIGHWAY STANDARDS	F.A.P. RTE.	SECTION	COUNTY	TOTAL SHEETS	SHEET NO.
p:\11\84EBIDINTEG\Illinois.gov\PW\DOT\Docu...	uments\DOT Offices\District 5\Projects\057...	DRAWN Data\Design\0978C35-shi-gennote...	REVISED -			693	05 CM PATCHING 2017-1	MCLEAN	11	2
PLOT SCALE * 48.0000' / in.	CHECKED -	REVISED -	REVISED -			CONTRACT NO. 70C35				
PLOT DATE * 10/19/2016	DATE -	REVISED -	REVISED -		SCALE:	SHEET NO.	OF	SHEETS	STA.	TO STA.
ILLINOIS FED. AID PROJECT										

GENERAL NOTES

G. N. -100

ENGLISH UNITS OF MEASUREMENT SHALL GOVERN OVER AND SUPERSEDE ANY METRIC UNITS SHOWN IN THIS CONTRACT. WHERE INCLUDED, METRIC UNITS ARE FOR INFORMATION ONLY.

G. N. -100A

ELECTRONIC FILES AND/OR ELECTRONIC SURVEY INFORMATION INCLUDING CADD FILES WILL NOT BE AVAILABLE TO THE CONTRACTOR.

G. N. -440B

THE EXISTING TIE BARS BETWEEN THE EXISTING PAVEMENT AND EXISTING MEDIANS, GUTTERS AND/OR COMBINATION CURB AND GUTTERS THAT ARE FOUND SUITABLE FOR REUSE SHALL BE CLEANED, STRAIGHTENED AND INCORPORATED INTO THE NEW CONSTRUCTION. ANY EXISTING TIE BARS THAT ARE FOUND UNSUITABLE TO BE INCORPORATED INTO THE PROPOSED CONSTRUCTION DUE TO EXCESSIVE RUSTING OR DISTRESS SHALL BE REMOVED FLUSH WITH THE FACE OF THE EXISTING CONCRETE AND DISPOSED OF OUTSIDE THE LIMITS OF THE RIGHT-OF-WAY IN ACCORDANCE WITH ARTICLE 202.03 OF THE STANDARD SPECIFICATIONS.

THIS WORK WILL NOT BE PAID FOR SEPARATELY BUT SHALL BE CONSIDERED INCLUDED IN THE VARIOUS REMOVAL PAY ITEMS AND NO ADDITIONAL COMPENSATION WILL BE ALLOWED.

G. N. -442B -- PATCHING SCHEDULES

THE PATCHING SCHEDULES INCLUDED IN THE PLANS REPRESENT THE BEST INFORMATION AVAILABLE AT THE TIME OF COMPLETION OF THE PLANS FOR LETTING. VARIATIONS IN LOCATION AND SIZES OF BOTH FULL-DEPTH AND PARTIAL-DEPTH PATCHES MAY OCCUR.

G. N. • 873

EXISTING DETECTOR LOOPS IN THE AREAS OF PROPOSED SURFACE REMOVAL SHALL BE REPLACED PER THE EXISTING SIZE AND LOCATION EXCEPT AS NOTED IN THE PLANS. EXISTING DETECTOR LOOPS SHALL BE DISCONNECTED AT THE GULFBOX JUNCTION OR HANDHOLD PRIOR TO PAVEMENT REMOVAL AT THAT RESPECTIVE LOCATION. NEW DETECTOR LOOPS SHALL BE CONNECTED TO THE RESPECTIVE EXISTING AMPLIFIER VIA THE CORRESPONDING EXITING LEAD-IN CABLE.

G. N. -1004.01

COARSE AGGREGATE GRADATION CA-10 MAY BE USED WHENEVER COARSE AGGREGATE CA-6 IS SPECIFIED IN THE STANDARD SPECIFICATIONS.

NO COMMITMENTS

FILE NAME *	USER NAME * LEROYMA	DESIGNED -	REVISED -	STATE OF ILLINOIS DEPARTMENT OF TRANSPORTATION	GENERAL NOTES	F.A.P. RTE.	SECTION	COUNTY	TOTAL SHEETS	SHEET NO.	
p:\11\84E8\INTEG\Illinois.gov\PI\1001\Documents\1001 Offices\District 5\Projects\057	DRAWING DATA\Design\0578C35-shr-gennote.dwg	CHECKED -	REVISED -			693	05 CM PATCHING 2017-1	MCLEAN	11	3	
PLOT SCALE * 40.0000 "/td> <td style="font-size: x-small;">DATE -</td> <td style="font-size: x-small;">REVISED -</td> <td style="font-size: x-small;">REVISED -</td> <td colspan="6" style="font-size: x-small;">CONTRACT NO. 70C35</td>	DATE -	REVISED -	REVISED -			CONTRACT NO. 70C35					
PLOT DATE * 10/19/2016	DATE -	REVISED -	REVISED -			ILLINOIS FED. AID PROJECT					
				SCALE:		SHEET NO. OF SHEETS STA. TO STA.					

8/18/16 TOP

SUMMARY OF QUANTITIES

LOCATION:

FAP 693 (IL 9)
 MCLEAN CTY
 STA. 855+25
 TO
 STA. 936+09
 URBAN
 MULTI LANE

CONSTRUCTION CODE:

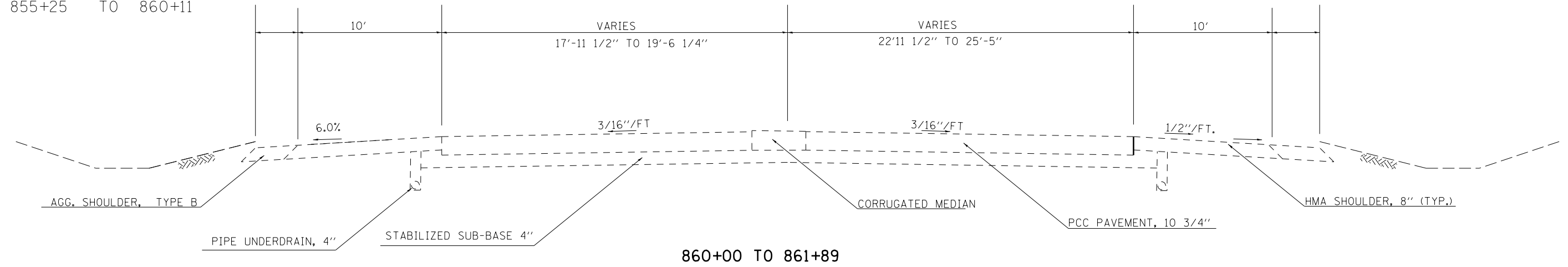
100% STATE
 0005

PAY ITEM CODE	PAY ITEM	UNIT	QTY
44200050	WELDED WIRE REINFORCEMENT	SO YD	54.0
44200982	CLASS B PATCHES, TYPE II, 11 INCH	SOYD	1,010.0
44200988	CLASS B PATCHES, TYPE IV, 11 INCH	SOYD	54.0
44201299	DOWEL BARS 1 1/2"	EACH	2,520.0
44213200	SAW CUTS	FOOT	6,879.0
44213204	TIE BARS 3/4"	EACH	40.0
60255500	MANHOLES TO BE ADJUSTED	EACH	1.0
67100100	MOBILIZATION	LSUM	1.0
70102630	TRAFFIC CONTROL AND PROTECTION, STANDARD 701601	LSUM	1.0
70102632	TRAFFIC CONTROL AND PROTECTION, STANDARD 701602	LSUM	1.0
70102635	TRAFFIC CONTROL AND PROTECTION, STANDARD 701701	LSUM	1.0
70103815	TRAFFIC CONTROL SURVEILLANCE	CAL DA	11.0
88600100	DETECTOR LOOP, TYPE I	FT	275.0

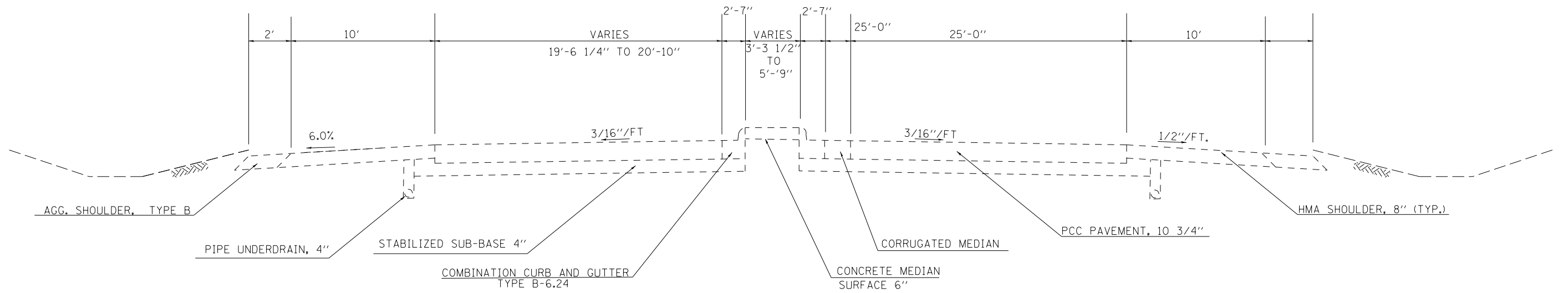
13 • SPECIALTY ITEMS

FILE NAME *	USER NAME * LEROYMA	DESIGNED -	REVISED -	STATE OF ILLINOIS DEPARTMENT OF TRANSPORTATION	SUMMARY OF QUANTITIES	F.A.P. RTE.	SECTION	COUNTY	TOTAL SHEETS	SHEET NO.	
pr\\IL084E8IDINTEC\illinois.gov\PIWIDT\Documents\1007-Ofices\District 5\Projects\057	DRAWN Data\Design\0570C35-shr-500.dgn	CHECKED -	REVISED -			693	05 CM PATCHING 2017-1	MCLEAN	11	4	
PLOT SCALE * 48.0000' / in.	CHECKED -	REVISED -	SCALE:			SHEET NO. 1 OF 1 SHEETS	STA.	TO STA.	CONTRACT NO. 70C35		
PLOT DATE * 10/19/2016	DATE -	REVISED -	ILLINOIS FED. AID PROJECT								

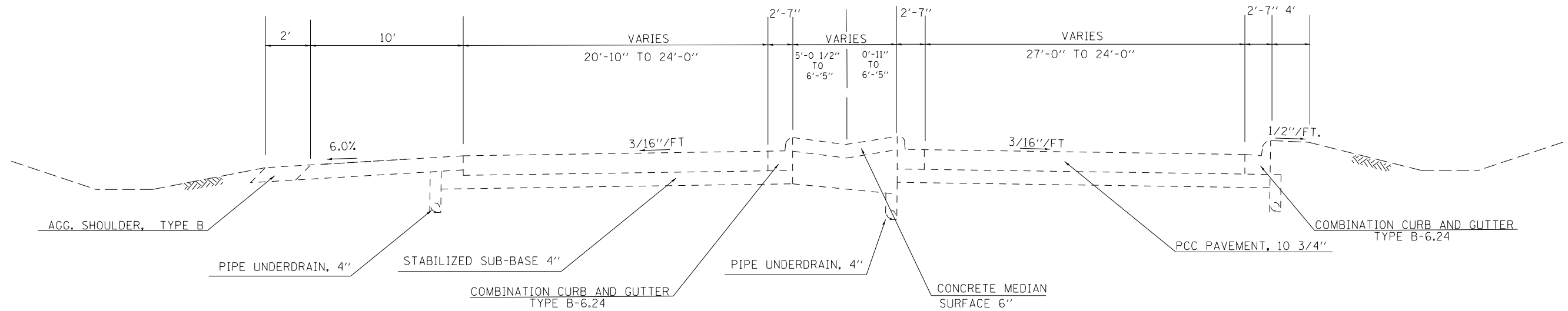
OMISSION
855+25 TO 860+11



860+00 TO 861+89

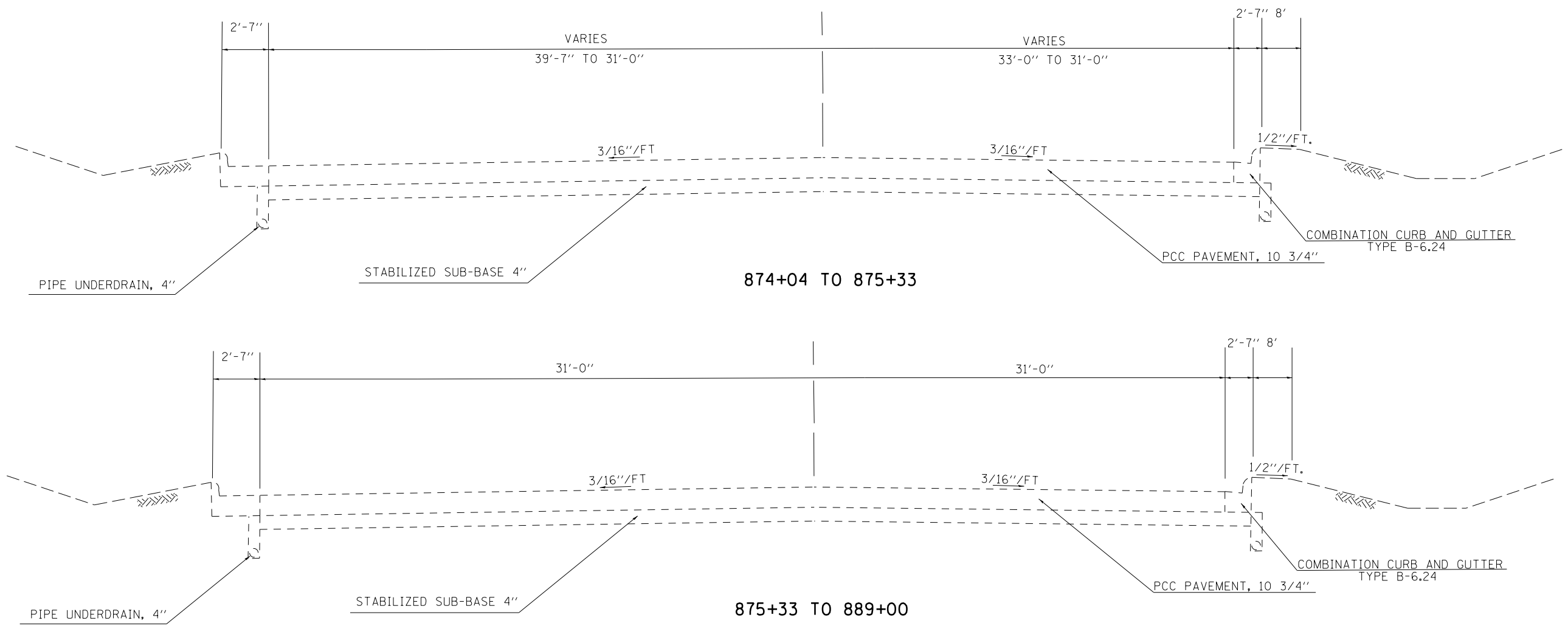


861+89 TO 862+35



862+35 TO 864+77

FILE NAME =	USER NAME = LEROYMA	DESIGNED -	REVISED -	STATE OF ILLINOIS DEPARTMENT OF TRANSPORTATION	EXISTING TYPICAL SECTION			F.A. RTE.	SECTION	COUNTY	TOTAL SHEETS	SHEET NO.
p:\11084EBID\INTEG.illinois.gov\PI\DOT\Documents\DOT Offices\District 5\Projects\0570\CDRAWING\0570\0570-35-shr-Typical.dwg		REVISION	REVISION		SCALE:	SHEET NO. 1 OF 3 SHEETS	STA.	TO STA.	D5 CM PATCHING 2017-1	MCLEAN	11	5
PLOT SCALE = 40.0000' / in.	CHECKED -	REVISION	REVISION		CONTRACT NO. 70C35							
PLOT DATE = 10/19/2016	DATE -	REVISION	REVISION		ILLINOIS FED. AID PROJECT							



OMISSION
889+00 TO 936+09

FILE NAME =	USER NAME = LEROYMA	DESIGNED -	REVISED -	STATE OF ILLINOIS DEPARTMENT OF TRANSPORTATION	EXISTING TYPICAL SECTION			F.A. RTÉ.	SECTION	COUNTY	TOTAL SHEETS	SHEET NO.
p:\11\084EBIDINTEG.illinois.gov\PIWIDOT\Documents\DOT Offices\District 5\Projects\0570\Drawings\Design\0570C35-shr-Typical.dwg		DRAWN -	REVISED -		SCALE:	SHEET NO. 3 OF 3 SHEETS	STA.	TO STA.	D5 CM PATCHING 2017-1	MCLEAN	11	7
		CHECKED -	REVISED -		CONTRACT NO. 70C35							
		DATE -	REVISED -		ILLINOIS FED. AID PROJECT							

CLASS "B" PATCHING

STATION	DIRECTION	LANE	LENGTH (ft)	WIDTH (ft)	TYPE II	TYPE IV	DOWEL	SAW CUTS	TIE BARS	WELDED
					11" (SQ YD)	11" (SQ YD)	BARS (EACH)	(FT)	3/4" (EACH)	WIRE REINFORCEMENT (SQ YD)
					44200982	44200988	44201299	44213200	44213204	44200050
860+11.00	EB	DL	6	12	8		20	54	0	0
860+11.00	EB	PL	6	12	8		20	54	0	0
860+40.00	EB	DL	6	12	8		20	54	0	0
860+40.00	EB	PL	6	12	8		20	54	0	0
860+56.00	EB	DL	6	12	8		20	54	0	0
860+80.00	EB	DL	6	12	8		20	54	0	0
860+80.00	EB	PL	6	12	8		20	54	0	0
861+60.00	EB	DL	6	12	8		20	54	0	0
861+60.00	EB	PL	6	12	8		20	54	0	0
862+55.00	EB	DL	6	12	8		20	54	0	0
863+97.00	EB	DL	6	12	8		20	54	0	0
864+40.00	EB	DL	6	12	8		20	54	0	0
864+75.00	EB	DL	6	12	8		20	54	0	0
865+05.00	EB	DL	6	12	8		20	54	0	0
865+16.00	EB	DL	6	12	8		20	54	0	0
866+00.00	EB	LTL	6	12	8		20	54	0	0
866+32.00	EB	DL	6	12	8		20	54	0	0
866+72.00	EB	DL	6	12	8		20	54	0	0
866+72.00	EB	LTL	6	12	8		20	54	0	0
867+15.00	EB	DL	6	12	8		20	54	0	0
867+15.00	EB	PL	6	12	8		20	54	0	0
867+15.00	EB	LTL	6	12	8		20	54	0	0
867+30.00	EB	LTL	6	12	8		20	54	0	0
867+90.00	EB	DL	6	12	8		20	54	0	0
867+90.00	EB	LTL	6	12	8		20	54	0	0
868+10.00	EB	DL	10	12	13		20	66	0	0
868+10.00	EB	PL	6	12	8		20	54	0	0
868+30.00	EB	DL	6	12	8		20	54	0	0
868+30.00	EB	LTL	6	12	8		20	54	0	0
868+70.00	EB	DL	6	12	8		20	54	0	0
868+70.00	EB	LTL	6	12	8		20	54	0	0
869+05.00	EB	LTL	6	12	8		20	54	0	0
869+90.00	EB	DL	6	12	8		20	54	0	0
869+90.00	EB	PL	6	12	8		20	54	0	0
869+90.00	EB	LTL	6	18	12		32	72	0	0
870+90.00	EB	DL	6	12	8		20	54	0	0
870+90.00	EB	PL	6	12	8		20	54	0	0
871+35.00	EB	DL	6	12	8		20	54	0	0
871+35.00	EB	PL	6	12	8		20	54	0	0
871+94.00	EB	DL	6	12	8		20	54	0	0
872+15.00	EB	DL	6	12	8		20	54	0	0
873+00.00	EB	DL	6	12	8		20	54	0	0
873+00.00	EB	PL	6	12	8		20	54	0	0
876+60.00	EB	DL	6	12	8		20	54	0	0
883+55.00	EB	DL	6	12	8		20	54	0	0
884+95.00	EB	DL	6	12	8		20	54	0	0
887+54.00	EB	DL	6	12	8		20	54	0	0
887+54.00	EB	PL	6	12	8		20	54	0	0
889+00.00	EB	DL	6	12	8		20	54	0	0
889+00.00	EB	LTL	6	12	8		20	54	0	0
860+11.00	WB	DL	6	15	10		26	63	0	0
860+40.00	WB	DL	6	15	10		26	63	0	0

CLASS "B" PATCHING (CONT)

STATION	DIRECTION	LANE	LENGTH (ft)	WIDTH (ft)	TYPE II 11" (SQ YD)	TYPE IV 11" (SQ YD)	DOWEL BARS (EACH)	SAW CUTS (FT)	TIE BARS 3/4" (EACH)	WELDED WIRE REINFORCEMENT (SQ YD)
					44200982	44200988	44201299	44213200	44213204	44200050
874+50.00	WB	PL	6	12	8		20	54	0	0
875+75.00	WB	PL	6	12	8		20	54	0	0
877+00.00	WB	PL	6	12	8		20	54	0	0
877+75.00	WB	DL	6	12	8		20	54	0	0
877+75.00	WB	PL	6	12	8		20	54	0	0
878+81.00	WB	DL	6	12	8		20	54	0	0
878+81.00	WB	PL	6	12	8		20	54	0	0
879+28.00	WB	DL	6	12	8		20	54	0	0
879+55.00	WB	DL	6	12	8		20	54	0	0
879+55.00	WB	PL	6	12	8		20	54	0	0
884+17.00	WB	DL	40	12	0	54	30	156	40	54.0
885+60.00	WB	DL	6	12	8		20	54	0	0
886+43.00	WB	DL	6	12	8		20	54	0	0
886+43.00	WB	PL	6	12	8		20	54	0	0
889+00.00	WB	DL	10	12	13		20	66	0	0
889+00.00	WB	PL	6	12	8		20	54	0	0
TOTAL			790	1503	1010	54	2520	6879	40	54.0

DETECTOR LOOP, TYPE 1
88600100

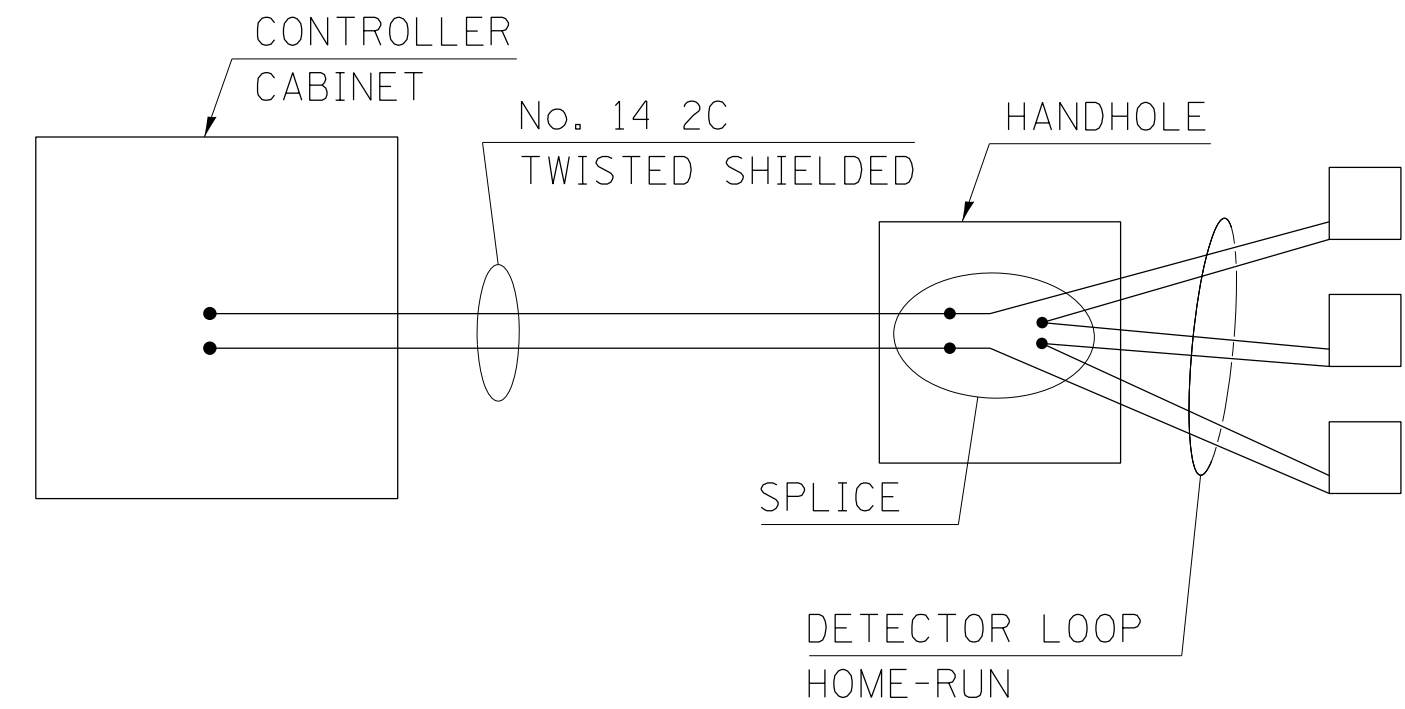
STATION	DIRECTION	LANE	LENGTH (FT)
868+70.00	EB	DL	64
868+70.00	EB	LTL	124
869+05.00	EB	LTL	87
TOTAL			275

MANHOLES TO BE ADJUSTED
60255500

STATION	DIRECTION	LANE	EACH
884+17.00	WB	DL	1
TOTAL			1

DETAIL OF DETECTOR LOOP WIRING

WIRED IN SERIES WITH SINGLE PAIR CABLE



FILE NAME =	USER NAME = LEROYMA	DESIGNED -	REVISED -	STATE OF ILLINOIS DEPARTMENT OF TRANSPORTATION		F.A.P. RTE.	SECTION	COUNTY	TOTAL SHEETS	SHEET NO.
p:\11\084EBIDINTEG.illinois.gov\PIWIDOT\Documents\DOT Offices\District 5\Projects\0570\Drawings\Design\wiring_detail.dgn						693	D5 CM PATCHING 2017-1	MCLEAN	11	11
\$MODELNAME\$	PLOT SCALE = 100.0000' / 1in.	CHECKED -	REVISED -			CONTRACT NO. 70C35				
	PLOT DATE = 10/19/2016	DATE -	REVISED -		SCALE:	SHEET	OF	SHEETS	STA.	TO
ILLINOIS FED. AID PROJECT										