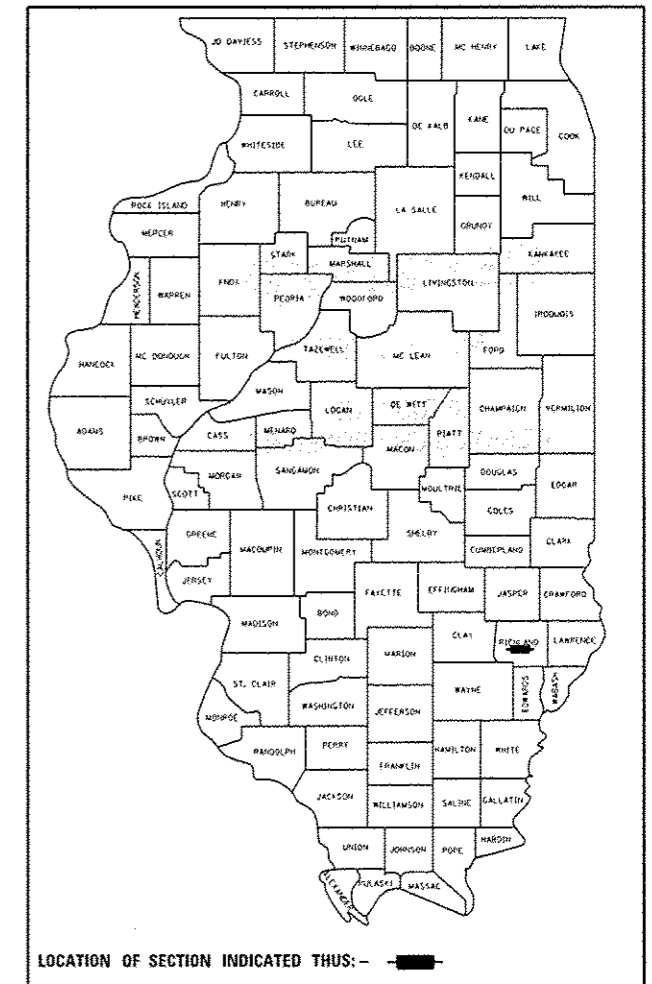


STATE OF ILLINOIS  
DEPARTMENT OF TRANSPORTATION

F.A.P. RTE.	SECTION	COUNTY	TOTAL SHEETS	SHEET NO.
• 327 & 116	D7 HMA RESURF 2017-2	RICHLAND ILLINOIS	14	1
CONTRACT NO. 74772				

D-97-036-16

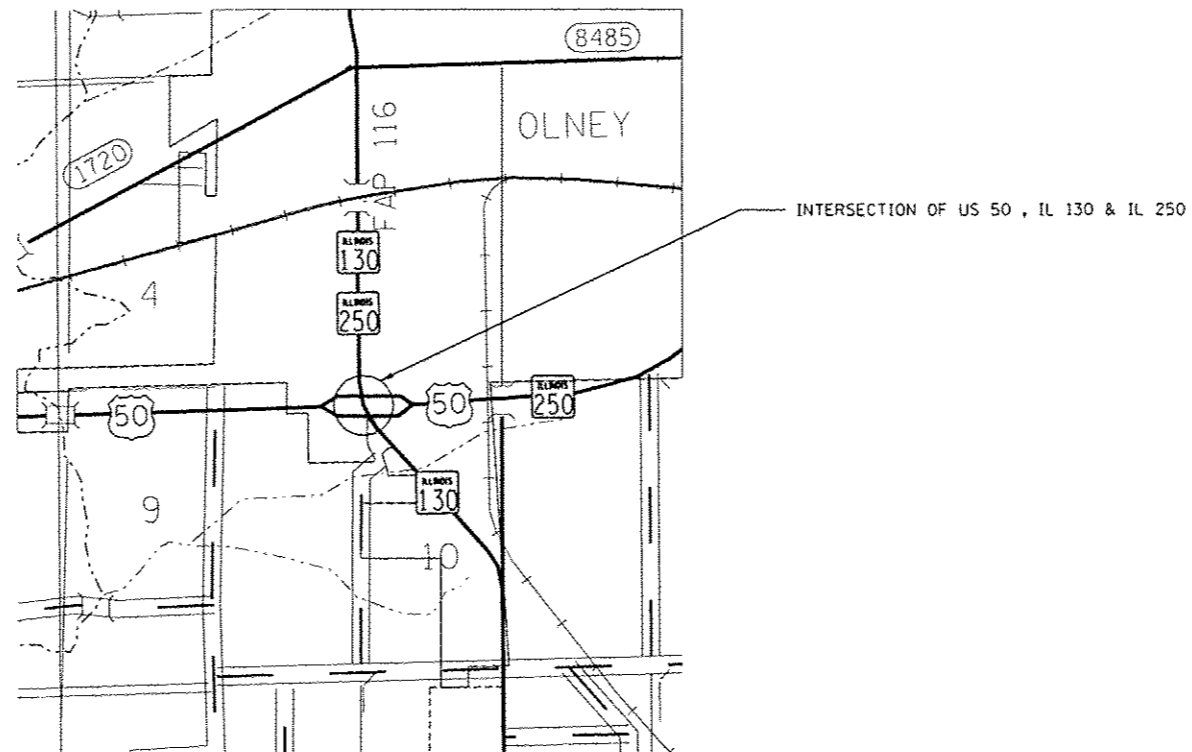


# PROPOSED HIGHWAY PLANS

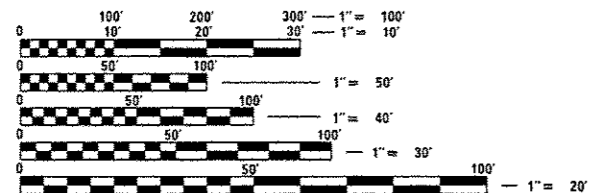
FAP ROUTE 327 & 116 (US 50, IL 130, IL 250)  
SECTION D7 HMA RESURF 2017-2

RESURFACING (3P)  
RICHLAND COUNTY

C-97-067-16



FOR INDEX OF SHEETS, SEE SHEET NO. 2  
ADT = 7350 (2015) IL 130  
ADT = 4750 (2015) US 50



FULL SIZE PLANS HAVE BEEN PREPARED USING STANDARD ENGINEERING SCALES. REDUCED SIZED PLANS WILL NOT CONFORM TO STANDARD SCALES. IN MAKING MEASUREMENTS ON REDUCED PLANS, THE ABOVE SCALES MAY BE USED.

J.U.L.I.E.  
JOINT UTILITY LOCATION INFORMATION FOR EXCAVATION  
1-800-892-0123  
OR 811

PROJECT ENGINEER: MARK DAUGHERTY  
PROJECT MANAGER: MATT BOWER

CONTRACT NO. 74772

FAP 327 (US 50)	FAP 116 (IL 130)
GROSS LENGTH = 2031.70 FT. = 0.385 MILE	GROSS LENGTH = 579.00 FT. = 0.110 MILE
NET LENGTH = 2031.70 FT. = 0.385 MILE	NET LENGTH = 579.00 FT. = 0.110 MILE

STATE OF ILLINOIS  
DEPARTMENT OF TRANSPORTATION

SUBMITTED OCTOBER 31 2016  
Jeffrey M. South  
REGIONAL ENGINEER

Dec 9 2016  
Maureen M. Addis, P.E.  
ENGINEER OF DESIGN AND ENVIRONMENT

Dec 9 2016  
Amelle [Signature]  
DIRECTOR OF PROGRAM DEVELOPMENT

PRINTED BY THE AUTHORITY  
OF THE STATE OF ILLINOIS

**INDEX OF SHEETS**

SHEET NO.	ITEM
1	COVER SHEET
2	INDEX OF SHEETS, HIGHWAY STANDARDS & GENERAL NOTES
3-4	SUMMARY OF QUANTITIES
5-6	TYPICAL CROSS SECTIONS
7-8	SCHEDULE OF QUANTITIES
9-10	PLAN SHEETS
11-14	PAVEMENT MARKING DETAILS

THE FOLLOWING STANDARDS ARE A PART OF THESE PLANS AND ARE INCLUDED FOLLOWING THE LAST NUMBERED SHEET OF THE PLANS.

STD. NO.	DESCRIPTION
000001-06	STANDARD SYMBOLS, ABBREVIATIONS, AND PATTERNS
001006	DECIMAL OF AN INCH AND OF A FOOT
442201-03	CLASS C AND D PATCHES
701006-05	OFF-ROAD OPERATIONS, 2L, 2W, 15' TO 24' FROM PAVEMENT EDGE
701011-04	OFF-ROAD MOVING OPERATIONS, 2L, 2W, DAY ONLY
701201-04	LANE CLOSURE, 2L, 2W, DAY ONLY, FOR SPEEDS >= 45MPH
701301-04	LANE CLOSURE, 2L, 2W, SHORT TIME OPERATIONS
701311-03	LANE CLOSURE, 2L, 2W, MOVING OPERATIONS - DAY ONLY
701901-06	TRAFFIC CONTROL DEVICES
780001-05	TYPICAL PAVEMENT MARKINGS
781001-04	TYPICAL APPLICATIONS RAISED REFLECTIVE PAVEMENT MARKERS

**GENERAL NOTES**

THIS SECTION SHALL BE CONSTRUCTED IN ACCORDANCE WITH THE PLANS, THE "STANDARD SPECIFICATIONS FOR ROAD AND BRIDGE CONSTRUCTION", ADOPTED APRIL 1, 2016; THE "SUPPLEMENTAL SPECIFICATIONS AND RECURRING SPECIAL PROVISIONS" INDICATED ON THE CHECK SHEET, AND THE SPECIAL PROVISIONS INCLUDED IN THE PROPOSAL.

THE WORK INCLUDED IN THIS SECTION CONSISTS OF PATCHING, HOT-MIX ASPHALT SURFACE REMOVAL, HOT-MIX ASPHALT RESURFACING, PAVEMENT MARKINGS, AND ANY OTHER WORK NECESSARY TO COMPLETE THE SECTION.

SPECIAL ATTENTION SHALL BE MADE TO ARTICLE 701.07 OF THE STANDARD SPECIFICATIONS CONCERNING DROP-OFFS. IN CURB & GUTTER AREAS, THE MAXIMUM ALLOWABLE DIFFERENTIAL IN ELEVATION AT THE EDGE OF PAVEMENT/EDGE OF GUTTER SHALL BE 1/2" AT THE END OF THE WORK DAY.

THE CONTRACTOR SHALL MILL THROUGH THE CLASS D PATCHES AFTER THE PATCHING IS COMPLETED. THIS WORK SHALL BE PAID FOR AS HMA SURFACE REMOVAL OF THE THICKNESS SPECIFIED.

THE RESIDENT ENGINEER SHALL BE THE SOLE JUDGE CONCERNING THE CURING TIME FOR THE VARIOUS HOT-MIX ASPHALT LIFTS.

THE ACTUAL LOCATIONS OF PAVEMENT PATCHING SHALL BE DETERMINED BY THE ENGINEER IN THE FIELD.

PAVEMENT MARKING SHALL BE APPLIED IN ACCORDANCE WITH SECTION 780 OF THE STANDARD SPECIFICATIONS. SHORT TERM PAVEMENT MARKING SHALL BE APPLIED TO THE MILLED SURFACE, BITUMINOUS MATERIALS (PRIME COAT), AND HOT-MIX ASPHALT SURFACE COURSE AS SPECIFIED IN SECTION 703 OF THE STANDARD SPECIFICATIONS. TEMPORARY TAPE SHALL BE USED ON THE SURFACE COURSE. PAINT SHALL BE USED ON MILLED SURFACES.

THE CONTRACTOR SHALL PROVIDE INTERNET ACCESS TO THE BITUMINOUS PLANT QUALITY CONTROL LAB SO THAT BITUMINOUS PLANT REPORTS CAN BE E-MAILED TO THE DISTRICT HEADQUARTERS. THIS WORK WILL NOT BE PAID FOR SEPARATELY BUT SHALL BE INCLUDED IN THE UNIT PRICES FOR OTHER ITEMS IN THE CONTRACT.

THE FOLLOWING MIXTURE REQUIREMENTS ARE APPLICABLE FOR THIS PROJECT:

APPLICATION	AC/PG	DESIGN AIR VOIDS	MIXTURE COMPOSITION	FRICTION AGGREGATE
<u>LEVELING BINDER (1")</u>				
POLYMERIZED HMA SURFACE COURSE, IL-9.5, N90	SBS PG 70-22	4.0% @ N=90	IL - 9.5	N/A
<u>BINDER COURSE (2 1/2")</u>				
HMA BINDER COURSE, IL-19.0, N90	PG 64-22	4.0% @ N=90	IL - 19.0	N/A
<u>HMA SURFACE COURSE (1 1/2")</u>				
POLYMERIZED HMA SURFACE COURSE, MIX "D" N90	SBS PG 70-22	4.0% @ N=90	IL - 9.5	MIX D
<u>CLASS D PATCHING</u>				
HMA ASPHALT BINDER COURSE, IL-19.0 N90	PG 64-22	4.0% @ N=90	IL - 19.0	N/A

THE FOLLOWING RATES OF APPLICATION HAVE BEEN USED IN THE CALCULATING PLAN QUANTITIES:

BITUMINOUS MATERIALS (TACK COAT)	0.05 LBS/SQ FT
BITUMINOUS MATERIALS (TACK COAT)-FOG COAT	0.025 LBS/SQ FT
SURFACE AND BINDER	112 LBS/SQ YD/INCH

• 327 & 116

FILE NAME :	USER NAME : staffennk	DESIGNED -	REVISED -	<b>STATE OF ILLINOIS DEPARTMENT OF TRANSPORTATION</b>	<b>INDEX OF SHEETS, HIGHWAY STANDARDS &amp; GENERAL NOTES</b>	E.A.P. RTE.	SECTION	COUNTY	TOTAL SHEETS	SHEET NO.
p:\11084EBIDINTEG\Illinois.gov\PI\DOT\Documents\1001 Offices\District 7\Projects\7477\DRAWING\CD\Sheets\0774772-shl-gannots\REVISED -	CHECKED -	REVISED -	•			D7 HMA RESURF 2017-2	RICHLAND	14	2	
Default	PLOT SCALE = 100.0000' / 1"	DATE -	REVISED -			CONTRACT NO. 74772				

[[ILLINOIS] FED. AID PROJECT

URBAN  
100%  
STATE

URBAN  
100%  
STATE

SUMMARY OF QUANTITIES			TOTAL QUANTITIES	CONSTRUCTION TYPE CODE	
CODE NO	ITEM	UNIT		005 US 50	005 IL 130/250
40600290	BITUMINOUS MATERIALS (TACK COAT)	POUND	7197	4950	2247
40600645	LEVELING BINDER (MACHINE METHOD), N90	TON	475	411	64
40600990	TEMPORARY RAMP	SQ YD	173	56	117
40603090	HOT-MIX ASPHALT BINDER COURSE, IL-19.0, N90	TON	307		307
40603545	POLYMERIZED HOT-MIX ASPHALT SURFACE COURSE, MIX "D", N90	TON	896	616	280
44000159	HOT-MIX ASPHALT SURFACE REMOVAL, 2 1/2"	SQ YD	8468	7334	1134
44000165	HOT-MIX ASPHALT SURFACE REMOVAL, 4"	SQ YD	2195		2195
44201789	CLASS D PATCHES, TYPE II, 12 INCH	SQ YD	120	90	30
44201794	CLASS D PATCHES, TYPE III, 12 INCH	SQ YD	115	90	25
44201796	CLASS D PATCHES, TYPE IV, 12 INCH	SQ YD	115	90	25
67100100	MOBILIZATION	LSUM	1	0.5	0.5
70100450	TRAFFIC CONTROL AND PROTECTION, STANDARD	LSUM	1	0.5	0.5
	701201				
70300100	SHORT TERM PAVEMENT MARKING	FOOT	2034	1671	363

SUMMARY OF QUANTITIES			TOTAL QUANTITIES	CONSTRUCTION TYPE CODE	
CODE NO	ITEM	UNIT		005 US 50	005 IL 130/250
70300150	SHORT TERM PAVEMENT MARKING REMOVAL	SQ FT	226	186	40
70300210	TEMPORARY PAVEMENT MARKING LETTERS AND SYMBOLS	SQ FT	172	78	94
70300220	TEMPORARY PAVEMENT MARKING - LINE 4"	FOOT	8961	7755	1206
70300240	TEMPORARY PAVEMENT MARKING - LINE 6"	FOOT	687	350	337
70300280	TEMPORARY PAVEMENT MARKING - LINE 24"	FOOT	134	52	82
78000100	THERMOPLASTIC PAVEMENT MARKING - LETTERS AND SYMBOLS	SQ FT	172	78	94
78000200	THERMOPLASTIC PAVEMENT MARKING - LINE 4"	FOOT	8961	7755	1206
78000400	THERMOPLASTIC PAVEMENT MARKING - LINE 6"	FOOT	687	350	337
78000500	THERMOPLASTIC PAVEMENT MARKING - LINE 8"	FOOT	324		324
78000650	THERMOPLASTIC PAVEMENT MARKING - LINE 24"	FOOT	134	52	82
78000600	THERMOPLASTIC PAVEMENT MARKING - LINE 12"	FOOT	386		386
78100100	RAISED REFLECTIVE PAVEMENT MARKER	EACH	135	106	29
X7015005	CHANGEABLE MESSAGE SIGN	CAL DA	56	28	28
X7830060	GROOVING FOR RECESSED PAVEMENT MARKING, LETTERS AND SYMBOLS	SQ FT	172	78	94

\* SPECIALTY ITEM

FILE NAME *	USER NAME = staffpank	DESIGNED -	REVISED -
p:\IL084EBID\INTEC\illinois.gov\PWIDOT\Documents\1007 Offices\District 7\Projects\7477\DRAWING\CAD\shoos\0774772-sht-500.dgn		CHECKED -	REVISED -
		DATE -	REVISED -

STATE OF ILLINOIS  
DEPARTMENT OF TRANSPORTATION

SUMMARY OF QUANTITIES

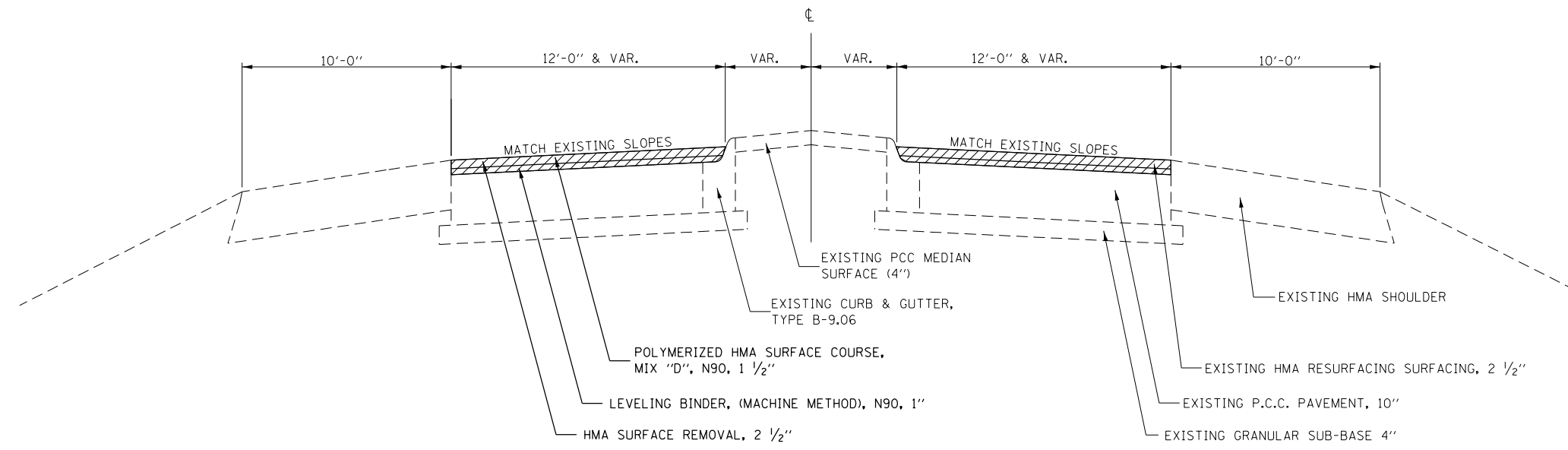
SCALE: SHEET OF SHEETS STA. TO STA.

• 327 & 116

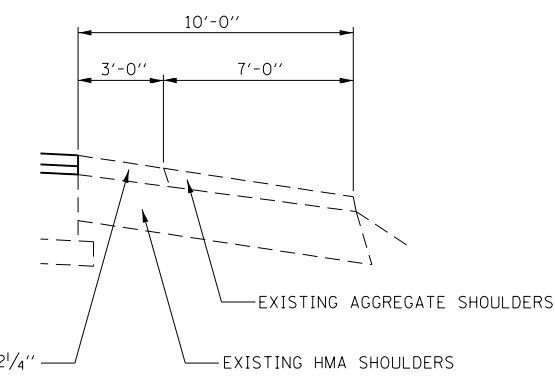
F.A.P. RTE.	SECTION	COUNTY	TOTAL SHEETS	SHEET NO.
*	D7 HMA RESURF 2017-2	RICHLAND	14	3
CONTRACT NO. 74772			ILLINOIS FED. AID PROJECT	



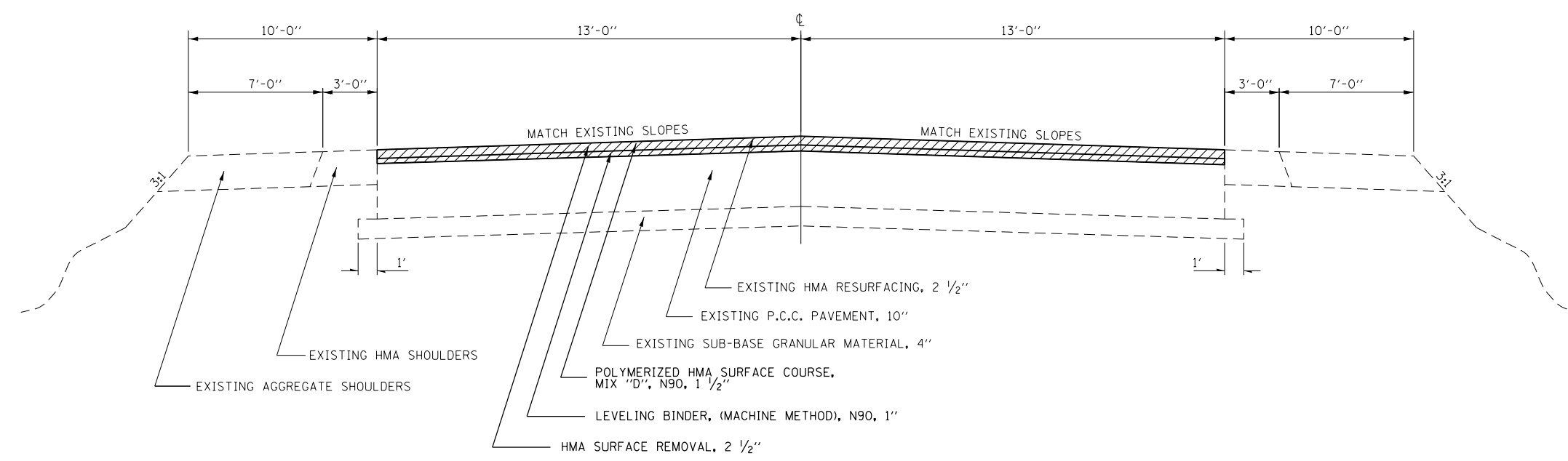
TYPICAL CROSS SECTION US 50  
 STATION 872+85 TO STATION 881+66.70 BK =  
 STATION 1+00AH TO STATION 12+00



TYPICAL CROSS SECTION US 50  
 STATION 872+92 RT TO STATION 880+90 RT  
 STATION 7+93 LT TO STATION 12+00 LT  
 STATION 11+28 RT TO STATION 12+00 RT



TYPICAL CROSS SECTION US 50  
 STATION 12+00 TO STATION 12+50



• 327 & 116

FILE NAME =	USER NAME = steffenmk	DESIGNED -	REVISED -
pw:\IL\084EBIDINTEG\illinois.gov\PWIDOT\Documents\DOT Offices\District 7\Projects\7472\Drawings\CAD\Sheets\D774772-sht-typical.dwg		DRAWN -	REVISED -
Default	PLOT SCALE = 100.0000' / 1in.	CHECKED -	REVISED -
	PLOT DATE = 10/28/2016	DATE -	REVISED -

STATE OF ILLINOIS  
 DEPARTMENT OF TRANSPORTATION

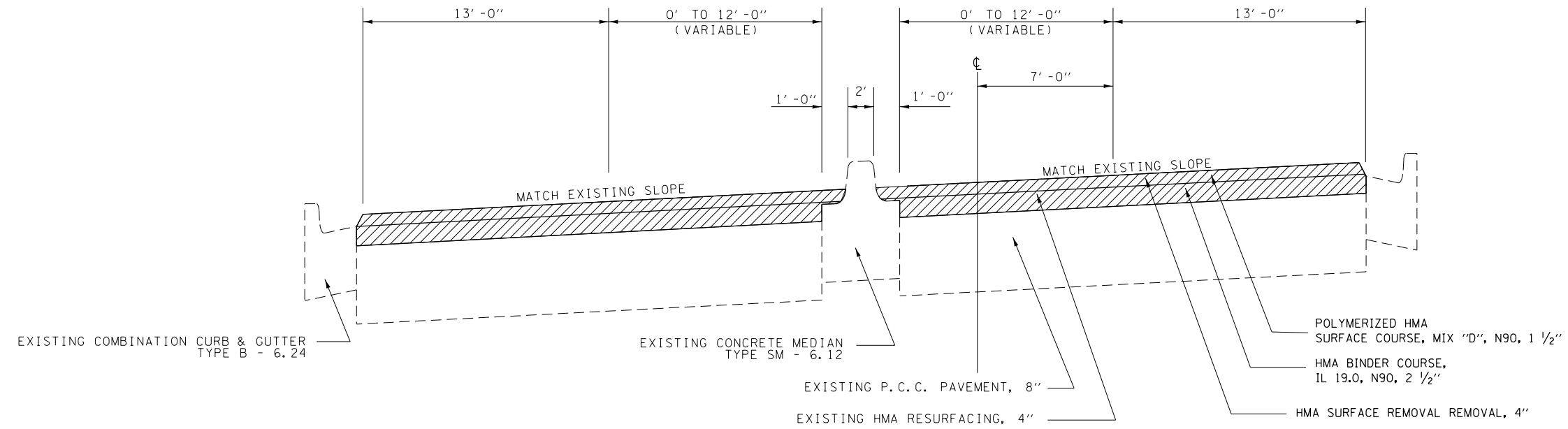
TYPICAL CROSS SECTIONS

SCALE: SHEET OF SHEETS STA. TO STA.

F.A.P. RTE.	SECTION	COUNTY	TOTAL SHEETS	SHEET NO.
•	D7 HMA RESURF 2017-2	RICHLAND	14	5
CONTRACT NO. 74772			ILLINOIS FED. AID PROJECT	

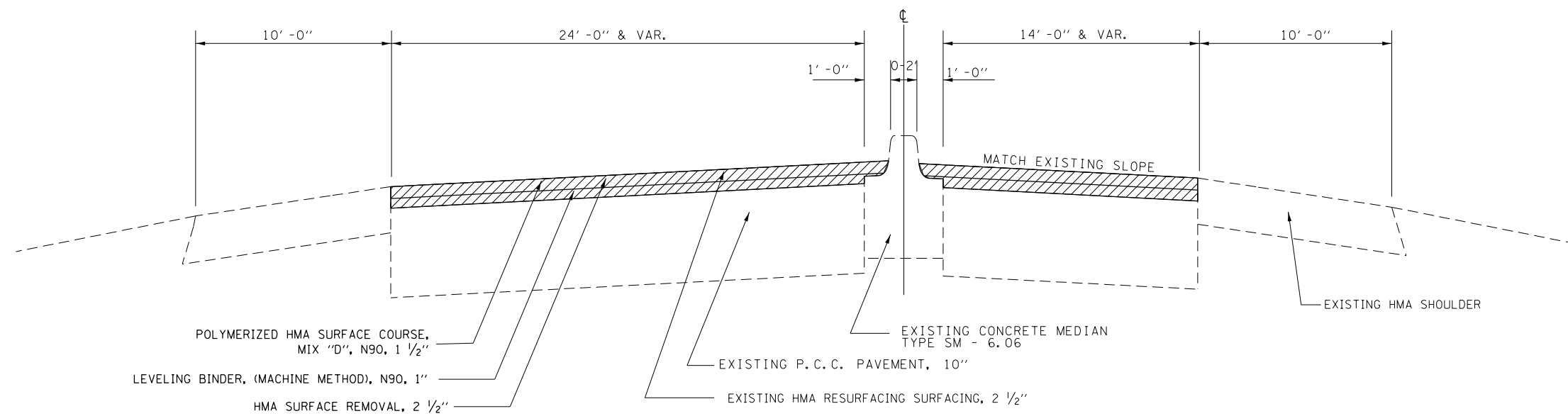
TYPICAL CROSS SECTION IL 130

STATION 55+00 TO STATION 59+03



TYPICAL CROSS SECTION IL 130

STATION 59+03 TO STATION 60+79



• 327 & 116

FILE NAME =	USER NAME = steffenmk	DESIGNED -	REVISED -
pw:\IL\084EBIDINTEG\illinois.gov\PWIDOT\Documents\IDOT Offices\District 7\Projects\7472\Drawings\CAD\Sheets\0774772-sht-typical.dwg		DRAWN -	REVISED -
Default	PLOT SCALE = 100.0000' / in.	CHECKED -	REVISED -
	PLOT DATE = 10/28/2016	DATE -	REVISED -

STATE OF ILLINOIS  
DEPARTMENT OF TRANSPORTATION

TYPICAL CROSS SECTIONS

SCALE: SHEET OF SHEETS STA. TO STA.

F.A.P. RTE.	327, 116 SECTION	COUNTY	TOTAL SHEETS	SHEET NO.
	D7 HMA RESURF 2017-2	RICHLAND	14	6
CONTRACT NO. 74772			ILLINOIS FED. AID PROJECT	

PAVING SCHEDULE

STATION TO STATION	LENGTH (FOOT)	QUANTITY (POUND)	QUANTITY (TON)	QUANTITY (TON)	QUANTITY (TON)	QUANTITY (SQ YD)	QUANTITY (TON)
<b>US 50</b>							
RT 872+85.00	874+38.00	153.00	172.1	14.28		21.4	255.0
RT 874+38.00	879+40.70	502.70	527.8	43.79		65.7	782.0
RT 879+40.70	881+16.70	176.00	264.0	21.90		32.9	391.1
RT 881+16.70	881+66.70	50.00	97.5	8.09		12.1	144.4
RT 1+00.00	4+18.00	318.00	620.1	51.45		77.2	918.7
RT 4+18.00	9+46.00	528.00	554.4	45.99		69.0	821.3
RT 9+46.00	11+28.00	182.00	197.9	16.42		24.6	293.2
RT 11+28.00	12+50.00	122.00	119.0	9.87		14.8	176.2
		<b>TOTAL FOR US 50=</b>					
		<b>4950</b>	<b>411</b>	<b>0</b>	<b>616</b>	<b>7334</b>	<b>0</b>
<b>IL 130</b>							
RT 55+00.00	56+02.00	102.00	99.5	20.6	12.4	147.3	
RT 56+02.00	57+31.00	129.00	179.0	37.1	22.3	265.2	
RT 57+31.00	58+00.00	69.00	124.2	25.8	15.5	184.0	
RT 58+00.00	59+03.00	103.00	379.1	78.7	47.2	562.0	
RT 59+56.00	60+79.00	123.00	281.2	23.4	35.0	417.0	
		<b>TOTAL FOR IL 130=</b>					
		<b>2247</b>	<b>64</b>	<b>307</b>	<b>280</b>	<b>1134</b>	<b>2195</b>
		<b>TOTAL FOR US 50 AND IL 130=</b>					
		<b>7197</b>	<b>475</b>	<b>307</b>	<b>896</b>	<b>8468</b>	<b>2195</b>

40600990 TEMPORARY RAMP				MAINLINE	AREA
STATION	TO	STATION	LENGTH (FT)	WIDTH (FT)	(SQ YD)
<b>US 50</b>					
872+85.00		872+94.00	9.0	30	30.0
12+41.00		12+50.00	9.0	26	26.0
<b>TOTAL FOR US 50=</b>					<b>56</b>
<b>IL 130</b>					
55+00.00		55+14.00	14.0	37	57.6
60+65.00		60+79.00	14.0	38	59.1
<b>TOTAL FOR IL 130=</b>					<b>117</b>
<b>TOTAL FOR US 50 &amp; IL 130=</b>					<b>173</b>

70300100 SHORT TERM PAVEMENT MARKING				YELLOW	WHITE
STATION	TO	STATION	LENGTH (FT)	AROUND MEDIAN (FT)	EDGELINE (FT)
<b>US 50</b>					
872+85.00		881+66.70	881.7	529.0	211.6
1+00.00		3+25.00	225	135.0	54.0
4+18.00		12+50.00	832	499.2	199.7
LEFT TURN LANE WEST LEG=			250		30.0
LEFT TURN LANE EAST LEG=			100		12.0
<b>TOTAL FOR US 50=</b>				<b>1163</b>	<b>507</b>
<b>IL 130</b>					
55+00.00		58+83.00	383	229.8	
59+69.00		60+79.00	110	66.0	26.4
LEFT TURN LANES NORTH LEG=			232		27.8
LEFT TURN LANE SOUTH LEG=			105		12.6
<b>TOTAL FOR IL 130=</b>				<b>296</b>	<b>67</b>
<b>TOTAL FOR US 50 &amp; IL 130=</b>				<b>1459</b>	<b>574</b>
<b>GRAND TOTAL=</b>				<b>2033</b>	

70300150 SHORT TERM PAVEMENT MARKING REMOVAL				YELLOW	WHITE
STATION	TO	STATION	LENGTH (FT)	AROUND MEDIAN (SQ FT)	EDGELINE (SQ FT)
<b>US 50</b>					
872+85.00		881+66.70	881.7	58.8	23.5
1+00.00		3+25.00	225	15.0	6.0
4+18.00		12+50.00	832	55.5	22.2
LEFT TURN LANE WEST LEG=			250		3.3
LEFT TURN LANE EAST LEG=			100		1.3
<b>TOTAL FOR US 50=</b>				<b>129</b>	<b>56</b>
<b>IL 130</b>					
55+00.00		58+83.00	383	25.5	
59+69.00		60+79.00	110	7.3	2.9
LEFT TURN LANES NORTH LEG=			232		3.1
LEFT TURN LANE SOUTH LEG=			105		1.4
<b>TOTAL FOR IL 130=</b>				<b>33</b>	<b>7</b>
<b>TOTAL FOR US 50 &amp; IL 130=</b>				<b>162</b>	<b>64</b>
<b>GRAND TOTAL=</b>				<b>225</b>	

• 327 & 116

70300210 TEMPORARY PEVEMENT MARKING LETTERS AND SYMBOLS			
RTE	DESCRIPTION	NUMBER OF ARROWS	WHITE (SQ FT)
US 50	LEFT TURN ARROWS	5	78
IL 130	LEFT TURN ARROWS	6	94
		<b>TOTAL =</b>	<b>172</b>

70300220 TEMPORARY PAVEMENT MARKING - LINE 4"					
			YELLOW	WHITE	
STATION	TO	STATION	LENGTH (FT)	AROUND MEDIAN (FT)	EDGE LINE (FT)
<b>US 50</b>					
872+85.00		881+66.70	881.7	1763.4	1763.4
1+00.00		3+25.00	225	450.0	450.0
4+18.00		12+50.00	832	1664.0	1664.0
<b>TOTAL FOR US 50=</b>				<b>3877</b>	<b>3877</b>
<b>IL 130</b>					
55+00.00		58+83.00	383	766.0	
59+69.00		60+79.00	110	220.0	220.0
<b>TOTAL FOR IL 130=</b>				<b>986</b>	<b>220.0</b>
<b>TOTAL FOR US 50 &amp; IL 130=</b>				<b>4863</b>	<b>4097</b>
<b>GRAND TOTAL=</b>				<b>8961</b>	

70300240 TEMPORARY PAVEMENT MARKING - LINE 6"		
		WHITE
US 50		LENGTH (FT)
LEFT TURN LANE WEST LEG=		250.0
LEFT TURN LANE EAST LEG=		100.0
<b>TOTAL FOR US 50=</b>		<b>350.0</b>
<b>IL 130</b>		
LEFT TURN LANES NORTH LEG=		232.0
LEFT TURN LANE SOUTH LEG=		105.0
<b>TOTAL FOR IL 130=</b>		<b>337.0</b>
<b>TOTAL FOR US 50 &amp; IL 130=</b>		<b>687</b>

78000100 THERMOPLASTIC PAVEMENT MARKING - LETTERS AND SYMBOLS			
RTE	DESCRIPTION	NUMBER OF ARROWS	WHITE (SQ FT)
US 50	LEFT TURN ARROWS	5	78
IL 130	LEFT TURN ARROWS	6	94
		<b>TOTAL =</b>	<b>172</b>

78000200 THERMOPLASTIC PAVEMENT MARKING - LINE 4"					
			YELLOW	WHITE	
STATION	TO	STATION	LENGTH (FT)	AROUND MEDIAN (FT)	EDGE LINE (FT)
<b>US 50</b>					
872+85.00		881+66.70	881.7	1763.4	1763.4
1+00.00		3+25.00	225	450.0	450.0
4+18.00		12+50.00	832	1664.0	1664.0
<b>TOTAL FOR US 50=</b>				<b>3877</b>	<b>3877</b>
<b>IL 130</b>					
55+00.00		58+83.00	383	766.0	
59+69.00		60+79.00	110	220.0	220.0
<b>TOTAL FOR IL 130=</b>				<b>986</b>	<b>220.0</b>
<b>TOTAL FOR US 50 &amp; IL 130=</b>				<b>4863</b>	<b>4097</b>
<b>GRAND TOTAL=</b>				<b>8961</b>	

78000400 THERMOPLASTIC PAVEMENT MARKING - LINE 6"		
US 50		WHITE (FT)
LEFT TURN LANE WEST LEG=		250.0
LEFT TURN LANE EAST LEG=		100.0
<b>TOTAL FOR US 50=</b>		<b>350.0</b>
<b>IL 130</b>		
LEFT TURN LANES NORTH LEG=		232.0
LEFT TURN LANE SOUTH LEG=		105.0
<b>TOTAL FOR IL 130=</b>		<b>337.0</b>
<b>TOTAL FOR US 50 &amp; IL 130=</b>		<b>687</b>

78100100 RAISED REFLECTIVE PAVEMENT MARKER				
STATION	TO	STATION	LENGTH (FT)	EACH
<b>US 50</b>				
872+85.00		881+66.70	881.7	44.1
1+00.00		3+25.00	225.0	11.3
4+18.00		12+50.00	832.0	41.6
TURN LANE WEST LEG=			250.0	6.3
TURN LANE EAST LEG=			100.0	2.5
<b>TOTAL FOR US 50=</b>				<b>106</b>
<b>IL 130</b>				
55+03.00		58+03.00	300.0	15.0
59+69.00		60+79.00	110.0	5.5
TURN LANES NORTH LEG =			232.0	5.8
TURN LANE SOUTH LEG =			105.0	2.6
<b>TOTAL FOR IL 130=</b>				<b>29</b>
<b>TOTAL FOR US 50 &amp; IL 130=</b>				<b>135</b>

• 327 & 116

FILE NAME =	USER NAME = steffenmk	DESIGNED -	REVISED -
p:\11084EBID\INTEG.illinois.gov\PI\DOT\Documents\DOT Offices\District 7\Projects\7472\Drawings\CAD\Sheets\0774772-sht-schedule		CHECKED -	REVISED -
Default	PLOT SCALE = 100.0000' / in.	DATE -	REVISED -
	PLOT DATE = 10/28/2016		

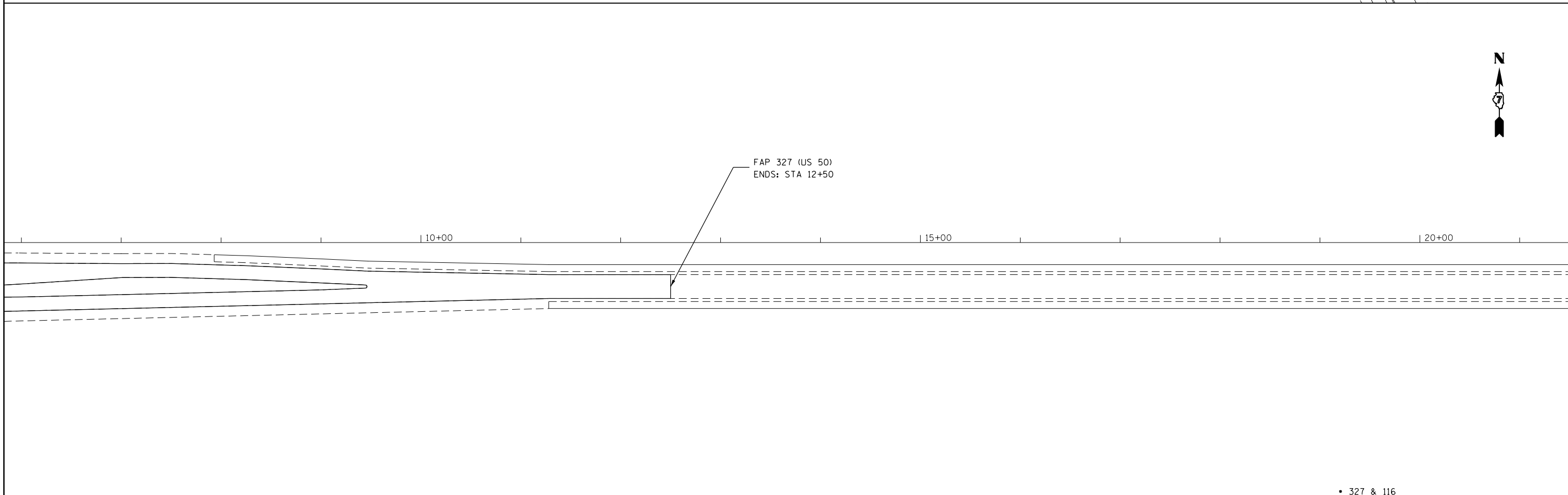
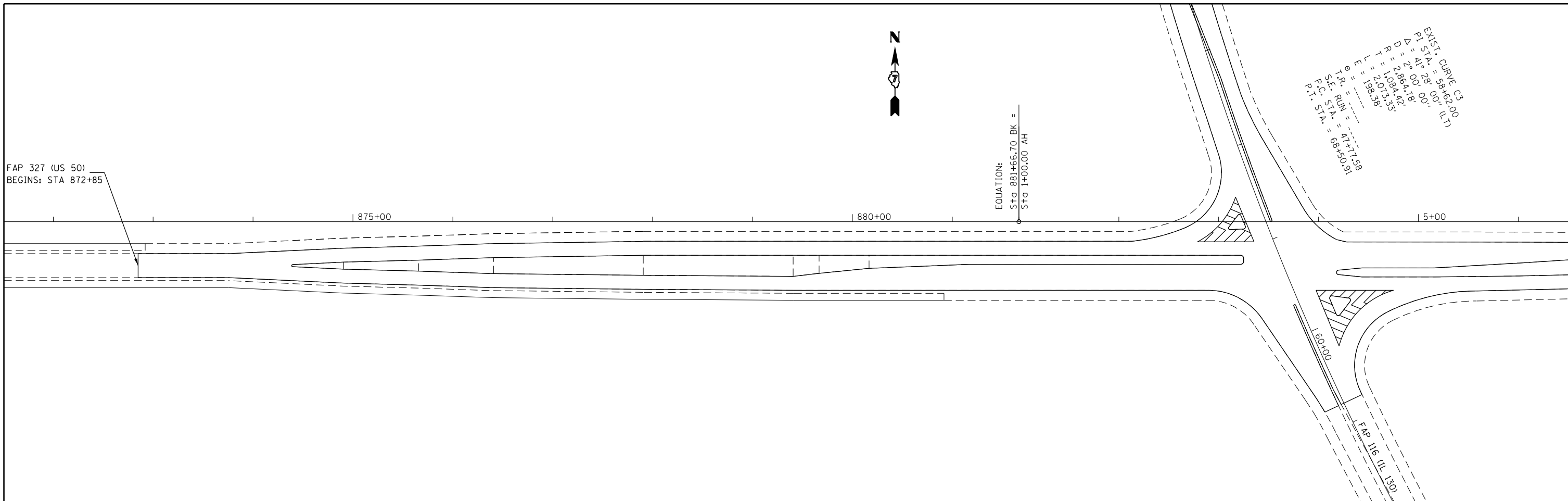
**STATE OF ILLINOIS  
DEPARTMENT OF TRANSPORTATION**

**SCHEDULE OF QUANTITIES**

SCALE: SHEET OF SHEETS STA. TO STA.

F.A.P. RTE.	SECTION	COUNTY	TOTAL SHEETS	SHEET NO.
•	D7 HMA RESURF 2017-2	RICHLAND	14	8
			<b>CONTRACT NO. 74772</b>	
ILLINOIS FED. AID PROJECT				





FILE NAME = USER NAME = bowerml DESIGNED - REVISIONS: PLOT SCALE = 100.0000' / in. CHECKED - DATE - PLOT DATE = 11/3/2016				REVISIONS: REVISIONS: REVISIONS: REVISIONS:				<b>STATE OF ILLINOIS DEPARTMENT OF TRANSPORTATION</b>				<b>PLAN SHEET US 50</b>				F.A.P. R.T.E. = SECTION = D7 HMA RESURF 2017-2 COUNTY = RICHLAND CONTRACT NO. 74772		TOTAL SHEETS = 14 SHEET NO. = 9	
SCALE:						SHEET OF SHEETS STA. TO STA.						ILLINOIS FED. AID PROJECT							

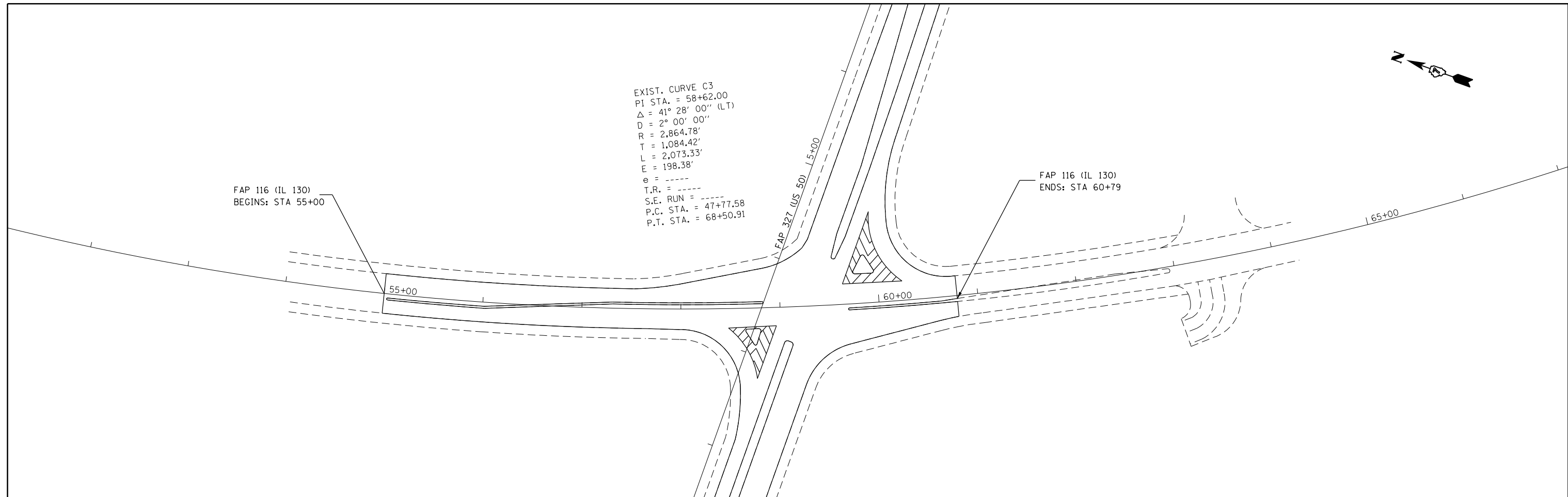
• 327 & 116



EXIST. CURVE C3  
 PI STA. = 58+62.00  
 $\Delta = 41^\circ 28' 00''$  (LT)  
 D = 2° 00' 00"  
 R = 2,864.78'  
 T = 1,084.42'  
 L = 2,073.33'  
 E = 198.38'  
 e = -----  
 T.R. = -----  
 S.E. RUN = -----  
 P.C. STA. = 47+77.58  
 P.T. STA. = 68+50.91

FAP 116 (IL 130)  
 BEGINS: STA 55+00

FAP 116 (IL 130)  
 ENDS: STA 60+79



• 327 & 116

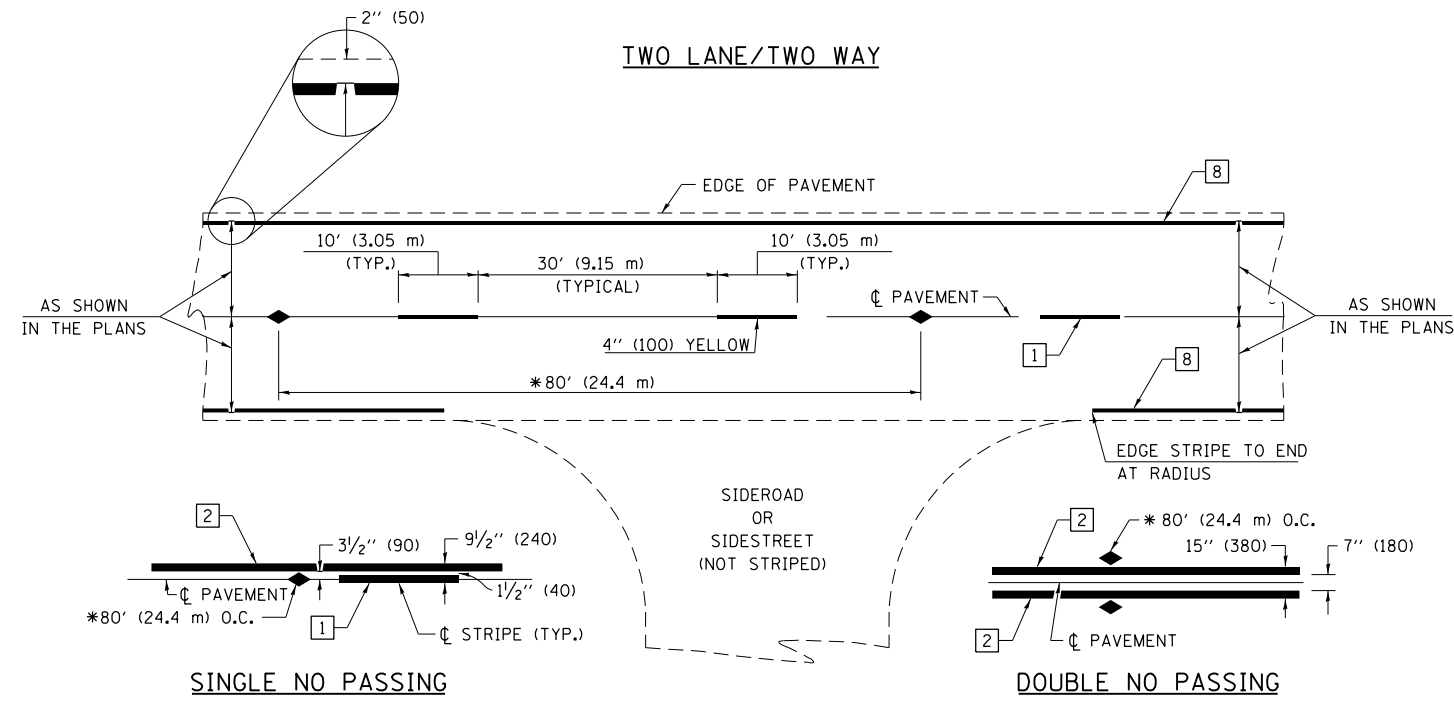
FILE NAME =	USER NAME = bowerml	DESIGNED -	REVISED -
pw:\IL084EBIDINTEG.illinois.gov\PIWIDOT\Documents\DOT Offices\District 7\Projects\7472\Drawings\CAD\Sheets\0774772-sht-plan.dgn		DRAWN -	REVISED -
Default	PLOT SCALE = 100.0000' / in.	CHECKED -	REVISED -
	PLOT DATE = 11/3/2016	DATE -	REVISED -

**STATE OF ILLINOIS  
 DEPARTMENT OF TRANSPORTATION**

**PLAN SHEET  
 IL 130**

SCALE: SHEET OF SHEETS STA. TO STA.

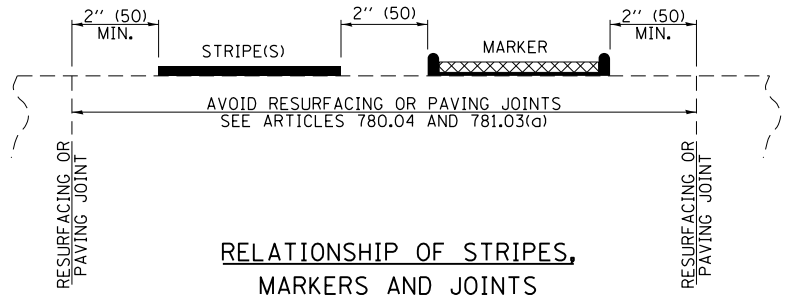
F.A.P. RTE.	SECTION	COUNTY	TOTAL SHEETS	SHEET NO.
•	D7 HMA RESURF 2017-2	RICHLAND	14	10
ILLINOIS FED. AID PROJECT			CONTRACT NO. 74772	



\* REDUCE TO 40' (12.2 m) O.C. ON CURVES WITH POSTED OR ADVISORY SPEEDS OF 45 mph (70 km/h) OR LESS.

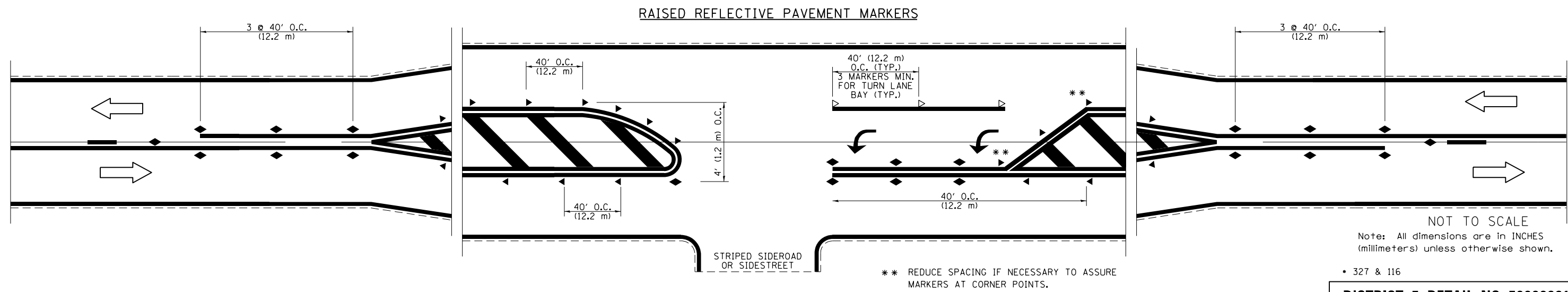
**PAVEMENT MARKING LEGEND**

- 1 4" (100) SKIP-DASH (YELLOW)
- 2 4" (100) SOLID (YELLOW)
- 3 12" (300) DIAGONAL (YELLOW)
- 4 4" (100) DOUBLE YELLOW (NARROW)
- 5 12" (300) SOLID WHITE
- 6 RESERVED
- 7 6" (150) SKIP-DASH (WHITE)
- 8 4" (100) SOLID (WHITE)
- 9 12" (300) DIAGONAL (WHITE)
- 10 6" (150) SOLID (WHITE)
- 11 24" (600) STOP BAR (WHITE)
- 12 8" (200) SOLID (WHITE)
- 13 4" (100) PARKING WHITE



**TYPICAL PAVEMENT MARKERS LEGEND**

- ◆ TWO-WAY AMBER MARKER
- ▶ ONE-WAY AMBER MARKER
- ▷ ONE-WAY CRYSTAL MARKER

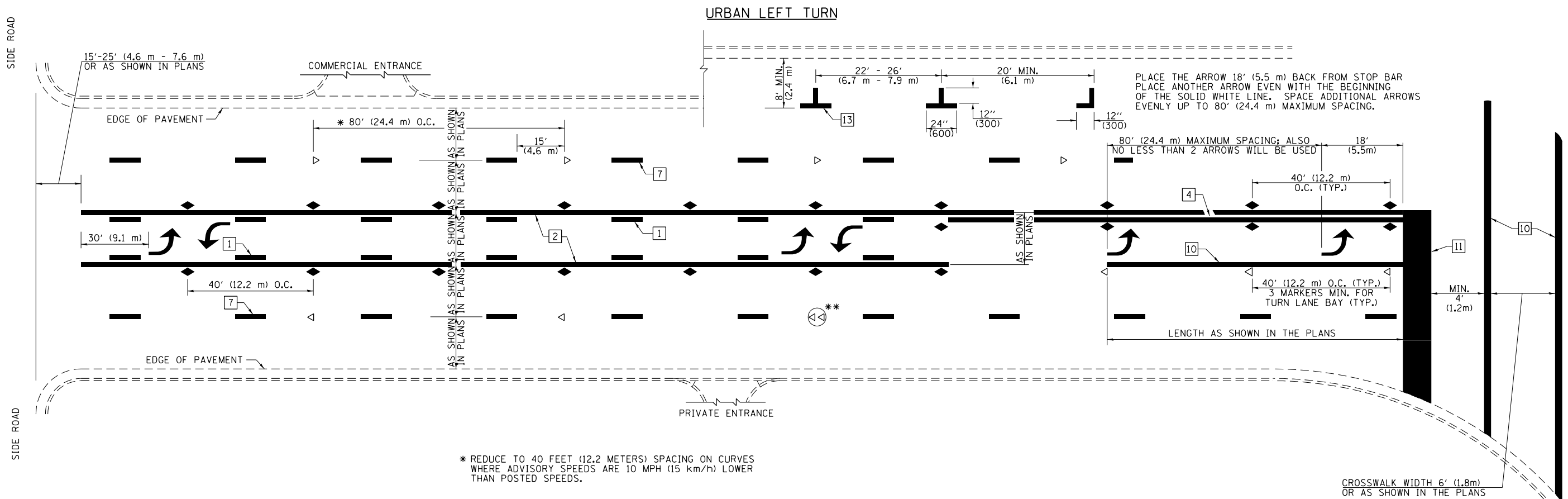


NOT TO SCALE  
Note: All dimensions are in INCHES (millimeters) unless otherwise shown.

• 327 & 116

FILE NAME =	USER NAME = steffenmk	DESIGNED -	REVISED -	<b>STATE OF ILLINOIS DEPARTMENT OF TRANSPORTATION</b>	<b>PAVEMENT MARKING AND RAISED REFLECTIVE PAVEMENT MARKERS (RURAL &amp; URBAN APPLICATIONS)</b>	F.A.P. 327, 116 SECTION	COUNTY	TOTAL SHEETS	SHEET NO.
pw:\IL\084EBIDINTEG\illinois.gov\PIWIDOT\Documents\IDOT Offices\District 7\Projects\7472\Drawings\CABsheets\D774772-shr-details.dwg	PLotted	CHECKED -	REVISED -			D7 HMA RESURF 2017-2	RICHLAND	14	11
	PLOT SCALE = 2.0000' / in.	DATE -	REVISED -			CONTRACT NO. 74772		ILLINOIS FED. AID PROJECT	
	PLOT DATE = 10/28/2016					SCALE:	SHEET NO. 1 OF 4 SHEETS	STA.	TO STA.

**DISTRICT 7 DETAIL NO. 7800001**



PLACE THE ARROW 18' (5.5 m) BACK FROM STOP BAR  
 PLACE ANOTHER ARROW EVEN WITH THE BEGINNING  
 OF THE SOLID WHITE LINE. SPACE ADDITIONAL ARROWS  
 EVENLY UP TO 80' (24.4 m) MAXIMUM SPACING.

\* REDUCE TO 40 FEET (12.2 METERS) SPACING ON CURVES  
 WHERE ADVISORY SPEEDS ARE 10 MPH (15 km/h) LOWER  
 THAN POSTED SPEEDS.

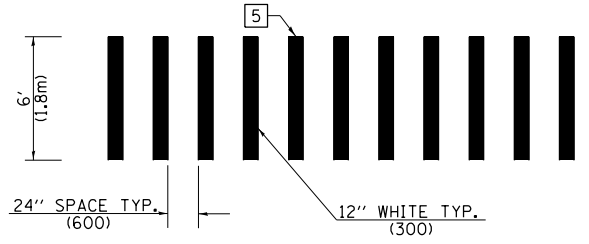
\*\* DOUBLE LANE LINE MARKERS SHALL BE SPECIFIED  
 AND SPACED AS SHOWN IN HIGHWAY STANDARD  
 781001 FOR MULTI-LANE DIVIDED AND UNDIVIDED  
 HIGHWAYS.

**PAVEMENT MARKING LEGEND**

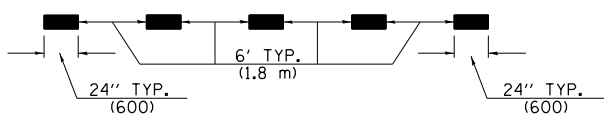
- 1 4" (100) SKIP-DASH (YELLOW)
- 2 4" (100) SOLID (YELLOW)
- 3 12" (300) DIAGONAL (YELLOW)
- 4 4" (100) DOUBLE YELLOW (NARROW)
- 5 12" (300) SOLID WHITE
- 6 RESERVED
- 7 6" (150) SKIP-DASH (WHITE)
- 8 4" (100) SOLID (WHITE)
- 9 12" (300) DIAGONAL (WHITE)
- 10 6" (150) SOLID (WHITE)
- 11 24" (600) STOP BAR (WHITE)
- 12 8" (200) SOLID (WHITE)
- 13 4" (100) PARKING WHITE

**GENERAL NOTES**

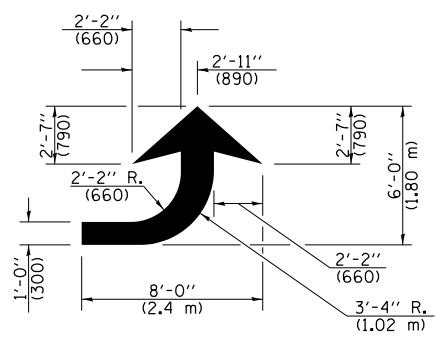
1. TURN ARROW PAIRS SHALL BE PLACED AT 250' (75 m) INTERVALS AND SHALL BE EVENLY SPACED BETWEEN BOTH ENDS OF THE BIDIRECTIONAL LEFT TURN LANE. USE A MINIMUM OF TWO PAIRS PER BLOCK.
2. THE SOLID YELLOW PAVEMENT MARKINGS [2] SHOULD GENERALLY START OR END NEAR THE RADIUS POINT OF EACH STREET RETURN EXCEPT WHERE ONE OR BOTH ENDS WOULD INCLUDE STOP BARS.
3. THE SKIP-DASH PAVEMENT MARKINGS [1] OR [7] SHOULD BE CENTERED BETWEEN BOTH ENDS OF EACH CITY BLOCK AND SHALL BE PLACED SO THEY LINE UP ACROSS FROM EACH OTHER.
4. USE LARGE ARROW SIZE FOR BOTH RURAL AND URBAN LOCATIONS. (SEE LAST PAGE OF SECTION 780x FOR SYMBOLS TABLE)
5. LANE LINE EXTENSIONS SHALL BE THE SAME COLOR AND WIDTH AS THE LANE LINE BEING EXTENDED.



**CROSSWALK DETAIL  
 (DECATUR CITY LIMITS ONLY)**

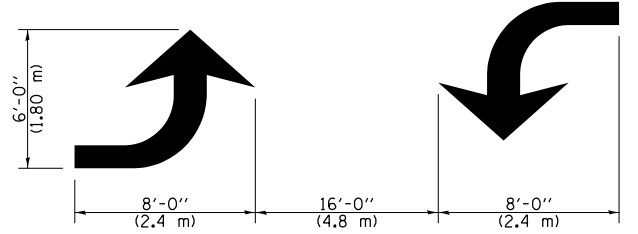


**LANE LINE EXTENSIONS**



**LEFT ARROW**

REVERSE FOR RIGHT ARROW  
 AREA = 15.6 SQ. FT. (1.47 m<sup>2</sup>)  
 (WHITE)



**TYPICAL DOUBLE  
 TURN ARROWS (WHITE)**

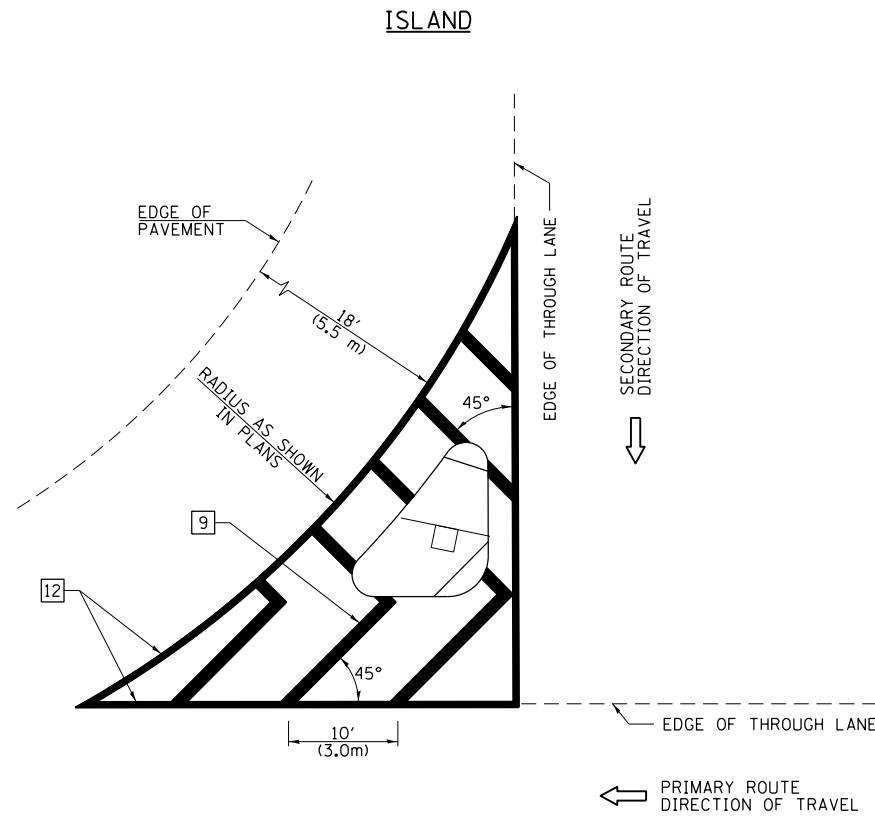
NOT TO SCALE

Note: All dimensions are in INCHES (millimeters) unless otherwise shown.

• 327 & 116

**DISTRICT 7 DETAIL NO. 7800001**

FILE NAME =	USER NAME = steffenmk	DESIGNED -	REVISED -	<b>STATE OF ILLINOIS DEPARTMENT OF TRANSPORTATION</b>	<b>PAVEMENT MARKING AND RAISED REFLECTIVE PAVEMENT MARKERS (RURAL &amp; URBAN APPLICATIONS)</b>	F.A.P. 327, 116 SECTION	COUNTY	TOTAL SHEETS	SHEET NO.
pw:\11\084EBIDINTEG.illinois.gov\PWIDOT\Documents\DOT Offices\District 7\Projects\7472\Drawings\CABsheets\0774772-sht-details.dwg	PLotted Scale = 2.0000' / in.	CHECKED -	REVISED -			D7 HMA RESURF 2017-2	RICHLAND	14	12
	PLOT DATE = 10/28/2016	DATE -	REVISED -			CONTRACT NO. 74772			
						ILLINOIS FED. AID PROJECT			



**GENERAL NOTES**

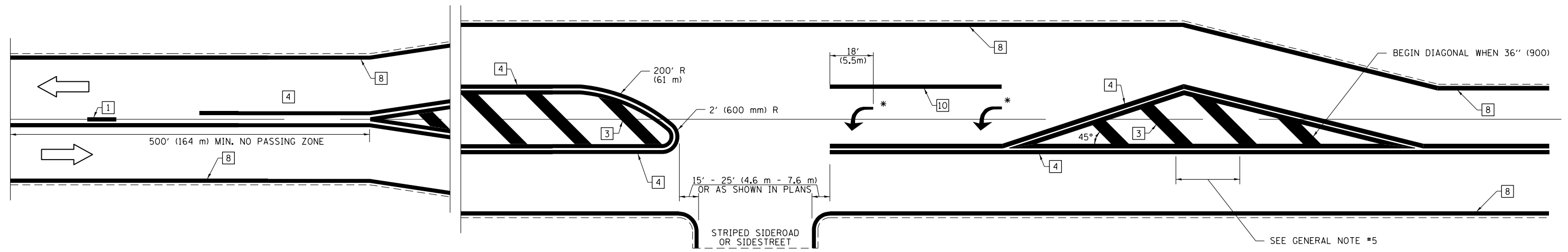
1. RAISED AND CORRUGATED MEDIANS SHALL BE OUTLINED WITH [2] IF PRESENT.
2. SOME OF THE INFORMATION INCLUDED WITH THIS DETAIL MAY NOT BE APPLICABLE TO THIS IMPROVEMENT.
3. PAVEMENT MARKINGS ARE TO BE EXTENDED THROUGH OMISSIONS WHEN APPLICABLE.
4. FINAL PAVEMENT MARKINGS SHALL BE IN PLACE PRIOR TO PLACING ANY RAISED REFLECTIVE PAVEMENT MARKERS.
5. THE FOLLOWING CRITERIA SHALL BE USED FOR SELECTING THE DIAGONAL PAVEMENT MARKING SPACING:

< 30 MPH (< 50 km/h)	15' (4.5 m)
30-45 MPH (50-75 km/h)	20' (6.0 m)
> 45 MPH (> 75 km/h)	30' (9.0 m)

**PAVEMENT MARKING LEGEND**

- [1] 4" (100) SKIP-DASH (YELLOW)
- [2] 4" (100) SOLID (YELLOW)
- [3] 12" (300) DIAGONAL (YELLOW)
- [4] 4" (100) DOUBLE YELLOW (NARROW)
- [5] 12" (300) SOLID WHITE
- [6] RESERVED
- [7] 6" (150) SKIP-DASH (WHITE)
- [8] 4" (100) SOLID (WHITE)
- [9] 12" (300) DIAGONAL (WHITE)
- [10] 6" (150) SOLID (WHITE)
- [11] 24" (600) STOP BAR (WHITE)
- [12] 8" (200) SOLID (WHITE)
- [13] 4" (100) PARKING WHITE

**RURAL LEFT TURN STRIPING**



\* PLACE AN ARROW 18' (5.5 m) BACK FROM STOP BAR. PLACE ANOTHER ARROW EVEN WITH THE BEGINNING OF THE SOLID WHITE LINE. SPACE ADDITIONAL ARROWS EVENLY UP TO 80' (24.4 m) MAXIMUM SPACING. USE MINIMUM OF 2 ARROWS.

NOT TO SCALE

Note: All dimensions are in INCHES (millimeters) unless otherwise shown.

• 327 & 116

**DISTRICT 7 DETAIL NO. 7800001**

FILE NAME =	USER NAME = steffenmk	DESIGNED -	REVISED -
pw:\IL\084EBIDINTEG\illinois.gov\PWIDOT\Documents\IDOT Offices\District 7\Projects\7472\Drawings\CABsheets\0774772-sht-details.dwg		DRAWN -	REVISED -
	PLOT SCALE = 2.0000' / in.	CHECKED -	REVISED -
	PLOT DATE = 10/28/2016	DATE -	REVISED -

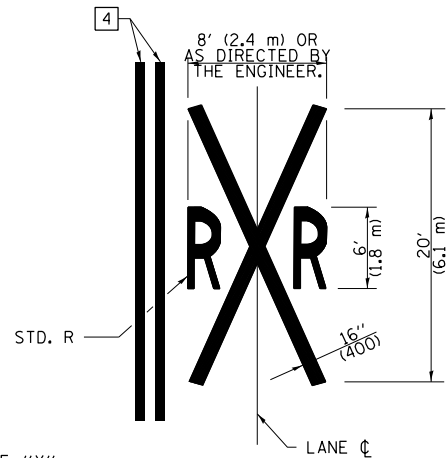
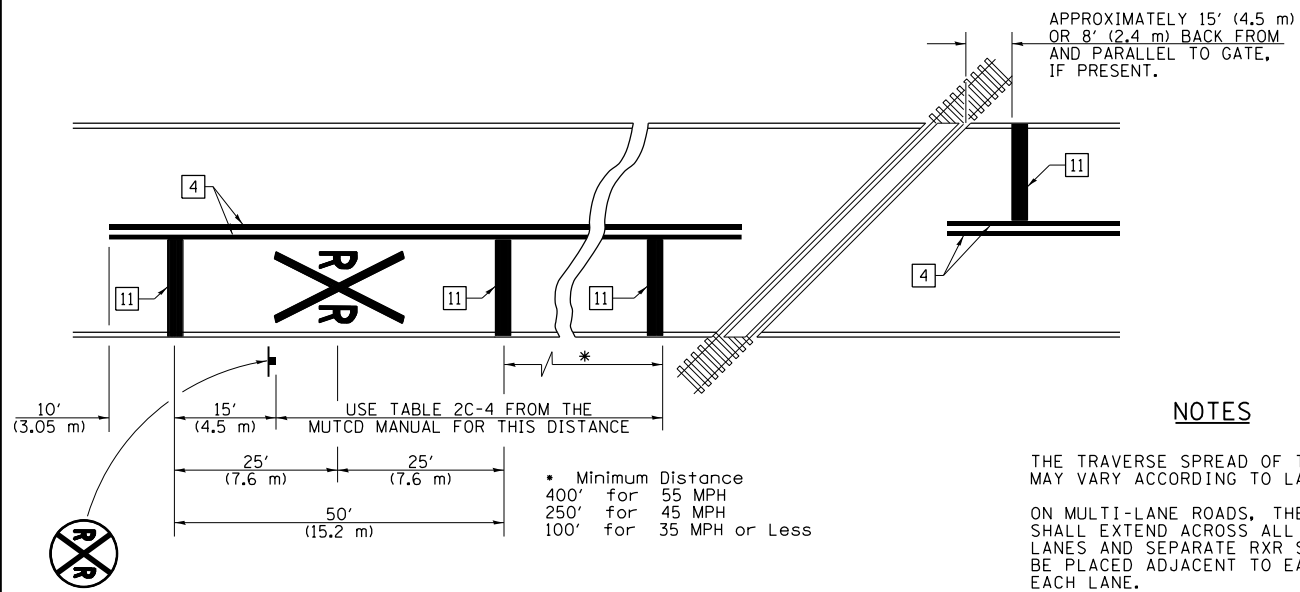
**STATE OF ILLINOIS  
DEPARTMENT OF TRANSPORTATION**

**PAVEMENT MARKING AND RAISED REFLECTIVE PAVEMENT MARKERS  
(RURAL & URBAN APPLICATIONS)**

SCALE: SHEET NO. 3 OF 4 SHEETS STA. TO STA.

F.A.P. RTE.	327, 116 SECTION	COUNTY	TOTAL SHEETS	SHEET NO.
	D7 HMA RESURF 2017-2	RICHLAND	14	13
ILLINOIS FED. AID PROJECT			CONTRACT NO. 74772	

PAVEMENT MARKINGS AT RAILROAD-HIGHWAY GRADE CROSSING



NOTES

THE TRAVERSE SPREAD OF THE "X" MAY VARY ACCORDING TO LANE WIDTH.

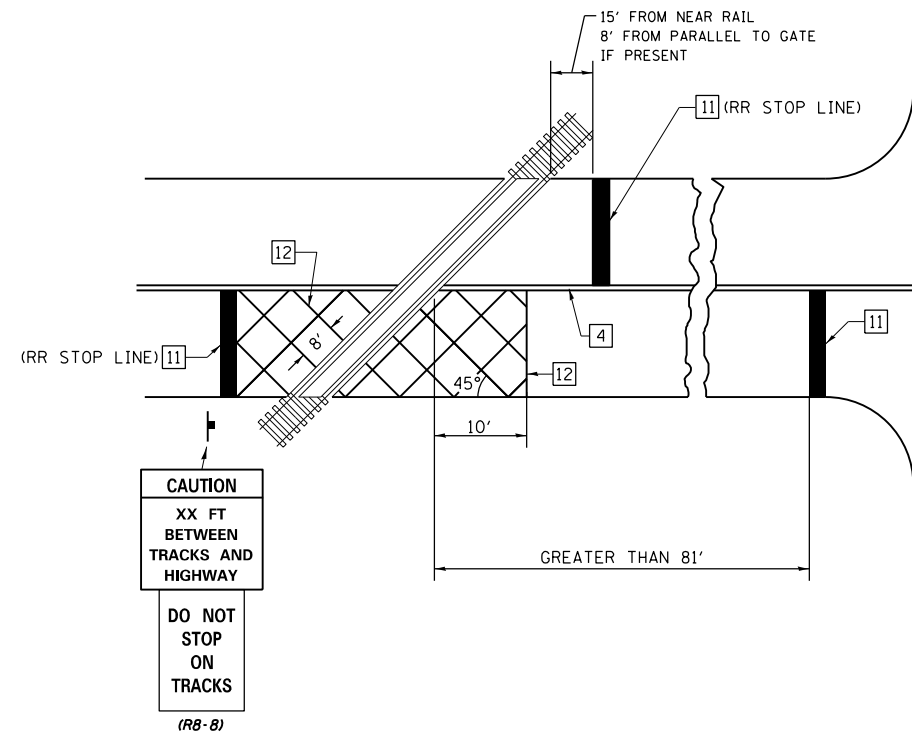
ON MULTI-LANE ROADS, THE STOP LINES SHALL EXTEND ACROSS ALL APPROACH LANES AND SEPARATE R X R SYMBOLS SHALL BE PLACED ADJACENT TO EACH OTHER IN EACH LANE.

WHEN THE PAVEMENT MARKING SYMBOL IS USED, A PORTION OF THE SYMBOL SHOULD BE LOCATED DIRECTLY ADJACENT TO THE ADVANCE WARNING SIGN (W10-1) AS PLACED BY TABLE II-1, CONDITION B OF THE MUTCD.

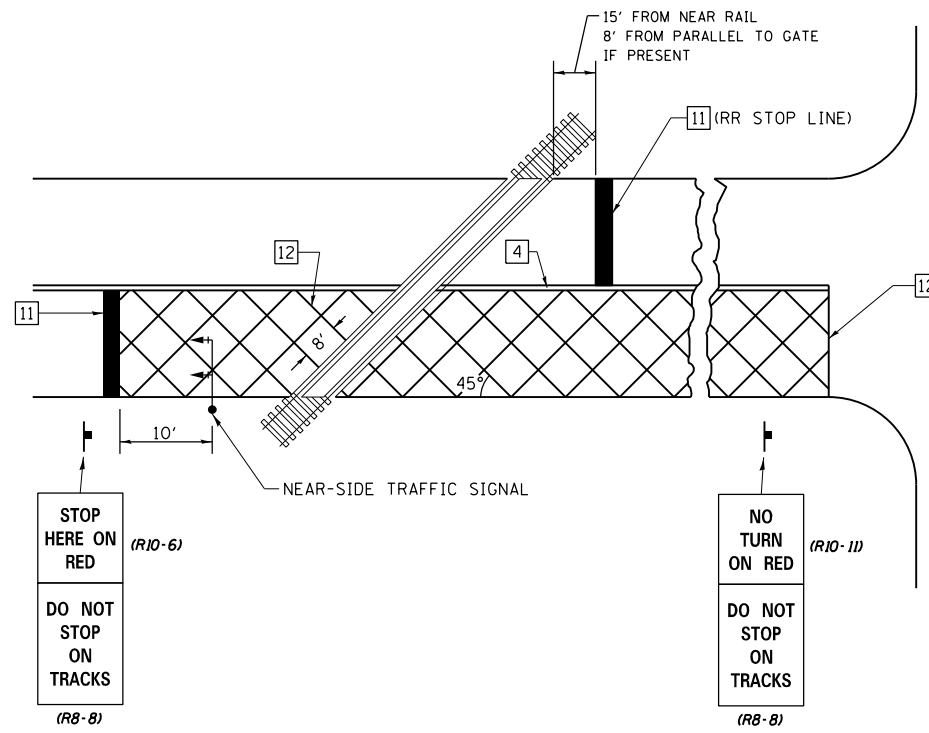
PAVEMENT MARKING LEGEND

- 1 4" (100) SKIP-DASH (YELLOW)
- 2 4" (100) SOLID (YELLOW)
- 3 12" (300) DIAGONAL (YELLOW)
- 4 4" (100) DOUBLE YELLOW (NARROW)
- 5 12" (300) SOLID WHITE
- 6 RESERVED
- 7 6" (150) SKIP-DASH (WHITE)
- 8 4" (100) SOLID (WHITE)
- 9 12" (300) DIAGONAL (WHITE)
- 10 6" (150) SOLID (WHITE)
- 11 24" (600) STOP BAR (WHITE)
- 12 8" (200) SOLID (WHITE)
- 13 4" (100) PARKING WHITE

RAILROAD CROSSING WITH INTERCONNECT ONLY



RAILROAD CROSSING WITH INTERCONNECT AND PRE-SIGNALS



GENERAL NOTES

- SUPPLEMENTAL PAVEMENT MARKINGS TO BE INSTALLED ONLY ON APPROACHES TO INTERSECTIONS CONTROLLED BY TRAFFIC SIGNALS WHICH ARE INTERCONNECTED WITH THE RAILROAD WARNING SIGNALS.
- EXTEND PAVEMENT MARKINGS TO THE INTERSECTION ONLY WHERE NEAR-SIDE TRAFFIC SIGNALS ARE USED.

SUPPLEMENTAL PAVEMENT MARKING TREATMENT FOR RAILROAD-HIGHWAY GRADE CROSSING

NOT TO SCALE

Note: All dimensions are in INCHES (millimeters) unless otherwise shown.

• 327 & 116

DISTRICT 7 DETAIL NO. 7800001

FILE NAME =	USER NAME = steffenmk	DESIGNED -	REVISED -
pw:\11\084EBIDINTEG.illinois.gov\PIWIDOT\Documents\DOT Offices\District 7\Projects\7472\DRAWING\CABsheets\D774772-sht-details.dwg		CHECKED -	REVISED -
		DATE -	REVISED -

STATE OF ILLINOIS  
DEPARTMENT OF TRANSPORTATION

PAVEMENT MARKING AND RAISED REFLECTIVE PAVEMENT MARKERS  
(RURAL & URBAN APPLICATIONS)

SCALE: SHEET NO. 4 OF 4 SHEETS STA. TO STA.

F.A.P. RTE.	327, 116 SECTION	COUNTY	TOTAL SHEETS	SHEET NO.
	D7 HMA RESURF 2017-2	RICHLAND	14	14
CONTRACT NO. 74772			ILLINOIS FED. AID PROJECT	