

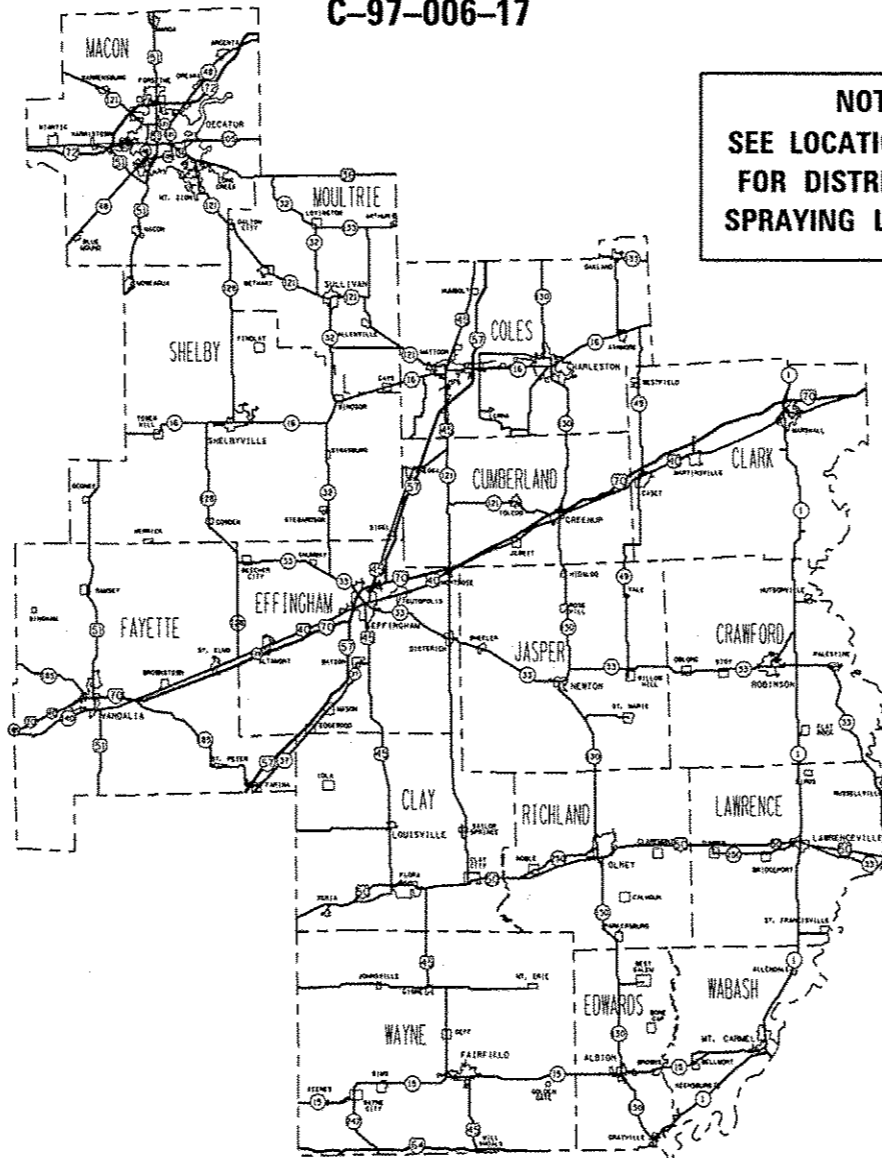
STATE OF ILLINOIS  
 DEPARTMENT OF TRANSPORTATION  
 DIVISION OF HIGHWAYS

**PROPOSED  
 HIGHWAY PLANS**

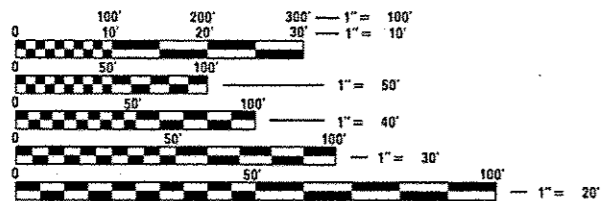
VARIOUS ROUTES  
 SECTION D7 WEED CONTROL SPRAYING 2017

WEED CONTROL SPRAYING  
 VARIOUS COUNTIES

C-97-006-17



**NOTE:  
 SEE LOCATION MAPS  
 FOR DISTRICT WIDE  
 SPRAYING LOCATIONS**



FULL SIZE PLANS HAVE BEEN PREPARED USING STANDARD ENGINEERING SCALES. REDUCED SIZED PLANS WILL NOT CONFORM TO STANDARD SCALES. IN MAKING MEASUREMENTS ON REDUCED PLANS, THE ABOVE SCALES MAY BE USED.

J.U.L.I.E.  
 JOINT UTILITY LOCATION INFORMATION FOR EXCAVATION  
 1-800-892-0123  
 OR 811

PROJECT ENGINEER: TOM RONAN  
 PROJECT MANAGER: TOM RONAN  
 PHONE: (217)-342-8320  
 CONTRACT NO. 74781

F.A. RTE.	SECTION	COUNTY	TOTAL SHEETS	SHEET NO.
VAR	*	VARIOUS	6	1
		ILLINOIS	CONTRACT NO. 74781	

\* DT WEED CONTROL SPRAYING 2017

D-97-003-17



LOCATION OF SECTION INDICATED THUS: —

STATE OF ILLINOIS  
 DEPARTMENT OF TRANSPORTATION

SUBMITTED October 19, 2016  
Jeffrey M. South  
 REGIONAL ENGINEER

Dec 9, 2016  
Maureen M. Addis, P.E.  
 ENGINEER OF DESIGN AND ENVIRONMENT

Dec 9, 2016  
Maureen M. Addis  
 DIRECTOR OF PROGRAM DEVELOPMENT

**PRINTED BY THE AUTHORITY  
 OF THE STATE OF ILLINOIS**



100 %  
STATE

7/18/2016

SUMMARY OF QUANTITIES				CONSTRUCTION TYPE CODE		
CODE NO	ITEM	UNIT	TOTAL QUANTITIES	0031		
67100100	MOBILIZATION	LSUM	1	1		
K0029636	ESCORT XP HERBICIDE	POUND	70	70		
X0325947	MILESTONE VM	GALLON	55	55		

• D7 WEED CONTROL SPRAYING 2017						
F.A. RTE.	SECTION	COUNTY	TOTAL SHEETS	SHEET NO.		
VAR			VARIOUS	6	3	
				CONTRACT NO.	74781	
[ILLINOIS] FED. AID PROJECT						

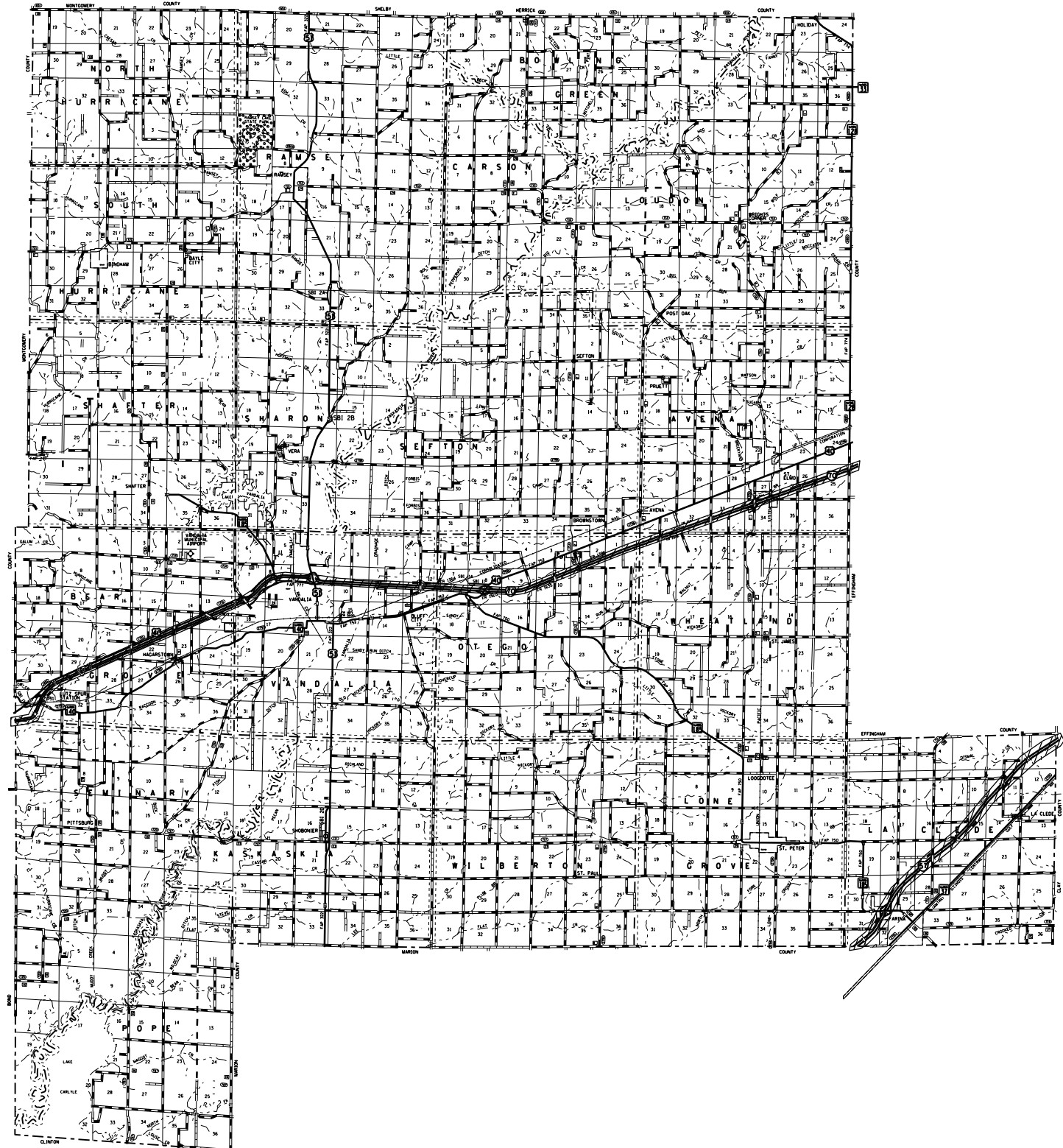
FILE NAME :	USER NAME :	DESIGNED :	REVISED :
pw\1\1084EBID\INTEG.illinois.gov\PWIDDT\Documents\100T Offices\District 7\Projects\74781\DRAWING\CAD\Sheet\0774781-shx-500.dgn	staffamk		
PLOT SCALE :	CHECKED :	DATE :	REVISED :
100.0000' / 1" = 100'		10/20/2016	

**STATE OF ILLINOIS  
DEPARTMENT OF TRANSPORTATION**

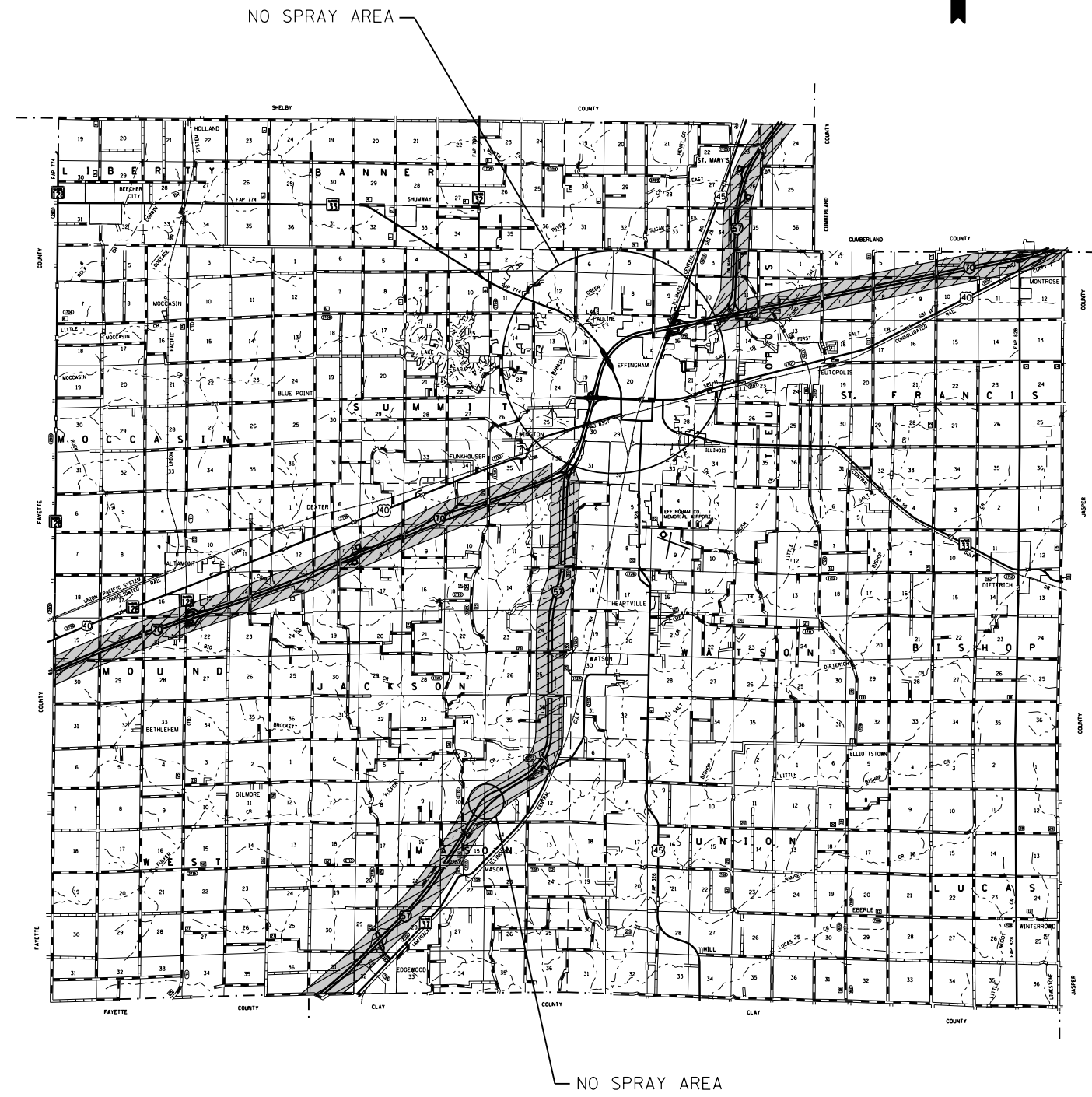
<b>SUMMARY OF QUANTITIES</b>		
SCALE: N/A	SHEET 1	OF 1 SHEETS
STA.		TO STA.



FAYETTE COUNTY LOCATION MAP



EFFINGHAM COUNTY LOCATION MAP



FILE NAME =	USER NAME = steffennk	DESIGNED -	REVISED -
pw\1\084EBIDINTEG\illinois.gov\PIDOT\Documents\DOT Offices\District 7\Projects\74781\Drawings\CAD\Sheets\0774781-sht-locations		CHECKED -	REVISED -
Default	PLOT DATE = 10/20/2016	DATE -	REVISED -

STATE OF ILLINOIS  
DEPARTMENT OF TRANSPORTATION

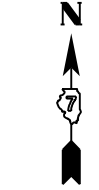
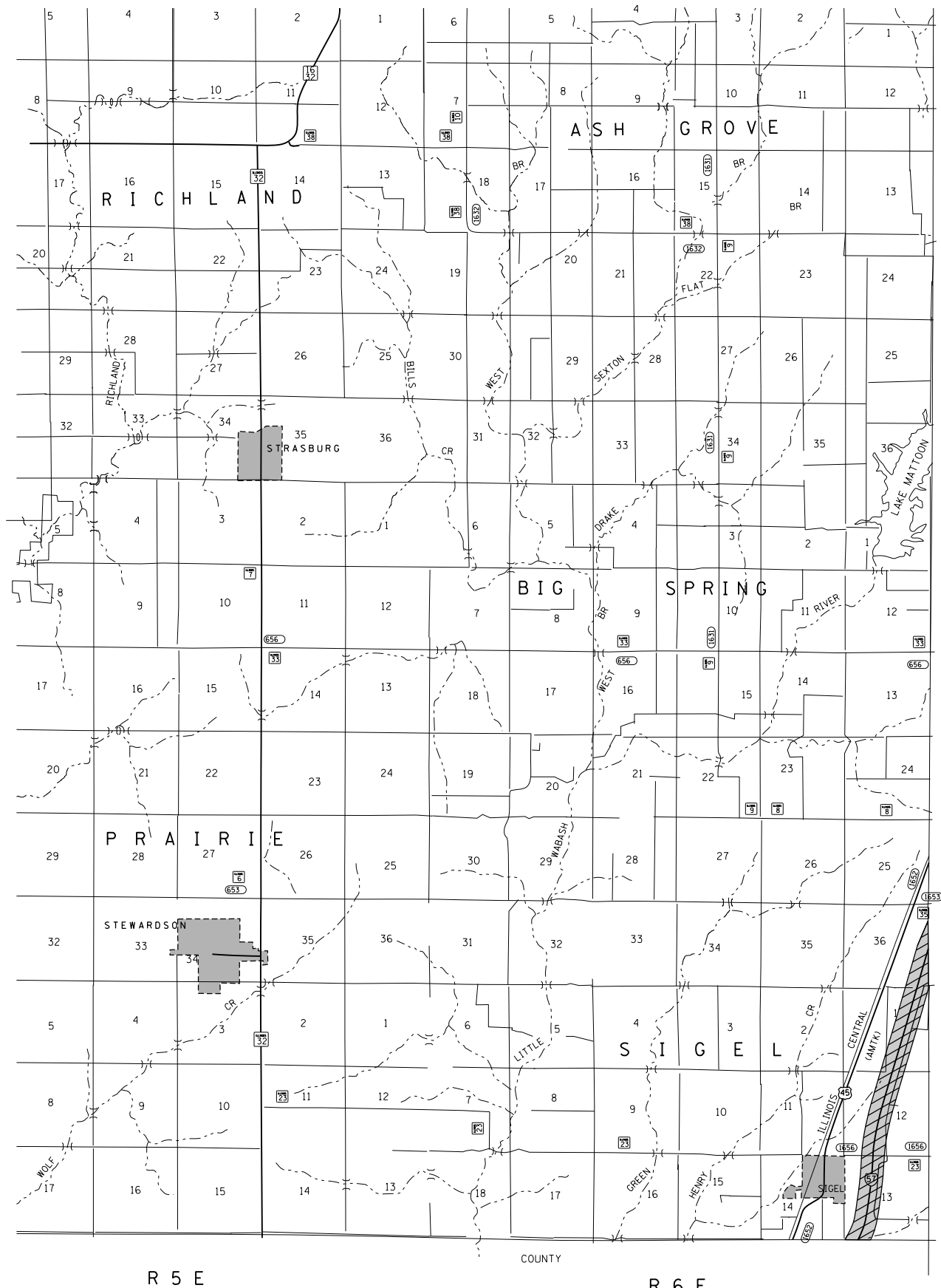
FAYETTE AND EFFINGHAM COUNTIES  
LOCATIONS MAPS

SCALE: N/A SHEET 1 OF 3 SHEETS STA. TO STA.

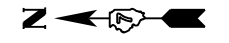
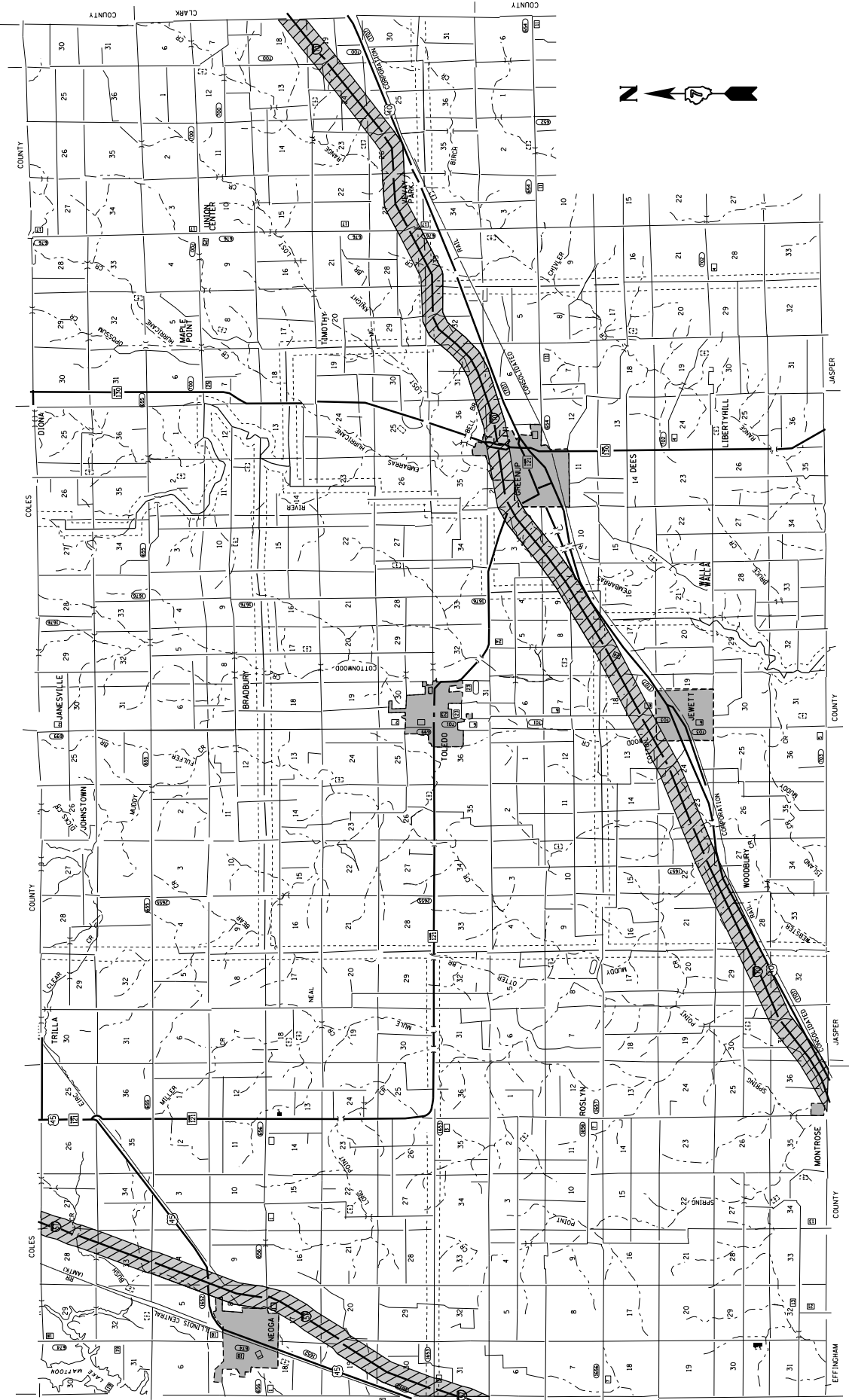
• D7 WEED CONTROL SPRAYING 2017

F.A. RTE.	SECTION	COUNTY	TOTAL SHEETS	SHEET NO.
VAR	*	VARIOUS	6	4
			CONTRACT NO. 74781	
ILLINOIS FED. AID PROJECT				

SHELBY COUNTY LOCATION MAP



CUMBERLAND COUNTY LOCATION MAP



FILE NAME =	USER NAME = steffenmk	DESIGNED -	REVISED -
pw:\IL\084EBIDINTEG\illinois.gov\PIDOT\Documents\DOT Offices\District 7\Projects\74781\Drawings\CAD\Sheets\0774781-sht-locations		DRAWN -	REVISED -
Default	PLOT SCALE = 100.0000' / in.	CHECKED -	REVISED -
	PLOT DATE = 10/20/2016	DATE -	REVISED -

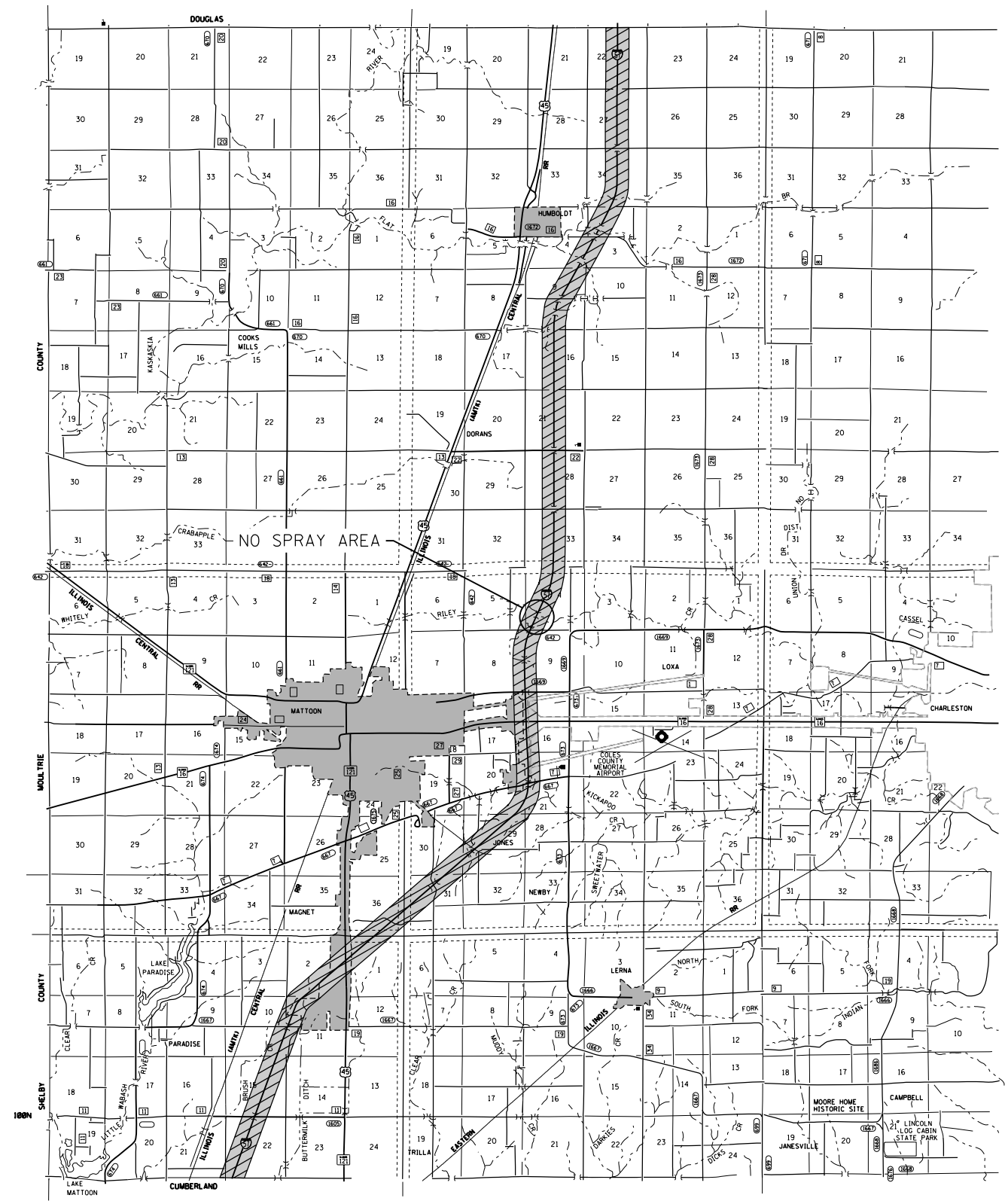
STATE OF ILLINOIS  
DEPARTMENT OF TRANSPORTATION

SHELBY AND CUMBERLAND COUNTIES  
LOCATIONS MAPS

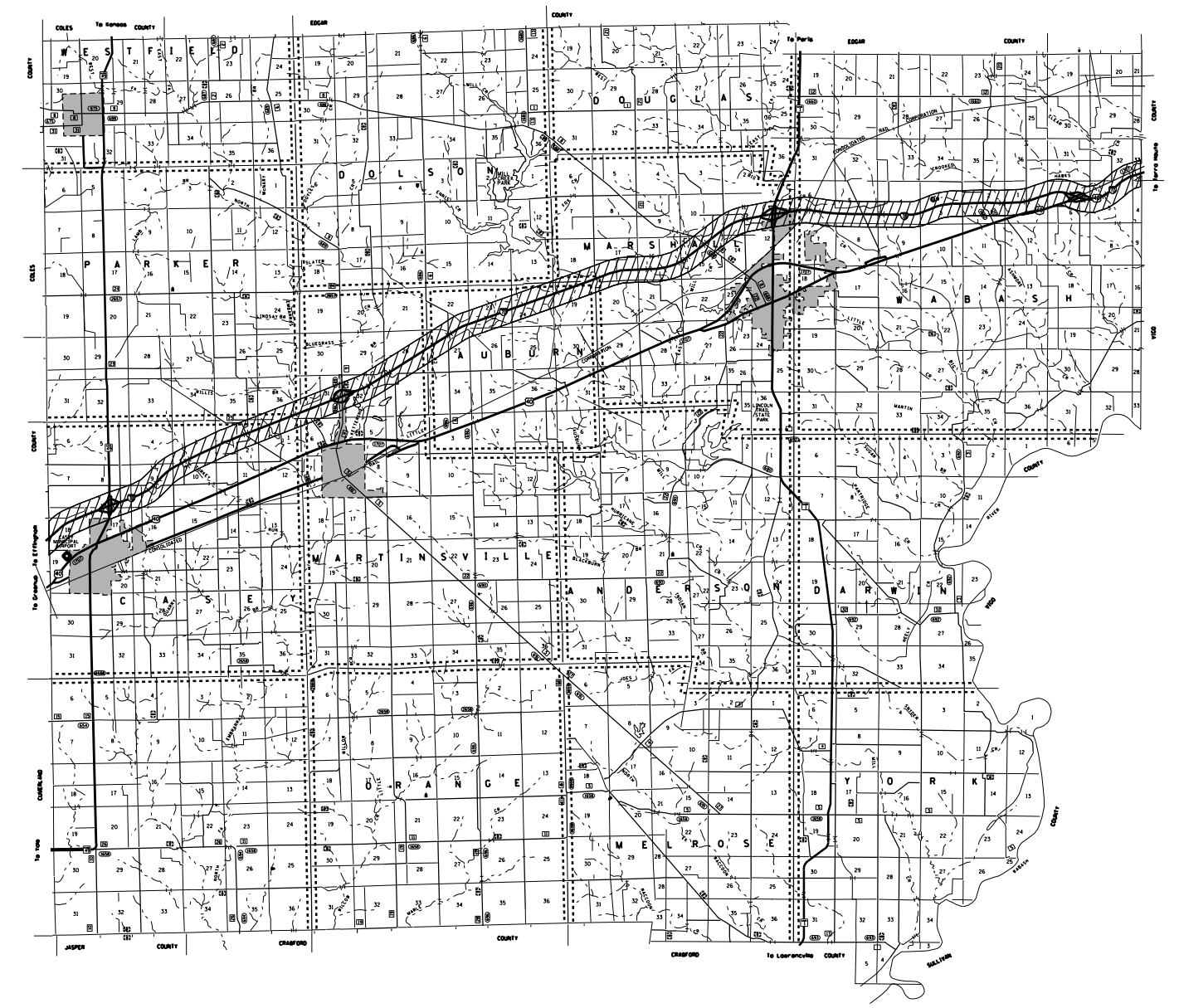
SCALE: N/A SHEET 2 OF 3 SHEETS STA. TO STA.

• D7 WEED CONTROL SPRAYING 2017			
F.A. RTE.	SECTION	COUNTY	TOTAL SHEETS
VAR	•	VARIETY	6
			SHEET NO. 5
			CONTRACT NO. 74781
ILLINOIS FED. AID PROJECT			

COLES COUNTY LOCATION MAP



CLARK COUNTY LOCATION MAP



FILE NAME =	USER NAME = steffennk	DESIGNED -	REVISED -
pw:\IL\084EBID\INTEG\illinois.gov\PI\DOT\Documents\DOT Offices\District 7\Projects\74781\Drawings\CAD\Sheets\0774781-sht-locations		CHECKED -	REVISED -
Default	PLOT SCALE = 100.0000' / in.	DATE -	REVISED -
	PLOT DATE = 10/20/2016		

STATE OF ILLINOIS  
DEPARTMENT OF TRANSPORTATION

COLES AND CLARK COUNTIES  
LOCATIONS MAPS

SCALE: N/A SHEET 3 OF 3 SHEETS STA. TO STA.

• D7 WEED CONTROL SPRAYING 2017

F.A. RE.	SECTION	COUNTY	TOTAL SHEETS	SHEET NO.
VAR	*	VARIOUS	6	6
			CONTRACT NO. 74781	
ILLINOIS FED. AID PROJECT				