

INDEX OF SHEETS

- 1 COVER SHEET
- 2 INDEX OF SHEETS, HIGHWAY STANDARDS, GENERAL NOTES & COMMITMENTS
- 3 SUMMARY OF QUANTITIES
- 4 TYPICAL SECTIONS
- 5 SCHEDULE OF QUANTITIES
- 6 LOCATION MAP
- 7 DETECTOR LOOP REPLACEMENT PLANS

HIGHWAY STANDARDS

- 000001-08 STANDARD SYMBOLS, ABBREVIATIONS AND PATTERNS
- 001001-02 AREAS OF REINFORCEMENT BARS
- 001006 DECIMAL OF AN INCH AND OF A FOOT
- 701101-05 OFF-ROAD OPERATIONS, MULTILANE, 15' (4.5 M) TO 24" (600 MM) FROM PAVEMENT EDGE
- 701106-02 OFF-ROAD OPERATIONS, MULTILANE, MORE THAN 15' (4.5 M) AWAY
- 701426-09 LANE CLOSURE, MULTILANE, INTERMITTENT OR MOVING OPERATION, FOR SPEEDS ≥ 45 MPH
- 701601-09 URBAN LANE CLOSURE, MULTILANE, 1W OR 2W WITH NONTRAVERSABLE MEDIAN
- 701701-10 URBAN LANE CLOSURE, MULTILANE INTERSECTION
- 701901-08 TRAFFIC CONTROL DEVICES
- 780001-05 TYPICAL PAVEMENT MARKINGS
- 781001-04 TYPICAL APPLICATIONS RAISED REFLECTIVE PAVEMENT MARKERS
- 420001-10 PAVEMENT JOINTS
- 442101-09 CLASS B PATCHES
- 886001-01 DETECTOR LOOP INSTALLATIONS
- 886006-01 TYPICAL LAYOUT FOR DETECTION LOOPS

GENERAL NOTES

1. UTILITIES KNOWN TO HAVE FACILITIES WITHIN THE PROJECT AREA ARE AS FOLLOWS:

	AERIAL	BURIED
AMEREN ILLINOIS (GAS & ELECTRIC)	X	X
AT&T ILLINOIS (COMMUNICATIONS)	X	X
CITY OF BELLEVILLE (SANITARY SEWER)		X
VILLAGE OF CAHOKIA (WATER & SANITARY SEWER)		X
CHARTER COMMUNICATIONS, INC. (CABLE)	X	X
ILLINOIS AMERICAN WATER COMPANY (WATER)		X
METRO EAST SANITARY DISTRICT (SANITARY SEWER)		X
2. NO SURVEY WAS PERFORMED FOR THIS PROJECT AND THE PLANS WERE CREATED USING MICROFILM.
3. THE PROPOSED PAVEMENT MARKING SHALL MATCH THE LOCATIONS OF THE EXISTING PAVEMENT MARKING, AS DIRECTED BY THE ENGINEER.
4. FOUR CHANGEABLE MESSAGE SIGNS SHALL BE REQUIRED FOR THIS PROJECT. THEY SHALL BE PLACED 2 WEEKS PRIOR TO ANY LANE CLOSURES. THE CHANGEABLE MESSAGE SIGNS SHALL BE PLACED ON IL 157, LAKE DR. AND FOLEY DR. FOR THE DURATION OF THE CONTRACT AT THE DIRECTION OF THE ENGINEER.
5. THE DEPARTMENT STRONGLY ENCOURAGES THE PRIME CONTRACTOR AND THEIR APPROVED SUB-CONTRACTORS TO HIRE MINORITY, WOMEN AND DISADVANTAGED INDIVIDUALS FROM ITS FEDERALLY FUNDED HIGHWAY CONSTRUCTION CAREERS TRAINING PROGRAM (HCCTP) TO HELP MEET WORKFORCE AND TRAINEE GOALS. THIS PROGRAM IS TRAINING MINORITIES, WOMEN AND DISADVANTAGED INDIVIDUALS IN HIGHWAY CONSTRUCTION-RELATED SKILLS, E.G., MATH FOR THE TRADES, JOB READINESS, TECHNICAL SKILLS COURSEWORK (CARPENTRY, CONCRETE FLATWORK, BLUEPRINT READING, SITE PLANS, SITE WORK, TOOLS USE, ETC.) AND OSHA 10 HOUR CERTIFICATION, TO PREPARE THEM FOR A CAREER IN THE HIGHWAY CONSTRUCTION TRADES. GRADUATES ARE WELL-TRAINED AND READY TO BECOME PRODUCTIVE ENTRY-LEVEL CONSTRUCTION WORKERS. CONTACT THE DISTRICT 8 EEO OFFICE AT 618-346-3360 AND/OR THE HCCTP COORDINATOR AT 618-874-6528 TO LEARN MORE ABOUT THE PROGRAM AND FOR ASSISTANCE IN MEETING WORKFORCE AND TRAINEE GOALS.

COMMITMENTS

NONE

REV. - MS

MODEL: Default
 FILE: M:\MS - P\11482620w_bentley.com_P\11482620w\Documents\DOT_Offices\District_8\Project\0876666\CAD\Sheet\0876666-ht-01.dgn

	USER NAME = Rahshun.Miller DESIGNED - DRAWN - PLOT SCALE = 100.0000' / in. PLOT DATE = 10/19/2022	DESIGNED - REVISIONS - CHECKED - DATE -		STATE OF ILLINOIS DEPARTMENT OF TRANSPORTATION	INDEX OF SHEETS, HIGHWAY STANDARDS, GENERAL NOTES, MIXTURE REQUIREMENTS, COMMITMENTS	F.A.P. RTE. 592 SECTION (32-1)PP-1	COUNTY ST. CLAIR	TOTAL SHEETS 7	SHEET NO. 2			
						SCALE: NTS	SHEET 1	OF 1	SHEETS	STA. TO STA.	CONTRACT NO. 76R66	ILLINOIS FED. AID PROJECT

CODE NO.	ITEM	UNIT	TOTAL QUANTITY	CONSTR. CODE
				100% STATE
				IL 157
				ROADWAY
				0006
				URBAN
44200050	WELDED WIRE REINFORCEMENT	SQ YD	2091	2091
44200994	CLASS B PATCHES, TYPE II, 12 INCH	SQ YD	99	99
44200998	CLASS B PATCHES, TYPE III, 12 INCH	SQ YD	72	72
44201000	CLASS B PATCHES, TYPE IV, 12 INCH	SQ YD	2019	2019
44201299	DOWEL BARS 1 1/2"	EACH	600	600
44213200	SAW CUTS	FOOT	4366	4366
44213204	TIE BARS 3/4"	EACH	505	505
67000400	ENGINEER'S FIELD OFFICE, TYPE A	CAL MO	2	2
67100100	MOBILIZATION	L SUM	1	1
70102630	TRAFFIC CONTROL AND PROTECTION, STANDARD 701601	L SUM	1	1
70102635	TRAFFIC CONTROL AND PROTECTION, STANDARD 701701	L SUM	1	1
70107025	CHANGEABLE MESSAGE SIGN	CAL DA	204	204
70300100	SHORT TERM PAVEMENT MARKING	FOOT	186	186
70300150	SHORT TERM PAVEMENT MARKING REMOVAL	SQ FT	62	62

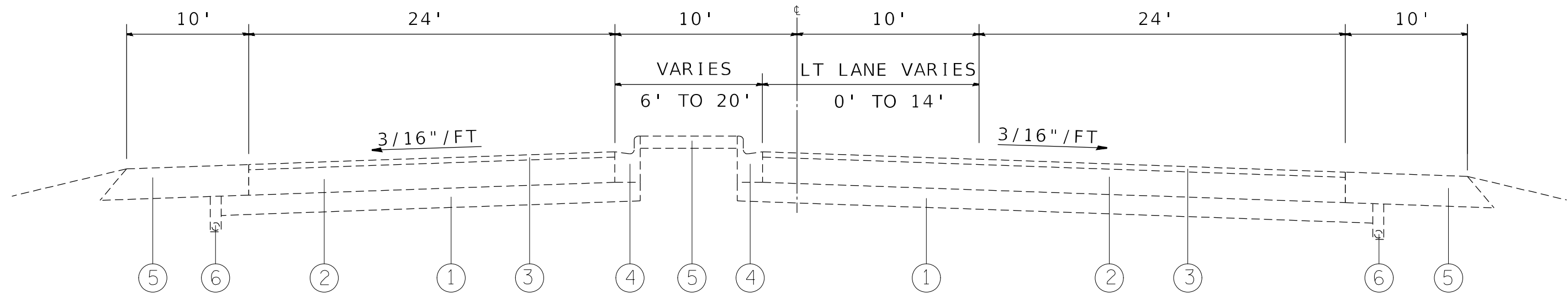
CODE NO.	ITEM	UNIT	TOTAL QUANTITY	CONSTR. CODE
				100% STATE
				IL 157
				ROADWAY
				0006
				URBAN
* 78001100	PAINT PAVEMENT MARKING - LETTERS AND SYMBOLS	SQ FT	78	78
* 78001110	PAINT PAVEMENT MARKING - LINE 4"	FOOT	3151	3151
* 78001140	PAINT PAVEMENT MARKING - LINE 8"	FOOT	152	152
* 78001180	PAINT PAVEMENT MARKING - LINE 24"	FOOT	113	113
* 78100100	RAISED REFLECTIVE PAVEMENT MARKER	EACH	32	32
78300200	RAISED REFLECTIVE PAVEMENT MARKER REMOVAL	EACH	32	32
* 88600600	DETECTOR LOOP REPLACEMENT	FOOT	1092	1092

* SPECIALTY ITEM

REV. - MS

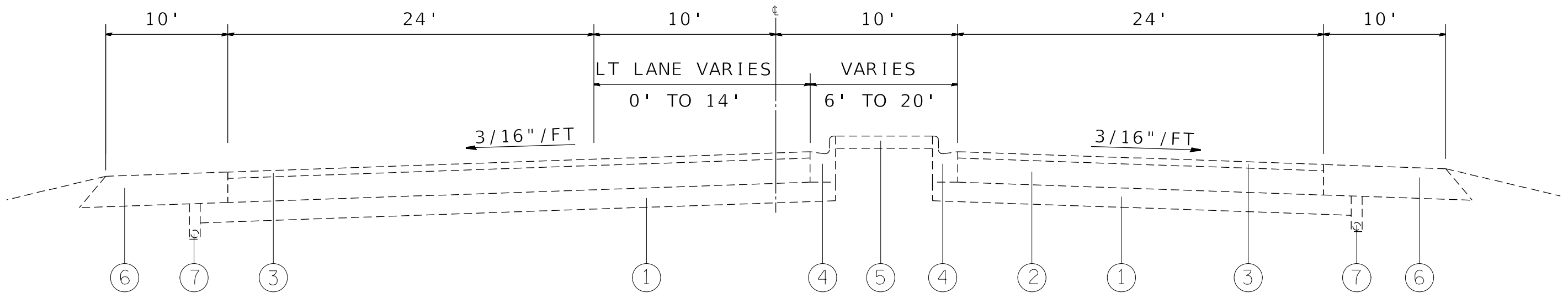
MODEL: D:\default...
 FILE: M:\as...
 PROJECT: 0876666\CD\Drawings\DOT_Offices\Dir\CD...

USER NAME = Rahshun.Miller	DESIGNED -	REVISED -	STATE OF ILLINOIS DEPARTMENT OF TRANSPORTATION	SUMMARY OF QUANTITIES				F.A.P. RTE.	SECTION	COUNTY	TOTAL SHEETS	SHEET NO.
PLOT SCALE = 100.0000' / in.	DRAWN -	REVISED -						592	(32-1)PP-1	ST. CLAIR	7	3
PLOT DATE = 10/19/2022	CHECKED -	REVISED -		SCALE: NTS	SHEET 1 OF 1 SHEETS	STA.	TO STA.	ILLINOIS FED. AID PROJECT		CONTRACT NO. 76R66		
	DATE -	REVISED -										



EXISTING TYPICAL SECTION

STA. 0+00 TO STA. 0+43



EXISTING TYPICAL SECTION

STA. 0+43 TO STA. 5+20

LEGEND

- ① EXISTING SUB-BASE, 4"
- ② EXISTING P.C.C. PAVEMENT 10"
- ③ EXISTING HMA OVERLAY 1 1/2"
- ④ EXISTING CURB & GUTTER TYPE M6.12
- ⑤ EXISTING MEDIAN AREA
- ⑥ EXISTING HOT MIX ASPHALT SHOULDER
- ⑦ EXISTING UNDERDRAINS

MODEL: Default
 FILE NAME: p:\ultra-cw-bead\p\com\p\INDOT\Documents\DOT_Offices\Dir\dr. 8\Project\087666\CADD\31\CAD\sheet\087666-shc1\typical.dwg
 PLOT DATE = 10/19/2022

USER NAME = Rahshun, Miller	DESIGNED -	REVISED -
PLOT SCALE = 100,0000' / in.	DRAWN -	REVISED -
PLOT DATE = 10/19/2022	CHECKED -	REVISED -
	DATE -	REVISED -

STATE OF ILLINOIS
DEPARTMENT OF TRANSPORTATION

TYPICAL SECTION	
SCALE: NTS	SHEET 1 OF 1 SHEETS
STA. _____	TO STA. _____

F.A.P. RTE. 592	SECTION (32-1)PP-1	COUNTY ST CLAIR	TOTAL SHEETS 7	SHEET NO. 4
CONTRACT NO. 76R66			ILLINOIS FED. AID PROJECT	

CLASS B PATCHING SCHEDULE

STATION	LANE	DIMENSIONS		CLASS B PATCHES, 12 INCH			SAW CUTS FOOT	DOWEL BARS EACH	TIE BARS EACH	WELDED WIRE REINFORCEMENT SQ YD		
		LENGTH	WIDTH	TY-II	TY-III	TY-IV						
		FOOT	FOOT	SQ YD	SQ YD	SQ YD						
SB	0+00	N OF LAKE DR										
SB	0+00	PL	6.00	12.00	8.0		48	20				
SB	0+00	DL	43.00	12.00		57.3	122	20	14	57.3		
SB	0+32	PL	393.00	12.00		524.0	822	20	131	524.0		
SB	2+17	DL	23.00	12.00		30.7	82	20	8	30.7		
SB	2+64	DL	80.00	12.00		106.7	196	20	27	106.7		
SB	3+67	DL	6.00	12.00	8.0		48	20				
SB	4+12	DL	6.00	12.00	8.0		48	20				
SB	4+96	PL	10.00	12.00	13.3		56	20				
SB	5+17	PL	13.00	12.00		17.3	62	20		17.3		
NB	5+20	JOINT S OF LAKE/FOLEY DR										
NB	5+20	PL	10.00	12.00	13.3		56	20				
NB	5+11	PL	7.00	12.00	9.3		50	20				
NB	4+46	DL	62.00	12.00		82.7	160	20	21	82.7		
NB	3+68	DL	67.00	12.00		89.3	170	20	22	89.3		
NB	3+49	PL	86.00	12.00		114.7	208	20	29	114.7		
NB	3+18	LTL	64.00	12.00		85.3	164	20	21	85.3		
NB	3+18	PL	8.00	12.00	10.7		52	20				
NB	2+95	DL	52.00	12.00		69.3	140	20	17	69.3		
NB	2+67	PL	9.00	12.00	12.0		54	20				
NB	2+36	PL	21.00	12.00		28.0	78	20	7	28.0		
NB	2+06	LTL	15.00	12.00		20.0	66	20		20.0		
NB	2+06	PL	21.00	12.00		28.0	78	20	7	28.0		
NB	1+55	DL	17.00	12.00		22.7	70	20		22.7		
NB	0+30	LTL	65.00	12.00		86.7	166	20	22	86.7		
NB	0+30	DL	107.00	12.00		142.7	250	20	36	142.7		
NB	0+30	PL	178.00	12.00		237.3	392	20	59	237.3		
SUB-TOTAL						82.7	60.0	1682.7	3638	500	421	1742.7
ANTICIPATED FAILURES 20%						16.5	12.0	336.5	727.6	100.0	84.1	348.5
ROUNDED TOTAL						99	72	2019	4366	600	505	2091

PAVEMENT MARKING SCHEDULE

LOCATION	QUADRANT	PAINT PAVEMENT MARKING						SHORT TERM PAVEMENT MARKING (ONE LIFT) FOOT	SHORT TERM PAVEMENT MARKING REMOVAL SQ FT	RAISED REFLECTIVE PAVEMENT MARKER REMOVAL EACH	RAISED REFLECTIVE PAVEMENT MARKER ONE-WAY CRYSTAL EACH
		4"	4"	4"	8"	24"	LETTERS				
		YELLOW	WHITE	WHITE	YELLOW	WHITE	&				
		SOLID	SOLID	SKIP DASH	SOLID	SOLID	SYMBOLS				
		FOOT	FOOT	FOOT	FOOT	FOOT	SQ FT	FOOT	SQ FT	EACH	EACH
IL ROUTE 157 AT LAKE/FOLEY DR.	IL ROUTE 157										
	NW	100	235	25	34	56	31.2	26	9	5	5
	NE	100	146	25	42			17	6	2	2
	SW	460	495	115	42			54	18	7	7
	SE	460	875	115	34	57	46.8	89	30	18	18
SUB-TOTAL		1120	1751	280							
TOTAL			3151		152	113	78	186	62	32	32

MODEL: Default
FILE: \\miller\pwworking\miller\project\10876866\CADD\sheet\0876866-sh-c-schedule.dgn

USER NAME = Rahshun, Miller	DESIGNED -	REVISED -
	DRAWN -	REVISED -
PLOT SCALE = 100,0000' / in.	CHECKED -	REVISED -
PLOT DATE = 11/14/2022	DATE -	REVISED -

**STATE OF ILLINOIS
DEPARTMENT OF TRANSPORTATION**

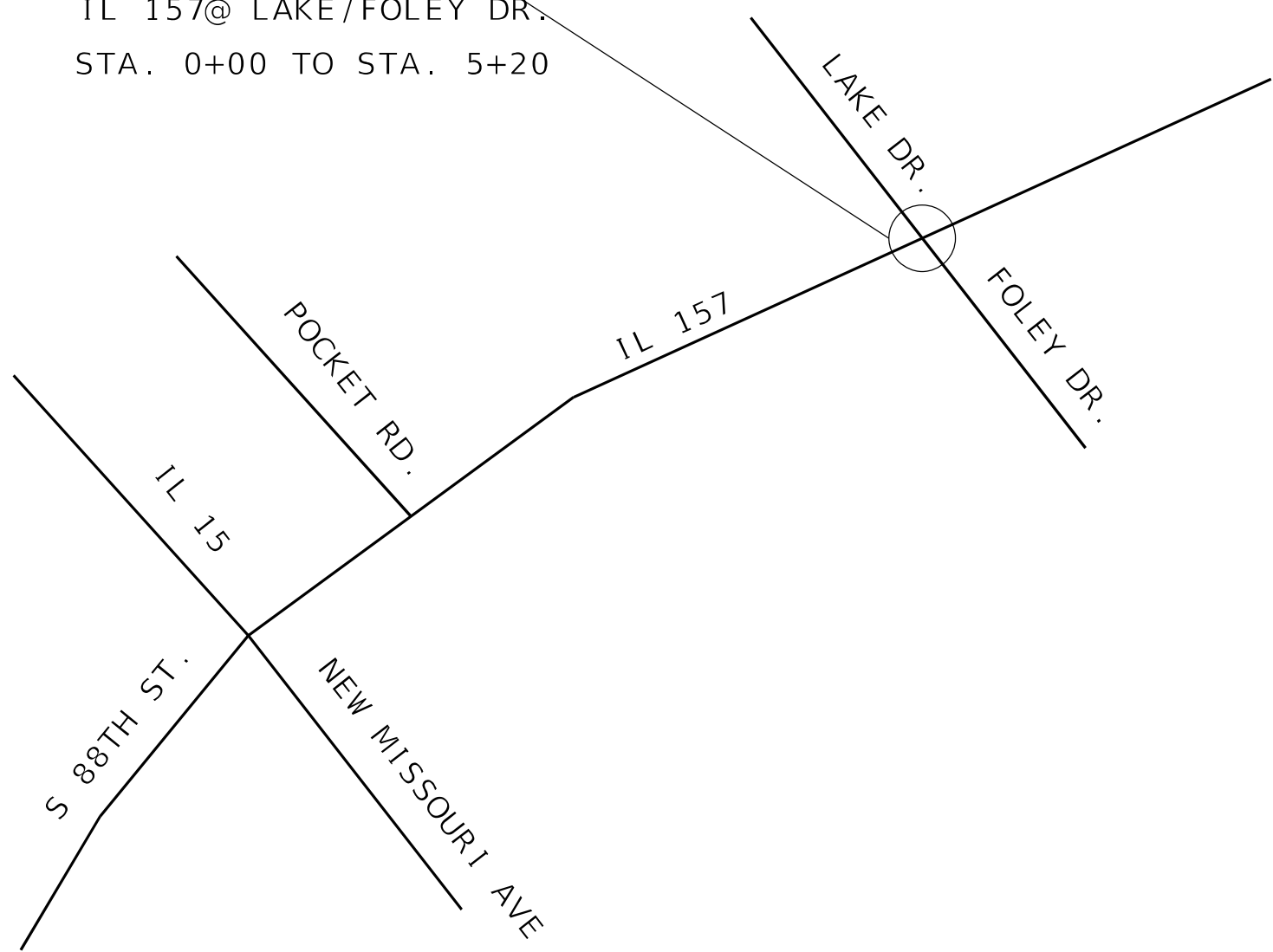
SCHEDULE OF QUANTITIES

SCALE: NTS SHEET 1 OF 1 SHEETS STA. TO STA.

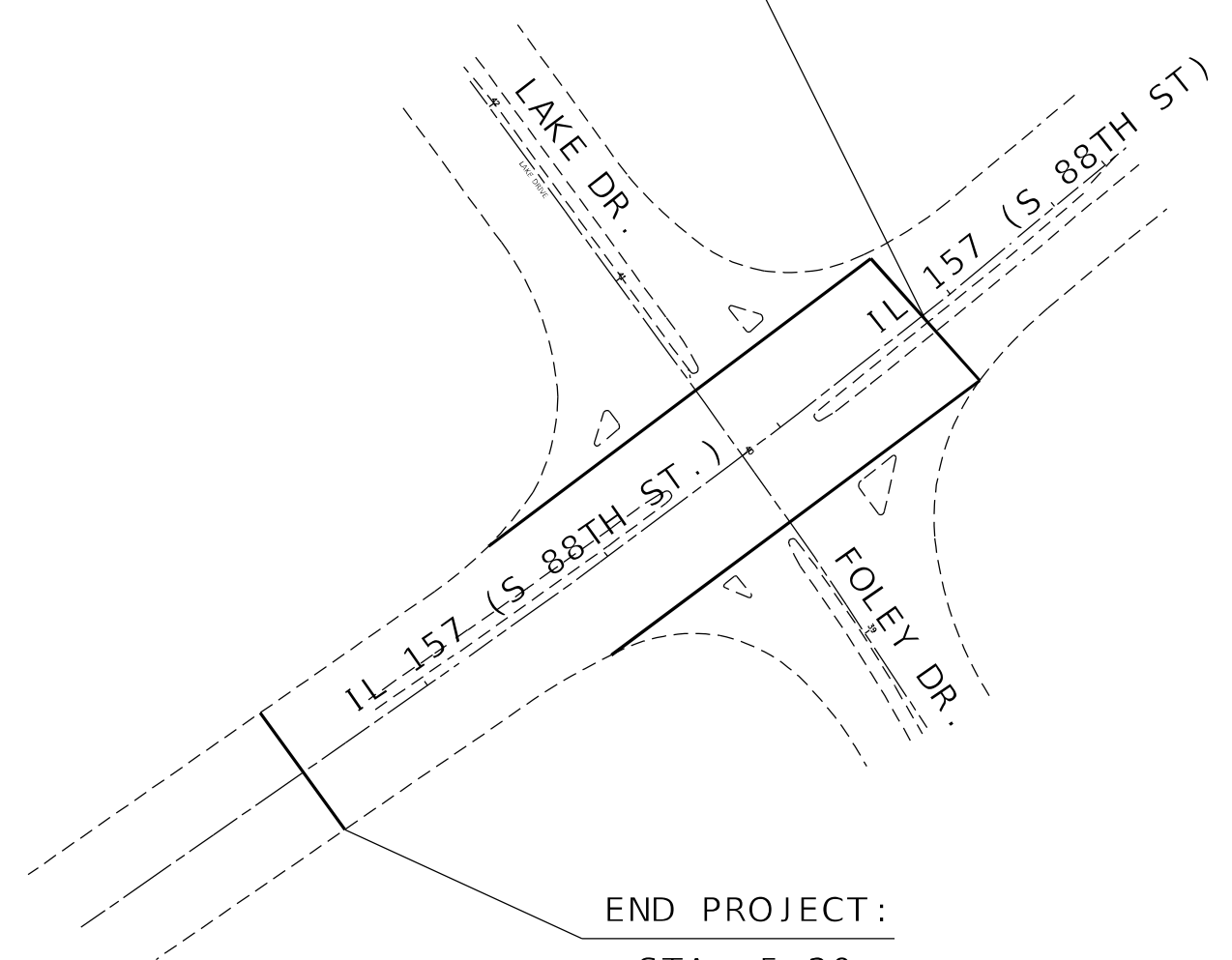
F.A.P. RTE.	SECTION	COUNTY	TOTAL SHEETS	SHEET NO.
592	(32-1)PP-1	ST. CLAIR	7	5
CONTRACT NO. 76R66				
ILLINOIS		FED. AID PROJECT		



PROJECT LOCATION:
 IL 157@ LAKE/FOLEY DR.
 STA. 0+00 TO STA. 5+20



BEGIN PROJECT:
 STA. 0+00



END PROJECT:
 STA. 5+20
 (EXISTING JOINT)

MODEL: Default
 FILE: MAPLE_2022\11\11\DOT Documents\11DOT Office\Dir\dr. 8\Project\0876666\CADD\Sheet\11DOT\0876666-shs-schedule.dwg

USER NAME = Rahshun,Miller	DESIGNED -	REVISED -
	DRAWN -	REVISED -
PLOT SCALE = 100,0000 ' / in.	CHECKED -	REVISED -
PLOT DATE = 10/19/2022	DATE -	REVISED -

STATE OF ILLINOIS
DEPARTMENT OF TRANSPORTATION

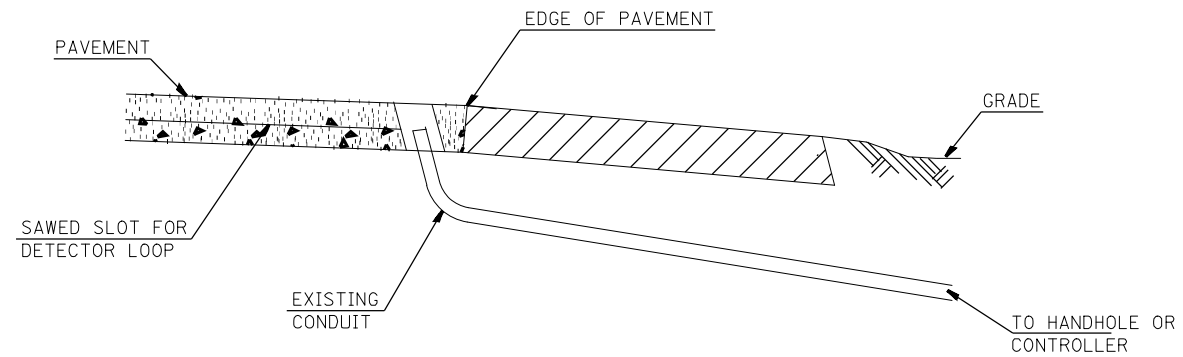
LOCATION MAP			
SCALE: NTS	SHEET 1	OF 1 SHEETS	STA. TO STA.

F.A.P. RTE.	SECTION	COUNTY	TOTAL SHEETS	SHEET NO.
592	(32-1)PP-1	ST. CLAIR	7	6
CONTRACT NO. 76R66			ILLINOIS FED. AID PROJECT	

PAY CODE NO.	ITEM	QUANTITY	TOTAL
88600600	DETECTOR LOOP REPLACEMENT	FOOT	1092

LOOP#	PHASE#	LOOP SIZE (FT. X FT.)	REQUIRED # OF TURNS	CALCULATED INDUCTANCE MICROHENRIES	CALCULATED RESISTANCE OHMS
1. SEB CDD 1	8	6' x 3'	7	510.79	3.71
2. SEB CDD 2	8	6' x 3'	6	508.37	3.66
3. SEB LT CD	3	6' x 50'(Q)	3-6-3	830.44	2.80
4. SEB THRU 1 CD	8	6' x 50'(Q)	3-6-3	857.08	3.21
5. SEB THRU 2 CD	8	6' x 50'(Q)	3-6-3	854.20	3.14
6. SEB RT CD	8	6' x 50'(Q)	3-6-3	843.20	2.99
7. NEB CDD 1	2	6' x 3'	6	371.04	3.00
8. NEB CDD 2	2	6' x 3'	6	376.32	3.12
9. NEB LT CD	9	6' x 50'(Q)	3-6-3	828.90	2.87
10. NEB THRU 1 CD	2	6' x 50'(Q)	3-6-3	825.60	2.49
11. NEB THRU 2 CD	2	6' x 50'(Q)	3-6-3	827.74	2.43
12. NEB RT CD	2	6' x 50'(Q)	3-6-3	821.42	2.40
13. NWB CDD 1	4	6' x 3'	6	347.28	2.48
14. NWB CDD 2	4	6' x 3'	6	348.30	2.42
15. NWB LT CD	7	6' x 50'(Q)	3-6-3	813.94	2.23
16. NWB THRU 1 CD	4	6' x 50'(Q)	3-6-3	806.90	2.07
17. NWB THRU 2 CD	4	6' x 50'(Q)	3-6-3	800.38	1.99
18. NWB RT CD	4	6' x 50'(Q)	3-6-3	796.34	1.83
19. SWB CDD 1	6	6' x 3'	0	338.30	2.80
20. SWB CDD 2	6	6' x 3'	6	313.62	1.70
21. SWB LT CD	1	6' x 50'(Q)	3-6-3	830.66	2.61
22. SWB THRU 1 CD	6	6' x 50'(Q)	3-6-3	827.14	2.53
23. SWB THRU 2 CD	1	6' x 50'(Q)	3-6-3	824.28	2.46
24. SWB RT CD	1	6' x 50'(Q)	3-6-3	822.96	2.43

THE ABOVE VALUES ARE CALCULATED OF COMBINED LOOP AND LEAD-IN INDUCTANCE AND RESISTANCE. ACTUAL MEASURED VALUES SHOULD BE WITHIN +/- 20% OF THESE VALUES.
 Q=QUADRAPOLE * =SEE DETAIL "A"

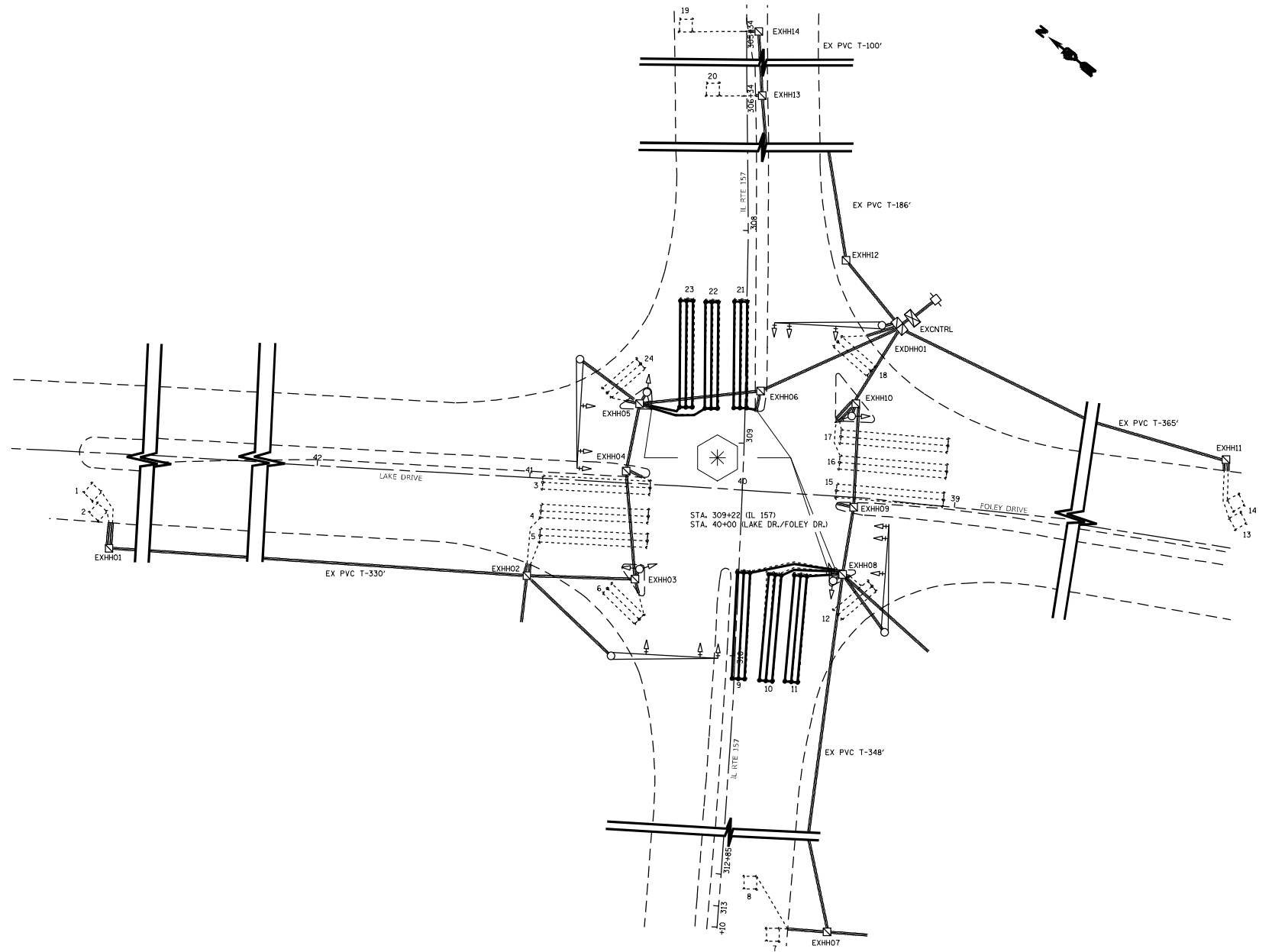


DETAIL A
(NO SCALE)

RE-USE EXISTING DETECTOR LOOP LEAD-IN CONDUIT

- 1 DRILL OUT PAVEMENT SEALANT AND CLEAN EXISTING CONDUIT.
- 2 REMOVE EXISTING CABLE TO HANDHOLE.
- 3 INSTALL LOOP LEAD-IN CONDUCTORS IN CONDUIT.
- 4 SPLICE NEW DETECTOR LOOP LEAD-IN CONDUCTORS TO EXISTING LEAD-IN CABLE IN HANDHOLE.
- 5 FILL HOLE WITH APPROVED SEALER. PREVENT SEALER FROM ENTERING INTO CONDUIT.

NOT A PAY ITEM. THE COST OF THIS WORK SHALL BE INCLUDED IN THE PAY ITEM "DETECTOR LOOP REPLACEMENT"
 THE CONTRACTOR WILL BE RESPONSIBLE FOR PROTECTING THE EXISTING CONDUIT DURING CONSTRUCTION. SHOULD ANY DAMAGE TO THE CONDUIT OCCUR DUE TO THE OPERATIONS, REPAIR SHALL BE MADE TO THE SATISFACTION OF THE ENGINEER AND WILL BE DONE AT THE CONTRACTOR'S EXPENSE.



MODEL: Default
 FILE: 3dmodel.pwdet-loop-replace.dwg
 PROJECT: D:\Projects\10876866\CADD\10876866\10876866.dwg
 USER: rahshun.miller

USER NAME = Rahshun,Miller	DESIGNED -	REVISED -
PLOT SCALE = 80,0000 * 1/ in.	CHECKED -	REVISED -
PLOT DATE = 10/19/2022	DATE -	REVISED -

**STATE OF ILLINOIS
DEPARTMENT OF TRANSPORTATION**

**SCHEDULE OF QUANTITIES AND DETAIL W/
IL 157 & LAKE DR./FOLEY DR.
DETECTOR LOOP REPLACEMENT PLAN**

SCALE: NTS SHEET 1 OF 1 SHEETS STA. TO STA.

F.A.P. RTE.	SECTION	COUNTY	TOTAL SHEETS	SHEET NO.
594	(32-1)PP-1	ST. CLAIR	7	7
CONTRACT NO. 76R66				
ILLINOIS FED. AID PROJECT				