

STATE OF ILLINOIS
DEPARTMENT OF TRANSPORTATION

| F.A.P. RTE | SECTION | COUNTY | TOTAL SHEETS | SHEET NO. |
|------------|--------------------------|-----------|--------------------|-----------|
| 726 | D9 BRIDGE OVERLAY 2023-6 | JEFFERSON | 18 | 1 |
| | | ILLINOIS | CONTRACT NO. 78963 | |

FOR INDEX OF SHEETS, SEE SHEET NO. 3
FOR SUMMARY OF QUANTITIES, SEE SHEET NO. 4-6

**PROPOSED
HIGHWAY PLANS**

FAP ROUTE 726 (IL 148)
D9 BRIDGE OVERLAY 2023-6
PROJECT HBFP-IHWC(588)
BRIDGE OVERLAY
JEFFERSON COUNTY

C-99-078-22

TRAFFIC DATA

SN 041-0096 : 2021 ADT = 3,250
WITH 6.5% TRUCKS

TOWNSHIPS

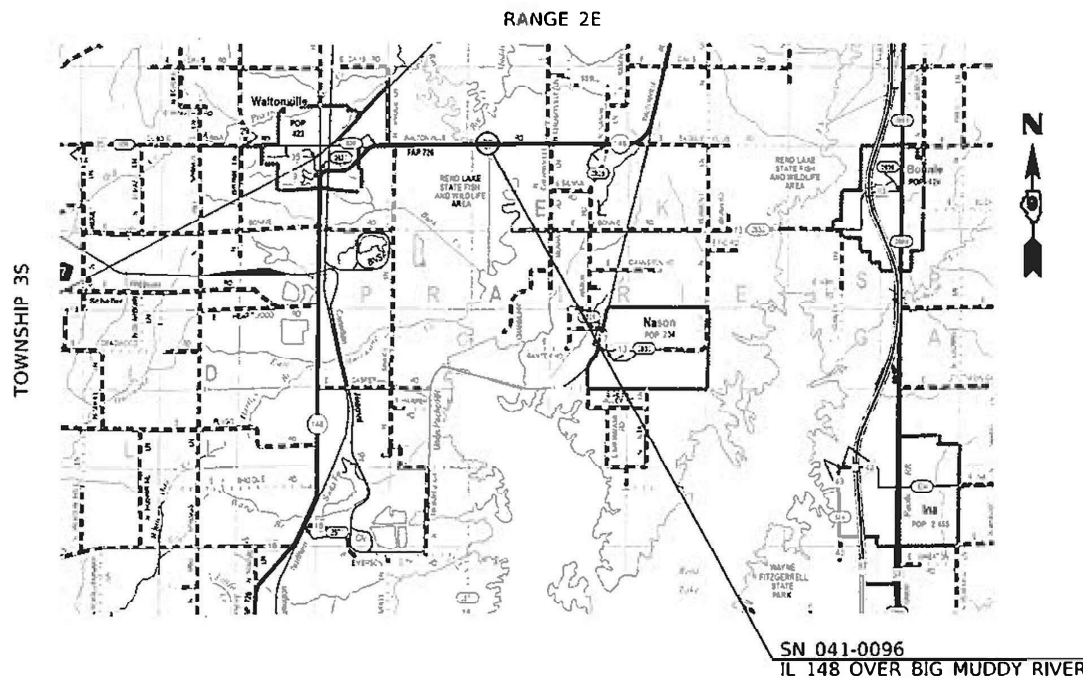
SN 041-0096 : ELK PRAIRIE

DESIGN DESIGNATION : N/A
COORDINATE SYSTEM : STATE PLANE ZONE - ILLINOIS EAST
POSTED SPEED : 55 MPH

J.U.L.I.E.
JOINT UTILITY LOCATION INFORMATION FOR EXCAVATION
1-800-892-0123
OR 811

PROJECT ENGINEER GRANT DETERDING
PROJECT DESIGNER DEREK SNIDER

CONTRACT NO. 78963



GROSS LENGTH = 746.7 FT. = 0.122 MILES
NET LENGTH = 746.7 FT. = 0.122 MILES



STATE OF ILLINOIS
DEPARTMENT OF TRANSPORTATION

SUBMITTED Oct 3 20 22
Kirk H. Brown REGION FIVE ENGINEER
December 9, 2022
Stephen A. Etkin
ENGINEER OF DESIGN AND ENVIRONMENT
December 9, 2022
Stephen M. Smith
DIRECTOR OF HIGHWAYS PROJECT IMPLEMENTATION

**PRINTED BY THE AUTHORITY
OF THE STATE OF ILLINOIS**

Prepared By: Charles Stein
DISTRICT STUDIES & PLANS ENGINEER

Examined By: Nancy Lee
DISTRICT LAND ACQUISITION ENGINEER

Examined By: Car Nelson
DISTRICT PROGRAM DEVELOPMENT ENGINEER

Examined By: [Signature]
DISTRICT OPERATIONS ENGINEER

Examined By: Doris J. [Signature]
DISTRICT PROJECT IMPLEMENTATION ENGINEER

Examined By: Doris J. [Signature]
DISTRICT CONSTRUCTION ENGINEER

Examined By: Ann W. [Signature]
DISTRICT MATERIALS ENGINEER

MODEL: \\SHP001\NAME\...
FILE NAME: SELEL

| | | |
|----------------------|------------|-----------|
| USER NAME = SUSERS | DESIGNED - | REVISED - |
| PLOT SCALE = SSCALES | DRAWN - | REVISED - |
| PLOT DATE = SUATES | CHECKED - | REVISED - |
| | DATE - | REVISED - |

**STATE OF ILLINOIS
DEPARTMENT OF TRANSPORTATION**

| SIGNATURES | | | |
|------------|-------|-----------|--------------|
| SCALE: | SHEET | OF SHEETS | STA. TO STA. |

| F.A. RTE. | SECTION | COUNTY | TOTAL SHEETS | SHEET NO. |
|---------------------------|--------------------------|-----------|--------------|-----------|
| 726 | D9 BRIDGE OVERLAY 2023-6 | JEFFERSON | 18 | 2 |
| CONTRACT NO. 78963 | | | | |
| ILLINOIS FED. AID PROJECT | | | | |

INDEX OF SHEETS

| | |
|------|---|
| 1 | COVER SHEET |
| 2 | SIGNATURES |
| 3 | GENERAL NOTES, INDEX OF SHEETS, AND STANDARDS |
| 4-6 | SUMMARY OF QUANTITIES |
| 7-18 | SN 041-0096 REPAIR DETAILS |

GENERAL NOTES

FACTORS USED FOR ESTIMATING PLAN QUANTITIES ARE AS FOLLOWS AND SHALL NOT BE USED FOR THE BASIS OF FINAL QUANTITIES:
 ALL HOT MIX ASPHALT 2.016 TONS/CU YD
 COMMITMENTS: NONE

STANDARDS

| | |
|-----------|--|
| 000001-08 | STANDARD SYMBOLS, ABBREVIATIONS AND PATTERNS |
| 001001-02 | AREAS OF REINFORCEMENT BARS |
| 001006 | DECIMAL OF AN INCH AND OF A FOOT |
| 631033-09 | TRAFFIC BARRIER TERMINAL, TYPE 6B |
| 701001-02 | OFF-ROAD OPERATIONS, 2L, 2W, MORE THAN 15' AWAY |
| 701006-05 | OFF-ROAD OPERATIONS, 2L, 2W, 15' to 24" FROM PAVEMENT EDGE |
| 701201-05 | LANE CLOSURE, 2L, 2W, DAY ONLY, FOR SPEEDS ≥ 45 MPH |
| 701316-13 | LANE CLOSURE, 2L, 2W, BRIDGE REPAIR FOR SPEED > 45 MPH |
| 701901-08 | TRAFFIC CONTROL DEVICES |
| 780001-05 | TYPICAL PAVEMENT MARKINGS |
| 862001-01 | UNINTERRUPTABLE POWER SUPPLY (UPS) |

| | |
|---|--|
| Location(s): | Hot-Mix Asphalt Surface Course (IL-148) |
| Mixture Use(s): | Hot-Mix Asphalt Surface Course, Mix C, N70 |
| PG: | PG64-22 |
| Design Air Voids: | 4.0 %, 70 Gyration Design |
| Mixture Composition:(Gradation Mixture) | IL-9.5mm |
| Friction Aggregate: | Mix C |
| Mixture Weight: | 112 lbs/Sq Yd/in |
| Quality Management Program: | QCQA |
| Sublot Size: | 3000 |
| Material Transfer Device (Required?): | No |

| | |
|---|--|
| Location(s): | Hot-Mix Asphalt Binder Course (IL-148) |
| Mixture Use(s): | Hot-Mix Asphalt Course, N70, 9.5mm |
| PG: | PG64-22 |
| Design Air Voids: | 4.0 %, 70 Gyration Design |
| Mixture Composition:(Gradation Mixture) | IL-9.5mm |
| Friction Aggregate: | None |
| Mixture Weight: | 112 lbs/Sq Yd/in |
| Quality Management Program: | QCQA |
| Sublot Size: | 3000 |
| Material Transfer Device (Required?): | No |

REV. - MS

MODEL: Default
 FILE: Mainfile.pxl
 Plotter: pwl
 User: pwl
 Project: 78963
 Path: C:\Users\pwl\Documents\DOT Office\District 9\Projects\78963\CADD\Drawings\Sheet\0978963-Sheets.dgn

| | | |
|------------------------------|-------------------|-----------------|
| USER NAME = Derek.Snyder | DESIGNED - DRS | REVISED - _____ |
| | DRAWN - DRS | REVISED - _____ |
| PLOT SCALE = 100.0000' / in. | CHECKED - MAS | REVISED - _____ |
| PLOT DATE = 11/30/2022 | DATE - 10/17/2022 | REVISED - _____ |

**STATE OF ILLINOIS
DEPARTMENT OF TRANSPORTATION**

INDEX OF SHEETS, GENERAL NOTES, STANDARDS

SCALE: _____ SHEET ____ OF ____ SHEETS STA. _____ TO STA. _____

| F.A.P. RTE. | SECTION | COUNTY | TOTAL SHEETS | SHEET NO. |
|--------------------|--------------------------|-----------|---------------------------|-----------|
| 726 | D9 BRIDGE OVERLAY 2023-6 | JEFFERSON | 18 | 3 |
| CONTRACT NO. 78963 | | | ILLINOIS FED. AID PROJECT | |

SUMMARY OF QUANTITIES

0047

| | |
|-----------|-----------------------|
| COUNTY: | JEFFERSON CO |
| ROUTE: | FAP 726 |
| FUNDING: | 80% FEDERAL 20% STATE |
| LOCATION: | BRIDGE |
| | STRUCTURE |
| | 041-0096 |

| CODE NUMBER | ITEM DESCRIPTION | UNIT | TOTAL QUANTITY | STRUCTURE |
|-------------|--|-------|----------------|-----------|
| 40600290 | BITUMINOUS MATERIALS (TACK COAT) | POUND | 1,171 | 1,171 |
| 40600982 | HOT-MIX ASPHALT SURFACE REMOVAL - BUTT JOINT | SQ YD | 327 | 327 |
| 40600990 | TEMPORARY RAMP | SQ YD | 36 | 36 |
| 40602985 | HOT-MIX ASPHALT BINDER COURSE, IL-9.5, N70 | TON | 15 | 15 |
| 40604052 | HOT-MIX ASPHALT SURFACE COURSE, IL-9.5, MIX "C", N70 | TON | 290 | 290 |
| 50102400 | CONCRETE REMOVAL | CU YD | 20.6 | 20.6 |
| 50300255 | CONCRETE SUPERSTRUCTURE | CU YD | 22.6 | 22.6 |
| 50300300 | PROTECTIVE COAT | SQ YD | 42 | 42 |
| 50800205 | REINFORCEMENT BARS, EPOXY COATED | POUND | 5470 | 5470 |
| 50800515 | BAR SPLICERS | EACH | 26 | 26 |
| 50800530 | MECHANICAL SPLICERS | EACH | 144 | 144 |
| 52000110 | PREFORMED JOINT STRIP SEAL | FOOT | 68 | 68 |
| 60300105 | FRAMES AND GRATES TO BE ADJUSTED | EACH | 4 | 4 |
| * 63100089 | TRAFFIC BARRIER TERMINAL, TYPE 6B | EACH | 1 | 1 |

* SPECIALTY ITEM

REV. - MS

MODEL: D:\full
 FILE NAME: P:\bldg-cw-bentley.com\PWD\DOT\Documents\DOT Offices\District 9\Projects\78963\CADDData\CAD\Projects\078963\Sheets.dgn

| | | | | | | | |
|--|--|--|---|------------------------------|---|---|---------------------------|
| USER NAME = Derek.Snyder DRAWN - _____ CHECKED - _____ DATE - _____ | DESIGNED - _____ DRAWN - _____ CHECKED - _____ DATE - _____ | REVISED - _____ REVISED - _____ REVISED - _____ REVISED - _____ | STATE OF ILLINOIS DEPARTMENT OF TRANSPORTATION | SUMMARY OF QUANTITIES | F.A. RTE. 726 SECTION 09 BRIDGE OVERLAY 2023-6 COUNTY JEFFERSON TOTAL SHEETS 18 SHEET NO. 4 CONTRACT NO. 78963 | SCALE: _____ SHEET ___ OF ___ SHEETS STA. _____ TO STA. _____ | ILLINOIS FED. AID PROJECT |
|--|--|--|---|------------------------------|---|---|---------------------------|

SUMMARY OF QUANTITIES - CONT

0047

| | |
|-----------|-----------------------|
| COUNTY: | JEFFERSON CO |
| ROUTE: | FAP 726 |
| FUNDING: | 80% FEDERAL 20% STATE |
| LOCATION: | BRIDGE |
| | STRUCTURE |
| | 041-0096 |

| CODE NUMBER | ITEM DESCRIPTION | UNIT | TOTAL QUANTITY | STRUCTURE |
|-------------|---|--------|----------------|-----------|
| | | | | |
| 63200310 | GUARDRAIL REMOVAL | FOOT | 58 | 58 |
| * 63300575 | REMOVE AND REERECT RAIL ELEMENT OF EXISTING GUARDRAIL | FOOT | 45 | 45 |
| 67000400 | ENGINEER'S FIELD OFFICE, TYPE A | CAL MO | 4 | 4 |
| 67100100 | MOBILIZATION | L SUM | 1 | 1 |
| 70100100 | TRAFFIC CONTROL AND PROTECTION, STANDARD 701316 | EACH | 1 | 1 |
| 70100450 | TRAFFIC CONTROL AND PROTECTION, STANDARD 701201 | L SUM | 1 | 1 |
| 70103815 | TRAFFIC CONTROL SURVEILLANCE | CAL DA | 6 | 6 |
| 70106500 | TEMPORARY BRIDGE TRAFFIC SIGNALS | EACH | 1 | 1 |
| 70106700 | TEMPORARY RUMBLE STRIPS | EACH | 6 | 6 |
| 70107025 | CHANGEABLE MESSAGE SIGN | CAL DA | 28 | 28 |
| 70300100 | SHORT TERM PAVEMENT MARKING | FOOT | 209 | 209 |
| 70300150 | SHORT TERM PAVEMENT MARKING REMOVAL | SQ FT | 952 | 952 |
| 70300221 | TEMPORARY PAVEMENT MARKING - LINE 4"- PAINT | FOOT | 2,650 | 2,650 |
| * 78001110 | PAINT PAVEMENT MARKING - LINE 4" | FOOT | 2,650 | 2,650 |

* SPECIALTY ITEM

REV. - MS

MODEL: Default
FILE: \\merrill-pw\lident-20k\benhufy.com\PIV\DOT\Documents\DOT Offices\District 9\Projects\78963\CADDData\CAD\Sheets\078963-Sheets.dgn

| | | | | | | | | | | | |
|------------------------------|------------------|-----------------|---|------------------------------|---------------------------|--------------------------|------------|--------------------------|-----------|--------------|-----------|
| USER NAME = Derek.Snyder | DESIGNED - _____ | REVISED - _____ | STATE OF ILLINOIS DEPARTMENT OF TRANSPORTATION | SUMMARY OF QUANTITIES | | | F.A. RTE.: | SECTION | COUNTY | TOTAL SHEETS | SHEET NO. |
| | DRAWN - _____ | REVISED - _____ | | SCALE: _____ | SHEET ____ OF ____ SHEETS | STA. _____ TO STA. _____ | 726 | 09 BRIDGE OVERLAY 2023-6 | JEFFERSON | 18 | 5 |
| PLOT SCALE = 100.0439' / in. | CHECKED - _____ | REVISED - _____ | | CONTRACT NO. 78963 | | | | | | | |
| PLOT DATE = 10/3/2022 | DATE - _____ | REVISED - _____ | | ILLINOIS FED. AID PROJECT | | | | | | | |

0047

SUMMARY OF QUANTITIES - CONT

| | |
|-----------|-----------------------|
| COUNTY: | JEFFERSON CO |
| ROUTE: | FAP 726 |
| FUNDING: | 80% FEDERAL 20% STATE |
| LOCATION: | BRIDGE |
| | STRUCTURE |
| | 041-0096 |

| CODE NUMBER | ITEM DESCRIPTION | UNIT | TOTAL QUANTITY | STRUCTURE |
|-------------|---|-------|----------------|-----------|
| 78300200 | RAISED REFLECTIVE PAVEMENT MARKER REMOVAL | EACH | 10 | 10 |
| 78300201 | PAVEMENT MARKING REMOVAL - GRINDING | SQ FT | 454 | 454 |
| * 86200300 | UNINTERRUPTABLE POWER SUPPLY, EXTENDED | EACH | 1 | 1 |
| X0325747 | BRIDGE DECK CONCRETE CRACK SEALER | FOOT | 400 | 400 |
| X5810101 | WATERPROOFING MEMBRANE (SPRAY APPLIED) | SQ YD | 2,247 | 2,247 |
| Z0012754 | STRUCTURAL REPAIR OF CONCRETE (DEPTH EQUAL TO OR LESS THAN 5 INCHES) | SQ FT | 313 | 313 |
| Z0016200 | DECK SLAB REPAIR (PARTIAL) | SQ YD | 19 | 19 |
| Z0034390 | MODULAR EXPANSION JOINT 6" | FOOT | 33 | 33 |
| 70400100 | TEMPORARY CONCRETE BARRIER | FOOT | 238 | 238 |
| 70400125 | PINNING TEMPORARY CONCRETE BARRIER | EACH | 24 | 24 |
| 70400200 | RELOCATE TEMPORARY CONCRETE BARRIER | FOOT | 238 | 238 |
| 70600250 | IMPACT ATTENUATORS, TEMPORARY (NON-REDIRECTIVE), TEST LEVEL 3 | EACH | 1 | 1 |
| 70600260 | IMPACT ATTENUATORS, TEMPORARY (FULLY-REDIRECTIVE, NARROW), TEST LEVEL 3 | EACH | 1 | 1 |
| 70600332 | IMPACT ATTENUATORS, RELOCATE (FULLY-REDIRECTIVE, NARROW), TEST LEVEL 3 | EACH | 1 | 1 |
| 70600350 | IMPACT ATTENUATORS, RELOCATE (NON-REDIRECTIVE), TEST LEVEL 3 | EACH | 1 | 1 |

* SPECIALTY ITEM

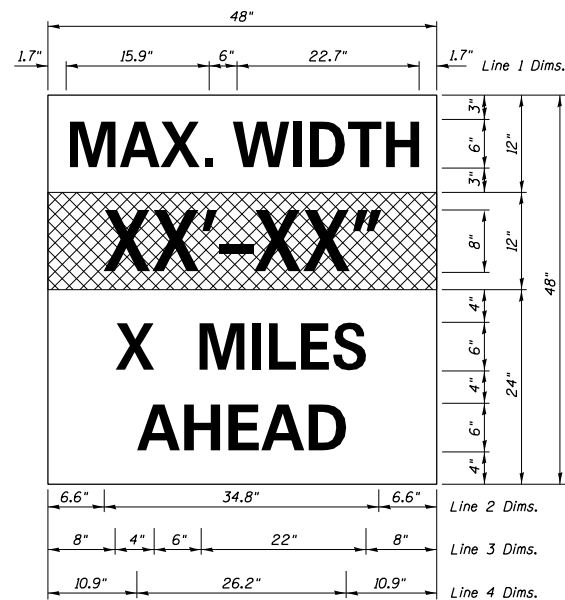
REV. - MS

MODEL: Default
 FILE: \\mvs01-pw-illinois-ban.bentley.com\PWD\DOT\Documents\DOT_Offices\Default_0\Projects\78963\CADDData\CAD\Sheets\078963-Sheets.dgn

| | | | | | | | | | | | |
|------------------------------|------------------|-----------------|---|------------------------------|--|--|-----------------|------------------------------------|--------------------------|--------------------|---------------|
| USER NAME = Derek.Snider | DESIGNED - _____ | REVISED - _____ | STATE OF ILLINOIS DEPARTMENT OF TRANSPORTATION | SUMMARY OF QUANTITIES | | | F.A. RTE. = 726 | SECTION = 09 BRIDGE OVERLAY 2023-6 | COUNTY = JEFFERSON | TOTAL SHEETS = 18 | SHEET NO. = 6 |
| PLOT SCALE = 100.0439' / in. | CHECKED - _____ | REVISED - _____ | | | | | SCALE: _____ | SHEET _____ OF _____ SHEETS | STA. _____ TO STA. _____ | CONTRACT NO. 78963 | |
| PLOT DATE = 10/3/2022 | DATE - _____ | REVISED - _____ | | ILLINOIS FED. AID PROJECT | | | | | | | |

Notes for Max Width Sign:

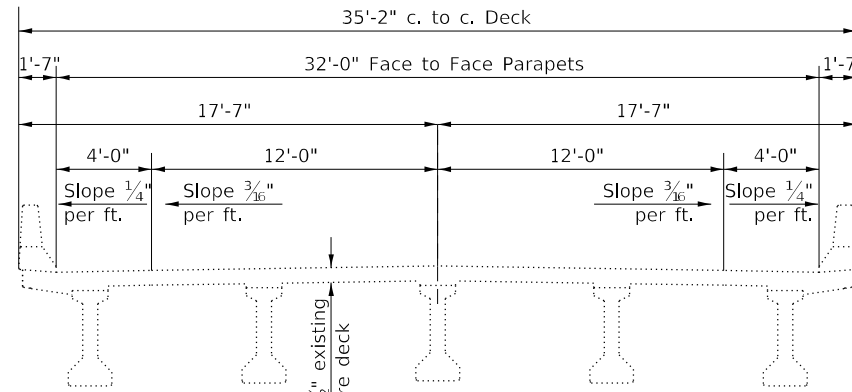
1. Install a Max Width Sign each direction on IL 148 to give traffic approaching work zone enough advance notice to change routes if needed. Exact locations as directed by engineer.
2. The contractor shall furnish the posts and erect the signs at the locations directed by the engineer. All signs shall be post mounted.
3. The noted work, including signs, posts, hardware and labor shall be included in the contract unit price, each, for Traffic Control and Protection, Std. 701316, no other compensation will be allowed.
4. The width shown on the W12-1103 sign shall be 18" less than what is shown in the staged lane widths table or as directed by the Engineer.
5. The "X" MILES AHEAD will be determined by the engineer.



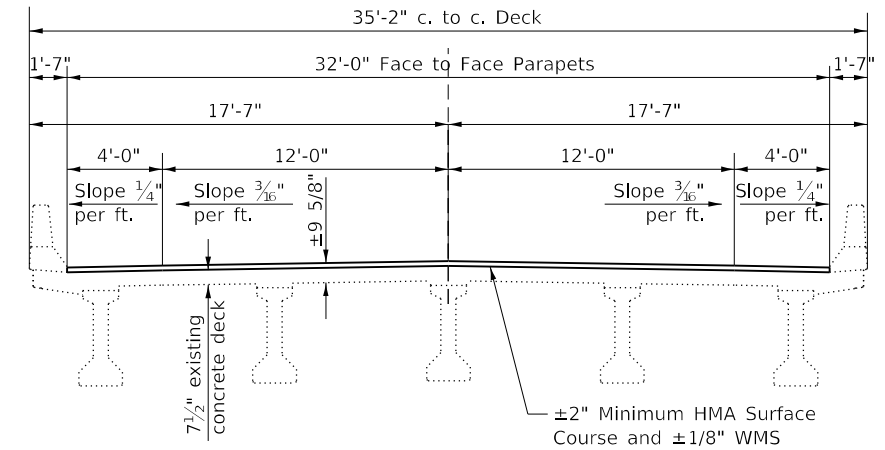
W12-1103

W12-1103, No Border
 "MAX WIDTH" 6D, No Border, Black on White
 "XX'-XX'" 8D, No Border, Black on Orange
 "X MILES" 6D, No Border, Black on White
 "AHEAD" 6D, No Border, Black on White

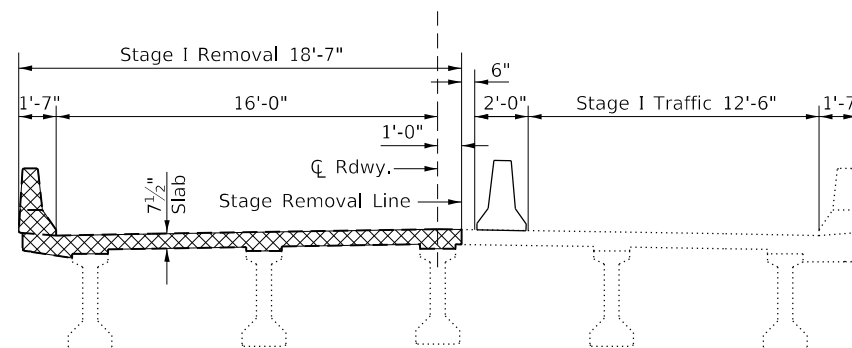
The Contractor shall use extreme care during concrete removal so as not to damage the PPC I-beam.



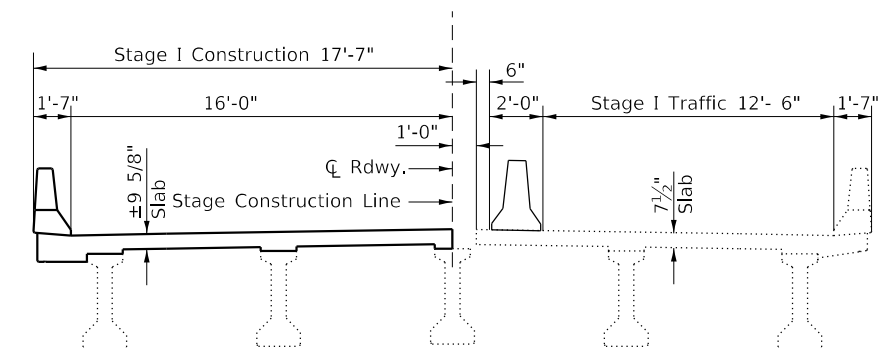
TYPICAL BRIDGE SECTION - EXISTING



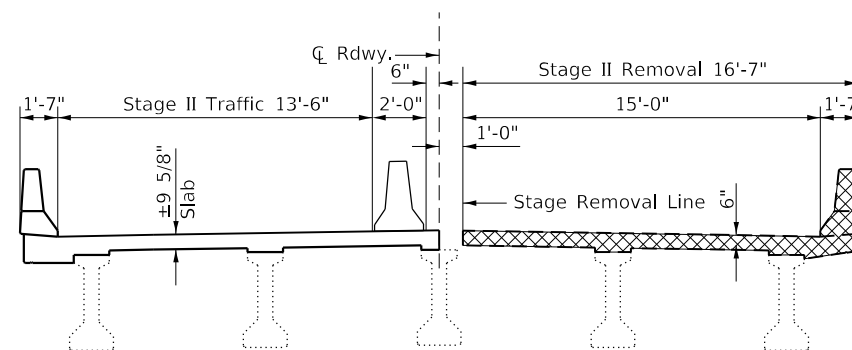
TYPICAL BRIDGE SECTION - PROPOSED



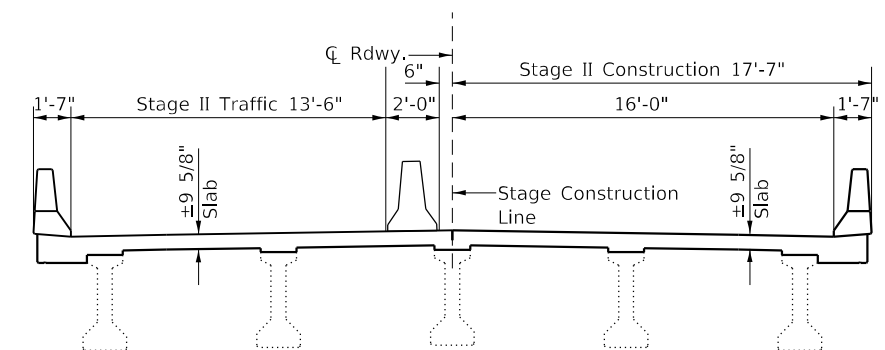
STAGE I REMOVAL
(AT PEIR 4 ONLY)



STAGE I CONSTRUCTION
(AT PEIR 4 ONLY)



STAGE II REMOVAL
(AT PEIR 4 ONLY)



STAGE II CONSTRUCTION
(AT PEIR 4 ONLY)

All sections looking East

MODEL: Default
FILE NAME: p:\a\illinois\kentby.com\PIV\DOT\Documents\DOT - Offices\District 9\Projects\78963\CAD\Sheet\DOT 78963-Sheets.dgn

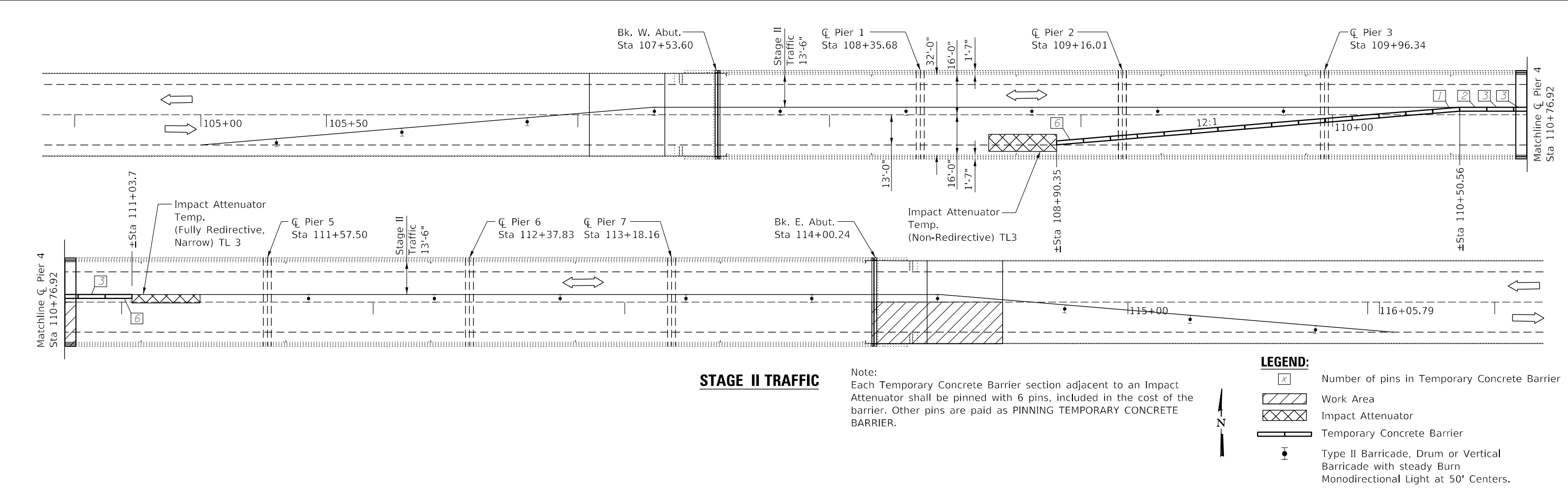
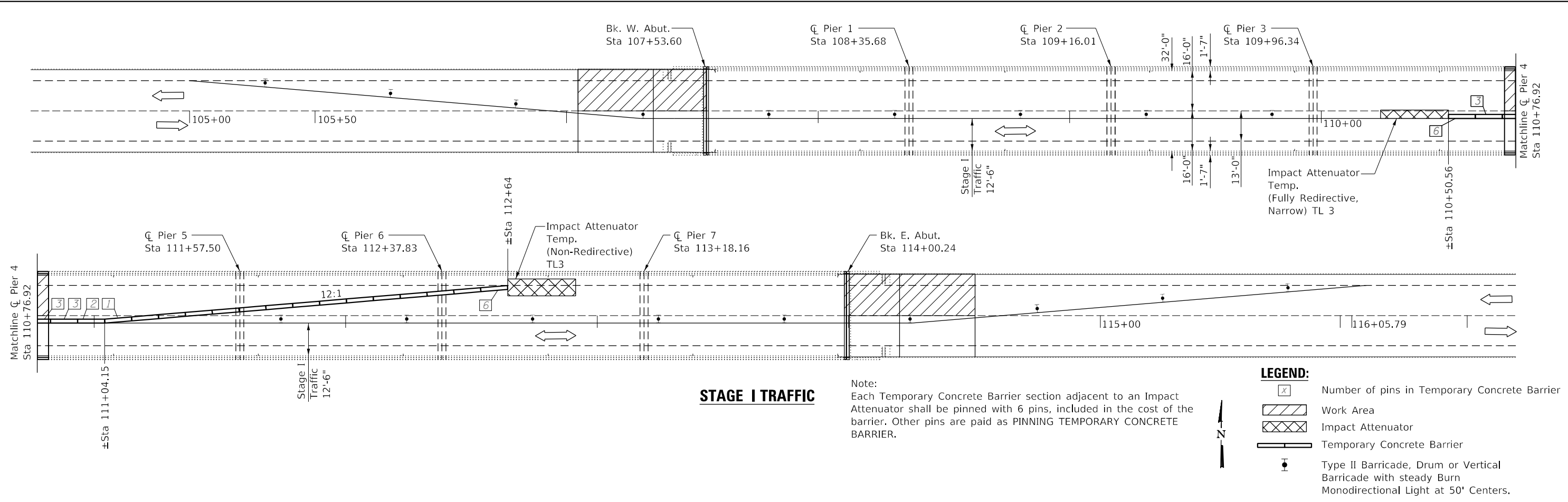
| | | |
|------------------------------|----------------|-------------------|
| USER NAME = Derek.Snyder | DESIGNED - DRS | REVISED - |
| DRAWN - DRS | CHECKED - MAS | DATE - 10/17/2022 |
| PLOT SCALE = 100.6539' / in. | | |
| PLOT DATE = 11/30/2022 | | |

STATE OF ILLINOIS
DEPARTMENT OF TRANSPORTATION

TYPICAL SECTIONS
SN 041-0096

SCALE: _____ SHEET _____ OF _____ SHEETS STA. _____ TO STA. _____

| | | | | |
|--------------------|----------------------------------|------------------|-----------------|---------------------------|
| F.A.P. RTE. 726 | SECTION D9 BRIDGE OVERLAY 2023-6 | COUNTY JEFFERSON | TOTAL SHEETS 18 | SHEET NO. 8 |
| CONTRACT NO. 78963 | | | | ILLINOIS FED. AID PROJECT |



MODEL: Default
 FILE NAME: p:\m\illscpa\kentby.com\PIV\DOT\Documents\DOT - Office\District - projects\78963\CAD\Drawings\DOT 78963-Sheets.dgn

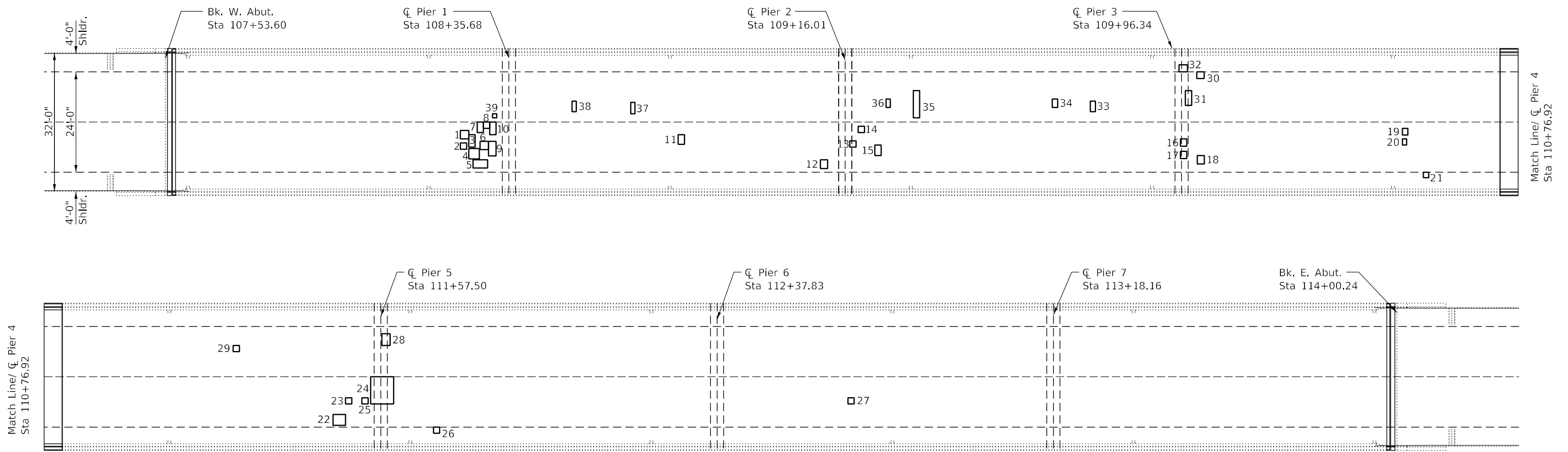
| | | |
|------------------------------|-------------------|-----------------|
| USER NAME = Derek.Snyder | DESIGNED - DRS | REVISED - _____ |
| DRAWN - DRS | CHECKED - MAS | REVISED - _____ |
| PLOT SCALE = 100.6539' / in. | DATE - 10/17/2022 | REVISED - _____ |
| PLOT DATE = 11/30/2022 | | |

**STATE OF ILLINOIS
DEPARTMENT OF TRANSPORTATION**

**STAGING PLAN
SN 041-0096**

SCALE: _____ SHEET ____ OF ____ SHEETS STA. _____ TO STA. _____

| | | | | |
|--------------------|----------------------------------|------------------|-----------------|---------------------------|
| F.A.P. RTE. 726 | SECTION D9 BRIDGE OVERLAY 2023-6 | COUNTY JEFFERSON | TOTAL SHEETS 18 | SHEET NO. 9 |
| CONTRACT NO. 78963 | | | | ILLINOIS FED. AID PROJECT |



| East Bound | | | |
|-------------------------|-------------|------------|----------------|
| Number | Length (ft) | Width (ft) | Area (Sq. Yd.) |
| 1 | 2.0 | 2.0 | 0.4 |
| 2 | 1.5 | 1.5 | 0.3 |
| 3 | 1.5 | 3.0 | 0.5 |
| 4 | 2.5 | 2.5 | 0.7 |
| 5 | 3.5 | 2.0 | 0.8 |
| 6 | 2.0 | 2.0 | 0.4 |
| 7 | 1.5 | 2.5 | 0.4 |
| 8 | 1.5 | 1.5 | 0.3 |
| 9 | 1.8 | 3.5 | 0.7 |
| 10 | 1.5 | 3.0 | 0.5 |
| 11 | 1.5 | 2.3 | 0.4 |
| 12 | 1.7 | 2.1 | 0.4 |
| 13 | 1.5 | 1.5 | 0.3 |
| 14 | 1.5 | 1.5 | 0.3 |
| 15 | 1.5 | 2.5 | 0.4 |
| 16 | 1.5 | 1.8 | 0.3 |
| 17 | 1.5 | 1.7 | 0.3 |
| 18 | 1.7 | 2.0 | 0.4 |
| 19 | 1.3 | 1.6 | 0.2 |
| 20 | 1.0 | 1.5 | 0.2 |
| 21 | 1.3 | 1.3 | 0.2 |
| 22 | 3.0 | 2.6 | 0.9 |
| 23 | 1.5 | 1.5 | 0.3 |
| 24 | 5.5 | 6.5 | 4.0 |
| 25 | 1.5 | 1.5 | 0.3 |
| 26 | 1.5 | 1.5 | 0.3 |
| 27 | 1.5 | 1.5 | 0.3 |
| East Bound Total | | | 14.1 |

| West Bound | | | |
|-------------------------|-------------|------------|----------------|
| Number | Length (ft) | Width (ft) | Area (Sq. Yd.) |
| 28 | 2.0 | 2.8 | 0.6 |
| 29 | 1.5 | 1.5 | 0.3 |
| 30 | 1.8 | 1.6 | 0.3 |
| 31 | 1.5 | 3.5 | 0.6 |
| 32 | 2.0 | 1.7 | 0.4 |
| 33 | 1.2 | 2.5 | 0.3 |
| 34 | 1.3 | 2.0 | 0.3 |
| 35 | 1.5 | 6.5 | 1.1 |
| 36 | 1.0 | 2.0 | 0.2 |
| 37 | 1.0 | 2.7 | 0.3 |
| 38 | 1.0 | 2.5 | 0.3 |
| 39 | 1.0 | 1.0 | 0.1 |
| West Bound Total | | | 4.8 |

Notes: The Engineer will determine final patch locations and quantities in the field before bridge deck patching operations begin.

BILL OF MATERIAL

| ITEM | UNIT | TOTAL |
|-----------------------------------|---------|-------|
| Deck Slab Repair (Partial Depth) | Sq. Yd. | 19 |
| Bridge Deck Concrete Crack Sealer | Foot | 400 |
| | | |
| | | |
| | | |
| | | |
| | | |
| | | |
| | | |

MODEL: Default
FILE NAME: p:\a\illinois\hwy\hwy\p\w\DOT\Documents\DOT - Offices\District - Projects\78963\CADData\CADSheets\D7 78963-Sheets.dgn

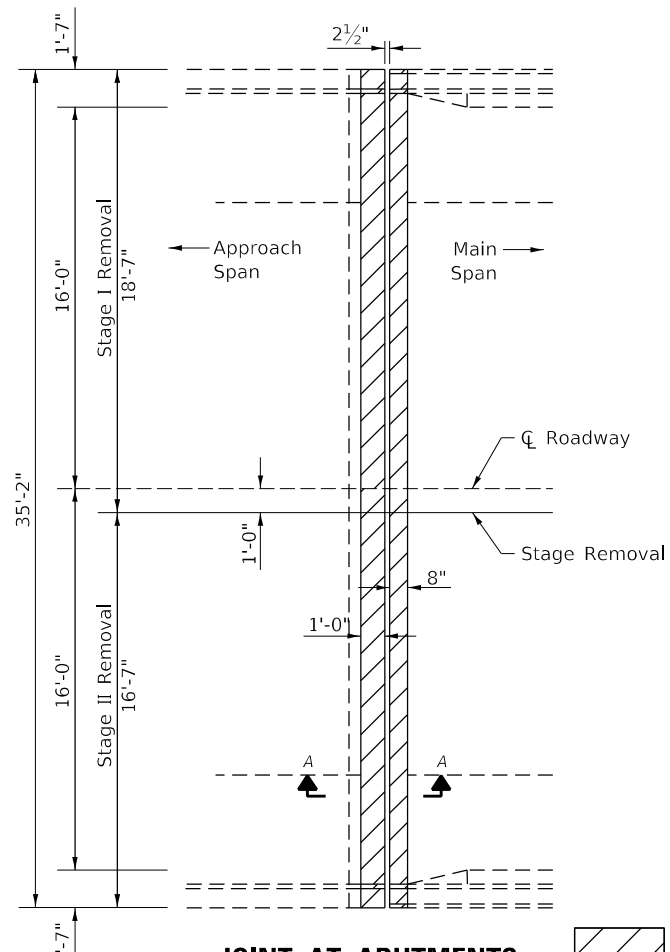
| | | |
|------------------------------|-------------------|-----------------|
| USER NAME = Derek.Snyder | DESIGNED - DRS | REVISED - _____ |
| PLOT SCALE = 100.6539' / in. | DRAWN - DRS | REVISED - _____ |
| PLOT DATE = 11/30/2022 | CHECKED - MAS | REVISED - _____ |
| | DATE - 10/17/2022 | REVISED - _____ |

**STATE OF ILLINOIS
DEPARTMENT OF TRANSPORTATION**

**DECK PATCHING
SN 041-0096**

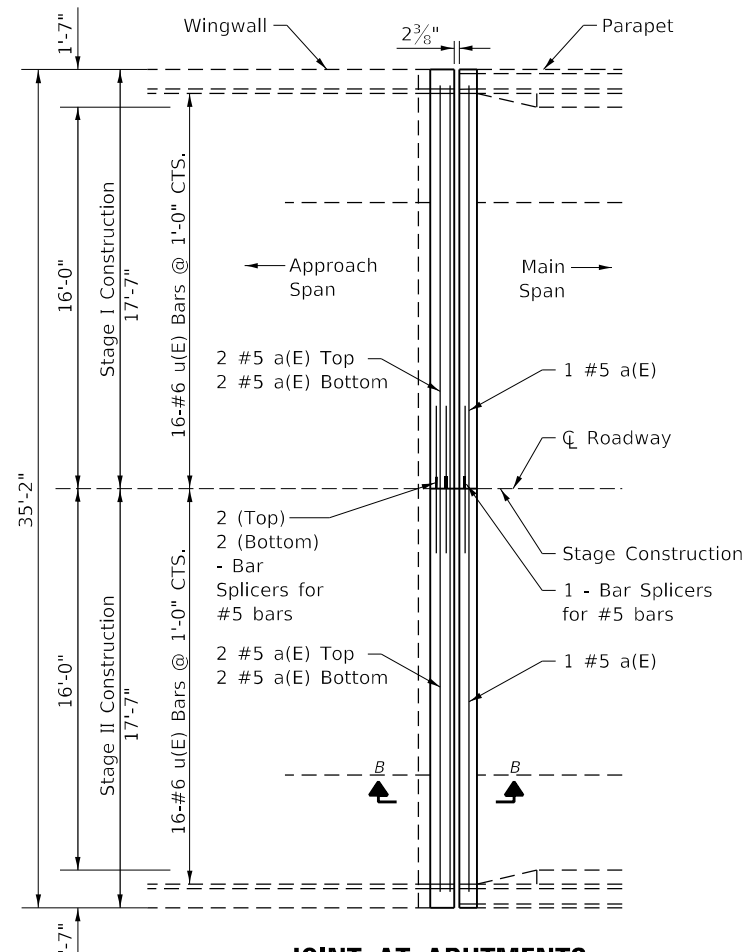
SCALE: _____ SHEET ____ OF ____ SHEETS STA. _____ TO STA. _____

| | | | | |
|---------------------------|--------------------------|-----------|--------------|-----------|
| F.A.P. RTE. | SECTION | COUNTY | TOTAL SHEETS | SHEET NO. |
| 726 | D9 BRIDGE OVERLAY 2023-6 | JEFFERSON | 18 | 10 |
| CONTRACT NO. 78963 | | | | |
| ILLINOIS FED. AID PROJECT | | | | |

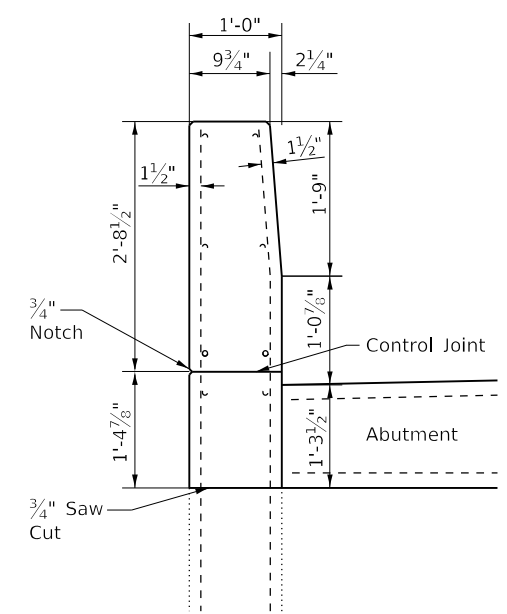


**JOINT AT ABUTMENTS
SHOWING CONCRETE REMOVAL
(W. ABUT SHOWN; E. ABUT SIMILAR)**

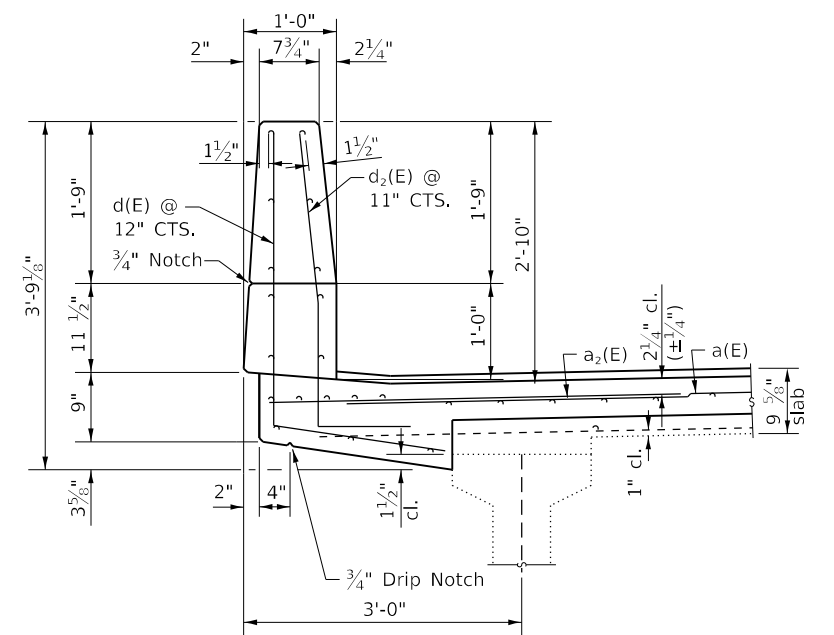
Concrete Removal



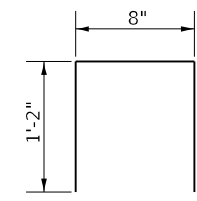
**JOINT AT ABUTMENTS
SHOWING NEW CONCRETE
(W. ABUT SHOWN; E. ABUT SIMILAR)**



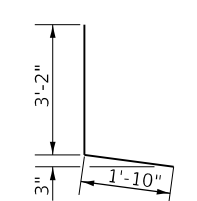
SECTION THROUGH WINGWALL



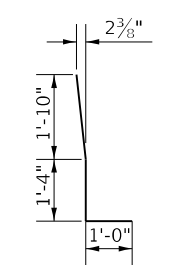
SECTION THROUGH PARAPET



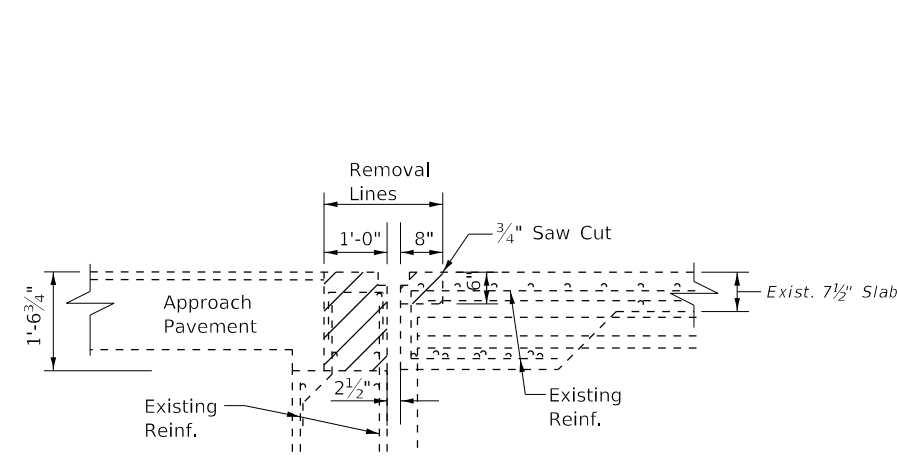
BAR u(E)



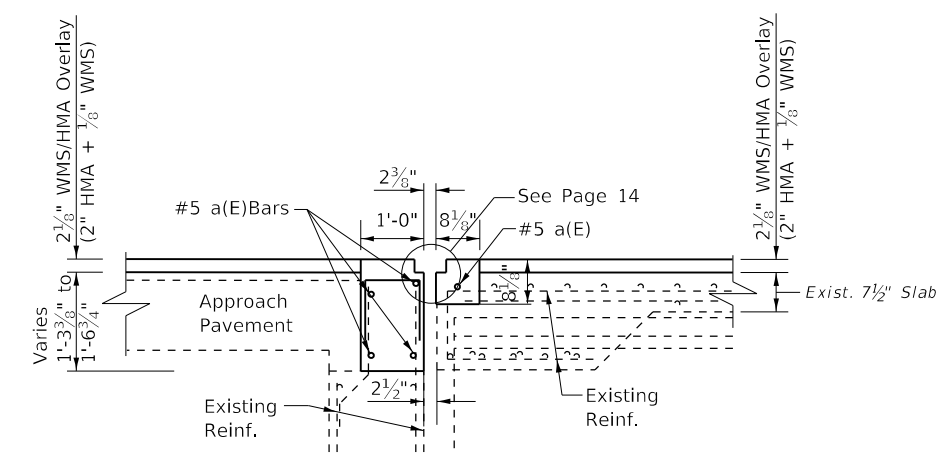
BAR d(E)



BAR d₂(E)



SECTION A-A



SECTION B-B

BILL OF MATERIAL (TWO ABUTMENTS)

| Bar | No. | Size | Length | Shape |
|----------------------------------|-----|------|---------|-------|
| a(E) | 20 | #5 | 16'-11" | — |
| a ₁ (E) | 8 | #6 | 4'-0" | — |
| d(E) | 8 | #4 | 5'-0" | L |
| d ₁ (E) | 8 | #5 | 4'-2" | L |
| u(E) | 64 | #6 | 3'-0" | U |
| Bar Splicer | | | Each | 10 |
| Concrete Superstructure | | | Cu. Yd. | 6 |
| Concrete Removal | | | Cu. Yd. | 5.2 |
| Reinforcement Bars, Epoxy Coated | | | Pound | 760 |

**JOINT RECONSTRUCTION DETAILS
IL 148 OVER BIG MUDDY RIVER
FAP 726 - D9 BRIDGE OVERLAY 2023-6
JEFFERSON COUNTY
STRUCTURE NO. 041-0096**

MODEL: Default
FILE NAME: p:\a\illinois\work\benby.com\p\DOT\Documents\DOT - Offices\District 9\Projects\78963\CAD\Drawings\07 78963-Sheets.dgn

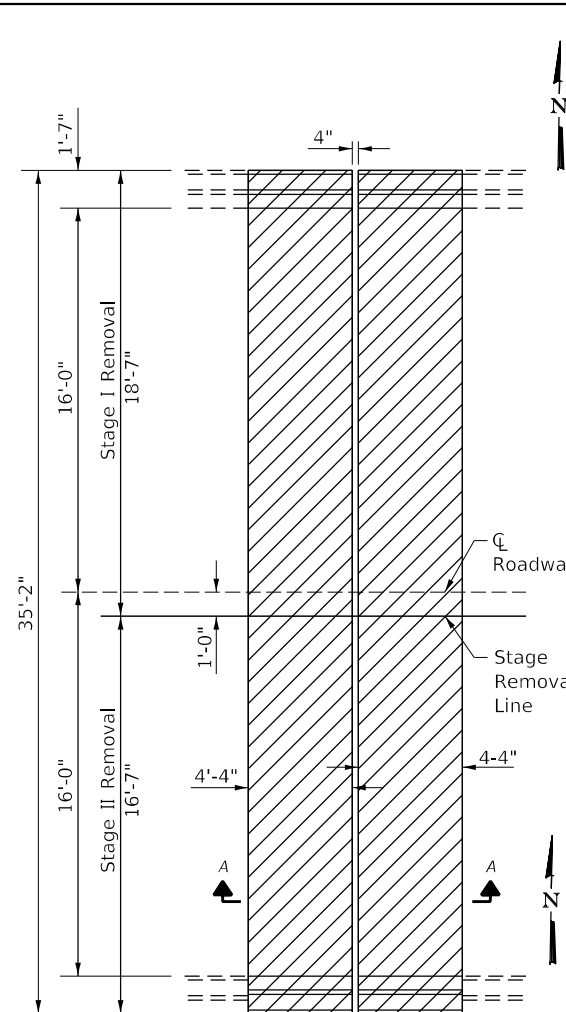
| | | |
|------------------------------|-------------------|-----------|
| USER NAME = Derek.Snyder | DESIGNED - DRS | REVISED - |
| PLOT SCALE = 100.6539' / in. | DRAWN - DRS | REVISED - |
| PLOT DATE = 11/30/2022 | CHECKED - MAS | REVISED - |
| | DATE - 10/17/2022 | REVISED - |

**STATE OF ILLINOIS
DEPARTMENT OF TRANSPORTATION**

**JOINT RECONSTRUCTION DETAILS
AT ABUTMENTS SN 041-0096**

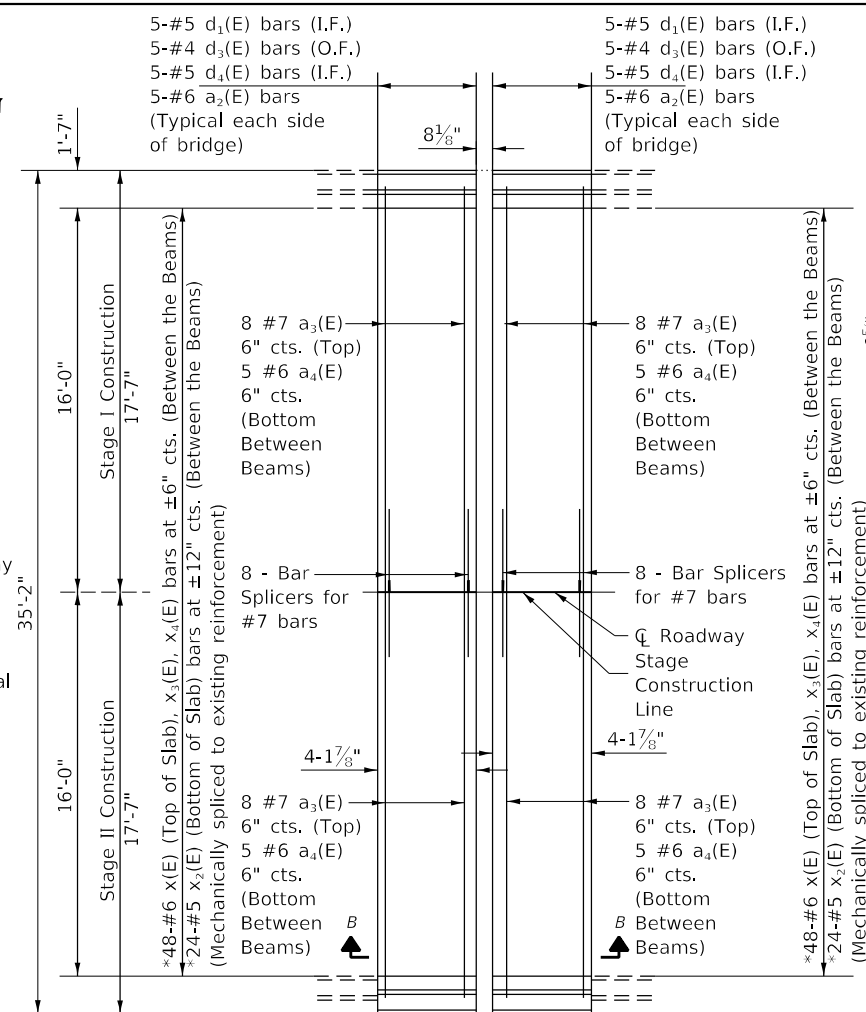
SCALE: _____ SHEET _____ OF _____ SHEETS STA. _____ TO STA. _____

| | | | | |
|---------------------------|----------------------------------|------------------|-----------------|--------------|
| F.A.P. RTE. 726 | SECTION D9 BRIDGE OVERLAY 2023-6 | COUNTY JEFFERSON | TOTAL SHEETS 18 | SHEET NO. 11 |
| CONTRACT NO. 78963 | | | | |
| ILLINOIS FED. AID PROJECT | | | | |

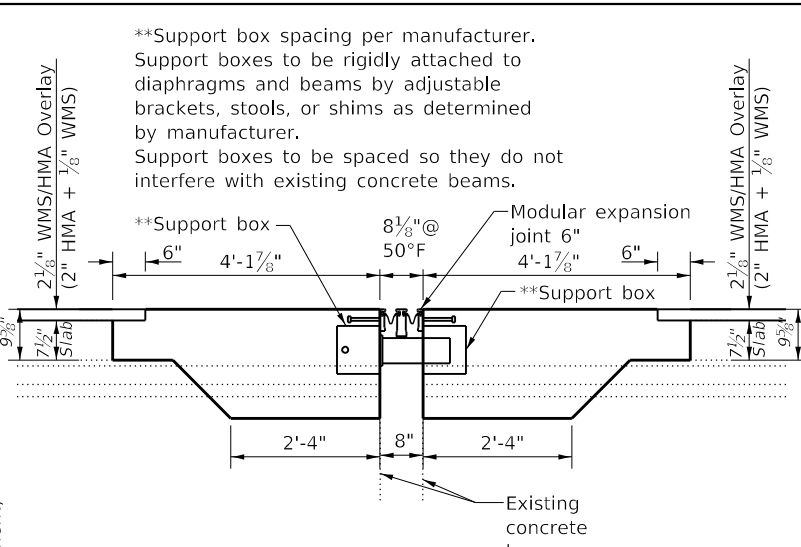


**JOINT AT PIER 4
SHOWING CONCRETE REMOVAL**

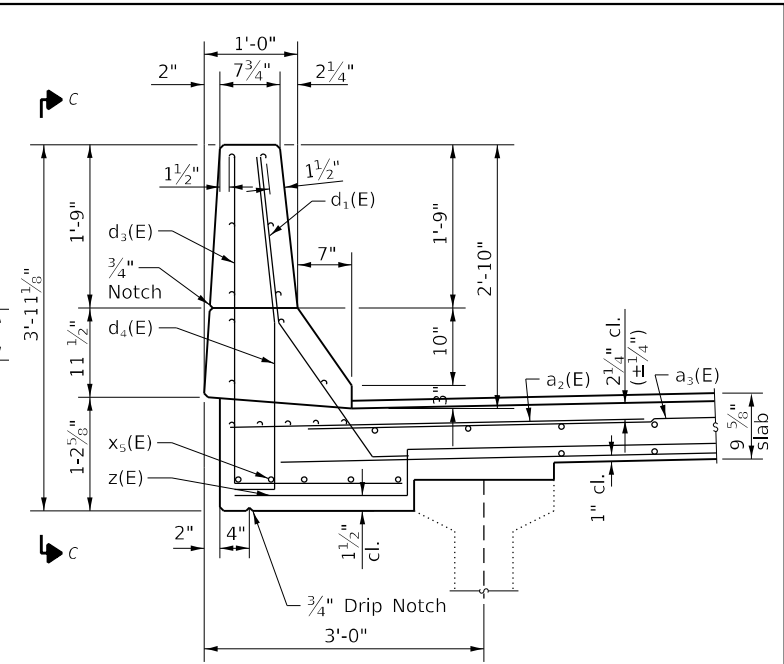
Concrete Removal



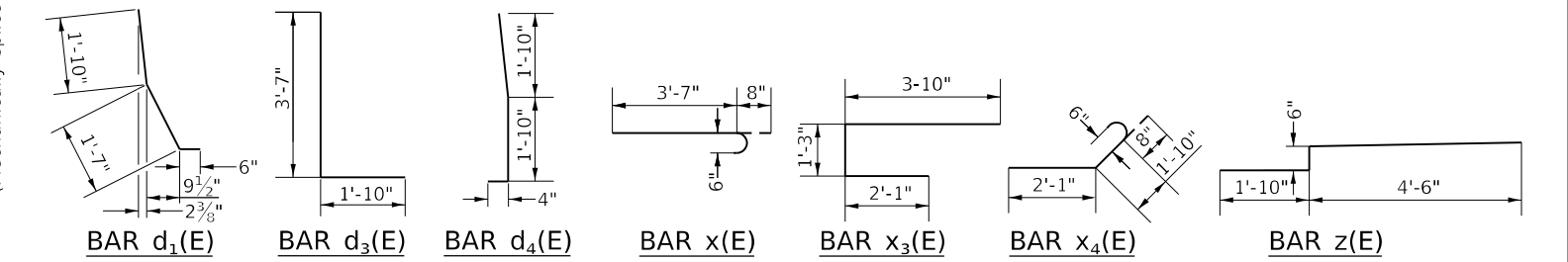
**JOINT AT PIER 4
SHOWING NEW CONCRETE**



**SECTION THROUGH MODULAR
EXPANSION JOINT AT SUPPORT BOX
(Reinforcement not shown for clarity)**

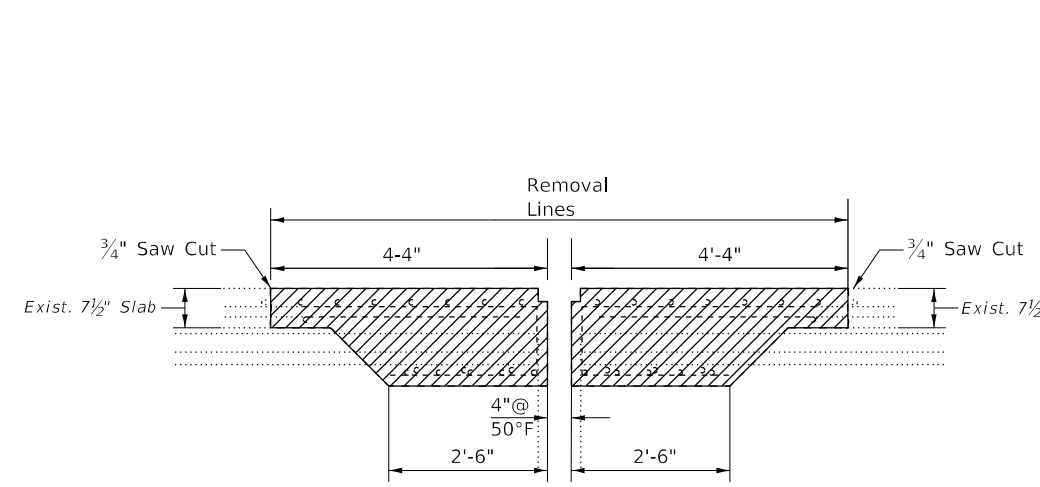


**SECTION THROUGH PARAPET
(See sheet 13 of 18 for section C-C)**

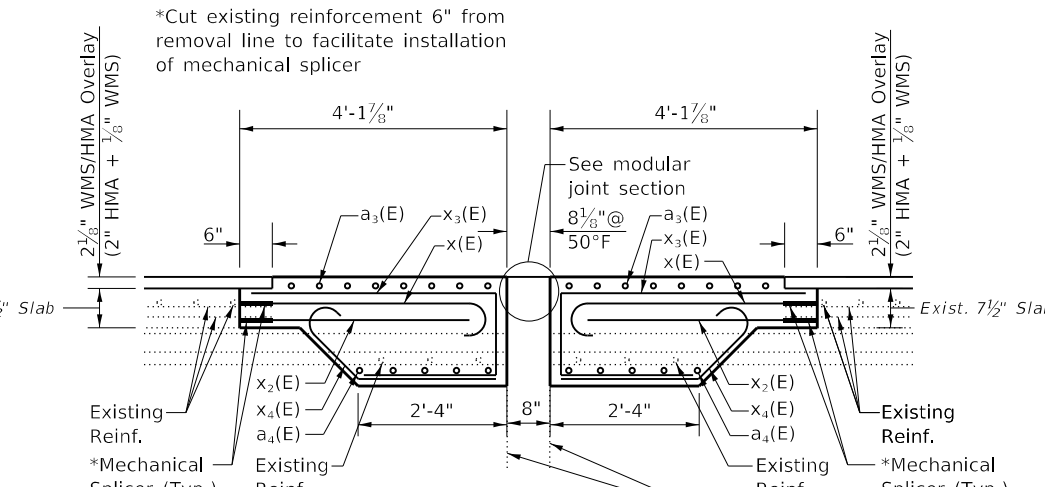


BILL OF MATERIAL (PIER 4)

| Bar | No. | Size | Length | Shape |
|----------------------------------|-----|------|---------|--------------|
| a ₂ (E) | 20 | #6 | 4'-0" | — |
| a ₃ (E) | 32 | #7 | 16'-11" | — |
| a ₄ (E) | 40 | #6 | 6'-5" | — |
| d ₁ (E) | 20 | #5 | 3'-11" | ⌋ |
| d ₃ (E) | 20 | #4 | 5'-5" | ⌋ |
| d ₄ (E) | 20 | #5 | 4'-0" | ⌋ |
| x(E) | 96 | #6 | 4'-3" | ⌋ |
| x ₂ (E) | 48 | #6 | 3'-4" | ⌋ |
| x ₃ (E) | 96 | #6 | 7'-2" | ⌋ |
| x ₄ (E) | 96 | #6 | 4'-7" | ⌋ |
| x ₅ (E) | 20 | #6 | 3'-4" | ⌋ |
| z(E) | 20 | #6 | 6'-10" | ⌋ |
| Bar Splicers | | | | Each 16 |
| Mechanical Splicers | | | | Each 144 |
| Concrete Superstructure | | | | Cu. Yd. 16.6 |
| Concrete Removal | | | | Cu. Yd. 15.4 |
| Reinforcement Bars, Epoxy Coated | | | | Pound 4710 |



SECTION A-A



**SECTION B-B
(Modular Expansion Joint not shown for clarity)**

**JOINT RECONSTRUCTION DETAILS
IL 148 OVER BIG MUDDY RIVER
FAP 726 - D9 BRIDGE OVERLAY 2023-6
JEFFERSON COUNTY
STRUCTURE NO. 041-0096**

MODEL: D:\p\full FILE: M:\d9_11\p\bridge-cv\benefit\com\PHWDOT\Documents\DOT Office\Drawings\9\Projects\78963\CADD\Drawings\CAD\Sheet\078963-Sheets.dgn
 PROJECT: 78963

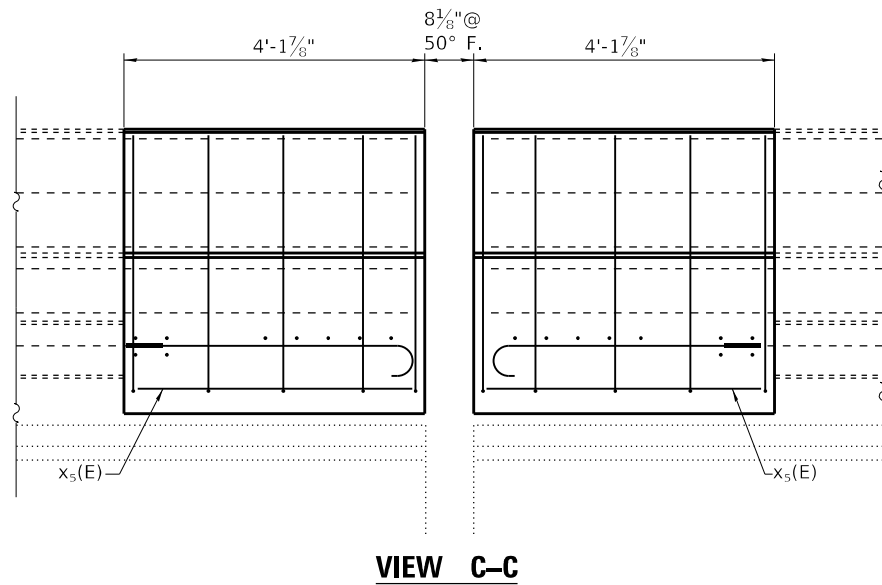
| | | |
|------------------------------|-------------------|-----------|
| USER NAME = Derek.Snyder | DESIGNED - DRS | REVISED - |
| DRAWN - DRS | REVISIONS - | |
| PLOT SCALE = 100.0000' / in. | CHECKED - MAS | REVISED - |
| PLOT DATE = 11/30/2022 | DATE - 10/17/2022 | REVISED - |

**STATE OF ILLINOIS
DEPARTMENT OF TRANSPORTATION**

**JOINT RECONSTRUCTION DETAILS
AT PIER 4 SN 041-0096**

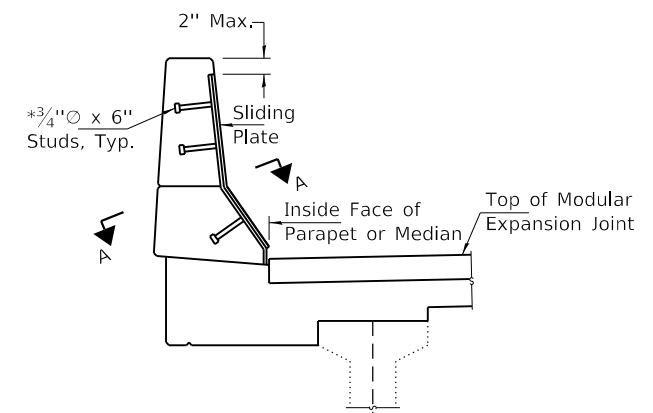
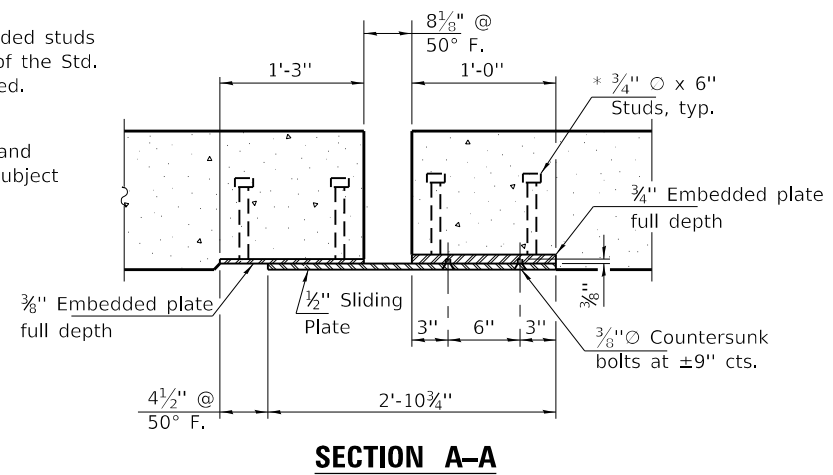
SCALE: _____ SHEET _____ OF _____ SHEETS STA. _____ TO STA. _____

| F.A.P. RTE. | SECTION | COUNTY | TOTAL SHEETS | SHEET NO. |
|---------------------------|--------------------------|-----------|--------------------|-----------|
| 726 | D9 BRIDGE OVERLAY 2023-6 | JEFFERSON | 18 | 12 |
| ILLINOIS FED. AID PROJECT | | | CONTRACT NO. 78963 | |



* Granular or solid flux filled headed studs conforming to Article 1006.32 of the Std. Specs., automatically end welded.

Note:
The joint opening, deck, parapet and 1/2" Sliding Plate dimensions are subject to change per joint manufacturer.



**SLIDING PLATE DETAILS
FOR PARAPETS & MEDIAN**
Cost included with modular expansion joint

*JOINT RECONSTRUCTION DETAILS
IL 148 OVER BIG MUDDY RIVER
FAP 726 - D9 BRIDGE OVERLAY 2023-6
JEFFERSON COUNTY
STRUCTURE NO. 041-0096*

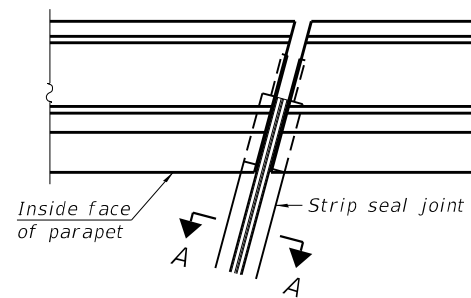
MODEL: Default
 FILE: Main.dwg
 PLOT: 11/30/2022 11:30:22 AM
 PLOT SCALE: 100.0000' / in.
 PLOT DATE: 11/30/2022

| | | |
|------------------------------|-------------------|-----------------|
| USER NAME = Derek.Snyder | DESIGNED - DRS | REVISED - _____ |
| DRAWN - DRS | CHECKED - MAS | REVISED - _____ |
| PLOT SCALE = 100.0000' / in. | DATE - 10/17/2022 | REVISED - _____ |
| PLOT DATE = 11/30/2022 | | |

**STATE OF ILLINOIS
DEPARTMENT OF TRANSPORTATION**

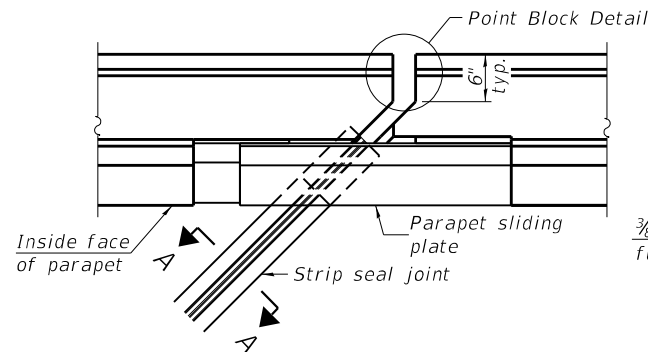
| | |
|---|-----------------------------|
| JOINT RECONSTRUCTION DETAILS AT PIER 4 SN 041-0096 | |
| SCALE: _____ | SHEET _____ OF _____ SHEETS |
| STA. _____ | TO STA. _____ |

| F.A.P. RTE. | SECTION | COUNTY | TOTAL SHEETS | SHEET NO. |
|---------------------------|--------------------------|-----------|--------------|-----------|
| 726 | D9 BRIDGE OVERLAY 2023-6 | JEFFERSON | 18 | 13 |
| CONTRACT NO. 78963 | | | | |
| ILLINOIS FED. AID PROJECT | | | | |

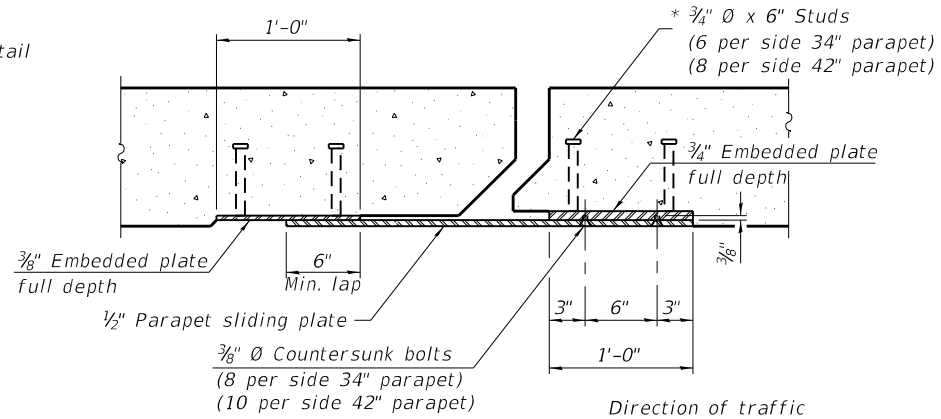


FOR SKEWS $\leq 30^\circ$

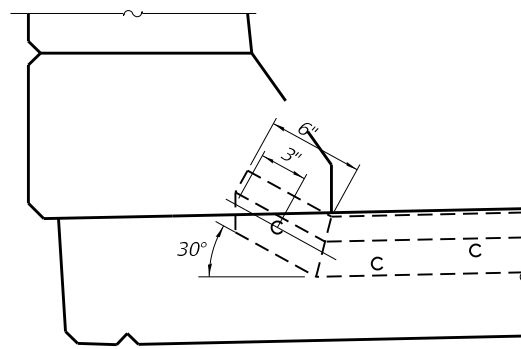
PLAN AT PARAPET



FOR SKEWS $> 30^\circ$

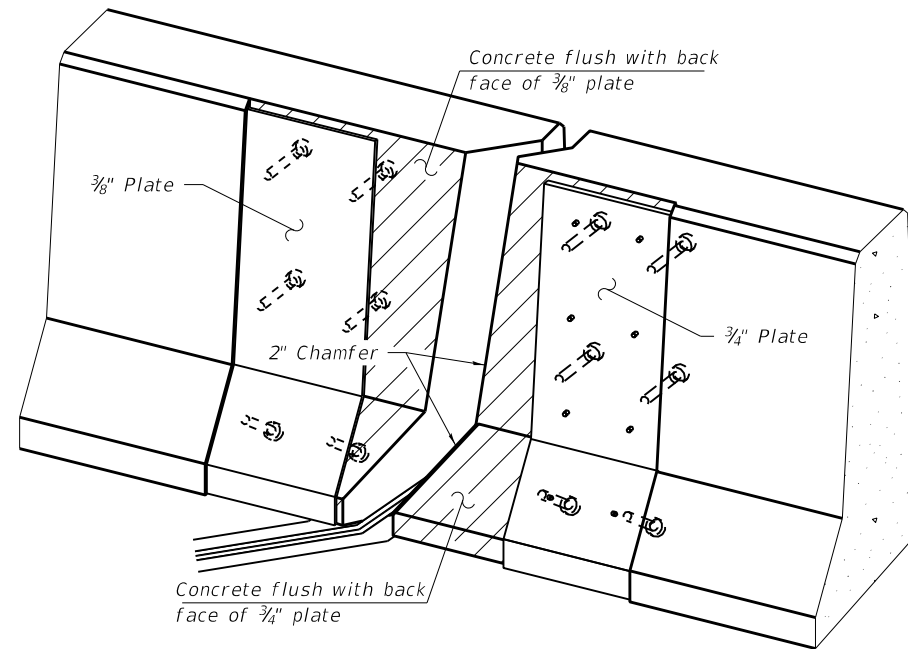


SECTION B-B

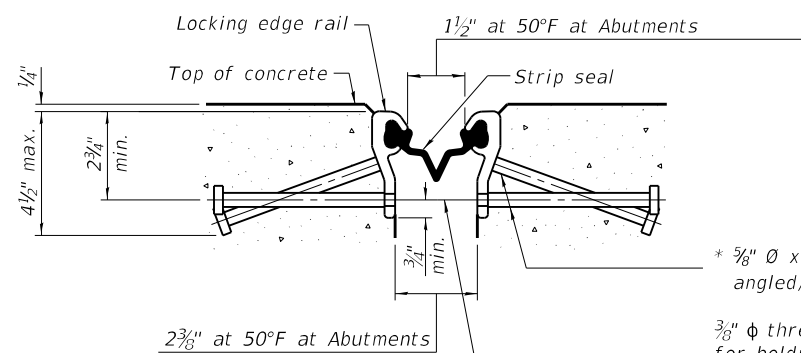


ELEVATION AT PARAPET

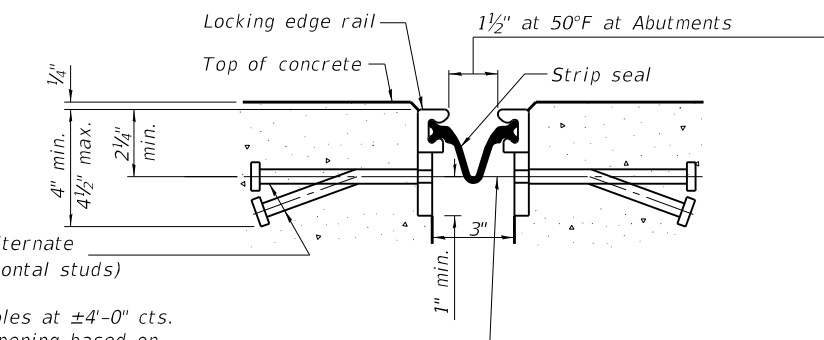
(Skew $\leq 30^\circ$)



TRIMETRIC VIEW
(Showing embedded plates only)



SHOWING ROLLED RAIL JOINT



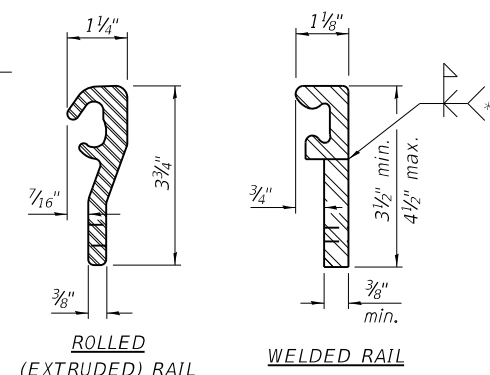
SHOWING WELDED RAIL JOINT

* $\frac{3}{8}$ " ϕ x 6" studs @ 6" cts. (alternate angled/bent studs with horizontal studs)

$\frac{3}{8}$ " ϕ threaded rods in $\frac{7}{16}$ " ϕ holes at ± 4 "-0" cts. for holding the proper joint opening based on the temperature during the deck pour. Place to miss studs. All rods shall be burned, or sawed off flush with the plates after concrete is set.

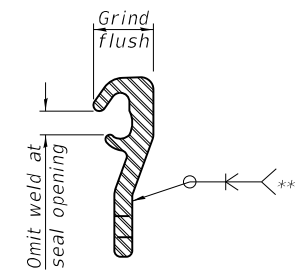
SECTION A-A

* Granular or solid flux filled headed studs conforming to Article 1006.32 of the Std. Specs., automatically end welded.



LOCKING EDGE RAILS

** Back gouge not required if complete joint penetration is verified by mock-up.



LOCKING EDGE RAIL SPLICE

The inside of the locking edge rail groove shall be free of weld residue. Rolled rail shown, welded rail similar.

BILL OF MATERIAL

| Item | Unit | Total |
|----------------------------|------|-------|
| Preformed Joint Strip Seal | Foot | 68 |

Notes:

The strip seal shall be made continuous and shall have a minimum thickness of $\frac{1}{4}$ ". The configuration of the strip seal shall match the configuration of the locking edge rails. Open or "webbed" strip seal gland configurations are not permitted. The gland shall be sized for a maximum rated movement of 4 inches.

The locking edge rails depicted are configured for typical applications and are conceptual only. The actual configuration of the locking edge rails and matching strip seal may vary from manufacturer to manufacturer provided they fit the application and meet the minimum anchorage shown. Flanged edge rails, however, will not be allowed.

The manufacturer's recommended installation methods shall be followed.

All steel components shall be galvanized after fabrication according to Article 520.03 of the Standard Specifications.

The Maximum space between locking edge rail segments shall be $\frac{3}{16}$ " and sealed with a suitable sealant; however, any rail joint within 10' measured perpendicular to the face of the curb or parapet shall be welded as shown in the locking edge rail splice detail.

Cost of parapet sliding plates, embedded plates, and anchorage studs included with Preformed Joint Strip Seal.

34" F-shape barrier shown, 42" F-shape similar as noted.

The concrete opening below the strip seal will vary based on the locking edge rail chosen by the Contractor. Deck and parapet lengths shown elsewhere in the plans are dimensioned to the concrete opening, not the joint opening, and are based on the rolled locking edge rail. If the Contractor elects to use a different locking edge rail, dimensional adjustments may be required. Such adjustments shall be at no additional cost to the State.

MODEL: Default
 FILE: M:\MS_E_Producer-aw-bentley.com\PHWD07\Documents\DOT Offices\Director_@Projects\78963\CADDData\CAD\Sheet\078963-Sheet5.dgn
 PROJECT: 78963

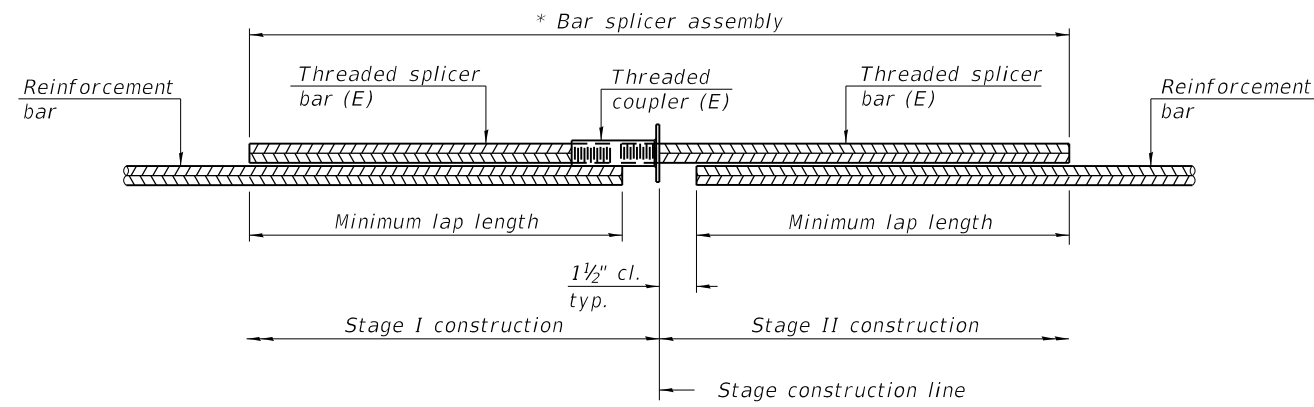
| | | |
|------------------------------|-------------------|-----------------|
| USER NAME = Derek.Snyder | DESIGNED - DRS | REVISED - _____ |
| PLOT SCALE = 100.0000' / in. | DRAWN - DRS | REVISED - _____ |
| PLOT DATE = 11/30/2022 | CHECKED - MAS | REVISED - _____ |
| | DATE - 10/17/2022 | REVISED - _____ |

STATE OF ILLINOIS
DEPARTMENT OF TRANSPORTATION

PREFORMED JOINT STRIP SEAL DETAILS
SN 041-0096

SCALE: _____ SHEET _____ OF _____ SHEETS STA. _____ TO STA. _____

| | | | | |
|---------------------------|--------------------------|-----------|--------------|-----------|
| F.A.P. RTE. | SECTION | COUNTY | TOTAL SHEETS | SHEET NO. |
| 726 | D9 BRIDGE OVERLAY 2023-6 | JEFFERSON | 18 | 14 |
| CONTRACT NO. 78963 | | | | |
| ILLINOIS FED. AID PROJECT | | | | |

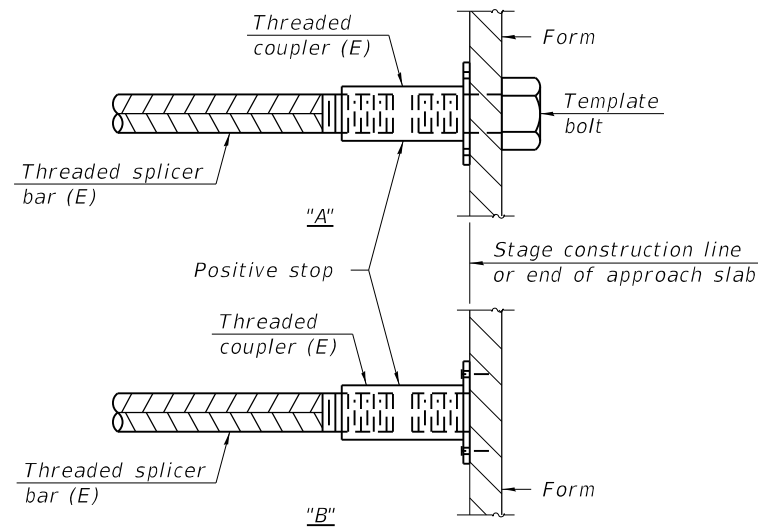


STANDARD BAR SPLICER ASSEMBLY PLAN
(All components shall be provided from one supplier)

Threaded splicer bar length = min. lap length + 1 1/2" + thread length

* Epoxy not required on Bar Splicer Assembly components used in conjunction with black bars.

| Location | Bar size | No. assemblies required | Minimum lap length |
|----------|----------|-------------------------|--------------------|
| Deck | #5 | 10 | 3'-2" |
| Deck | #7 | 16 | 5'-0" |
| | | | |
| | | | |

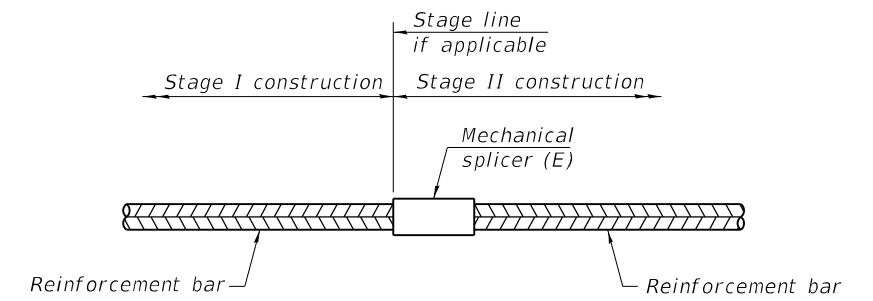


INSTALLATION AND SETTING METHODS

"A" : Set bar splicer assembly by means of a template bolt.

"B" : Set bar splicer assembly by nailing to wood forms or cementing to steel forms.

(E) : Indicates epoxy coating.



STANDARD MECHANICAL SPLICER

| Location | Bar size | No. assemblies required |
|----------|----------|-------------------------|
| Deck | #5 | 48 |
| Deck | #6 | 96 |
| | | |
| | | |

Notes:

Splicer bars shall be deformed with threaded ends and have a minimum 60 ksi yield strength.

All reinforcement shall be lapped and tied to the splicer bars.

Bar splicer assemblies shall be epoxy coated according to the requirements for reinforcement bars. See Section 508 of the Standard Specifications.

See approved list of bar splicer assemblies and mechanical splicers for alternatives.

BAR SPLICER ASSEMBLY DETAILS
IL 148 OVER BIG MUDDY RIVER
FAP 726 - D9 BRIDGE OVERLAY 2023-6
JEFFERSON COUNTY
STRUCTURE NO. 041-0096

BSD-1

1-1-2020

MODEL: Default
 FILE: Main.dwg
 PLOT: 11/30/2022 11:30:22 AM
 PLOT SCALE: 100.0000' / in.
 PLOT DATE: 11/30/2022

| | | |
|------------------------------|-------------------|-----------------|
| USER NAME = Derek.Snyder | DESIGNED - DRS | REVISED - _____ |
| | DRAWN - DRS | REVISED - _____ |
| PLOT SCALE = 100.0000' / in. | CHECKED - MAS | REVISED - _____ |
| PLOT DATE = 11/30/2022 | DATE - 10/17/2022 | REVISED - _____ |

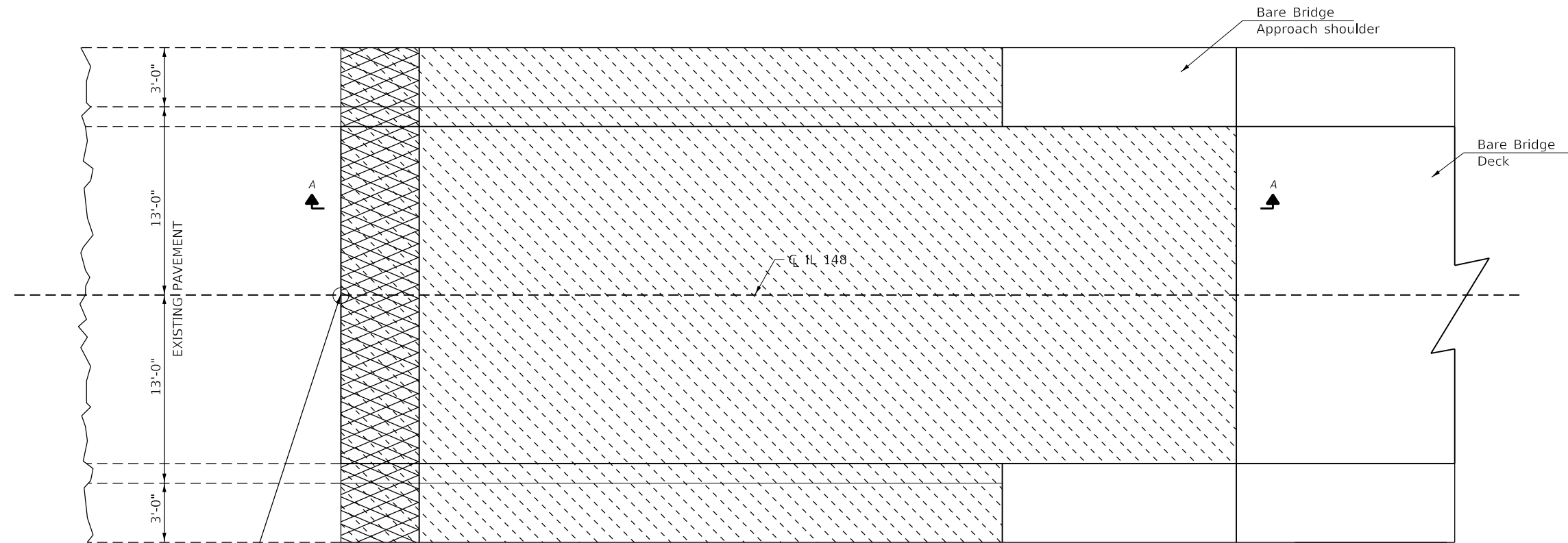
STATE OF ILLINOIS
DEPARTMENT OF TRANSPORTATION

BAR SPLICER ASSEMBLY AND MECHANICAL SPLICER DETAILS
SN 041-0096

SCALE: _____ SHEET ___ OF ___ SHEETS STA. _____ TO STA. _____

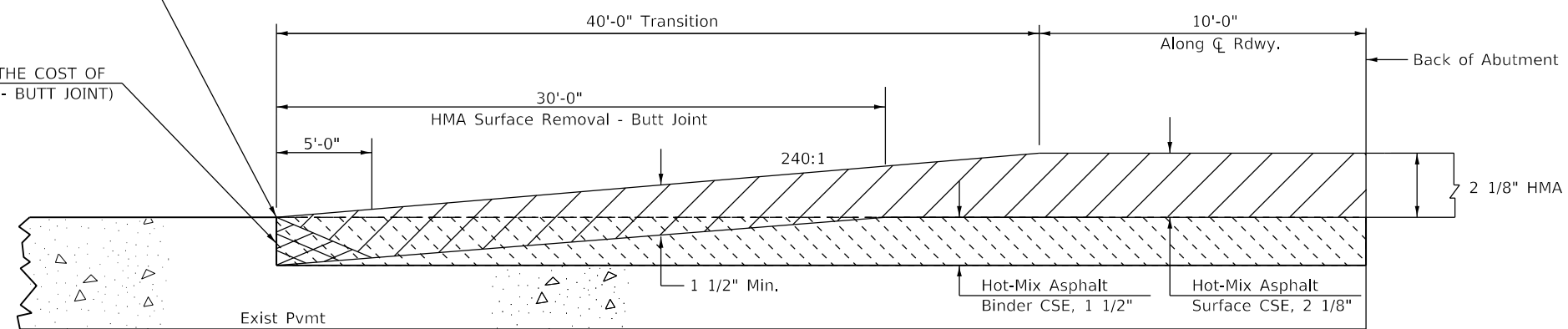
| F.A.P. RTE. | SECTION | COUNTY | TOTAL SHEETS | SHEET NO. |
|---------------------------|--------------------------|-----------|--------------------|-----------|
| 726 | D9 BRIDGE OVERLAY 2023-6 | JEFFERSON | 18 | 15 |
| | | | CONTRACT NO. 78963 | |
| ILLINOIS FED. AID PROJECT | | | | |

BUTT JOINT

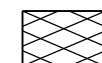


STA 107+03.60
STA 114+50.24

SAW CUT (INCLUDED IN THE COST OF
HMA SURFACE REMOVAL - BUTT JOINT)



SECTION A-A



Temporary Ramp



Milling
* Additional milling included in the quantity of hot mix asphalt surface removal - butt joint.

Model: Default
File: Main: p:\bridge-cw-behrtley.com\PHWDOT\Documents\DOT Offices\Bertley, B\Projects\78963\CADDData\CAD\Sheets\0978963\Sheets.dgn

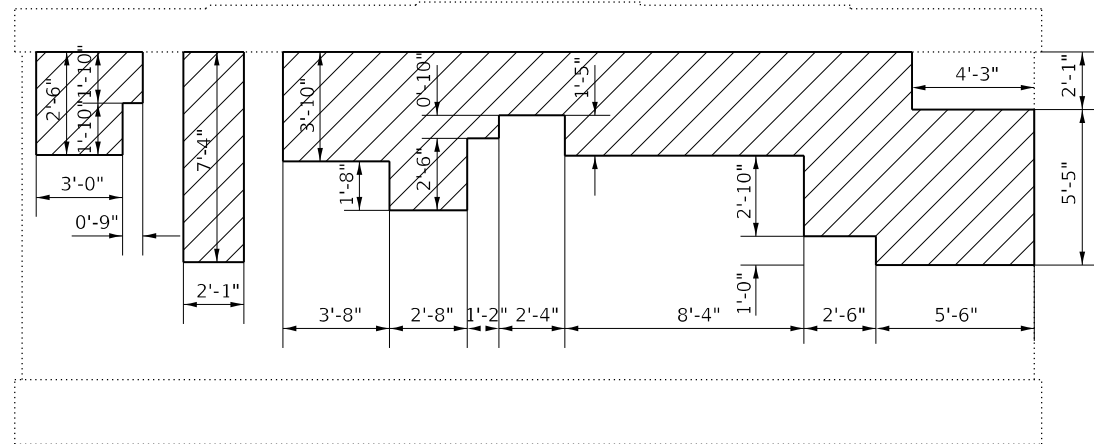
| | | |
|------------------------------|-------------------|-----------------|
| USER NAME = Derek.Snyder | DESIGNED - DRS | REVISED - _____ |
| | DRAWN - DRS | REVISED - _____ |
| PLOT SCALE = 100.0000' / in. | CHECKED - MAS | REVISED - _____ |
| PLOT DATE = 11/30/2022 | DATE - 10/17/2022 | REVISED - _____ |

**STATE OF ILLINOIS
DEPARTMENT OF TRANSPORTATION**

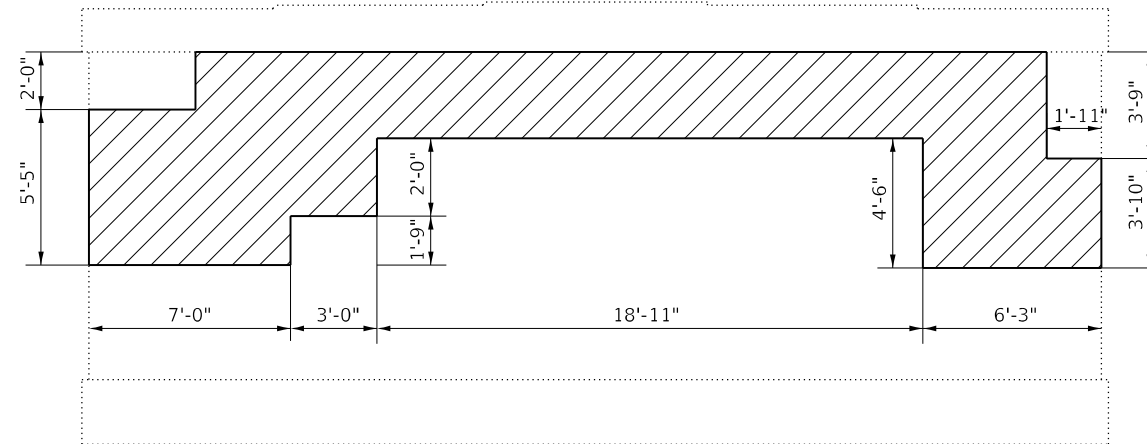
**BUTT JOINT DETAIL
SN 041-0096**

SCALE: _____ SHEET _____ OF _____ SHEETS STA. _____ TO STA. _____

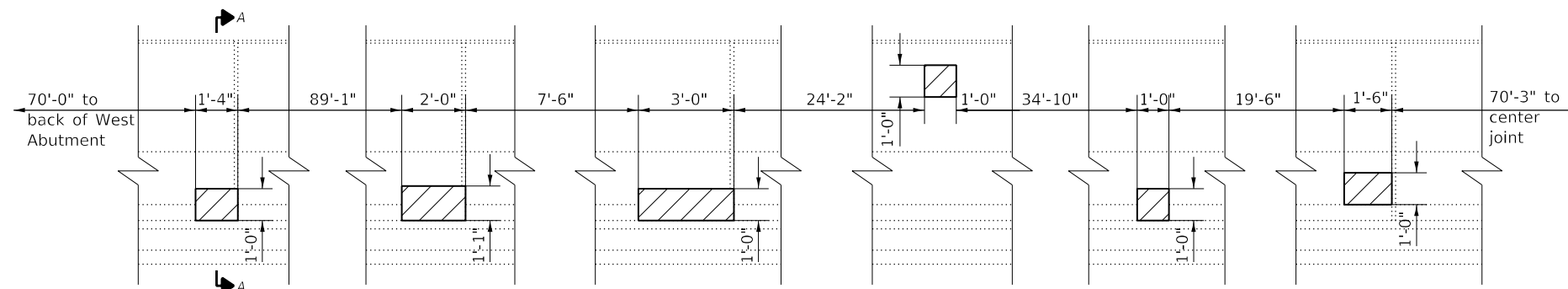
| F.A.P. RTE. | SECTION | COUNTY | TOTAL SHEETS | SHEET NO. |
|---------------------------|--------------------------|-----------|--------------|-----------|
| 726 | D9 BRIDGE OVERLAY 2023-6 | JEFFERSON | 18 | 16 |
| CONTRACT NO. 78963 | | | | |
| ILLINOIS FED. AID PROJECT | | | | |



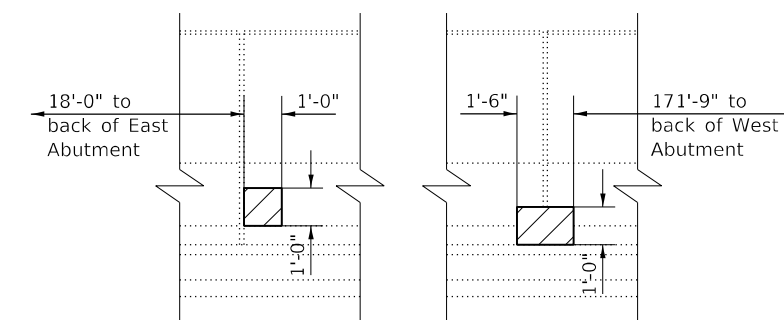
WEST ELEVATION AT PIER 4



EAST ELEVATION AT PIER 4

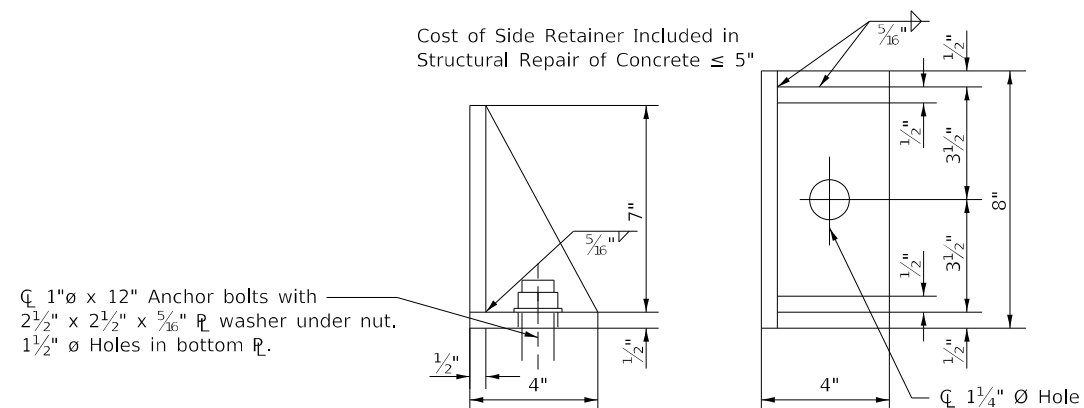


CONCRETE REPAIR AT NORTH PARAPET WALL



CONCRETE REPAIR AT SOUTH PARAPET WALL

 Structural Repair of Concrete $\leq 5"$



Side Retainer

Replace 3 Clips at West Abutment and 1 Broken Bolt
Replace 2 Clips at East Abutment

⌀ 1" \times 12" Anchor bolts with
2 1/2" \times 2 1/2" \times 5/16" ϕ washer under nut.
1 1/2" ϕ Holes in bottom ϕ .

BILL OF MATERIAL

| ITEM | UNIT | TOTAL |
|--|---------|-------|
| Structural Repair of Concrete (Depth $<$ 5 Inches) | Sq. Ft. | 313 |
| | | |
| | | |

MODEL: Default
 FILE: \\nas01-cv-bentley.com:PHWD07\Documents\DOT Offices\Drifco - 8\Projects\78963\CADD\Drawings\78963-Sheets.dgn

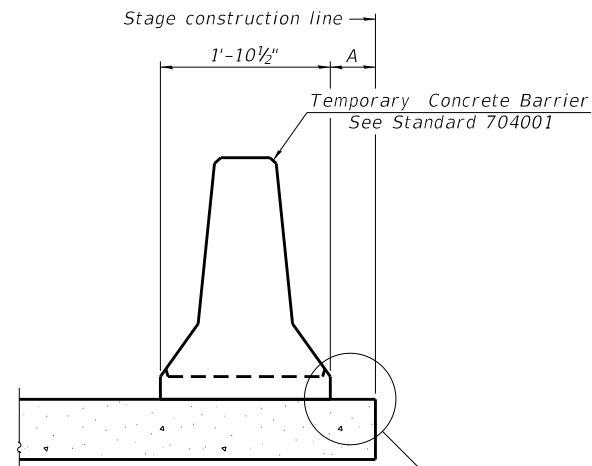
| | | |
|------------------------------|-------------------|-----------------|
| USER NAME = Derek.Snyder | DESIGNED - DRS | REVISED - _____ |
| PLOT SCALE = 100.0000' / in. | DRAWN - DRS | REVISED - _____ |
| PLOT DATE = 11/30/2022 | CHECKED - MAS | REVISED - _____ |
| | DATE - 10/17/2022 | REVISED - _____ |

**STATE OF ILLINOIS
DEPARTMENT OF TRANSPORTATION**

**STRUCTURAL REPAIR OF CONCRETE
SN 041-0096**

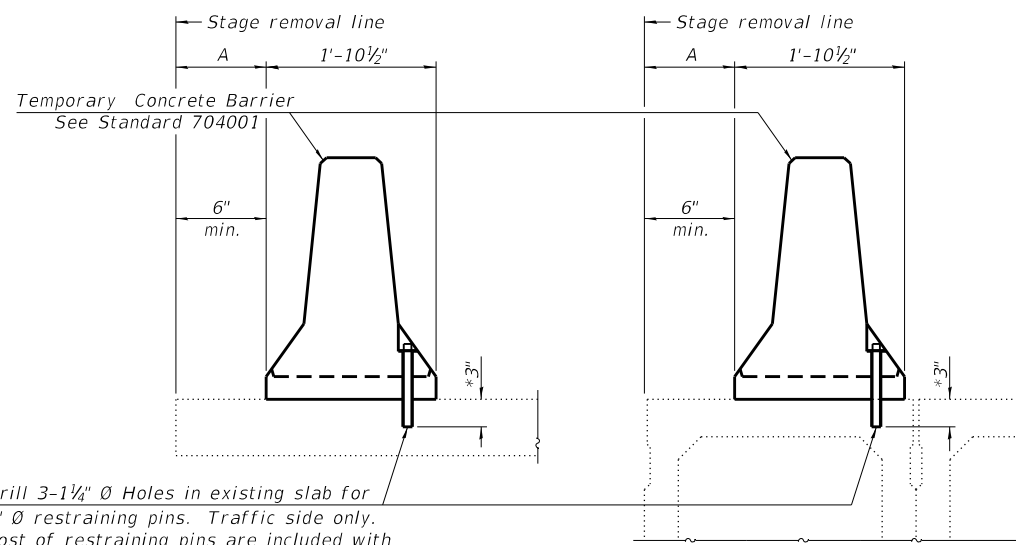
SCALE: _____ SHEET _____ OF _____ SHEETS STA. _____ TO STA. _____

| | | | | |
|--------------------|--------------------------|-----------|---------------------------|-----------|
| F.A.P. RTE. | SECTION | COUNTY | TOTAL SHEETS | SHEET NO. |
| 726 | D9 BRIDGE OVERLAY 2023-6 | JEFFERSON | 18 | 17 |
| CONTRACT NO. 78963 | | | ILLINOIS FED. AID PROJECT | |



When "A" is 3'-1" or less, the temporary concrete barrier shall be restrained to the new slab according to Detail I, II or III. No restraint is required when "A" is greater than 3'-1".

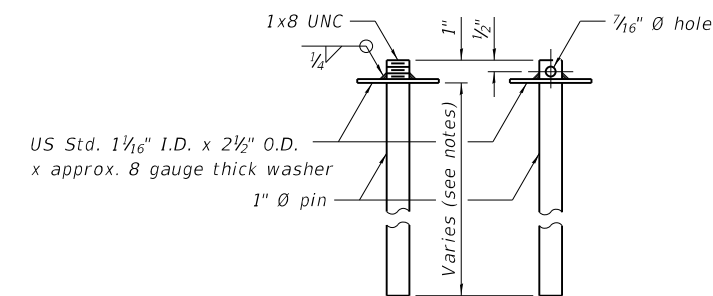
NEW SLAB OR NEW DECK BEAM



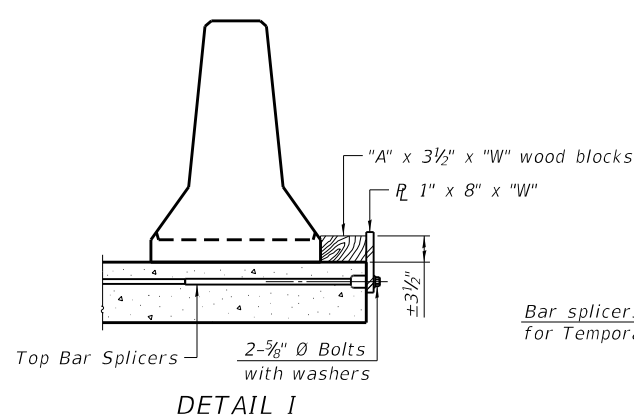
Drill 3-1/4" Ø Holes in existing slab for 1" Ø restraining pins. Traffic side only. Cost of restraining pins are included with Temporary Concrete Barrier. No restraint is required when "A" is greater than 3'-1".

* When hot-mix asphalt wearing surface is present, embedment shall be 3" plus the wearing surface depth.

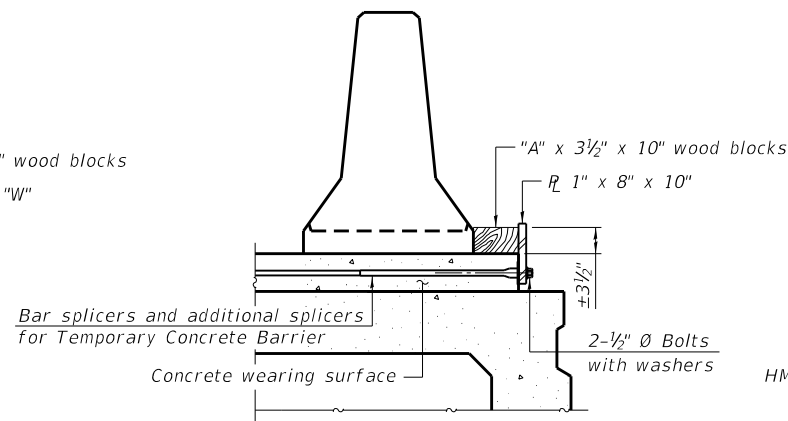
EXISTING SLAB
EXISTING DECK BEAM
SECTIONS THRU SLAB OR DECK BEAM



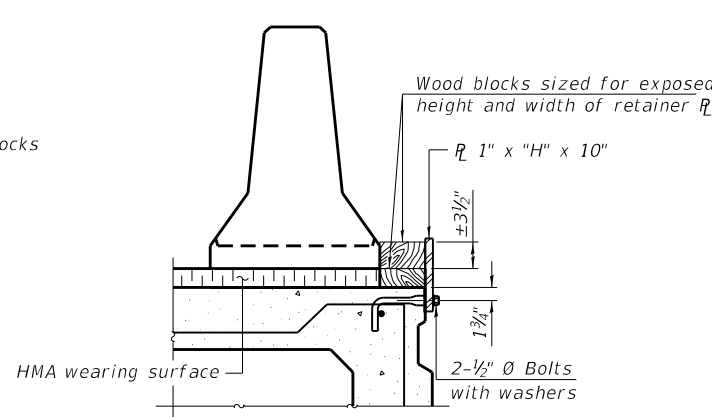
RESTRAINING PIN



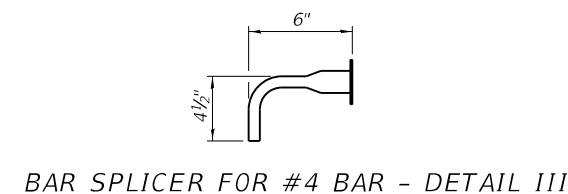
DETAIL I



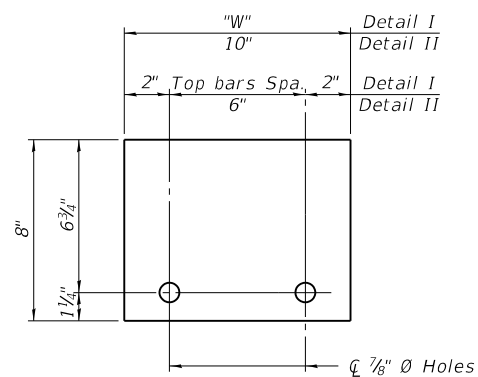
DETAIL II



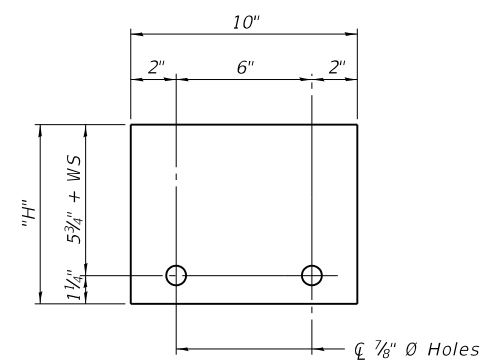
DETAIL III



BAR SPLICER FOR #4 BAR - DETAIL III



STEEL RETAINER R 1" x 8" x "W"
(Detail I and II)



STEEL RETAINER R 1" x "H" x 10"
(Detail III)

Notes:
 Cost of retainer assembly is included with Temporary Concrete Barrier.
 A retainer assembly shall be located at the approximate C of each temporary concrete barrier.
 The retainer plate shall not be removed until the concrete on the adjacent stage is ready to be poured. For Detail III applications the retainer plate shall not be removed until just prior to placing the adjacent beam.
 When the 'A' dimension is less than 1 1/2", the wood block shall be omitted and the barrier shall be placed in direct contact with the steel retainer plate. For deck beam applications the minimum required 'A' distance is 6" to accommodate the shear key clamping device.

Detail I - Installation for a new bridge deck or bridge slab.
Detail II - Installation for a new deck beam with an initial concrete wearing surface. Additional bar splicers shall be provided at 6'-0" centers and paired with the bar splicers of the concrete wearing surface reinforcement to accommodate the installation of the retainer assemblies. The cost of the additional bar splicers is included with the concrete wearing surface.
Detail III - Installation for a new deck beam with no initial wearing surface or with an initial hot-mix asphalt (HMA) wearing surface present. The deck beam directly beneath the temporary concrete barrier shall be fabricated with bar splicer inserts in the side of the beam, as detailed, to accommodate the installation of the retainer assemblies. A pair of bar splicers, 6" apart, shall be placed at 6'-0" centers along the length of the beam. The cost of the bar splicers is included with the deck beam.

RAILING CRITERIA

| | |
|----------------------|-----|
| NCHRP 350 Test Level | 3 |
| Railing Weight (plf) | 440 |

R-27 10-12-2021

STATE OF ILLINOIS
DEPARTMENT OF TRANSPORTATION

TEMPORARY CONCRETE BARRIER
STRUCTURE 041-0096

| | | | | |
|--------------------|--------------------------|-----------|---------------------------|-----------|
| F.A.P. RTE. | SECTION | COUNTY | TOTAL SHEETS | SHEET NO. |
| 726 | D9 BRIDGE OVERLAY 2023-6 | JEFFERSON | 18 | 18 |
| CONTRACT NO. 78963 | | | ILLINOIS FED. AID PROJECT | |

SCALE: _____ SHEET _____ OF _____ SHEETS STA. _____ TO STA. _____

MODEL: Default
 FILE: MainE:proj\blades-cw\benitez.com\PHWDOT\Documents\DOT Offices\Drifelt: 8\Projects\78963\CADDData\CAD\Sheets\078963-Sheets.dgn
 PROJECT: 78963