

INDEX OF SHEETS 01-20-2023 LETTING ITEM 072

SHEET NO.	DESCRIPTION
1	COVER SHEET
2	SCHEDULE OF QUANTITIES
3	PROPOSED TYPICAL SECTIONS
4	DETAIL SHEET
5	MISC DETAIL
6-9	PLAN SHEETS

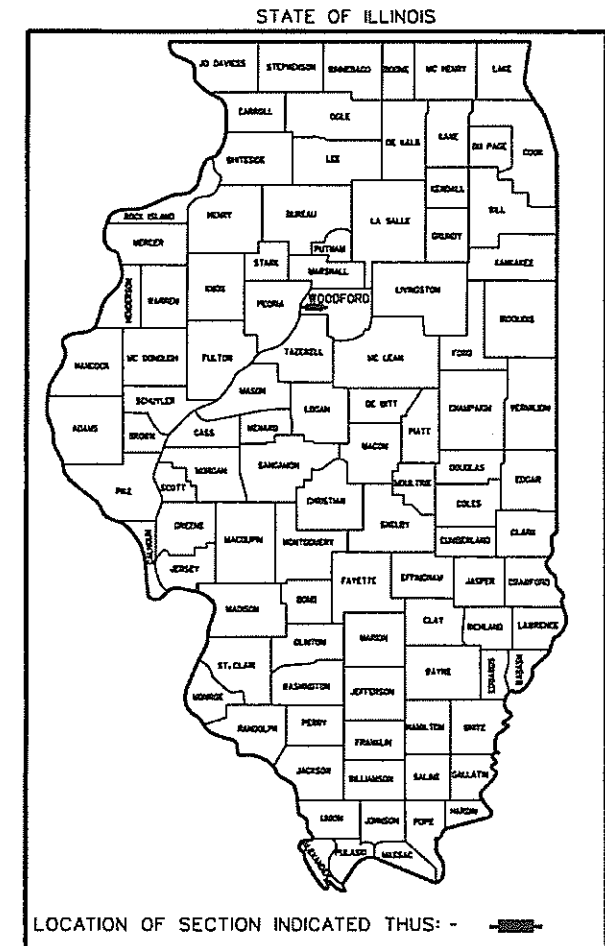
IDOT HIGHWAY STANDARDS

- 000001-08 STANDARD SYMBOLS, ABBREVIATIONS AND PATTERNS
- 701006-05 OFF ROAD OPERATIONS, 2L, 2W, 15' TO 24' FROM EDGE OF PAVEMENT
- 701011-04 OFF ROAD MOVING OPERATIONS, 2L, 2W, DAY ONLY
- 701201-05 LANE CLOSURE, 2L, 2W, DAY ONLY, FOR SPEEDS >=45MPH
- 701301-04 LANE CLOSURE, 2L, 2W, SHORT TIME OPERATION
- 701306-04 LANE CLOSURE, 2L, 2W, SLOW MOVING OPERATION, DAY ONLY, >=45 MPH
- 701901-08 TRAFFIC CONTROL DEVICES
- 781001-04 TYPICAL APPLICATION, RAISED REFLECTIVE PAVEMENT MARKINGS
- BLR22-7 TYPICAL APPLICATION OF TRAFFIC CONTROL DEVICES FOR CONSTRUCTION ON RURAL LOCAL HIGHWAYS
- BLR 24-2 MAIL BOX TURNOUT FOR LOCAL ROADS

STATE OF ILLINOIS  
DEPARTMENT OF TRANSPORTATION  
DIVISION OF HIGHWAYS  
PLANS FOR PROPOSED  
LOCAL AGENCY IMPROVEMENT  
FEDERAL-AID SECONDARY PROJECT

COVID RELIEF FUNDS  
F.A.S. ROUTE 2360 (SANTA FE TRAIL)  
COUNTY HIGHWAY 25  
PROJECT NO. 6RNV(674)  
JOB NO. C-94-007-22  
SECTION 21-00058-00-RS  
WOODFORD COUNTY

F.A.S. RTE.	SECTION	COUNTY	TOTAL SHEETS	SHEET NO.
2360	21-00058-00-RS	WOODFORD	9	1



SUMMARY OF QUANTITIES

ITEM #	DESCRIPTION	UNIT	QUANTITY
40200800	AGGREGATE SURFACE COURSE, TY. B	TON	74
40600295	POLYMERIZED BITUMINOUS MATERIAL (TACK COAT)	POUND	45,706
40600370	LONGITUDINAL JOINT SEALANT	FOOT	22,553
40600982	HOT-MIX ASPHALT SURFACE REMOVAL - BUTT JOINT	SQ YD	1,665
40600990	TEMPORARY RAMP	SQ YD	209
40604150	P HOT-MIX ASPHALT SURFACE COURSE, IL-9.5, MIX 'C', N50	TON	5,211
*40800050	INCIDENTAL HOT-MIX ASPHALT SURFACING	TON	124
*44000155	HMA SURFACE REMOVAL, 1-1/2"	SQ YD	61,801
*X4811300	AGGREGATE SHOULDERS, TY. B (SPL)	TON	1,991
67100100	MOBILIZATION	L SUM	1
*70100460	TRAFFIC CONTROL AND PROTECTION, STANDARD 701306	L SUM	1
70300100	SHORT-TERM PAVEMENT MARKING	FOOT	6,766
70300150	SHORT TERM PAVEMENT MARKING REMOVAL	SQ FT	2,255
78000100	PAINT PAVEMENT MARKING LINE, 4"	FOOT	83,464
78100100	RAISED REFLECTIVE PAVEMENT MARKER	EACH	282
78300200	RAISED REFLECTIVE PAVEMENT MARKER REMOVAL	EACH	282
Z0034105	MATERIAL TRANSFER DEVICE	TON	4,947

#SEE SPECIAL PROVISIONS Δ SPECIALTY ITEMS

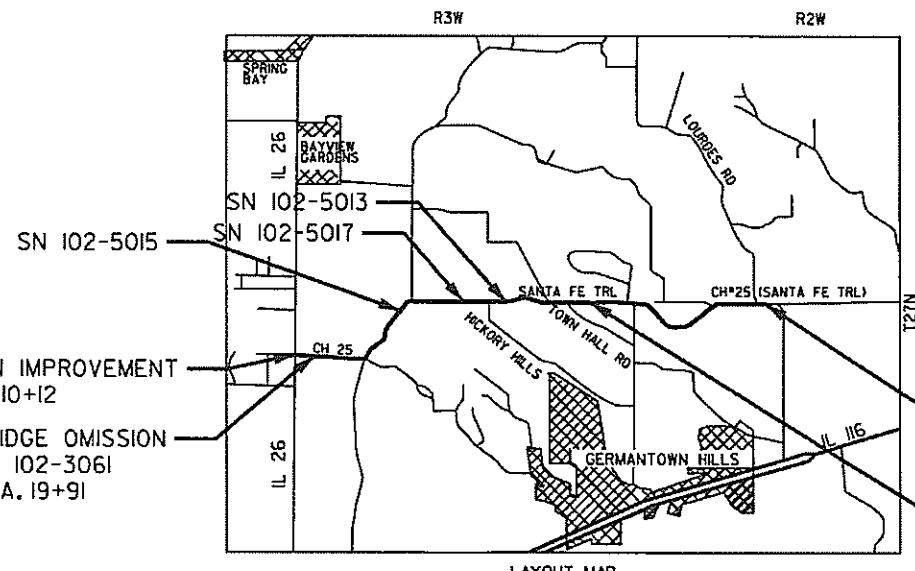
DESIGN INFORMATION

LOCAL ROADS FUNCTIONAL CLASS:  
MAJOR COLLECTOR  
2022 ADT = 1400 (7% TRUCKS)  
DESIGN SPEED: 40 MPH  
DESIGN GUIDELINES: RURAL  
VARIANCES GRANTED: NONE  
COMMITMENTS: NONE



REDUCED SIZED PLANS WILL NOT CONFORM TO STANDARD SCALES. IN MAKING MEASUREMENTS ON REDUCED PLANS, THE ABOVE SCALES MAY BE USED.

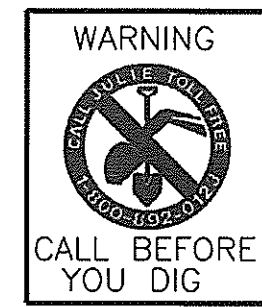
J.U.L.I.E.  
JOINT UTILITY LOCATION INFORMATION FOR EXCAVATION  
1-800-892-0123



IMPROVEMENT CONSISTS OF MILL & OVERLAY OVER AN EXISTING HMA ROADWAY, INCLUDING AGGREGATE SHOULDER IMPROVEMENTS.

UTILITIES  
(TO BE DETERMINED)

GROSS LENGTH OF SECTION 22,688 FT. (4.297 MI)  
NET LENGTH OF SECTION - 22,553 FT. (4.271 MI)



OMISSIONS

- BRIDGE OMISSION (STRUCTURE #102-3061) STA. 19+91 TO STA. 20+64, 73 FEET
- BRIDGE OMISSION (STRUCTURE #102-3156) STA. 161+66 TO STA. 162+28, 62 FEET
- BRIDGE OMISSION SN 102-3156 STA. 161+97

APPROVED 10/13 2022  
*Calpe*  
COUNTY ENGINEER

PASSED 10-25- 2022  
*[Signature]*  
DISTRICT FOUR ENGINEER OF LOCAL ROADS & STREETS

Releasing For Bid Based on Limited Review OCTOBER 25 2022  
*Ronald A. Barnett*  
REGION THREE ENGINEER  
STATE OF ILLINOIS  
DEPARTMENT OF TRANSPORTATION

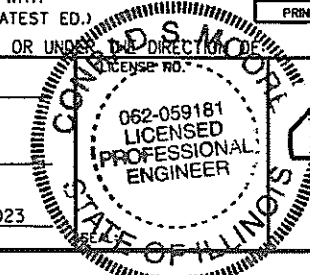
PRINTED BY THE AUTHORITY OF THE STATE OF ILLINOIS

PLANS DEVELOPED IN ACCORDANCE WITH THE IDOT LOCAL ROADS MANUAL (LATEST ED.) THESE PLANS HAVE BEEN PREPARED BY OR UNDER THE DIRECTION OF

DATE: 10/13/2022

SIGNED: *Calpe*

LICENSE EXPIRES: NOVEMBER 30, 2023



WOODFORD COUNTY HIGHWAY DEPARTMENT  
CONRAD MOORE, P.E., COUNTY ENGINEER  
301S. Main St.  
Roanoke, IL 61561  
TEL: 309-923-2891  
FAX: 309-467-7220

PLOT DATE: 10/13/2022  
 FILE NAME: V:\Illinois\21-00058-00-RS ISF Treat\Sign\01-COVER.dgn  
 PLOT SCALE: 1/8"=1'-0"  
 PLOT NAME: 036277-00D

F.A.S. RTE.	SECTION	COUNTY	TOTAL SHEETS	SHEET NO.
2360	21-00058-00-RS	WOODFORD	9	2
STA. 10+12 TO STA. 237+00				
FED. ROAD DIST. NO. 4			ILLINOIS FED. AID PROJECT	

ENTRANCE#	TYPE	STATION	WIDTH (FT)	SURFACE	40200800 AGG SURFACE COURSE, TY B TOTAL (TONS)	40800050 INCIDENTAL HMA SURFACING TOTAL (TONS)
1	FIELD ENTRANCE	12+08	19	AGG	1.4	
2	COMMERCIAL ENTRANCE	12+26	30	ASPH		1.9
3	PRIVATE ENTRANCE	16+66	28	AGG	1.8	
4	FIELD ENTRANCE	17+00	21	AGG	1.5	
5	PRIVATE ENTRANCE	17+32	10	AGG	1.0	
6	PRIVATE ENTRANCE	18+25	16	AGG	1.3	
7	PRIVATE ENTRANCE	19+19	13	AGG	1.2	
8	PRIVATE ENTRANCE	22+00	14	AGG	1.2	
9	FIELD ENTRANCE	22+30	17	AGG	1.3	
10	PRIVATE ENTRANCE	22+97	15	AGG	1.3	
11	PRIVATE ENTRANCE	23+00	9	AGG	1.0	
12	FIELD ENTRANCE	29+63	25	AGG	1.7	
13	FIELD ENTRANCE	37+20	16	AGG	1.3	
14	FIELD ENTRANCE	37+80	20	AGG	1.5	
15	PRIVATE ENTRANCE	46+00	14	ASPH		1.2
16	PRIVATE ENTRANCE	51+00	40	ASPH		2.3
17	OMITTED					
18	FIELD ENTRANCE	51+86	33	AGG	2.0	
19	COMMERCIAL ENTRANCE	52+11	30	AGG	1.9	
20	FIELD ENTRANCE	59+70	21	AGG	1.5	
21	FIELD ENTRANCE	59+70	22	AGG	1.6	
22	FIELD ENTRANCE	69+85	13	AGG	1.2	
23	FIELD ENTRANCE	69+90	21	AGG	1.5	
24	FIELD ENTRANCE	77+61	18	AGG	1.4	
25	FIELD ENTRANCE	82+17	16	AGG	1.3	
26	PRIVATE ENTRANCE	82+84	17	ASPH		1.3
27	FIELD ENTRANCE	86+47	17	AGG	1.3	
28	FIELD ENTRANCE	87+59	17	AGG	1.3	
29	PRIVATE ENTRANCE	92+66	20	ASPH		1.4
30	PRIVATE ENTRANCE	98+23	22	ASPH		1.5
31	PRIVATE ENTRANCE	99+70	31	ASPH		1.9
32	PRIVATE ENTRANCE	102+77	20	AGG	1.5	
33	FIELD ENTRANCE	103+81	24	AGG	1.6	
34	FIELD ENTRANCE	107+52	12	AGG	1.1	
35	PRIVATE ENTRANCE	109+95	12	AGG	1.1	
36	PRIVATE ENTRANCE	115+61	18	ASPH		1.4
37	PRIVATE ENTRANCE	116+71	18	ASPH		1.4
38	PRIVATE ENTRANCE	120+21	21	ASPH		1.5
39	PRIVATE ENTRANCE	120+45	21	ASPH		1.5

40	PRIVATE ENTRANCE	120+58	16	ASPH		1.3
41	PRIVATE ENTRANCE	122+53	40	ASPH		2.3
42	PRIVATE ENTRANCE	125+18	12	ASPH		1.1
43	PRIVATE ENTRANCE	127+15	14	ASPH		1.2
44	PRIVATE ENTRANCE	128+18	13	ASPH		1.2
45	PRIVATE ENTRANCE	133+04	26	ASPH		1.7
46	PRIVATE ENTRANCE	137+55	30	ASPH		1.9
47	PRIVATE ENTRANCE	141+36	14	ASPH		1.2
48	PRIVATE ENTRANCE	143+35	12	ASPH		1.1
49	PRIVATE ENTRANCE	143+63	11	ASPH		1.1
50	PRIVATE ENTRANCE	143+88	13	ASPH		1.2
51	PRIVATE ENTRANCE	144+64	13	CONC.		
52	PRIVATE ENTRANCE	144+66	23	AGG	1.6	
53	FIELD ENTRANCE	147+20	17	AGG	1.3	
54	FIELD ENTRANCE	151+10	18	AGG	1.4	
55	FIELD ENTRANCE	151+16	22	AGG	1.6	
56	FIELD ENTRANCE	160+00	16	AGG	1.3	
57	FIELD ENTRANCE	160+28	12	AGG	1.1	
58	PRIVATE ENTRANCE	164+18	15	AGG	1.3	
59	PRIVATE ENTRANCE	170+23	30	ASPH		1.9
60	OMITTED					
61	PRIVATE ENTRANCE	176+72	15	ASPH		1.2
62	FIELD ENTRANCE	183+00	14	AGG	1.2	
63	FIELD ENTRANCE	183+07	14	AGG	1.2	
64	FIELD ENTRANCE	202+18	17	AGG	1.3	
65	FIELD ENTRANCE	202+49	15	AGG	1.3	
66	FIELD ENTRANCE	204+28	16	AGG	1.3	
67	FIELD ENTRANCE	205+32	15	AGG	1.3	
68	FIELD ENTRANCE	209+83	16	AGG	1.3	
69	PRIVATE ENTRANCE	210+15	15	AGG	1.3	
70	PRIVATE ENTRANCE	213+84	14	AGG	1.2	
71	PRIVATE ENTRANCE	214+87	20	ASPH		1.4
72	FIELD ENTRANCE	216+41	18	ASPH		1.4
73	FIELD ENTRANCE	218+75	19	AGG	1.4	
74	FIELD ENTRANCE	221+35	17	AGG	1.3	
75	FIELD ENTRANCE	222+98	13	AGG	1.2	
76	PRIVATE ENTRANCE	223+27	26	ASPH		1.7
77	PRIVATE ENTRANCE	224+80	48	AGG	2.7	
78	PRIVATE ENTRANCE	225+51	50	ASPH		2.7
79	PRIVATE ENTRANCE	227+26	23	AGG	1.6	
80	PRIVATE ENTRANCE	227+55	23	AGG	1.6	
81	FIELD ENTRANCE	228+70	16	AGG	1.3	
82	FIELD ENTRANCE	231+17	37	AGG	2.2	
83	PRIVATE ENTRANCE	232+37	25	ASPH		1.7
84	FIELD ENTRANCE	232+74	22	AGG	1.6	
MAILBOX TURNOUTS (PER STANDARD BLR 24-I) 33 @ 2.4 TONS EACH =						79.2
TOTAL =						73.7
USE						123.8
						74
						124

STATION TO	STATION	LENGTH (FT)	TONS
10+12	19+91	979	215
20+64	36+00	1,536	337
36+00	161+66	12,566	2,756
162+28	237+00	7,472	1,639
TOTAL =			5,211

40604150  
POLYMERIZED HMA SURFACE, IL-9.5, MIX 'C', N50

STATION TO	STATION	LENGTH (FT)	POUNDS
10+12	19+91	979	1,840
20+64	36+00	1,536	2,888
36+00	161+66	12,566	23,624
162+28	237+00	7,472	14,047
TOTAL =			45,706

40600295  
POLYMERIZED BITUMINOUS MATERIAL (TACK COAT)

44000155 HMA SURFACE REMOVAL, 1-1/2"			
STATION TO	STATION	AREA (SY)	SY
10+62	19+41	2,295	
21+14	161+16	36,561	
162+78	236+50	19,249	
*ENTRANCES		VARIOUS	1,476
*SIDE ROAD			
WOODLAND KNOLLS	41+39	222	
UPPER SPR BAY RD	74+36	222	
HICKORY HILLS RD	108+61.5	222	
TOWN HALL RD	136+30.13	222	
TOWN HALL RD	145+78	222	
LAKE SANTA FE RD	175+43	222	
FANDEL RD	176+68	222	
LOURDES CHURCH RD	190+40	222	
LOURDES CHURCH RD	212+00	222	
LOURDES RD. (CH 19)	235+50	222	
TOTAL =			61,801 SY

X4811300 AGGREGATE SHOULDERS, TYPE B (SPL)			
STATION TO	STATION	LENGTH (FT)	TOTAL TONS
10+12	36+00	2515	214.8
36+00	40+76	476	40.7
40+76	41+74	98	8.4
41+74	74+00	3226	275.6
74+00	74+96	96	8.2
74+96	108+24	3328	284.2
108+24	109+35	111	9.5
109+35	135+82	2647	226.1
135+82	136+89	107	9.1
136+89	145+46	857	73.2
145+46	146+43	97	8.3
146+43	175+12	2807	239.7
175+12	175+92	80	6.8
175+92	189+87	1395	119.1
189+87	190+68	81	6.9
190+68	211+88	2120	181.1
211+88	212+83	95	8.1
212+83	237+00	2417	206.5
ADD QUANTITY FOR SIDE ROADS			
IO @ 6.41 TONS EACH =			64.1
TOTAL =			1,990.4
USE			1,991

GENERAL NOTES  
1. COMMITMENTS: NONE  
2. ENVIRONMENTAL REVIEWS  
PRIOR TO THE USE OF ANY PROPOSED BORROW AREAS, USE AREAS (TEMPORARY ACCESS ROADS, DETOURS, RUN-AROUNDS, ETC) AND/OR WASTE AREAS, THE CONTRACTOR SHALL FILE THE REQUIRED ENVIRONMENTAL RESOURCE REQUEST SURVEYS ACCORDING TO SECTION 107.22 OF THE STANDARD SPECIFICATIONS. THESE SURVEYS ARE REQUIRED IN ORDER FOR THE DEPARTMENT TO CONDUCT CULTURAL AND BIOLOGICAL RESOURCE SURVEYS FOR THE PROPOSED SITE.  
THE REQUIRED ENVIRONMENTAL RESOURCE DOCUMENTATION SHALL INCLUDE THE FOLLOWING:

- BDE FORM 2289 (BORROW SITE REVIEW)
- BDE FORM 2290 (WASTE/USE AREA REVIEW)
- A LOCATION MAP SHOWING THE SIZE LIMITS AND LOCATION OF THE USE AREA
- COLOR PHOTOGRAPHS DEPICTING THE USE AREA
- BORROW AREA ENTRY AGREEMENT FORM - D4 P101

PRIOR TO ANY WASTE MATERIALS BEING REMOVED FROM THE CONSTRUCTION SITE THE REQUIRED ENVIRONMENTAL RESOURCE SURVEYS SHALL BE OBTAINED AND FILED BY THE CONTRACTOR. EXCESS WASTE PRODUCTS REMOVED FROM THE CONSTRUCTION SITE SHALL BE DISPOSED OF AS REQUIRED IN SECTION 202.03 OF THE STANDARD SPECIFICATIONS.

ANY PROTRUDING METAL BARS SHALL BE REMOVED PRIOR TO THE DISPOSAL OF BROKEN CONCRETE AT APPROVED DISPOSAL SITES.

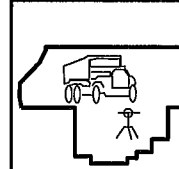
PLEASE NOTE THAT A MINIMUM OF FOUR WEEKS SHALL BE ALLOWED FOR THE DISTRICT TO OBTAIN THE REQUIRED WASTE SITE ENVIRONMENTAL CLEARANCES AND SIX WEEKS FOR THE REQUIRED BORROW SITE ENVIRONMENTAL CLEARANCES.

- PAVING SURFACE COURSE  
CONTINUOUS PAVING OPERATIONS ON THE MAIN ROADWAY SHALL BE MAINTAINED AT ALL TIMES DURING THE CONSTRUCTION OF THE HOT-MIX ASPHALT SURFACE. NO INTERRUPTIONS FOR SIDE ROADS, ENTRANCES, TURN LANES, ETC. WILL BE ALLOWED.
- CROSSING EXISTING STRUCTURES WITH EQUIPMENT  
BASED UPON ANALYSIS BY THE IDOT BRIDGE OFFICE, THE FOLLOWING STRUCTURES, SN 102-3061, SN 102-3156, SN 102-5013, SN 102-5015 AND SN 102-5017 HAVE ADEQUATE CAPACITY FOR A LOADED MTD, UNLOADED MTD, AND MILLING MACHINE. NO OTHER VEHICLES OR EQUIPMENT MAY BE ALLOWED ON THE STRUCTURE WHILE EACH INDIVIDUAL PIECE OF EQUIPMENT IS CROSSING SAID STRUCTURES.

78001100 PAINT PAVEMENT MARKING LINE, 4"			
STATION - STATION	LENGTH (FT)	DESCRIPTION	NET LENGTH (FT)
10+12 - 27+81	1,769	SKIP DASH EB & WB	443
27+81 - 38+28	1,047	SKIP DASH WB	262
27+81 - 38+28	1,047	NO PASS EB	1,047
38+28 - 75+15	3,687	NO PASS EB & WB	7,374
75+15 - 92+10	1,695	SKIP DASH EB	424
75+15 - 92+10	1,695	NO PASS WB	1,695
92+10 - 109+24	1,714	NO PASS EB & WB	3,428
109+24 - 119+60	1,036	SKIP DASH EB	259
109+24 - 119+60	1,036	NO PASS WB	1,036
119+60 - 147+46	2,786	NO PASS EB & WB	5,572
147+46 - 156+60	914	SKIP DASH EB	229
147+46 - 156+60	914	NO PASS WB	914
156+60 - 165+60	900	NO PASS EB	900
156+60 - 165+60	900	SKIP DASH WB	225
165+60 - 237+00	7,140	NO PASS EB & WB	14,280
10+12 - 237+00	22,688	EDGE LINES	45,376
TOTAL =			83,464

40600982 HMA SURFACE REMOVAL - BUTT JOINT				40600990 TEMPORARY RAMP
STATION TO	STATION	AREA (SY)	SY	AREA (SY)
10+12	10+62	400	44	
19+41	19+91	131	11	
20+64	21+14	131	11	
161+16	161+66	131	11	
162+28	162+78	131	11	
236+50	237+00	131	11	
*SIDE ROAD				
WOODLAND KNOLLS	41+39	61	11	
UPPER SPR BAY RD	74+36	61	11	
HICKORY HILLS RD	108+61.5	61	11	
TOWN HALL RD	136+30.13	61	11	
TOWN HALL RD	145+78	61	11	
LAKE SANTA FE RD	175+43	61	11	
FANDEL RD	176+68	61	11	
LOURDES CHURCH RD	190+40	61	11	
LOURDES CHURCH RD	212+00	61	11	
LOURDES RD. (CH 19)	235+50	61	11	
TOTAL =			1,665 SY	209 SY

STATION TO STATION	SPACING	70300100 SHORT TERM PAVEMENT MARKING	70300150 SHORT TERM PAVEMENT MARKING REMOVAL	78100100 RAISED REFLECTIVE PAVEMENT MARKER	78300200 RAISED REFLECTIVE PAVEMENT MARKER REMOVAL
10+12 - 237+00	22,553 FT. @ 40 FT	2255.3	751.8	282 EA	282 EA
3 APPLICATIONS =		6766 FT	2,255 SQ FT		

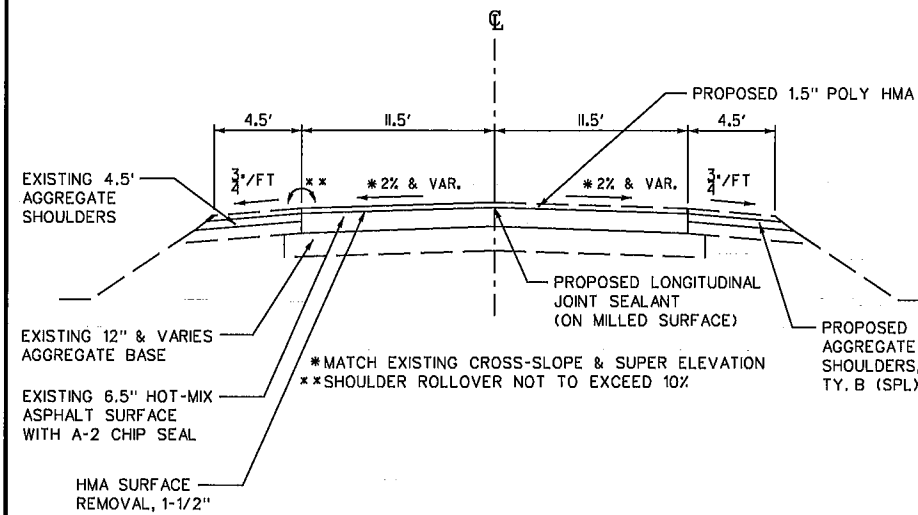


**WOODFORD COUNTY HIGHWAY DEPARTMENT**  
CONRAD MOORE, P.E., COUNTY ENGINEER  
301 S. Main St.  
Roanoke, IL 61561  
TEL: 309-923-2891  
FAX: 309-467-7220

F.A.S. RTE. 2360  
SECTION 21-00058-00-RS  
SANTA FE TRAIL (C.H.25)  
**SCHEDULE OF QUANTITIES**  
SCALE: NONE  
DATE: 10/13/22  
DRAWN BY: CSM  
CHECKED BY: RLK

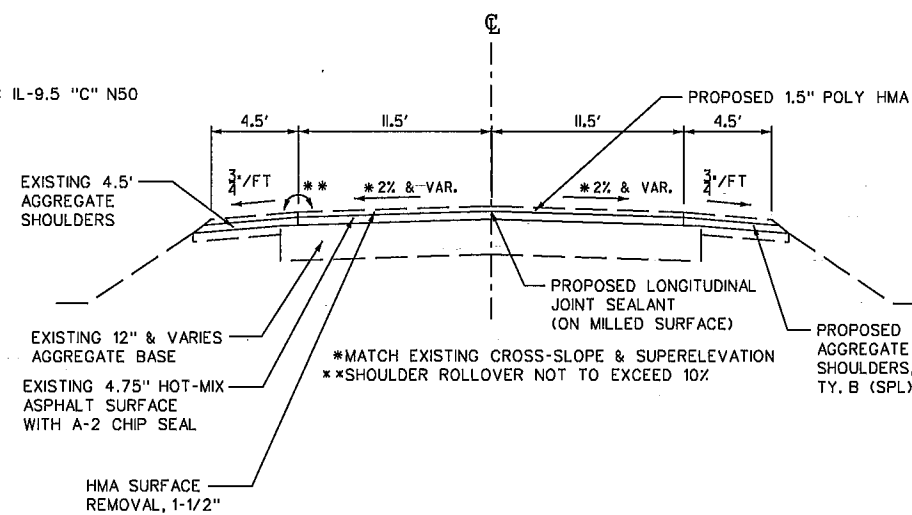
PLOT DATE = 10/24/2022  
FILE NAME = Y:\Country\21-00058-00-RS (SF Trail)\dgn\02-TABLES.dgn  
PLOT SCALE = 1:10000 / 7"  
USER NAME = Moorec

F.A.S. RTE.	SECTION	COUNTY	TOTAL SHEETS	SHEET NO.
2360	21-00058-00-RS	WOODFORD	9	3
STA. 10+12 TO STA. 237+00				
FED. ROAD DIST. NO. 4		ILLINOIS FED. AID PROJECT		



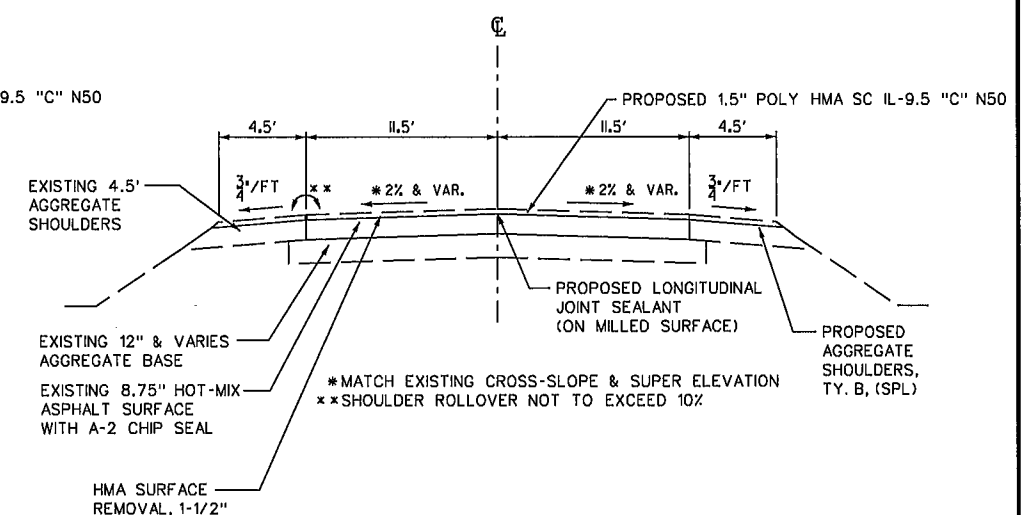
**PROPOSED TYPICAL SECTION  
SANTA FE TRAIL (C.H. 25)**

STA 10+12 TO STA 19+91  
STA 20+64 TO STA 36+00



**PROPOSED TYPICAL SECTION  
SANTA FE TRAIL (C.H. 25)**

STA 53+00 TO STA 68+69  
STA 77+74 TO STA 104+00  
STA 107+77 TO STA 148+90  
STA 155+85 TO STA 237+00



**PROPOSED TYPICAL SECTION  
SANTA FE TRAIL (C.H. 25)**

STA 36+00 TO STA 53+00  
STA 68+69 TO STA 77+74  
STA 104+00 TO STA 107+77  
STA 148+90 TO STA 155+85

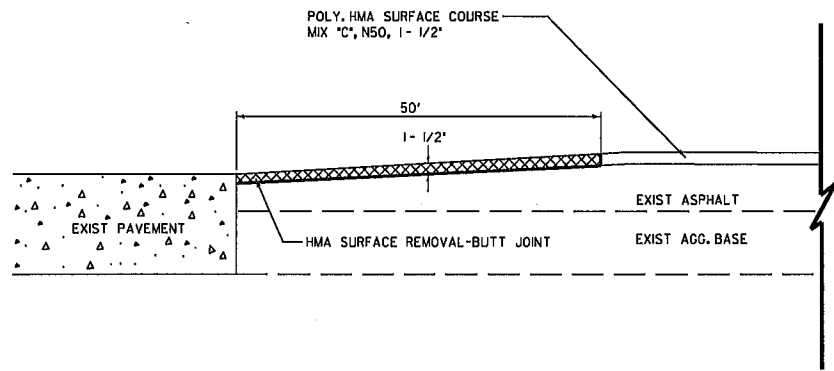
LOCATION: CH 25 - SANTA FE TRAIL	
MIXTURE USES:	SURFACE & INCIDENTAL SURFACE
PG:	SBS 70-28
DESIGN AIR VOIDS:	4% @ N = 50
MIXTURE COMPOSITION: (GRADATION MIXTURE)	IL-9.5
FRICTION AGGREGATE:	MIXTURE C
MIXTURE WEIGHT:	112 LB/SY/IN
QUALITY MANAGEMENT PROGRAM:	QC/QA
SUBLOT SIZE:	N/A
MATERIAL TRANSFER DEVICE (REQUIRED?):	YES

**WOODFORD COUNTY  
HIGHWAY DEPARTMENT**  
CONRAD MOORE, P.E., COUNTY ENGINEER  
301 S. Main St.  
Rooke, IL 61561  
TEL: 309-923-2891  
FAX: 309-467-7220

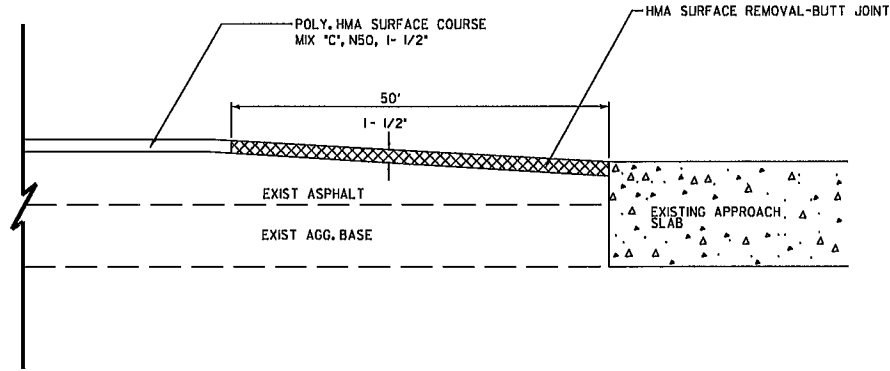
F.A.S. RTE. 2360  
SECTION 21-00058-00-RS  
SANTA FE TRAIL (C.H. 25)  
**PROPOSED  
TYPICAL SECTION**  
SCALE: NONE  
DATE: 10/13/22  
DRAWN BY: CSM  
CHECKED BY: RLK

PLOT DATE - 10/13/2022  
 FILE NAME - V:\County\21-00058-00-RS (SF Trail)\dgn\03 PROP TYP CROSS SECTIONS.dgn  
 PLOT SCALE - 10.9091 / 1 in.  
 USER NAME - MooreC

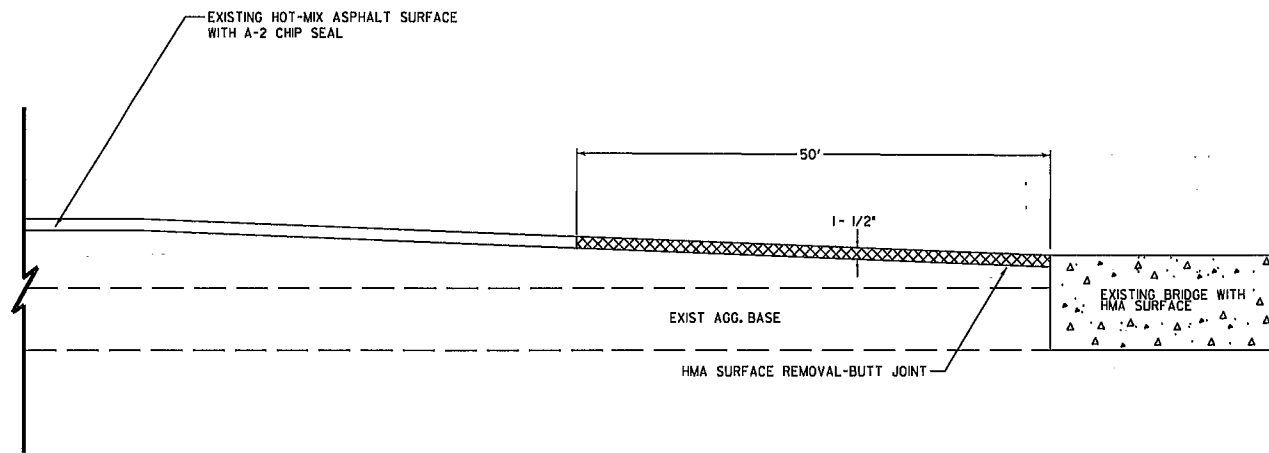
F.A.S. RTE.	SECTION	COUNTY	TOTAL SHEETS	SHEET NO.
2360	21-00058-00-RS	WOODFORD	9	4
STA.	TO STA.			
FED. ROAD DIST. NO. 4	ILLINOIS	FED. AID PROJECT		



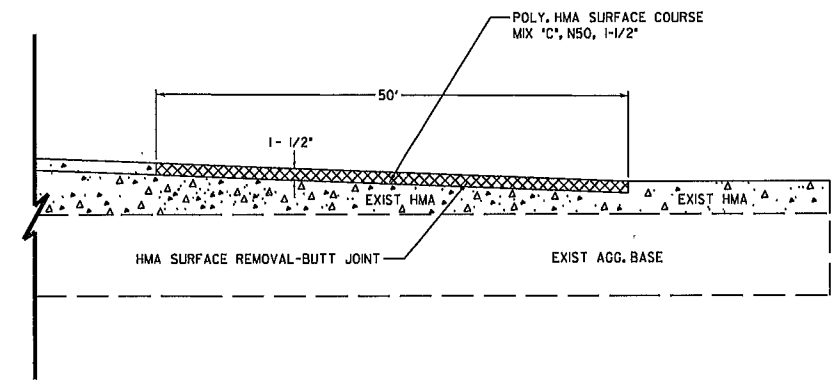
**SECTION A-A**  
TYPICAL BUTT-JOINT DETAIL  
STATION 10+12



**SECTION B-B**  
TYPICAL BUTT-JOINT DETAIL  
BRIDGE APPROACH  
STA. 19+91  
STA. 20+64

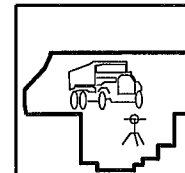


**SECTION D-D**  
TYPICAL TRANSITION DETAIL  
BRIDGE APPROACH  
STA. 161+66  
STA. 162+28



**SECTION F-F**  
TYPICAL BUTT JOINT DETAIL  
STA. 237+00  
END OF IMPROVEMENT

PLOT DATE - 10/13/2022  
 FILE NAME - V:\County\21-00058-00-RS (SF Trail)\dgn\04 thru 05-butt joint detail.dgn  
 PLOT SCALE - 52.2247' / in.  
 USER NAME - MooreC



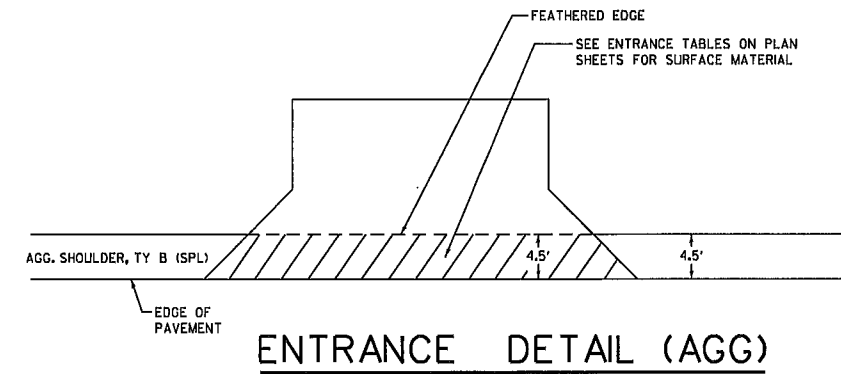
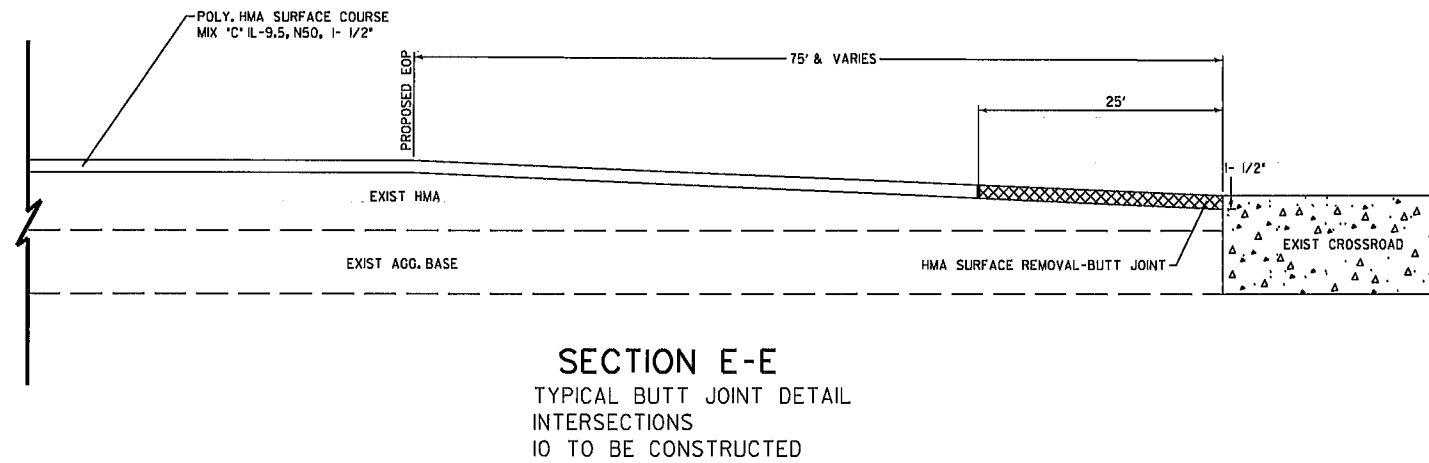
**WOODFORD COUNTY  
HIGHWAY DEPARTMENT**  
 CONRAD MOORE, P.E., COUNTY ENGINEER  
 301 S. Main St.  
 Roanoke, IL 61561  
 TEL: 309-923-2891  
 FAX: 309-467-7220

F.A.S. RTE. 2360  
 SECTION 21-00058-00-RS  
 SANTA FE TRAIL (C.H.25)  
**BUTT JOINT  
 DETAIL**

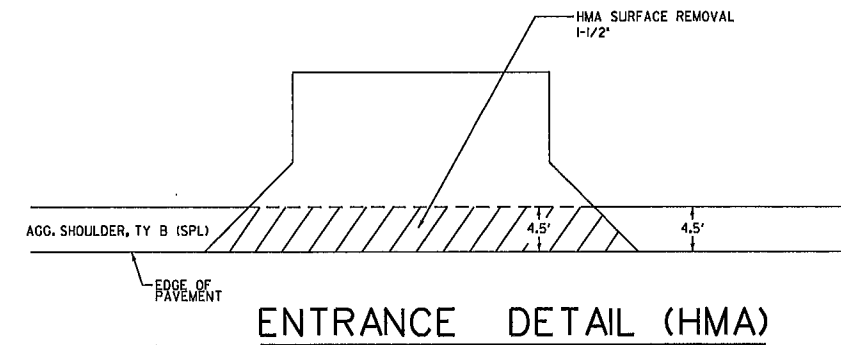
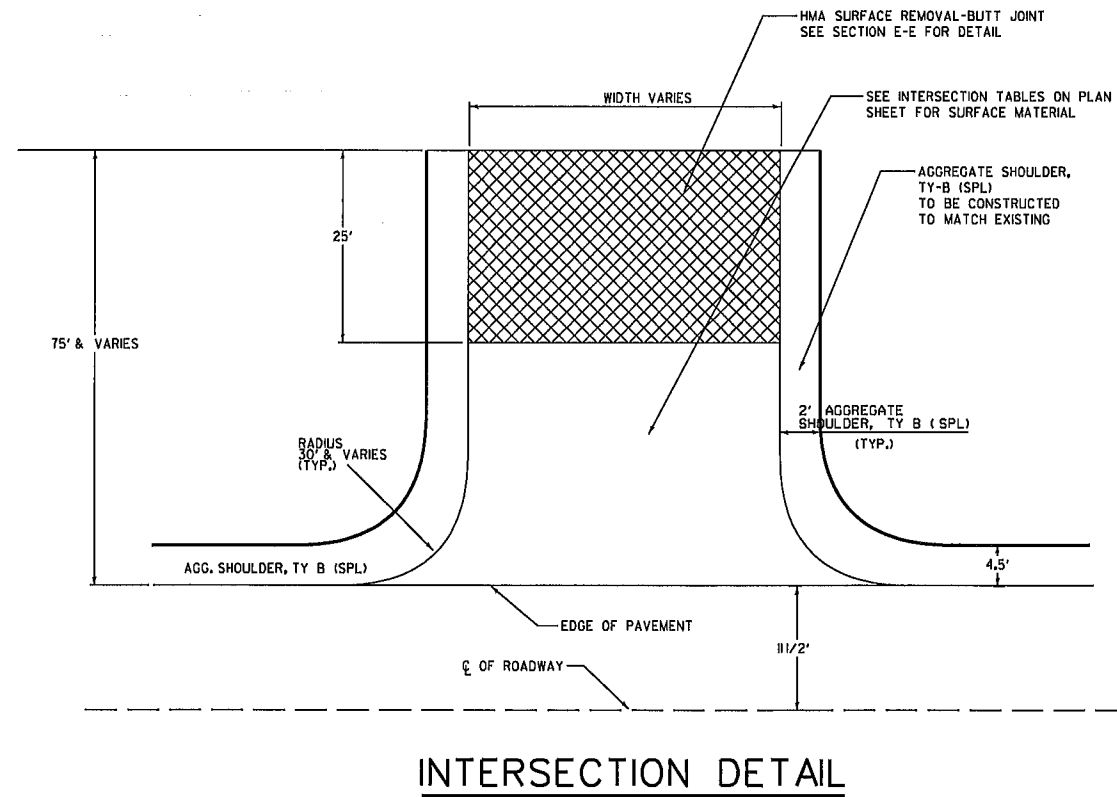
SCALE: NONE  
 DATE: 10/13/22

DRAWN BY: CSM  
 CHECKED BY: RLK

F.A.S. RTE.	SECTION	COUNTY	TOTAL SHEETS	SHEET NO.
2360	21-00058-00-RS	WOODFORD	9	5
STA.	TO STA.			
		FED. ROAD DIST. NO. 4	ILLINOIS	FED. AID PROJECT



NOTE: EXTENTS OF PROPOSED AGGREGATE SURFACE @ AGGREGATE ENTRANCES MAY BE ADJUSTED BY ENGINEER IN THE FIELD.



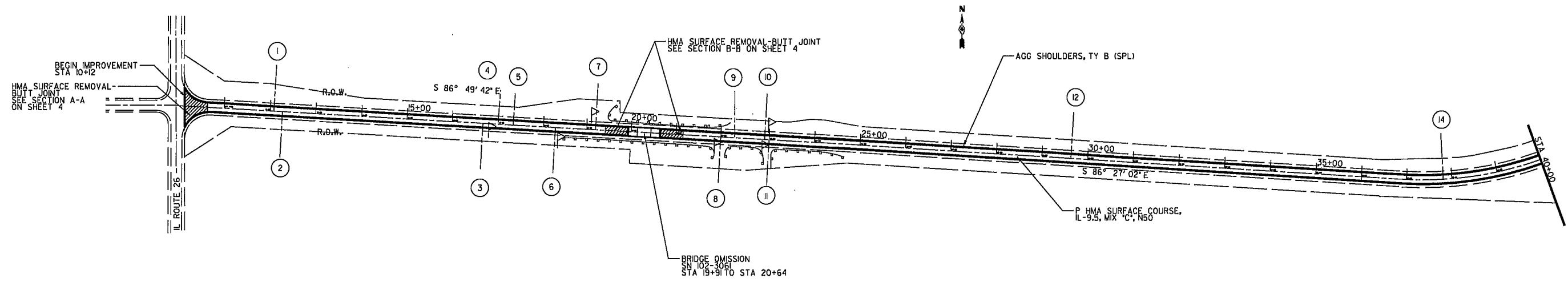
NOTE: EXTENTS OF HMA SURFACE REMOVAL @ HMA ENTRANCES MAY BE ADJUSTED BY ENGINEER IN FIELD.

PLOT DATE - 10/13/2022  
FILE NAME - V:\County\21-00058-00-RS (SF Trail)\dgn\04 thru 05-butt joint detail.dgn  
PLOT SCALE - 52.2247 1/ in.  
USER NAME - MooreC

**WOODFORD COUNTY  
HIGHWAY DEPARTMENT**  
CONRAD MOORE, P.E., COUNTY ENGINEER  
301 S. Main St.  
Roaokoe, IL 61561  
TEL: 309-923-2891  
FAX: 309-467-7220

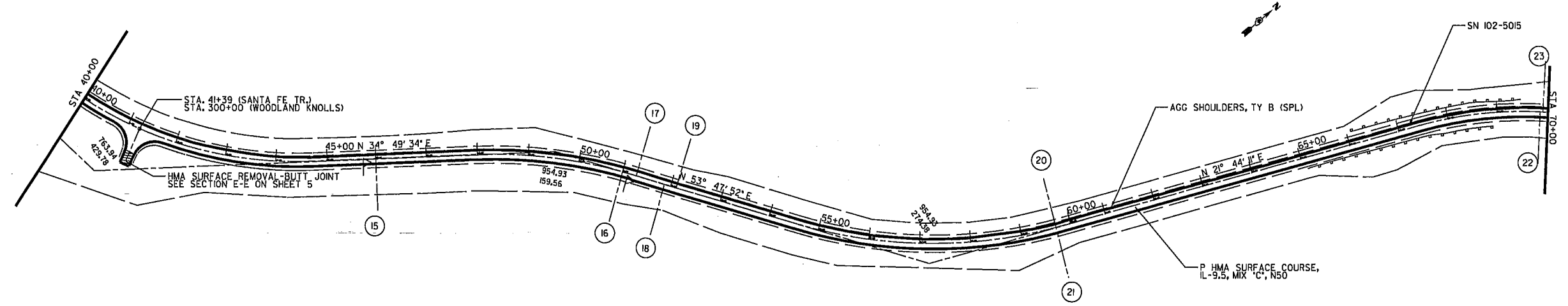
F.A.S. RTE. 2360  
SECTION 21-00058-00-RS  
SANTA FE TRAIL (C.H.25)  
**MISC. DETAIL**  
SCALE: NONE  
DATE: 10/13/22  
DRAWN BY: CSM  
CHECKED BY: RLK

F.A.S. RTE.	SECTION	COUNTY	TOTAL SHEETS	SHEET NO.
2360	21-00058-00-RS	WOODFORD	9	6
STA. 10+12 TO STA. 70+00		FED. ROAD DIST. NO. 4 ILLINOIS FED. AID PROJECT		



**LEGEND**

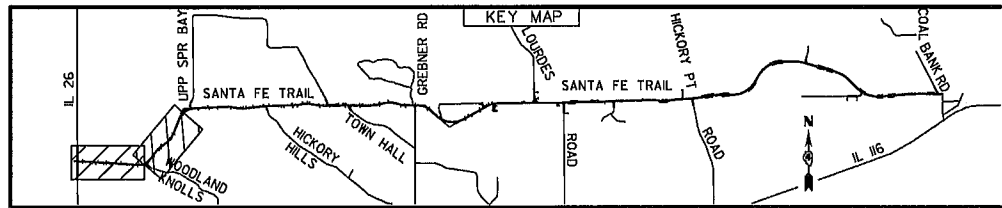
- ENTRANCE LOCATION (SEE TABLE)
- ⤴ MAIL BOX TURNOUT (TYP.)



ENTRANCE#	TYPE	STATION	WIDTH (FT)	SURFACE
1	COMMERCIAL ENTRANCE	12+08 LT	19	CONC
2	COMMERCIAL ENTRANCE	12+26 RT	30	ASPH
3	PRIVATE ENTRANCE	16+66 RT	28	AGG
4	FIELD ENTRANCE	17+00 LT	21	AGG
5	PRIVATE ENTRANCE	17+32 LT	10	AGG
6	PRIVATE ENTRANCE	18+25 RT	16	AGG
7	PRIVATE ENTRANCE	19+19 LT	13	AGG
8	PRIVATE ENTRANCE	22+00 RT	14	AGG
9	FIELD ENTRANCE	22+30 LT	17	AGG
10	PRIVATE ENTRANCE	22+97 LT	15	AGG

ENTRANCE#	TYPE	STATION	WIDTH (FT)	SURFACE
11	PRIVATE ENTRANCE	23+00 RT	9	AGG
12	FIELD ENTRANCE	29+63 LT	25	AGG
13	FIELD ENTRANCE	37+20 RT	16	AGG
14	FIELD ENTRANCE	37+80 LT	20	AGG
15	PRIVATE ENTRANCE	46+00 RT	14	ASPH
16	PRIVATE ENTRANCE	51+00 RT	40	ASPH
17	OMITTED			
18	FIELD ENTRANCE	51+86 RT	33	AGG
19	COMMERCIAL ENTRANCE	52+11 LT	30	AGG
20	FIELD ENTRANCE	59+70 LT	21	AGG

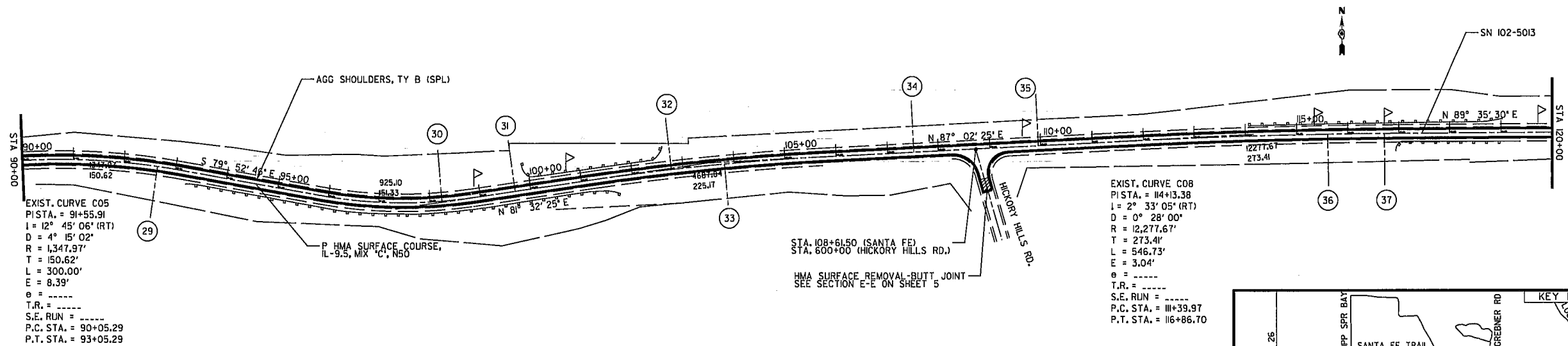
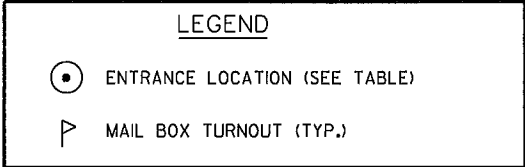
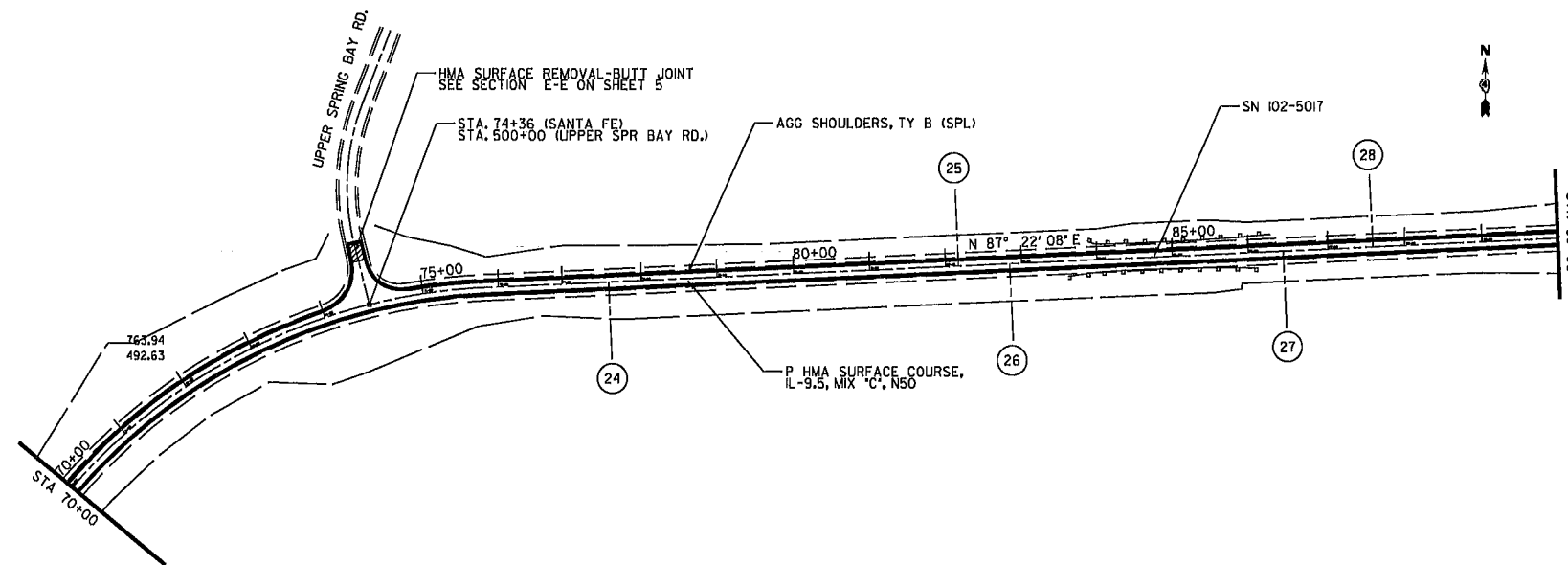
ENTRANCE#	TYPE	STATION	WIDTH (FT)	SURFACE
21	FIELD ENTRANCE	59+70 RT	22	AGG
22	FIELD ENTRANCE	69+85 RT	13	AGG
23	FIELD ENTRANCE	69+90 LT	21	AGG



**WOODFORD COUNTY HIGHWAY DEPARTMENT**  
 CONRAD MOORE, P.E., COUNTY ENGINEER  
 301 S. Main St.  
 Roonoka, IL 61561  
 TEL: 309-923-2891  
 FAX: 309-467-7220

F.A.S. RTE. 2360  
 SECTION 21-00058-00-RS  
 SANTA FE TRAIL (C.H.25)  
**PLAN SHEET**  
 SCALE: AS SHOWN  
 DATE: 10/13/22  
 DRAWN BY:CSM  
 CHECKED BY:RLK

PLOT DATE: 10/13/2022  
 FILE NAME: V:\County\21-00058-00-RS (SF Tr)06 thru 09-base.dgn  
 PLOT SCALE: 239.2254' / in.  
 USER NAME: MooreC

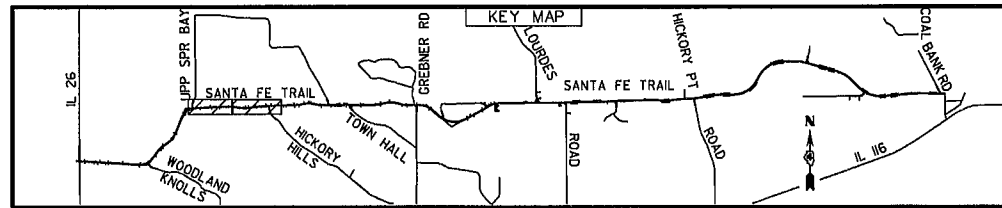


EXIST. CURVE C05  
 P.I. STA. = 91+55.91  
 I = 12° 45' 06" (RT)  
 D = 4° 15' 02"  
 R = 1,347.97'  
 T = 150.62'  
 L = 300.00'  
 E = 8.39'  
 θ = -----  
 T.R. = -----  
 S.E. RUN = -----  
 P.C. STA. = 90+05.29  
 P.T. STA. = 93+05.29

EXIST. CURVE C08  
 P.I. STA. = 114+13.38  
 I = 2° 33' 05" (RT)  
 D = 0° 28' 00"  
 R = 12,277.67'  
 T = 273.41'  
 L = 546.73'  
 E = 3.04'  
 θ = -----  
 T.R. = -----  
 S.E. RUN = -----  
 P.C. STA. = 111+39.97  
 P.T. STA. = 116+86.70

ENTRANCE#	TYPE	STATION	WIDTH (FT)	SURFACE
24	FIELD ENTRANCE	77+61 RT	18	AGG
25	FIELD ENTRANCE	82+17 LT	16	AGG
26	PRIVATE ENTRANCE	82+84 RT	17	ASPH
27	FIELD ENTRANCE	86+47 RT	17	AGG
28	FIELD ENTRANCE	87+59 LT	17	AGG
29	PRIVATE ENTRANCE	92+66 RT	20	ASPH
30	PRIVATE ENTRANCE	98+23 LT	22	ASPH
31	PRIVATE ENTRANCE	99+70 LT	31	ASPH
32	PRIVATE ENTRANCE	102+77 LT	20	AGG
33	FIELD ENTRANCE	103+81 RT	24	AGG
34	FIELD ENTRANCE	107+52 LT	12	AGG

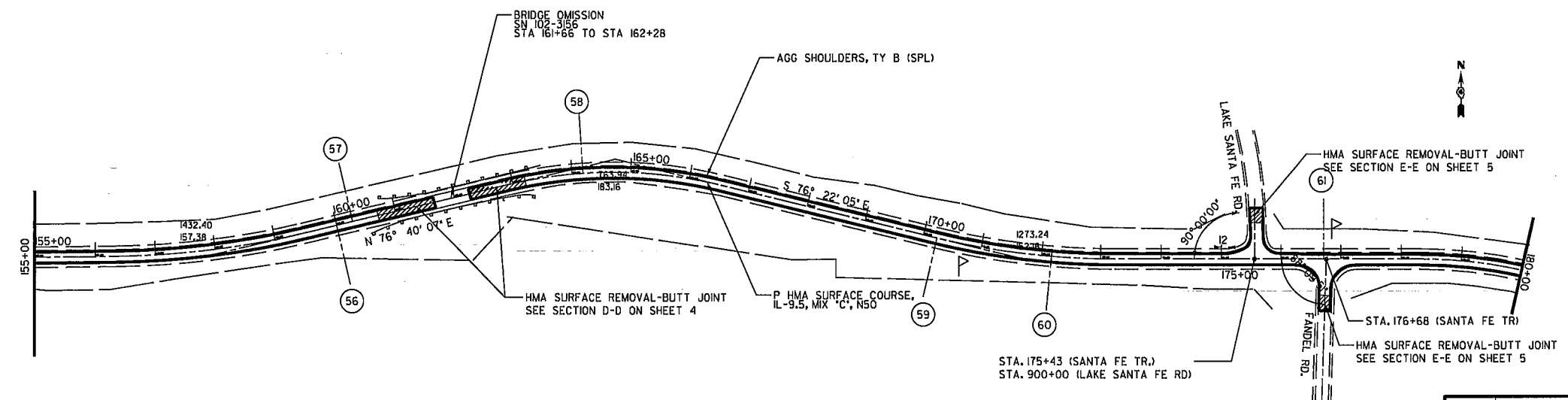
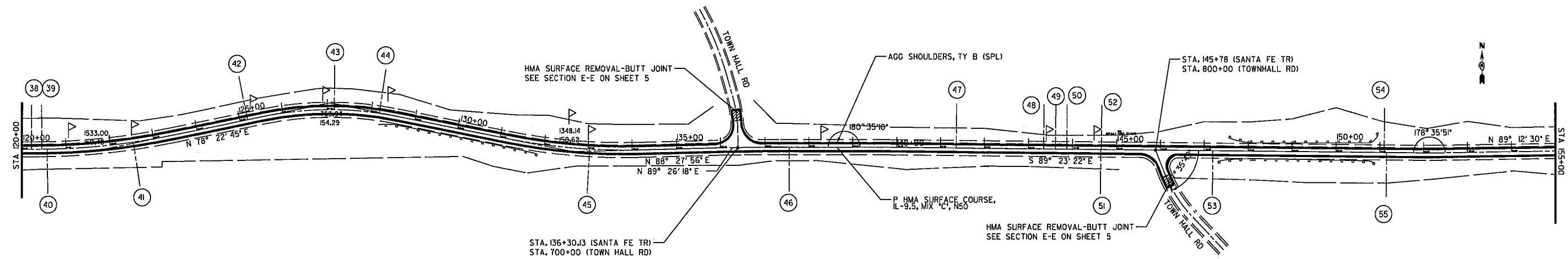
ENTRANCE#	TYPE	STATION	WIDTH (FT)	SURFACE
35	PRIVATE ENTRANCE	109+95 LT	12	AGG
36	PRIVATE ENTRANCE	115+61 RT	18	ASPH
37	PRIVATE ENTRANCE	116+7 RT	18	ASPH



**WOODFORD COUNTY HIGHWAY DEPARTMENT**  
 CONRAD MOORE, P.E., COUNTY ENGINEER  
 301 S. Main St.  
 Roanoke, IL 61561  
 TEL: 309-923-2891  
 FAX: 309-467-7220

F.A.S. RTE. 2360  
 SECTION 21-00058-00-RS  
 SANTA FE TRAIL (C.H.25)  
**PLAN SHEET**  
 SCALE: AS SHOWN  
 DATE: 10/13/22  
 DRAWN BY: CSM  
 CHECKED BY: RLK

PLOT DATE: 10/13/2022  
 FILE NAME: V:\County\21-00058-00-RS (SF Trail)\dgn\06 thru 09-base.dgn  
 PLOT SCALE: 239.2254' / in.  
 USER NAME: MooreC



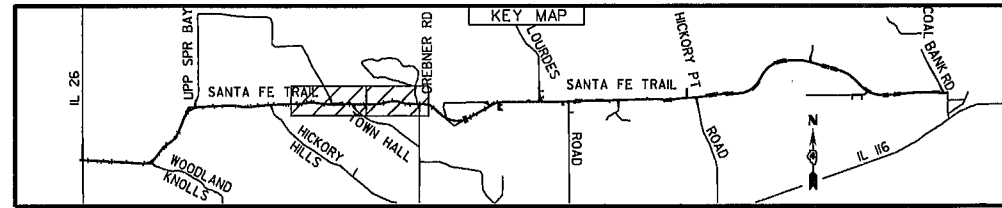
**LEGEND**

- ENTRANCE LOCATION (SEE TABLE)
- ▽ MAIL BOX TURNOUT (TYP.)

ENTRANCE#	TYPE	STATION	WIDTH (FT)	SURFACE
38	PRIVATE ENTRANCE	120+21 LT	21	ASPH
39	PRIVATE ENTRANCE	120+45 LT	21	ASPH
40	PRIVATE ENTRANCE	120+58 RT	16	ASPH
41	PRIVATE ENTRANCE	122+53 RT	40	ASPH
42	PRIVATE ENTRANCE	125+18 LT	12	ASPH
43	PRIVATE ENTRANCE	127+15 LT	14	ASPH
44	PRIVATE ENTRANCE	128+18 LT	13	ASPH
45	PRIVATE ENTRANCE	133+04 RT	26	ASPH
46	PRIVATE ENTRANCE	137+55 RT	30	ASPH
47	PRIVATE ENTRANCE	141+36 LT	14	ASPH
48	PRIVATE ENTRANCE	143+35 LT	12	ASPH

ENTRANCE#	TYPE	STATION	WIDTH (FT)	SURFACE
49	PRIVATE ENTRANCE	143+63 LT	11	ASPH
50	PRIVATE ENTRANCE	143+88 LT	13	ASPH
51	PRIVATE ENTRANCE	144+64 RT	13	CONC.
52	PRIVATE ENTRANCE	144+66 LT	23	AGG
53	FIELD ENTRANCE	147+20 RT	17	AGG
54	FIELD ENTRANCE	151+10 LT	18	AGG
55	FIELD ENTRANCE	151+16 RT	22	AGG
56	FIELD ENTRANCE	160+00 RT	16	AGG
57	FIELD ENTRANCE	160+28 LT	12	AGG
58	PRIVATE ENTRANCE	164+18 LT	15	AGG
59	PRIVATE ENTRANCE	170+23 RT	30	ASPH

ENTRANCE#	TYPE	STATION	WIDTH (FT)	SURFACE
60	OMITTED			
61	PRIVATE ENTRANCE	176+72 LT	15	ASPH



**WOODFORD COUNTY HIGHWAY DEPARTMENT**  
 CONRAD MOORE, P.E., COUNTY ENGINEER  
 301 S. Main St.  
 Roanoke, IL 61561  
 TEL: 309-923-2891  
 FAX: 309-467-7220

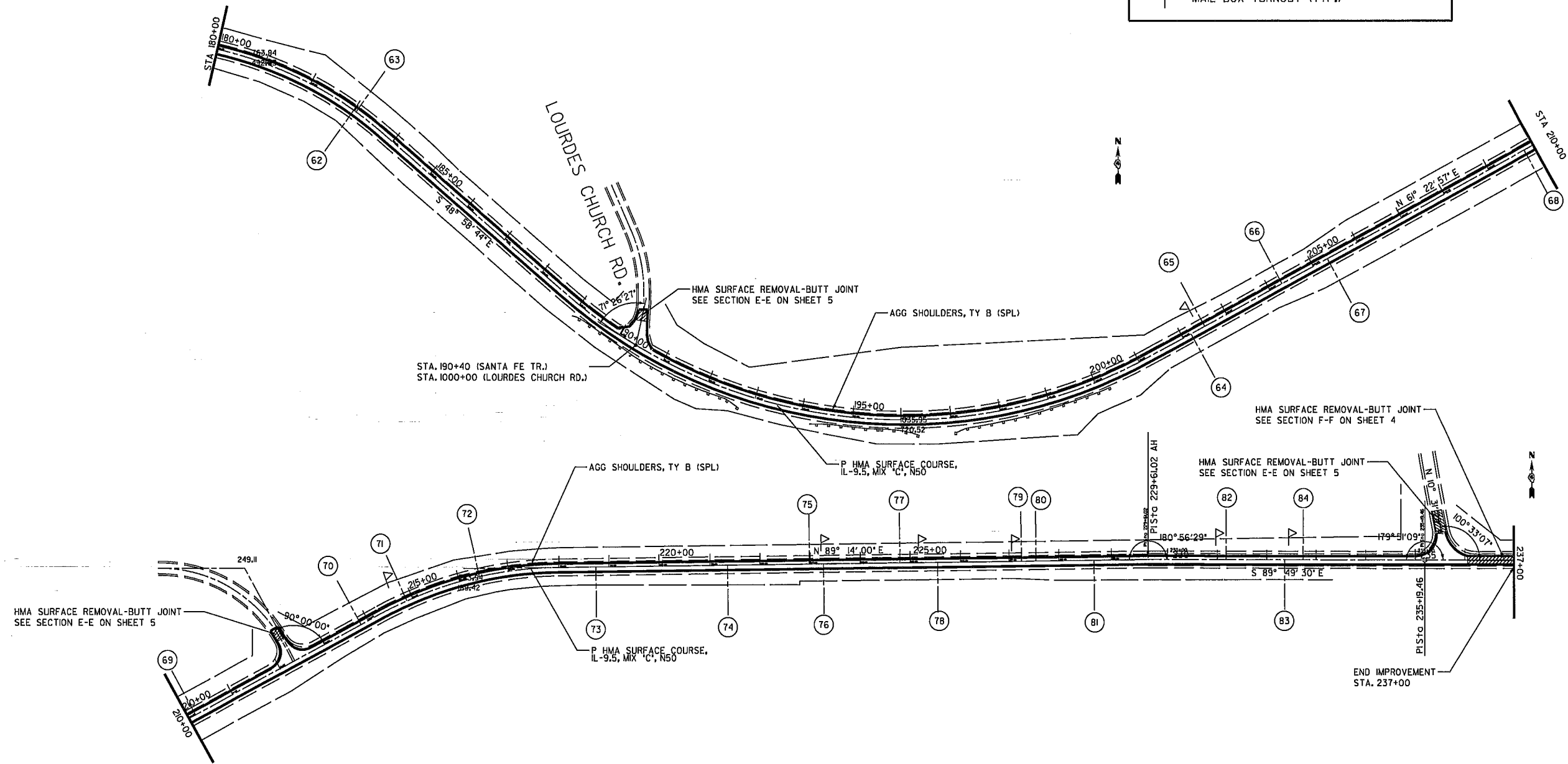
F.A.S. RTE. 2360  
 SECTION 21-00058-00-RS  
 SANTA FE TRAIL (C.H.25)  
**PLAN SHEET**  
 SCALE: AS SHOWN  
 DATE: 10/13/22  
 DRAWN BY: CSM  
 CHECKED BY: RLK

PLOT DATE: 10/13/2022  
 FILE NAME: W:\VCOUNTY\21-00058-00-RS (SF Trail)\dgn\08 thru 09-base.dgn.dgn  
 PLOT SCALE: 1"=239.2254' / in.  
 USER NAME: Moorecc



**LEGEND**

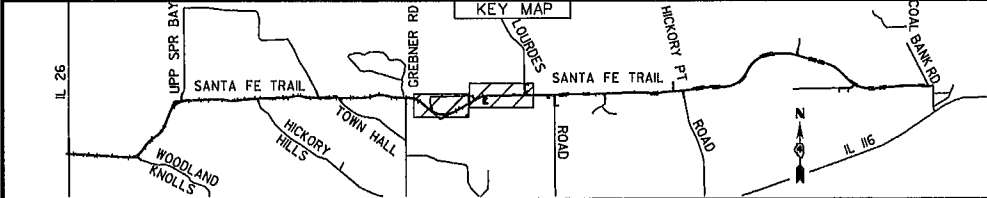
- ENTRANCE LOCATION (SEE TABLE)
- ⚡ MAIL BOX TURNOUT (TYP.)



ENTRANCE#	TYPE	STATION	WIDTH (FT)	SURFACE
62	FIELD ENTRANCE	183+00 RT	14	AGG
63	FIELD ENTRANCE	183+07 LT	14	AGG
64	FIELD ENTRANCE	202+18 RT	17	AGG
65	FIELD ENTRANCE	202+49 LT	15	AGG
66	FIELD ENTRANCE	204+28 LT	16	AGG
67	FIELD ENTRANCE	205+32 RT	15	AGG
68	FIELD ENTRANCE	209+83 RT	16	AGG
69	PRIVATE ENTRANCE	210+15 LT	15	AGG
70	PRIVATE ENTRANCE	213+84 LT	14	AGG
71	PRIVATE ENTRANCE	214+87 LT	20	ASPH
72	FIELD ENTRANCE	216+41 LT	18	ASPH

ENTRANCE#	TYPE	STATION	WIDTH (FT)	SURFACE
73	FIELD ENTRANCE	218+75 RT	19	AGG
74	FIELD ENTRANCE	221+35 RT	17	AGG
75	FIELD ENTRANCE	222+98 LT	13	AGG
76	PRIVATE ENTRANCE	223+27 RT	26	ASPH
77	PRIVATE ENTRANCE	224+80 LT	48	AGG
78	PRIVATE ENTRANCE	225+51 RT	50	ASPH
79	PRIVATE ENTRANCE	227+26 LT	23	AGG
80	PRIVATE ENTRANCE	227+55 LT	23	AGG
81	FIELD ENTRANCE	228+70 RT	16	AGG
82	FIELD ENTRANCE	231+17 LT	37	AGG
83	PRIVATE ENTRANCE	232+37 RT	25	ASPH

ENTRANCE#	TYPE	STATION	WIDTH (FT)	SURFACE
84	FIELD ENTRANCE	232+74 LT	22	AGG



**WOODFORD COUNTY HIGHWAY DEPARTMENT**  
 CONRAD MOORE, P.E., COUNTY ENGINEER  
 301 S. Main St.  
 Roanoke, IL 61561  
 TEL: 309-923-2891  
 FAX: 309-467-7220

F.A.S. RTE. 2360  
 SECTION 21-00058-00-RS  
 SANTA FE TRAIL (C.H.25)  
**PLAN SHEET**  
 SCALE: AS SHOWN  
 DATE: 10/13/22  
 DRAWN BY: CSM  
 CHECKED BY: RLK

PLOT DATE: 10/13/2022  
 FILE NAME: V:\Projects\21-00058-00-RS (SF Trail)\dgn\06 thru 09-base.dgn  
 PLOT SCALE: 239.2254' / in.  
 USER NAME: MooreC