

STATE OF ILLINOIS  
DEPARTMENT OF TRANSPORTATION

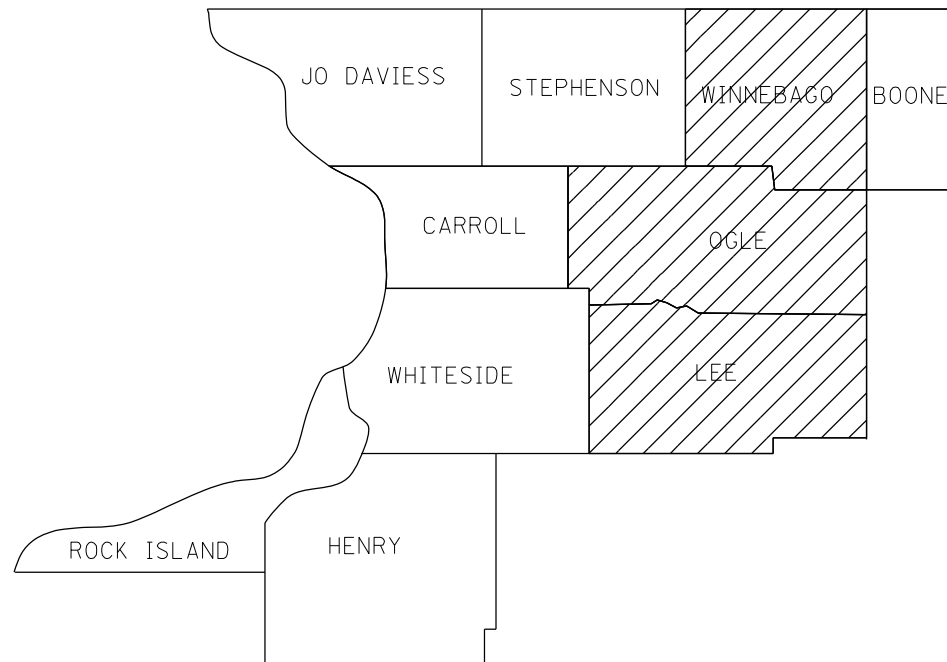
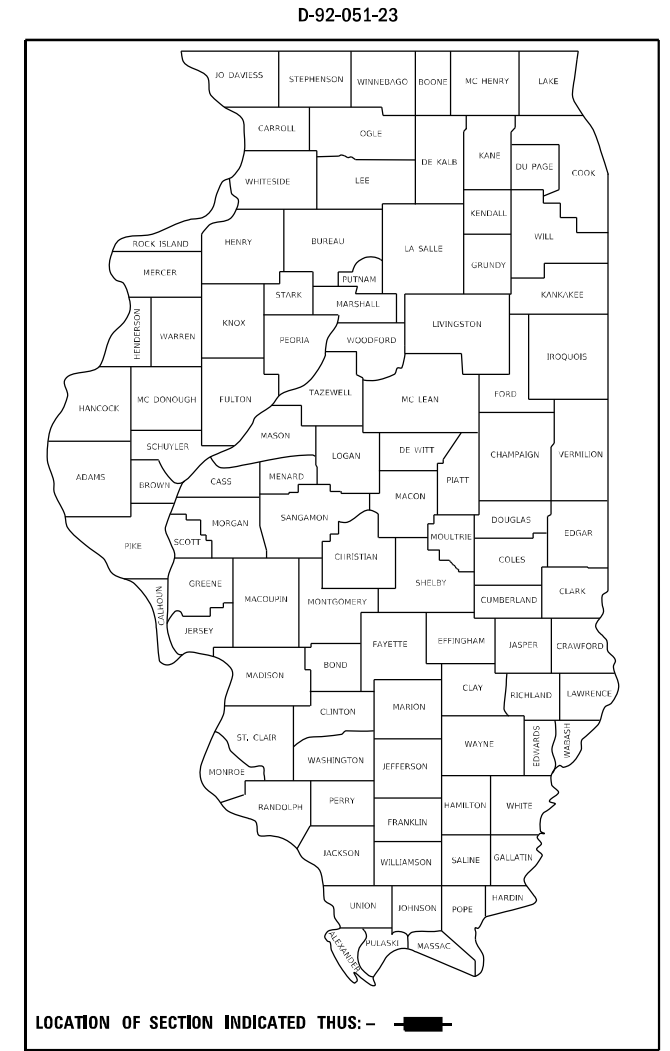
|           |                |          |                    |           |
|-----------|----------------|----------|--------------------|-----------|
| F.A. RTE. | SECTION        | COUNTY   | TOTAL SHEETS       | SHEET NO. |
| VAR.      | D2 BDS 2023-03 | VARIOUS  | 17                 | 1         |
|           |                | ILLINOIS | CONTRACT NO. 64S19 |           |

FOR INDEX OF SHEETS, SEE SHEET NO. 2  
FOR STATE STANDARDS, SEE SHEET NO. 2

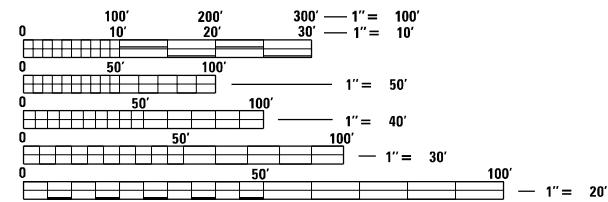
**PROPOSED  
HIGHWAY PLANS**

VARIOUS ROUTES  
PROJECT: HBFP-7YL3(176)  
SECTION D2 BDS 2023-03  
TYPE of IMPROVEMENT: BRIDEG DECK SEALING  
VARIOUS COUNTIES

C-92-014-23



DISTRICT 2



FULL SIZE PLANS HAVE BEEN PREPARED USING STANDARD ENGINEERING SCALES, REDUCED SIZED PLANS WILL NOT CONFORM TO STANDARD SCALES. IN MAKING MEASUREMENTS ON REDUCED PLANS, THE ABOVE SCALES MAY BE USED.

J.U.L.I.E.  
JOINT UTILITY LOCATION INFORMATION FOR EXCAVATION  
1-800-892-0123  
OR 811

PROJECT ENGINEER: DAVID DOSS (815) 284-5416  
PROJECT MANAGER: MAHMOUD ETEMADI (815) 284-5393

CONTRACT NO. 64S19

STATE OF ILLINOIS  
DEPARTMENT OF TRANSPORTATION

SUBMITTED October 11, 2022

*[Signature]*  
REGIONAL ENGINEER

December 9, 2022  
*[Signature]*  
ENGINEER OF DESIGN AND ENVIRONMENT

December 9, 2022  
*[Signature]*  
DIRECTOR OF HIGHWAYS PROJECT IMPLEMENTATION

PRINTED BY THE AUTHORITY  
OF THE STATE OF ILLINOIS

# INDEX OF SHEETS

- 1 COVER SHEET
- 2 INDEX OF SHEETS, STATE STANDARDS & GENERAL NOTES
- 3 SUMMARY OF QUANTITIES
- 4 SCHEDULE OF QUANTITIES
- 5 SEALING DETAIL
- 6 LOCATION MAP LEE COUNTY
- 7 LOCATION MAP OGLE COUNTY
- 8 LOCATION MAP WINNEBAGO COUNTY
- 9-12 WORK ZONE SIGN DETAILS (DISTRICT STANDARD 34.1)
- 13-16 TRAFFIC CONTROL FOR TRANSITION AREAS (DISTRICT STANDARD 38.1)
- 17 TRAFFIC CONTROL AND PROTECTION AT TURN BAYS (TO REMAIN OPEN TO TRAFFIC) (DISTRICT STANDARD 94.2)

# GENERAL NOTES

THE CONCRETE SEALER SHALL BE APPLIED TO THE ENTIRE TOP SURFACE OF THE DECK, INCLUDING THE INSIDE FACES AND TOPS OF PARAPETS.

WATER BASED CONCRETE SEALERS WILL NOT BE ALLOWED.

WORK ON THIS PROJECT MAY POTENTIALLY CONFLICT WITH WORK ON OTHER CONTRACTS IN THE AREA. THE CONTRACTOR SHOULD BE PREPARED TO PLAN FOR POTENTIAL DELAYS AND COOPERATE WITH CONTRACTORS ON THE OTHER PROJECTS.

NO WORK SHALL BE PERFORMED ON THIS CONTRACT AFTER NOVEMBER 15 OR PRIOR TO APRIL 15.

**NO** STREAM PERMITS HAVE BEEN PROCURED FOR THIS PROJECT. NONE ARE REQUIRED FROM THE REGULATORY AGENCIES AS LONG AS THERE IS NO DEBRIS FALLING OR BEING PLACED INTO THE STREAM. ANY TEMPORARY FILL IN THE STREAM OR THE COMPROMISING OF THE DIKE (IF APPLICABLE) WILL NOT BE ALLOWED. IF THE CONTRACTOR CHOOSES TO USE ALTERNATE/MODIFIED CONSTRUCTION METHOD(S) FROM THE AFOREMENTIONED, THEY WILL BE RESPONSIBLE FOR OBTAINING THE PROPER PERMITS. NO RELIEF OR COMPENSATION WILL BE GIVEN FOR ANY DELAYS, WORKING DAYS CHARGED, OR CALENDAR DAYS EXPIRED AS A RESULT OF THE LOSS TIME OR DELAY DURING THE RE-SUBMITTAL PROCESS TO PROCURE THE NECESSARY PERMIT(S) DUE TO THE CONTRACTOR CHOOSING ALTERNATE/MODIFIED CONSTRUCTION METHOD(S). ABSOLUTELY NO CONSTRUCTION ACTIVITIES WILL TAKE PLACE WITHOUT THE PROPER PERMITS BEING SECURED.

# STATE STANDARDS

- 701006-05 OFF-RD OPERATIONS, 2L, 2W, 15'(4.5m) TO 24"(600mm) FROM PAVEMENT EDGE
- 701101-05 OFF-RD OPERATIONS, MULTILANE, 15'(4.5m) TO 24"(600mm) FROM PAVEMENT EDGE
- 701201-05 LANE CLOSURE, 2L, 2W, DAY ONLY, FOR SPEEDS ≥ 45 MPH
- 701400-11 APPROACH TO LANE CLOSURE, FREEWAY/EXPRESSWAY
- 701406-13 LANE CLOSURE, FREEWAY/EXPRESSWAY, DAY OPERATIONS ONLY
- 701426-09 LANE CLOSURE, MULTILANE, INTERMITTENT OR MOVING OPER., FOR SPEEDS ≥ 45 MPH
- 701901-08 TRAFFIC CONTROL DEVICES

MODEL: Default  
 FILE: Mainfile.pxl  
 Plotter: pwlplotter  
 Bentley.com: P:\WIDOT\Documents\DOT Offices\District 2\Projects\Operations\Bridge Section\Bridge Deck Sealing Contracts\2023\64519\CADD\64519-sh-cv-cover.dgn

|                           | USER NAME = David.Doss<br>DESIGNED - _____<br>DRAWN - _____<br>PLOT SCALE = 100.0000' / in.<br>CHECKED - _____<br>PLOT DATE = Aug-30-2022 02:34:49 PM<br>DATE - _____ | REVISED - _____<br>REVISED - _____<br>REVISED - _____<br>REVISED - _____ | <b>STATE OF ILLINOIS<br/>DEPARTMENT OF TRANSPORTATION</b> | <b>INDEX OF SHEETS<br/>STATE STANDARDS &amp; GENERAL NOTES</b> | SCALE: _____<br>SHEET ____ OF ____ SHEETS<br>STA. _____ TO STA. _____ | <table border="1" style="width: 100%; border-collapse: collapse;"> <tr> <th style="font-size: small;">F.A. RTE.</th> <th style="font-size: small;">SECTION</th> <th style="font-size: small;">COUNTY</th> <th style="font-size: small;">TOTAL SHEETS</th> <th style="font-size: small;">SHEET NO.</th> </tr> <tr> <td style="font-size: x-small;">VAR.</td> <td style="font-size: x-small;">D2 BDS 2023-03</td> <td style="font-size: x-small;">VARIOUS</td> <td style="font-size: x-small;">17</td> <td style="font-size: x-small;">2</td> </tr> <tr> <td colspan="5" style="text-align: right; font-size: x-small;">CONTRACT NO. 64519</td> </tr> </table> | F.A. RTE. | SECTION | COUNTY | TOTAL SHEETS | SHEET NO. | VAR. | D2 BDS 2023-03 | VARIOUS | 17 | 2 | CONTRACT NO. 64519 |  |  |  |  |
|---------------------------|---|--|---|--|---|--|-----------|---------|--------|--------------|-----------|------|----------------|---------|----|---|--------------------|--|--|--|--|
| F.A. RTE.                 | SECTION   | COUNTY   | TOTAL SHEETS  | SHEET NO.  |   |  |           |         |        |              |           |      |                |         |    |   |                    |  |  |  |  |
| VAR.                      | D2 BDS 2023-03  | VARIOUS  | 17  | 2  |   |  |           |         |        |              |           |      |                |         |    |   |                    |  |  |  |  |
| CONTRACT NO. 64519        |   |  |   |  |   |  |           |         |        |              |           |      |                |         |    |   |                    |  |  |  |  |
| ILLINOIS FED. AID PROJECT |   |  |   |  |   |  |           |         |        |              |           |      |                |         |    |   |                    |  |  |  |  |

# SUMMARY OF QUANTITIES

| CODE NUMBER | ITEM  | UNIT  | 0047<br>LEE<br>COUNTY<br>80% FEDERAL<br>20% STATE | 0047<br>OGLE<br>COUNTY<br>80% FEDERAL<br>20% STATE | 0047<br>WINNEBAGO<br>COUNTY<br>80% FEDERAL<br>20% STATE | TOTAL<br>QUANTITY<br>80% FEDERAL<br>20% STATE |
|-------------|---|-------|---|--|---|---|
| X5870015    | BRIDGE DECK CONCRETE SEALER                     | SQ FT | 50,006  | 21,543   | 83,698  | 155,247                                       |
| 67100100    | MOBILIZATION                                    | L SUM | 0.50  | 0.25   | 0.25  | 1   |
| 70100450    | TRAFFIC CONTROL AND PROTECTION, STANDARD 701201 | L SUM | 0.60  | 0.40   | 0   | 1   |
| 70100700    | TRAFFIC CONTROL AND PROTECTION, STANDARD 701406 | L SUM | 0.40  | 0  | 0.60  | 1   |
|             |   |       |   |  |   |   |
|             |   |       |   |  |   |   |
|             |   |       |   |  |   |   |
|             |   |       |   |  |   |   |
|             |   |       |   |  |   |   |
|             |   |       |   |  |   |   |
|             |   |       |   |  |   |   |
|             |   |       |   |  |   |   |
|             |   |       |   |  |   |   |
|             |   |       |   |  |   |   |
|             |   |       |   |  |   |   |
|             |   |       |   |  |   |   |

MODEL: C:\p1\...  
 FILE NAME: P:\...

# SCHEDULE OF QUANTITIES

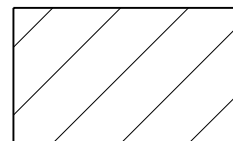
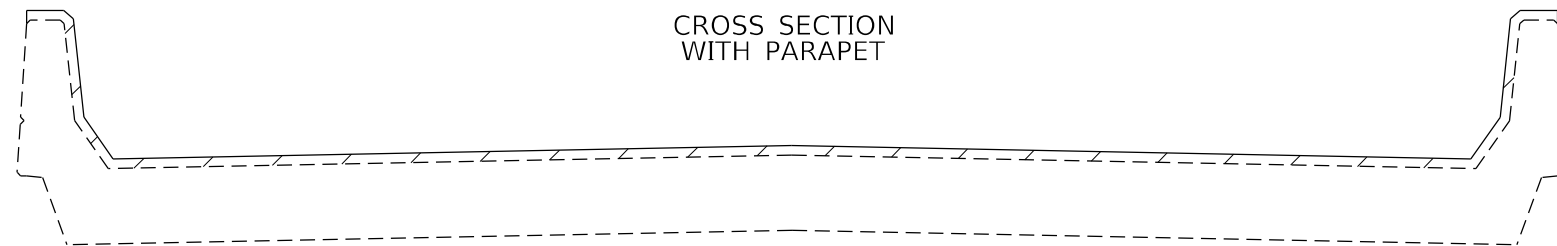
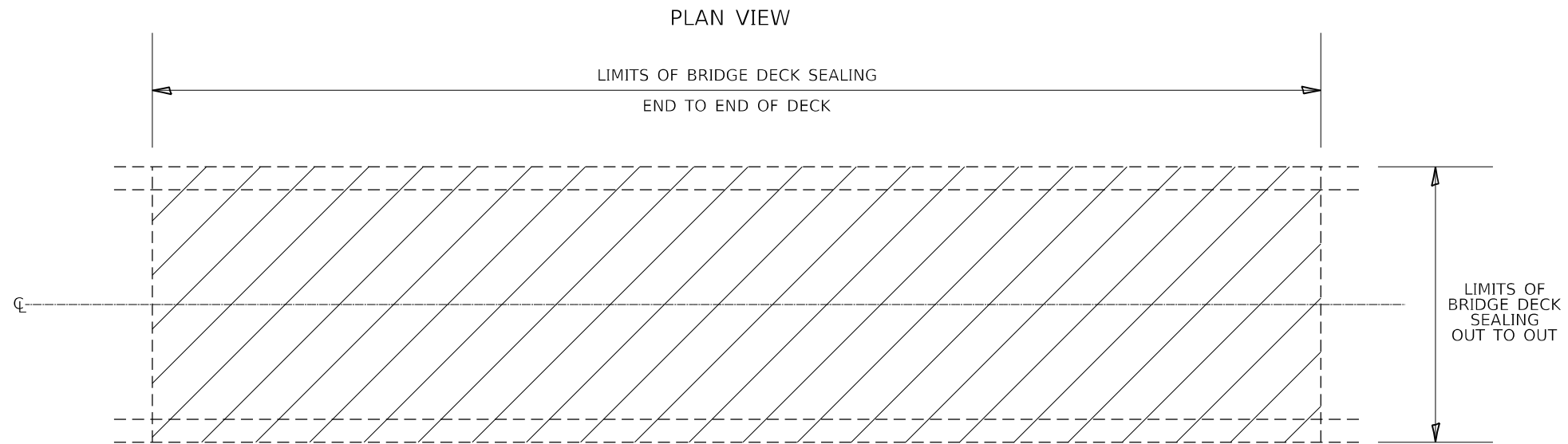
| SN        | Facility Carried | Feature Crossed      | Location             | Length Total | Bridge Rdwy Width | Area to be Sealed | Traffic Control Standard  |
|-----------|------------------|----------------------|----------------------|--------------|-------------------|-------------------|---------------------------|
| 0520020   | ILL 38           | FRANKLIN CREEK       | .6 MI W FRANKLIN GR  | 156.4        | 36                | 6,725             | 701201                    |
| 0520060   | US 52            | GREEN RIVER          | SOUTH EDGE OF AMBOY  | 193.5        | 32                | 7,547             | 701201                    |
| 0520061   | ILL 26           | COON CREEK           | 3.2 MI S OF AMBOY RD | 105          | 32                | 4,095             | 701201                    |
| 0520064   | FAP 561-IL 2 EB  | LITTLE CREEK         | W SAUK VAL. COLLEGE  | 61.5         | 40                | 2,891             | 701400 & 701406 OR 701426 |
| 0520065   | FAP 561-IL 2 EB  | DRAINAGE DITCH       | E SAUK VAL. COLLEGE  | 72.7         | 40                | 3,417             | 701400 & 701406 OR 701426 |
| 0520066   | US 30            | 5 MILE BRANCH CREEK  | 2.5 MI. W. OF IL 26  | 116.8        | 36                | 5,022             | 701201                    |
| 0520067   | US 30            | HOWLAND CREEK        | E. WHITESIDE CO. LN. | 167.8        | 36                | 7,215             | 701201                    |
| 0520068   | IL 251           | BUREAU CREEK         | .9 MI N LASALLE CO   | 120          | 40                | 5,640             | 701201                    |
| * 0520069 | IL 251           | WILLOW CREEK         | 0.8 MI. N. OF US 30  | 103.4        | 31.5              | 3,981             | 701201                    |
| * 0520070 | ILL 251          | STEWARD CREEK        | 2.5 MI. NW. STEWARD  | 90.2         | 31.5              | 3,473             | 701201                    |
| 0710022   | IL 2             | MILL CREEK           | AT WEST EDGE BYRON   | 114          | 40.5              | 5,415             | 701201                    |
| 0710024   | IL 2             | SILVER CREEK         | 3.8 MI N JCT IL 64   | 117          | 40                | 5,499             | 701201                    |
| 0710074   | IL 2             | GALE CREEK           | 3/4 MI S OREGON      | 70.7         | 40                | 3,323             | 701201                    |
| 0710075   | IL 2             | GALE CREEK           | 1 MI S OREGON        | 75.7         | 40.4              | 3,588             | 701201                    |
| 0710076   | IL 2             | GALE CREEK           | 1.1 MI S OREGON      | 78.6         | 40.3              | 3,718             | 701201                    |
| * 1010195 | US 20 EB         | W CHANNEL ROCK RIVER | .5 MI. E OF IL 2     | 407.9        | 42                | 20,273            | 701400 & 701406 OR 701426 |
| * 1010196 | US 20 WB         | W CHANNEL ROCK RIVER | .5 MI. E OF IL 2     | 407.9        | 42                | 20,273            | 701400 & 701406 OR 701426 |
| * 1010197 | US 20 EB         | E CHANNEL ROCK RIVER | .7 MI. E OF IL 2     | 437          | 42                | 21,719            | 701400 & 701406 OR 701426 |
| * 1010198 | US 20 WB         | E CHANNEL ROCK RIVER | .7 MI. E OF IL 2     | 437          | 42                | 21,719            | 701400 & 701406 OR 701426 |
|           |                  |                      |                      |              |                   |                   |                           |

\* NIGHT WORK (HOUR RESTRICTIONS) (SEE SPECIAL PROVISIONS)

MODEL: Default  
FILE: \\nafile.pw.beauregard.com\PIV\DOT\Documents\DOT Office\Dir\dir\_2\Project\Operations\Bridges\Section\Bridges\Deck Sealing\Contract\2023\64519\CADD\64519-Subcover.dgn

|                                     |                  |                 |   |                               |             |          |           |            |               |              |                           |         |    |   |
|-------------------------------------|------------------|-----------------|---|-------------------------------|-------------|----------|-----------|------------|---------------|--------------|---------------------------|---------|----|---|
| USER NAME = David.Doss              | DESIGNED - _____ | REVISED - _____ | <b>STATE OF ILLINOIS<br/>DEPARTMENT OF TRANSPORTATION</b> | <b>SCHEDULE OF QUANTITIES</b> |             |          | F.A. RTE. | SECTION    | COUNTY        | TOTAL SHEETS | SHEET NO.                 |         |    |   |
| PLOT SCALE = 100,000' / in.         | CHECKED - _____  | REVISED - _____ |   | SCALE: _____                  | SHEET _____ | OF _____ | SHEETS    | STA. _____ | TO STA. _____ | VAR.         | D2 BDS 2023-03            | VARIOUS | 17 | 4 |
| PLOT DATE = Sep-12-2022 09:56:08 AM | DATE - _____     | REVISED - _____ |   | CONTRACT NO. 64519            |             |          |           |            |               |              |                           |         |    |   |
|                                     |                  |                 |   |                               |             |          |           |            |               |              | ILLINOIS FED. AID PROJECT |         |    |   |

# SEALING DETAIL



AREA TO BE SEALED

MODEL: Default  
 FILE: Model: p:\ultra-cw-behlfy.com\P\I\DOT\Documents\DOT Office\District 2\Project\Operations\Bridge Section\Bridge Deck Sealing Contract\2023\64519\CADD\64519-shc-cover.dgn

|                                     |                  |                 |
|-------------------------------------|------------------|-----------------|
| USER NAME = David.Doss              | DESIGNED - _____ | REVISED - _____ |
| PLOT SCALE = 100,0000' / in.        | DRAWN - _____    | REVISED - _____ |
| PLOT DATE = Aug-30-2022 02:35:20 PM | CHECKED - _____  | REVISED - _____ |
|                                     | DATE - _____     | REVISED - _____ |

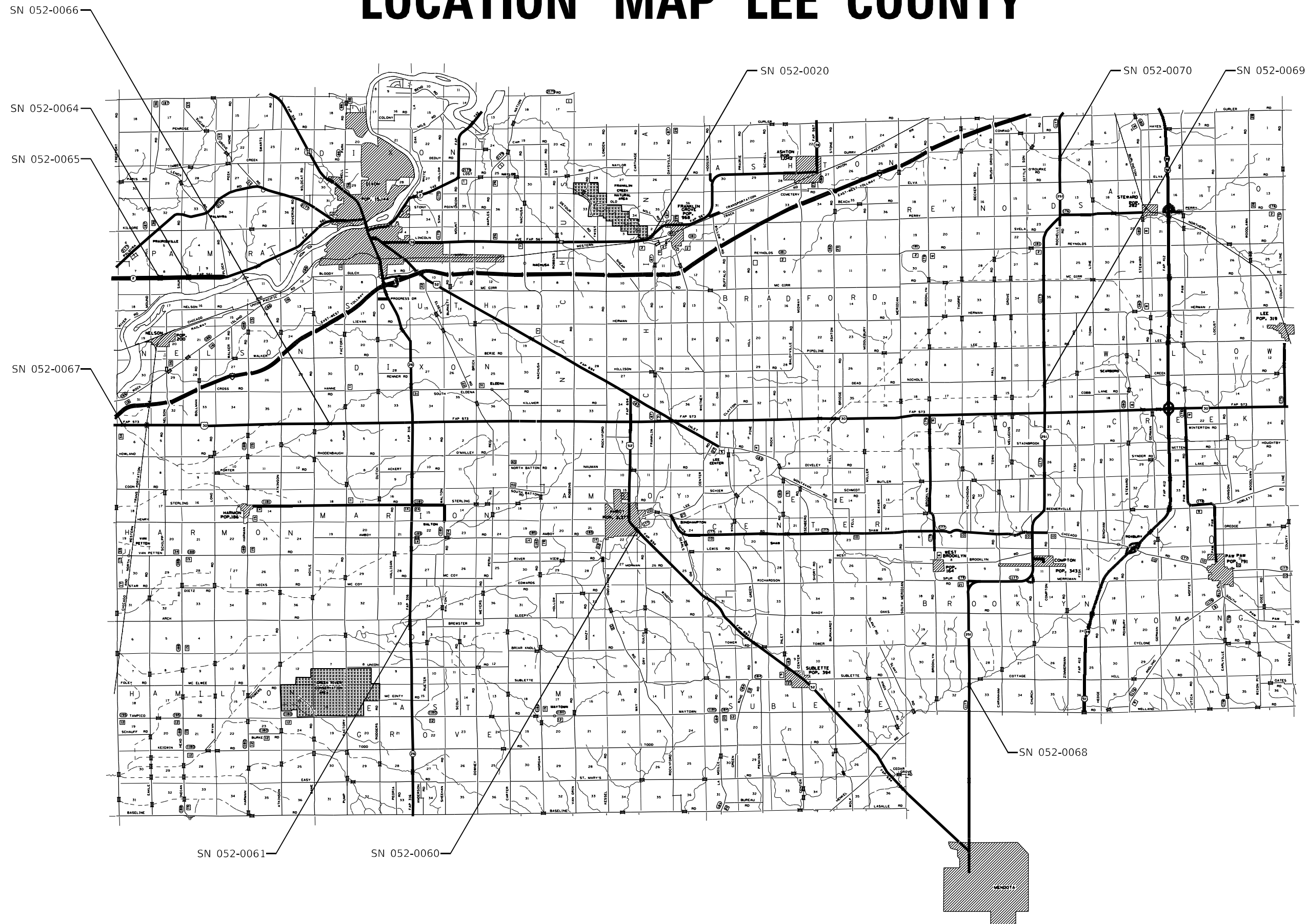
**STATE OF ILLINOIS  
DEPARTMENT OF TRANSPORTATION**

**SEALING DETAIL**

SCALE: \_\_\_\_\_ SHEET \_\_\_\_ OF \_\_\_\_ SHEETS STA. \_\_\_\_\_ TO STA. \_\_\_\_\_

|                           |                |         |                    |           |
|---------------------------|----------------|---------|--------------------|-----------|
| F.A. RTE.                 | SECTION        | COUNTY  | TOTAL SHEETS       | SHEET NO. |
| VAR.                      | D2 BDS 2023-03 | VARIOUS | 17                 | 5         |
| ILLINOIS FED. AID PROJECT |                |         | CONTRACT NO. 64519 |           |

# LOCATION MAP LEE COUNTY



MODEL: Default  
 FILE NAME: p:\bullet-raw-beatkey.com\FW\DOT\Documents\DOT Office\District 2\Project\Operations\Bridges\_Section\Bridges\_Deck\_Sealing\_Contract\2023\64519\CADD\64519-shr-cover.dgn

|                                     |            |           |
|-------------------------------------|------------|-----------|
| USER NAME = David.Doss              | DESIGNED - | REVISED - |
|                                     | DRAWN -    | REVISED - |
| PLOT SCALE = 100,000' / in.         | CHECKED -  | REVISED - |
| PLOT DATE = Aug-30-2022 02:35:30 PM | DATE -     | REVISED - |

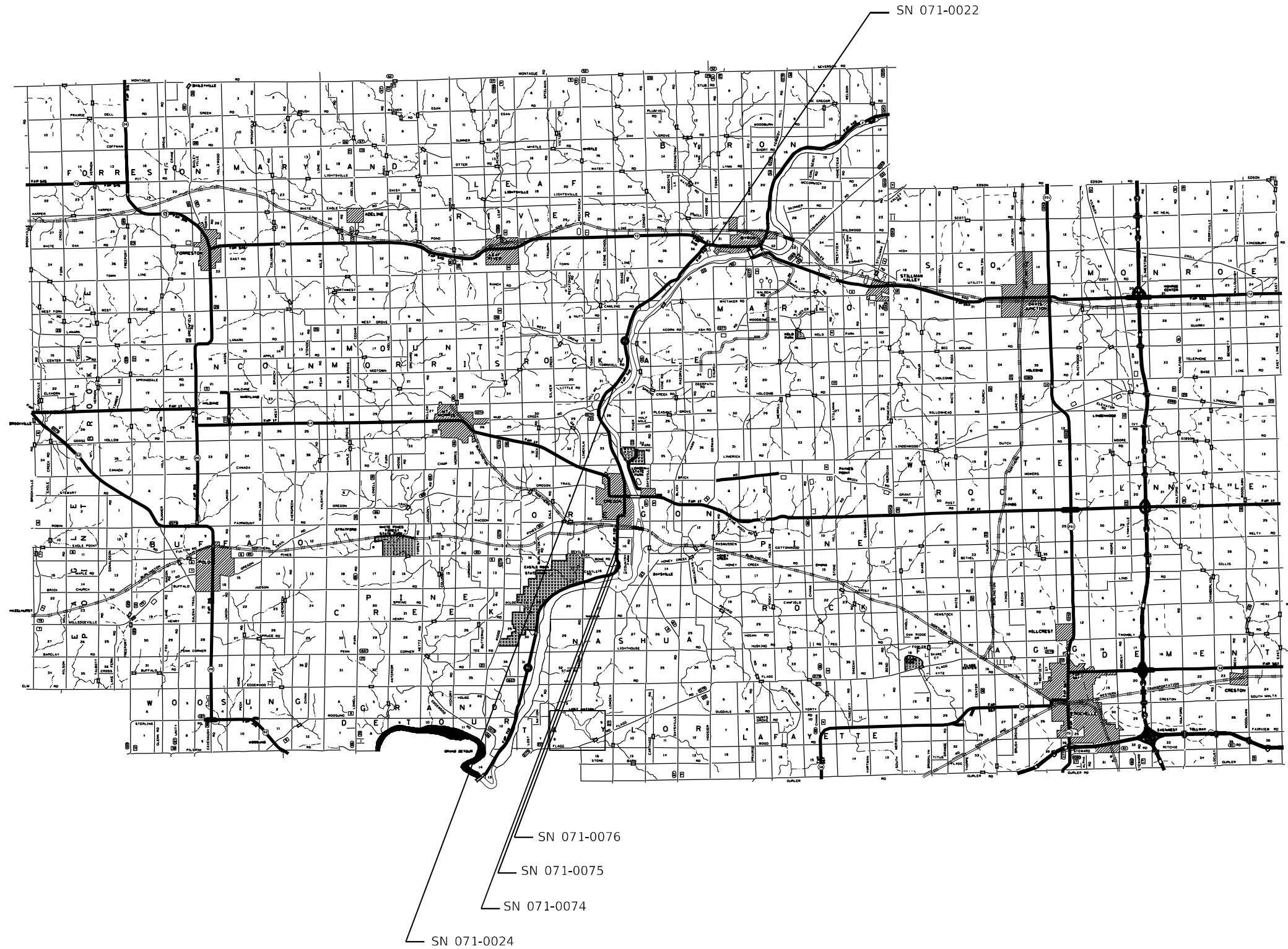
STATE OF ILLINOIS  
DEPARTMENT OF TRANSPORTATION

LOCATION MAP LEE COUNTY

SCALE: \_\_\_\_\_ SHEET \_\_\_\_\_ OF \_\_\_\_\_ SHEETS STA. \_\_\_\_\_ TO STA. \_\_\_\_\_

|                           |                |         |                    |           |
|---------------------------|----------------|---------|--------------------|-----------|
| F.A. RTE.                 | SECTION        | COUNTY  | TOTAL SHEETS       | SHEET NO. |
| VAR.                      | D2 BDS 2023-03 | VARIOUS | 17                 | 6         |
|                           |                |         | CONTRACT NO. 64519 |           |
| ILLINOIS FED. AID PROJECT |                |         |                    |           |

# LOCATION MAP OGLE COUNTY



MODEL: Default  
 FILE: \\bluelife-prod\bluelife\bluelife.com\PI\DOT\Documents\DOT Office\Dir\Dir\_2\Project\Operations\Bridges - Section\Bridges - Deck - Sealing - Contract\2023\64519\CADD\64519-shc-cover.dwg

|                                     |                  |                 |
|-------------------------------------|------------------|-----------------|
| USER NAME = David.Doss              | DESIGNED - _____ | REVISED - _____ |
|                                     | DRAWN - _____    | REVISED - _____ |
| PLOT SCALE = 100,0000' / in.        | CHECKED - _____  | REVISED - _____ |
| PLOT DATE = Aug-30-2022 02:35:46 PM | DATE - _____     | REVISED - _____ |

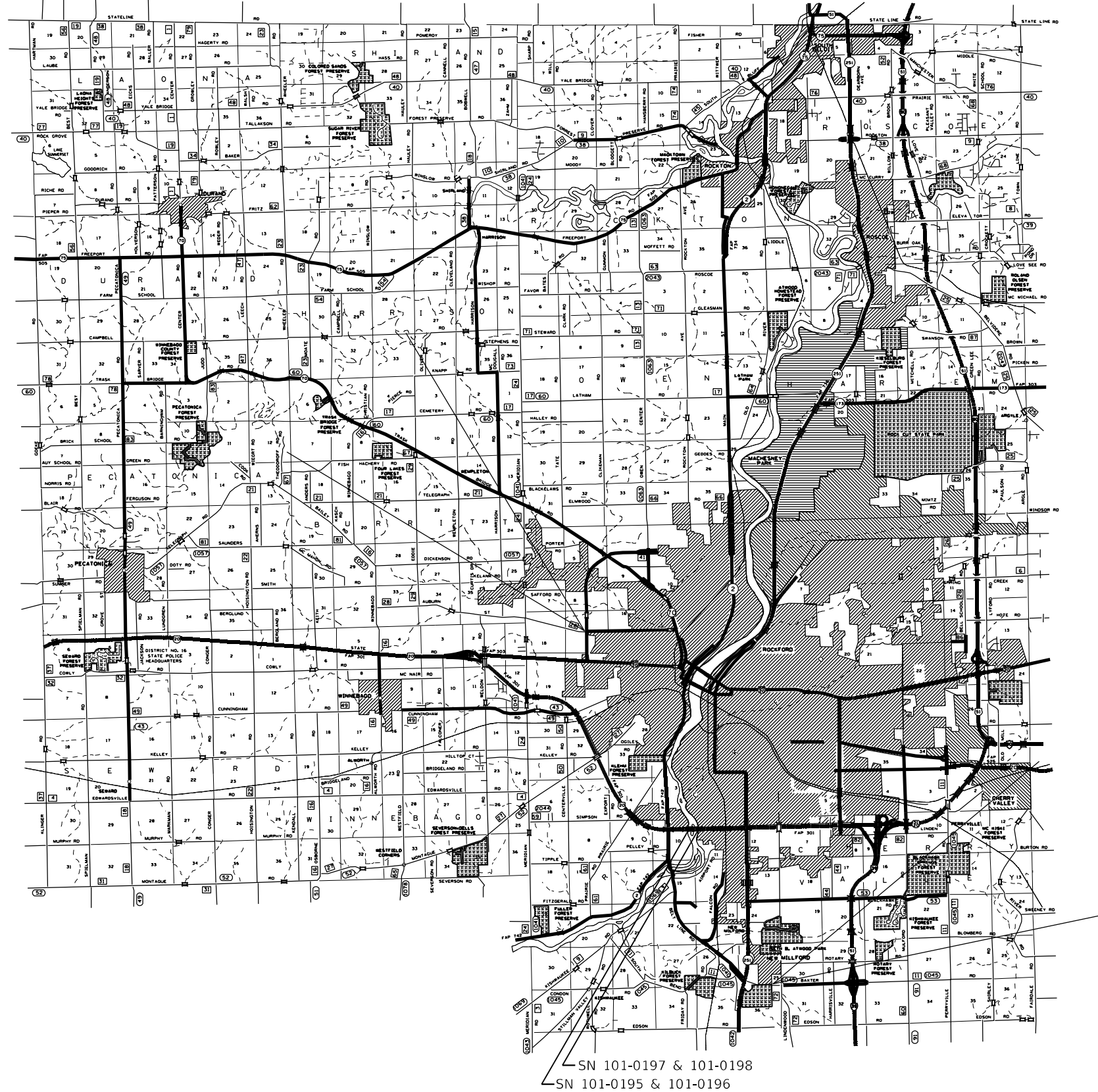
**STATE OF ILLINOIS**  
**DEPARTMENT OF TRANSPORTATION**

**LOCATION MAP WHITESIDE COUNTY**

SCALE: \_\_\_\_\_ SHEET \_\_\_\_\_ OF \_\_\_\_\_ SHEETS STA. \_\_\_\_\_ TO STA. \_\_\_\_\_

|                           |                |         |              |           |
|---------------------------|----------------|---------|--------------|-----------|
| F.A. RTE.                 | SECTION        | COUNTY  | TOTAL SHEETS | SHEET NO. |
| VAR.                      | D2 BDS 2023-03 | VARIOUS | 17           | 7         |
| CONTRACT NO. 64519        |                |         |              |           |
| ILLINOIS FED. AID PROJECT |                |         |              |           |

# LOCATION MAP WINNEBAGO COUNTY



MODEL: Default  
 FILE NAME: p:\bldget-pw-bentley.com\FWIDOT\Documents\DOT Office\Director\_2\Project\Operations\Bldge\_Section\Bldge\_Deck\_Sealing\_Contract\2023\64519\CADD\64519-shr-cover.dgn

|                                     |                  |                 |
|-------------------------------------|------------------|-----------------|
| USER NAME = David.Doss              | DESIGNED - _____ | REVISED - _____ |
|                                     | DRAWN - _____    | REVISED - _____ |
| PLOT SCALE = 100,0000' / in.        | CHECKED - _____  | REVISED - _____ |
| PLOT DATE = Aug-30-2022 02:35:56 PM | DATE - _____     | REVISED - _____ |

**STATE OF ILLINOIS**  
**DEPARTMENT OF TRANSPORTATION**

**LOCATION MAP WINNEBAGO COUNTY**

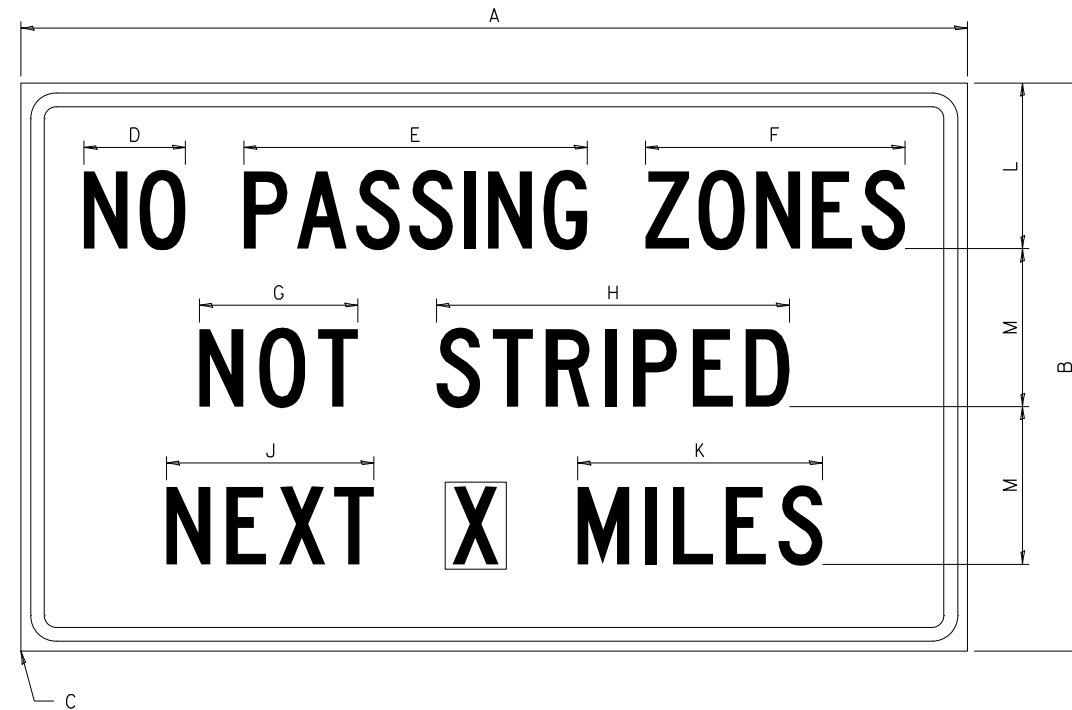
SCALE: \_\_\_\_\_ SHEET \_\_\_\_\_ OF \_\_\_\_\_ SHEETS STA. \_\_\_\_\_ TO STA. \_\_\_\_\_

|                           |                |         |                    |           |
|---------------------------|----------------|---------|--------------------|-----------|
| F.A. RTE.                 | SECTION        | COUNTY  | TOTAL SHEETS       | SHEET NO. |
| VAR.                      | D2 BDS 2023-03 | VARIOUS | 17                 | 8         |
|                           |                |         | CONTRACT NO. 64519 |           |
| ILLINOIS FED. AID PROJECT |                |         |                    |           |



# WORK ZONE SIGN DETAILS

**ILLINOIS STANDARD G20-I100**



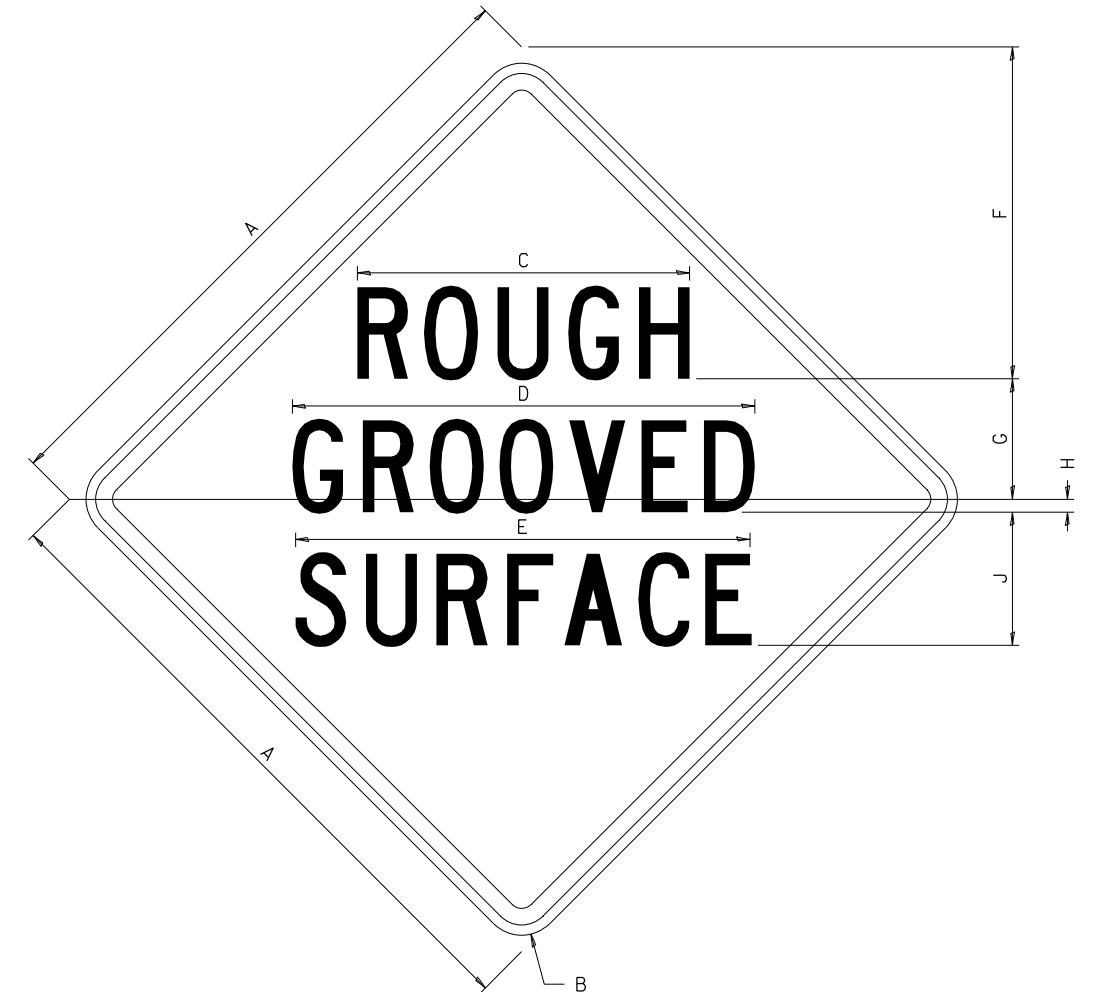
COLOR LEGEND AND BORDER BACKGROUND BLACK ORANGE NON-REFLECTORIZED REFLECTORIZED

| SIGN SIZE | DIMENSIONS |       |      |     |       |       |       |       |       |       |       |       |
|-----------|------------|-------|------|-----|-------|-------|-------|-------|-------|-------|-------|-------|
|           | A          | B     | C    | D   | E     | F     | G     | H     | J     | K     | L     | M     |
| 60 x 36   | 60.00      | 36.00 | 2.25 | 6.4 | 21.80 | 16.40 | 10.00 | 22.40 | 13.20 | 15.50 | 10.50 | 10.00 |

| SIGN SIZE | SERIES BY LINE |    |    | MARGIN | BORDER |
|-----------|----------------|----|----|--------|--------|
|           | 1              | 2  | 3  |        |        |
| 60 x 36   | 5C             | 5C | 5C | 0.625  | 0.875  |

Sign not to scale

**ILLINOIS STANDARD W8-I107**



COLOR LEGEND AND BORDER BACKGROUND BLACK ORANGE NON-REFLECTORIZED REFLECTORIZED

| SIGN SIZE | DIMENSIONS |      |       |       |       |       |      |      |       |  |
|-----------|------------|------|-------|-------|-------|-------|------|------|-------|--|
|           | A          | B    | C     | D     | E     | F     | G    | H    | J     |  |
| 48 x 48   | 48.00      | 3.00 | 25.00 | 34.80 | 34.20 | 24.94 | 9.00 | 1.00 | 10.00 |  |

| SIGN SIZE | SERIES BY LINE |    |    | MARGIN | BORDER |
|-----------|----------------|----|----|--------|--------|
|           | 1              | 2  | 3  |        |        |
| 48 x 48   | 7C             | 7C | 7C | 1.250  | 0.750  |

Sign not to scale

**GENERAL NOTES**

All work to furnish and install these signs shall be included in the cost of the specified traffic control standards and shall not be paid separately.

All Illinois Standard signs shall conform to the latest edition of the "Illinois Standard Highway Signs Book" in effect on the date of invitation for bids.

Signs shall meet the applicable portions of Sections 701 and 720 of the Standard Specifications.

All dimensions are in inches unless otherwise noted.

|   |                                     |            |                   |
|---|-------------------------------------|------------|-------------------|
| FILE NAME =   | USER NAME = David.Doss              | DESIGNED - | REVISED - 3-02-16 |
| p:\dot-pw\bentley.com\PWIDOT\Documents\DOT Offices\District 2\Projects\Operations\DRAWN Section\Bridges Deck Sealing Cont | PROJECT =                           | CHECKED -  | REVISED -         |
|   | PLOT SCALE = 100.0000' / in.        | DATE -     | REVISED -         |
|   | PLOT DATE = Aug-30-2022 02:36:20 PM |            |                   |

**STATE OF ILLINOIS  
DEPARTMENT OF TRANSPORTATION**

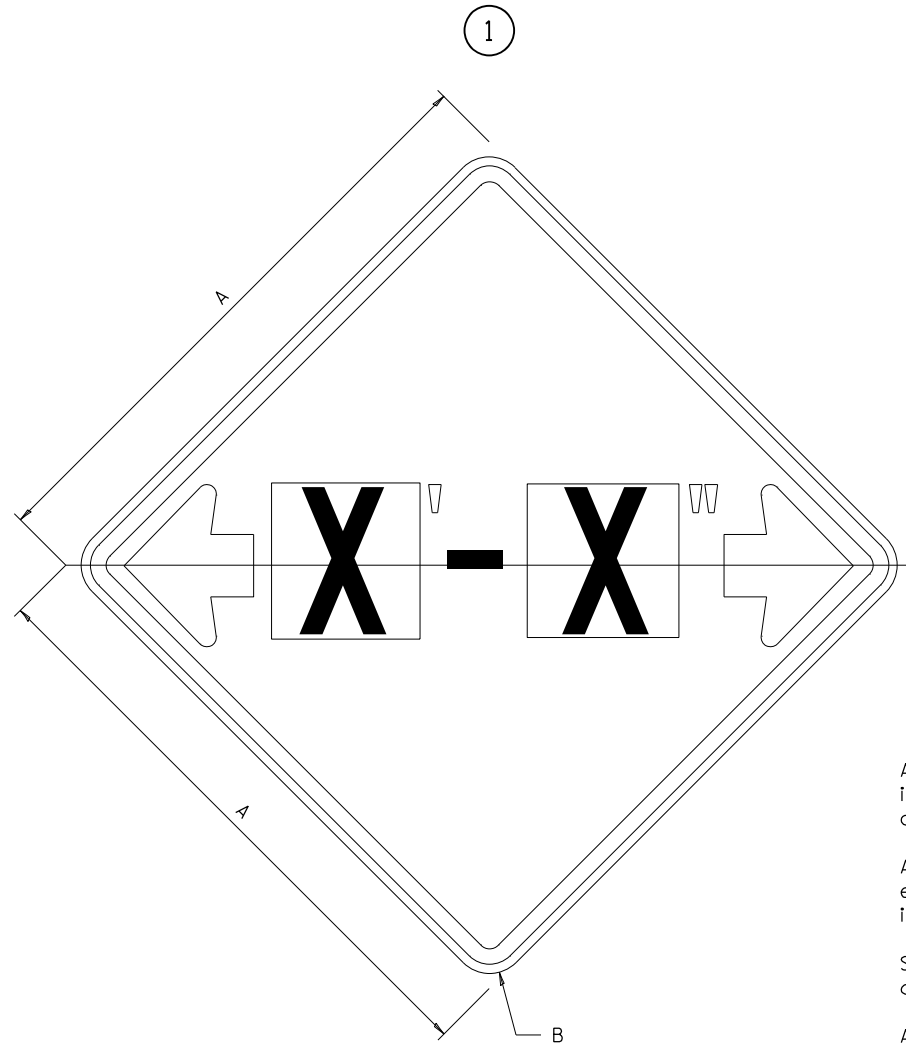
**REGION 2 / DISTRICT 2 STANDARD**

SCALE: SHEET NO. OF SHEETS STA. TO STA.

|   |                |         |                    |           |
|---|----------------|---------|--------------------|-----------|
| F.A. RTE.                                     | SECTION        | COUNTY  | TOTAL SHEETS       | SHEET NO. |
| VAR.  | D2 BDS 2023-03 | VARIOUS | 17                 | 9         |
| FED. ROAD DIST. NO. ILLINOIS FED. AID PROJECT |                |         | CONTRACT NO. 64519 |           |

# WORK ZONE SIGN DETAILS

## ILLINOIS STANDARD W12-I102



### GENERAL NOTES

All work to furnish and install these signs shall be included in the cost of the specified traffic control standards and shall not be paid separately.

All Illinois Standard signs shall conform to the latest edition of the "Illinois Standard Highway Signs Book" in effect on the date of invitation for bids.

Signs shall meet the applicable portions of Sections 701 and 720 of the Standard Specifications.

All dimensions are in inches unless otherwise noted.

COLOR    LEGEND AND BORDER    BLACK    NON-REFLECTORIZED  
 BACKGROUND    FL ORANGE    REFLECTORIZED

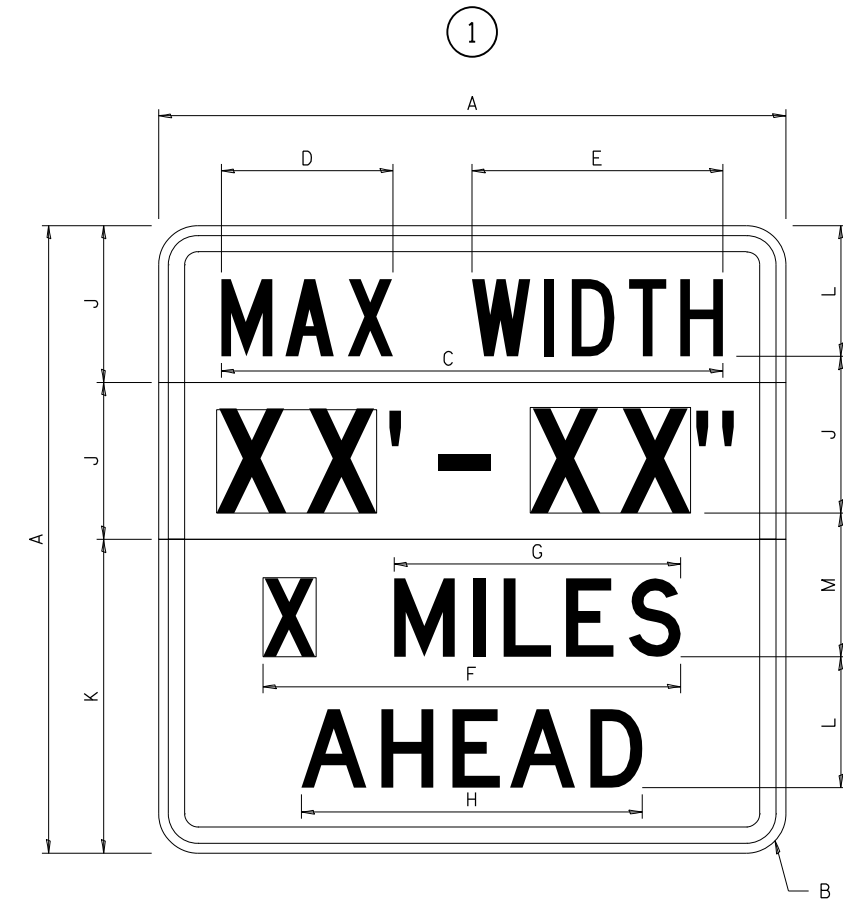
| SIGN SIZE | DIMENSIONS |      |
|-----------|------------|------|
|           | A          | B    |
| 48 x 48   | 48.00      | 3.00 |

① Illinois Standard signs W12-I102 and W12-I103 shall be used as described in the special provisions.

| SIGN SIZE | SERIES BY LINE | MARGIN | BORDER |
|-----------|----------------|--------|--------|
|           | 1              |        |        |
| 48 x 48   | 12C            | 0.750  | 1.250  |

Sign not to scale

## ILLINOIS STANDARD W12-I103



COLOR    LEGEND AND BORDER    BLACK    NON-REFLECTORIZED  
 BACKGROUND    BACKGROUND (WIDTH)    WHITE    REFLECTORIZED  
 FL ORANGE    REFLECTORIZED

| SIGN SIZE | DIMENSIONS |      |       |       |       |       |       |       |       |       |       |       |
|-----------|------------|------|-------|-------|-------|-------|-------|-------|-------|-------|-------|-------|
|           | A          | B    | C     | D     | E     | F     | G     | H     | J     | K     | L     | M     |
| 48 x 48   | 48.00      | 3.00 | 38.40 | 13.20 | 19.20 | 32.00 | 22.00 | 26.20 | 12.00 | 24.00 | 10.00 | 11.00 |

| SIGN SIZE | SERIES BY LINE |    |    |    | MARGIN | BORDER |
|-----------|----------------|----|----|----|--------|--------|
|           | 1              | 2  | 3  | 4  |        |        |
| 48 x 48   | 6C             | 8D | 6D | 6D | 0.750  | 1.250  |

Sign not to scale

XX'-XX" WIDTH AND X MILES ARE VARIABLE TOP AND BOTTOM OF BACKGROUND WHITE

|  |                        |            |                   |
|--|------------------------|------------|-------------------|
| FILE NAME =  | USER NAME = David.Doss | DESIGNED - | REVISED - 3-02-16 |
| pw:\idot-pw.bentley.com\PWIDOT\Documents\IDOT Offices\District 2\Projects\Operations\DRAWN Section\Bridg Deck Sealing Cont | PROJECT = 64519        | CHECKED -  | REVISED -         |
|  |                        | DATE -     | REVISED -         |
|  |                        |            |                   |

STATE OF ILLINOIS  
DEPARTMENT OF TRANSPORTATION

REGION 2 / DISTRICT 2 STANDARD

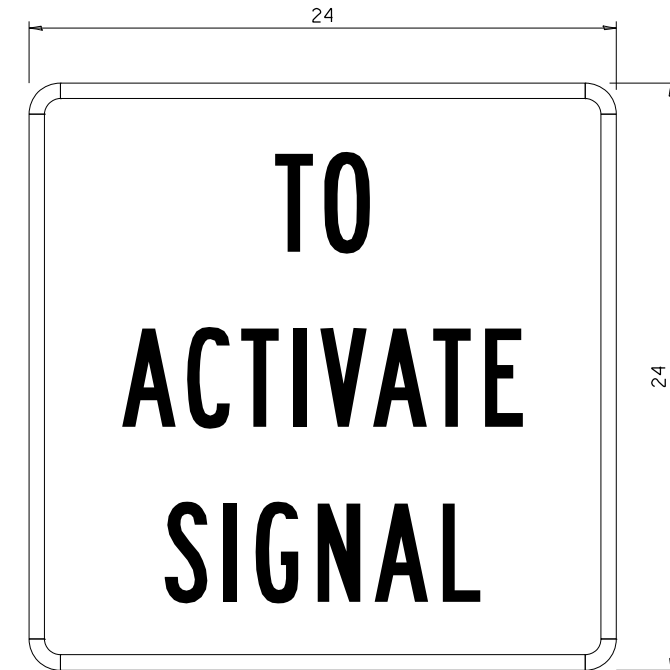
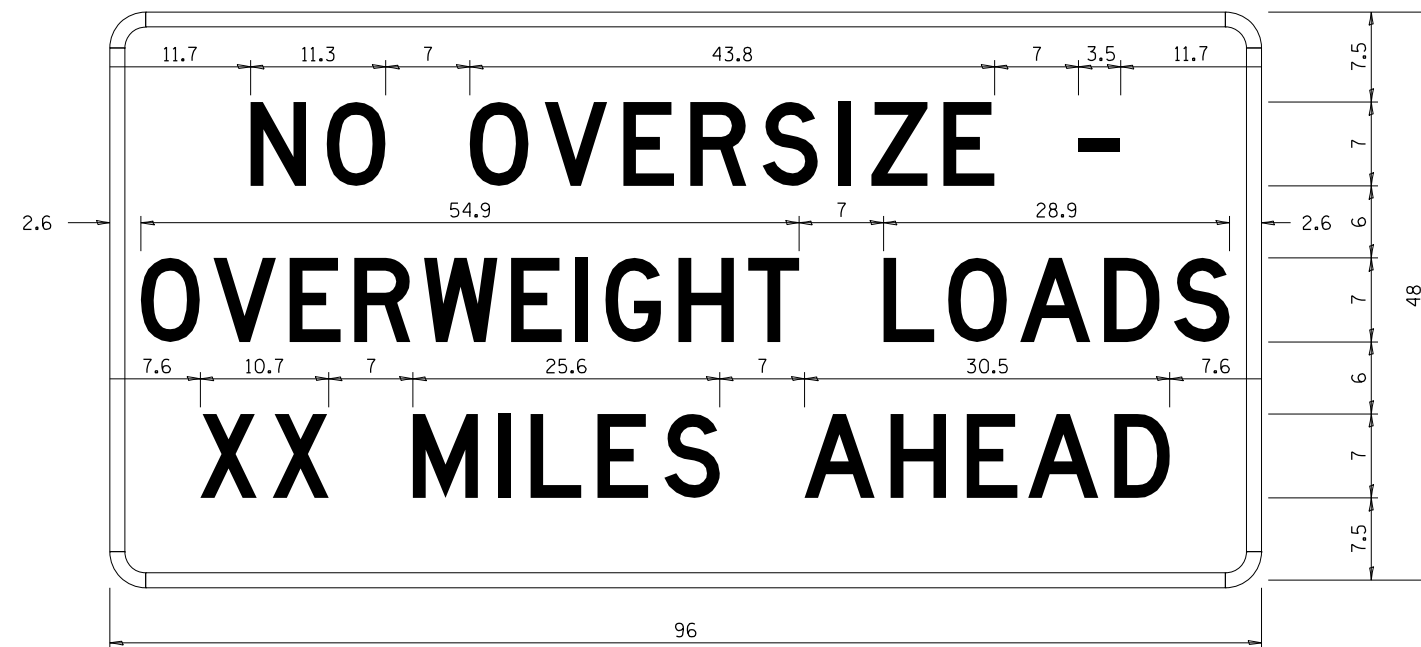
SCALE: \_\_\_\_\_ SHEET NO. \_\_\_\_ OF \_\_\_\_ SHEETS STA. \_\_\_\_\_ TO STA. \_\_\_\_\_

| F.A. RTE.                                       | SECTION        | COUNTY  | TOTAL SHEETS | SHEET NO. |
|---|----------------|---------|--------------|-----------|
| VAR.  | D2 BDS 2023-03 | VARIOUS | 17           | 10        |
| CONTRACT NO. 64519                              |                |         |              |           |
| FED. ROAD DIST. NO. [ILLINOIS] FED. AID PROJECT |                |         |              |           |

# WORK ZONE SIGN DETAILS

## ROAD CLOSED TO OVERSIZED LOADS

## STOP LINE SIGN FOR TEMPORARY SIGNALS



|       |                              |              |                                 |
|-------|------------------------------|--------------|---------------------------------|
| COLOR | LEGEND AND BORDER BACKGROUND | BLACK ORANGE | NON-REFLECTORIZED REFLECTORIZED |
|-------|------------------------------|--------------|---------------------------------|

|       |                              |             |                                 |
|-------|------------------------------|-------------|---------------------------------|
| COLOR | LEGEND AND BORDER BACKGROUND | BLACK WHITE | NON-REFLECTORIZED REFLECTORIZED |
|-------|------------------------------|-------------|---------------------------------|

Permit Loads - Loads Over 13 Feet; 3.0" Radius, 1.3" Border;  
[NO OVERSIZE -] D; [OVERWEIGHT LOADS] D 85% spacing; [XX MILES AHEAD] D;  
Table of letter and object lefts.

| SIGN SIZE | SERIES BY LINE |    |    |
|-----------|----------------|----|----|
|           | 1              | 2  | 3  |
| 24 x 24   | 4C             | 4C | 4C |

|      |      |      |      |      |      |      |      |      |      |      |
|------|------|------|------|------|------|------|------|------|------|------|
| N    | O    | O    | V    | E    | R    | S    | I    | Z    | E    | -    |
| 11.7 | 18.1 | 30.0 | 36.2 | 42.8 | 48.4 | 54.4 | 60.7 | 63.5 | 69.5 | 80.8 |

|     |     |      |      |      |      |      |      |      |      |      |      |      |      |      |
|-----|-----|------|------|------|------|------|------|------|------|------|------|------|------|------|
| O   | V   | E    | R    | W    | E    | I    | G    | H    | T    | L    | O    | A    | D    | S    |
| 2.6 | 8.6 | 15.0 | 20.4 | 26.2 | 33.4 | 38.8 | 41.3 | 47.4 | 53.2 | 64.5 | 69.9 | 75.9 | 82.9 | 88.7 |

|     |      |      |      |      |      |      |      |      |      |      |      |
|-----|------|------|------|------|------|------|------|------|------|------|------|
| X   | X    | M    | I    | L    | E    | S    | A    | H    | E    | A    | D    |
| 7.6 | 13.6 | 25.3 | 32.3 | 35.1 | 40.6 | 46.2 | 57.9 | 65.1 | 71.4 | 76.6 | 83.7 |

Sign not to scale

Sign not to scale

### GENERAL NOTES

All work to furnish and install these signs shall be included in the cost of the specified traffic control standards and shall not be paid separately.

All Illinois Standard signs shall conform to the latest edition of the "Illinois Standard Highway Signs Book" in effect on the date of invitation for bids.

Signs shall meet the applicable portions of Sections 701 and 720 of the Standard Specifications.

All dimensions are in inches unless otherwise noted.

|  |                                     |            |                   |
|--|-------------------------------------|------------|-------------------|
| FILE NAME =  | USER NAME = David.Doss              | DESIGNED - | REVISED - 3-02-16 |
| pw:\idot-pw.bentley.com\PWIDOT\Documents\IDOT Offices\District 2\Projects\Operations\DRAWN Section\Bridg Deck Sealing Cont | VAR. =                              | CHECKED -  | REVISED -         |
|  | PLOT SCALE = 100.0000' / in.        | DATE -     | REVISED -         |
|  | PLOT DATE = Aug-30-2022 02:36:37 PM |            |                   |

STATE OF ILLINOIS  
DEPARTMENT OF TRANSPORTATION

REGION 2 / DISTRICT 2 STANDARD

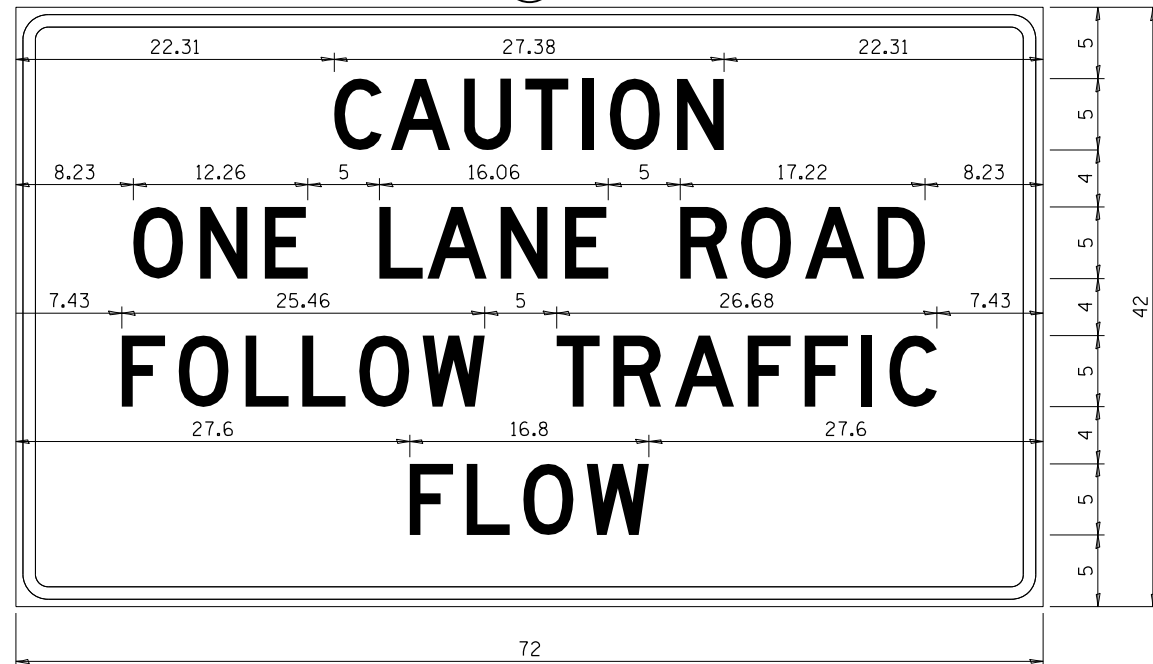
SCALE: \_\_\_\_\_ SHEET NO. \_\_\_ OF \_\_\_ SHEETS STA. \_\_\_\_\_ TO STA. \_\_\_\_\_

|   |                |         |              |           |
|---|----------------|---------|--------------|-----------|
| F.A. RTE.                                       | SECTION        | COUNTY  | TOTAL SHEETS | SHEET NO. |
| VAR.  | D2 BDS 2023-03 | VARIOUS | 17           | 11        |
| CONTRACT NO. 64519                              |                |         |              |           |
| FED. ROAD DIST. NO. - ILLINOIS FED. AID PROJECT |                |         |              |           |

**ENTRANCE SIGN FOR USE  
WITH TEMPORARY SIGNALS**

**WORK ZONE SIGN DETAILS**

②



COLOR LEGEND AND BORDER BACKGROUND BLACK ORANGE NON-REFLECTORIZED REFLECTORIZED

2.25" Radius, 0.88" Border, 0.50" Indent;  
[CAUTION] D; [ONE LANE ROAD] D;  
[FOLLOW TRAFFIC] D; [FLOW] D

② This sign shall be installed at entrances located between the temporary signals as shown in the staging plans.

**Table Of Widths And Spaces**

|       |      |      |      |      |      |      |      |       |      |      |      |      |      |       |
|-------|------|------|------|------|------|------|------|-------|------|------|------|------|------|-------|
| 22.31 | C    | A    | U    | T    | I    | O    | N    | 22.31 |      |      |      |      |      |       |
| 3.36  | 3.36 | 0.62 | 4.18 | 0.94 | 3.36 | 0.94 | 3.04 | 0.94  | 0.78 | 1.17 | 3.52 | 1.17 | 3.36 | 22.31 |

|      |      |      |      |      |
|------|------|------|------|------|
| 8.23 | O    | N    | E    |      |
| 3.51 | 1.17 | 3.36 | 1.18 | 3.04 |

|      |      |      |      |      |      |      |
|------|------|------|------|------|------|------|
| 5.00 | L    | A    | N    | E    |      |      |
| 3.05 | 0.31 | 4.18 | 0.94 | 3.36 | 1.17 | 3.05 |

|      |      |      |      |      |      |      |      |
|------|------|------|------|------|------|------|------|
| 5.00 | R    | O    | A    | D    | 8.23 |      |      |
| 3.36 | 0.93 | 3.52 | 0.94 | 4.18 | 0.93 | 3.36 | 8.23 |

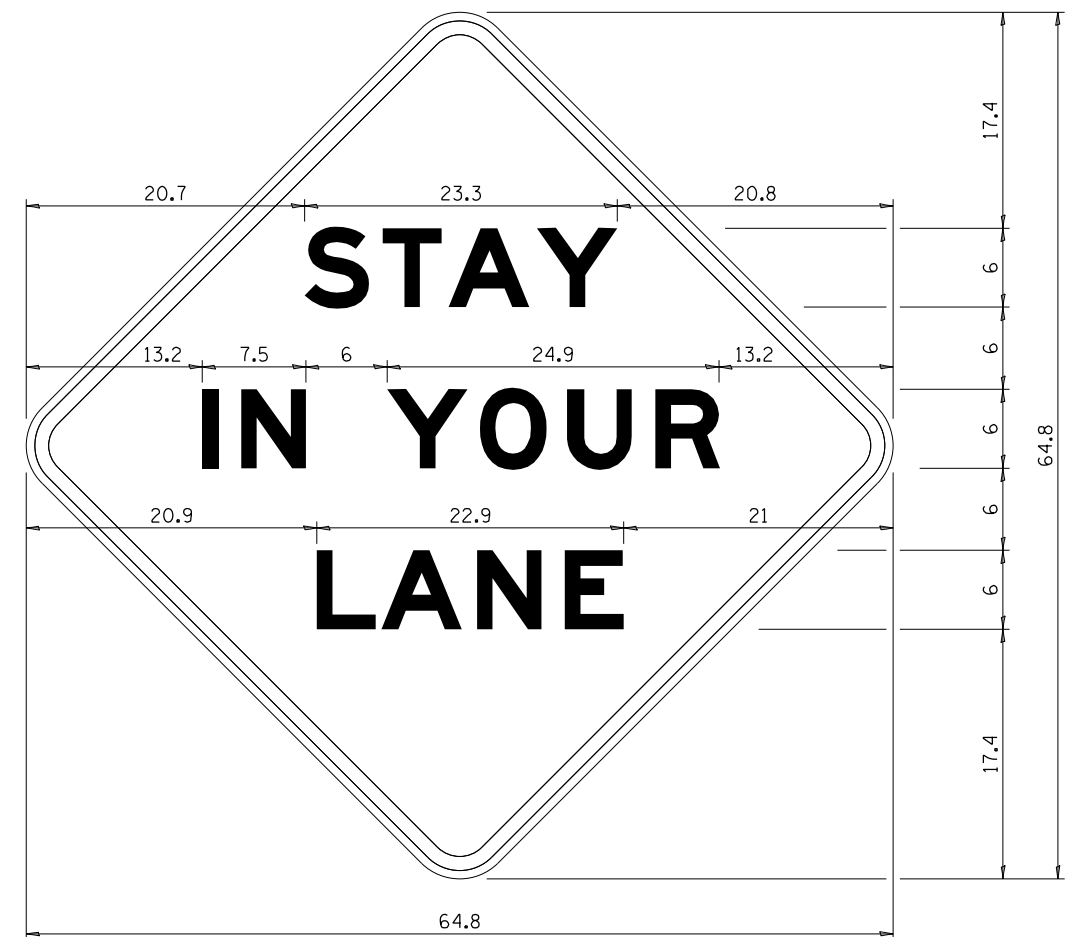
|      |      |      |      |      |      |      |      |      |      |      |
|------|------|------|------|------|------|------|------|------|------|------|
| 7.43 | F    | O    | L    | L    | O    | W    |      |      |      |      |
| 3.04 | 0.94 | 3.52 | 1.17 | 3.04 | 0.94 | 3.05 | 0.94 | 3.51 | 0.94 | 4.37 |

|      |      |      |      |      |      |      |      |      |      |      |      |      |      |
|------|------|------|------|------|------|------|------|------|------|------|------|------|------|
| 5.00 | T    | R    | A    | F    | F    | I    | C    | 7.43 |      |      |      |      |      |
| 3.05 | 0.94 | 3.36 | 0.94 | 4.18 | 0.93 | 3.05 | 0.94 | 3.04 | 0.94 | 0.78 | 1.18 | 3.35 | 7.43 |

|       |      |      |      |      |       |      |       |
|-------|------|------|------|------|-------|------|-------|
| 27.60 | F    | L    | O    | W    | 27.60 |      |       |
| 3.05  | 0.94 | 3.04 | 0.94 | 3.52 | 0.93  | 4.38 | 27.60 |

Sign not to scale

**STAY IN YOUR LANE**



COLOR LEGEND AND BORDER BACKGROUND BLACK ORANGE NON-REFLECTORIZED REFLECTORIZED

48.0" across sides 3.8" Radius, 1.0" Border, 0.6" Indent;  
"STAY" E Mod; "IN YOUR" E Mod; "LANE" E Mod;

**Table of Letter and Object Lefts**

|      |      |      |      |
|------|------|------|------|
| S    | T    | A    | Y    |
| 20.7 | 26.8 | 31.6 | 38.0 |

|      |      |      |      |      |      |
|------|------|------|------|------|------|
| I    | N    | Y    | O    | U    | R    |
| 13.2 | 15.9 | 26.7 | 33.9 | 40.5 | 46.8 |

|      |      |      |      |
|------|------|------|------|
| L    | A    | N    | E    |
| 20.9 | 25.8 | 33.1 | 39.4 |

Sign not to scale

**GENERAL NOTES**

All work to furnish and install these signs shall be included in the cost of the specified traffic control standards and shall not be paid separately.

All Illinois Standard signs shall conform to the latest edition of the "Illinois Standard Highway Signs Book" in effect on the date of invitation for bids.

Signs shall meet the applicable portions of Sections 701 and 720 of the Standard Specifications.

All dimensions are in inches unless otherwise noted.

|   |                        |            |                   |
|---|------------------------|------------|-------------------|
| FILE NAME =   | USER NAME = David.Doss | DESIGNED - | REVISED - 3-02-16 |
| pw:\idot-pw\entley.com\PWIDOT\Documents\IDOT Offices\District 2\Projects\Operations\DRAWN Section\Bridg Deck Sealing Cont | PROJECT = 64519        | CHECKED -  | REVISED -         |
|   |                        | DATE -     | REVISED -         |
|   |                        |            |                   |

**STATE OF ILLINOIS  
DEPARTMENT OF TRANSPORTATION**

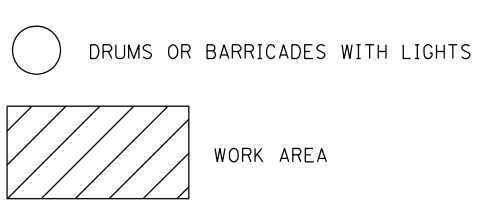
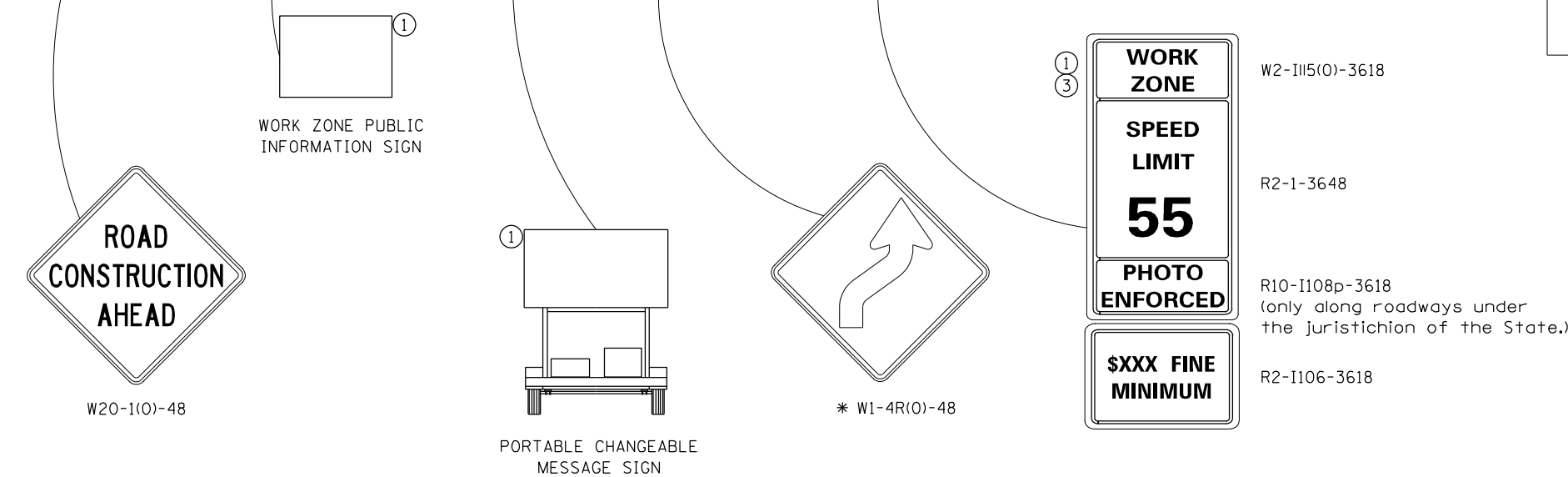
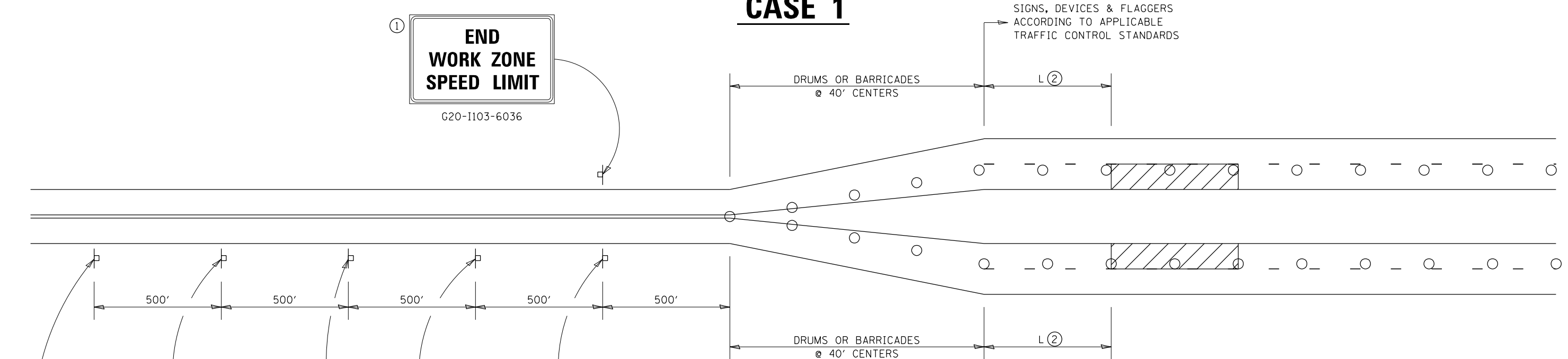
**REGION 2 / DISTRICT 2 STANDARD**

SCALE: SHEET NO. OF SHEETS STA. TO STA.

|   |                |         |              |           |
|---|----------------|---------|--------------|-----------|
| F.A. RTE.                                     | SECTION        | COUNTY  | TOTAL SHEETS | SHEET NO. |
| VAR.  | D2 BDS 2023-03 | VARIOUS | 17           | 12        |
| CONTRACT NO. 64519                            |                |         |              |           |
| FED. ROAD DIST. NO. ILLINOIS FED. AID PROJECT |                |         |              |           |

# TRAFFIC CONTROL FOR TRANSITION AREAS

## CASE 1



NOTE: STANDARDS 701301 AND 701306 SHALL NOT BE USED WITHIN 500 FEET OF THE TRANSITION.

\* DEPENDS ON GEOMETRICS OF THE TRANSITION. MAY SWITCH THE "STAY IN YOUR LANE" AND "WEAVE SIGNS"

SIGNS, DEVICES & FLAGGERS ACCORDING TO APPLICABLE TRAFFIC CONTROL STANDARDS

GENERAL NOTES  
THIS DETAIL IS TO BE USED IN CONJUNCTION WITH THE APPLICABLE MULTILANE TRAFFIC CONTROL AND PROTECTION STANDARD.

1. If applicable. Use if shown on applicable multilane Traffic Control and Protection Standard being used.
2. If the work is within 2500 feet of the transition when the speed is > 40 mph, or 1500 feet for all other speeds, the detail shall be used.
3. WORK ZONE SPEED LIMIT 55 SIGN ASSEMBLY shall be replaced with WORK ZONE SPEED LIMIT 45 SIGN ASSEMBLY where the workers are within 500 feet of the transition.

THIS TRAFFIC CONTROL DETAIL SHALL BE INCLUDED IN THE COST OF SPECIFIED TRAFFIC CONTROL STANDARDS OR ITEMS.

|  |                        |            |                   |
|--|------------------------|------------|-------------------|
| FILE NAME =  | USER NAME = David.Doss | DESIGNED - | REVISED - 4-20-17 |
| pw:\idot-pw.bentley.com\PWIDOT\Documents\IDOT Offices\District 2\Projects\Operations\DRAWN Section\Bridg Deck Sealing Cont | PROJECT = 64519        | CHECKED -  | REVISED - 8-27-13 |
|  |                        | DATE -     | REVISED - 1-16-13 |

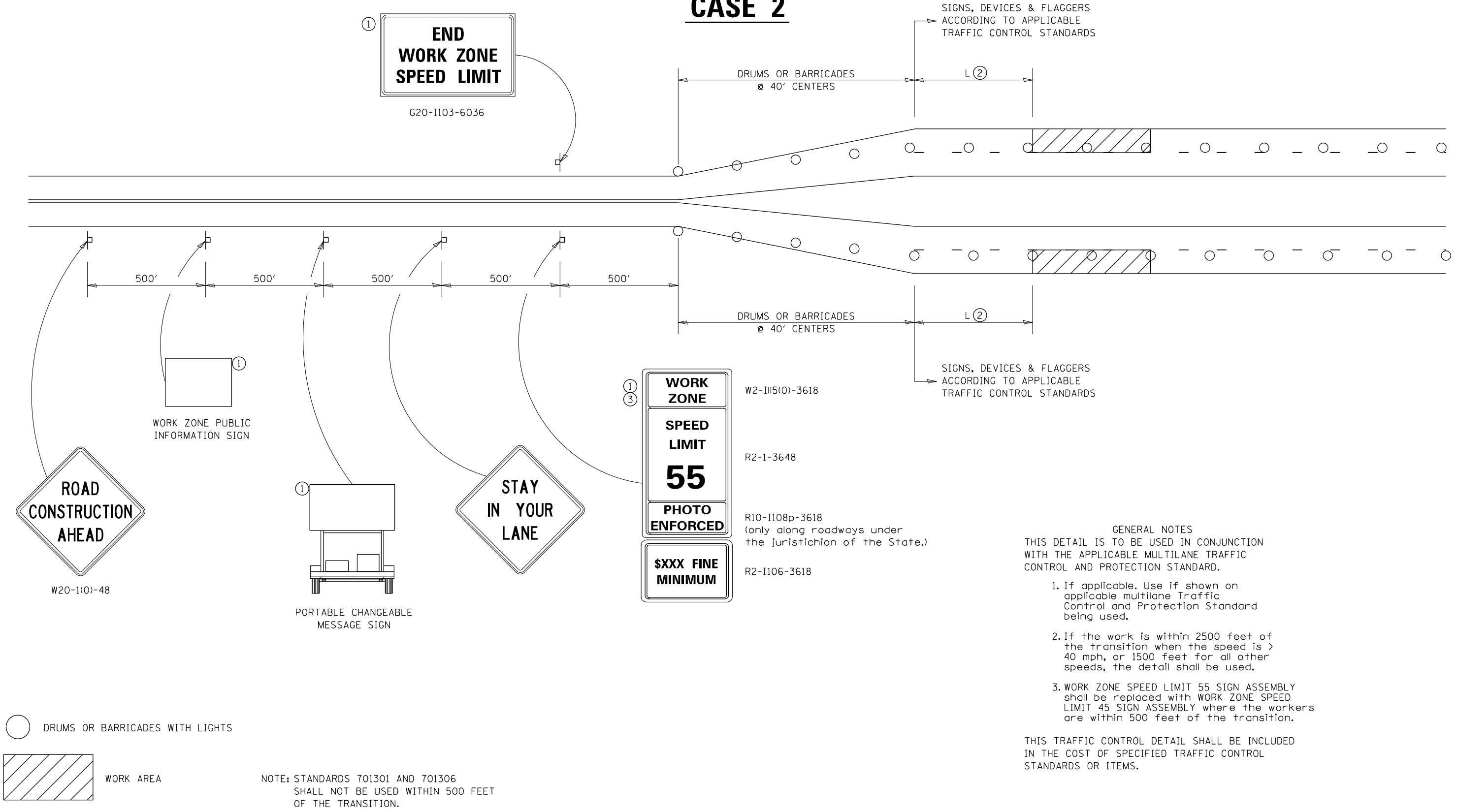
STATE OF ILLINOIS  
DEPARTMENT OF TRANSPORTATION

|                                |                             |
|--------------------------------|-----------------------------|
| REGION 2 / DISTRICT 2 STANDARD |                             |
| SCALE: _____                   | SHEET NO. ___ OF ___ SHEETS |
| STA. _____ TO STA. _____       |                             |

|   |                |         |              |           |
|---|----------------|---------|--------------|-----------|
| F.A. RTÉ.                                       | SECTION        | COUNTY  | TOTAL SHEETS | SHEET NO. |
| VAR.  | D2 BDS 2023-03 | VARIOUS | 17           | 13        |
| CONTRACT NO. 64519                              |                |         |              |           |
| FED. ROAD DIST. NO. _ ILLINOIS FED. AID PROJECT |                |         |              |           |

# TRAFFIC CONTROL FOR TRANSITION AREAS

## CASE 2



- GENERAL NOTES**
- THIS DETAIL IS TO BE USED IN CONJUNCTION WITH THE APPLICABLE MULTILANE TRAFFIC CONTROL AND PROTECTION STANDARD.
1. If applicable. Use if shown on applicable multilane Traffic Control and Protection Standard being used.
  2. If the work is within 2500 feet of the transition when the speed is > 40 mph, or 1500 feet for all other speeds, the detail shall be used.
  3. WORK ZONE SPEED LIMIT 55 SIGN ASSEMBLY shall be replaced with WORK ZONE SPEED LIMIT 45 SIGN ASSEMBLY where the workers are within 500 feet of the transition.

THIS TRAFFIC CONTROL DETAIL SHALL BE INCLUDED IN THE COST OF SPECIFIED TRAFFIC CONTROL STANDARDS OR ITEMS.

|  |                        |            |                   |
|--|------------------------|------------|-------------------|
| FILE NAME =  | USER NAME = David.Doss | DESIGNED - | REVISED - 4-20-17 |
| pw:\idot-pw.bentley.com\PWIDOT\Documents\IDOT Offices\District 2\Projects\Operations\DRAWN Section\Bridg Deck Sealing Cont | PROJECT = 64519        | CHECKED -  | REVISED - 8-27-13 |
|  |                        | DATE -     | REVISED - 1-16-13 |
|  |                        |            |                   |

**STATE OF ILLINOIS  
DEPARTMENT OF TRANSPORTATION**

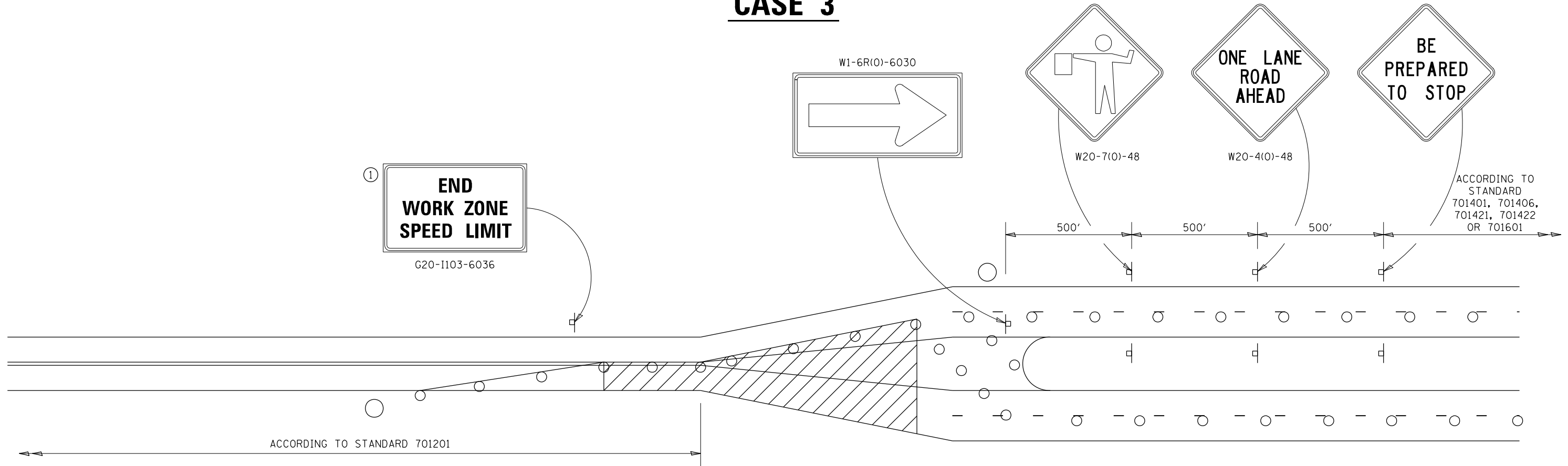
**REGION 2 / DISTRICT 2 STANDARD**

SCALE: \_\_\_\_\_ SHEET NO. \_\_\_ OF \_\_\_ SHEETS STA. \_\_\_\_\_ TO STA. \_\_\_\_\_

|   |                |         |              |           |
|---|----------------|---------|--------------|-----------|
| F.A. RTÉ.                                       | SECTION        | COUNTY  | TOTAL SHEETS | SHEET NO. |
| VAR.  | D2 BDS 2023-03 | VARIOUS | 17           | 14        |
| CONTRACT NO. 64519                              |                |         |              |           |
| FED. ROAD DIST. NO. _ ILLINOIS FED. AID PROJECT |                |         |              |           |

# TRAFFIC CONTROL FOR TRANSITION AREAS

## CASE 3



**GENERAL NOTES**  
 THIS DETAIL IS TO BE USED IN CONJUNCTION WITH THE APPLICABLE MULTILANE TRAFFIC CONTROL AND PROTECTION STANDARD.

1. If applicable, Use if shown on applicable multilane Traffic Control and Protection Standard being used.
2. If the work is within 2500 feet of the transition when the speed is > 40 mph, or 1500 feet for all other speeds, the detail shall be used.
3. WORK ZONE SPEED LIMIT 55 SIGN ASSEMBLY shall be replaced with WORK ZONE SPEED LIMIT 45 SIGN ASSEMBLY where the workers are within 500 feet of the transition.

THIS TRAFFIC CONTROL DETAIL SHALL BE INCLUDED IN THE COST OF SPECIFIED TRAFFIC CONTROL STANDARDS OR ITEMS.

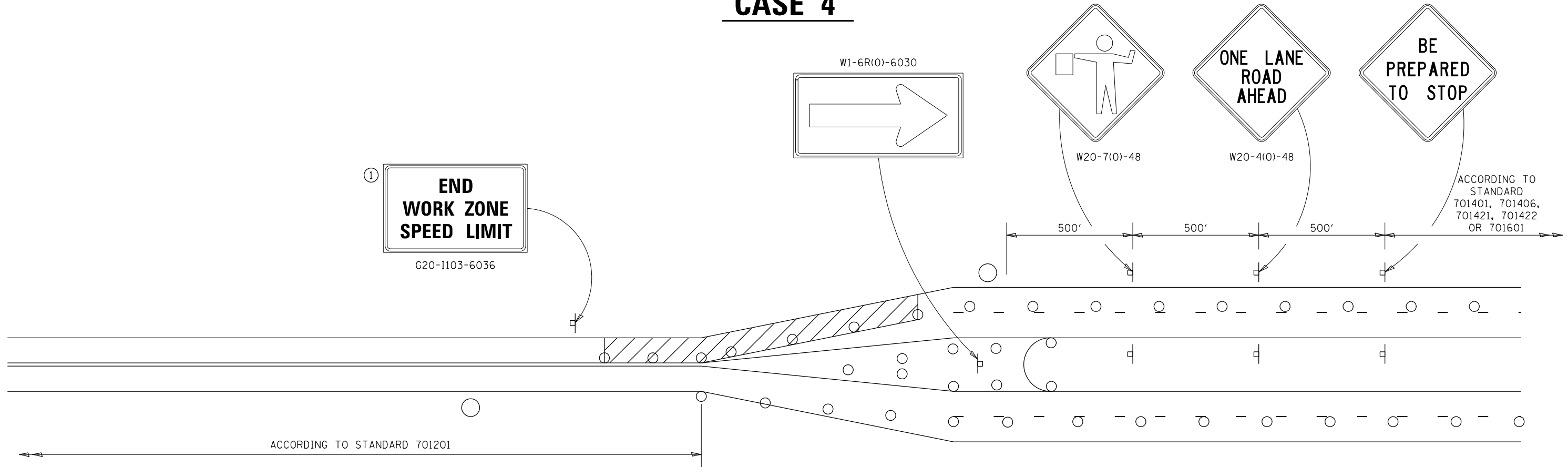
- FLAGGER WITH TRAFFIC CONTROL SIGN
- DRUMS OR BARRICADES WITH LIGHTS
- WORK AREA

NOTE: STANDARDS 701301 AND 701306 SHALL NOT BE USED WITHIN 500 FEET OF THE TRANSITION.

|  |                        |            |                   |   |                                       |                             |   |                          |              |   |    |
|--|------------------------|------------|-------------------|---|---------------------------------------|-----------------------------|---|--------------------------|--------------|---|----|
| FILE NAME =                            | USER NAME = David.Doss | DESIGNED - | REVISED - 4-20-17 | <b>STATE OF ILLINOIS<br/>DEPARTMENT OF TRANSPORTATION</b> | <b>REGION 2 / DISTRICT 2 STANDARD</b> | F.A. RTE.                   | SECTION                                       | COUNTY                   | TOTAL SHEETS | SHEET NO.                                   |    |
| DRAWN Section\Bridge Deck Sealing Cont |                        |            |                   |   |                                       | CONTRACT NO. 64519          | VAR.  | D2 BDS 2023-03           | VARIOUS      | 17  | 15 |
| PLOT SCALE = 100.0000' / in.           |                        |            |                   |   |                                       | CONTRACT NO. 64519          | FED. ROAD DIST. NO. ILLINOIS FED. AID PROJECT |                          |              |   |    |
| PLOT DATE = Aug-30-2022 02:37:20 PM    |                        |            |                   | DATE -  | SCALE: _____                          | SHEET NO. ___ OF ___ SHEETS |   | STA. _____ TO STA. _____ |              | <b>TRAFFIC CONTROL FOR TRANSITION AREAS</b> |    |

# TRAFFIC CONTROL FOR TRANSITION AREAS

## CASE 4



**GENERAL NOTES**  
 THIS DETAIL IS TO BE USED IN CONJUNCTION WITH THE APPLICABLE MULTILANE TRAFFIC CONTROL AND PROTECTION STANDARD.

1. If applicable, Use if shown on applicable multilane Traffic Control and Protection Standard being used.
2. If the work is within 2500 feet of the transition when the speed is > 40 mph, or 1500 feet for all other speeds, the detail shall be used.
3. WORK ZONE SPEED LIMIT 55 SIGN ASSEMBLY shall be replaced with WORK ZONE SPEED LIMIT 45 SIGN ASSEMBLY where the workers are within 500 feet of the transition.

THIS TRAFFIC CONTROL DETAIL SHALL BE INCLUDED IN THE COST OF SPECIFIED TRAFFIC CONTROL STANDARDS OR ITEMS.

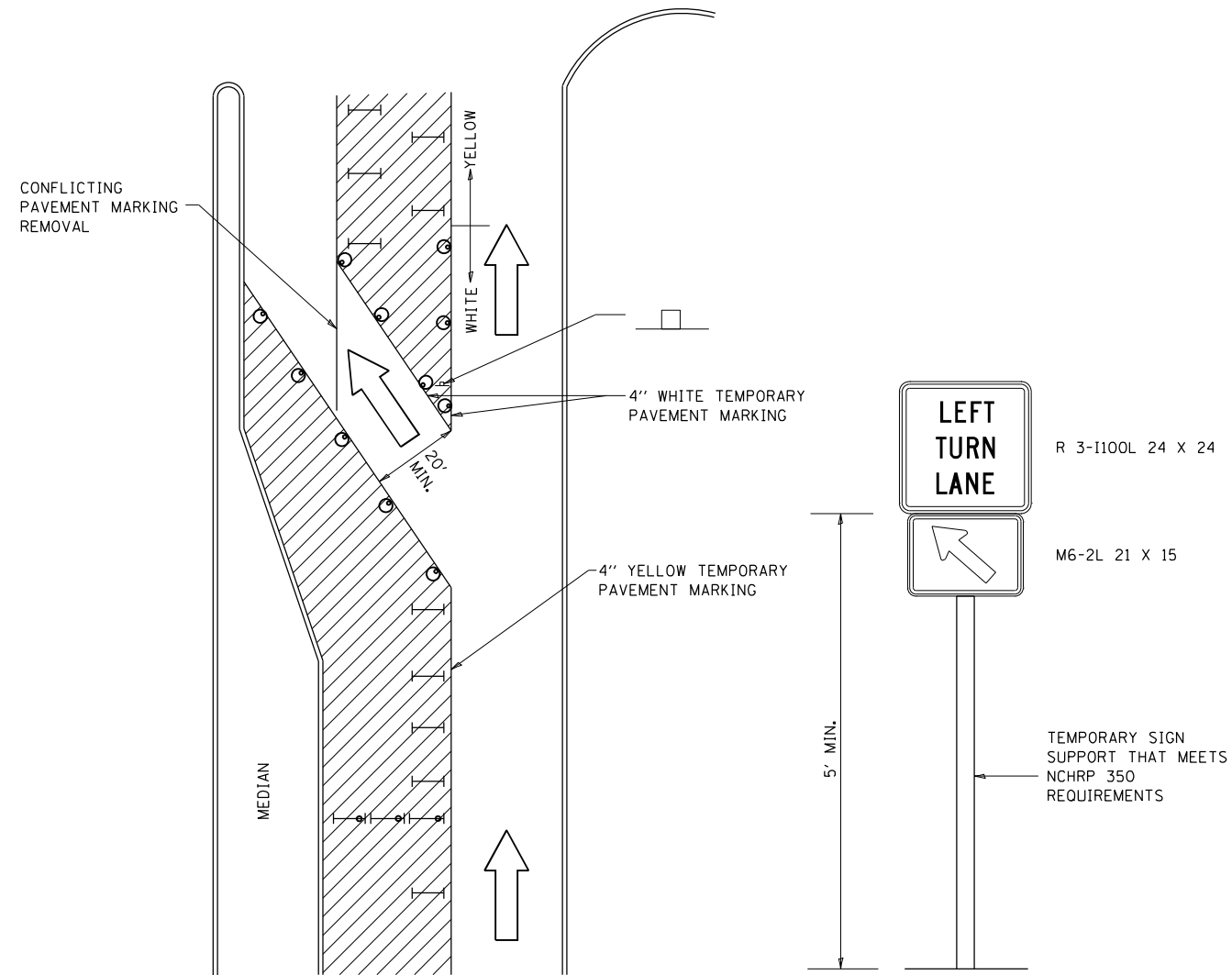
- FLAGGER WITH TRAFFIC CONTROL SIGN
- DRUMS OR BARRICADES WITH LIGHTS
- WORK AREA

NOTE: STANDARDS 701301 AND 701306 SHALL NOT BE USED WITHIN 500 FEET OF THE TRANSITION.


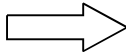
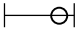



|  |                        |            |                   |   |                                       |                             |   |                          |              |   |    |
|--|------------------------|------------|-------------------|---|---------------------------------------|-----------------------------|---|--------------------------|--------------|---|----|
| FILE NAME =                            | USER NAME = David.Doss | DESIGNED - | REVISED - 4-20-17 | <b>STATE OF ILLINOIS<br/>DEPARTMENT OF TRANSPORTATION</b> | <b>REGION 2 / DISTRICT 2 STANDARD</b> | F.A. RTE.                   | SECTION                                       | COUNTY                   | TOTAL SHEETS | SHEET NO.                                   |    |
| DRAWN Section\Bridge Deck Sealing Cont |                        |            |                   |   |                                       | CONTRACT NO. 64519          | VAR.  | D2 BDS 2023-03           | VARIOUS      | 17  | 16 |
| PLOT SCALE = 100.0000' / in.           |                        |            |                   |   |                                       | CONTRACT NO. 64519          | FED. ROAD DIST. NO. ILLINOIS FED. AID PROJECT |                          |              |   |    |
| PLOT DATE = Aug-30-2022 02:37:29 PM    |                        |            |                   | DATE -  | SCALE: _____                          | SHEET NO. ___ OF ___ SHEETS |   | STA. _____ TO STA. _____ |              | <b>TRAFFIC CONTROL FOR TRANSITION AREAS</b> |    |



# TRAFFIC CONTROL AND PROTECTION AT TURN BAYS (TO REMAIN OPEN TO TRAFFIC)



## LEGEND

-  WORK AREA
-  LANE OPEN TO TRAFFIC
-  TYPE I OR II BARRICADE OR DRUM WITH FLASHING BURNING LIGHT
-  DRUM OR BARRICADE WITH STEADY BURN LIGHT
-  SIGN (SEE DETAIL)
-  TYPE I OR II CHECK BARRICADE WITH STEADY LIGHT BURN

REVISED - 10-14-11

## GENERAL NOTES

CONES MAY BE SUBSTITUTED FOR BARRICADES OR DRUMS AT HALF THE SPACING DURING DAY OPERATIONS. CONES SHALL BE A MINIMUM OF 28 IN HEIGHT.

STEADY BURNING LIGHTS WILL NOT BE REQUIRED ON BARRICADES OR DRUMS FOR DAY OPERATIONS. ALL LIGHTS WILL BE MONODIRECTIONAL.

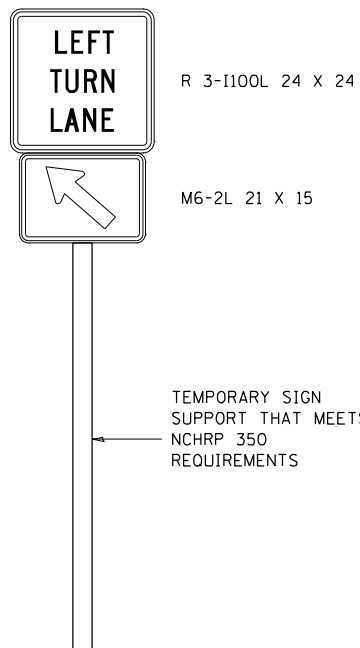
TEMPORARY PAVEMENT MARKING SHALL BE PLACED THROUGHOUT THE BARRICADED AREA OF EACH BAY WHERE THE CLOSURE TIME IS GREATER THAN FOURTEEN DAYS.

THIS APPLICATION ALSO APPLIES WHEN WORK IS BEING PERFORMED IN THE RIGHT LANE(S) AND THE RIGHT TURN BAY IS TO REMAIN OPEN. UNDER THIS CONDITION, "RIGHT TURN LANE" R3-100 24 X 24 AND M6-2R 21 X 15 SHALL BE USED.

THESE CONTROLS SHALL SUPPLEMENT MAINLINE TRAFFIC CONTROL FOR LANE CLOSURES. LONGITUDINAL DIMENSIONS MAY BE ADJUSTED TO FIT FIELD CONDITIONS.

TRAFFIC CONTROL AND PROTECTION AT TURN BAYS (TO REMAIN OPEN TO TRAFFIC) SHALL BE INCLUDED IN THE COST SPECIFIED TRAFFIC CONTROL STANDARDS OR ITEMS.

ALL DIMENSIONS ARE IN INCHES UNLESS OTHERWISE NOTED.



|                |                                       |   |                               |                          |              |           |
|----------------|---------------------------------------|---|-------------------------------|--------------------------|--------------|-----------|
| REVISED - ____ | <b>REGION 2 / DISTRICT 2 STANDARD</b> | F.A. RTE.                                       | SECTION                       | COUNTY                   | TOTAL SHEETS | SHEET NO. |
| REVISED - ____ |                                       | VAR.  | D2 BDS 2023-03                | VARIOUS                  | 17           | 17        |
| REVISED - ____ |                                       | CONTRACT NO. 64S19                              |                               |                          |              |           |
| REVISED - ____ |                                       | FED. ROAD DIST. NO. [ILLINOIS] FED. AID PROJECT |                               |                          |              |           |
| REVISED - ____ |                                       | SCALE: 100,000 : 1                              | SHEET NO. ____ OF ____ SHEETS | STA. _____ TO STA. _____ |              |           |