

MUN. RTE.	SECTION	COUNTY	TOTAL SHEETS	SHEET NO.
2955	20-00060-00-RS	COOK	22	1
ILLINOIS		CONTRACT NO. 61J23		

01-20-2023 LETTING ITEM 108

STATE OF ILLINOIS
DEPARTMENT OF TRANSPORTATION

PLANS FOR PROPOSED
FEDERAL AID HIGHWAY

FAU ROUTE 2955 (OAK PARK AVENUE)
107TH STREET TO SOUTHWEST HWY
RESURFACING

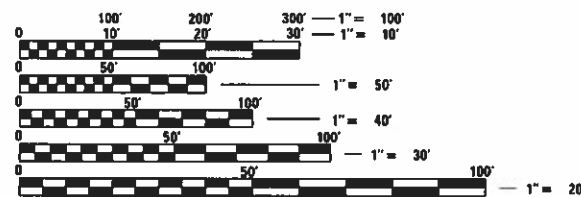
SECTION NO. 20-00060-00-RS
PROJECT NO. QLYX(575)
VILLAGE OF CHICAGO RIDGE
COOK COUNTY
JOB NO. C-91-236-22

FOR INDEX OF SHEETS, SEE SHEET NO. 2
FOR LISTING OF HIGHWAY STANDARDS, SEE SHEET NO. 2

OAK PARK AVENUE
FUNCTIONAL CLASSIFICATION
MINOR COLLECTOR

POSTED SPEED
20 M.P.H.

TRAFFIC DATA
ADT (YEAR) = 1000 (2018)



FULL SIZE PLANS HAVE BEEN PREPARED USING STANDARD
ENGINEERING SCALES. REDUCED SIZED PLANS WILL NOT
CONFORM TO STANDARD SCALES. IN MAKING MEASUREMENTS
ON REDUCED PLANS, THE ABOVE SCALES MAY BE USED.

J.U.L.I.E.
JOINT UTILITY LOCATION INFORMATION FOR EXCAVATION
1-800-892-0123
OR 811



WORTH TOWNSHIP LOCATION MAP
NOT TO SCALE

GROSS & NET LENGTH = 2005.4 FT. = 0.38 MILE



LOCATION OF SECTION INDICATED THUS: -

STATE OF ILLINOIS DEPARTMENT OF TRANSPORTATION	
APPROVED	September 29, 2022 Charles E. [Signature] VILLAGE PRESIDENT, VILLAGE OF CHICAGO RIDGE
PASSED	NOV 7, 2022 [Signature] LOCAL ROADS ENG
RELEASED FOR BID BASED ON LIMITED REVIEW	NOVEMBER 7, 2022 [Signature] REGIONAL ENGINEER
PRINTED BY THE AUTHORITY OF THE STATE OF ILLINOIS	

FEDERAL AID PROGRAM ENGINEER: CARMEN E. RAMOS, P.E. (847) 705-4021 SCHAUMBURG, IL

CHRISTOPHER B. BURKE ENGINEERING, LTD.
9575 W. Higgins Road, Suite 600
Rosemont, Illinois 60018
(847) 823-0500

PROFESSIONAL DESIGN FIRM NO. 184-00175
EXPIRATION DATE: APRIL 30, 2023

CONTRACT NO. 61J23



Brian Libunao
ENGINEER
ILLINOIS REGISTRATION No. 062-071040
EXPIRATION DATE: 11/30/23

INDEX OF SHEETS

<u>DESCRIPTION</u>	<u>SHEET NO.</u>
TITLE SHEET	1
INDEX OF SHEETS, HIGHWAY STANDARDS, D1 STANDARDS, & COMMITMENTS	2
GENERAL NOTES	3
SUMMARY OF QUANTITIES	4-7
TYPICAL SECTIONS	8
ALIGNMENT, TIES AND BENCHMARKS	9-10
PROPOSED PLAN	11-12
CONSTRUCTION DETAILS	13
DETAILS FOR FRAMES AND LIDS ADJUSTMENT WITH MILLING (BD-8)	14
PAVEMENT PATCHING FOR HMA SURFACED PAVEMENT (BD-22)	15
CURB OR CURB AND GUTTER REMOVAL AND REPLACEMENT (BD-24)	16
BUTT JOINT AND HMA TAPER DETAILS (BD-32)	17
TRAFFIC CONTROL AND PROTECTION FOR SIDE ROADS, INTERSECTIONS, AND DRIVEWAYS (TC-10)	18
DISTRICT ONE TYPICAL PAVEMENT MARKINGS (TC-13)	19
ARTERIAL ROAD INFORMATION SIGN (TC-22)	20
DISTRICT 1 – DETECTOR LOOP INSTALLATION DETAILS FOR ROADWAY RESURFACING (TS-07)	21
EXISTING TRAFFIC SIGNAL PLAN (FOR REFERENCE ONLY)	22

HIGHWAY STANDARDS

- 000001-08 - STANDARD SYMBOLS, ABBREVIATIONS, AND PATTERNS
- 424001-11 - PERPENDICULAR CURB RAMPS FOR SIDEWALKS
- 442201-03 - CLASS C AND D PATCHES
- 604001-05 - FRAMES AND LIDS TYPE 1
- 606001-08 - CONCRETE CURB TYPE B AND COMBINATION CONCRETE CURB AND GUTTER
- 701006-05 – OFF RD OPERATIONS, 2L, 2W, 15’ (4.5 M) TO 24” (600 mm) FROM PAVEMENT EDGE
- 701301-04 - LANE CLOSURE, 2L, 2W, SHORT TIME OPERATIONS
- 701311-03 – LANE CLOSURE 2L, 2W MOVING OPERATIONS-DAY ONLY
- 701501-06 - URBAN LANE CLOSURE, 2L, 2W, UNDIVIDED
- 701701-10 - URBAN LANE CLOSURE, MULTILANE INTERSECTION
- 701801-06 - SIDEWALK, CORNER OR CROSSWALK CLOSURE
- 701901-08 - TRAFFIC CONTROL DEVICES
- 780001-05 – TYPICAL PAVEMENT MARKINGS

DISTRICT 1 STANDARD DETAILS

- BD-8 – DETAILS FOR FRAMES AND LIDS ADJUSTMENT WITH MILLING
- BD-22 – PAVEMENT PATCHING FOR HMA SURFACED PAVEMENT
- BD-24 – CURB OR CURB AND GUTTER REMOVAL AND REPLACEMENT
- BD-32 – BUTT JOINT AND HMA TAPER DETAILS
- TC-10 – TRAFFIC CONTROL AND PROTECTION FOR SIDE ROADS, INTERSECTIONS, AND DRIVEWAYS
- TC-13 – DISTRICT ONE TYPICAL PAVEMENT MARKINGS
- TC-22 – ARTERIAL ROAD INFORMATION SIGN
- TS-07 – DISTRICT 1 – DETECTOR LOOP INSTALLATION DETAILS FOR ROADWAY RESURFACING

COMMITMENTS

NONE

GENERAL NOTES

SPECIFICATIONS, STANDARDS AND SPECIAL PROVISIONS

1. ALL CONSTRUCTION SHALL BE DONE IN ACCORDANCE WITH THE "STANDARD SPECIFICATIONS FOR ROAD AND BRIDGE CONSTRUCTION", ADOPTED JANUARY 1, 2022; THE "SUPPLEMENTAL SPECIFICATIONS AND RECURRING SPECIAL PROVISIONS", ADOPTED JANUARY 1, 2023; REVISION 3, NOVEMBER 2021 OF THE "ILLINOIS MANUAL ON UNIFORM TRAFFIC CONTROL DEVICES FOR STREETS AND HIGHWAYS" (IMUTCD) AND "THE STANDARD SPECIFICATIONS FOR WATER AND SEWER MAIN CONSTRUCTION IN ILLINOIS" EIGHTH EDITION; THE "DETAILS" IN THE PLANS; AND THE "SPECIAL PROVISIONS" INCLUDED IN THE CONTRACT DOCUMENTS.
2. ANY REFERENCE TO STANDARDS THROUGHOUT THE PLANS OR SPECIAL PROVISIONS SHALL BE INTERPRETED AS THE LATEST IDOT STANDARD.
3. ALL TRAFFIC CONTROL AND OTHER ADVISORY SIGNS NEEDED FOR CONSTRUCTION ARE TO BE FURNISHED BY THE CONTRACTOR IN ACCORDANCE WITH SECTION 700 OF THE STANDARD SPECIFICATIONS.

UTILITIES

4. THE CONTRACTOR SHALL BE RESPONSIBLE FOR CONTACTING THE OWNERS OF ALL EXISTING FACILITIES SO THAT THE UTILITIES AND THEIR APPURTENANCES MAY BE LOCATED AND ADJUSTED OR MOVED, IF NECESSARY, PRIOR TO THE START OF CONSTRUCTION OPERATIONS. THE CONTRACTOR SHALL COOPERATE WITH ALL UTILITY OWNERS AS PROVIDED FOR IN THE STANDARD SPECIFICATIONS.
5. THE LOCATIONS OF EXISTING DRAINAGE STRUCTURES, STORM AND SANITARY SEWERS, WATER SERVICE LINES AND OTHER UTILITY LINES ARE APPROXIMATE, AND THE VILLAGE AND ENGINEER DO NOT GUARANTEE THEIR ACCURACY. THEIR EXACT HORIZONTAL AND VERTICAL LOCATIONS ARE TO BE DETERMINED IN THE FIELD BY THE CONTRACTOR.
6. THE CONTRACTOR SHALL BE RESPONSIBLE FOR THE PROTECTION OF ALL UNDERGROUND OR SURFACE UTILITIES EVEN THOUGH THEY MAY NOT BE SHOWN ON THE PLANS. ANY UTILITY THAT IS DAMAGED DURING CONSTRUCTION SHALL BE REPAIRED OR REPLACED TO THE SATISFACTION OF THE ENGINEER.
7. BEFORE STARTING ANY EXCAVATION, THE CONTRACTOR SHALL CALL "JULIE" AT 8-1-1 FOR FIELD LOCATIONS OF BURIED ELECTRIC, TELEPHONE, GAS AND CABLE TELEVISION FACILITIES (48 HOURS NOTIFICATIONS IS REQUIRED).
8. THE CONTRACTOR SHALL CONTACT IDOT'S BUREAU OF MATERIALS (PHONE 847-705-4337) AT LEAST 24 HOURS BEFORE PLACING HOT MIX ASPHALT OR PORTLAND CEMENT CONCRETE.

WATER, STORM SEWER AND SANITARY SEWER

9. THE CONTRACTOR SHALL NOT OPEN OR SHUT ANY WATER VALVES OR FIRE HYDRANTS. CONTACT THE VILLAGE OF CHICAGO RIDGE PUBLIC WORKS DEPARTMENT (TEL. NO. 708-857-4457) FOR THEM TO TURN VALVES OR OPERATE HYDRANTS. UNAUTHORIZED USE SHALL SUBJECT THE OFFENDER TO ARREST AND PROSECUTION.
10. WHENEVER DURING CONSTRUCTION OPERATIONS ANY LOOSE MATERIAL IS DEPOSITED IN THE FLOW LINE OF DRAINAGE STRUCTURES SUCH THAT THE NATURAL FLOW OF WATER IS OBSTRUCTED, IT SHALL BE REMOVED AT THE CLOSE OF EACH WORKING DAY. AT THE CONCLUSION OF CONSTRUCTION OPERATIONS, ALL UTILITY STRUCTURES SHALL BE FREE FROM DIRT AND DEBRIS. THE WORK SPECIFIED ABOVE SHALL BE COMPLETED PER ARTICLE 107.15 OF THE STANDARD SPECIFICATIONS.

11. ALL EXISTING OR PROPOSED STORM SEWER DAMAGED BY THE CONTRACTOR DURING CONSTRUCTION SHALL BE REPLACED BY THE CONTRACTOR.
12. WHEN EXISTING DRAINAGE FACILITIES ARE DISTURBED, THE CONTRACTOR SHALL PROVIDE AND MAINTAIN TEMPORARY OUTLETS AND CONNECTIONS FOR ALL PRIVATE OR PUBLIC DRAINS, SEWERS OR CATCH BASINS. HE/SHE SHALL PROVIDE FACILITIES TO TAKE IN ALL STORM WATER WHICH WILL BE RECEIVED BY THESE DRAINS AND SEWERS AND DISCHARGE THE SAME. HE/SHE SHALL PROVIDE AND MAINTAIN AN EFFICIENT PUMPING PLAN, IF NECESSARY, AND A TEMPORARY OUTLET AND BE PREPARED AT ALL TIMES TO DISPOSE OF THE WATER RECEIVED FROM THESE TEMPORARY CONNECTIONS UNTIL SUCH TIME AS THE PERMANENT CONNECTIONS WITH SEWERS ARE BUILT AND IN SERVICE.
13. THE CONTRACTOR SHALL CONFIRM ALL EXISTING STORM SEWER PIPE SIZES AND INVERTS PRIOR TO ORDERING STRUCTURES. ANY MODIFICATIONS OF STRUCTURES DUE TO THE FAILURE OF THE CONTRACTOR TO PERFORM THIS TASK MAY LED TO THE REJECTION OF THE STRUCTURE IN THE FIELD.
14. STRUCTURE ADJUSTMENTS: PRECAST CONCRETE ADJUSTMENT RINGS ARE NOT TO EXCEED 12 INCHES IN OVERALL HEIGHT AND SHALL BE USED IF AN ADJUSTMENT TO THE FINISHED GRADE ESTABLISHED BY THE ENGINEER IS NECESSARY. MAXIMUM TWO RINGS.

MISCELLANEOUS

15. ACCESS: THE CONTRACTOR SHALL PROVIDE ACCESS TO ABUTTING PROPERTY AT ALL TIMES DURING THE CONSTRUCTION OF THIS PROJECT, EXCEPT FOR PERIODS OF SHORT DURATION.
16. DIMENSIONS: THE CONTRACTOR SHALL VERIFY ALL DIMENSIONS AND CONDITIONS EXISTING IN THE FIELD PRIOR TO ORDERING MATERIALS AND BEGINNING CONSTRUCTION.
17. LIMITS OF PATCHING, CURB AND GUTTER REMOVAL AND REPLACEMENT, SIDEWALK REMOVAL AND REPLACEMENT, DRIVEWAY REMOVAL AND REPLACEMENT, AND STRUCTURES TO BE ADJUSTED WILL BE DETERMINED BY THE ENGINEER IN THE FIELD.
18. THE THICKNESSES OF HOT-MIX ASPHALT MIXTURES SHOWN IN THE PLANS ARE NOMINAL. DEVIATIONS MAY OCCUR DUE TO IRREGULARITIES IN THE SURFACES OR BASES ON WHICH THEY ARE TO BE PLACED.
19. DETECTABLE WARNINGS FOR THE HANDICAPPED SHALL BE INSTALLED AT ALL INTERSECTING STREETS, DRIVEWAYS, AND ALLEYS AS SHOWN ON THE PLANS.
20. DEPRESSED CURB: RAMPS AND DEPRESSED CURBS ACCESSIBLE TO THE HANDICAPPED SHALL BE PROVIDED AT CROSSWALK LOCATIONS SHOWN ON THE PLANS.
21. ALL UNDERGROUND, DRIVEWAY, CONCRETE, AND LANDSCAPE RESTORATION WORK IS TO BE COMPLETED BEFORE THE SURFACE COURSE CAN BE INSTALLED.
22. FOR HOT-MIX ASPHALT SURFACE REMOVAL, THE EXISTING ASPHALT SURFACE SHALL BE REMOVED TO THE DEPTH SPECIFIED. THE GRINDINGS SHALL BE REMOVED FROM THE SITE AND THE SURFACE MECHANICALLY BROOMED UNTIL THE SURFACE IS COMPLETELY FREE OF ANY LOOSE MATERIAL AND DEBRIS.

23. NO CONSTRUCTION SHALL BEGIN UNTIL ALL PROPER TEMPORARY SIGNS AND BARRICADES HAVE BEEN INSTALLED.
24. ANY ADDITIONAL COST FOR TESTING REQUIRED TO SECURE APPROVAL OF DISPOSAL OF CLEAN CONSTRUCTION AND DEMOLITION DEBRIS (CCDD) AT A CCDD FILL OPERATION IS THE CONTRACTOR'S RESPONSIBILITY. THE CONTRACTOR SHALL OBTAIN ALL NECESSARY FIELD AND LABORATORY ANALYSIS TO OBTAIN THE LICENSED PROFESSIONAL ENGINEER'S CERTIFICATION REQUIRED AS PER PUBLIC ACT 96-1416 TO USE THE SITE.
25. THE CONTRACTOR SHALL BE SOLELY RESPONSIBLE FOR JOB SITE SAFETY AS WELL AS SUPERVISION/DIRECTION AND MEANS/METHODS OF CONSTRUCTION.
26. SOIL EROSION PROTECTION SHALL BE IN ACCORDANCE WITH IEPA STANDARDS AND SPECIFICATIONS FOR SOIL EROSION AND SEDIMENT CONTROL. ALL DISTURBED AREAS (NOT IMPERVIOUS IN NATURE) SHALL BE FINE GRADED, TOP SOIL RESTORED (MIN 4 INCHES) AND SOD APPLIED UNLESS OTHERWISE SPECIFIED ON THE PLANS.
27. ANY DEFACED WORK SHALL BE CORRECTED OR REPLACED BY THE CONTRACTOR. THE VILLAGE WILL COOPERATE WITH THE CONTRACTOR TO MINIMIZE VANDALISM, BUT THE CONTRACTOR SHALL BE ULTIMATELY RESPONSIBLE TO CORRECT ANY DAMAGE PER CONDITIONS OF ARTICLE 107.30 OF THE STANDARD SPECIFICATIONS.
28. THE CONTRACTOR SHALL KEEP ONE LANE IN EACH DIRECTION OPEN TO TRAFFIC AT ALL TIMES DURING CONSTRUCTION. THE CONTRACTOR SHALL COMPLETE ALL MILLING OPERATIONS BEFORE INSTALLING ANY HOT-MIX ASPHALT PAVEMENT.
29. THE CONTRACTOR MUST PROVIDE AND MAINTAIN SUFFICIENT WASHROOMS FOR THE PROJECT.
30. ADVANCE WARNING SIGNS NEED TO BE ERECTED AT LEAST 7 DAYS PRIOR TO START OF CONSTRUCTION.
31. PRIOR TO INSTALLING SURFACE COURSE AND AT THE ENGINEER'S DISCRETION, THE CONTRACTOR SHALL SAWCUT THE EXISTING PAVEMENT TO PROVIDE A NEW BUTT JOINT TO PAVE AGAINST.
32. CONTRACTOR SHALL TAKE PRECAUTION BY PRESERVING EXISTING TREES WITHIN THE RIGHT OF WAY. IF ANY DAMAGE OCCURS, TREE SHALL BE REPLACED IN KIND PER ARTILCE 201.07 REPAIR OR REPLACEMENT OF EXISTING PLANT MATERIAL REQUIREMENTS STATED HEREIN.

FILE NAME =	USER NAME = blibunoo	DESIGNED - BRL	REVISED -	STATE OF ILLINOIS DEPARTMENT OF TRANSPORTATION	OAK PARK AVENUE RESURFACING GENERAL NOTES	F.A.U. RTE.	SECTION	COUNTY	TOTAL SHEETS	SHEET NO.	
N:\CHICAGO RIDGE\9061T\122\Civ11\NOT_T0122_01.sht		DRAWN - BRL	REVISED -			2955	20-00060-00-R5	COOK	22	3	
Default	PLOT SCALE = 48'	CHECKED - AMP	REVISED -			CONTRACT NO. 61J23					
	PLOT DATE = 11/17/2022	DATE -	REVISED -			SCALE: N.T.S.	SHEET 3	OF 22 SHEETS	STA.	TO STA.	ILLINOIS FED. AID PROJECT

SUMMARY OF QUANTITIES

FUNDING SOURCE					STP	
					80% FED. 20% LOCAL	
CONSTRUCTION TYPE CODE					0005	0042
	CODE NO.	ITEM	UNIT	TOTAL QUANTITY	ROADWAY	TRAINEES
	20101100	TREE TRUNK PROTECTION	EACH	10	10	
~	20101200	TREE ROOT PRUNING	EACH	5	5	
~	20101300	TREE PRUNING (1 TO 10 INCH DIAMETER)	EACH	5	5	
~	20101350	TREE PRUNING (OVER 10 INCH DIAMETER)	EACH	5	5	
	20201200	REMOVAL AND DISPOSAL OF UNSUITABLE MATERIAL	CU YD	100	100	
	20800150	TRENCH BACKFILL	CU YD	65	65	
	21001000	GEOTECHNICAL FABRIC FOR GROUND STABILIZATION	SQ YD	495	495	
	21101615	TOPSOIL FURNISH AND PLACE, 4"	SQ YD	700	700	
	21301060	EXPLORATION TRENCH 60" DEPTH	FOOT	20	20	
	25200110	SODDING, SALT TOLERANT	SQ YD	700	700	
*	25200200	SUPPLEMENTAL WATERING	UNIT	20	20	
	28000250	TEMPORARY EROSION CONTROL SEEDING	POUND	14	14	
	28000400	PERIMETER EROSION BARRIER (TEMPORARY)	FOOT	185	185	
	28001100	TEMPORARY EROSION CONTROL BLANKET	SQ YD	30	30	
	28000510	INLET FILTERS	EACH	36	36	
*	30300001	AGGREGATE SUBGRADE IMPROVEMENT	CU YD	100	100	
	35800100	PREPARATION OF BASE	SQ YD	1200	1200	
	35800200	AGGREGATE BASE REPAIR	TON	50	50	

SUMMARY OF QUANTITIES

FUNDING SOURCE					STP	
					80% FED. 20% LOCAL	
CONSTRUCTION TYPE CODE					0005	0042
CODE NO.	ITEM	UNIT	TOTAL QUANTITY	ROADWAY	TRAINEES	
40600290	BITUMINOUS MATERIALS (TACK COAT)	POUND	5635	5635		
40600982	HOT-MIX ASPHALT SURFACE REMOVAL - BUTT JOINT	SQ YD	100	100		
40603080	HOT-MIX ASPHALT BINDER COURSE, IL-19.0, N50	TON	1755	1755		
40604060	HOT-MIX ASPHALT SURFACE COURSE, IL-9.5, MIX "D", N50	TON	705	705		
* 42400200	PORTLAND CEMENT CONCRETE SIDEWALK 5 INCH	SQ FT	1820	1820		
* 42400800	DETECTABLE WARNINGS	SQ FT	90	90		
* 44000169	HOT-MIX ASPHALT SURFACE REMOVAL, 5"	SQ YD	7950	7950		
44000600	SIDEWALK REMOVAL	SQ FT	1820	1820		
44201690	CLASS D PATCHES, TYPE I, 4 INCH	SQ YD	110	110		
44201692	CLASS D PATCHES, TYPE II, 4 INCH	SQ YD	110	110		
44201694	CLASS D PATCHES, TYPE III, 4 INCH	SQ YD	110	110		
44201696	CLASS D PATCHES, TYPE IV, 4 INCH	SQ YD	165	165		
50102400	CONCRETE REMOVAL	CU YD	7	7		
50105220	PIPE CULVERT REMOVAL	FOOT	120	120		
* 542A5485	PIPE CULVERTS, CLASS A, TYPE 1 EQUIVALENT ROUND-SIZE 30"	FOOT	120	120		
60406000	FRAMES AND LIDS, TYPE 1, OPEN LID	EACH	2	2		
60406100	FRAMES AND LIDS, TYPE 1, CLOSED LID	EACH	2	2		
67100100	MOBILIZATION	LSUM	1	1		

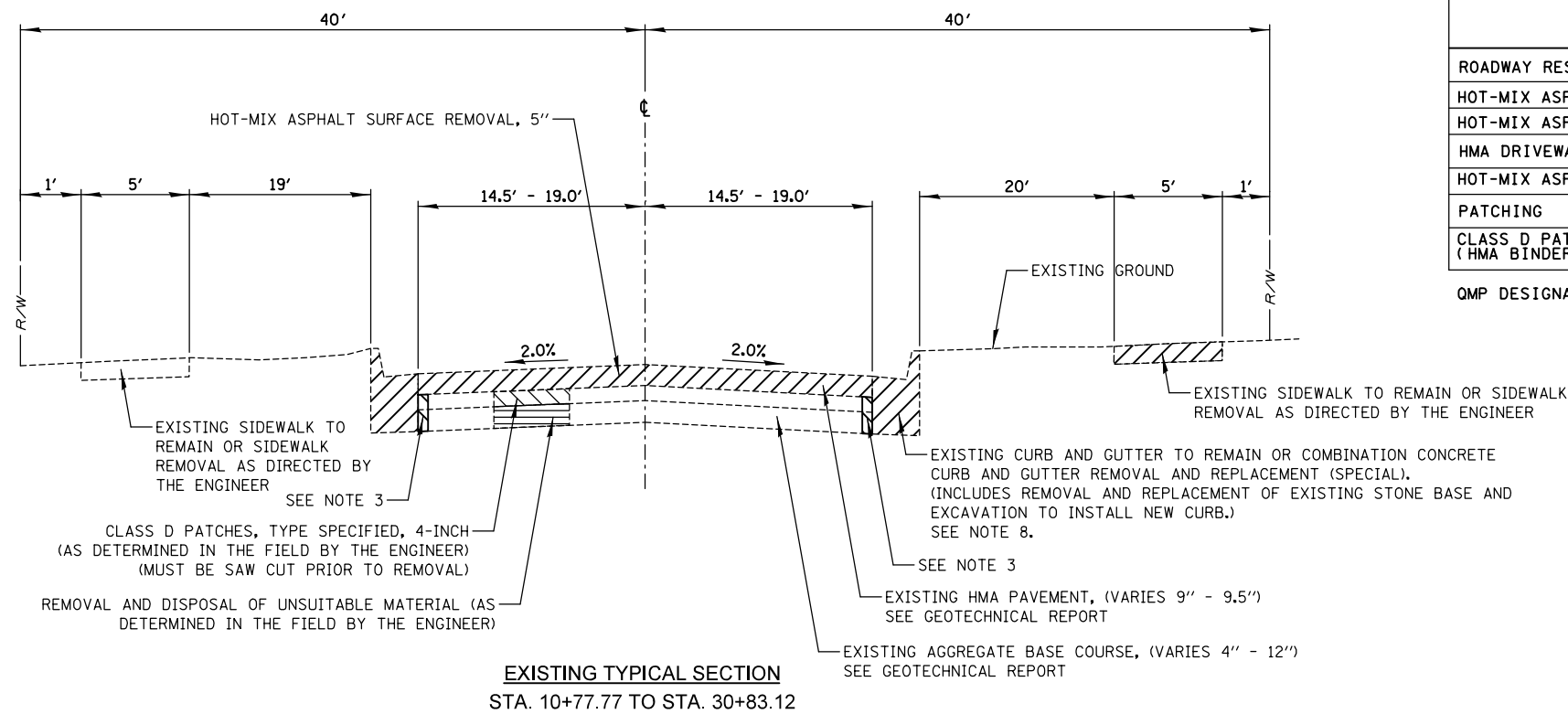
SUMMARY OF QUANTITIES

FUNDING SOURCE					STP	
CONSTRUCTION TYPE CODE					80% FED. 20% LOCAL	
	CODE NO.	ITEM	UNIT	TOTAL QUANTITY	0005 ROADWAY	0042 TRAINEES
*	70102620	TRAFFIC CONTROL AND PROTECTION, STANDARD 701501	LSUM	1	1	
*	70102635	TRAFFIC CONTROL AND PROTECTION, STANDARD 701701	LSUM	1	1	
*	70102640	TRAFFIC CONTROL AND PROTECTION, STANDARD 701801	LSUM	1	1	
~	72000100	SIGN PANEL - TYPE 1	SQ FT	215	215	
~	72900100	METAL POST - TYPE A	FOOT	324	324	
~	78000100	THERMOPLASTIC PAVEMENT MARKING - LETTERS AND SYMBOLS	SQ FT	73	73	
~	78000200	THERMOPLASTIC PAVEMENT MARKING - LINE 4"	FOOT	1080	1080	
~	78000400	THERMOPLASTIC PAVEMENT MARKING - LINE 6"	FOOT	260	260	
~	78000650	THERMOPLASTIC PAVEMENT MARKING - LINE 24"	FOOT	135	135	
~	78005110	EPOXY PAVEMENT MARKING - LINE 4"	FOOT	60	60	
~	78005130	EPOXY PAVEMENT MARKING - LINE 6"	FOOT	110	110	
~	78005180	EPOXY PAVEMENT MARKING - LINE 24"	FOOT	28	28	
~	* 85000400	MAINTENANCE OF EXISTING TRAFFIC SIGNAL INSTALLATION	EACH	1	1	
~	* 88600600	DETECTOR LOOP REPLACEMENT	FOOT	200	200	
	* X4021000	TEMPORARY ACCESS (PRIVATE ENTRANCE)	EACH	49	49	
	* X4022000	TEMPORARY ACCESS (COMMERCIAL ENTRANCE)	EACH	2	2	
	* X4023000	TEMPORARY ACCESS (ROAD)	EACH	6	6	
	* XX003435	PORTLAND CEMENT CONCRETE DRIVEWAY REMOVAL AND REPLACEMENT	SQ YD	150	150	

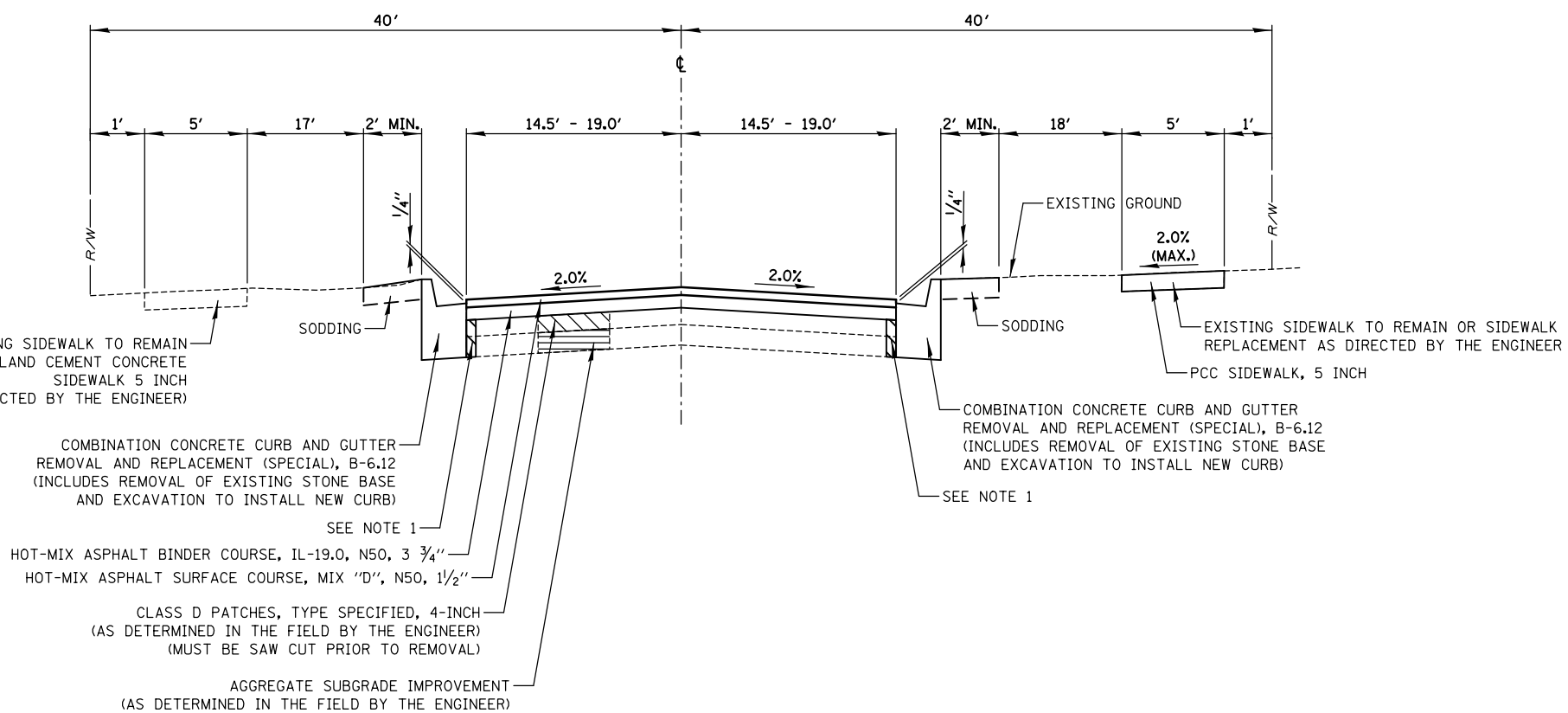
SUMMARY OF QUANTITIES

FUNDING SOURCE					STP	
CONSTRUCTION TYPE CODE					80% FED. 20% LOCAL	
	CODE NO.	ITEM	UNIT	TOTAL QUANTITY	0005 ROADWAY	0042 TRAINEES
*	XX006947	HOT-MIX ASPHALT DRIVEWAY REMOVAL AND REPLACEMENT	SQ YD	365	365	
*	X4400501	COMBINATION CURB AND GUTTER REMOVAL AND REPLACEMENT LESS THAN OR EQUAL TO 10 FEET	FOOT	145	145	
*	X4400503	COMBINATION CURB AND GUTTER REMOVAL AND REPLACEMENT GREATER THAN 10 FEET	FOOT	835	835	
*	Z0013798	CONSTRUCTION LAYOUT	LSUM	1	1	
*	Z0017400	DRAINAGE & UTILITY STRUCTURES TO BE ADJUSTED	EACH	35	35	
*	Z0017500	DRAINAGE & UTILITY STRUCTURE ADJUSTMENT (SPECIAL)	EACH	14	14	
*	Z0030850	TEMPORARY INFORMATION SIGNING	SQ FT	52	52	
*	Z0076600	TRAINEES	HOUR	500		500
*	Z0076604	TRAINEES TRAINING PROGRAM GRADUATE	HOUR	500		500

* INDICATES SPECIAL PROVISION
 ~ INDICATES SPECIALTY ITEM



EXISTING TYPICAL SECTION
STA. 10+77.77 TO STA. 30+83.12



PROPOSED TYPICAL SECTION
STA. 10+77.77 TO STA. 30+83.12

HOT-MIX ASPHALT MIXTURE REQUIREMENTS		
MIXTURE ITEM	AIR VOIDS e Ndes	QMP DESIGNATION
ROADWAY RESURFACING		
HOT-MIX ASPHALT SURFACE COURSE, MIX "D", N50 (IL-9.5), 1 1/2"	4% e 50 GYR	LR 1030-2
HOT-MIX ASPHALT BINDER COURSE, IL-19.0, N50, 3 3/4"	4% e 50 GYR	LR 1030-2
HMA DRIVEWAY REMOVAL AND REPLACEMENT		
HOT-MIX ASPHALT SURFACE COURSE, MIX "D", N50 (IL-9.5), 3" (IN 2 LIFTS)	4% e 50 GYR	LR 1030-2
PATCHING		
CLASS D PATCHES, TYPE (SPECIFIED), 4 INCH (HMA BINDER IL-19 MM)	4% e 70 GYR	LR 1030-2

QMP DESIGNATION: QUALITY CONTROL/QUALITY ASSURANCE (QA/QC) PER LR 1030-2

- NOTES:**
- THE UNIT WEIGHT USED TO CALCULATE ALL HMA SURFACE MIXTURE QUANTITIES IS 112 LBS/SQ YD/IN.
 - THE "AC TYPE" FOR POLYMERIZED HMA MIXES SHALL BE "SBS/SBR PG 76-22" AND FOR NON-POLYMERIZED HMA THE "AC TYPE" SHALL BE "PG 64-22" UNLESS MODIFIED BY RECLAIMED MATERIALS SPECIFICATIONS.

- NOTES:**
- CLASS SI PCC, VIBRATED IN PLACE SHALL BE POURED WITHIN 48 HOURS AND INCLUDED IN THE COST OF COMBINATION CONCRETE CURB AND GUTTER.
 - CONTRACTOR SHALL SAWCUT PAVEMENT PRIOR TO REMOVING THE CURB.
 - PAVEMENT REMOVAL ADJACENT TO PROPOSED CURB AND GUTTER SHALL BE INCLUDED IN THE COST OF THE PROPOSED CURB AND GUTTER.
 - FOR ROADWAYS WITH DIFFERING ELEVATIONS AT THE EDGE OF PAVEMENT, CONTRACTOR SHALL PAVE THE SIDE WITH THE HIGHER ELEVATION FIRST.
 - ENGINEER TO VERIFY MINIMUM 2% CROSS SLOPE PRIOR TO PLACING SURFACE COURSE. ANY CORRECTIONS MUST BE MADE BY THE CONTRACTOR AT HIS OWN EXPENSE.
 - NO ADDITIONAL COMPENSATION SHALL BE CONSIDERED FOR PETROMAT (FABRIC) ENCOUNTERED DURING GRINDING OPERATIONS. REMOVAL AND DISPOSAL OF PETROMAT SHALL BE INCLUDED IN THE COST OF HOT-MIX ASPHALT SURFACE REMOVAL. CONTRACTOR SHALL MILL PRIOR TO PATCHING.
 - LIMITS OF CURB AND GUTTER REMOVAL AND REPLACEMENT TO BE MARKED IN THE FIELD BY THE ENGINEER.

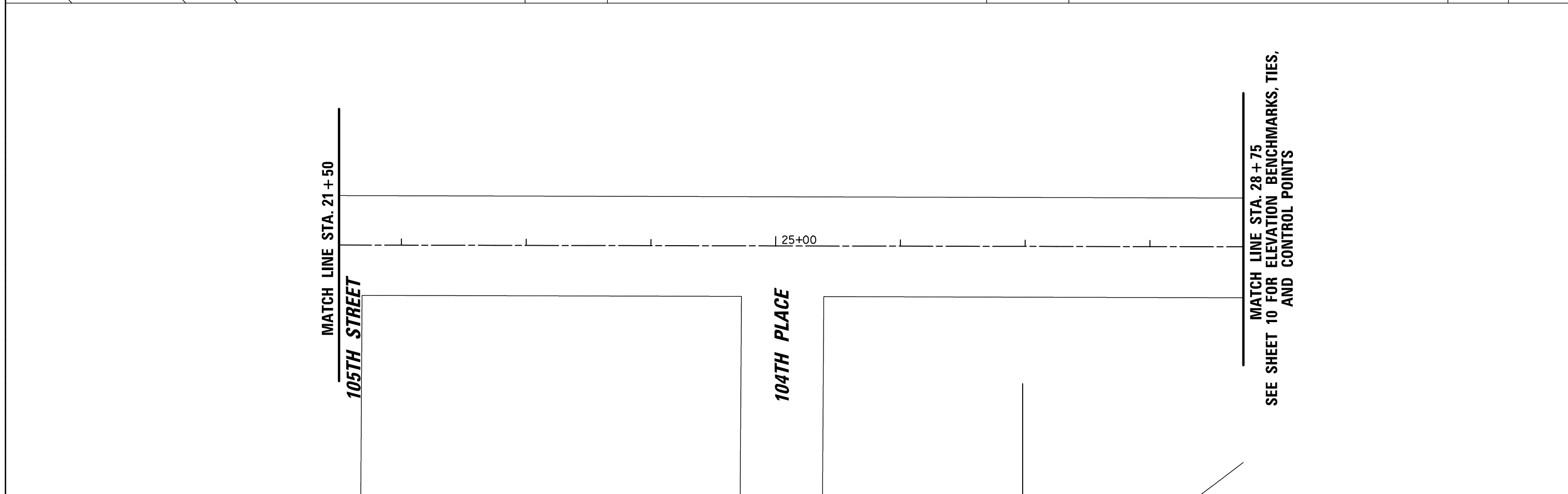
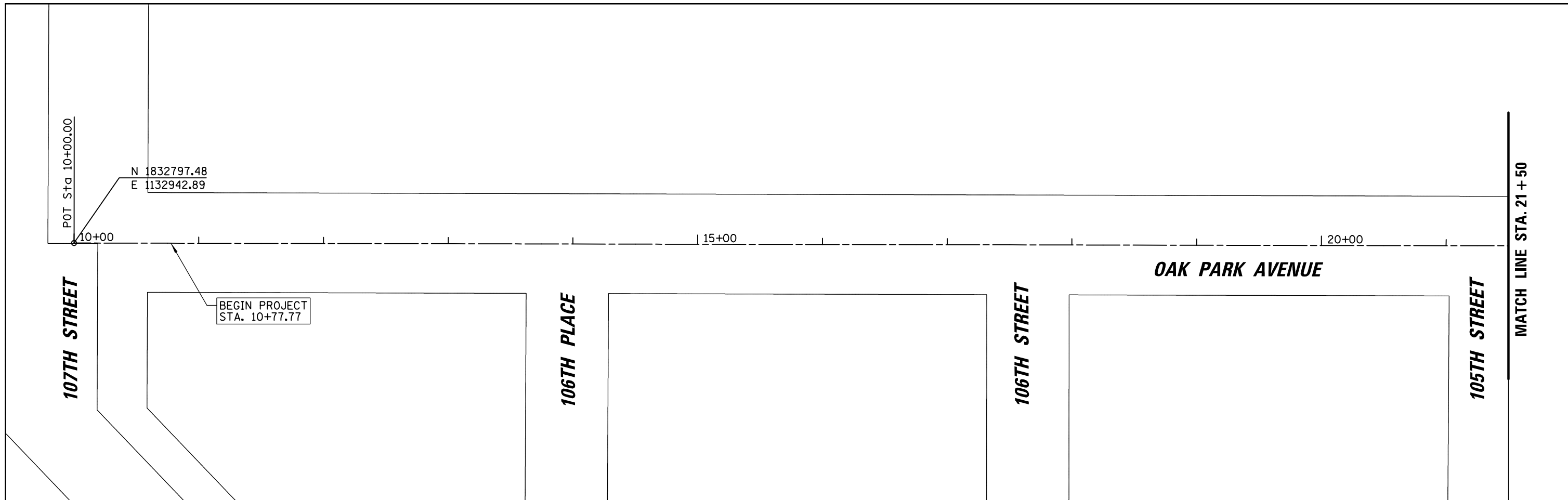
FILE NAME =	USER NAME = blibunoo	DESIGNED - BRL	REVISED -
N:\CHICAGO\RDGE\9061T\122\Civ11\TYP_T0122_01.sht		DRAWN - BRL	REVISED -
Default	PLOT SCALE = 48"	CHECKED - AMP	REVISED -
	PLOT DATE = 11/17/2022	DATE -	REVISED -

STATE OF ILLINOIS
DEPARTMENT OF TRANSPORTATION

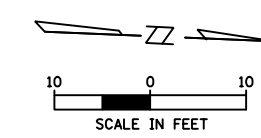
OAK PARK AVENUE RESURFACING
TYPICAL SECTIONS

SCALE: N.T.S. SHEET 8 OF 22 SHEETS STA. TO STA.

F.A.U. RTE.	SECTION	COUNTY	TOTAL SHEETS	SHEET NO.
2955	20-00060-00-R5	COOK	22	8
CONTRACT NO. 61J23				
ILLINOIS FED. AID PROJECT				



FILE NAME = N:\CHICAGO\RIDG\9061T\122\Civ11\BNH.PLOT	USER NAME = blibunoo T0122-01.sht	DESIGNED - BRL	REVISED -	STATE OF ILLINOIS DEPARTMENT OF TRANSPORTATION	OAK PARK AVENUE ALIGNMENT, TIES AND BENCHMARKS	F.A.U. RTE. 2955	SECTION 20-00060-00-R5	COUNTY COOK	TOTAL SHEETS 22	SHEET NO. 9		
Default	PLOT SCALE = 80'	CHECKED - AMP	REVISED -			SCALE: 1:20	SHEET 9 OF 22 SHEETS	STA. 10+77.77	TO STA. 30+82.97	CONTRACT NO. 61J23		
	PLOT DATE = 11/17/2022	DATE -	REVISED -			ILLINOIS FED. AID PROJECT						



MATCH LINE STA. 28 + 75
SEE SHEET 9

OAK PARK AVENUE

SOUTHWEST HIGHWAY

PROP. CURVE P_OAKP1
 PI STA. = 29+62.22
 $\Delta = 34^\circ 20' 32''$ (LT)
 $D = 28^\circ 38' 52''$
 $R = 200.00'$
 $T = 61.80'$
 $L = 119.88'$
 $E = 9.33'$
 P.C. STA = 29+00.42
 P.T. STA = 30+20.30

PC Sta 29+00.42
 29
 $N = 1\ 834\ 696.41$
 $E = 1\ 132\ 867.43$

CP #11
 $N = 1\ 834\ 754.87$
 $E = 1\ 132\ 836.91$
 STA. 29.67.23
 OFFSET 18.12' LT
 CP-XCUT

OSBM 21-51
 ELEV. 594.23

$N = 1\ 834\ 807.76$
 $E = 1\ 132\ 828.12$

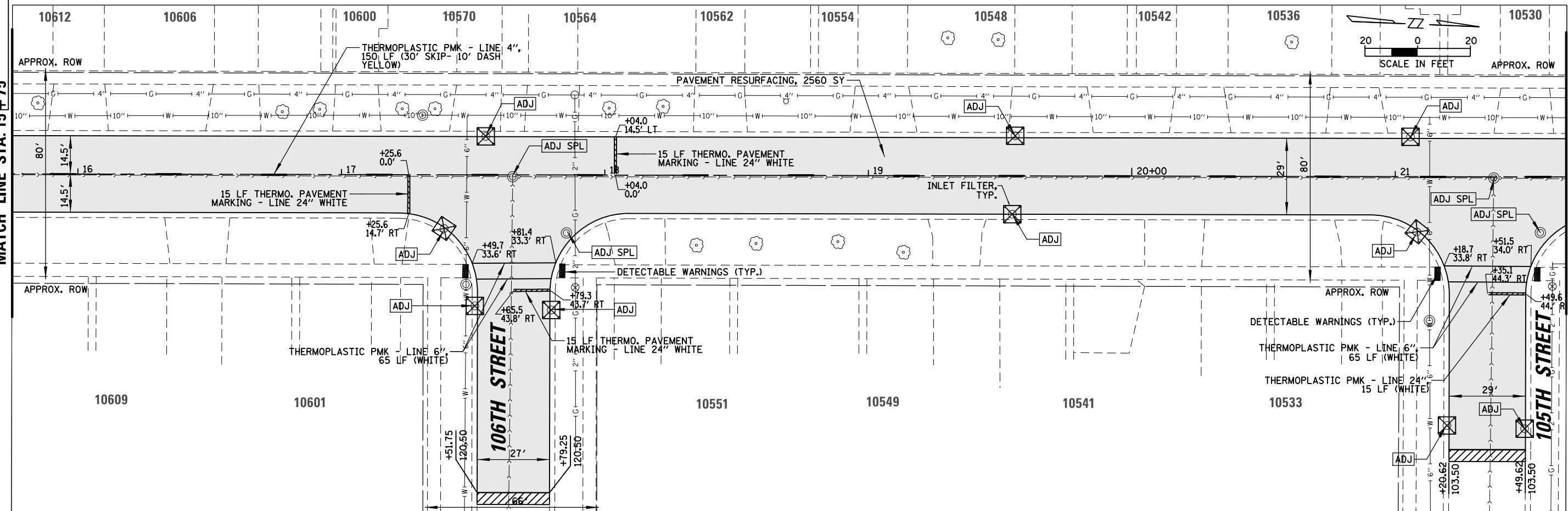
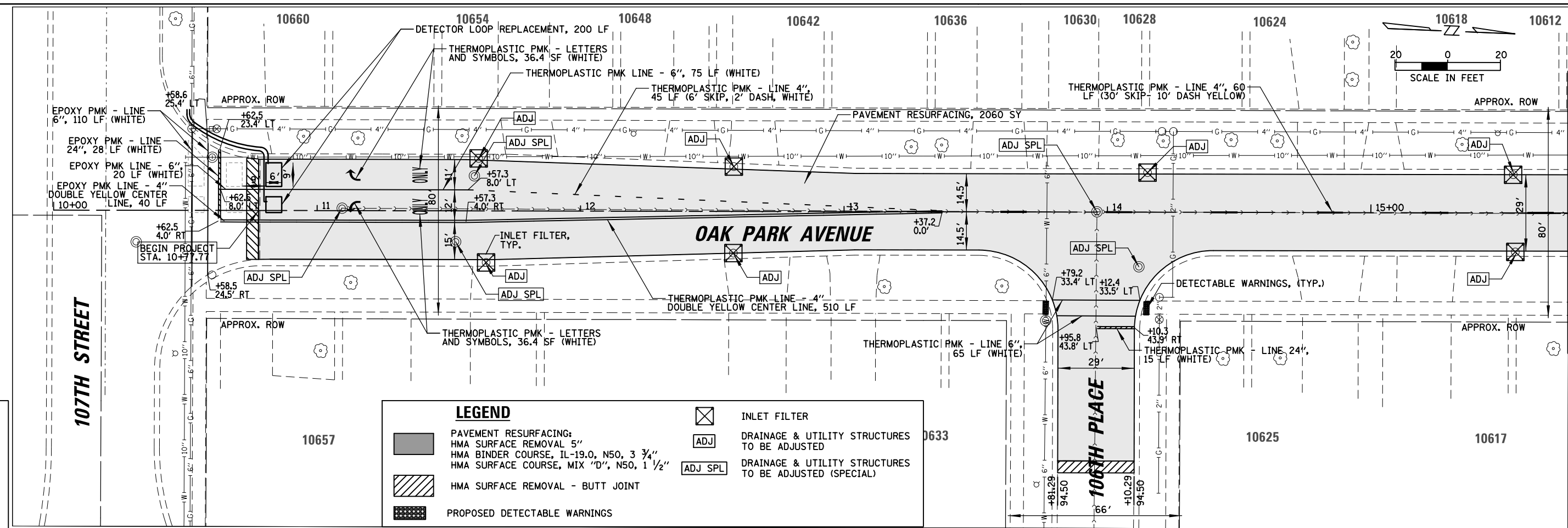
CP #10
 $N = 1\ 834\ 847.79$
 $E = 1\ 132\ 767.95$
 STA. 30+88.3
 OFFSET 24.4' LT
 CP-XCUT

$N = 1\ 834\ 871.73$
 $E = 1\ 132\ 780.58$

END PROJECT
 STA. 30+82.97

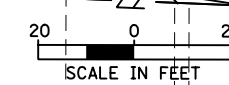
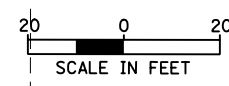
ELEVATION BENCHMARKS DATUM: NAVD'88 (GPS OBSERVED)		
NO.	DESCRIPTION	ELEV.
OSBM 21-51	SQUARE CUT SET ON NORTH SIDE OF CONCRETE FOUNDATION OF STREET LIGHT LOCATED WEST OF SIDE OF OAK PARK AVENUE APPROXIMATE 200' SOUTH OF SOUTH RIGHT-OF-WAY OF SOUTHWEST HIGHWAY APPROXIMATELY 3' WEST OF A PK NAIL IN BIT	594.23

FILE NAME = N:\CHICAGO\RIDG\90611\122\Civ11\BNH.PLOT	USER NAME = blibunoo	DESIGNED - BRL	REVISED -	STATE OF ILLINOIS DEPARTMENT OF TRANSPORTATION	OAK PARK AVENUE ALIGNMENT, TIES AND BENCHMARKS	F.A.U. RTE. 2955	SECTION 20-00060-00-R5	COUNTY COOK	TOTAL SHEETS 22	SHEET NO. 10	
Default	T0122-02.sht	DRAWN - BRL	REVISED -			SCALE: 1:10	SHEET 10	OF 22 SHEETS	STA.	TO STA.	CONTRACT NO. 61J23
	PLOT SCALE = 28"	CHECKED - AMP	REVISED -			ILLINOIS FED. AID PROJECT					
	PLOT DATE = 11/17/2022	DATE -	REVISED -								



LEGEND

- PAVEMENT RESURFACING: HMA SURFACE REMOVAL 5\"/>
- HMA SURFACE REMOVAL - BUTT JOINT
- PROPOSED DETECTABLE WARNINGS
- INLET FILTER
- DRAINAGE & UTILITY STRUCTURES TO BE ADJUSTED
- DRAINAGE & UTILITY STRUCTURES TO BE ADJUSTED (SPECIAL)



FILE NAME =	USER NAME = blibunoo	DESIGNED -	REVISED -	STATE OF ILLINOIS DEPARTMENT OF TRANSPORTATION	OAK PARK AVENUE PROPOSED PLAN	F.A.U. RTE.	SECTION	COUNTY	TOTAL SHEETS	SHEET NO.	
N:\CHICAGO\RDG\90611\122\Civ11\PRO_T0122_01.sht	PLOT SCALE = 48"	DRAWN -	REVISED -			2955	20-00060-00-R5	COOK	22	11	
Default	PLOT DATE = 11/17/2022	CHECKED -	REVISED -			CONTRACT NO. 61J23					
		DATE -	REVISED -			ILLINOIS FED. AID PROJECT					

ATION CONCRETE CURB
TTER, REMOVAL AND
EMENT

NG STORM SEWER REMOVAL

ED STORM SEWER

RIVWAY REMOVAL AND
EMENT

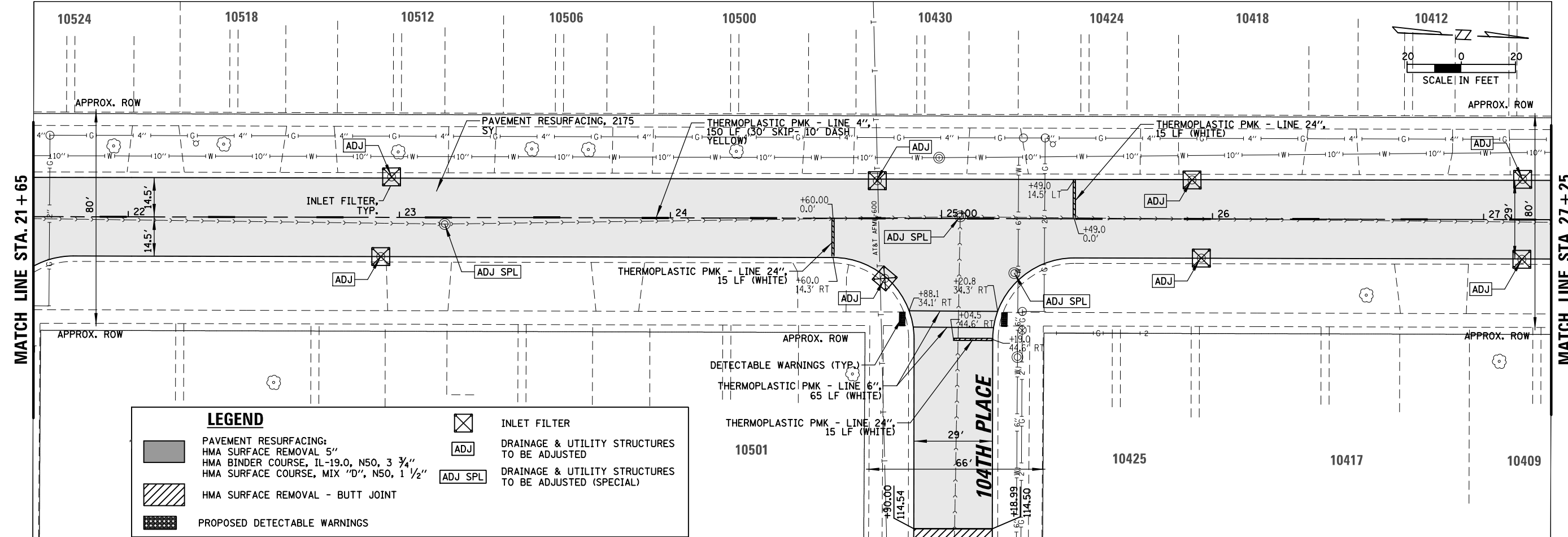
D PATCHES, TYPE
NCH

ILTER

MATCH LINE STA. 15+75

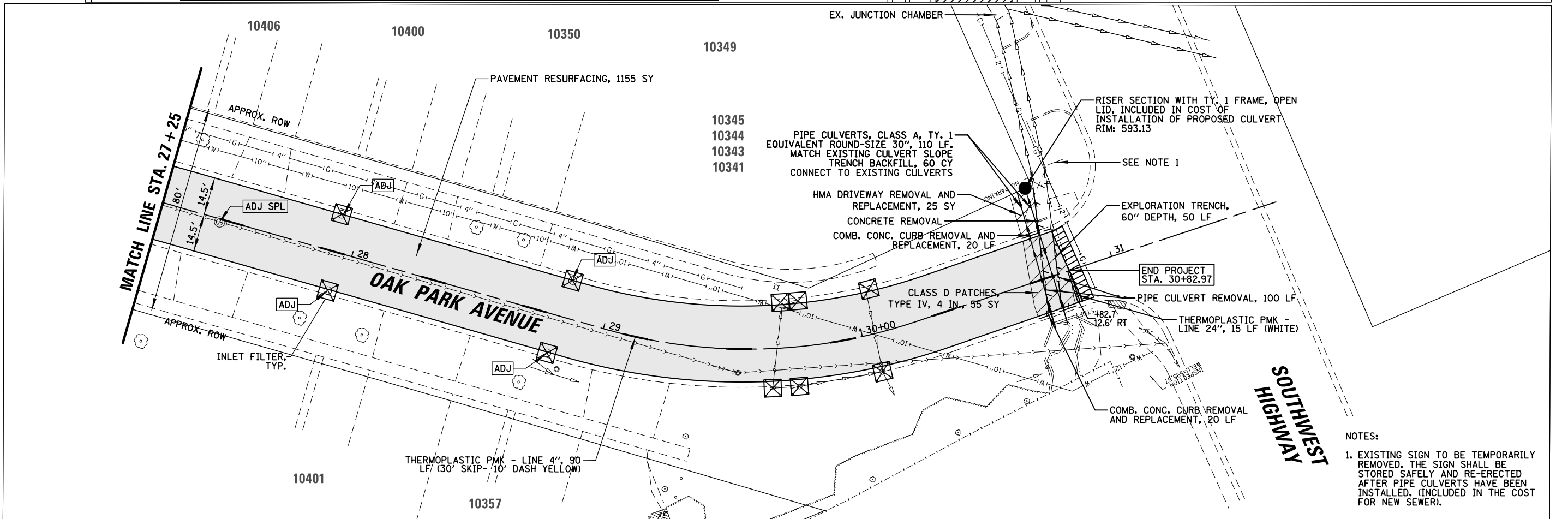
MATCH LINE STA. 21+65

MATCH LINE STA. 15+75



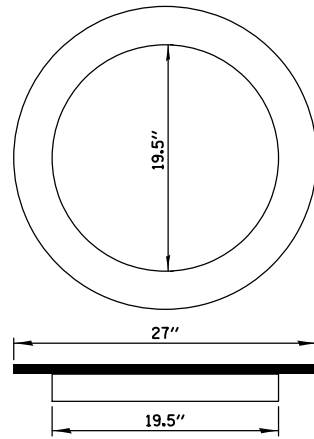
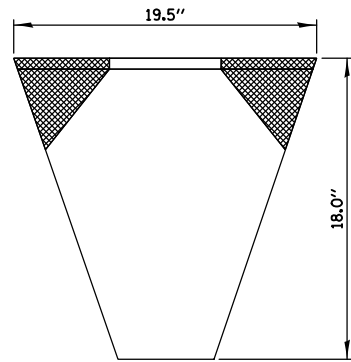
LEGEND

- PAVEMENT RESURFACING: HMA SURFACE REMOVAL 5" HMA BINDER COURSE, IL-19.0, N50, 3 3/4" HMA SURFACE COURSE, MIX "D", N50, 1 1/2"
- HMA SURFACE REMOVAL - BUTT JOINT
- PROPOSED DETECTABLE WARNINGS
- INLET FILTER
- DRAINAGE & UTILITY STRUCTURES TO BE ADJUSTED
- DRAINAGE & UTILITY STRUCTURES TO BE ADJUSTED (SPECIAL)



- NOTES:**
- EXISTING SIGN TO BE TEMPORARILY REMOVED. THE SIGN SHALL BE STORED SAFELY AND RE-ERECTED AFTER PIPE CULVERTS HAVE BEEN INSTALLED. (INCLUDED IN THE COST FOR NEW SEWER).

FILE NAME =	USER NAME = blibunoo	DESIGNED -	REVISED -	STATE OF ILLINOIS DEPARTMENT OF TRANSPORTATION	OAK PARK AVENUE PROPOSED PLAN	F.A.U. RTE.	SECTION	COUNTY	TOTAL SHEETS	SHEET NO.	
N:\CHICAGO\RDGE\90611\122\Civ11\PRO_T0122_02.sht	PLOT SCALE = 48"	DRAWN -	REVISED -			2955	20-00060-00-R5	COOK	22	12	
Default	PLOT DATE = 11/17/2022	CHECKED -	REVISED -			CONTRACT NO. 61J23					
		DATE -	REVISED -			ILLINOIS FED. AID PROJECT					

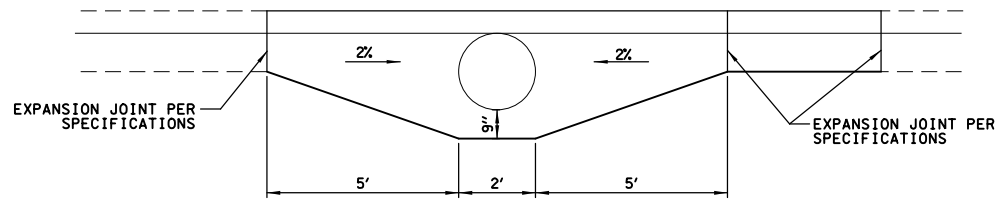


NOTES:

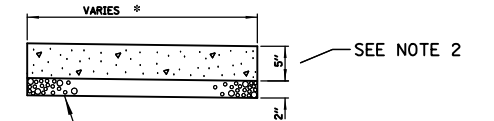
FRAME:
FLANGE SHALL BE FABRICATED FROM 1/8" FLAT STACK.
BASE RING SHALL BE FABRICATED FROM 1/2" x 1/2" x 1/8" CHANNEL.
DOMESTIC STEEL CONFORMING TO ASTM-A36.

SEDIMENT BAG: SHALL BE FABRICATED FROM 4 OZ/SQ YD NON-WAVEN POLYPROPYLENE GEOTEXTILE AND SHALL BE REINFORCED WITH POLYESTER MESH, THE BAG SHALL BE SECURED TO THE BASE RING WITH STAINLESS STEEL STRAP AND LOCK.

CATCH BASIN AND INLET FILTER



CURB AROUND STRUCTURE DETAIL



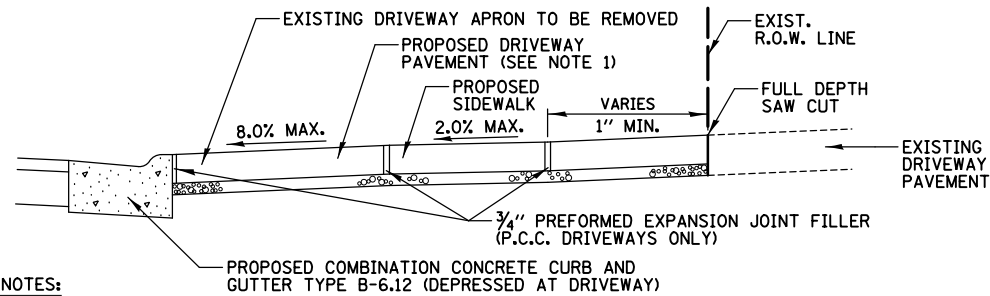
SUBBASE GRANULAR MATERIAL, TYPE B
(INCLUDED IN THE COST OF P.C.C. SIDEWALK)

* CROSS SLOPE 0.5% (MIN.) TO 2% (MAX.)

NOTES:

1. ALL REQUIRED EARTH EXCAVATION TO CONSTRUCT P.C.C. SIDEWALK SHALL BE INCLUDED IN COST OF P.C.C. SIDEWALK 5 INCH.
2. THICKNESS SHALL BE INCREASED TO 7" WHERE SIDEWALK IS ADJACENT TO A DRIVEWAY (NO WIRE MESH). (INCLUDED IN COST OF SIDEWALK).
3. IN LOCATIONS WHERE SIDEWALK IS REMOVED AND REPLACED THROUGH DRIVEWAYS, DRIVEWAYS SHALL BE SAWCUT AND PATCHED A MINIMUM OF 1' ON EITHER SIDE OF THE WALK. THIS WORK SHALL BE PAID FOR PER SQUARE YARD AT THE CONTRACT UNIT PRICE FOR P.C.C. CONCRETE DRIVEWAY REMOVAL AND REPLACEMENT OR HOT-MIX ASPHALT DRIVEWAY REMOVAL AND REPLACEMENT.
4. WHEN FORMS ARE REMOVED FROM THE SIDEWALK, THE SIDEWALK SHALL BE BARRICADED OR BACKFILLED WITHIN 24 HOURS.

P.C.C. SIDEWALK, 5 INCH DETAIL



NOTES:

1. THE PROPOSED DRIVEWAY PAVEMENT SHALL CONSIST OF:
 - A. 7" PORTLAND CEMENT CONCRETE AND 3" OF AGGREGATE BASE COURSE TYPE B IF THE EXISTING DRIVEWAY IS P.C. CONCRETE, OR
 - B. 3" HOT-MIX ASPHALT SURFACE COURSE, MIX "D", N50, AND 6" AGGREGATE BASE COURSE TYPE B IF THE EXISTING DRIVEWAY IS HMA OR AGGREGATE.
2. PREFORMED EXPANSION JOINT FILLER SHALL BE INCLUDED IN THE COST OF P.C.C. DRIVEWAY PAVEMENT.
3. ALL REQUIRED EARTH EXCAVATION AND DRIVEWAY REMOVAL REQUIRED TO CONSTRUCT DRIVES SHALL BE INCLUDED IN THE COST OF DRIVEWAY REMOVAL & REPLACEMENT, OF THE TYPE SPECIFIED.

DRIVEWAY REMOVAL AND REPLACEMENT

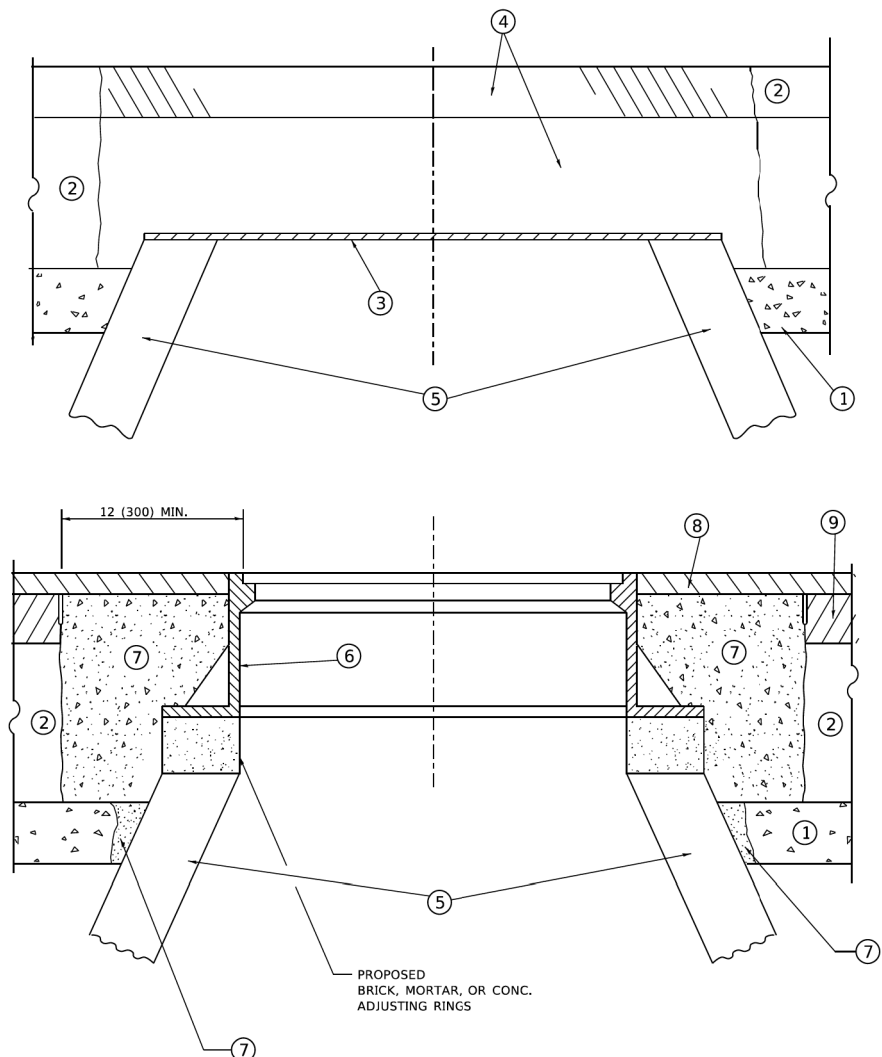
FILE NAME =	USER NAME = blibunoo	DESIGNED - BRL	REVISED -
N:\CHICAGO\RDGE\9061T\122\Civi1\CDET.T012.01.sht		DRAWN - BRL	REVISED -
Default	PLOT SCALE = 48"	CHECKED - AMP	REVISED -
	PLOT DATE = 11/17/2022	DATE -	REVISED -

**STATE OF ILLINOIS
DEPARTMENT OF TRANSPORTATION**

**OAK PARK AVENUE RESURFACING
CONSTRUCTION DETAILS**

SCALE: N.T.S. SHEET 13 OF 22 SHEETS STA. TO STA.

F.A.U. RTE.	SECTION	COUNTY	TOTAL SHEETS	SHEET NO.
2955	20-00060-00-R5	COOK	22	13
CONTRACT NO. 61J23			ILLINOIS FED. AID PROJECT	



DETAILS FOR FRAMES AND LIDS ADJUSTMENT WITH MILLING

NOTES

- EXISTING BROKEN FRAMES AND LIDS SHALL BE REMOVED AND DISPOSED OF BY THE CONTRACTOR AND SHALL BE REPLACED AS DIRECTED BY THE ENGINEER. REPLACEMENT FRAMES AND LIDS WILL BE PAID FOR IN ACCORDANCE WITH ARTICLE 109.04 OF THE STANDARD SPECIFICATIONS UNLESS A SEPARATE PAY ITEM HAS BEEN PROVIDED.
- IF THE EXISTING LIDS ARE OPEN, THE FRAME WILL BE ADJUSTED TO THE ELEVATION OF THE MILLED PAVEMENT SURFACE PRIOR TO THE MILLING OPERATION. THE FRAME WILL NOT BE REMOVED AND COVERED BY THE METAL PLATE.
- CITY OF CHICAGO CASTINGS ARE THE PROPERTY OF THE CITY AND THE CONTRACTOR SHALL NOTIFY THE CITY FOR REMOVAL AND DISPOSITION OF THE CASTINGS.
- THE METAL PLATE USED TO COVER THE STRUCTURE SHALL REMAIN THE PROPERTY OF THE CONTRACTOR.

CONSTRUCTION PROCEDURES

- STAGE 1 (BEFORE PAVEMENT MILLING)**
- REMOVE A MINIMUM OF 12 (300) OF THE PAVEMENT FROM AROUND THE STRUCTURE.
 - REMOVE THE EXISTING FRAME AND LID FROM THE STRUCTURE.
 - COVER THE STRUCTURE OPENING WITH A 36 (900) DIAMETER METAL PLATE.
 - BACKFILL WITH CRUSHED STONE AND HMA SURFACE MIX APPROVED BY THE ENGINEER. (MIN. 1 1/2 (40) HMA TO REMAIN AFTER MILLING).
- STAGE 2 (AFTER PAVEMENT MILLING)**
- REMOVE THE HMA SURFACE MIX AND CRUSHED STONE.
 - INSTALL THE FRAME AND LID; ADJUST THE FRAME TO ITS FINAL SURFACE ELEVATION.
 - THE SURROUNDING SPACE SHALL BE FILLED WITH CLASS*PP-1 CONCRETE TO THE ELEVATION OF THE SURFACE OF THE EXISTING BASE COURSE OR THE BINDER COURSE.
- *UNLESS OTHERWISE SPECIFIED IN THE PLANS.

THE PROCEDURE EXPLAINED ABOVE SHALL CONFORM TO THE APPLICABLE PORTIONS OF SECTIONS 353, 406, 602, AND 603 OF THE STANDARD SPECIFICATIONS EXCEPT THAT "THE CONTRACTOR SHALL ADJUST THE STRUCTURES TO THE FINISHED PAVEMENT ELEVATION NO MORE THAN 5 CALENDAR DAYS PRIOR TO PLACEMENT OF THE FINAL LIFT OF SURFACE UNLESS APPROVED BY THE ENGINEER."

LEGEND

- | | |
|--|-------------------------------|
| ① SUB-BASE GRANULAR MATERIAL | ⑥ FRAME AND LID (SEE NOTES) |
| ② EXISTING PAVEMENT | ⑦ CLASS*PP-1 CONCRETE |
| ③ 36 (900) DIAMETER METAL PLATE | ⑧ PROPOSED HMA SURFACE COURSE |
| ④ PROPOSED CRUSHED STONE AND HMA SURFACE MIX | ⑨ PROPOSED HMA BINDER COURSE |
| ⑤ EXISTING STRUCTURE | |

LOCATION OF STRUCTURES

THE CONTRACTOR WILL BE REQUIRED TO KEEP A RECORD OF THE LOCATIONS OF THE BURIED STRUCTURES ACCORDING TO THE STATION AND DISTANCE LEFT OR RIGHT OF THE CENTERLINE OF PAVEMENT. UPON COMPLETION OF THE WORK, THE CONTRACTOR WILL DELIVER THE RECORD TO THE ENGINEER.

BASIS OF PAYMENT

- REMOVING FRAMES AND LIDS ON DRAINAGE AND UTILITY STRUCTURES IN THE PAVEMENT PRIOR TO MILLING, AND ADJUSTING TO FINAL GRADE PRIOR TO PLACING THE SURFACE COURSE, WILL BE PAID FOR AT THE CONTRACT UNIT PRICE EACH FOR "FRAMES AND LIDS TO BE ADJUSTED (SPECIAL)."
- THIS WORK WILL NOT BE PAID FOR WHEN DRAINAGE AND UTILITY STRUCTURES ARE SPECIFIED FOR PAYMENT AS STRUCTURE RECONSTRUCTION.
- NEW FRAMES AND LIDS, WHEN SPECIFIED, WILL BE PAID FOR SEPARATELY.
- WHEN STRUCTURES ARE TO BE ADJUSTED OR RECONSTRUCTED, THE LOWERING AND RAISING OF THE FRAMES AND LIDS WILL NOT BE PAID FOR SEPARATELY BUT WILL BE INCLUDED IN THE COST OF THE CORRESPONDING PAY ITEM.

ALL DIMENSIONS ARE IN INCHES (MILLIMETERS) UNLESS OTHERWISE SHOWN

MODEL: Default
FILE NAME: W010550323-140500.dgn

USER NAME = demanchett	DESIGNED - R. SHAH	REVISED - R. BORO 01-01-07	STATE OF ILLINOIS DEPARTMENT OF TRANSPORTATION	DETAILS FOR FRAMES AND LIDS ADJUSTMENT WITH MILLING			F.A. RTE.	SECTION	COUNTY	TOTAL SHEETS	SHEET NO.
DRAWN -	CHECKED -	REVISED - R. BORO 03-09-11		SCALE: NONE	SHEET 1	OF 1 SHEETS	STA.	TO STA.	BD600-03 (BD-08)		CONTRACT NO.
PLOT SCALE = 100.0000" / in.	DATE - 10-25-94	REVISED - R. BORO 12-06-11									
PLOT DATE = 2/2/2022	DATE -	REVISED - K. SMITH 02-01-22									

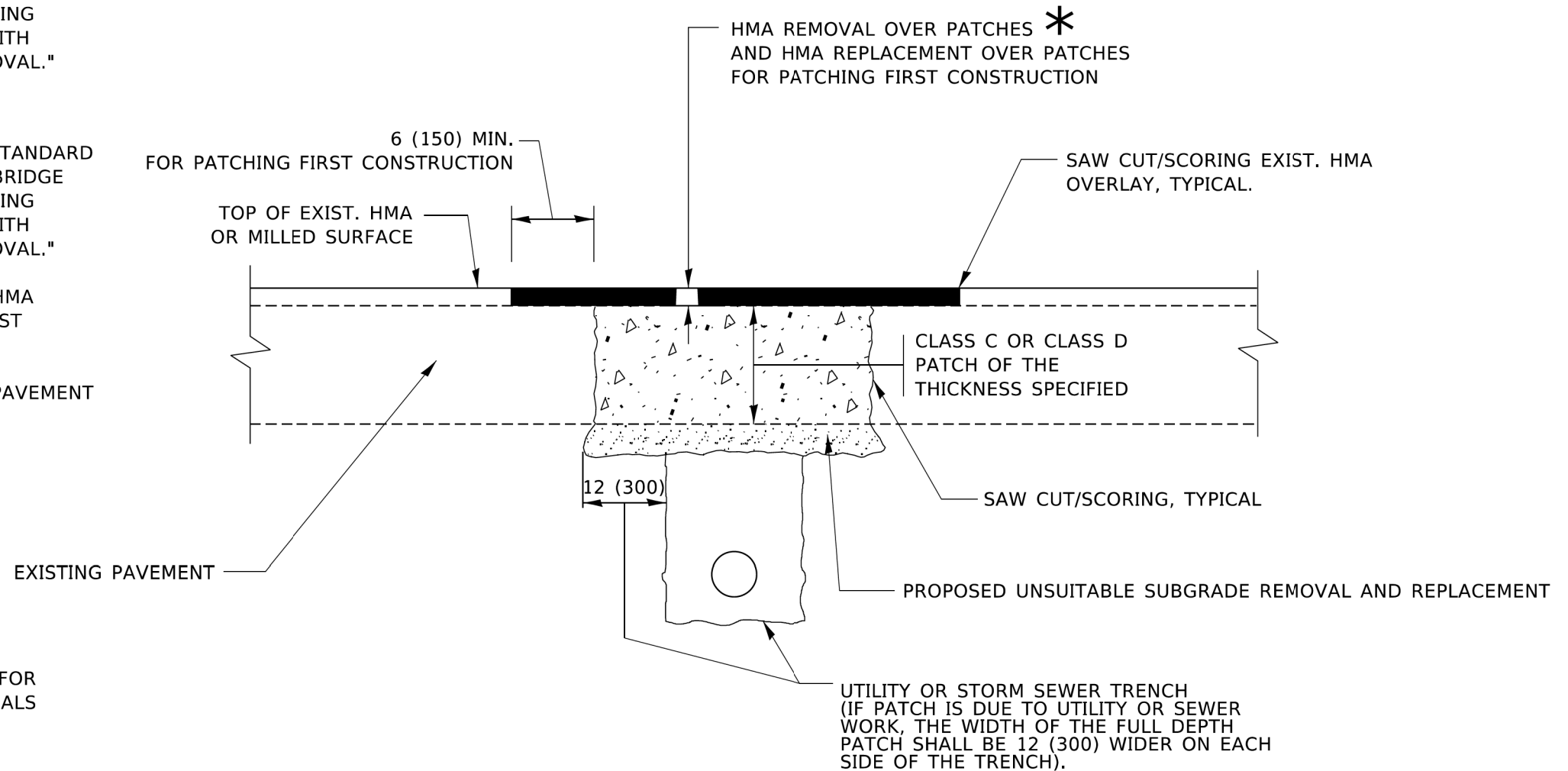
FILE NAME =	USER NAME = blibunoo	DESIGNED - BRL	REVISED -	STATE OF ILLINOIS DEPARTMENT OF TRANSPORTATION	DETAILS FOR FRAMES AND LIDS ADJUSTMENT WITH MILLING			F.A. RTE.	SECTION	COUNTY	TOTAL SHEETS	SHEET NO.		
N:\CHICAGORIDGE\90611\122\Civ11\STD.BDB.0122_01.shd	DRAWN - BRL	CHECKED - AMP	REVISED -		SCALE: NONE	SHEET 14	OF 22 SHEETS	STA.	TO STA.	2955	20-00060-00-R5	COOK	22	14
Default	PLOT SCALE = 48"	DATE -	REVISED -											
	PLOT DATE = 11/17/2022	DATE -	REVISED -											

METHOD OF MEASUREMENT

REFER TO SECTION 442 OF THE STANDARD SPECIFICATIONS FOR ROAD AND BRIDGE CONSTRUCTION AND THE RECURRING SPECIAL PROVISION "PATCHING WITH HOT-MIX ASPHALT OVERLAY REMOVAL."

BASIS OF PAYMENT

1. REFER TO SECTION 442 OF THE STANDARD SPECIFICATIONS FOR ROAD AND BRIDGE CONSTRUCTION AND THE RECURRING SPECIAL PROVISION "PATCHING WITH HOT-MIX ASPHALT OVERLAY REMOVAL."
2. SAW CUT/SCORING OF EXISTING HMA OVERLAY IS INCLUDED IN THE COST OF PAVEMENT PATCHING.
3. SAW CUT/SCORING OF EXISTING PAVEMENT IS INCLUDED IN THE COST OF PAVEMENT PATCHING.



SEQUENCE OF CONSTRUCTION (PATCHING FIRST)

1. REMOVE THE EXISTING HMA MATERIAL OVER THE AREA TO BE PATCHED.
2. REMOVE AND REPLACE WITH CLASS C OR D PATCH.
3. REPLACE HMA MATERIAL OVER THE AREA TO BE PATCHED.

SEQUENCE OF CONSTRUCTION (MILLING FIRST)

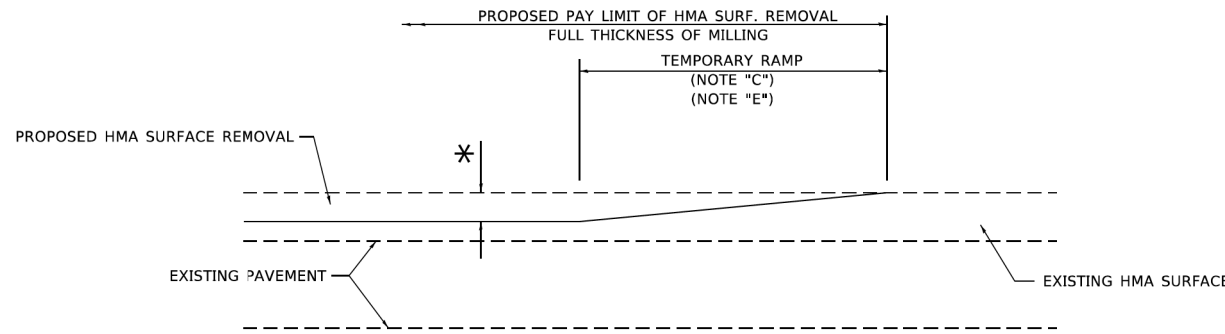
1. MILL HMA FIRST IF THERE IS AT LEAST 4½ INCHES OR MORE OF HMA MATERIAL ON TOP OF THE EXISTING PAVEMENT OR IF THE PAVEMENT IS FULL DEPTH HMA. A MINIMUM OF 2 INCHES OF HMA MATERIAL SHALL BE IN PLACE AFTER MILLING.
2. REMOVE AND REPLACE WITH FULL DEPTH CLASS D PATCHES TO TOP OF MILLED SURFACE.

ALL DIMENSIONS ARE IN INCHES (MILLIMETERS) UNLESS OTHERWISE SHOWN.

MODEL: Default
FILE NAME: W0103503231022.dgn

USER NAME = demanchett	DESIGNED - R. SHAH	REVISED - R. BORO 01-01-07	STATE OF ILLINOIS DEPARTMENT OF TRANSPORTATION	PAVEMENT PATCHING FOR HMA SURFACED PAVEMENT	F.A. RTE.	SECTION	COUNTY	TOTAL SHEETS	SHEET NO.
DRAWN -	REVISED - R. BORO 09-04-07	2955			20-00060-00-R5	COOK	22	15	
PLOT SCALE = 100.0000" / in.	CHECKED -	REVISED - K. ENG 10-27-08			CONTRACT NO. BD400-04 (BD-22)		ILLINOIS FED. AID PROJECT		
PLOT DATE = 2/2/2022	DATE - 10-25-94	REVISED - K. SMITH 02-01-22			SCALE: NONE	SHEET 1 OF 1 SHEETS	STA. TO STA.		

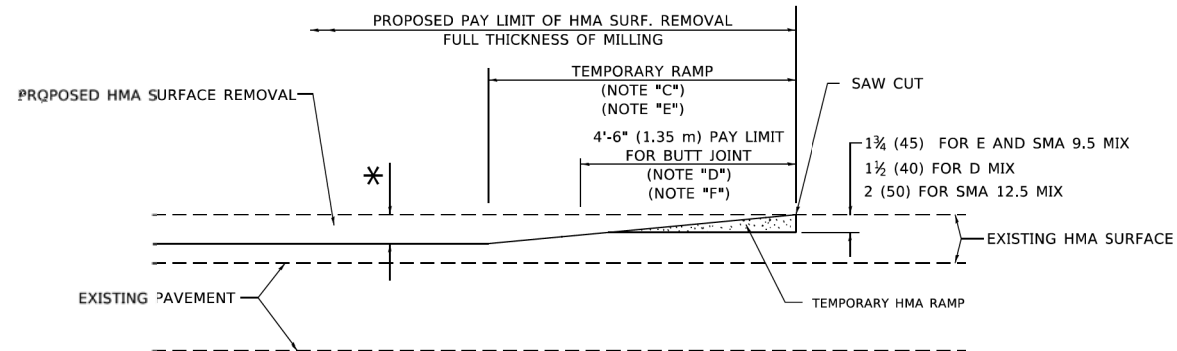
FILE NAME =	USER NAME = blibunoo	DESIGNED - BRL	REVISED -	STATE OF ILLINOIS DEPARTMENT OF TRANSPORTATION	PAVEMENT PATCHING FOR HMA SURFACED PAVEMENT	F.A. RTE.	SECTION	COUNTY	TOTAL SHEETS	SHEET NO.
N:\CHICAGO\RDGE\90611\22\Civ11\STD.BD22	T0122_01.sht	DRAWN - BRL	REVISED -			2955	20-00060-00-R5	COOK	22	15
Default	PLOT SCALE = 48"	CHECKED - AMP	REVISED -			CONTRACT NO. 61J23		ILLINOIS FED. AID PROJECT		
	PLOT DATE = 11/17/2022	DATE -	REVISED -			SCALE: NONE	SHEET 15 OF 22 SHEETS	STA. TO STA.		



MILLED TEMPORARY RAMP

(FOR BUTT JOINT AND HMA TAPER SEE DETAIL BELOW)

OPTION 1

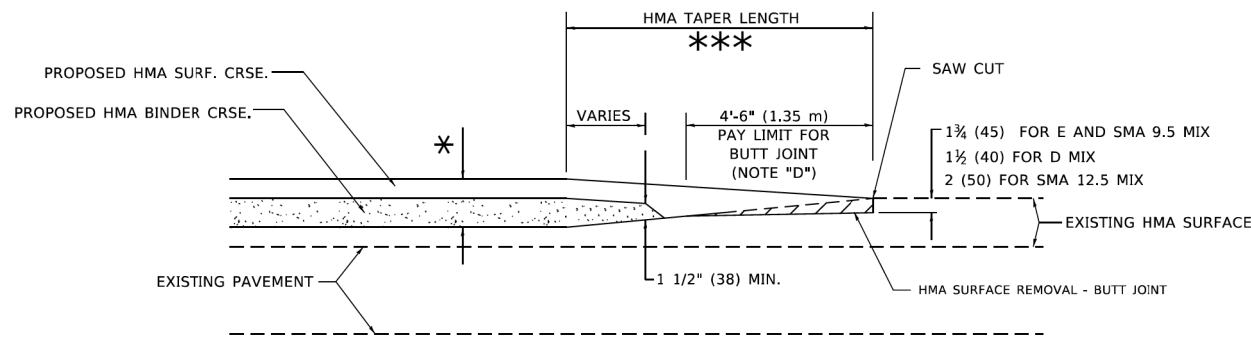


HMA CONSTRUCTED TEMPORARY RAMP

(FOR BUTT JOINT AND HMA TAPER SEE DETAIL BELOW)

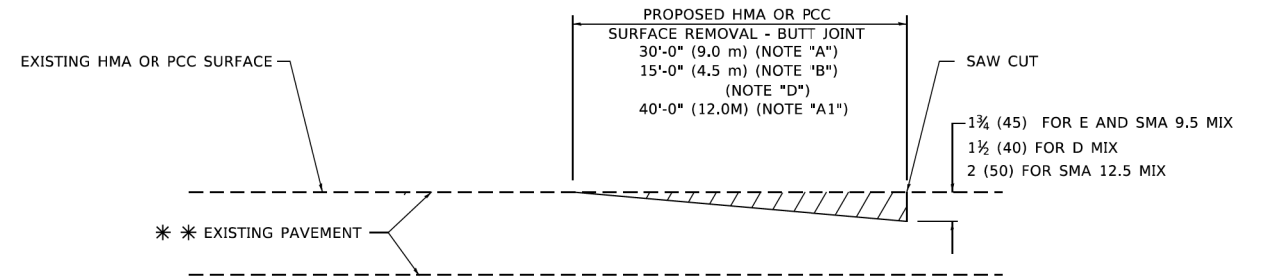
OPTION 2

TYPICAL TEMPORARY RAMP

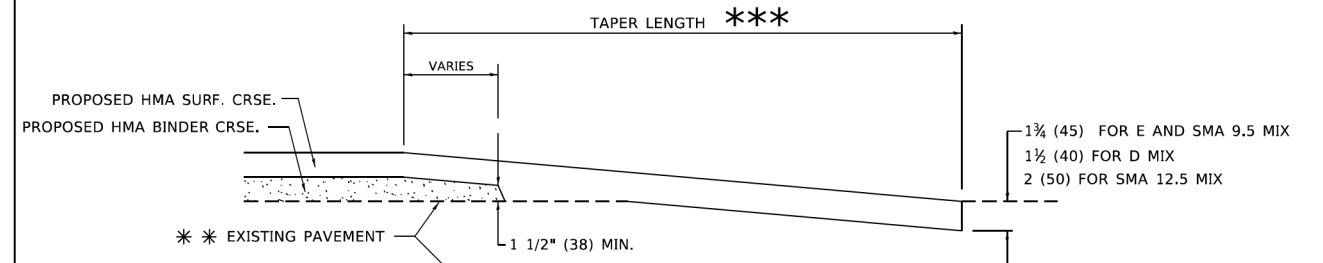


**BUTT JOINT AND
HMA TAPER**

**TYPICAL BUTT JOINT AND HMA TAPER
FOR MILLING AND RESURFACING**



BUTT JOINT DETAIL



HMA TAPER DETAIL

**TYPICAL BUTT JOINT AND HMA TAPER
FOR RESURFACING ONLY**

*** PC CONCRETE, HMA OR HMA RESURFACED PAVEMENT.

GENERAL NOTES

- A. MAINLINE ARTERIAL ROADWAYS AND MAJOR SIDE ROADS.
- A1. INTERSTATES
- B. MINOR SIDE ROADS.
- C. THE TEMP. RAMP SHALL BE CONSTRUCTED IMMEDIATELY UPON REMOVAL OF THE EXISTING HMA SURFACE.
- D. THE BUTT JOINT SHALL BE CONSTRUCTED IMMEDIATELY PRIOR TO PLACING THE PROPOSED HMA COURSES.
- E. TAPER THE TEMP. RAMP AT A RATE OF 3' - 4" (1.02m) PER 1 INCH (25 mm) OF MILLING THICKNESS.
* SEE TYPICAL SECTIONS FOR MILLING THICKNESS.
- F. SEE ARTICLE 406.08 AND 406.14 OF THE STANDARD SPECIFICATIONS FOR "HMA AND/OR PCC SURFACE REMOVAL, BUTT JOINT".
*** 20'-0" (6.1 m) PER 1 (25) RESURFACING (NOTE "A")
10'-0" (3.0 m) PER 1 (25) RESURFACING (NOTE "B")

BASIS OF PAYMENT

- 1. THE BUTT JOINT WILL BE PAID FOR AT THE CONTRACT UNIT PRICE PER SQUARE YARD (SQUARE METER) FOR "HOT-MIX ASPHALT SURFACE REMOVAL - BUTT JOINT" OR FOR "PORTLAND CEMENT CONCRETE SURFACE REMOVAL - BUTT JOINT".
- 2. THE TEMPORARY RAMP AND SAW CUT SHALL BE INCLUDED IN THE UNIT COST FOR HMA OR PCC SURFACE REMOVAL-BUTT JOINT.

ALL DIMENSIONS ARE IN INCHES (MILLIMETERS) UNLESS OTHERWISE SHOWN.

MODEL: Default
FILE NAME: W010350323-101031.dgn

USER NAME = demanchelt	DESIGNED - M. DE YONG	REVISED - A. ABBAS 03-21-97
	DRAWN -	REVISED - M. GOMEZ 04-06-01
PLOT SCALE = 100.0000' / in.	CHECKED -	REVISED - R. BORO 01-01-07
PLOT DATE = 2/2/2022	DATE - 06-13-90	REVISED - K. SMITH 02-01-22

**STATE OF ILLINOIS
DEPARTMENT OF TRANSPORTATION**

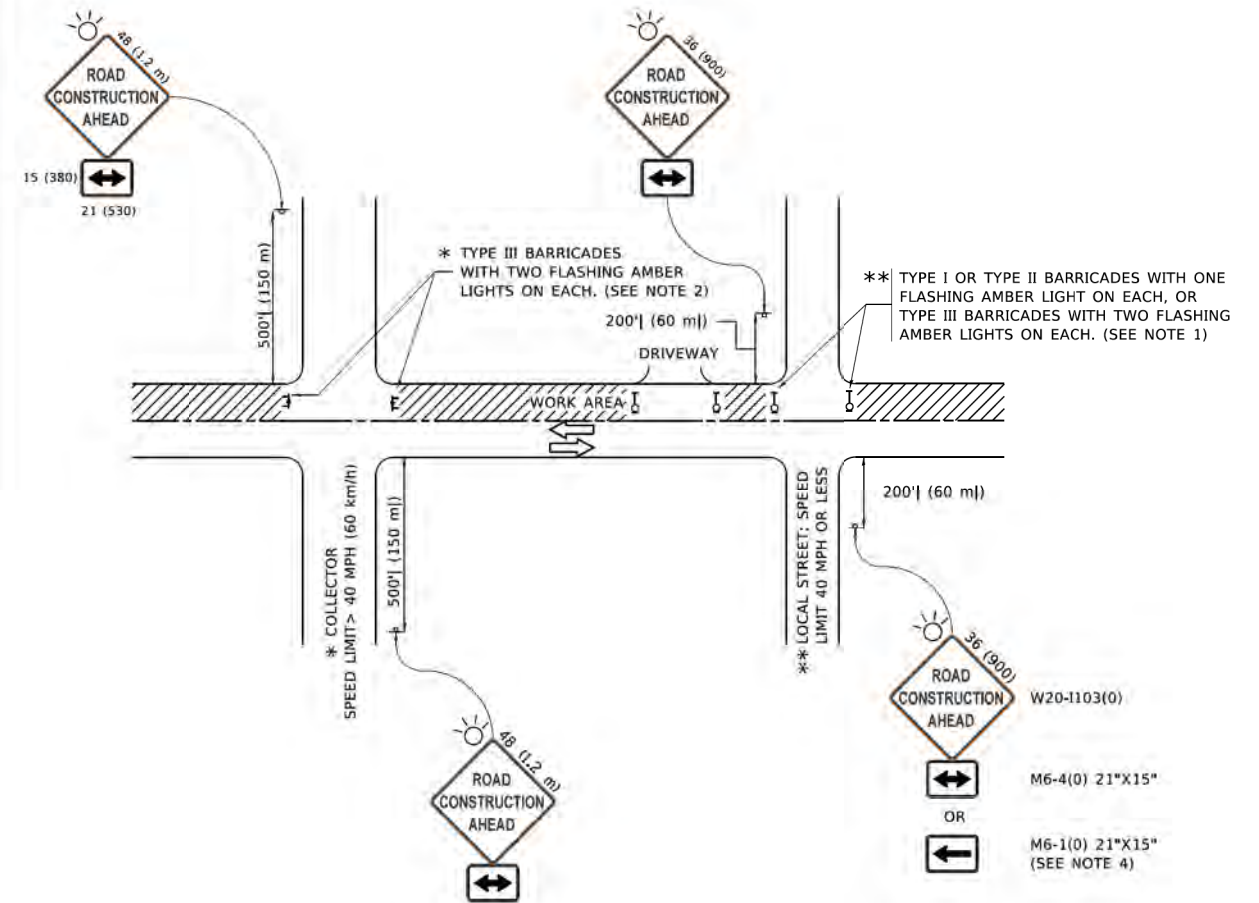
BUTT JOINT AND HMA TAPER DETAILS		F.A.U. RTE.	SECTION	COUNTY	TOTAL SHEETS	SHEET NO.
SCALE: NONE	SHEET 1 OF 1 SHEETS	STA.	TO STA.	BD400-05 BD-32 CONTRACT NO.		
ILLINOIS FED. AID PROJECT						

FILE NAME =	USER NAME = blibunoo	DESIGNED - BRL	REVISED -
N:\CHICAGO\RDGE\90611\122\Civ11\STD.BD32	T0122.01.sht	DRAWN - BRL	REVISED -
Default	PLOT SCALE = 48"	CHECKED - AMP	REVISED -
	PLOT DATE = 11/17/2022	DATE -	REVISED -

**STATE OF ILLINOIS
DEPARTMENT OF TRANSPORTATION**

BUTT JOINT AND HMA TAPER DETAILS		F.A.U. RTE.	SECTION	COUNTY	TOTAL SHEETS	SHEET NO.
SCALE: NONE	SHEET 17 OF 22 SHEETS	STA.	TO STA.	2955 20-00060-00-R5 COOK 22 17 CONTRACT NO. 61J23		
ILLINOIS FED. AID PROJECT						

Model: Default
 FILE NAME = P:\061122\Civ11\STD_TC10\1\Project\BIDD\Documents\DOT_Coffees\Traffic TC10.dgn



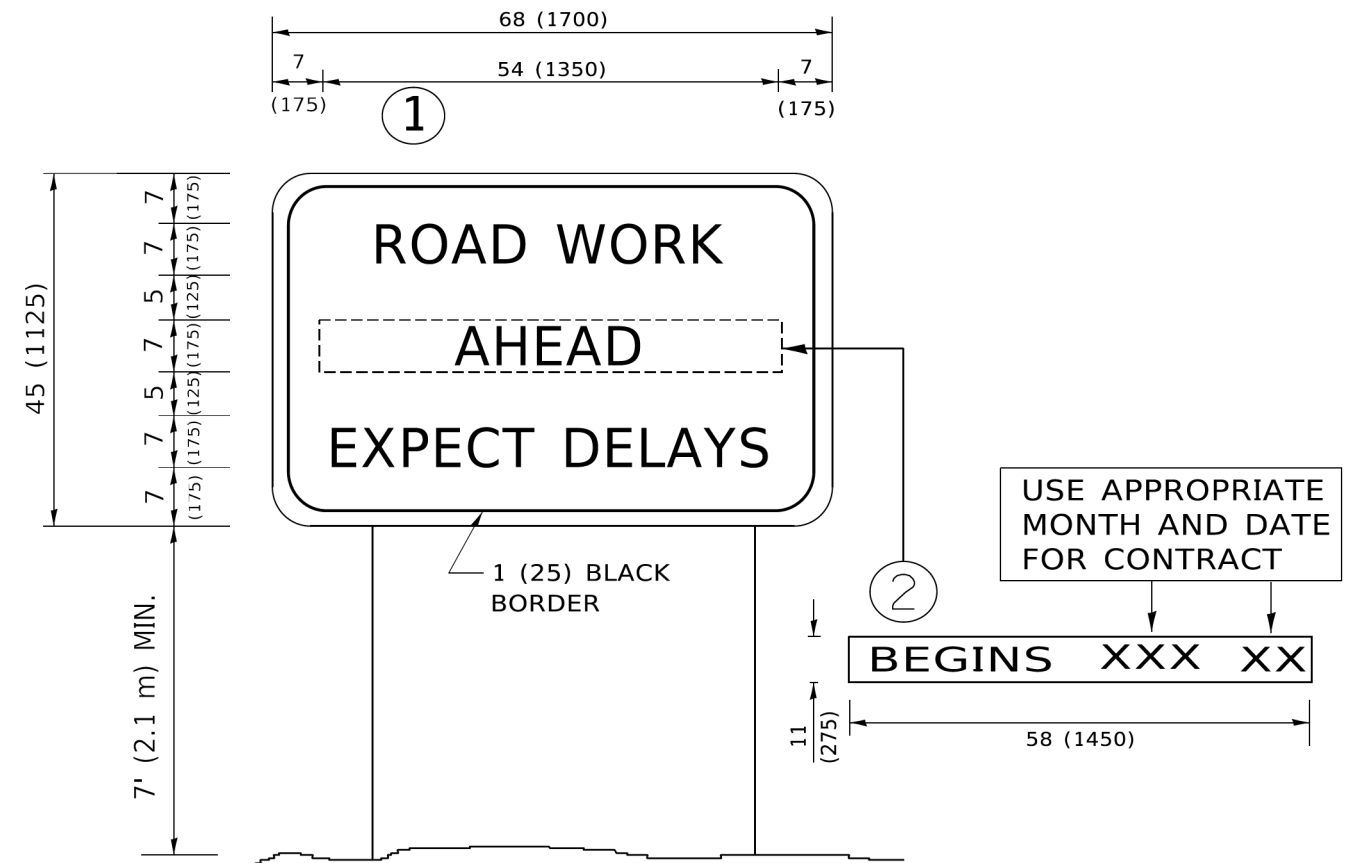
NOTES:

- SIDE ROAD WITH A SPEED LIMIT OF 40 MPH (60 km/h) OR LESS AS SHOWN ON THE DRAWING AND AS DIRECTED BY THE ENGINEER:
 - ONE "ROAD CONSTRUCTION AHEAD" SIGN 36 x 36 (900x900) WITH A FLASHER MOUNTED ON IT APPROXIMATELY 200' (60 m) IN ADVANCE OF THE MAIN ROUTE.
 - THE CLOSED PORTION OF THE MAIN ROUTE SHALL BE PROTECTED BY BLOCKING WITH TYPE I, TYPE II OR TYPE III BARRICADES, 1/3 OF THE CROSS SECTION OF THE CLOSED PORTION.
- SIDE ROAD WITH A SPEED LIMIT GREATER THAN 40 MPH (60 km/h) AS SHOWN ON THE DRAWING AND AS DIRECTED BY THE ENGINEER:
 - ONE "ROAD CONSTRUCTION AHEAD" SIGN 48 x 48 (1.2 m x 1.2 m) WITH A FLASHER MOUNTED ON IT APPROXIMATELY 500' (150 m) IN ADVANCE OF THE MAIN ROUTE.
 - THE CLOSED PORTION OF THE MAIN ROUTE SHALL BE PROTECTED BY BLOCKING WITH TYPE III BARRICADES, 1/2 OF THE CROSS SECTION OF THE CLOSED PORTION.
- CONES MAY BE SUBSTITUTED FOR BARRICADES OR DRUMS AT HALF THE SPACING DURING DAY OPERATIONS. CONES SHALL BE A MINIMUM OF 28 (710) IN HEIGHT.
- SIGNING AND THE WORK ZONE, A SINGLE HEADED ARROW (M6-1) SHALL BE USED IN LIEU OF THE DOUBLE HEADED ARROW (M6-4).
- WHEN WORK IS BEING PERFORMED ON A SIDE ROAD OR DRIVEWAY, FOLLOW THE APPLICABLE STANDARD(S). THE DIRECTIONAL ARROW (M6-1 OR M6-4) SHALL BE COVERED OR REMOVED WHEN NO LONGER CONSISTENT WITH THE TRAFFIC CONTROL SET-UP.
- ADVANCE WARNING SIGNS ARE TO BE OMITTED ON DRIVEWAYS UNLESS OTHERWISE SPECIFIED IN THE PLANS OR BY THE ENGINEER.
- THE TRAFFIC CONTROL AND PROTECTION FOR SIDE ROADS, INTERSECTIONS, AND DRIVEWAYS SHALL BE INCLUDED IN THE COST OF SPECIFIED TRAFFIC CONTROL STANDARDS OR ITEMS.

All dimensions are in inches (millimeters) unless otherwise shown.

USER NAME = footernj PLOT SCALE = 50.0000' / in. PLOT DATE = 3/4/2019	DESIGNED - L.H.A.	REVISED - A. HOUSEH 10-15-96	STATE OF ILLINOIS DEPARTMENT OF TRANSPORTATION	TRAFFIC CONTROL AND PROTECTION FOR SIDE ROADS, INTERSECTIONS, AND DRIVEWAYS	F.A.U. RTE.	SECTION	COUNTY	TOTAL SHEETS	SHEET NO.
	DRAWN -	REVISED - T. RAMMACHER 01-06-00			SCALE: NONE SHEET 1 OF 1 SHEETS STA. TO STA.	TC-10	CONTRACT NO.	ILLINOIS FED. AID PROJECT	
	CHECKED -	REVISED - A. SCHUETZE 07-01-13							
	DATE - 06-89	REVISED - A. SCHUETZE 09-15-16							

FILE NAME = N:\CHICAGO RIDGE\90611\122\Civ11\STD_TC10\1\Project\BIDD\Documents\DOT_Coffees\Traffic TC10.dgn Default	USER NAME = blibunoo	DESIGNED - BRL	REVISED -	STATE OF ILLINOIS DEPARTMENT OF TRANSPORTATION	TRAFFIC CONTROL AND PROTECTION FOR SIDE ROADS, INTERSECTIONS, AND DRIVEWAYS	F.A.U. RTE.	SECTION	COUNTY	TOTAL SHEETS	SHEET NO.	
	T0122.01.sht	DRAWN - BRL	REVISED -			SCALE: NONE SHEET 18 OF 22 SHEETS STA. TO STA.	2955	20-00060-00-R5	COOK	22	18
	PLOT SCALE = 48'	CHECKED - AMP	REVISED -								
	DATE -	REVISED -	CONTRACT NO. 61J23								



NOTES:

1. USE BLACK LETTERING ON ORANGE BACKGROUND.
2. ERECT SIGNS IN ADVANCE OF THE LOCATION FOR THE "ROAD CONSTRUCTION AHEAD" SIGN AT LOCATIONS AS DIRECTED BY THE ENGINEER.
3. ERECT SIGN ① WITH INSTALLED PANEL ② ONE WEEK PRIOR TO THE START OF CONSTRUCTION.
4. REMOVE PANEL ② SOON AFTER THE START OF CONSTRUCTION.
5. SEE SPECIAL PROVISION FOR "TEMPORARY INFORMATION SIGNING" FOR ADDITIONAL INFORMATION.
6. ONE SIGN ASSEMBLY EQUALS 25.70 SQ. FT. (2.3 SQ. M.)
7. SHALL BE PAID FOR AS TEMPORARY INFORMATION SIGNING.

ALL DIMENSIONS ARE IN INCHES (MILLIMETERS) UNLESS OTHERWISE SHOWN.

MODEL: Default
 FILE NAME: I:\PROJECTS\2019\DOT\Documents\DOT_Offices\Burl\1\Projects\081822\231\CADData\CAD\sheet23.dgn

USER NAME = footemj	DESIGNED -	REVISED - R. MIRS 09-15-97
	DRAWN -	REVISED - R. MIRS 12-11-97
PLOT SCALE = 50.0000" / in.	CHECKED -	REVISED - T. RAMMACHER 02-02-99
PLOT DATE = 3/4/2019	DATE -	REVISED - C. JUCIUS 01-31-07

STATE OF ILLINOIS DEPARTMENT OF TRANSPORTATION	
SCALE: NONE	SHEET 1 OF 1 SHEETS STA. TO STA.

ARTERIAL ROAD INFORMATION SIGN	
SCALE: NONE	SHEET 1 OF 1 SHEETS STA. TO STA.

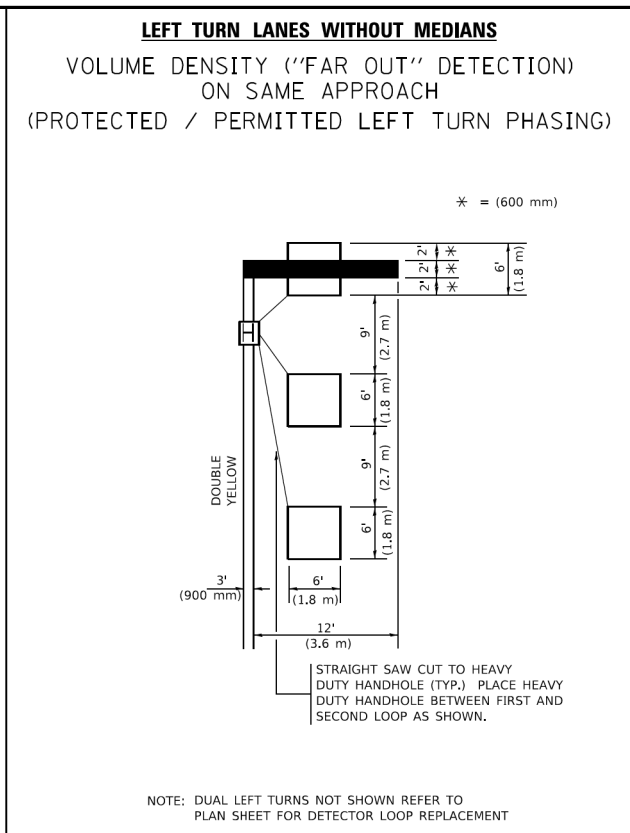
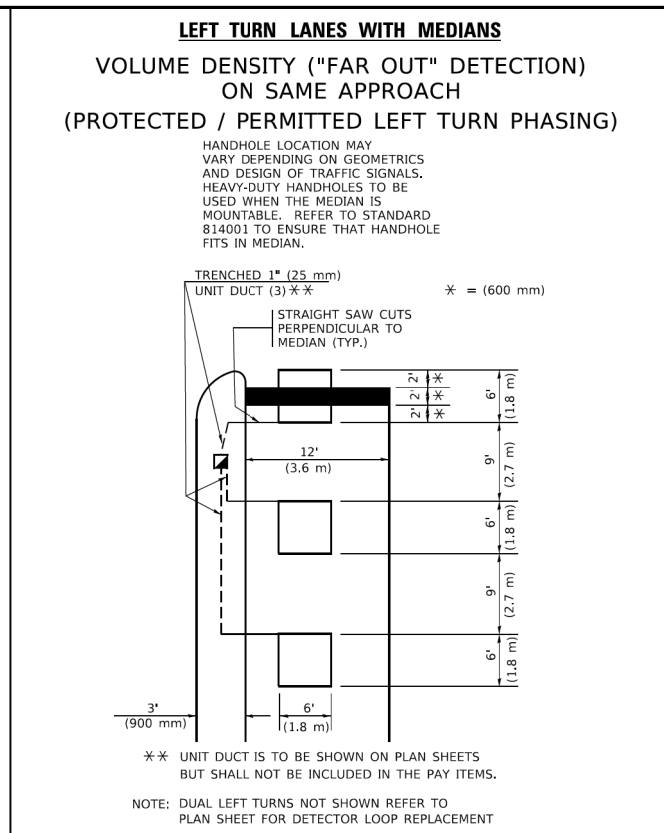
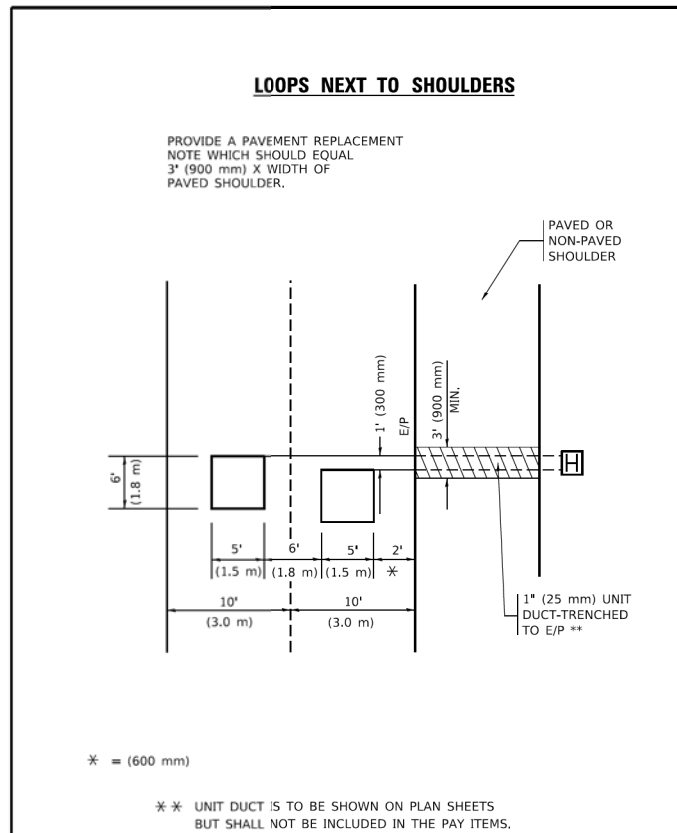
F.A. RTE.	SECTION	COUNTY	TOTAL SHEETS	SHEET NO.
TC-22		CONTRACT NO.		
ILLINOIS FED. AID PROJECT				

FILE NAME =	USER NAME = blibunoo	DESIGNED - BRL	REVISED -
N:\CHICAGO\RDGE\90611\22\Civi1\STD_TC22	T0122_01.sht	DRAWN - BRL	REVISED -
Default	PLOT SCALE = 48"	CHECKED - AMP	REVISED -
	PLOT DATE = 11/17/2022	DATE -	REVISED -

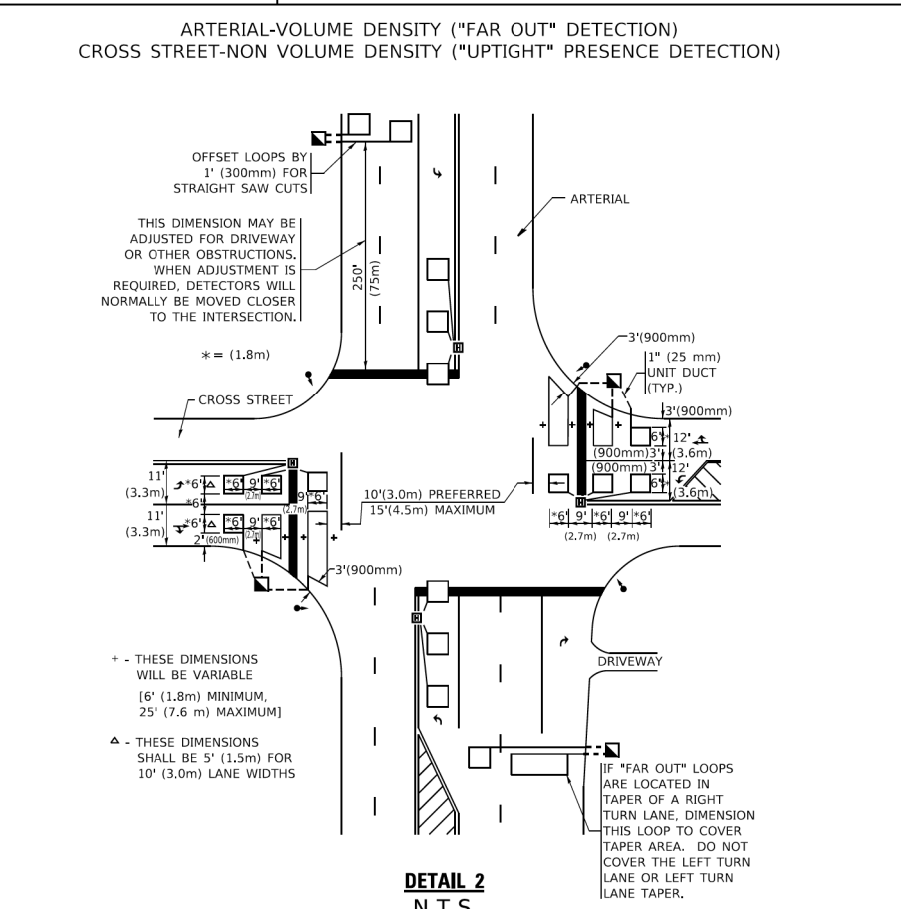
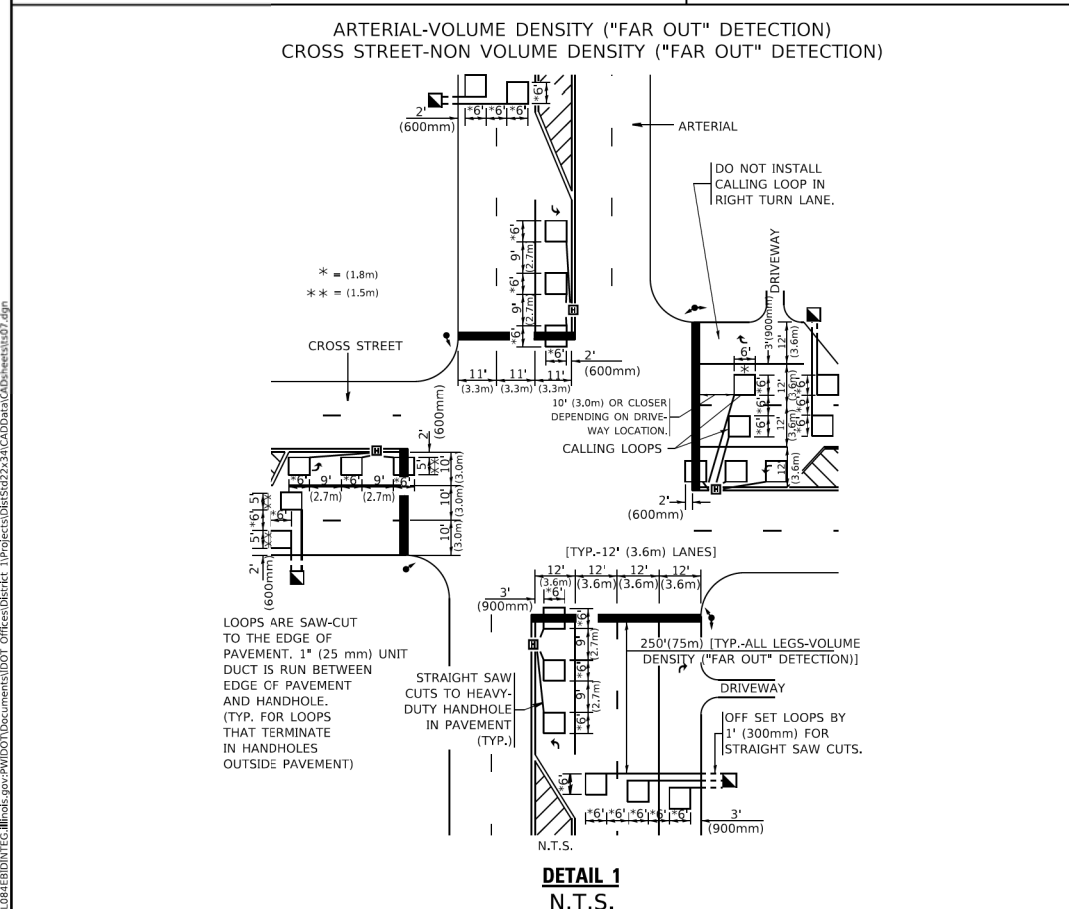
STATE OF ILLINOIS DEPARTMENT OF TRANSPORTATION	
SCALE: NONE	SHEET 20 OF 22 SHEETS STA. TO STA.

ARTERIAL ROAD INFORMATION SIGN	
SCALE: NONE	SHEET 20 OF 22 SHEETS STA. TO STA.

F.A. RTE.	SECTION	COUNTY	TOTAL SHEETS	SHEET NO.
2955	20-00060-00-R5	COOK	22	20
TC-22		CONTRACT NO. 61J23		
ILLINOIS FED. AID PROJECT				



- NOTES:
- VEHICLES LOOP DETECTORS
 - * ALL LEAD IN CABLE SHALL BE TWO CONDUCTOR NO. 14 TWISTED, SHIELDED.
 - * EACH DETECTOR LOOP SHALL HAVE ITS OWN SAW CUT FROM THE LOOP TO THE EDGE OF PAVEMENT OR TO A HANDHOLE IN THE PAVEMENT.
 - * EACH DETECTOR LOOP SHALL HAVE ITS OWN ONE INCH (25 mm) UNIT DUCT BETWEEN THE EDGE OF PAVEMENT AND THE FIRST HANDHOLE OR JUNCTION BOX. EACH UNIT DUCT RUN SHALL BE SHOWN ON THE PLANS BY THE DESIGNER, BUT SHALL NOT BE PAID FOR SEPARATLY. THIS ITEM IS INCIDENTAL TO THE PAY ITEM FOR DETECTOR LOOPS.
 - * ONE DIMENSION OF ALL DETECTOR LOOPS SHALL BE SIX FEET (1.8 m)
 - * EACH LANE OF NON-LOCKING, PRESENCE DETECTION AND EACH LANE OF A DOUBLE LEFT TURN LANE REQUIRES A SEPARATE INDUCTIVE LOOP DETECTOR AND LEAD IN CABLE.
 - * WHEN NON-LOCKING, PRESENCE DETECTION IS USED, MORE THAN ONE LOOP PER LANE IS REQUIRED BEHIND THE STOP BAR (i.e. 1-1/2, 1-3/4, 2).
 - * WHEN SYSTEM LOOPS ARE REQUIRED ON AN APPROACH OF AN INTERSECTION, THE LOOPS USED FOR VOLUME DENSITY AND INTERSECTION TIMING SHALL ALSO BE USED AS SYSTEM DETECTORS. EACH ONE OF THESE TYPE OF LOOPS REQUIRES A SEPARATE TWO CONDUCTOR NO. 14 TWISTED SHIELDED CABLE AND A SEPARATE INDUCTIVE LOOP DETECTOR WHEN NEW CONTROLLERS ARE UTILIZED. THE DESIGNER SHALL LABEL THESE TYPES OF LOOPS AS "INTERSECTION AND SAMPLING (SYSTEM) DETECTORS" ON THE SIGNAL LAYOUT, THE INTERCONNECT PLAN AND THE SYSTEM CABLE PLAN. WHEN AN EXISTING CONTROLLER IS UTILIZED FOR THIS TYPE OF DETECTION, THE PAY ITEM "INDUCTIVE LOOP DETECTOR WITH SYSTEM OUTPUT" SHOULD BE USED.



PLACEMENT OF DETECTORS

THE FOLLOWING FIGURES REPRESENT THE MOST COMMON DETECTOR LOOP LOCATIONS AND SIZES. ADJUSTMENTS WILL BE NECESSARY FOR SPECIFIC GEOMETRIC CONSIDERATIONS.

LOCATIONS AND DIMENSIONS OF DETECTOR LOOPS ARE REQUIRED ON ALL SIGNAL LAYOUT PLAN SHEETS.

"FAR OUT" DETECTION REFERS TO LOCKING, PRESENCE TYPE DETECTION LOCATED IN THRU LANES, RIGHT TURN LANES, AND RIGHT TURN LANE TAPER AREAS (IF APPLICABLE), USUALLY 250' (75 m) IN ADVANCE OF STOP BARS. "UPTIGHT" DETECTION REFERS TO NON-LOCKING PRESENCE TYPE DETECTION LOCATED IN ALL LANES AND 10'-15' (3.0 m-4.5 m) BEHIND THE CROSSING STREET'S EDGE OF PAVEMENT EXTENDED.

NOTE:
ALL DETAILS AND NOTES SHOWN ARE FROM THE I.D.O.T. DISTRICT 1 TRAFFIC SIGNAL DESIGN GUIDELINES DATED JANUARY 1995

THIS DRAWING HAS BEEN PREPARED TO ASSIST THE RESIDENT ENGINEER FOR ALL ROADWAY RESURFACING OR S.M.A.R.T. PROJECTS WHERE THE DIMENSIONS ARE NOT SHOWN ON THE PLANS AND THE FINAL LOCATIONS FOR CROSSWALKS OR STOP BARS ARE NOT DETERMINED.

USER NAME = footemj	DESIGNED -	REVISED -
PLOT SCALE = 50.0000' / in.	CHECKED - R.K.F.	REVISED -
PLOT DATE = 3/4/2019	DATE -	REVISED -

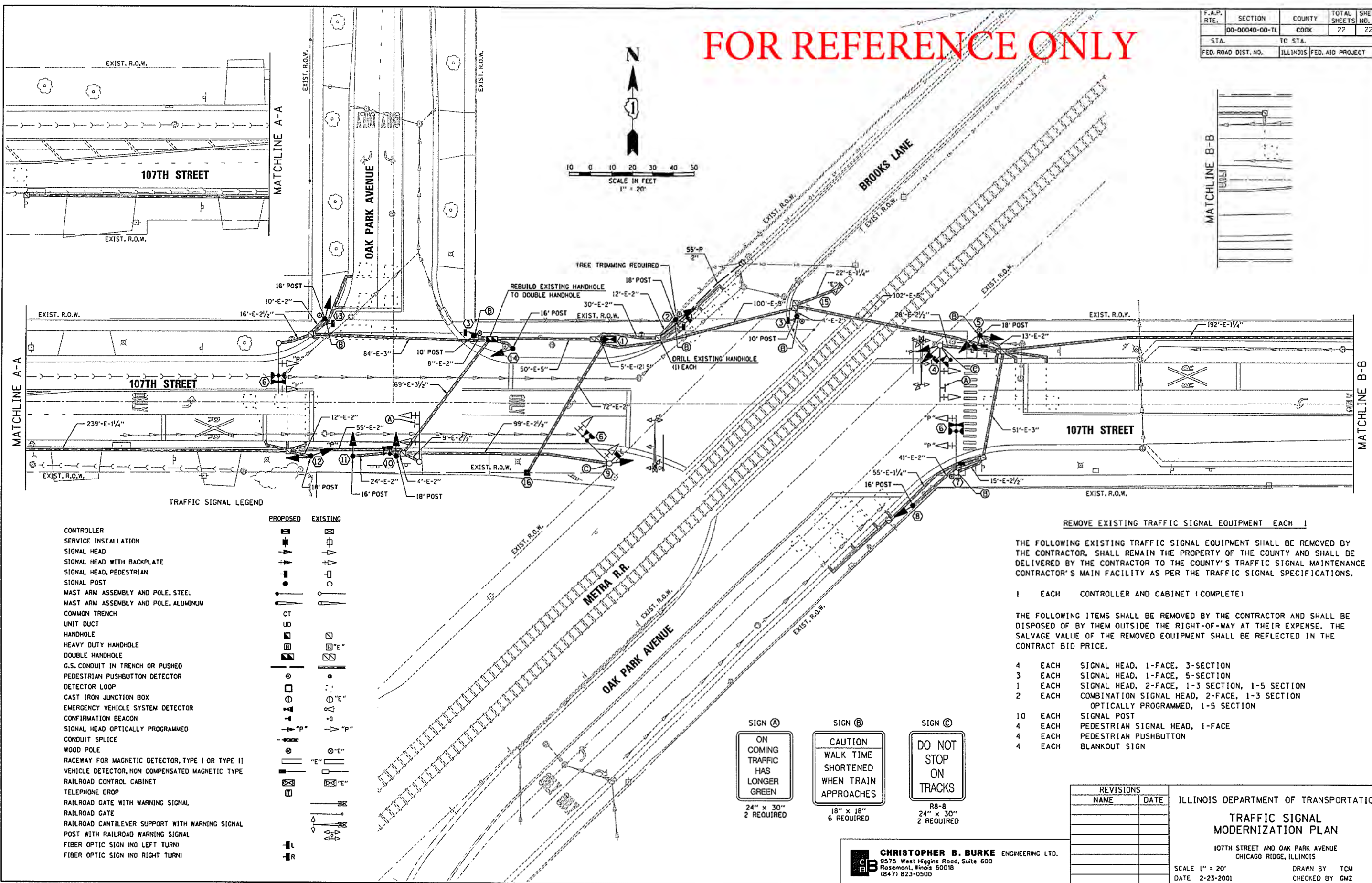
STATE OF ILLINOIS DEPARTMENT OF TRANSPORTATION	DISTRICT 1 - DETECTOR LOOP INSTALLATION		F.A.U. RTE.	SECTION	COUNTY	TOTAL SHEETS	SHEET NO.
	DETAILS FOR ROADWAY RESURFACING		TS-07		CONTRACT NO.		
SCALE: NONE	SHEET 1	OF 1 SHEETS	STA.	TO STA.		ILLINOIS FED. AID PROJECT	

FILE NAME =	USER NAME = blibunoo	DESIGNED - BRL	REVISED -
N:\CHICAGO\RDGE\90611\22\Civ11\STD_TS07	T0122.01.sht	DRAWN - BRL	REVISED -
Default	PLOT SCALE = 48'	CHECKED - AMP	REVISED -
	PLOT DATE = 11/17/2022	DATE -	REVISED -

STATE OF ILLINOIS DEPARTMENT OF TRANSPORTATION	DISTRICT 1 - DETECTOR LOOP INSTALLATION		F.A.U. RTE.	SECTION	COUNTY	TOTAL SHEETS	SHEET NO.
	DETAILS FOR ROADWAY RESURFACING		2955	20-00060-00-R5	COOK	22	21
SCALE: NONE	SHEET 21	OF 22 SHEETS	STA.	TO STA.		CONTRACT NO. 61J23	
				ILLINOIS FED. AID PROJECT			

FOR REFERENCE ONLY

F.A.P. RTE.	SECTION	COUNTY	TOTAL SHEETS	SHEET NO.
00-00040-00-TL	COOK	22	22	
STA.	TO STA.			
FED. ROAD DIST. NO.	ILLINOIS FED. AID PROJECT			



TRAFFIC SIGNAL LEGEND

	PROPOSED	EXISTING
CONTROLLER	[Symbol]	[Symbol]
SERVICE INSTALLATION	[Symbol]	[Symbol]
SIGNAL HEAD	[Symbol]	[Symbol]
SIGNAL HEAD WITH BACKPLATE	[Symbol]	[Symbol]
SIGNAL HEAD, PEDESTRIAN	[Symbol]	[Symbol]
SIGNAL POST	[Symbol]	[Symbol]
MAST ARM ASSEMBLY AND POLE, STEEL	[Symbol]	[Symbol]
MAST ARM ASSEMBLY AND POLE, ALUMINUM	[Symbol]	[Symbol]
COMMON TRENCH	[Symbol]	[Symbol]
UNIT DUCT	[Symbol]	[Symbol]
HANDHOLE	[Symbol]	[Symbol]
HEAVY DUTY HANDHOLE	[Symbol]	[Symbol]
DOUBLE HANDHOLE	[Symbol]	[Symbol]
G.S. CONDUIT IN TRENCH OR PUSHED	[Symbol]	[Symbol]
PEDESTRIAN PUSHBUTTON DETECTOR	[Symbol]	[Symbol]
DETECTOR LOOP	[Symbol]	[Symbol]
CAST IRON JUNCTION BOX	[Symbol]	[Symbol]
EMERGENCY VEHICLE SYSTEM DETECTOR	[Symbol]	[Symbol]
CONFIRMATION BEACON	[Symbol]	[Symbol]
SIGNAL HEAD OPTICALLY PROGRAMMED	[Symbol]	[Symbol]
CONDUIT SPLICE	[Symbol]	[Symbol]
WOOD POLE	[Symbol]	[Symbol]
RACEWAY FOR MAGNETIC DETECTOR, TYPE I OR TYPE II	[Symbol]	[Symbol]
VEHICLE DETECTOR, NON COMPENSATED MAGNETIC TYPE	[Symbol]	[Symbol]
RAILROAD CONTROL CABINET	[Symbol]	[Symbol]
TELEPHONE DROP	[Symbol]	[Symbol]
RAILROAD GATE WITH WARNING SIGNAL	[Symbol]	[Symbol]
RAILROAD GATE	[Symbol]	[Symbol]
RAILROAD CANTILEVER SUPPORT WITH WARNING SIGNAL	[Symbol]	[Symbol]
POST WITH RAILROAD WARNING SIGNAL	[Symbol]	[Symbol]
FIBER OPTIC SIGN (NO LEFT TURN)	[Symbol]	[Symbol]
FIBER OPTIC SIGN (NO RIGHT TURN)	[Symbol]	[Symbol]

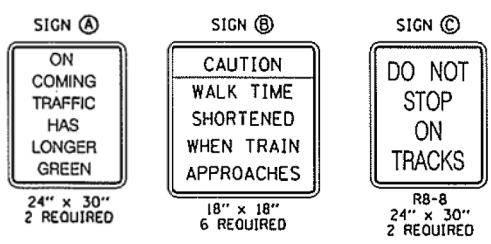
REMOVE EXISTING TRAFFIC SIGNAL EQUIPMENT EACH 1

THE FOLLOWING EXISTING TRAFFIC SIGNAL EQUIPMENT SHALL BE REMOVED BY THE CONTRACTOR, SHALL REMAIN THE PROPERTY OF THE COUNTY AND SHALL BE DELIVERED BY THE CONTRACTOR TO THE COUNTY'S TRAFFIC SIGNAL MAINTENANCE CONTRACTOR'S MAIN FACILITY AS PER THE TRAFFIC SIGNAL SPECIFICATIONS.

- 1 EACH CONTROLLER AND CABINET (COMPLETE)

THE FOLLOWING ITEMS SHALL BE REMOVED BY THE CONTRACTOR AND SHALL BE DISPOSED OF BY THEM OUTSIDE THE RIGHT-OF-WAY AT THEIR EXPENSE. THE SALVAGE VALUE OF THE REMOVED EQUIPMENT SHALL BE REFLECTED IN THE CONTRACT BID PRICE.

- 4 EACH SIGNAL HEAD, 1-FACE, 3-SECTION
- 3 EACH SIGNAL HEAD, 1-FACE, 5-SECTION
- 1 EACH SIGNAL HEAD, 2-FACE, 1-3 SECTION, 1-5 SECTION
- 2 EACH COMBINATION SIGNAL HEAD, 2-FACE, 1-3 SECTION OPTICALLY PROGRAMMED, 1-5 SECTION
- 10 EACH SIGNAL POST
- 4 EACH PEDESTRIAN SIGNAL HEAD, 1-FACE
- 4 EACH PEDESTRIAN PUSHBUTTON
- 4 EACH BLANKOUT SIGN



REVISIONS	
NAME	DATE

ILLINOIS DEPARTMENT OF TRANSPORTATION
TRAFFIC SIGNAL MODERNIZATION PLAN
 107TH STREET AND OAK PARK AVENUE
 CHICAGO RIDGE, ILLINOIS
 SCALE 1" = 20'
 DATE 2-23-2001
 DRAWN BY TCM
 CHECKED BY GMZ

CHRISTOPHER B. BURKE ENGINEERING LTD.
 9575 West Higgins Road, Suite 600
 Rosemont, Illinois 60018
 (847) 823-0500

FILE NAME =	USER NAME = blibunee	DESIGNED - BRL	REVISED -
N:\CHICAGO\RIDG\90611\22\Civ1\REF_DETECTOR_LOOP_01.shd		DRAWN - BRL	REVISED -
Default	PLOT SCALE = 48"	CHECKED - AMP	REVISED -
	PLOT DATE = 11/17/2022	DATE -	REVISED -

**STATE OF ILLINOIS
 DEPARTMENT OF TRANSPORTATION**

**EXISTING TRAFFIC SIGNAL PLAN
 (FOR REFERENCE ONLY)**

SCALE: 1:20 SHEET 22 OF 22 SHEETS STA. TO STA.

F.A.U. RTE.	SECTION	COUNTY	TOTAL SHEETS	SHEET NO.
2955	20-00060-00-R5	COOK	22	22
CONTRACT NO. 61J23				
ILLINOIS FED. AID PROJECT				