

MODEL - Default
 FILE NAME: C:\Users\ChiSengCheong\OneDrive - Project\Illinois Department of Transportation\091-076-21_HBR05_CADD\Revised\Bd\CADD_Sheets\121219-SHT-500-2.dgn

PAY ITEM NUMBER	DESIGNATION	UNIT	URBAN			
			TOTAL QUANTITY	CONSTRUCTION CODE		
				0005	0021	
			80% FEDERAL 20% STATE	100% STATE	80% FEDERAL 20% STATE	
70300261	TEMPORARY PAVEMENT MARKING - LINE 12"- PAINT	FOOT	9,999	9,999		
70300281	TEMPORARY PAVEMENT MARKING - LINE 24"- PAINT	FOOT	2,600	2,600		
70306120	TEMPORARY PAVEMENT MARKING - LINE 4" - TYPE III TAPE	FOOT	6,475	6,475		
* 72000100	SIGN PANEL - TYPE 1	SQ FT	152	152		
* 72800100	TELESCOPING STEEL SIGN SUPPORT	FOOT	320	320		
* 78000100	THERMOPLASTIC PAVEMENT MARKING - LETTERS AND SYMBOLS	SQ FT	2,642	2,642		
* 78000200	THERMOPLASTIC PAVEMENT MARKING - LINE 4"	FOOT	38,845	38,845		
* 78000400	THERMOPLASTIC PAVEMENT MARKING - LINE 6"	FOOT	21,249	21,249		
* 78000600	THERMOPLASTIC PAVEMENT MARKING - LINE 12"	FOOT	9,999	9,999		
* 78000650	THERMOPLASTIC PAVEMENT MARKING - LINE 24"	FOOT	2,600	2,600		
* 78100100	RAISED REFLECTIVE PAVEMENT MARKER	EACH	1,090	1,090		
* 78300200	RAISED REFLECTIVE PAVEMENT MARKER REMOVAL	EACH	1,090	1,090		
* 81028200	UNDERGROUND CONDUIT, GALVANIZED STEEL, 2" DIA.	FOOT	128			128
* 85000200	MAINTENANCE OF EXISTING TRAFFIC SIGNAL INSTALLATION	EACH	7			7
* 87301215	ELECTRIC CABLE IN CONDUIT, SIGNAL NO. 14 2C	FOOT	1,741			1,741
* 87301900	ELECTRIC CABLE IN CONDUIT, EQUIPMENT GROUNDING CONDUCTOR, NO. 6 1C	FOOT	194			194
* 87900200	DRILL EXISTING HANDHOLE	EACH	12			12
* 88600100	DETECTOR LOOP, TYPE I	FOOT	2459			2459
* 89500200	RELOCATE EXISTING PEDESTRIAN SIGNAL HEAD	EACH	3			3
* 89502200	MODIFY EXISTING CONTROLLER	EACH	5			5
* 89502300	REMOVE ELECTRIC CABLE FROM CONDUIT	FOOT	120	120		
* 89502350	REMOVE AND REINSTALL ELECTRIC CABLE FROM CONDUIT	FOOT	387			387
* 89502375	REMOVE EXISTING TRAFFIC SIGNAL EQUIPMENT	EACH	7			7
* 89502376	REBUILD EXISTING HANDHOLE	EACH	12	12		
X0320050	CONSTRUCTION LAYOUT (SPECIAL)	L SUM	1	1		

* = SPECIALITY ITEM

PAY ITEM NUMBER	DESIGNATION	UNIT	URBAN			
			TOTAL QUANTITY	CONSTRUCTION CODE		
				0005	0021	
			80% FEDERAL 20% STATE	100% STATE	80% FEDERAL 20% STATE	
X0327611	REMOVE AND REINSTALL BRICK PAVER	SQ FT	2,840	2,840		
* X1400367	PEDESTRIAN SIGNAL POST, 10 FT.	EACH	2			2
X1400378	PEDESTRIAN SIGNAL POST, 5 FT.	EACH	9			9
X4240800	DETECTABLE WARNINGS (SPECIAL)	SQ FT	470	470		
X4400501	COMBINATION CURB AND GUTTER REMOVAL AND REPLACEMENT LESS THAN OR EQUAL TO 10 FEET	FOOT	206	206		
X4400503	COMBINATION CURB AND GUTTER REMOVAL AND REPLACEMENT GREATER THAN 10 FEET	FOOT	2,552	2,552		
X5537800	STORM SEWERS TO BE CLEANED 12"	FOOT	2,140			2,140
X6030310	FRAMES AND LIDS TO BE ADJUSTED (SPECIAL)	EACH	346	346		
X6700407	ENGINEER'S FIELD OFFICE, TYPE A (D1)	CAL MO	12	12		
* X8760200	ACCESSIBLE PEDESTRIAN SIGNALS	EACH	48			48
* X8780012	CONCRETE FOUNDATION, TYPE A 12-INCH DIAMETER	FOOT	48			48
Z0018500	DRAINAGE STRUCTURES TO BE CLEANED	EACH	145			145
Z0030850	TEMPORARY INFORMATION SIGNING	SQ FT	800	800		
* Z0033044	RE-OPTIMIZE TRAFFIC SIGNAL SYSTEM LEVEL 1	EACH	5			5
* X1400516	IN-ROADWAY WARNING LIGHTS REMOVAL	EACH	25	25		
Z0076600	TRAINEES	HOURS	500	500		
Z0076604	TRAINEES - TRAINING PROGRAM GRADUATE	HOURS	500	500		



USER NAME = ChiSengCheong
 PLOT SCALE = 2.0000' / in.
 PLOT DATE = 11/18/2022

DESIGNED - SSM
 DRAWN - KLN
 CHECKED - MM
 DATE - 11/18/2022

REVISED -
 REVISED -
 REVISED -
 REVISED -

STATE OF ILLINOIS
 DEPARTMENT OF TRANSPORTATION

SUMMARY OF QUANTITIES
 ROOSEVELT RD (DES PLAINES AVE TO BELT RAILWAY)

SCALE: NTS SHEET 2 OF 2 SHEETS STA. TO STA.

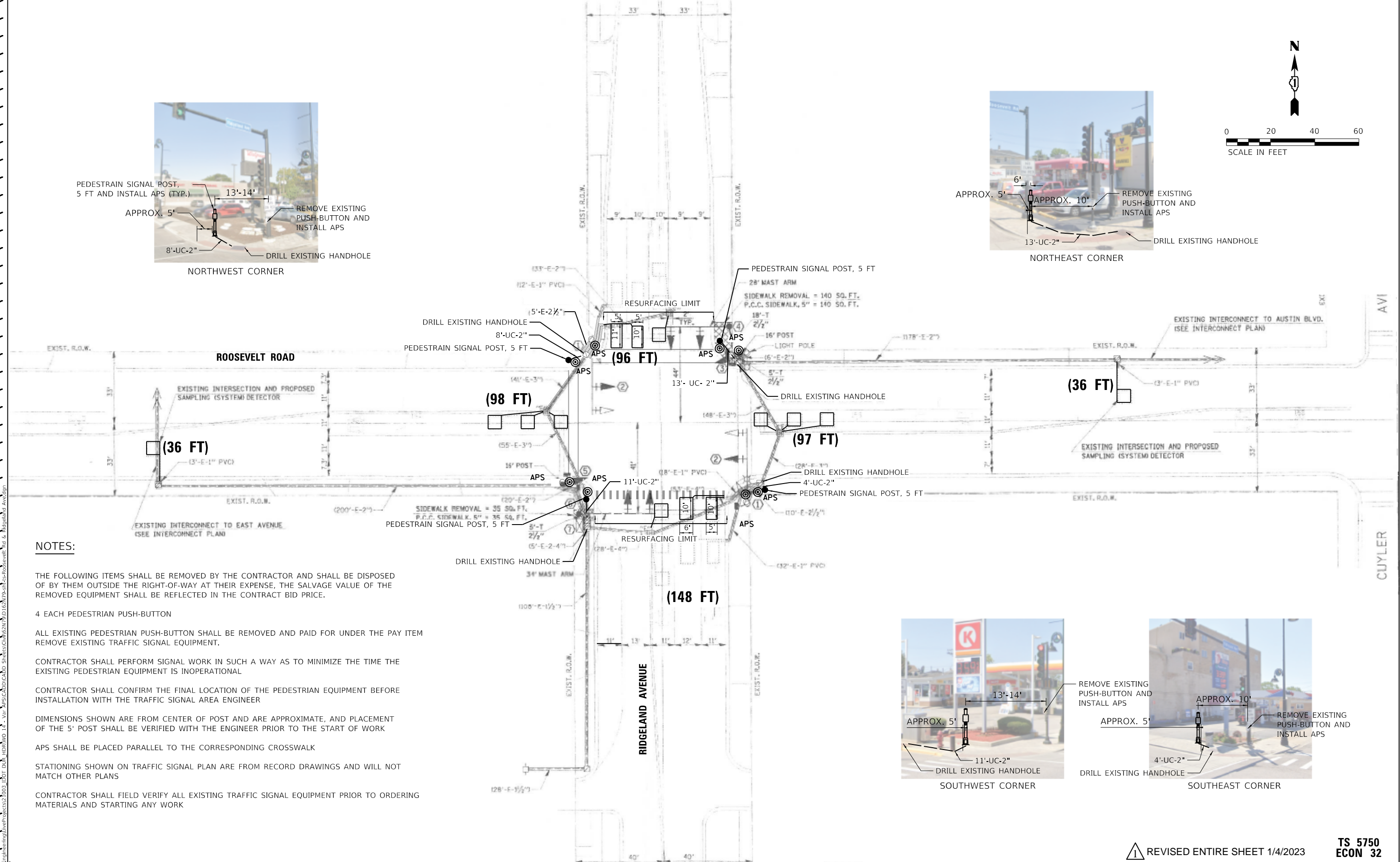
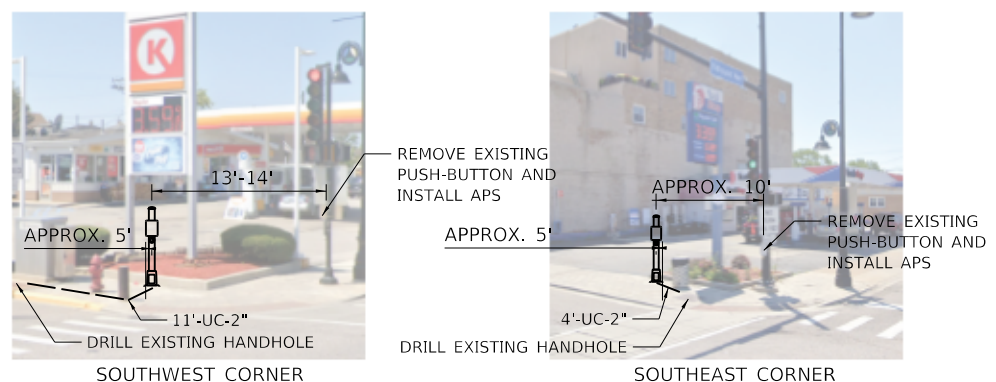
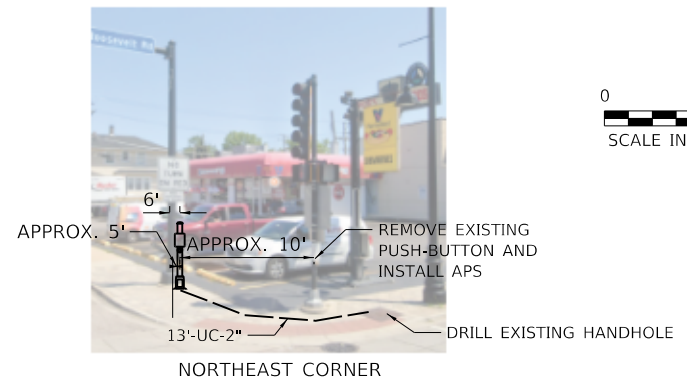
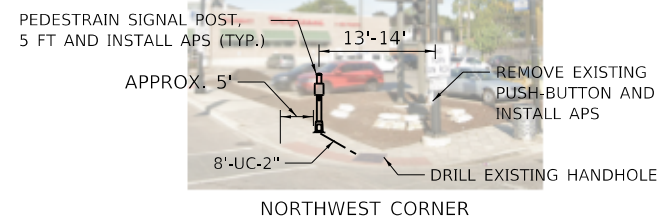
F.A.P. RTE.	SECTION	COUNTY	TOTAL SHEETS	SHEET NO.
347	2021-047-R5	COOK	97	4
ILLINOIS FED. AID PROJECT			CONTRACT NO. 62N79	

0042

REV-SEP



0 20 40 60
SCALE IN FEET



NOTES:

THE FOLLOWING ITEMS SHALL BE REMOVED BY THE CONTRACTOR AND SHALL BE DISPOSED OF BY THEM OUTSIDE THE RIGHT-OF-WAY AT THEIR EXPENSE, THE SALVAGE VALUE OF THE REMOVED EQUIPMENT SHALL BE REFLECTED IN THE CONTRACT BID PRICE.

4 EACH PEDESTRIAN PUSH-BUTTON

ALL EXISTING PEDESTRIAN PUSH-BUTTON SHALL BE REMOVED AND PAID FOR UNDER THE PAY ITEM REMOVE EXISTING TRAFFIC SIGNAL EQUIPMENT.

CONTRACTOR SHALL PERFORM SIGNAL WORK IN SUCH A WAY AS TO MINIMIZE THE TIME THE EXISTING PEDESTRIAN EQUIPMENT IS INOPERATIONAL

CONTRACTOR SHALL CONFIRM THE FINAL LOCATION OF THE PEDESTRIAN EQUIPMENT BEFORE INSTALLATION WITH THE TRAFFIC SIGNAL AREA ENGINEER

DIMENSIONS SHOWN ARE FROM CENTER OF POST AND ARE APPROXIMATE, AND PLACEMENT OF THE 5' POST SHALL BE VERIFIED WITH THE ENGINEER PRIOR TO THE START OF WORK

APS SHALL BE PLACED PARALLEL TO THE CORRESPONDING CROSSWALK

STATIONING SHOWN ON TRAFFIC SIGNAL PLAN ARE FROM RECORD DRAWINGS AND WILL NOT MATCH OTHER PLANS

CONTRACTOR SHALL FIELD VERIFY ALL EXISTING TRAFFIC SIGNAL EQUIPMENT PRIOR TO ORDERING MATERIALS AND STARTING ANY WORK

TS SHT NO. 8



USER NAME = jdavls	DESIGNED - MA	REVISED - 01/03/2022 JJD
DRAWN - MA	REVISIONS -	
PLOT SCALE = 40,0000' / in.	CHECKED - JJD	REVISIONS -
PLOT DATE = 12/30/2022	DATE - 11-18-2022	REVISIONS -

**STATE OF ILLINOIS
DEPARTMENT OF TRANSPORTATION**

**ROOSEVELT RD AND RIDGELAND AVE
APS AND DETECTOR LOOP REPLACEMENT PLAN**

SCALE: 1" = 20'
SHEET 1 OF 14 SHEETS STA. TO STA.

F.A.P. RTE. 347	SECTION 2021-047-RS	COUNTY COOK	TOTAL SHEETS 97	SHEET NO. 66
CONTRACT NO. 62N79				
ILLINOIS FED. AID PROJECT				

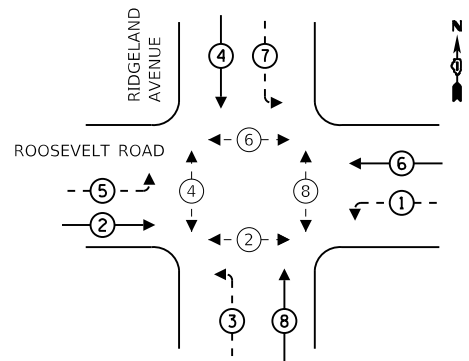
REVISION 1 REVISED ENTIRE SHEET 1/4/2023

**TS 5750
ECON 32**

SCHEDULE OF QUANTITIES

ITEM DESCRIPTION	UNIT	TOTAL QTY
UNDERGROUND CONDUIT, GALVANIZED STEEL, 2" DIA	FOOT	36
MAINTENANCE OF EXISTING TRAFFIC SIGNAL INSTALLATION	EACH	1
ELECTRIC CABLE IN CONDUIT, SIGNAL NO. 14 2C	FOOT	553
ELECTRIC CABLE IN CONDUIT, EQUIPMENT GROUNDING CONDUCTOR, NO. 6 1C	EACH	62
DRILL EXISTING HANDHOLE	EACH	4
DETECTOR LOOP, TYPE 1	FOOT	473
MODIFY EXISTING CONTROLLER	EACH	1
REMOVE EXISTING TRAFFIC SIGNAL EQUIPMENT	EACH	1
PEDESTRIAN SIGNAL POST, 5 FT.	EACH	4
ACCESSIBLE PEDESTRIAN SIGNALS	EACH	8
CONCRETE FOUNDATION, TYPE A, 12 INCH DIA.	FOOT	16
RE-OPTIMIZE TRAFFIC SIGNAL SYSTEM LEVEL 1	EACH	1

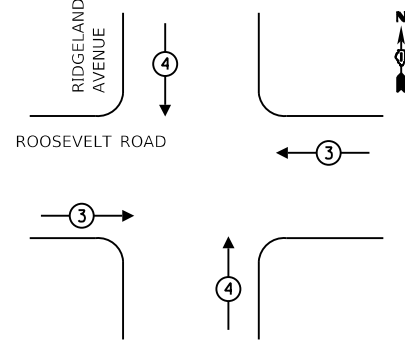
EXISTING CONTROLLER SEQUENCE



LEGEND

- ← * → DUAL ENTRY PHASE
- ← * → PEDESTRIAN PHASE
- ← * → OL OVERLAP
- * REFERS TO ASSOCIATED PHASE

EXISTING PHASE DESIGNATION DIAGRAM



EXISTING EMERGENCY VEHICLE PREEMPTION SEQUENCE

EMERGENCY VEHICLE PREEMPTOR	3	4
MOVEMENT	← →	↓ ↑

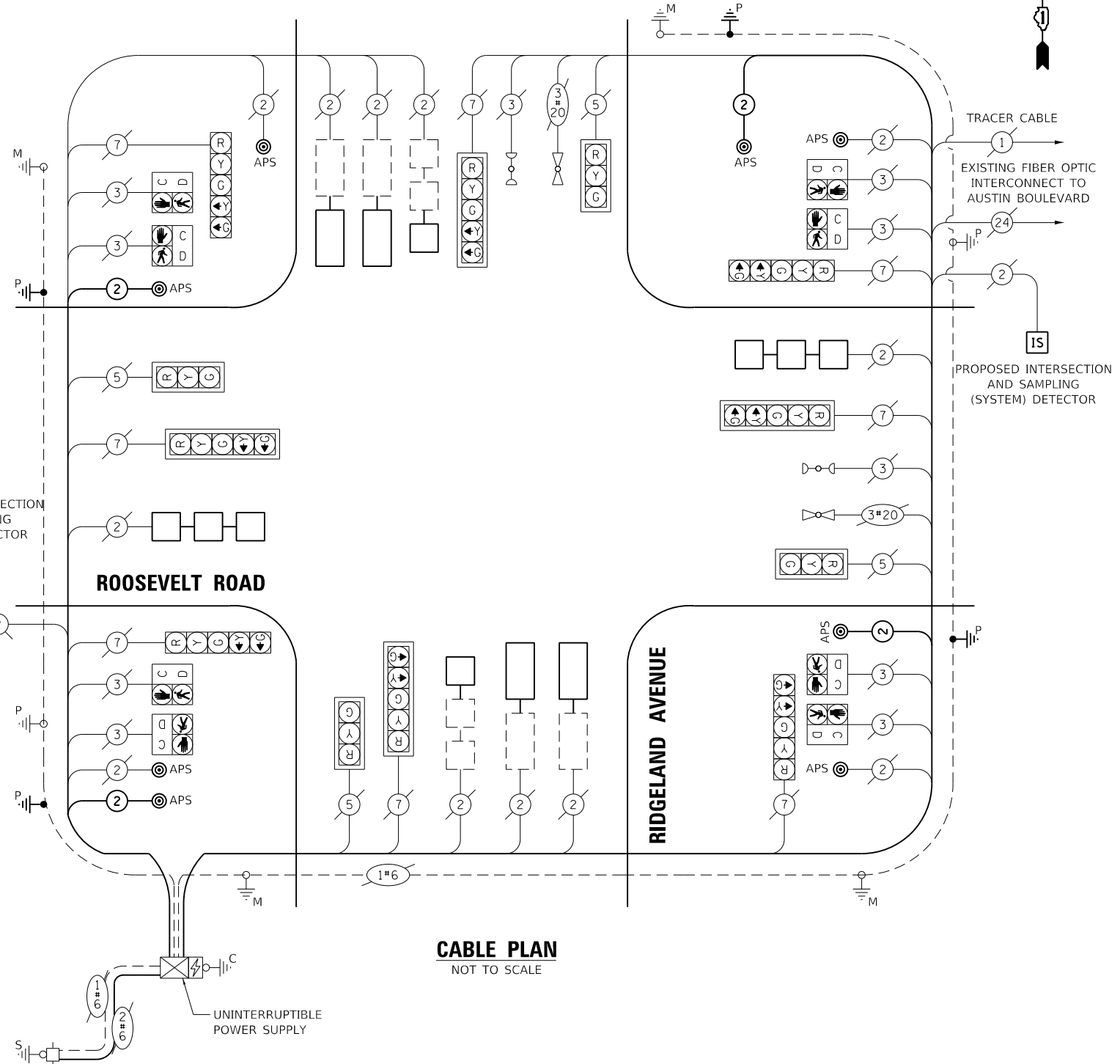
TRAFFIC SIGNAL ELECTRICAL SERVICE REQUIREMENTS

TYPE	NO. OF LAMPS	LED WATTAGE	% OPERATION	TOTAL WATTAGE
SIGNAL (RED)	12	17	50	102
(YELLOW)	12	25	25	75
(GREEN)	12	15	25	45
ARROW (YELLOW)	8	12	10	10
(GREEN)	8	12	10	10
PED. SIGNAL	8	25	100	200
CONTROLLER	1	100	100	100
UPS	1	25	100	25
ILLUM. SIGN		100	50	
FLASHER		25	50	
TOTAL =				567

ENERGY COSTS TO:
 ILLINOIS DEPARTMENT OF TRANSPORTATION
 201 W. CENTER CT
 SCHAUMBURG, IL 60196

ENERGY SUPPLY: CONTACT: JOE STACHO
 PHONE: (630) 424-5704
 COMPANY: COMMONWEALTH EDISON
 ACCOUNT NUMBER: 18231-38139

PROPOSED INTERSECTION AND SAMPLING (SYSTEM) DETECTOR



CABLE PLAN
NOT TO SCALE

TS SHT NO. 9



USER NAME = jdvavls	DESIGNED - PV	REVISED - 01/03/2022 JJD
PLOT SCALE = 100,0000' / in.	DRAWN - PV	REVISED -
PLOT DATE = 12/30/2022	CHECKED - JJD	REVISED -
	DATE - 11-18-2022	REVISED -

**STATE OF ILLINOIS
DEPARTMENT OF TRANSPORTATION**

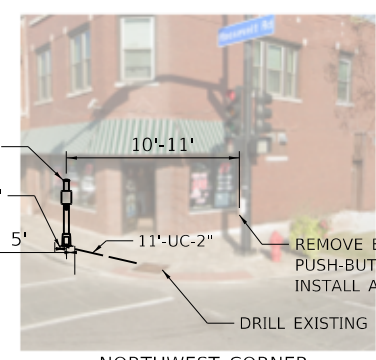
**ROOSEVELT RD AND RIDGELAND AVE
APS AND DETECTOR LOOP REPLACEMENT PLAN**

SCALE: 1" = 50' SHEET 2 OF 14 SHEETS STA. TO STA.

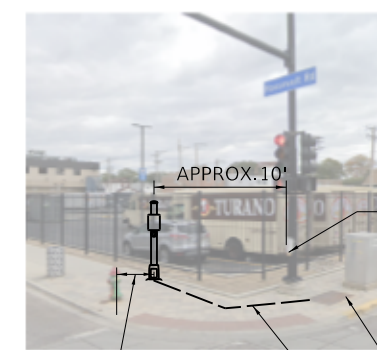
REVISD ENTIRE SHEET 1/4/2023

TS 5750
ECON 32

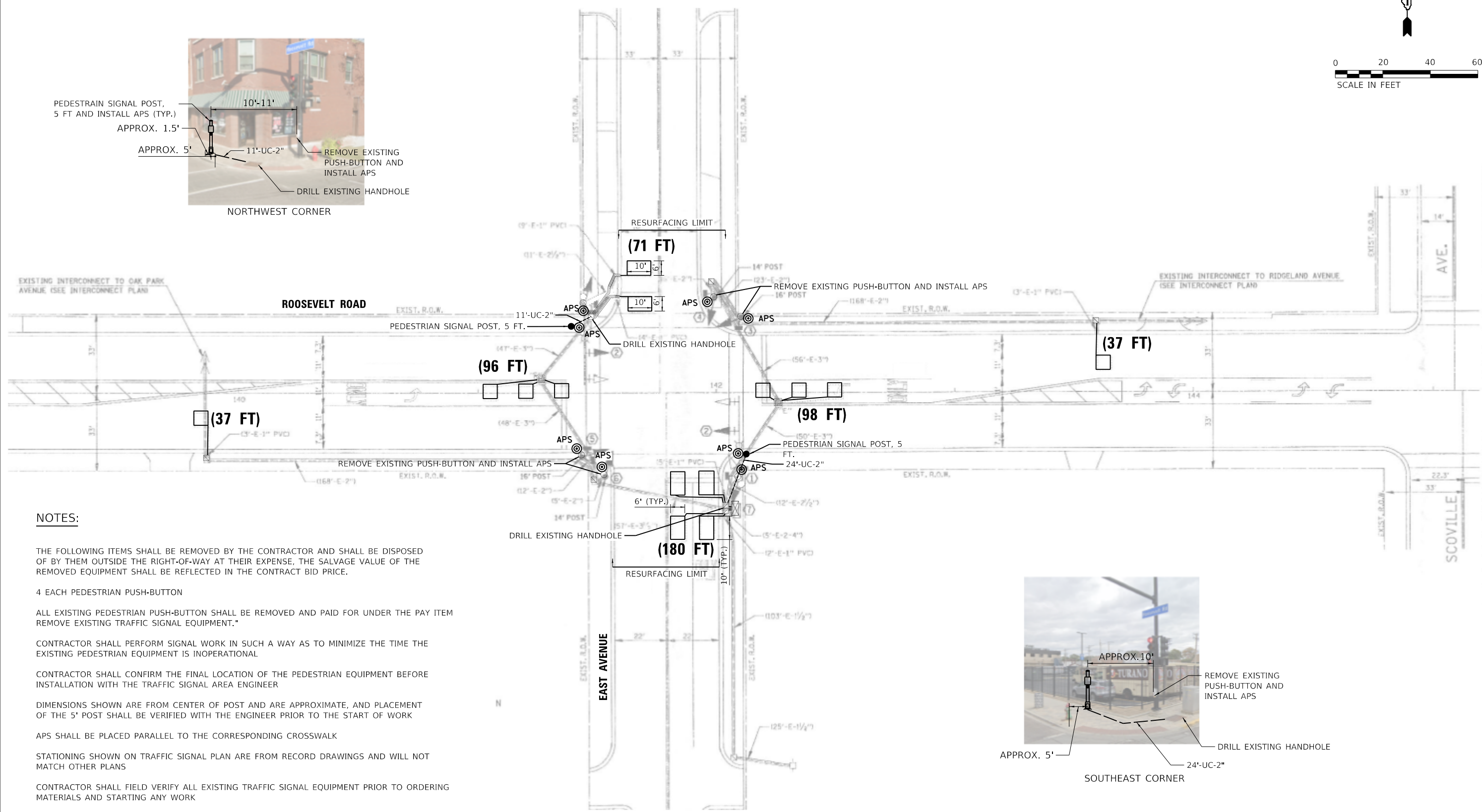
F.A.P. RTE.	SECTION	COUNTY	TOTAL SHEETS	SHEET NO.
347	2021-047-RS	COOK	97	67
CONTRACT NO. 62N79				
ILLINOIS FED. AID PROJECT				



PEDESTRIAN SIGNAL POST, 5 FT AND INSTALL APS (TYP.)
 APPROX. 1.5'
 APPROX. 5'
 10'-11"
 11'-UC-2"
 REMOVE EXISTING PUSH-BUTTON AND INSTALL APS
 DRILL EXISTING HANDHOLE
 NORTHWEST CORNER



APPROX. 10'
 REMOVE EXISTING PUSH-BUTTON AND INSTALL APS
 DRILL EXISTING HANDHOLE
 APPROX. 5'
 24'-UC-2"
 SOUTHEAST CORNER



NOTES:

- THE FOLLOWING ITEMS SHALL BE REMOVED BY THE CONTRACTOR AND SHALL BE DISPOSED OF BY THEM OUTSIDE THE RIGHT-OF-WAY AT THEIR EXPENSE, THE SALVAGE VALUE OF THE REMOVED EQUIPMENT SHALL BE REFLECTED IN THE CONTRACT BID PRICE.
- 4 EACH PEDESTRIAN PUSH-BUTTON
- ALL EXISTING PEDESTRIAN PUSH-BUTTON SHALL BE REMOVED AND PAID FOR UNDER THE PAY ITEM REMOVE EXISTING TRAFFIC SIGNAL EQUIPMENT.*
- CONTRACTOR SHALL PERFORM SIGNAL WORK IN SUCH A WAY AS TO MINIMIZE THE TIME THE EXISTING PEDESTRIAN EQUIPMENT IS INOPERATIONAL
- CONTRACTOR SHALL CONFIRM THE FINAL LOCATION OF THE PEDESTRIAN EQUIPMENT BEFORE INSTALLATION WITH THE TRAFFIC SIGNAL AREA ENGINEER
- DIMENSIONS SHOWN ARE FROM CENTER OF POST AND ARE APPROXIMATE, AND PLACEMENT OF THE 5' POST SHALL BE VERIFIED WITH THE ENGINEER PRIOR TO THE START OF WORK
- APS SHALL BE PLACED PARALLEL TO THE CORRESPONDING CROSSWALK
- STATIONING SHOWN ON TRAFFIC SIGNAL PLAN ARE FROM RECORD DRAWINGS AND WILL NOT MATCH OTHER PLANS
- CONTRACTOR SHALL FIELD VERIFY ALL EXISTING TRAFFIC SIGNAL EQUIPMENT PRIOR TO ORDERING MATERIALS AND STARTING ANY WORK

TS SHT NO. 10



USER NAME = jdavls	DESIGNED - PV	REVISED - 01/03/2022 JJD
PLOT SCALE = 40.0000' / in.	DRAWN - PV	REVISED -
PLOT DATE = 12/30/2022	CHECKED - JJD	REVISED -
	DATE - 11-18-2022	REVISED -

STATE OF ILLINOIS
 DEPARTMENT OF TRANSPORTATION

Roosevelt Rd and East Ave
 APS and Detector Loop Replacement Plan
 SCALE: 1" = 20' SHEET 3 OF 14 SHEETS STA. TO STA.

F.A.P. RTE. 347	SECTION 2021-047-RS	COUNTY COOK	TOTAL SHEETS 97	SHEET NO. 68
CONTRACT NO. 62N79				
ILLINOIS FED. AID PROJECT				

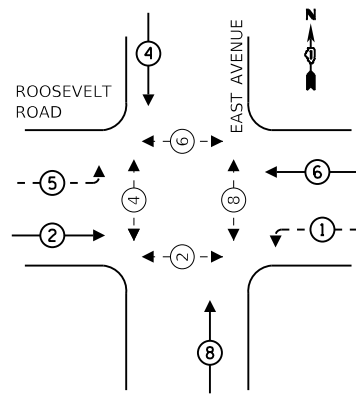
REVISD ENTIRE SHEET 1/4/2023

TS 5735
 ECON 32

SCHEDULE OF QUANTITIES

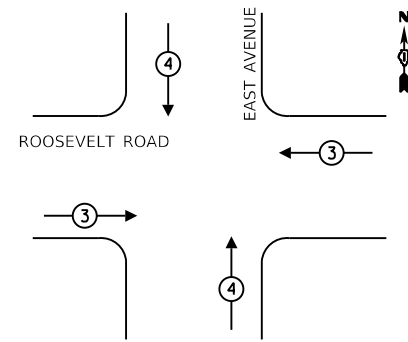
ITEM DESCRIPTION	UNIT	TOTAL QTY
UNDERGROUND CONDUIT, GALVANIZED STEEL, 2" DIA	FOOT	35
MAINTENANCE OF EXISTING TRAFFIC SIGNAL INSTALLATION	EACH	1
ELECTRIC CABLE IN CONDUIT, SIGNAL NO. 14 2C	FOOT	273
ELECTRIC CABLE IN CONDUIT, EQUIPMENT GROUNDING CONDUCTOR, NO. 6 1C	EACH	48
DRILL EXISTING HANDHOLE	EACH	2
DETECTOR LOOP, TYPE 1	FOOT	519
MODIFY EXISTING CONTROLLER	EACH	1
REMOVE EXISTING TRAFFIC SIGNAL EQUIPMENT	EACH	1
PEDESTRIAN SIGNAL POST, 5 FT.	EACH	2
ACCESSIBLE PEDESTRIAN SIGNALS	EACH	8
CONCRETE FOUNDATION, TYPE A, 12 INCH DIA.	FOOT	8
RE-OPTIMIZE TRAFFIC SIGNAL SYSTEM LEVEL 1	EACH	1

EXISTING CONTROLLER SEQUENCE



- LEGEND**
- ← * → DUAL ENTRY PHASE
 - ← * → PEDESTRIAN PHASE
 - ← * OL → OVERLAP
 - * REFERS TO ASSOCIATED PHASE

EXISTING PHASE DESIGNATION DIAGRAM



EXISTING EMERGENCY VEHICLE PREEMPTION SEQUENCE

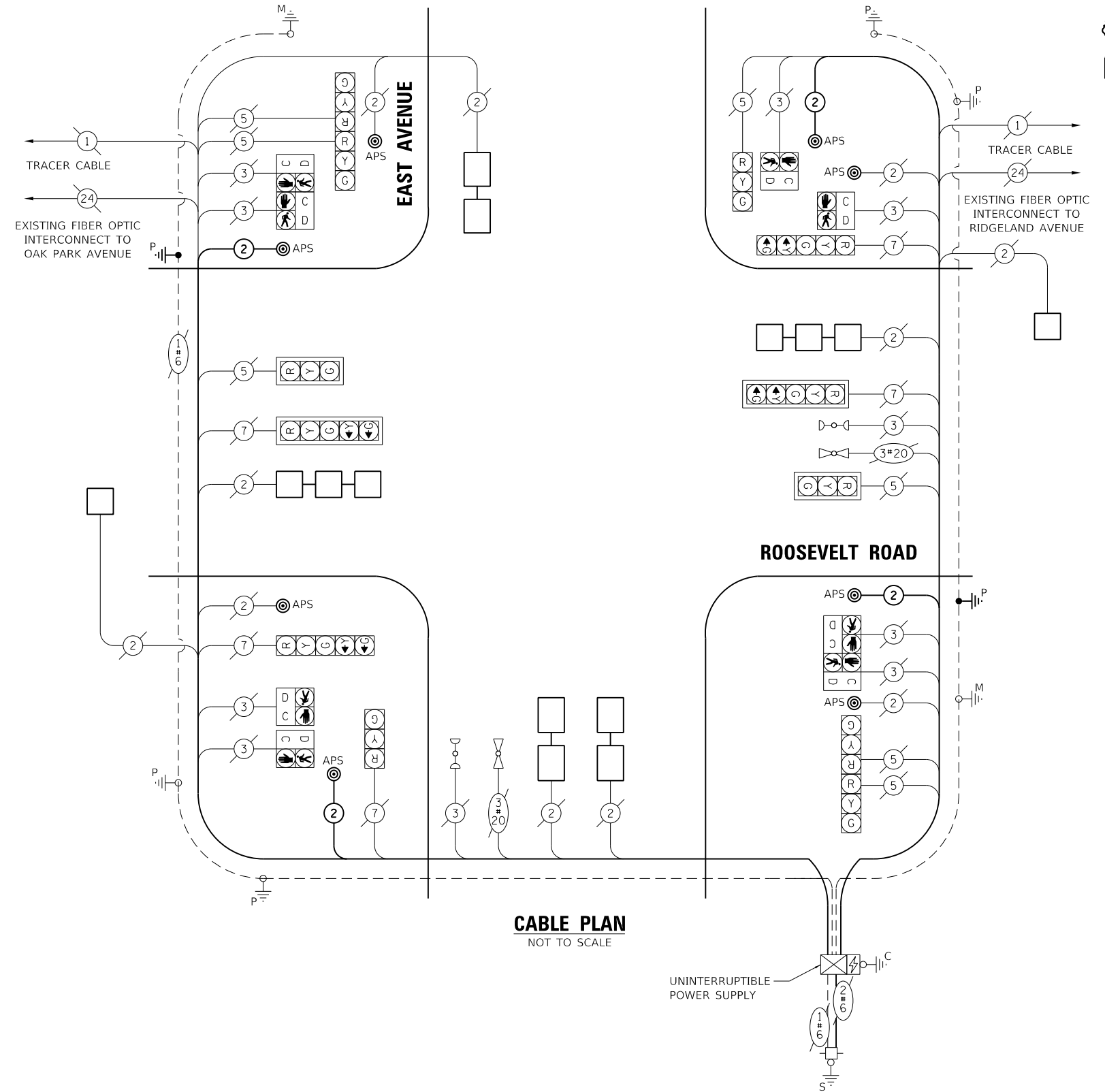
EMERGENCY VEHICLE PREEMPTOR	3	4
MOVEMENT	← →	↓ ↑

TRAFFIC SIGNAL ELECTRICAL SERVICE REQUIREMENTS

TYPE	NO. OF LAMPS	LED WATTAGE	% OPERATION	TOTAL WATTAGE
SIGNAL (RED)	12	17	50	102
(YELLOW)	12	25	25	75
(GREEN)	16	15	25	60
ARROW (YELLOW)	4	12	10	5
(GREEN)	4	12	10	5
PED. SIGNAL	8	25	100	200
CONTROLLER	1	100	100	100
UPS	1	25	100	25
ILLUM. SIGN		100	50	
FLASHER		25	50	
TOTAL =				572

ENERGY COSTS TO:
VILLAGE OF OAK PARK
 123 MADISON ST
 OAK PARK, IL 60302

ENERGY SUPPLY: CONTACT: JOE STACHO
 PHONE: (630) 424-5704
 COMPANY: COMMONWEALTH EDISON
 ACCOUNT NUMBER: 79250-28009



CABLE PLAN
NOT TO SCALE

UNINTERRUPTIBLE POWER SUPPLY

TS SHT NO. 11



USER NAME = jdvavls	DESIGNED - PV	REVISED - 01/03/2022 JJD
PLOT SCALE = 100,0000' / in.	DRAWN - PV	REVISED -
PLOT DATE = 12/30/2022	CHECKED - JJD	REVISED -
	DATE - 11-18-2022	REVISED -

STATE OF ILLINOIS
DEPARTMENT OF TRANSPORTATION

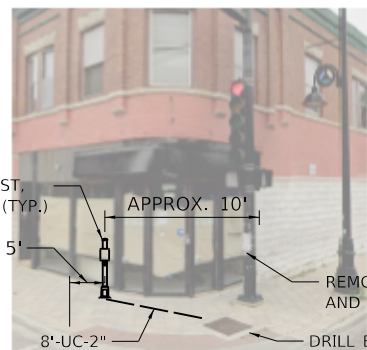
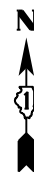
ROOSEVELT RD AND EAST AVE
APS AND DETECTOR LOOP REPLACEMENT PLAN

SCALE: 1" = 50' SHEET 4 OF 14 SHEETS STA. TO STA.

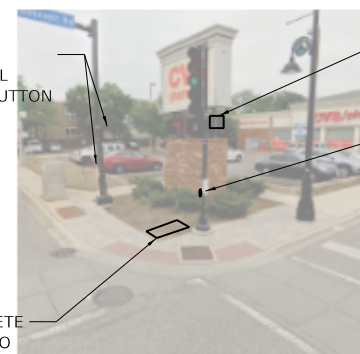
F.A.P. RTE. 347	SECTION 2021-047-RS	COUNTY COOK	TOTAL SHEETS 97	SHEET NO. 69
CONTRACT NO. 62N79			ILLINOIS FED. AID PROJECT	

REVISI 1 REVISI 2 REVISI 3 REVISI 4 REVISI 5 REVISI 6 REVISI 7 REVISI 8 REVISI 9 REVISI 10 REVISI 11 REVISI 12 REVISI 13 REVISI 14 REVISI 15 REVISI 16 REVISI 17 REVISI 18 REVISI 19 REVISI 20 REVISI 21 REVISI 22 REVISI 23 REVISI 24 REVISI 25 REVISI 26 REVISI 27 REVISI 28 REVISI 29 REVISI 30 REVISI 31 REVISI 32 REVISI 33 REVISI 34 REVISI 35 REVISI 36 REVISI 37 REVISI 38 REVISI 39 REVISI 40 REVISI 41 REVISI 42 REVISI 43 REVISI 44 REVISI 45 REVISI 46 REVISI 47 REVISI 48 REVISI 49 REVISI 50 REVISI 51 REVISI 52 REVISI 53 REVISI 54 REVISI 55 REVISI 56 REVISI 57 REVISI 58 REVISI 59 REVISI 60 REVISI 61 REVISI 62 REVISI 63 REVISI 64 REVISI 65 REVISI 66 REVISI 67 REVISI 68 REVISI 69 REVISI 70 REVISI 71 REVISI 72 REVISI 73 REVISI 74 REVISI 75 REVISI 76 REVISI 77 REVISI 78 REVISI 79 REVISI 80 REVISI 81 REVISI 82 REVISI 83 REVISI 84 REVISI 85 REVISI 86 REVISI 87 REVISI 88 REVISI 89 REVISI 90 REVISI 91 REVISI 92 REVISI 93 REVISI 94 REVISI 95 REVISI 96 REVISI 97 REVISI 98 REVISI 99 REVISI 100

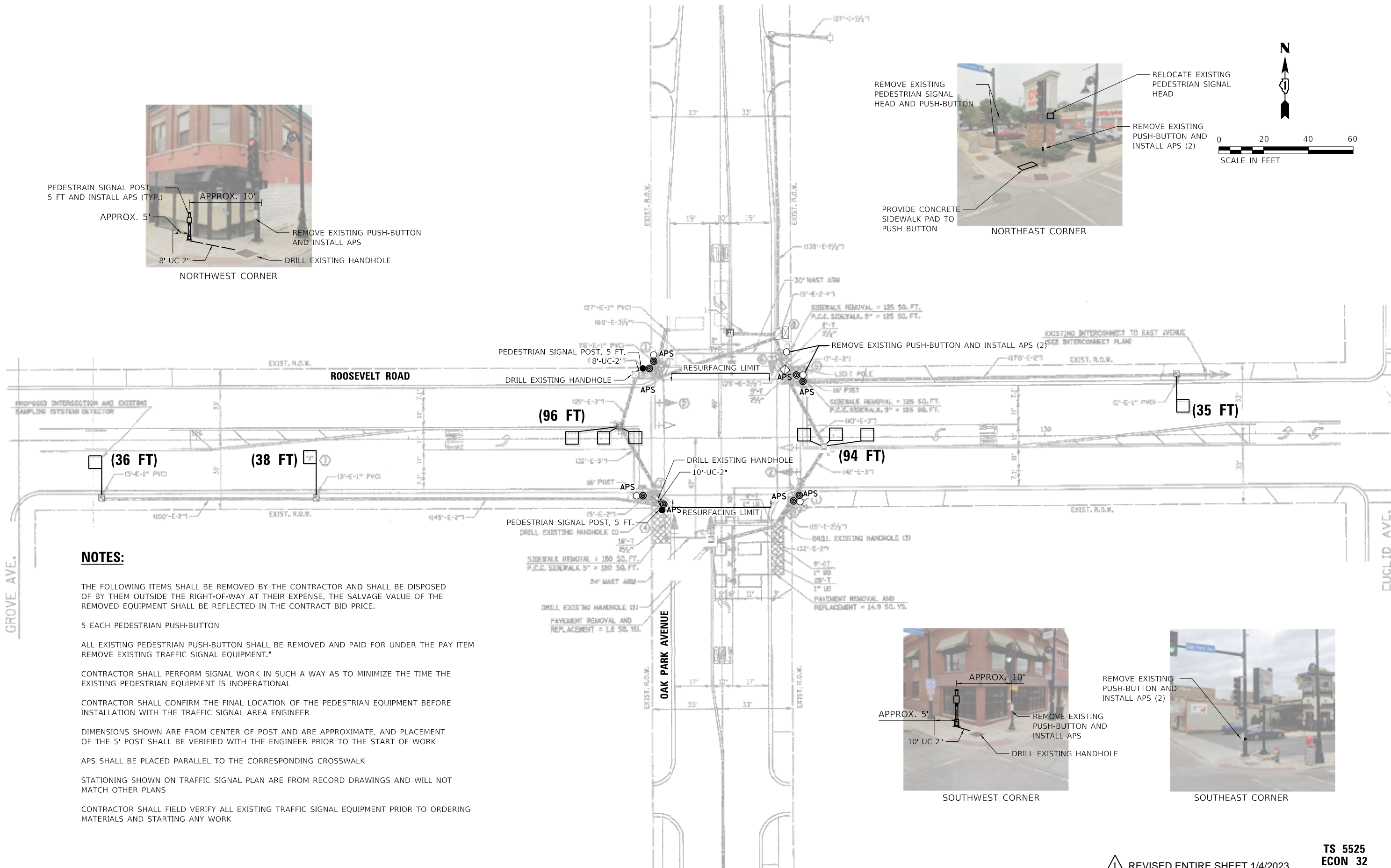
TS 5735
ECON 32



PEDESTRIAN SIGNAL POST, 5 FT AND INSTALL APS (TYP.)
 APPROX. 10'
 APPROX. 5'
 REMOVE EXISTING PUSH-BUTTON AND INSTALL APS
 8'-UC-2"
 DRILL EXISTING HANDHOLE
 NORTHWEST CORNER



REMOVE EXISTING PEDESTRIAN SIGNAL HEAD AND PUSH-BUTTON
 RELOCATE EXISTING PEDESTRIAN SIGNAL HEAD
 REMOVE EXISTING PUSH-BUTTON AND INSTALL APS (2)
 PROVIDE CONCRETE SIDEWALK PAD TO PUSH BUTTON
 NORTHEAST CORNER



NOTES:

THE FOLLOWING ITEMS SHALL BE REMOVED BY THE CONTRACTOR AND SHALL BE DISPOSED OF BY THEM OUTSIDE THE RIGHT-OF-WAY AT THEIR EXPENSE. THE SALVAGE VALUE OF THE REMOVED EQUIPMENT SHALL BE REFLECTED IN THE CONTRACT BID PRICE.

5 EACH PEDESTRIAN PUSH-BUTTON

ALL EXISTING PEDESTRIAN PUSH-BUTTON SHALL BE REMOVED AND PAID FOR UNDER THE PAY ITEM REMOVE EXISTING TRAFFIC SIGNAL EQUIPMENT."

CONTRACTOR SHALL PERFORM SIGNAL WORK IN SUCH A WAY AS TO MINIMIZE THE TIME THE EXISTING PEDESTRIAN EQUIPMENT IS INOPERATIONAL

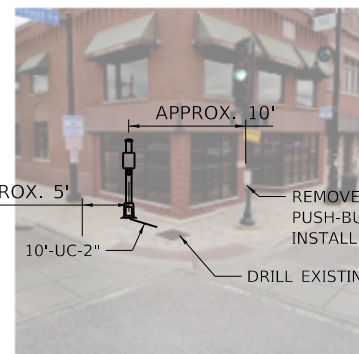
CONTRACTOR SHALL CONFIRM THE FINAL LOCATION OF THE PEDESTRIAN EQUIPMENT BEFORE INSTALLATION WITH THE TRAFFIC SIGNAL AREA ENGINEER

DIMENSIONS SHOWN ARE FROM CENTER OF POST AND ARE APPROXIMATE, AND PLACEMENT OF THE 5' POST SHALL BE VERIFIED WITH THE ENGINEER PRIOR TO THE START OF WORK

APS SHALL BE PLACED PARALLEL TO THE CORRESPONDING CROSSWALK

STATIONING SHOWN ON TRAFFIC SIGNAL PLAN ARE FROM RECORD DRAWINGS AND WILL NOT MATCH OTHER PLANS

CONTRACTOR SHALL FIELD VERIFY ALL EXISTING TRAFFIC SIGNAL EQUIPMENT PRIOR TO ORDERING MATERIALS AND STARTING ANY WORK



APPROX. 10'
 APPROX. 5'
 10'-UC-2"
 DRILL EXISTING HANDHOLE
 REMOVE EXISTING PUSH-BUTTON AND INSTALL APS
 SOUTHWEST CORNER



REMOVE EXISTING PUSH-BUTTON AND INSTALL APS (2)
 SOUTHEAST CORNER

TS SHT NO. 12



USER NAME = jdvails	DESIGNED - IH	REVISED - 01/03/2022 JJD
PLOT SCALE = 40.0000' / in.	DRAWN - IH	REVISED -
PLOT DATE = 12/30/2022	CHECKED - JJD	REVISED -
	DATE - 11-18-2022	REVISED -

STATE OF ILLINOIS
 DEPARTMENT OF TRANSPORTATION

Roosevelt Rd and Oak Park Ave
 APS and Detector Loop Replacement Plan

SCALE: 1" = 20' SHEET 5 OF 14 SHEETS STA. TO STA.

REVISION 1/4/2023

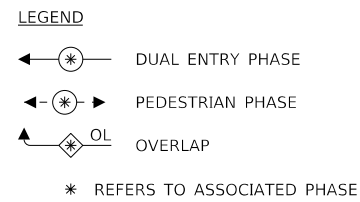
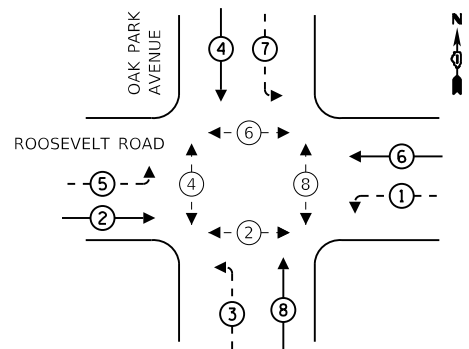
F.A.P. RTE. 347	SECTION 2021-047-RS	COUNTY COOK	TOTAL SHEETS 97	SHEET NO. 70
CONTRACT NO. 62N79				
ILLINOIS FED. AID PROJECT				

TS 5525
 ECON 32

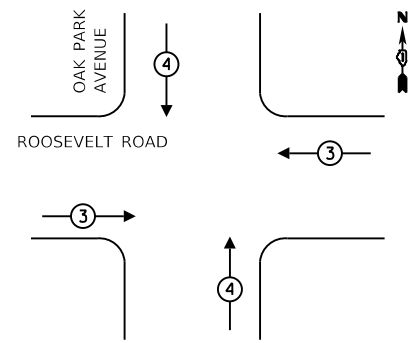
SCHEDULE OF QUANTITIES

ITEM DESCRIPTION	UNIT	TOTAL QTY
UNDERGROUND CONDUIT, GALVANIZED STEEL, 2" DIA	FOOT	18
MAINTENANCE OF EXISTING TRAFFIC SIGNAL INSTALLATION	EACH	1
ELECTRIC CABLE IN CONDUIT, SIGNAL NO. 14 2C	FOOT	579
ELECTRIC CABLE IN CONDUIT, EQUIPMENT GROUNDING CONDUCTOR, NO. 6 1C	FOOT	31
DRILL EXISTING HANDHOLE	EACH	2
DETECTOR LOOP, TYPE 1	FOOT	299
RELOCATE EXISTING PEDESTRIAN SIGNAL HEAD	EACH	1
MODIFY EXISTING CONTROLLER	EACH	1
REMOVE AND REINSTALL ELECTRIC CABLE FROM CONDUIT (NO.14 3C)	FOOT	230
REMOVE EXISTING TRAFFIC SIGNAL EQUIPMENT	EACH	1
PEDESTRIAN SIGNAL POST, 5 FT.	EACH	2
ACCESSIBLE PEDESTRIAN SIGNALS	EACH	8
CONCRETE FOUNDATION, TYPE A, 12 INCH DIA.	FOOT	8
RE-OPTIMIZE TRAFFIC SIGNAL SYSTEM LEVEL 1	EACH	1

EXISTING CONTROLLER SEQUENCE



EXISTING PHASE DESIGNATION DIAGRAM



EXISTING EMERGENCY VEHICLE PREEMPTION SEQUENCE

EMERGENCY VEHICLE PREEMPTOR	3	4
MOVEMENT		

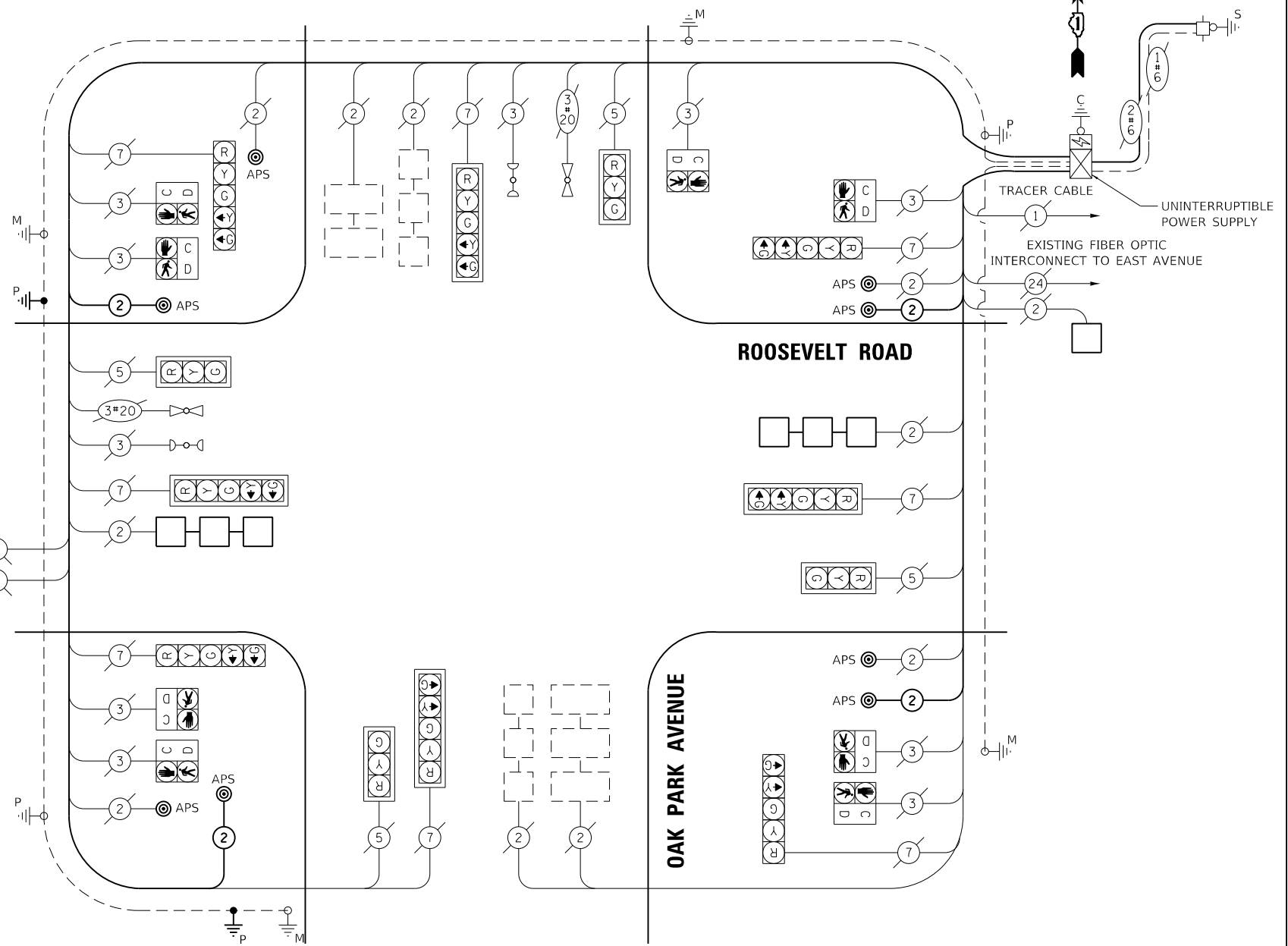
TRAFFIC SIGNAL ELECTRICAL SERVICE REQUIREMENTS

TYPE	NO. OF LAMPS	LED WATTAGE	% OPERATION	TOTAL WATTAGE
SIGNAL (RED)	12	17	50	102
(YELLOW)	12	25	25	75
(GREEN)	12	15	25	45
ARROW (YELLOW)	8	12	10	10
(GREEN)	8	12	10	10
PED. SIGNAL	8	25	100	100
CONTROLLER	1	100	100	100
UPS	1	25	100	25
ILLUM. SIGN		100	50	
FLASHER		25	50	
TOTAL =				467

ENERGY COSTS TO:

VILLAGE OF OAK PARK
123 MADISON ST
OAK PARK, IL 60302

ENERGY SUPPLY: CONTACT: JOE STACHO
PHONE: (630) 424-5704
COMPANY: COMMONWEALTH EDISON
ACCOUNT NUMBER: 79250-28009



CABLE PLAN
NOT TO SCALE

TS SHT NO. 13



USER NAME = jdvavls	DESIGNED - PV	REVISED - 01/03/2022 JJD
PLOT SCALE = 100,0000' / in.	DRAWN - PV	REVISED -
PLOT DATE = 12/30/2022	CHECKED - JJD	REVISED -
	DATE - 11-18-2022	REVISED -

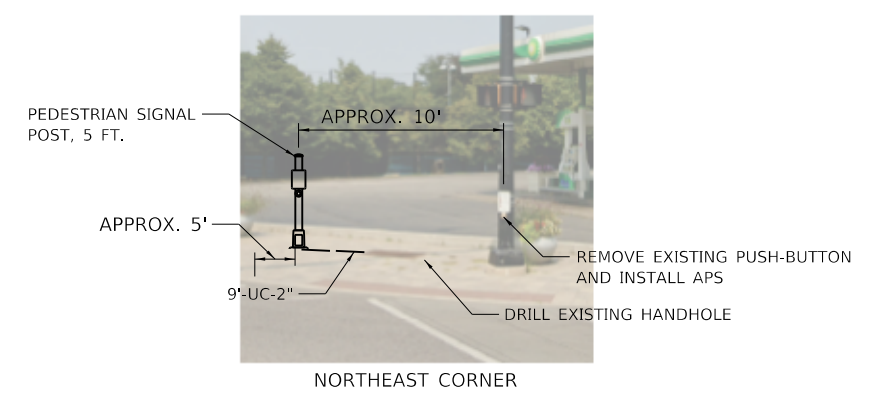
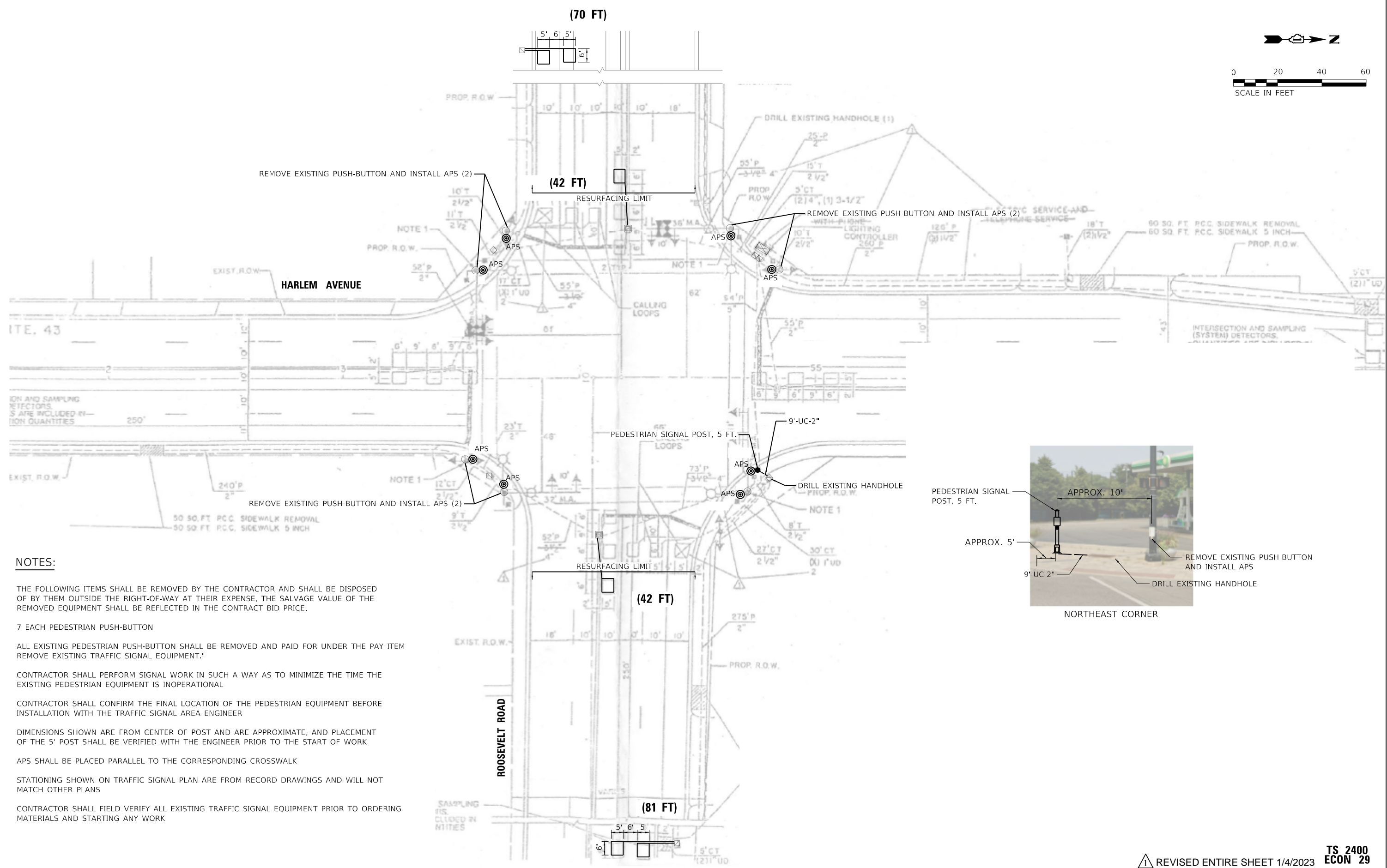
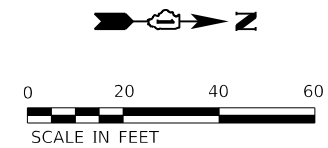
STATE OF ILLINOIS
DEPARTMENT OF TRANSPORTATION

ROOSEVELT RD AND OAK PARK AVE
APS AND DETECTOR LOOP REPLACEMENT PLAN

SCALE: 1" = 50' SHEET 6 OF 14 SHEETS STA. TO STA.

F.A.P. RTE. 347	SECTION 2021-047-RS	COUNTY COOK	TOTAL SHEETS 97	SHEET NO. 71
	CONTRACT NO. 62N79			
ILLINOIS FED. AID PROJECT				

REVISED ENTIRE SHEET 1/4/2023 TS 5525 ECON 32



NOTES:

- THE FOLLOWING ITEMS SHALL BE REMOVED BY THE CONTRACTOR AND SHALL BE DISPOSED OF BY THEM OUTSIDE THE RIGHT-OF-WAY AT THEIR EXPENSE, THE SALVAGE VALUE OF THE REMOVED EQUIPMENT SHALL BE REFLECTED IN THE CONTRACT BID PRICE.
- 7 EACH PEDESTRIAN PUSH-BUTTON
- ALL EXISTING PEDESTRIAN PUSH-BUTTON SHALL BE REMOVED AND PAID FOR UNDER THE PAY ITEM REMOVE EXISTING TRAFFIC SIGNAL EQUIPMENT."
- CONTRACTOR SHALL PERFORM SIGNAL WORK IN SUCH A WAY AS TO MINIMIZE THE TIME THE EXISTING PEDESTRIAN EQUIPMENT IS INOPERATIONAL
- CONTRACTOR SHALL CONFIRM THE FINAL LOCATION OF THE PEDESTRIAN EQUIPMENT BEFORE INSTALLATION WITH THE TRAFFIC SIGNAL AREA ENGINEER
- DIMENSIONS SHOWN ARE FROM CENTER OF POST AND ARE APPROXIMATE, AND PLACEMENT OF THE 5' POST SHALL BE VERIFIED WITH THE ENGINEER PRIOR TO THE START OF WORK
- APS SHALL BE PLACED PARALLEL TO THE CORRESPONDING CROSSWALK
- STATIONING SHOWN ON TRAFFIC SIGNAL PLAN ARE FROM RECORD DRAWINGS AND WILL NOT MATCH OTHER PLANS
- CONTRACTOR SHALL FIELD VERIFY ALL EXISTING TRAFFIC SIGNAL EQUIPMENT PRIOR TO ORDERING MATERIALS AND STARTING ANY WORK

TS SHT NO. 14



USER NAME = jldavls	DESIGNED - PV	REVISED - 01/03/2022 JJD
PLOT SCALE = 40.0000' / in.	DRAWN - PV	REVISED -
PLOT DATE = 12/30/2022	CHECKED - JJD	REVISED -
	DATE - 11-18-2022	REVISED -

**STATE OF ILLINOIS
DEPARTMENT OF TRANSPORTATION**

**ROOSEVELT RD AND HARLEM AVE
APS AND DETECTOR LOOP REPLACEMENT PLAN**

SCALE: 1" = 25' SHEET 7 OF 14 SHEETS STA. TO STA.

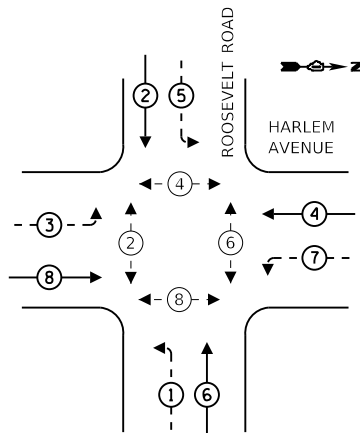
F.A.P. RTE. 347	SECTION 2021-047-RS	COUNTY COOK	TOTAL SHEETS 97	SHEET NO. 72
CONTRACT NO. 62N79			ILLINOIS FED. AID PROJECT	

REVISD ENTIRE SHEET 1/4/2023 TS 2400 ECON 29

SCHEDULE OF QUANTITIES

ITEM DESCRIPTION	UNIT	TOTAL QTY
UNDERGROUND CONDUIT, GALVANIZED STEEL, 2" DIA	FOOT	9
MAINTENANCE OF EXISTING TRAFFIC SIGNAL INSTALLATION	EACH	1
ELECTRIC CABLE IN CONDUIT, SIGNAL NO. 14 2C	FOOT	170
ELECTRIC CABLE IN CONDUIT, EQUIPMENT GROUNDING CONDUCTOR, NO. 6 1C	FOOT	16
DRILL EXISTING HANDHOLE	EACH	1
DETECTOR LOOP, TYPE 1	FOOT	235
MODIFY EXISTING CONTROLLER	EACH	1
REMOVE EXISTING TRAFFIC SIGNAL EQUIPMENT	EACH	1
PEDESTRIAN SIGNAL POST, 5 FT.	EACH	1
ACCESSIBLE PEDESTRIAN SIGNALS	EACH	8
CONCRETE FOUNDATION, TYPE A, 12 INCH DIA.	FOOT	4
RE-OPTIMIZE TRAFFIC SIGNAL SYSTEM LEVEL 1	EACH	1

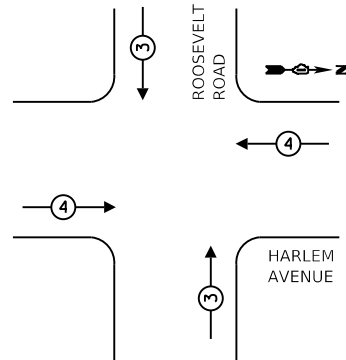
EXISTING CONTROLLER SEQUENCE



LEGEND

- ← * → DUAL ENTRY PHASE
- ← * → PEDESTRIAN PHASE
- ← * → OL OVERLAP
- * REFERS TO ASSOCIATED PHASE

EXISTING PHASE DESIGNATION DIAGRAM



EXISTING EMERGENCY VEHICLE PREEMPTION SEQUENCE

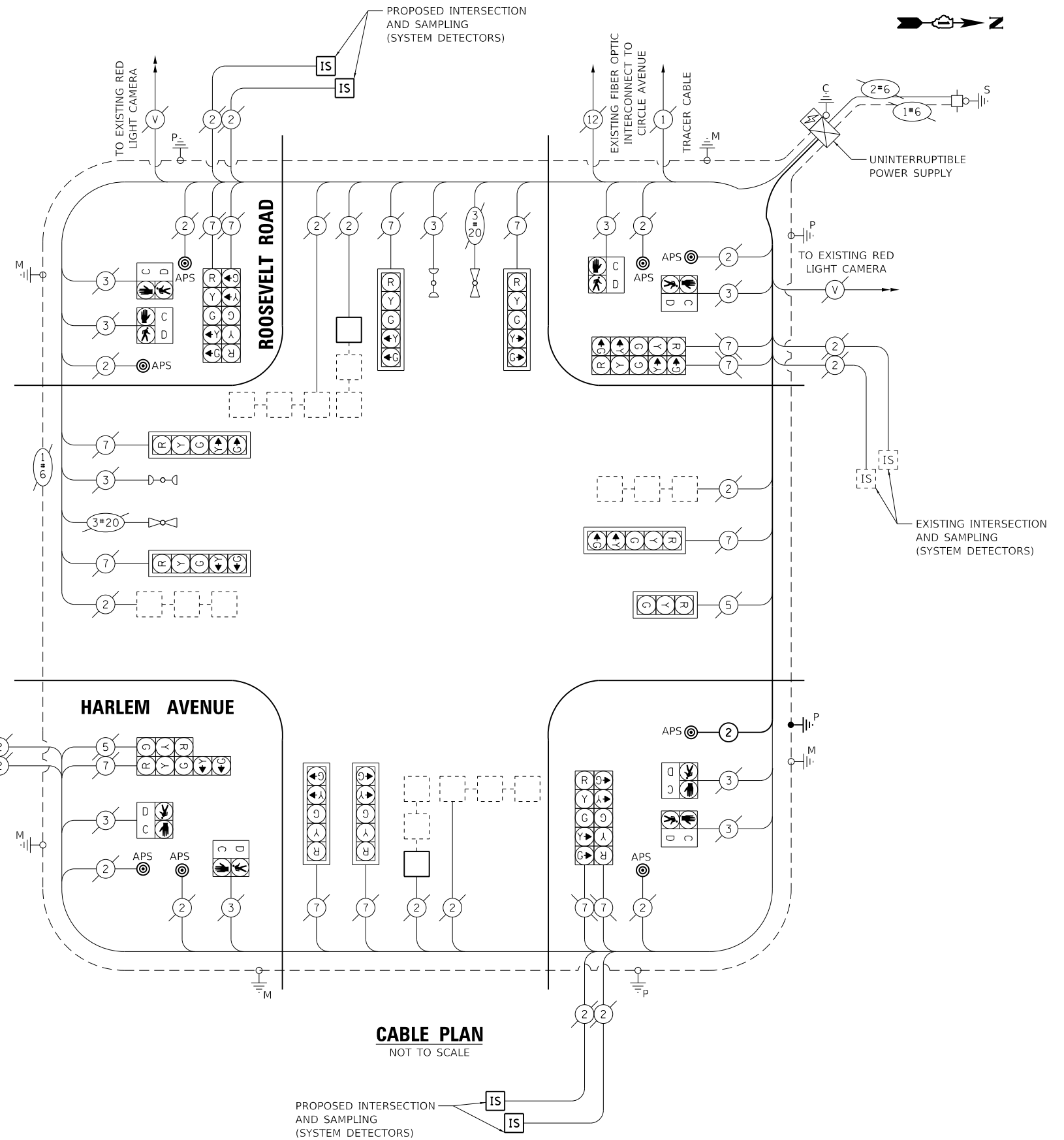
EMERGENCY VEHICLE PREEMPTOR	3	4
MOVEMENT	←	↓ ↑

TRAFFIC SIGNAL ELECTRICAL SERVICE REQUIREMENTS

TYPE	NO. OF LAMPS	LED WATTAGE	% OPERATION	TOTAL WATTAGE
SIGNAL (RED)	16	17	50	136
(YELLOW)	16	25	25	100
(GREEN)	16	15	25	60
ARROW (YELLOW)	14	12	10	17
(GREEN)	14	12	10	17
PED. SIGNAL	8	25	100	200
CONTROLLER	1	100	100	100
UPS	1	25	100	25
ILLUM. SIGN		25	5	
FLASHER			50	
TOTAL =				655

ENERGY COSTS TO:
 ILLINOIS DEPARTMENT OF TRANSPORTATION
 201 W. CENTER CT
 SCHAUMBURG, IL 60196

ENERGY SUPPLY: CONTACT: JOE STACHO
 PHONE: (630) 424-5704
 COMPANY: COMMONWEALTH EDISON
 ACCOUNT NUMBER: 49711-28304



CABLE PLAN
NOT TO SCALE

TS SHT NO. 15



USER NAME = jdavls	DESIGNED - PV	REVISED - 01/03/2022 JJD
PLOT SCALE = 100,0000' / in.	DRAWN - PV	REVISED -
PLOT DATE = 12/30/2022	CHECKED - JJD	REVISED -
	DATE - 11-18-2022	REVISED -

STATE OF ILLINOIS
DEPARTMENT OF TRANSPORTATION

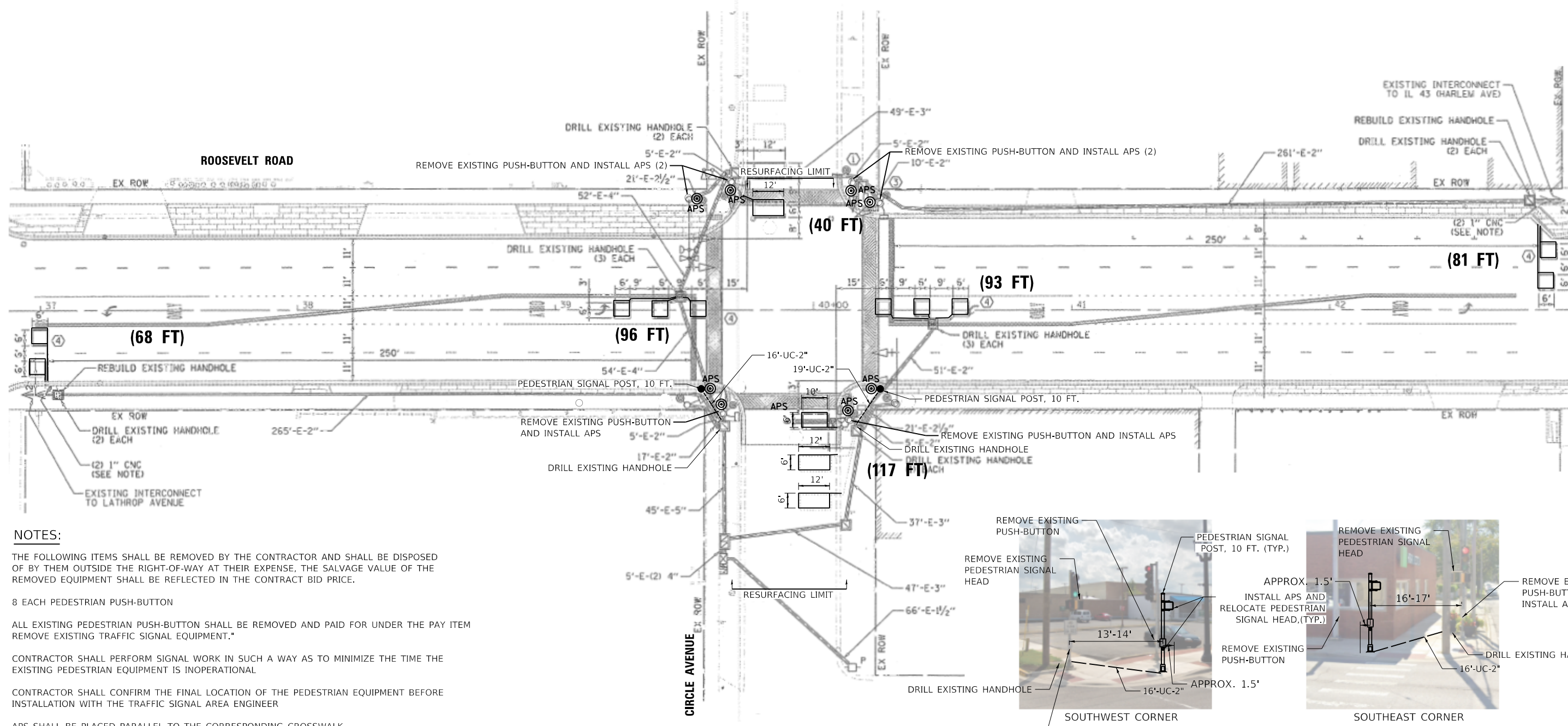
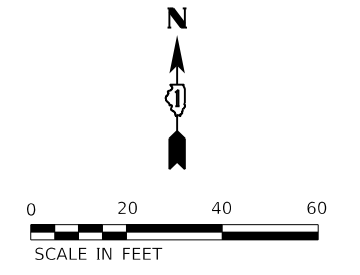
ROOSEVELT RD AND HARLEM AVE
APS AND DETECTOR LOOP REPLACEMENT PLAN

SCALE: 1" = 50' SHEET 8 OF 14 SHEETS STA. TO STA.

F.A.P. RTE. 347	SECTION 2021-047-RS	COUNTY COOK	TOTAL SHEETS 97	SHEET NO. 73
CONTRACT NO. 62N79			ILLINOIS FED. AID PROJECT	

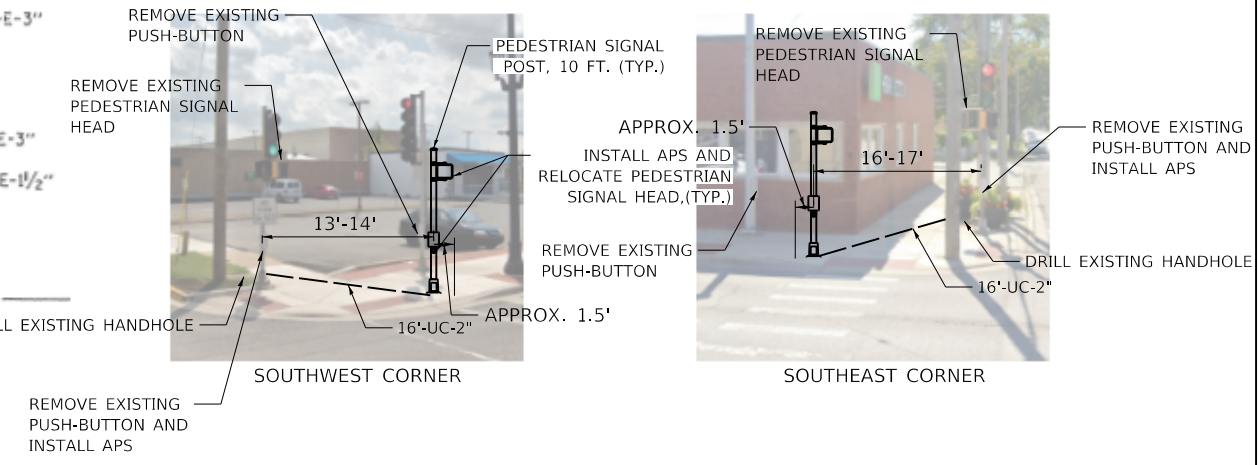
REVISED ENTIRE SHEET 1/4/2023

TS 2400
ECON 29



NOTES:

- THE FOLLOWING ITEMS SHALL BE REMOVED BY THE CONTRACTOR AND SHALL BE DISPOSED OF BY THEM OUTSIDE THE RIGHT-OF-WAY AT THEIR EXPENSE, THE SALVAGE VALUE OF THE REMOVED EQUIPMENT SHALL BE REFLECTED IN THE CONTRACT BID PRICE.
- 8 EACH PEDESTRIAN PUSH-BUTTON
- ALL EXISTING PEDESTRIAN PUSH-BUTTON SHALL BE REMOVED AND PAID FOR UNDER THE PAY ITEM REMOVE EXISTING TRAFFIC SIGNAL EQUIPMENT."
- CONTRACTOR SHALL PERFORM SIGNAL WORK IN SUCH A WAY AS TO MINIMIZE THE TIME THE EXISTING PEDESTRIAN EQUIPMENT IS INOPERATIONAL
- CONTRACTOR SHALL CONFIRM THE FINAL LOCATION OF THE PEDESTRIAN EQUIPMENT BEFORE INSTALLATION WITH THE TRAFFIC SIGNAL AREA ENGINEER
- APS SHALL BE PLACED PARALLEL TO THE CORRESPONDING CROSSWALK
- STATIONING SHOWN ON TRAFFIC SIGNAL PLAN ARE FROM RECORD DRAWINGS AND WILL NOT MATCH OTHER PLANS
- CONTRACTOR SHALL FIELD VERIFY ALL EXISTING TRAFFIC SIGNAL EQUIPMENT PRIOR TO ORDERING MATERIALS AND STARTING ANY WORK



TS SHT NO. 16



USER NAME = jdavls	DESIGNED - PV	REVISED - 01/03/2022 JJD
PLOT SCALE = 40.0000 "/td> <td>DRAWN - PV</td> <td>REVISED -</td>	DRAWN - PV	REVISED -
PLOT DATE = 12/30/2022	CHECKED - JJD	REVISED -
	DATE - 11-18-2022	REVISED -

**STATE OF ILLINOIS
DEPARTMENT OF TRANSPORTATION**

**Roosevelt Rd and Circle Ave
APS and Detector Loop Replacement Plan**

SCALE: 1" = 20' SHEET 9 OF 14 SHEETS STA. TO STA.

F.A.P. RTE. 347	SECTION 2021-047-RS	COUNTY COOK	TOTAL SHEETS 97	SHEET NO. 74
ILLINOIS FED. AID PROJECT			CONTRACT NO. 62N79	

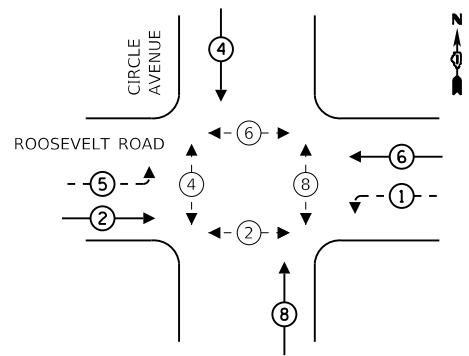
REVISI 1 REVISI 2 REVISI 3 REVISI 4 REVISI 5 REVISI 6 REVISI 7 REVISI 8 REVISI 9 REVISI 10 REVISI 11 REVISI 12 REVISI 13 REVISI 14 REVISI 15 REVISI 16 REVISI 17 REVISI 18 REVISI 19 REVISI 20 REVISI 21 REVISI 22 REVISI 23 REVISI 24 REVISI 25 REVISI 26 REVISI 27 REVISI 28 REVISI 29 REVISI 30 REVISI 31 REVISI 32 REVISI 33 REVISI 34 REVISI 35 REVISI 36 REVISI 37 REVISI 38 REVISI 39 REVISI 40 REVISI 41 REVISI 42 REVISI 43 REVISI 44 REVISI 45 REVISI 46 REVISI 47 REVISI 48 REVISI 49 REVISI 50 REVISI 51 REVISI 52 REVISI 53 REVISI 54 REVISI 55 REVISI 56 REVISI 57 REVISI 58 REVISI 59 REVISI 60 REVISI 61 REVISI 62 REVISI 63 REVISI 64 REVISI 65 REVISI 66 REVISI 67 REVISI 68 REVISI 69 REVISI 70 REVISI 71 REVISI 72 REVISI 73 REVISI 74 REVISI 75 REVISI 76 REVISI 77 REVISI 78 REVISI 79 REVISI 80 REVISI 81 REVISI 82 REVISI 83 REVISI 84 REVISI 85 REVISI 86 REVISI 87 REVISI 88 REVISI 89 REVISI 90 REVISI 91 REVISI 92 REVISI 93 REVISI 94 REVISI 95 REVISI 96 REVISI 97 REVISI 98 REVISI 99 REVISI 100

**TS 13700
ECON 29**

SCHEDULE OF QUANTITIES

ITEM DESCRIPTION	UNIT	TOTAL QTY
UNDERGROUND CONDUIT, GALVANIZED STEEL, 2" DIA	FOOT	35
MAINTENANCE OF EXISTING TRAFFIC SIGNAL INSTALLATION	EACH	1
ELECTRIC CABLE IN CONDUIT, SIGNAL NO. 14 2C	FOOT	251
ELECTRIC CABLE IN CONDUIT, EQUIPMENT GROUNDING CONDUCTOR, NO. 6 1C	FOOT	48
DRILL EXISTING HANDHOLE	EACH	2
DETECTOR LOOP, TYPE 1	FOOT	479
RELOCATE EXISTING PEDESTRIAN SIGNAL HEAD	EACH	2
MODIFY EXISTING CONTROLLER	EACH	1
REMOVE AND REINSTALL ELECTRIC CABLE FROM CONDUIT (NO.14 3C)	FOOT	157
REMOVE EXISTING TRAFFIC SIGNAL EQUIPMENT	EACH	1
PEDESTRIAN SIGNAL POST, 10 FT.	EACH	2
ACCESSIBLE PEDESTRIAN SIGNALS	EACH	8
CONCRETE FOUNDATION, TYPE A, 12 INCH DIA.	FOOT	8
RE-OPTIMIZE TRAFFIC SIGNAL SYSTEM LEVEL 1	EACH	1

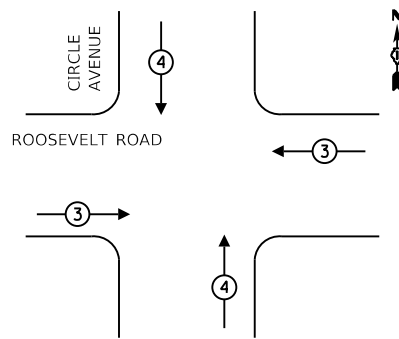
EXISTING CONTROLLER SEQUENCE



LEGEND

- ← (*) → DUAL ENTRY PHASE
- ← (P) → PEDESTRIAN PHASE
- ← OL → OVERLAP
- * REFERS TO ASSOCIATED PHASE

EXISTING PHASE DESIGNATION DIAGRAM



EXISTING EMERGENCY VEHICLE PREEMPTION SEQUENCE

EMERGENCY VEHICLE PREEMPTOR	3	4
MOVEMENT	← →	↓ ↑

TRAFFIC SIGNAL ELECTRICAL SERVICE REQUIREMENTS

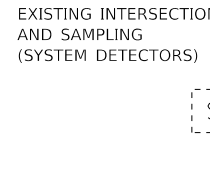
TYPE	NO. OF LAMPS	LED WATTAGE	% OPERATION	TOTAL WATTAGE
SIGNAL (RED)	10	17	50	85
(YELLOW)	10	25	25	63
(GREEN)	10	15	25	38
ARROW (YELLOW)	4	12	10	5
(GREEN)	4	12	10	5
PED. SIGNAL	8	25	100	200
CONTROLLER	1	100	100	100
UPS	1	25	100	25
ILLUM. SIGN		100	50	
FLASHER		25	50	
TOTAL =				521

ENERGY COSTS TO:

VILLAGE OF FOREST PARK
517 DES PLAINES AVE
FOREST PARK, IL 60130

ENERGY SUPPLY: CONTACT: JOE STACHO
PHONE: (630) 424-5704
COMPANY: COMMONWEALTH EDISON
ACCOUNT NUMBER: 49711-28304

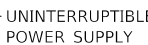
EXISTING INTERSECTION AND SAMPLING (SYSTEM DETECTORS)



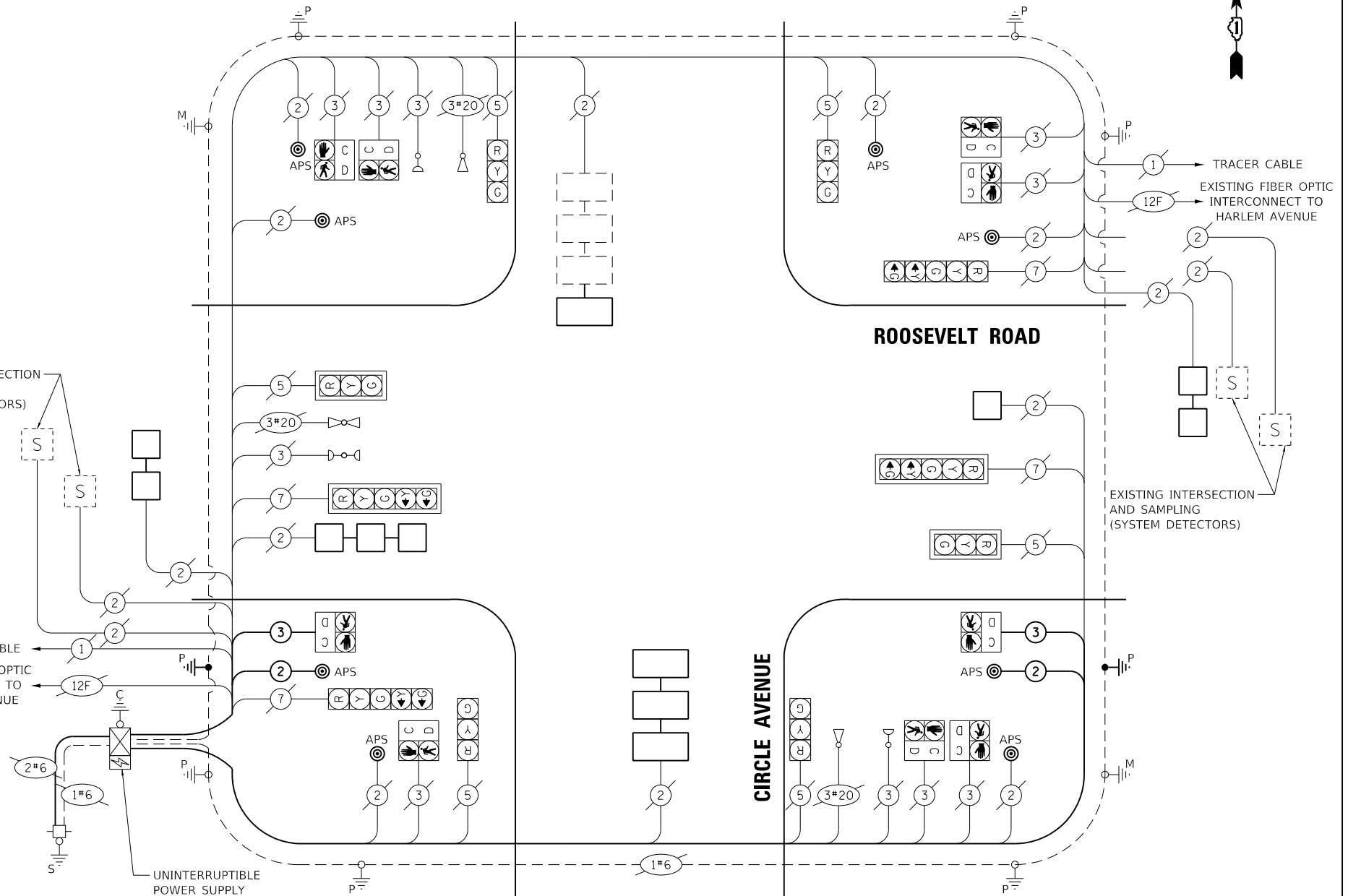
TRACER CABLE
EXISTING FIBER OPTIC INTERCONNECT TO LATHROP AVENUE



UNINTERRUPTIBLE POWER SUPPLY



CABLE PLAN
NOT TO SCALE



TS SHT NO. 17



USER NAME = jdvavls	DESIGNED - PV	REVISED - 01/03/2022 JJD
PLOT SCALE = 100,0000' / in.	DRAWN - PV	REVISED -
PLOT DATE = 12/30/2022	CHECKED - JJD	REVISED -
	DATE - 11-18-2022	REVISED -

STATE OF ILLINOIS
DEPARTMENT OF TRANSPORTATION

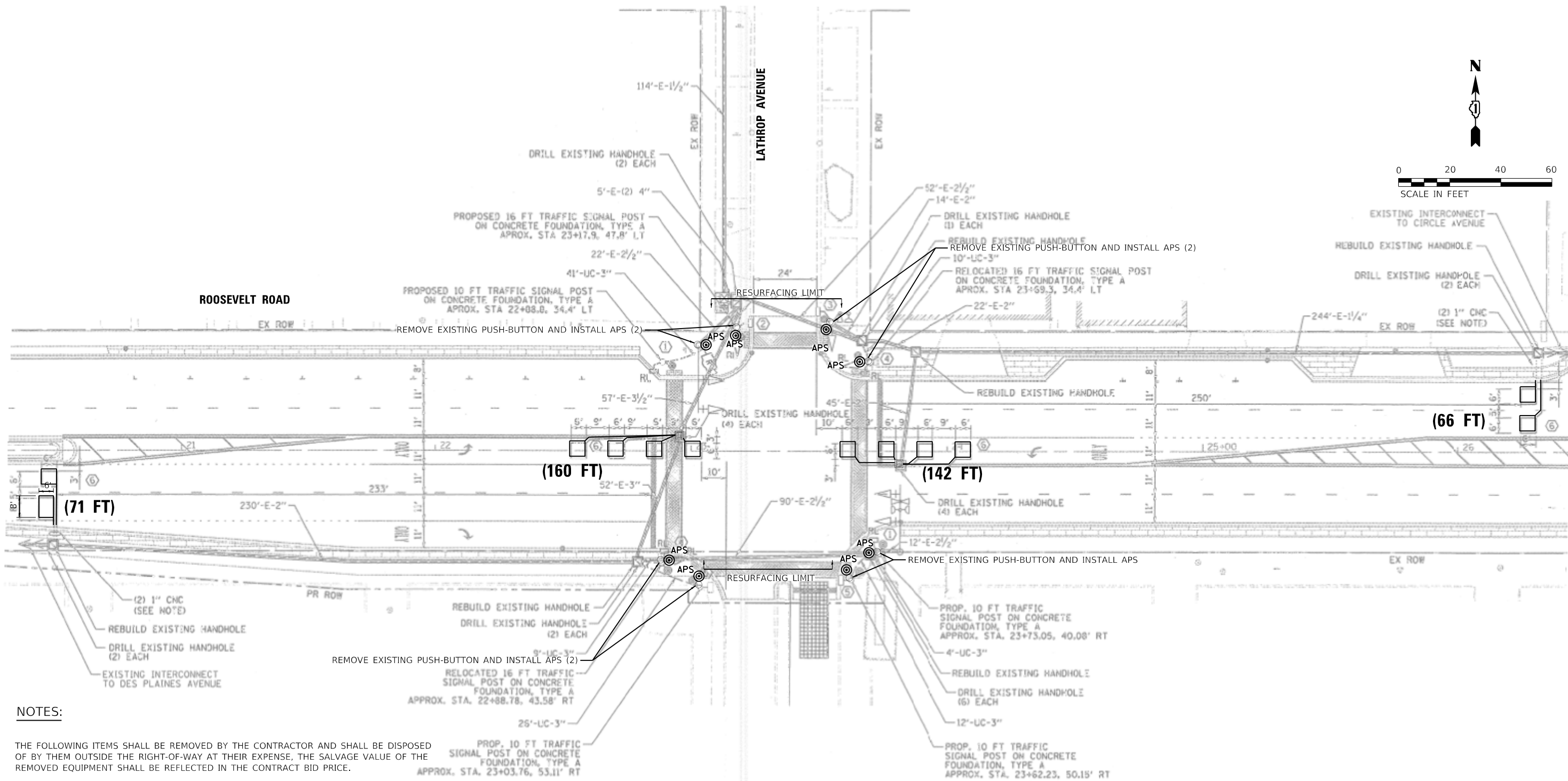
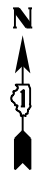
Roosevelt Rd and Circle Ave
APS and Detector Loop Replacement Plan

SCALE: 1" = 50' SHEET 10 OF 14 SHEETS STA. TO STA.

REVISED ENTIRE SHEET 1/4/2023

TS 13700
ECON 29

F.A.P. RTE.	SECTION	COUNTY	TOTAL SHEETS	SHEET NO.
347	2021-047-RS	COOK	97	75
CONTRACT NO. 62N79				
ILLINOIS FED. AID PROJECT				



NOTES:

- THE FOLLOWING ITEMS SHALL BE REMOVED BY THE CONTRACTOR AND SHALL BE DISPOSED OF BY THEM OUTSIDE THE RIGHT-OF-WAY AT THEIR EXPENSE, THE SALVAGE VALUE OF THE REMOVED EQUIPMENT SHALL BE REFLECTED IN THE CONTRACT BID PRICE.
- 8 EACH PEDESTRIAN PUSH-BUTTON
- ALL EXISTING PEDESTRIAN PUSH-BUTTON SHALL BE REMOVED AND PAID FOR UNDER THE PAY ITEM REMOVE EXISTING TRAFFIC SIGNAL EQUIPMENT."
- CONTRACTOR SHALL PERFORM SIGNAL WORK IN SUCH A WAY AS TO MINIMIZE THE TIME THE EXISTING PEDESTRIAN EQUIPMENT IS INOPERATIONAL
- CONTRACTOR SHALL CONFIRM THE FINAL LOCATION OF THE PEDESTRIAN EQUIPMENT BEFORE INSTALLATION WITH THE TRAFFIC SIGNAL AREA ENGINEER
- APS SHALL BE PLACED PARALLEL TO THE CORRESPONDING CROSSWALK
- STATIONING SHOWN ON TRAFFIC SIGNAL PLAN ARE FROM RECORD DRAWINGS AND WILL NOT MATCH OTHER PLANS
- CONTRACTOR SHALL FIELD VERIFY ALL EXISTING TRAFFIC SIGNAL EQUIPMENT PRIOR TO ORDERING MATERIALS AND STARTING ANY WORK

TS SHT NO. 18



USER NAME = jdavls	DESIGNED - PV	REVISED - 01/03/2022 JJD
DRAWN - PV	CHECKED - JJD	REVISED -
PLOT SCALE = 40.0000' / in.	DATE - 11-18-2022	REVISED -
PLOT DATE = 12/30/2022		

**STATE OF ILLINOIS
DEPARTMENT OF TRANSPORTATION**

ROOSEVELT RD AND LATHROP AVE APS AND DETECTOR LOOP REPLACEMENT PLAN	
SCALE: 1" = 20'	SHEET 11 OF 14 SHEETS STA. TO STA.

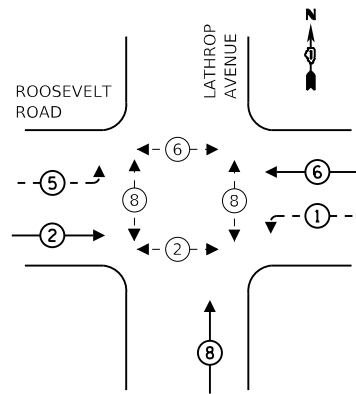
F.A.P. RTE. 347	SECTION 2021-047-RS	COUNTY COOK	TOTAL SHEETS 97	SHEET NO. 76
ILLINOIS FED. AID PROJECT			CONTRACT NO. 62N79	

REVISD ENTIRE SHEET 1/4/2023 **TS 2401
ECON 29**

SCHEDULE OF QUANTITIES

ITEM DESCRIPTION	UNIT	TOTAL QTY
MAINTENANCE OF EXISTING TRAFFIC SIGNAL INSTALLATION	EACH	1
DETECTOR LOOP, TYPE 1	FOOT	439
REMOVE EXISTING TRAFFIC SIGNAL EQUIPMENT	EACH	1
ACCESSIBLE PEDESTRIAN SIGNALS	EACH	8

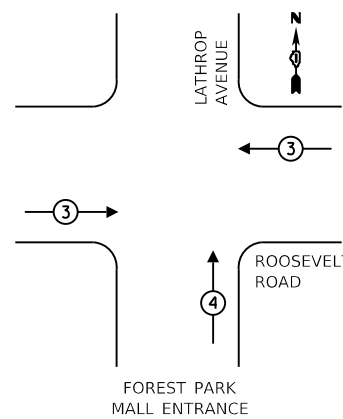
EXISTING CONTROLLER SEQUENCE



LEGEND

- ← * → DUAL ENTRY PHASE
- ← * PEDESTRIAN PHASE
- ▲ OL OVERLAP
- * REFERS TO ASSOCIATED PHASE

EXISTING PHASE DESIGNATION DIAGRAM



EXISTING EMERGENCY VEHICLE PREEMPTION SEQUENCE

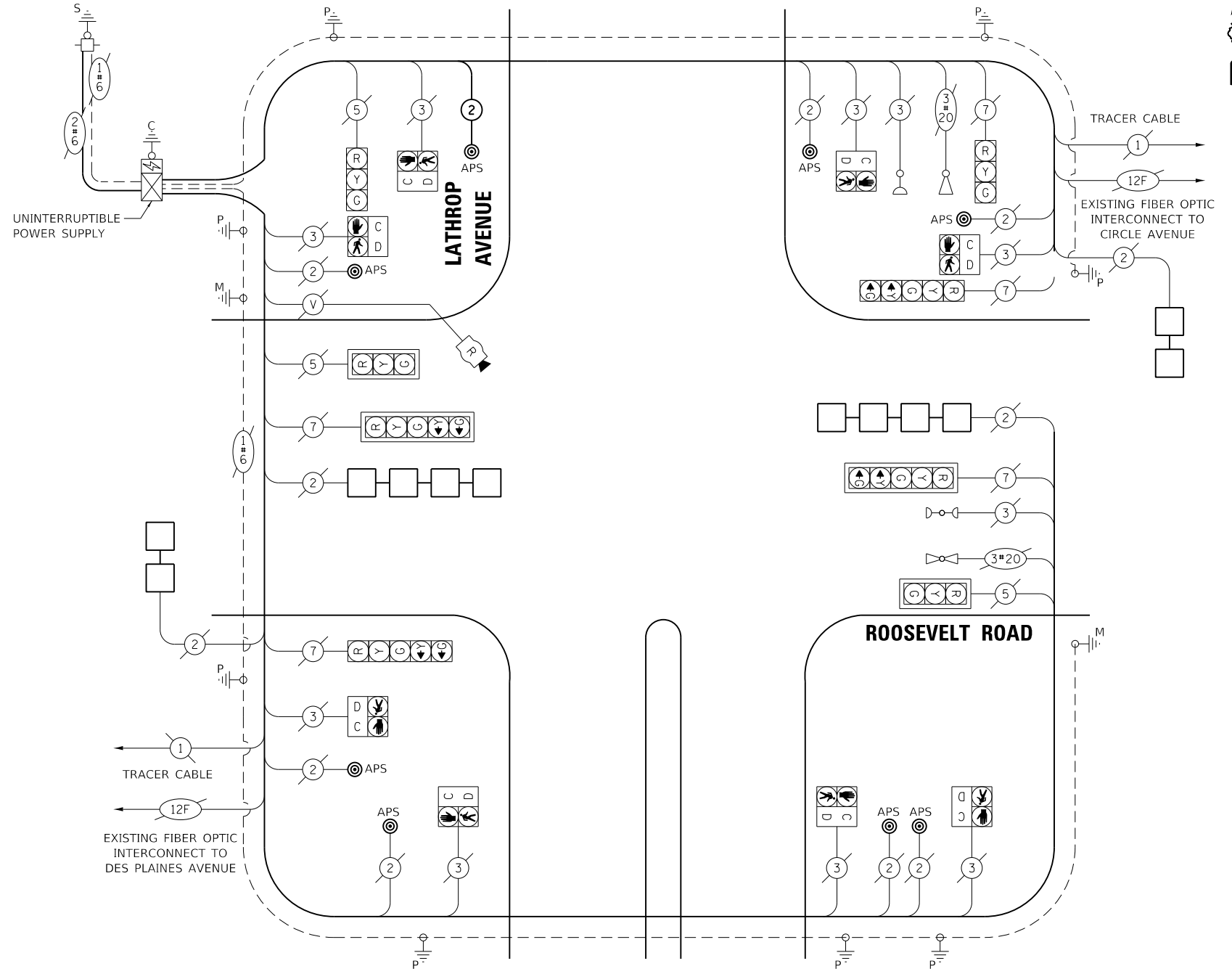
EMERGENCY VEHICLE PREEMPTOR	3	4
MOVEMENT	← →	↓ ↑

TRAFFIC SIGNAL ELECTRICAL SERVICE REQUIREMENTS

TYPE	NO. OF LAMPS	LED WATTAGE	% OPERATION	TOTAL WATTAGE
SIGNAL (RED)	8	17	50	68
(YELLOW)	8	25	25	50
(GREEN)	8	15	25	30
ARROW (YELLOW)	4	12	10	5
(GREEN)	4	12	10	5
PED. SIGNAL	4	25	100	100
CONTROLLER	1	100	100	100
UPS	1	25	100	25
ILLUM. SIGN		100	50	
FLASHER		25	50	
TOTAL =				383

ENERGY COSTS TO:
VILLAGE OF FOREST PARK
 517 DES PLAINES AVE
 FOREST PARK, IL 60130

ENERGY SUPPLY: CONTACT: JOE STACHO
 PHONE: (630) 424-5704
 COMPANY: COMMONWEALTH EDISON
 ACCOUNT NUMBER: 59360-12006



FOREST PARK MALL ENTRANCE

CABLE PLAN
 NOT TO SCALE

TS SHT NO. 19



USER NAME = jdvavls	DESIGNED - PV	REVISED - 01/03/2022 JJD
PLOT SCALE = 100,0000' / in.	DRAWN - PV	REVISED -
PLOT DATE = 12/30/2022	CHECKED - JJD	REVISED -
	DATE - 11-18-2022	REVISED -

STATE OF ILLINOIS DEPARTMENT OF TRANSPORTATION

**ROOSEVELT RD AND LATHROP AVE
 APS AND DETECTOR LOOP REPLACEMENT PLAN**

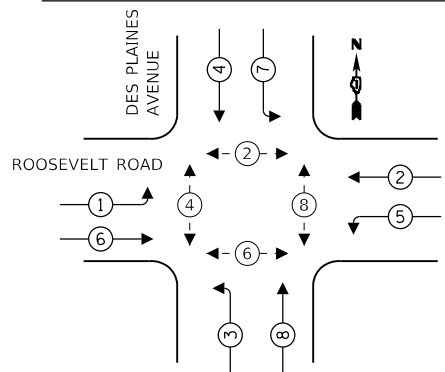
SCALE: 1" = 50' SHEET 12 OF 14 SHEETS STA. TO STA.

REVISOR		DATE		SHEET NO.	
1 REVISED ENTIRE SHEET 1/4/2023		TS 2401 ECON 29			
F.A.P. RTE.	SECTION	COUNTY	TOTAL SHEETS	SHEET NO.	
347	2021-047-RS	COOK	97	77	
CONTRACT NO. 62N79			ILLINOIS FED. AID PROJECT		

SCHEDULE OF QUANTITIES

ITEM DESCRIPTION	UNIT	TOTAL QTY
UNDERGROUND CONDUIT, GALVANIZED STEEL, 2" DIA	FOOT	22
MAINTENANCE OF EXISTING TRAFFIC SIGNAL INSTALLATION	EACH	1
ELECTRIC CABLE IN CONDUIT, SIGNAL NO. 14 2C	FOOT	271
ELECTRIC CABLE IN CONDUIT, EQUIPMENT GROUNDING CONDUCTOR, NO. 6 1C	FOOT	35
DRILL EXISTING HANDHOLE	EACH	2
DETECTOR LOOP, TYPE 1	FOOT	192
MODIFY EXISTING CONTROLLER	EACH	1
REMOVE EXISTING TRAFFIC SIGNAL EQUIPMENT	EACH	1
PEDESTRIAN SIGNAL POST, 5 FT.	EACH	2
ACCESSIBLE PEDESTRIAN SIGNALS	EACH	8
CONCRETE FOUNDATION, TYPE A, 12 INCH DIA.	FOOT	8
RE-OPTIMIZE TRAFFIC SIGNAL SYSTEM LEVEL 1	EACH	1

EXISTING CONTROLLER SEQUENCE



LEGEND

- ← * → DUAL ENTRY PHASE
- ← * → PEDESTRIAN PHASE
- ▲ * OL OVERLAP
- * REFERS TO ASSOCIATED PHASE

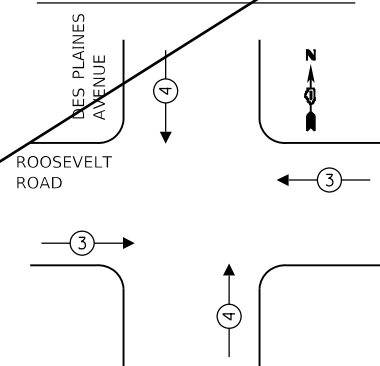
TRAFFIC SIGNAL ELECTRICAL SERVICE REQUIREMENTS

TYPE	NO. OF LAMPS	LED WATTAGE	% OPERATION	TOTAL WATTAGE	
SIGNAL	(RED)	16	17	50	136
	(YELLOW)	16	25	25	100
	(GREEN)	16	15	25	60
ARROW (YELLOW)	8	12	10	10	
ARROW (GREEN)	8	12	10	10	
PED. SIGNAL	8	25	100	200	
CONTROLLER	1	100	100	100	
ILLUM. SIGN		100	50		
FLASHER		25	50		
TOTAL =				616	

ENERGY COSTS TO:
ILLINOIS DEPARTMENT OF TRANSPORTATION
201 W. CENTER CT
SCHAUMBURG, IL 60196

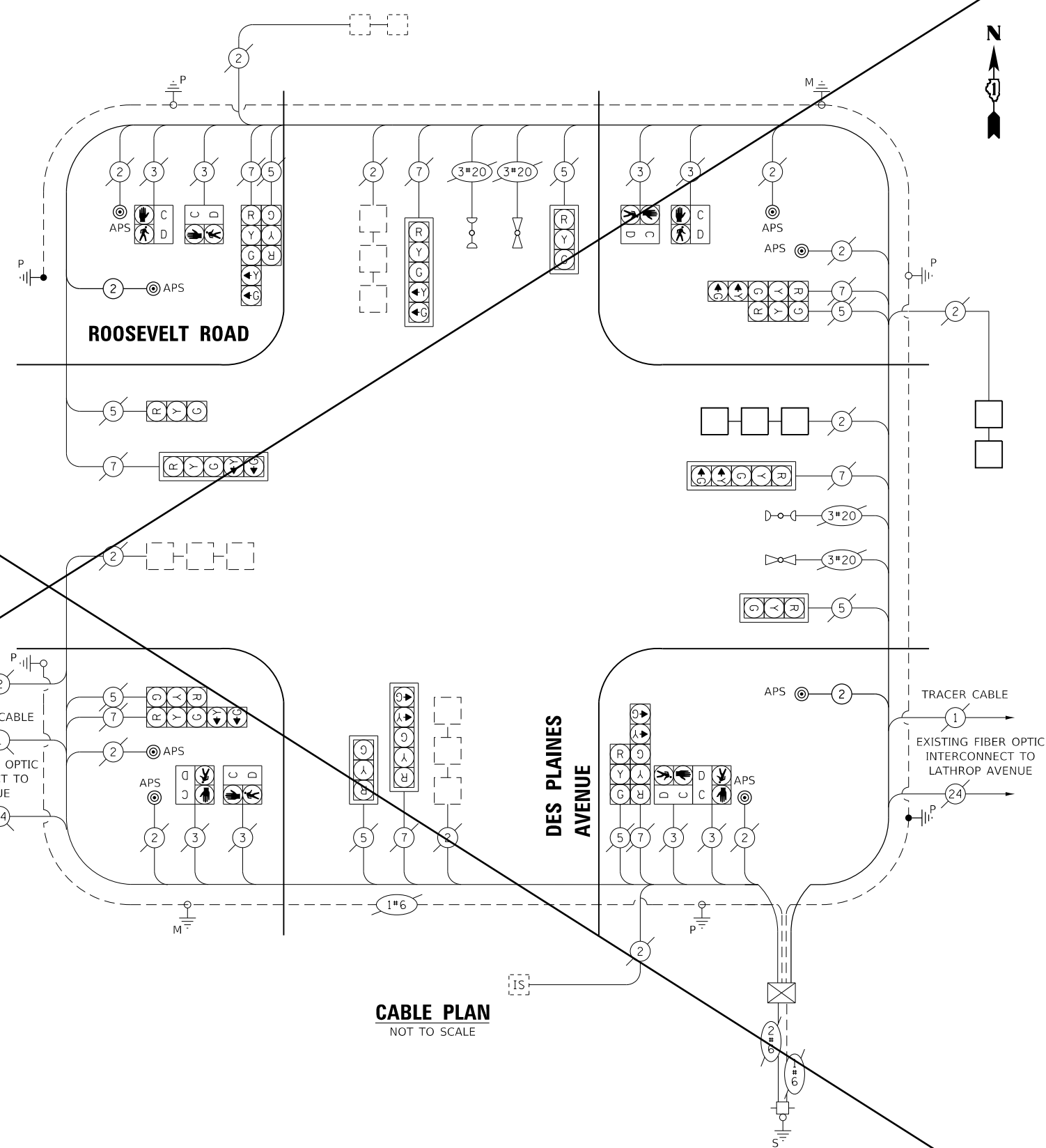
ENERGY SUPPLY: CONTACT: JOE STACHO
PHONE: (630) 424-5704
COMPANY: COMMONWEALTH EDISON
ACCOUNT NUMBER: 49711-28304

EXISTING PHASE DESIGNATION DIAGRAM



EXISTING EMERGENCY VEHICLE PREEMPTION SEQUENCE

EMERGENCY VEHICLE PREEMPTOR	3	4
MOVEMENT	←	↓



Intersection removed from project. No work at this location

DELETED ENTIRE SHEET 1/4/2023

TS-5000
ECON 29

TS SHT NO. 21

MODEL: Default
FILE: \Admin\Eng\Engineering\Live\Projects\31003_IDOT_DWB_HDR\WO 14 - Var APS\CADD\CADD_Sheets\0462929\02\21079-Sub-1-Roosevelt_Rd & Des Plaines_Ave-2.dgn



USER NAME = j.davis	DESIGNED - PV	REVISED - 01/03/2022 JJD
	DRAWN - PV	REVISED -
PLOT SCALE = 100,0000' / in.	CHECKED - JJD	REVISED -
PLOT DATE = 11/17/2022	DATE - 11-18-2022	REVISED -

**STATE OF ILLINOIS
DEPARTMENT OF TRANSPORTATION**

**ROOSEVELT RD AND DES PLAINES AVE
APS AND DETECTOR LOOP REPLACEMENT PLAN**

SCALE: 1" = 50' SHEET 14 OF 14 SHEETS STA. TO STA.

F.A.P. RTE.	SECTION	COUNTY	TOTAL SHEETS	SHEET NO.
347	2021-047-R5	COOK	97	79
CONTRACT NO. 62N79				
ILLINOIS FED. AID PROJECT				