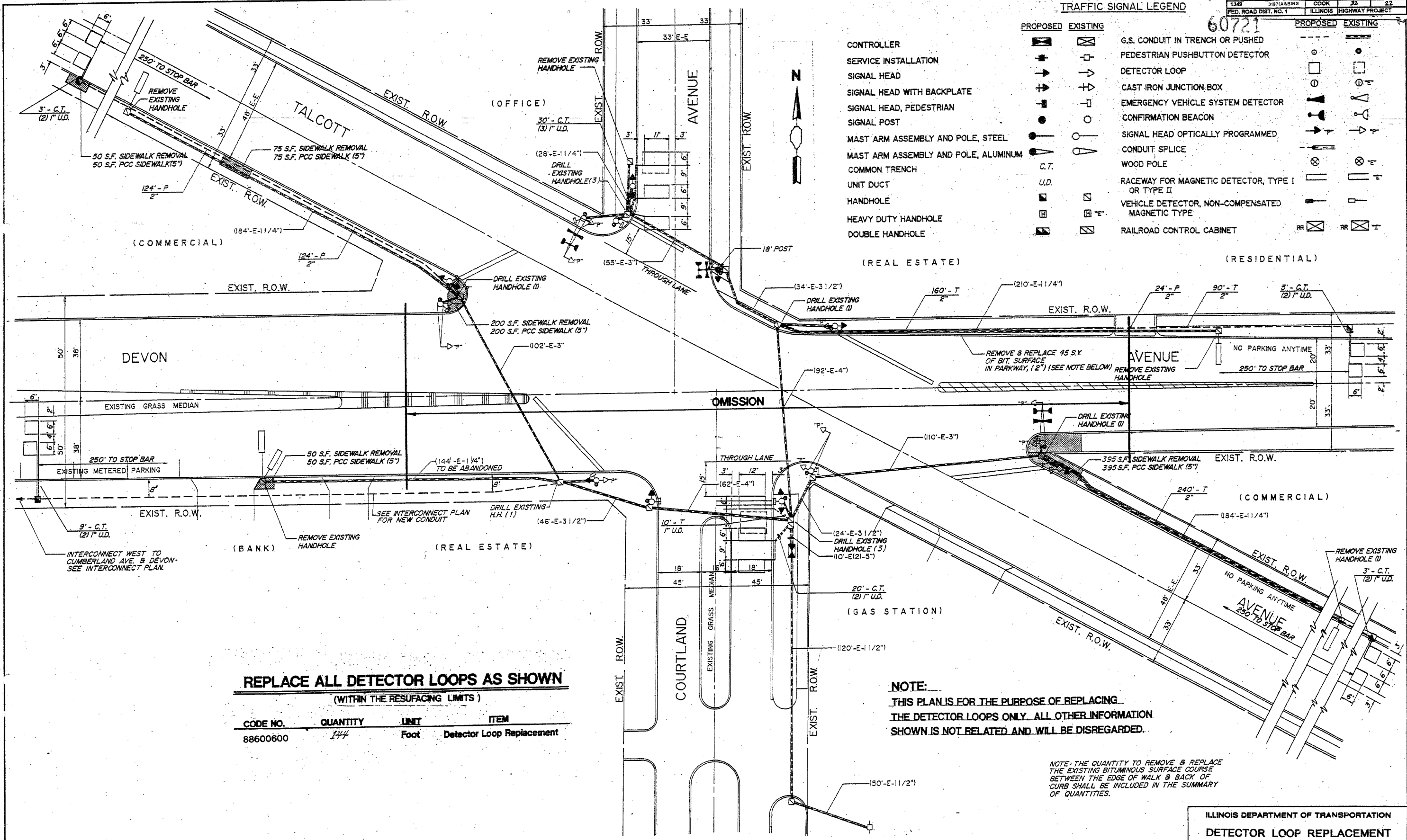


TRAFFIC SIGNAL LEGEND

PROPOSED	EXISTING	PROPOSED	EXISTING

60721



GEWALT-HAMILTON ASSOCIATES, INC.
 850 Forest Edge Drive
 VERNON HILLS, ILLINOIS 60061
 (847) 478-9700

TRAFFIC SIGNAL MODIFICATIONS - COURTLAND AVE.,
 TALCOTT RD. AT DEVON AVE.

TRAFFIC SIGNAL INSTALLATIONS
 AND FIBER OPTIC COMMUNICATIONS NETWORK
 CITY OF PARK RIDGE, ILLINOIS

NO.	BY	DATE	REVISION

ILLINOIS DEPARTMENT OF TRANSPORTATION
 DETECTOR LOOP REPLACEMENT
 DEVON AVE. AT
 COURTLAND/TALCOTT AVE.

SCALE: VERT. 1:20
 HORIZ. 1:20

DATE _____ DRAWN BY _____
 CHECKED BY _____