

F.A.U. RTE.	SECTION	COUNTY	TOTAL SHEETS	SHEET NO.
1587	2001-049RS	COOK	28	1

62058 62058

FOR INDEX OF SHEETS, SEE SHEET NO. 2

STATE OF ILLINOIS  
DEPARTMENT OF TRANSPORTATION  
DIVISION OF HIGHWAYS

# PROPOSED HIGHWAY PLANS

FAU 1587 (MCCARTHY RD.) & (ILLINOIS ST.)  
SECTION 2001-049RS

LOCATION 1: ILLINOIS ST. TO BELL RD.  
LOCATION 2: STATE ST. TO MAIN ST.  
RESURFACING (MAINTENANCE)  
COOK COUNTY  
C-91-487-00

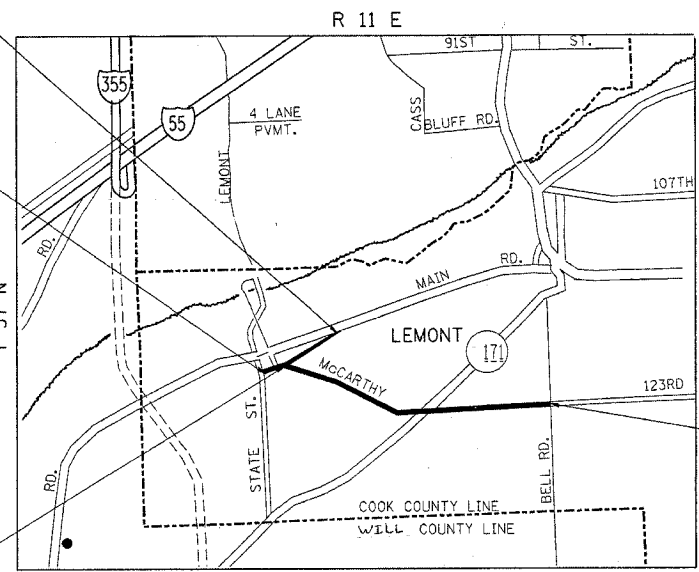
THIS IMPROVEMENT IS LOCATED IN THE VILLAGE OF LEMONT

LOCATION 2 IMPROVEMENT BEGINS STATION 2+45

LOCATION 2 IMPROVEMENT ENDS STATION 29+88

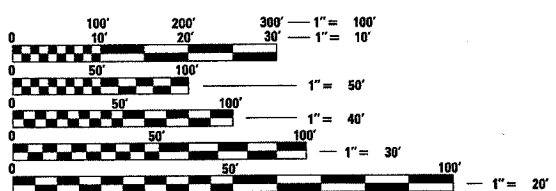
LOCATION 1 IMPROVEMENT BEGINS STATION 208+35.8

**TRAFFIC DATA**  
LOCATION 1  
2002 ADT = 10,200  
SPEED = 30-55 MPH  
LOCATION 2  
2002 ADT = 7,300  
SPEED = 25 MPH



LOCATION 1 IMPROVEMENT ENDS STATION 401+18

**LOCATION 1**  
GROSS LENGTH= 19282.2 FT = 3.652 MILES  
NET LENGTH= 18580.2 FT = 3.519 MILES  
**LOCATION 2**  
GROSS LENGTH= 2743 FT = .519 MILES  
NET LENGTH= 2743 FT = .519 MILES



FULL SIZE PLANS HAVE BEEN PREPARED USING STANDARD ENGINEERING SCALES. REDUCED SIZED PLANS WILL NOT CONFORM TO STANDARD SCALES. IN MAKING MEASUREMENTS ON REDUCED PLANS, THE ABOVE SCALES MAY BE USED.

J.U.L.I.E.  
JOINT UTILITY LOCATION INFORMATION FOR EXCAVATION  
1-800-892-0123

CONTRACT NO. 62058

STATE OF ILLINOIS  
DEPARTMENT OF TRANSPORTATION  
DIVISION OF HIGHWAYS

SUBMITTED October 21, 2004  
Dina O'Keefe/PP DISTRICT ENGINEER  
December 10, 2004  
Mike Hine/PP ENGINEER OF DESIGN AND ENVIRONMENT  
December 10, 2004  
Victor Modler/PP DIRECTOR, DIVISION OF HIGHWAYS

**PRINTED BY THE AUTHORITY  
OF THE STATE OF ILLINOIS**

DISTRICT 1 DESIGN - PLAN PREP ENGINEER /KEN ENG /ISSAM RAYYAN (847) 705-4557

14:13:59 10/20/2004