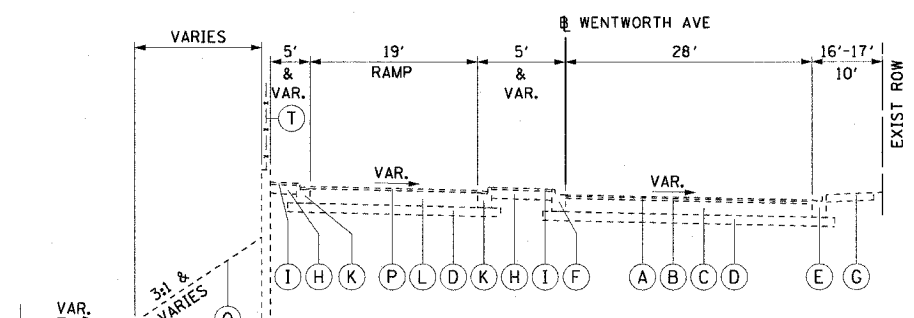


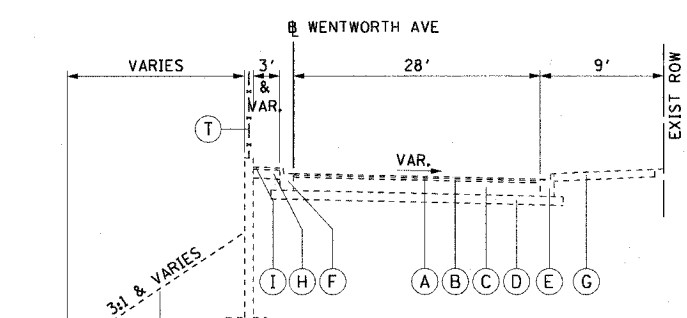
1 TYPICAL SECTION
S. WENTWORTH AVENUE

31'-32' STA. 99+99.22 TO STA. 100+37.88
31'-36' STA. 100+37.88 TO STA. 102+37.41
37' STA. 102+37.41 TO STA. 104+88.93



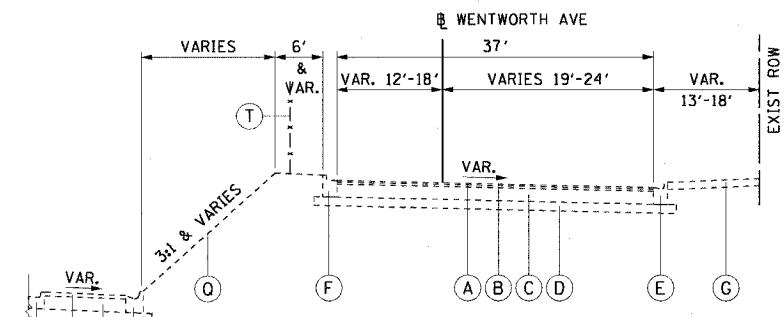
4 TYPICAL SECTION
S. WENTWORTH AVENUE

16'-17' STA. 108+81.32 TO STA. 109+23.90
10' STA. 125+28.04 TO STA. 126+23.31



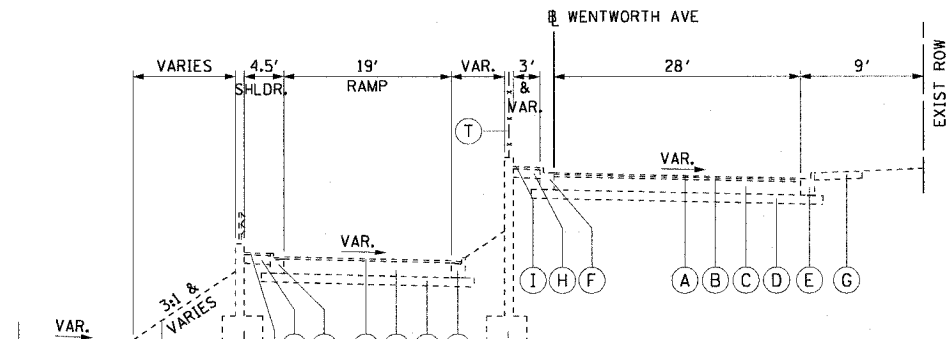
6 TYPICAL SECTION
S. WENTWORTH AVENUE

STA. 112+04.14 TO STA. 113+72.78
STA. 115+94.68 TO STA. 121+37.92



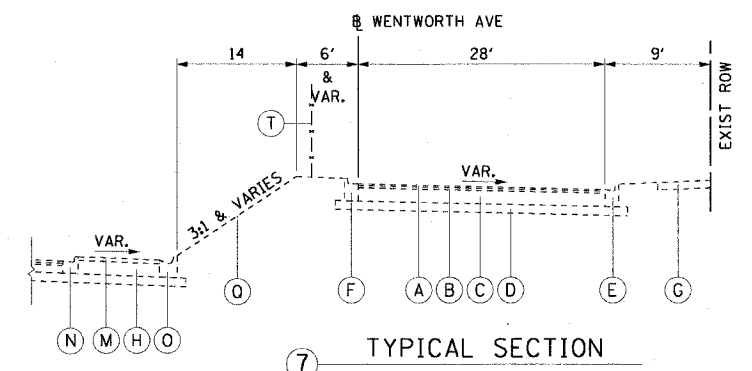
2 TYPICAL SECTION
S. WENTWORTH AVENUE

STA. 104+88.93 TO STA. 106+28.26



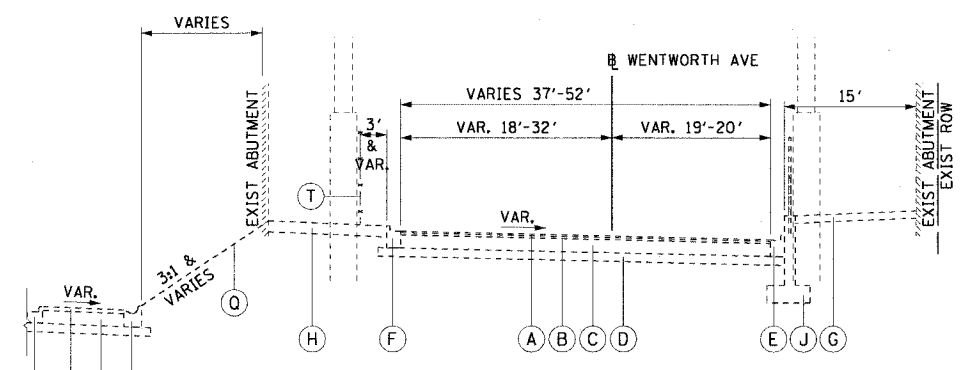
5 TYPICAL SECTION
S. WENTWORTH AVENUE

STA. 109+23.90 TO STA. 112+04.14
STA. 121+37.92 TO STA. 125+28.04



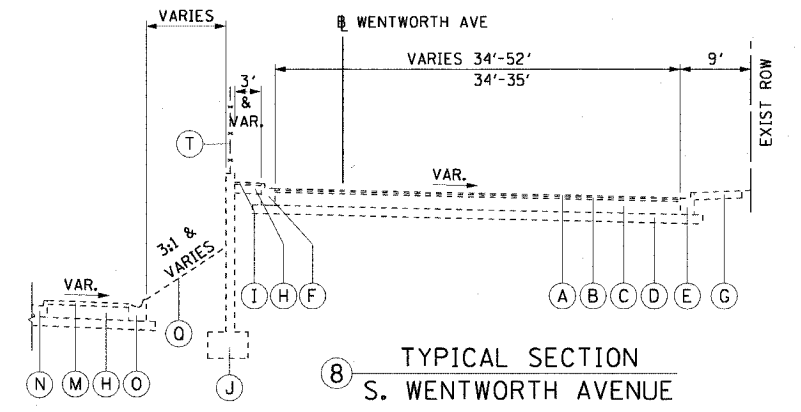
7 TYPICAL SECTION
S. WENTWORTH AVENUE

STA. 113+72.78 TO STA. 115+94.68



3 TYPICAL SECTION
S. WENTWORTH AVENUE

STA. 106+28.26 TO STA. 108+81.32
STA. 106+34.38 TO STA. 108+17.04 (ABUTMENT)



8 TYPICAL SECTION
S. WENTWORTH AVENUE

34'-52' STA. 126+23.31 TO STA. 130+53.18
34'-35' STA. 131+44.62 TO STA. 131+93.21

EXISTING LEGEND:

- (A) BIT. CONC. SURFACE COURSE, 1"
- (B) BIT. CONC. BINDER COURSE, 1/2"
- (C) P.C.C. BASE COURSE, 9"
- (D) SUB-BASE GRANULAR MATERIAL, TY A, 6"
- (E) COMB. CONC. CURB AND GUTTER, TYPE 3
- (F) COMB. CONC. CURB AND GUTTER, TYPE 3 (MOD)
- (G) P.C.C. SIDEWALK, 5"
- (H) GRAVEL OR CRUSHED STONE BASE COURSE, TY A, 6"
- (I) BIT. CONC. SURFACE COURSE, 1 1/2" (SHOULDER)
- (J) RETAINING WALL
- (K) COMB. CONC. CURB AND GUTTER, TYPE 32
- (L) P.C.C. PAVEMENT, 10"
- (M) BIT. CONC. SURFACE COURSE, 2 1/2" (SHOULDER)
- (N) COMB. CONC. CURB AND GUTTER, TYPE 31
- (O) COMB. CONC. CURB AND GUTTER, TYPE 34
- (P) BIT. CONC. SURFACE COURSE, 1 1/2"
- (Q) GRASS AREA
- (R) STABILIZED SHOULDER, 4"
- (S) CONT. REINF. CONC. PAVEMENT, 8"
- (T) CHAIN LINK FENCE

NOTE:
THE DEPTHS OF MATERIALS SHOWN WERE
TAKEN FROM AS-BUILT PLANS.

REVISIONS	
NAME	DATE

ILLINOIS DEPARTMENT OF TRANSPORTATION
F.A.I. 90/94 (DAN RYAN EXPRESSWAY)
63rd ST TO 59th ST (FRONTAGE ROAD & RAMPS)

**EXISTING TYPICAL SECTIONS
S. WENTWORTH AVENUE AND RAMPS**

SCALE: H:1"=10' V:1"=5'
DATE: October 29, 2004
DRAWN BY: AMM
CHECKED BY: RMG

10/22/2004 12:26:27 PM