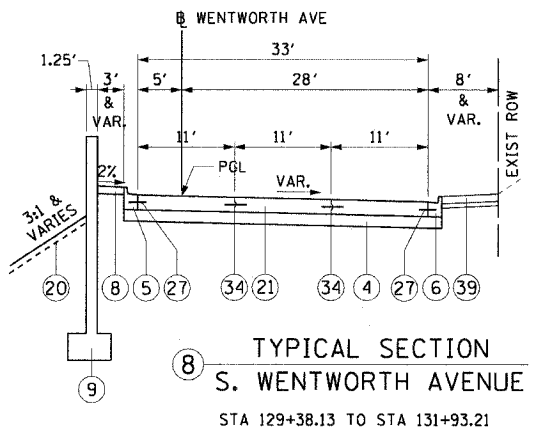
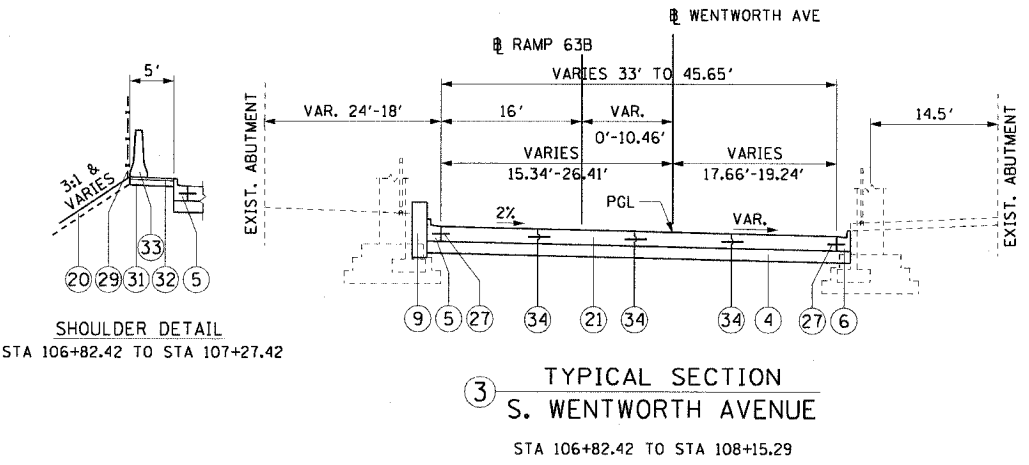
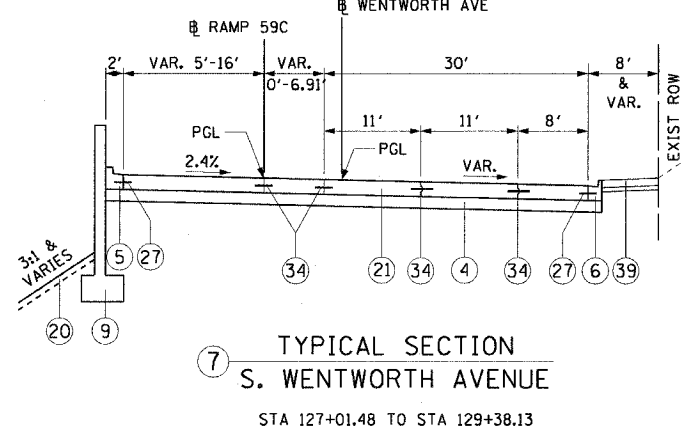
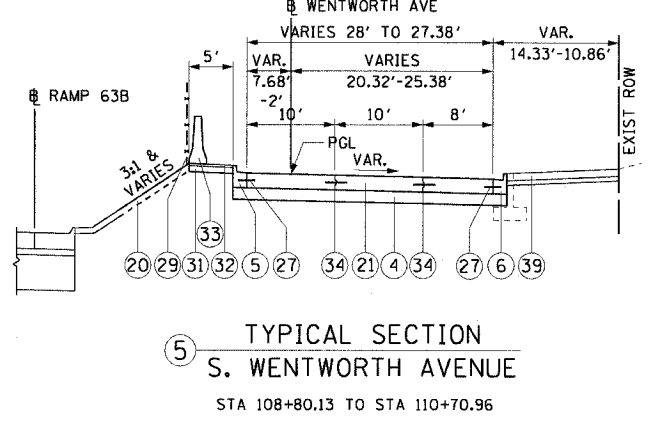
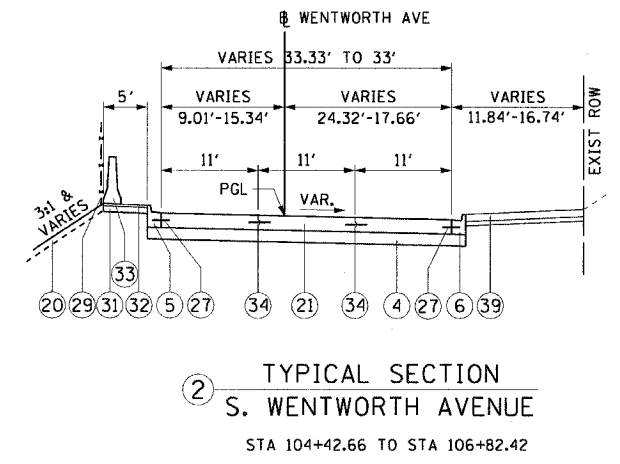
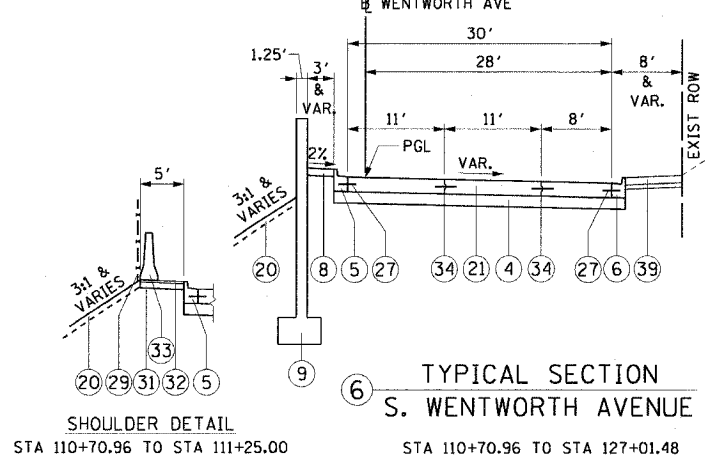
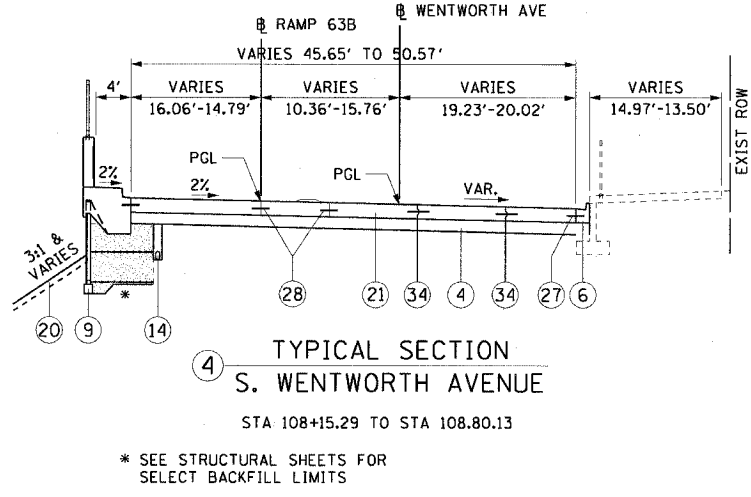
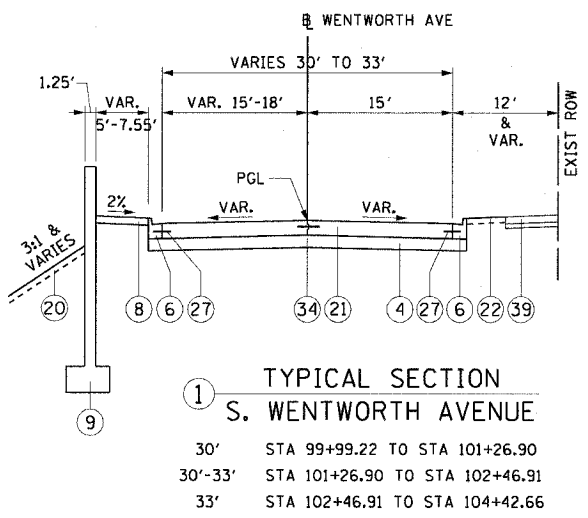


F.A.I. RTE.	SECTION	COUNTY	TOTAL SHEETS	SHEET NO.
90/94	2021-922PT.1-AC	COOK	460	18
STA.	TO STA.		FED. ROAD DIST. NO. 1 ILLINOIS FED. AID PROJECT	
			62693	



- PROPOSED LEGEND:**
- 1 CONTINUOUSLY REINFORCED PORTLAND CEMENT CONCRETE PAVEMENT, 14"
  - 2 STABILIZED SUB-BASE, 6"
  - 3 PORTLAND CEMENT CONCRETE SHOULDERS, 14"
  - 4 SUB-BASE GRANULAR MATERIAL, TYPE B, 8"
  - 5 COMBINATION CONCRETE CURB AND GUTTER, TYPE B-6.12 (MODIFIED)
  - 6 COMBINATION CONCRETE CURB AND GUTTER, TYPE B-V.12
  - 7 PORTLAND CEMENT CONCRETE SIDEWALK, 5"
  - 8 CONCRETE MEDIAN SURFACE, 5" (MODIFIED)
  - 9 RETAINING WALL OR MSE WALL WITH MOMENT SLAB
  - 10 PORTLAND CEMENT CONCRETE PAVEMENT, 11" (JOINTED)
  - 11 STABILIZED SUB-BASE, 4"
  - 12 COMBINATION CONCRETE CURB AND GUTTER, TYPE M-4.48 (MODIFIED)
  - 13 SUB-BASE GRANULAR MATERIAL, TYPE B, 24"
  - 14 PIPE UNDERDRAIN, 6"
  - 15 RETAINING WALL WITH CONCRETE BARRIER, SINGLE FACE
  - 16 COMBINATION CONCRETE CURB AND GUTTER, TYPE M-4.12
  - 17 TEMPORARY PAVEMENT (INTERSTATE) (14" BITUMINOUS OR 12" P.C.C.)
  - 18 PORTLAND CEMENT CONCRETE SHOULDERS, 11"
  - 20 SEEDING, CLASS 2A / TOPSOIL FURNISH AND PLACE, 4"
  - 21 PORTLAND CEMENT CONCRETE PAVEMENT, 10" (JOINTED)
  - 22 SODDING, SALT TOLERANT / TOPSOIL FURNISH AND PLACE, 4"
  - 24 CONCRETE BARRIER, SINGLE FACE, 32"
  - 25 BARRIER BASE
  - 26 COMBINATION CONCRETE CURB AND GUTTER, TYPE M-4.24
  - 27 TIE BARS - 24" LONG, #6 EPOXY COATED BARS AT 24" CENTERS
  - 28 SHOULDER LONGITUDINAL CONSTRUCTION JOINT - 30" LONG, #8 EPOXY COATED DEFORMED BARS AT 24" CENTERS
  - 29 CHAIN LINK FENCE, 4"
  - 30 GEOTECHNICAL FABRIC FOR GROUND STABILIZATION
  - 31 AGGREGATE BASE COURSE, TYPE B, 4"
  - 32 BITUMINOUS SHOULDERS, 1 1/2"
  - 33 FURNISH TEMPORARY CONCRETE BARRIER
  - 34 KEYED LONGITUDINAL CONSTRUCTION JOINT - 24" LONG, #6 EPOXY COATED DEFORMED TIE BARS AT 24" CENTERS
  - 35 SAND CUSHION, 3"
  - 36 CONCRETE MEDIAN SURFACE, 6" (SPECIAL)
  - 37 SAND BACKFILL
  - 38 CONCRETE MEDIAN SURFACE, 6"
  - 39 P.C.C. SIDEWALK, 5" AND SAND CUSHION, 3" (BY OTHERS)

ITEM	AC TYPE	VOIDS	RAP %
STABILIZED SUB-BASE, 4"	PG 58-22	2% @ 30 Gyr	50
STABILIZED SUB-BASE, 6"	PG 58-22	2% @ 30 Gyr	50
BITUMINOUS SHOULDER, 1 1/2"	PG 58-22	2% @ 30 Gyr	50
BITUMINOUS SHOULDER, SUPERPAVE, 6"	PG 64-22	4% @ 70 Gyr	15
POLYMERIZED BIT. CONC. SURFACE COURSE, SUPERPAVE, MIX F, NIOS, 1 3/4"	SBS PG 76-22	4% @ 105 Gyr	0
POLYMERIZED BIT. CONC. BINDER COURSE, SUPERPAVE, IL-19.0, NIOS, 1 3/4"	SBS PG 76-22	4% @ 105 Gyr	0

REVISIONS	
NAME	DATE

ILLINOIS DEPARTMENT OF TRANSPORTATION  
 F.A.I. 90/94 (DAN RYAN EXPRESSWAY)  
 63rd ST TO 59th ST (FRONTAGE ROAD & RAMPS)

**PROPOSED TYPICAL SECTIONS  
 S. WENTWORTH AVENUE**

SCALE: H:1"=10', V:1"=5'  
 DATE: October 29, 2004  
 DRAWN BY: AMM  
 CHECKED BY: RMG

NOTE:  
 FOR GORE INFORMATION, SEE GORE DETAILS SHEETS.

10/22/2004 12:28:39 PM