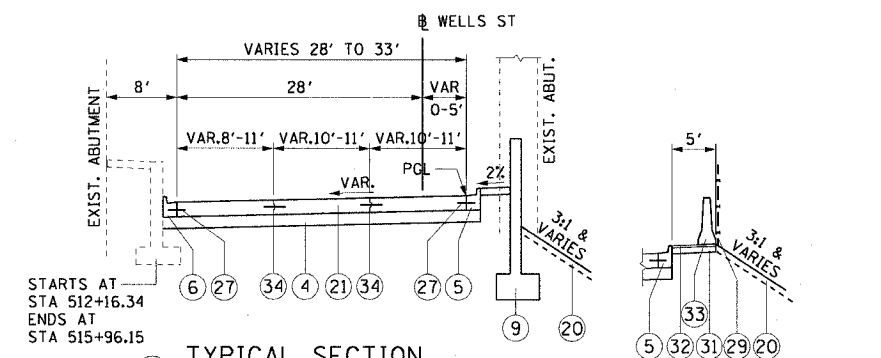
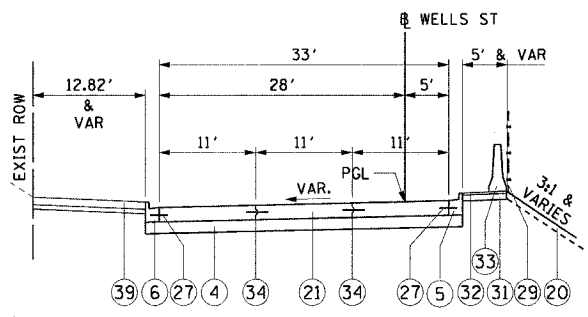


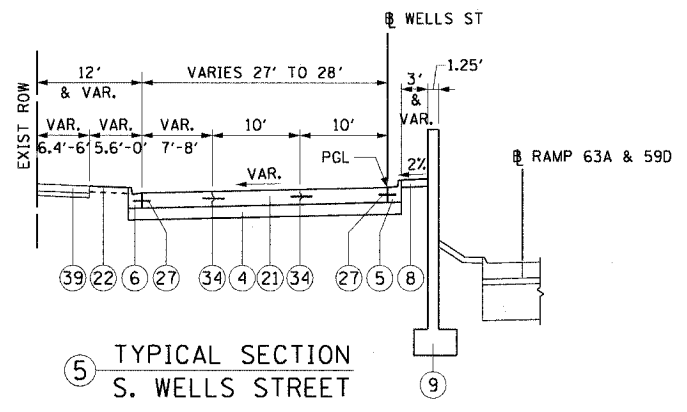
1 TYPICAL SECTION
S. WELLS STREET
STA 506+92.81 TO STA 507+81.60



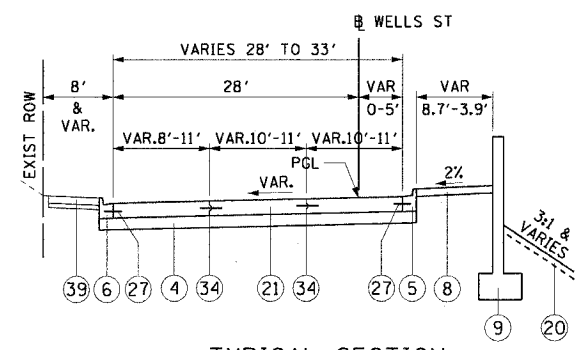
4 TYPICAL SECTION
S. WELLS STREET
STARTS AT STA 512+16.34
ENDS AT STA 515+96.15
33'-28" STA 512+00.00 TO STA 513+25.00
28" STA 513+25.00 TO STA 515+96.15
SHOULDER DETAIL
STA 512+00.00 TO STA 513+16.20



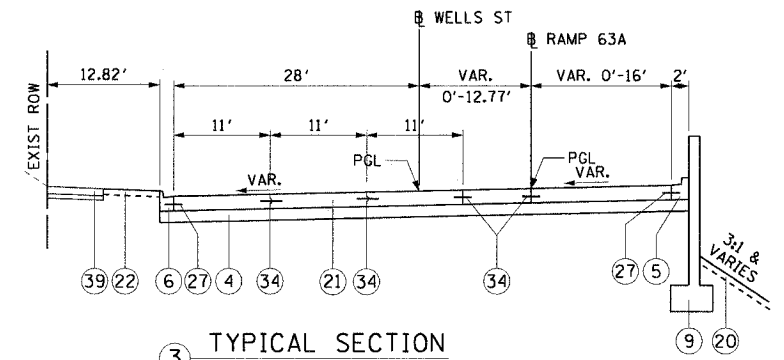
2 TYPICAL SECTION
S. WELLS STREET
STA 507+81.60 TO STA 508+53.93
STA 510+92.54 TO STA 512+00.00



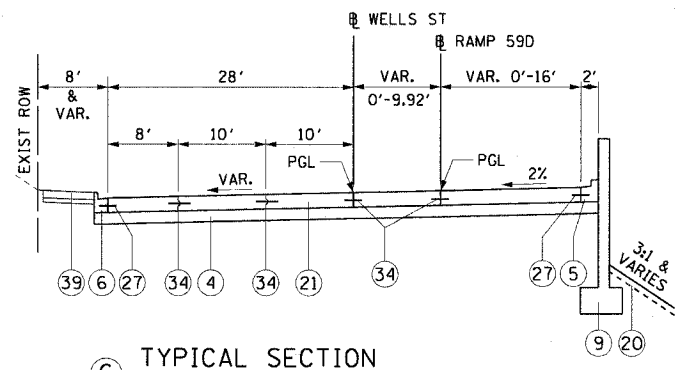
5 TYPICAL SECTION
S. WELLS STREET
28" STA 515+96.15 TO STA 528+23.61
28'-27" STA 531+52.46 TO STA 531+64.46
27" STA 531+64.46 TO STA 531+91.26
27'-28" STA 531+91.26 TO STA 532+16.26



7 TYPICAL SECTION
S. WELLS STREET
28'-33" STA 532+16.26 TO STA 533+41.26
33" STA 533+41.26 TO STA 535+32.53



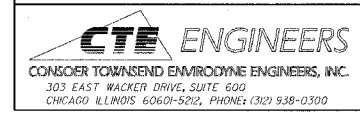
3 TYPICAL SECTION
S. WELLS STREET
STA 508+53.93 TO STA 510+92.54



6 TYPICAL SECTION
S. WELLS STREET
STA 528+23.61 TO STA 531+52.46

PROPOSED LEGEND:

- 1 CONTINUOUSLY REINFORCED PORTLAND CEMENT CONCRETE PAVEMENT, 14"
- 2 STABILIZED SUB-BASE, 6"
- 3 PORTLAND CEMENT CONCRETE SHOULDERS, 14"
- 4 SUB-BASE GRANULAR MATERIAL, TYPE B, 8"
- 5 COMBINATION CONCRETE CURB AND GUTTER, TYPE B-6.12 (MODIFIED)
- 6 COMBINATION CONCRETE CURB AND GUTTER, TYPE B-V.12
- 7 PORTLAND CEMENT CONCRETE SIDEWALK, 5"
- 8 CONCRETE MEDIAN SURFACE, 5" (MODIFIED)
- 9 RETAINING WALL OR MSE WALL WITH MOMENT SLAB
- 10 PORTLAND CEMENT CONCRETE PAVEMENT, 11" (JOINTED)
- 11 STABILIZED SUB-BASE, 4"
- 12 COMBINATION CONCRETE CURB AND GUTTER, TYPE M-4.48 (MODIFIED)
- 13 SUB-BASE GRANULAR MATERIAL, TYPE B, 24"
- 14 PIPE UNDERDRAIN, 6"
- 15 RETAINING WALL WITH CONCRETE BARRIER, SINGLE FACE
- 16 COMBINATION CONCRETE CURB AND GUTTER, TYPE M-4.12
- 17 TEMPORARY PAVEMENT (INTERSTATE) (14" BITUMINOUS OR 12" P.C.C.)
- 18 PORTLAND CEMENT CONCRETE SHOULDERS, 11"
- 20 SEEDING, CLASS 2A / TOPSOIL FURNISH AND PLACE, 4"
- 21 PORTLAND CEMENT CONCRETE PAVEMENT, 10" (JOINTED)
- 22 SODDING, SALT TOLERANT / TOPSOIL FURNISH AND PLACE, 4"
- 24 CONCRETE BARRIER, SINGLE FACE, 32"
- 25 BARRIER BASE
- 26 COMBINATION CONCRETE CURB AND GUTTER, TYPE M-4.24
- 27 TIE BARS - 24" LONG, #6 EPOXY COATED BARS AT 24" CENTERS
- 28 SHOULDER LONGITUDINAL CONSTRUCTION JOINT - 30" LONG, #8 EPOXY COATED DEFORMED BARS AT 24" CENTERS
- 29 CHAIN LINK FENCE, 4"
- 30 GEOTECHNICAL FABRIC FOR GROUND STABILIZATION
- 31 AGGREGATE BASE COURSE, TYPE B, 4"
- 32 BITUMINOUS SHOULDERS, 1 1/2"
- 33 FURNISH TEMPORARY CONCRETE BARRIER
- 34 KEYED LONGITUDINAL CONSTRUCTION JOINT - 24" LONG, #6 EPOXY COATED DEFORMED TIE BARS AT 24" CENTERS
- 35 SAND CUSHION, 3"
- 36 CONCRETE MEDIAN SURFACE, 6" (SPECIAL)
- 37 SAND BACKFILL
- 38 CONCRETE MEDIAN SURFACE, 6"
- 39 P.C.C. SIDEWALK, 5" AND SAND CUSHION, 3" (BY OTHERS)



NOTE:
FOR GORE INFORMATION, SEE GORE DETAILS SHEETS.

REVISIONS	
NAME	DATE

ILLINOIS DEPARTMENT OF TRANSPORTATION
F.A.I. 90/94 (DAN RYAN EXPRESSWAY)
63rd ST TO 59th ST (FRONTAGE ROAD & RAMPS)

**PROPOSED TYPICAL SECTIONS
S. WELLS STREET**

SCALE: H:1"=10', V:1"=5'
DATE: October 29, 2004
DRAWN BY: AMM
CHECKED BY: RMG

10/22/2004 12:28:59 PM