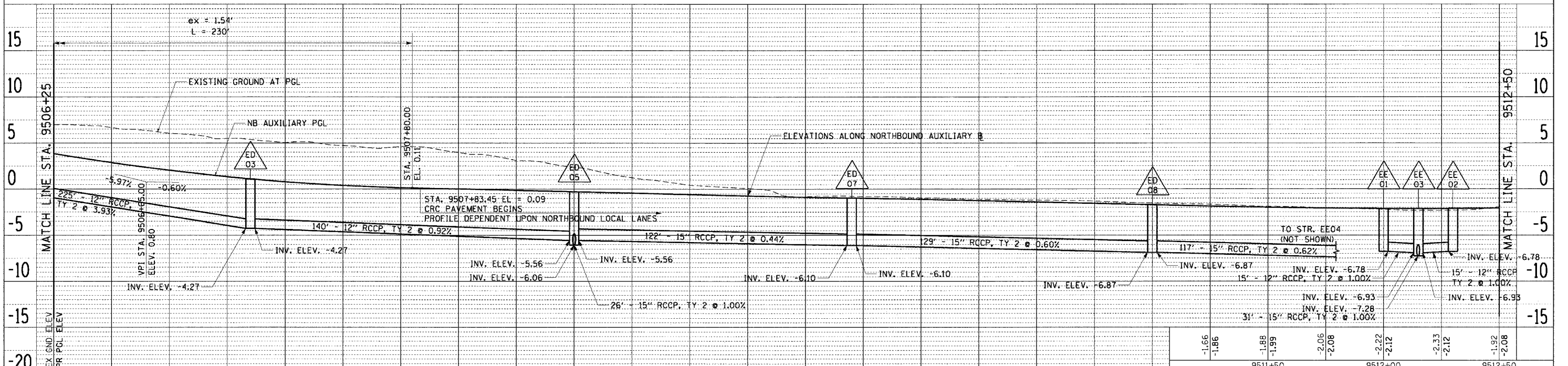
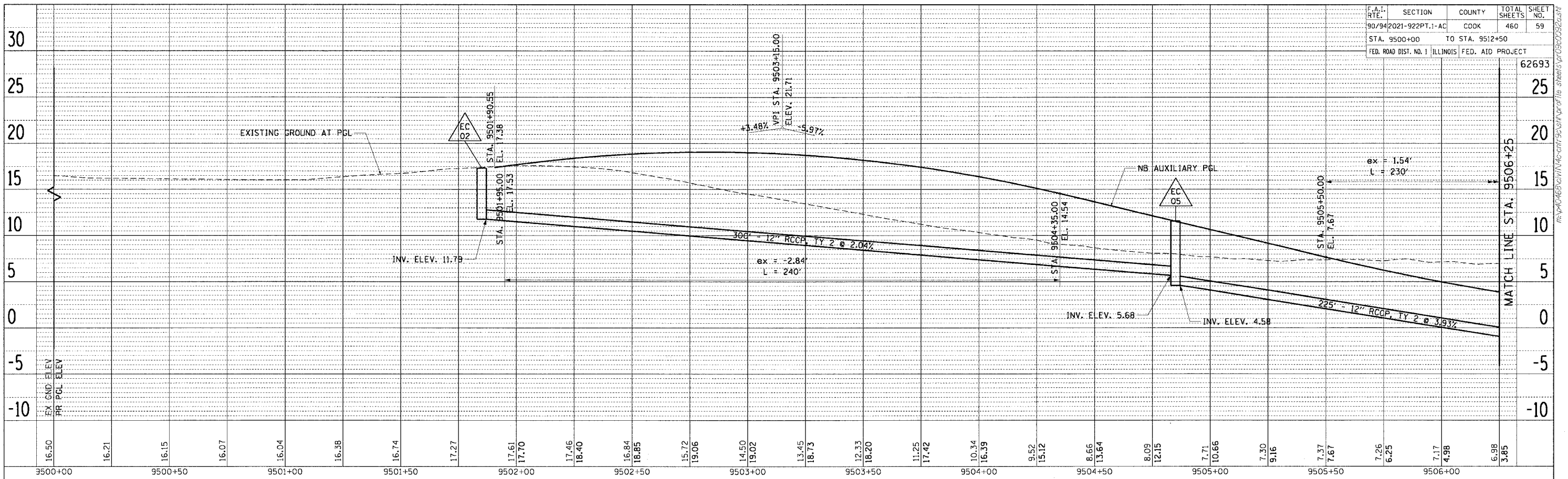


F.A.I. RTE.	SECTION	COUNTY	TOTAL SHEETS	SHEET NO.
90/94	2021-922PT.1-AC	COOK	460	59
STA. 9500+00 TO STA. 9512+50		ILLINOIS FED. AID PROJECT		



6.98	3.85	6.66	2.87	6.05	2.03	5.51	1.34	5.04	0.79	4.72	0.40	4.62	0.14	3.99	0.01	3.09	-0.14	2.37	-0.29	1.23	-0.44	0.43	-0.59	0.07	-0.74	-0.83	-0.88	-0.81	-0.98	-0.95	-1.11	-1.11	-1.26	-1.20	-1.41	-1.32	-1.56	-1.63	-1.71
9506+50		9507+00		9507+50		9508+00		9508+50		9509+00		9509+50		9510+00		9510+50		9511+00		9511+50		9512+00		9512+50															

REVISIONS	
NAME	DATE

ILLINOIS DEPARTMENT OF TRANSPORTATION
 F.A.I. 90/94 (DAN RYAN EXPRESSWAY)
 63rd ST TO 59th ST (FRONTAGE ROAD & RAMPS)

PROPOSED PROFILES
 NORTHBOUND AUXILIARY LANES

SCALE: H: 1"=20', V: 1"=5'
 DATE: October 29, 2004
 DRAWN BY: NJH
 CHECKED BY: RMC



PLAN	REVISIONS	DATE

PLAN	REVISIONS	DATE

m:\p4\68\civil\4-civil\90-94\proj\15 sheets\p4\68\0302.ctb