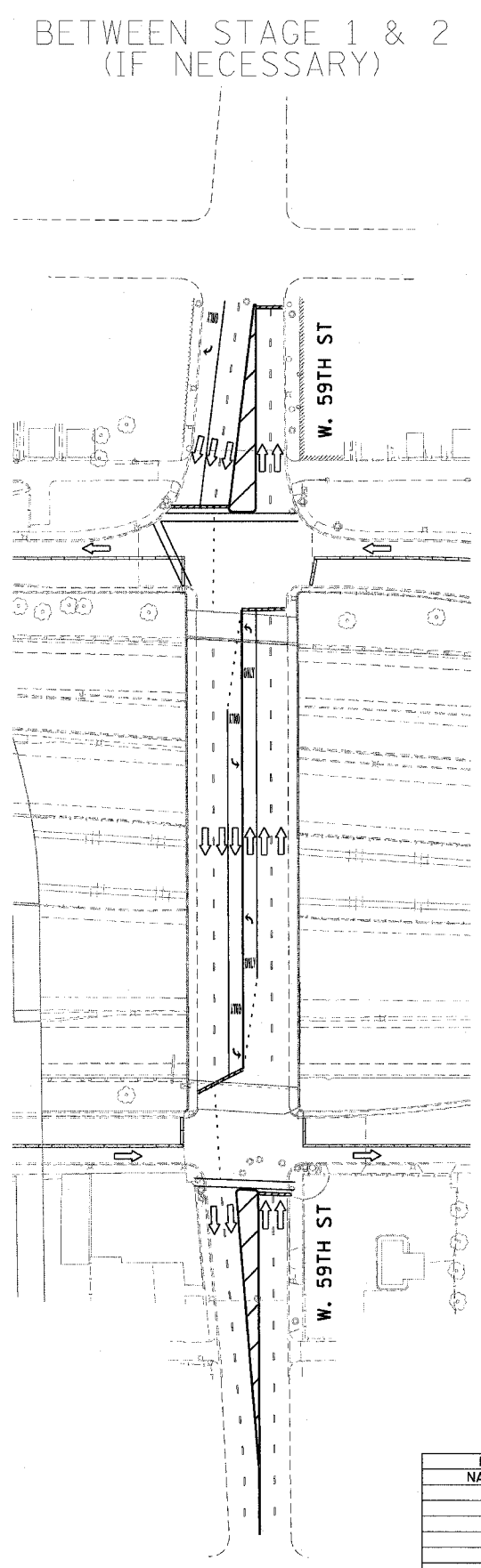
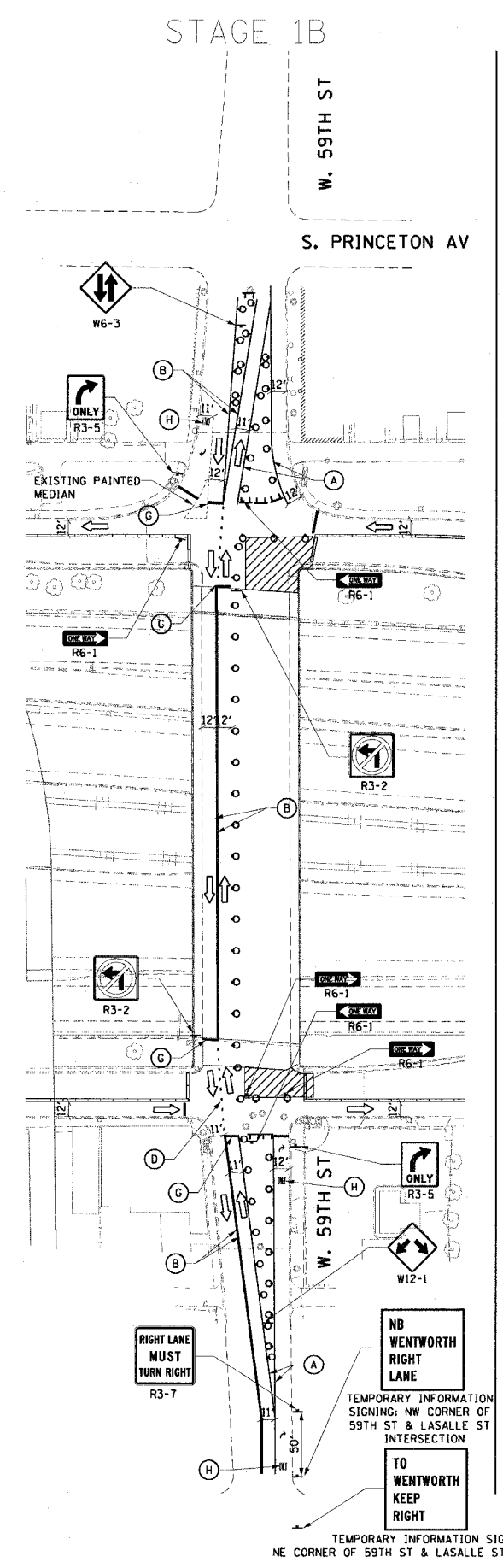
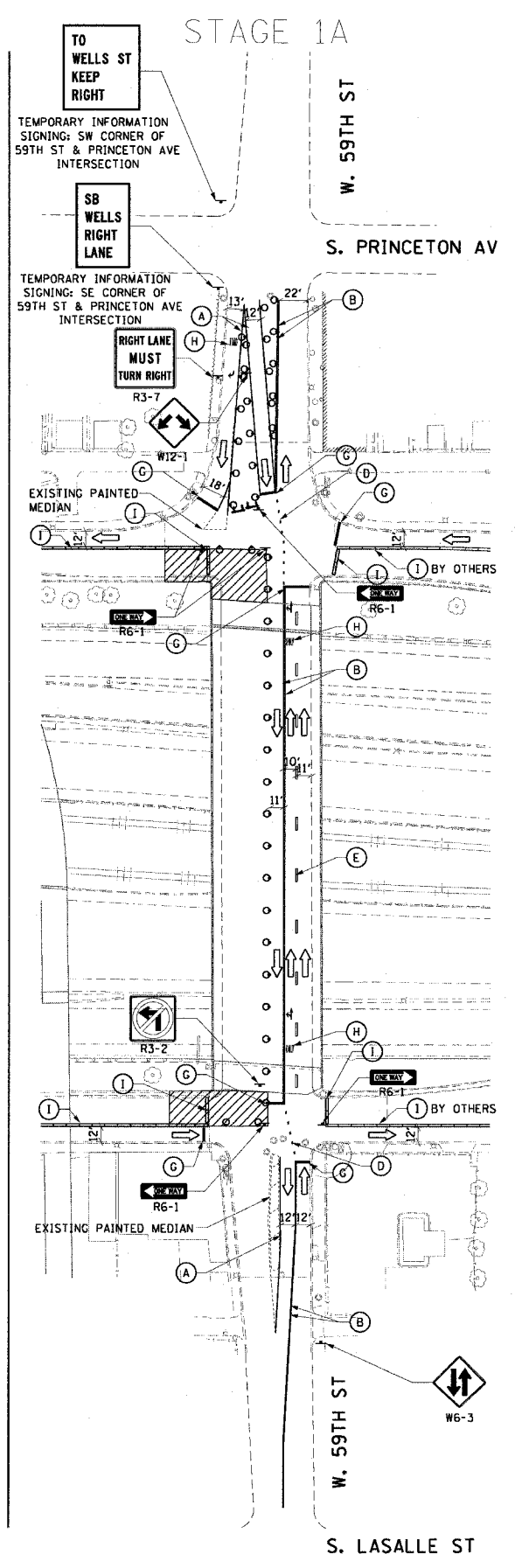
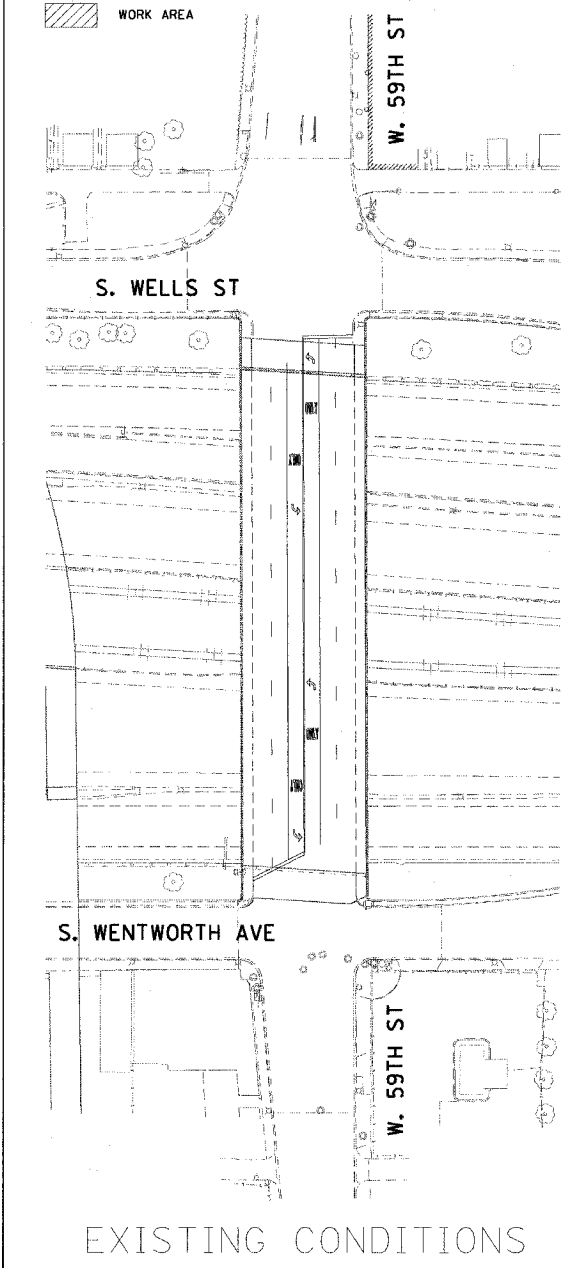


F.A.I. RTE.	SECTION	COUNTY	TOTAL SHEETS	SHEET NO.
90/94	2021-922PT.1-AC	COOK	460	69
STA.	TO STA.			
FED. ROAD DIST. NO. 1	ILLINOIS	FED. AID PROJECT		

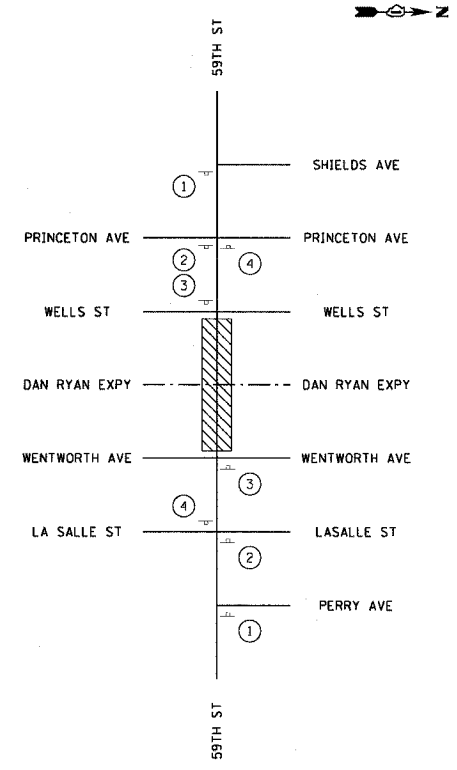
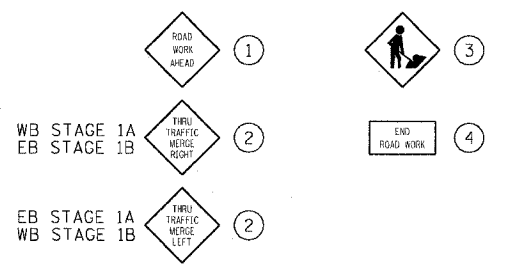
62693

LEGEND

- (A) TEMPORARY PAVEMENT MARKING 4", WHITE, SOLID
- (B) TEMPORARY PAVEMENT MARKING 4", YELLOW, SOLID
- (C) TEMPORARY PAVEMENT MARKING 4", WHITE, 2' DASH/6' SKIP
- (D) TEMPORARY PAVEMENT MARKING 4", YELLOW, 2' DASH/6' SKIP
- (E) TEMPORARY PAVEMENT MARKING 4", WHITE, 6' DASH/18' SKIP
- (F) TEMPORARY PAVEMENT MARKING 12", YELLOW, SOLID
- (G) TEMPORARY PAVEMENT MARKING 24", WHITE, SOLID
- (H) TEMPORARY PAVEMENT MARKING SYMBOLS
- (I) TEMPORARY CONCRETE BARRIER (CONTRACTOR FURNISHED)
- DRUM WITH STEADY BURNING LIGHT (25' SPACING, TYPICAL)
- T TYPE III BARRICADE
- ARROW BOARD
- ▨ WORK AREA



TYPICAL SIGN PLACEMENT



NOTES:

1. APPROACH PAVEMENT FOR THE 59TH STREET BRIDGE WILL NOT BE BUILT IN THIS CONTRACT.
2. MINIMUM SIGN SPACING OF 200'. PRECISE SIGN PLACEMENT NOT REPRESENTED. REFERENCE IDOT STANDARD 701601-03 FOR SPACING.
3. COMPLETION OF STAGE 1B SHOULD BE IMMEDIATELY FOLLOWED BY THE START OF STAGE 2A. IF STAGES 1A AND 1B ARE COMPLETE, AND THE SWITCH TO STAGE 2 IS NOT POSSIBLE FOR 7 OR MORE DAYS, ALL LANES OF THE BRIDGE ARE TO BE RESTORED AS SHOWN OR AS DIRECTED BY THE ENGINEER.
4. ALL MARKINGS SHOWN ARE PAVEMENT MARKING TAPE TYPE III.

REVISIONS	
NAME	DATE

ILLINOIS DEPARTMENT OF TRANSPORTATION
F.A.I. 90/94 (DAN RYAN EXPRESSWAY)
63rd ST TO 59th ST (FRONTAGE ROAD & RAMPS)

SUGGESTED STAGES OF CONSTRUCTION AND TRAFFIC CONTROL STAGE 1

SCALE: 1"=60'
DATE: October 29, 2004

DRAWN BY: SWANG
CHECKED BY: RMG

11/23/2004 08:45:57 PM