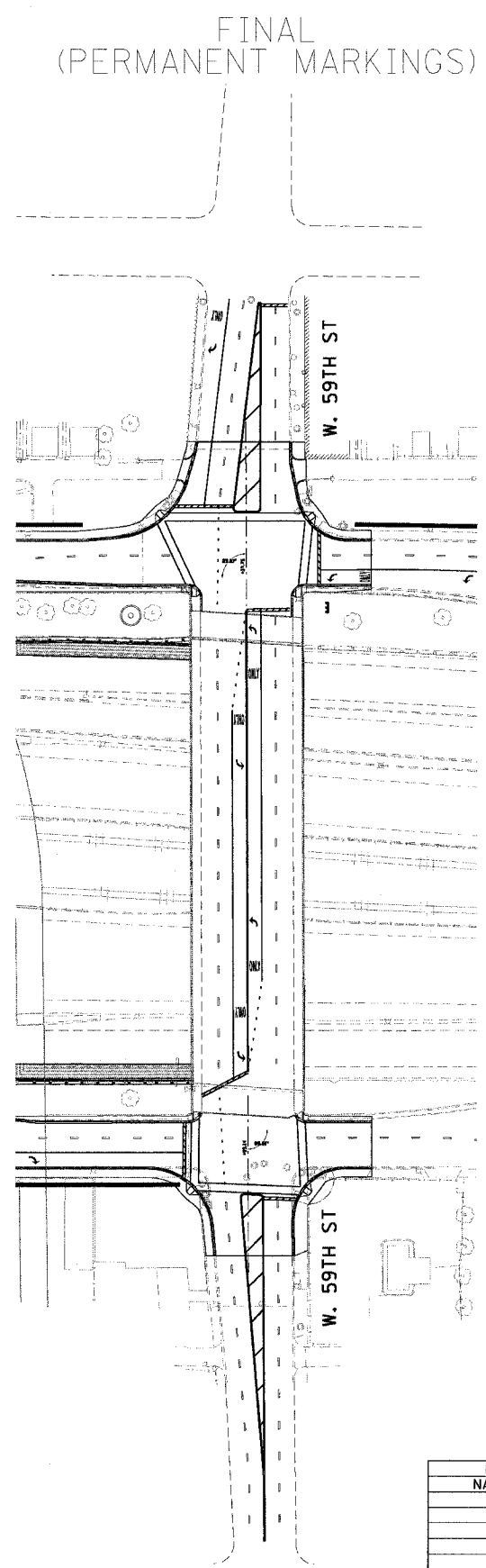
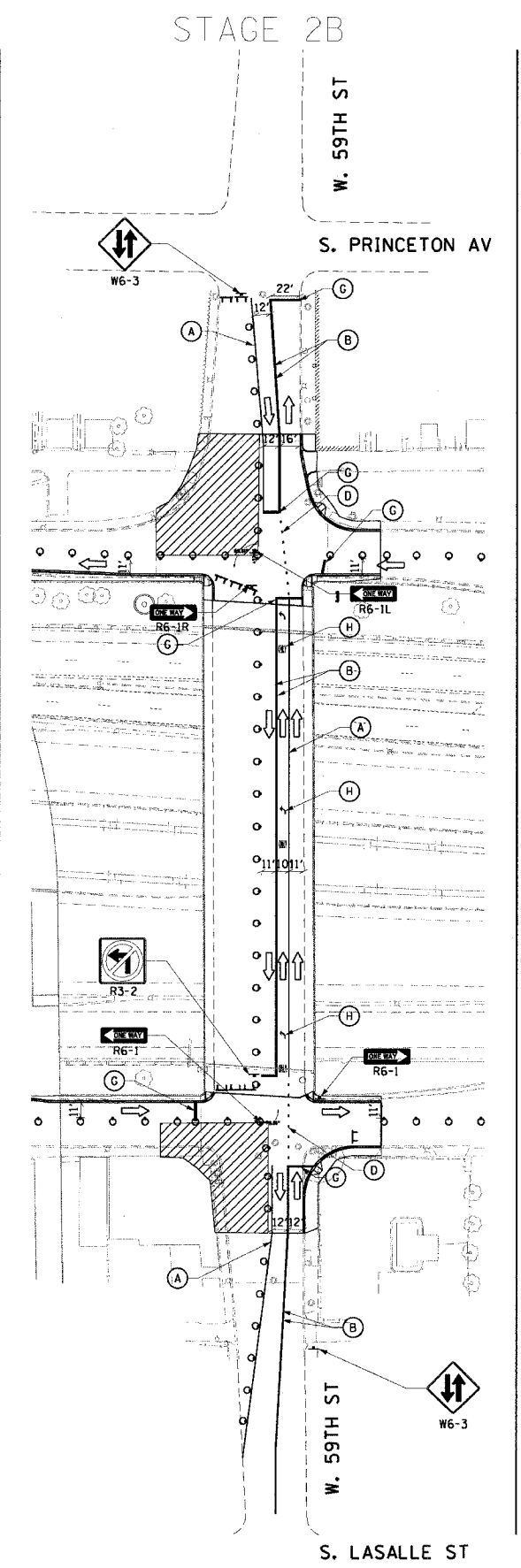
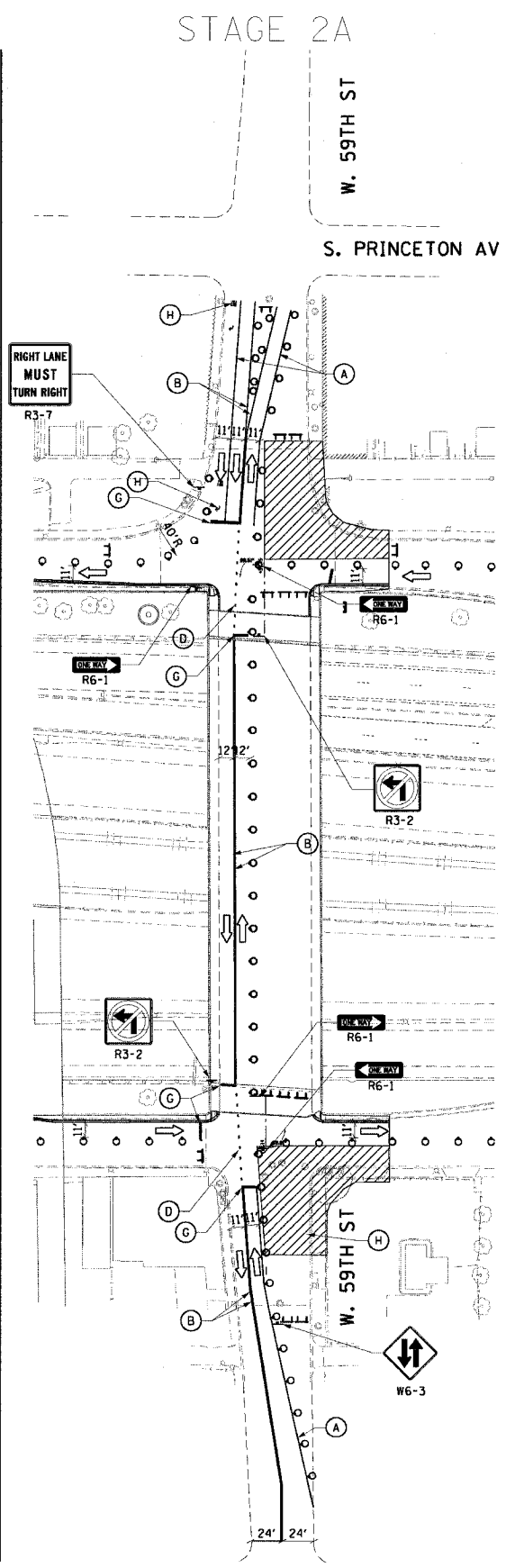
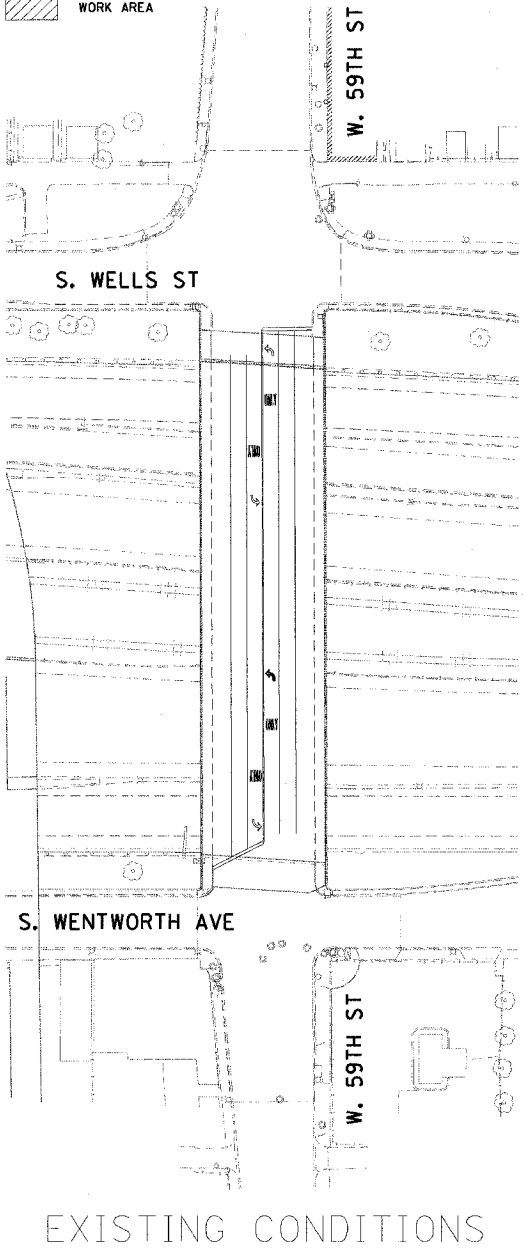


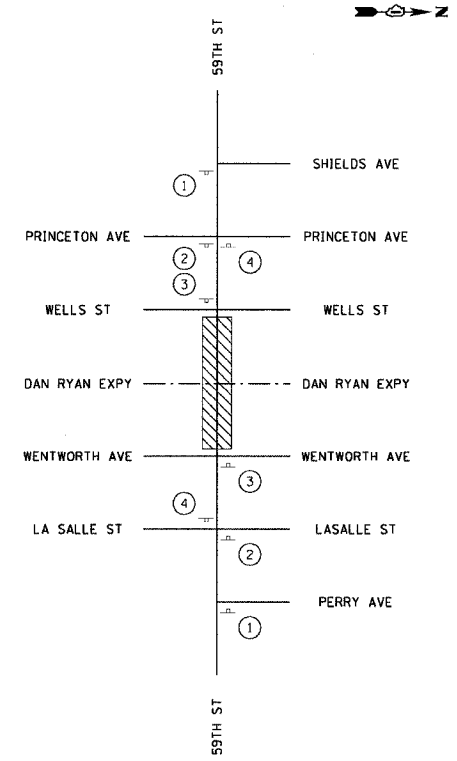
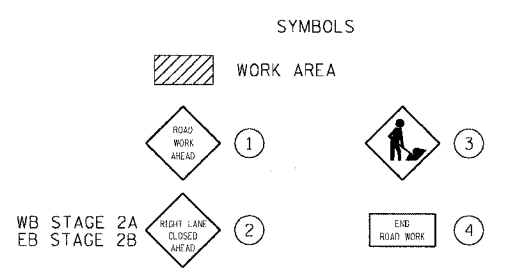
F.A.I. R.F.E.	SECTION	COUNTY	TOTAL SHEETS	SHEET NO.
90/94	2021-922PT.1-AC	COOK	460	73
STA.	TO STA.			
FED. ROAD DIST. NO. 1	ILLINOIS	FED. AID PROJECT		
62693				

LEGEND

- (A) TEMPORARY PAVEMENT MARKING 4", WHITE, SOLID
- (B) TEMPORARY PAVEMENT MARKING 4", YELLOW, SOLID
- (C) TEMPORARY PAVEMENT MARKING 4", WHITE, 2' DASH/6' SKIP
- (D) TEMPORARY PAVEMENT MARKING 4", YELLOW, 2' DASH/6' SKIP
- (E) TEMPORARY PAVEMENT MARKING 4", WHITE, 6' DASH/18' SKIP
- (F) TEMPORARY PAVEMENT MARKING 12", YELLOW, SOLID
- (G) TEMPORARY PAVEMENT MARKING 24", WHITE, SOLID
- (H) TEMPORARY PAVEMENT MARKING SYMBOLS
- (I) TEMPORARY CONCRETE BARRIER (CONTRACTOR FURNISHED)
- DRUM WITH STEADY BURNING LIGHT (25' SPACING, TYPICAL)
- TT TYPE III BARRICADE
- ARROW BOARD
- ▨ WORK AREA



TYPICAL SIGN PLACEMENT



- NOTES:
1. APPROACH PAVEMENT FOR THE 59TH STREET BRIDGE WILL NOT BE BUILT IN THIS CONTRACT.
 2. PERMANENT PAVEMENT MARKINGS WILL BE PLACED IN CONTRACT 62837.
 3. MINIMUM SIGN SPACING OF 200'. PRECISE SIGN PLACEMENT NOT REPRESENTED. REFERENCE IDOT STANDARD 701601-03 FOR SPACING.
 4. TEMPORARY MARKINGS SHOWN ARE PAVEMENT MARKING TAPE TYPE III.

REVISIONS	
NAME	DATE

ILLINOIS DEPARTMENT OF TRANSPORTATION
 F.A.I. 90/94 (DAN RYAN EXPRESSWAY)
 63rd ST TO 59th ST (FRONTAGE ROAD & RAMPS)

SUGGESTED STAGES OF CONSTRUCTION
 AND TRAFFIC CONTROL
 STAGE 2

SCALE: 1"=60'
 DATE: October 29, 2004

DRAWN BY: SWANG
 CHECKED BY: RMG

CTE ENGINEERS
 CONSOER TOWNSEND ENVIRONMENTAL ENGINEERS, INC.
 303 EAST WACKER DRIVE, SUITE 600
 CHICAGO, ILLINOIS 60601-5202, PHONE: (312) 938-0300