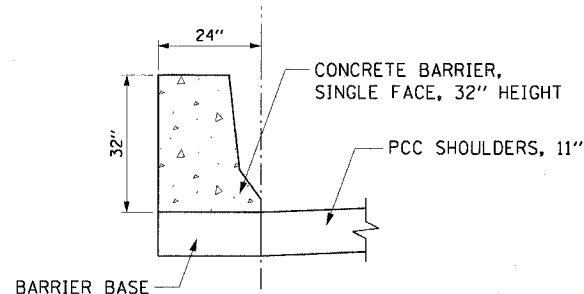
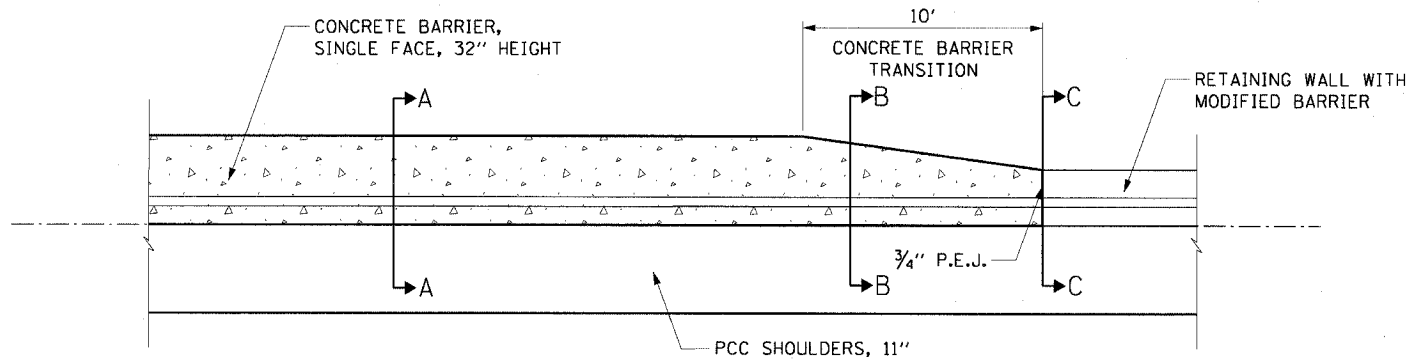


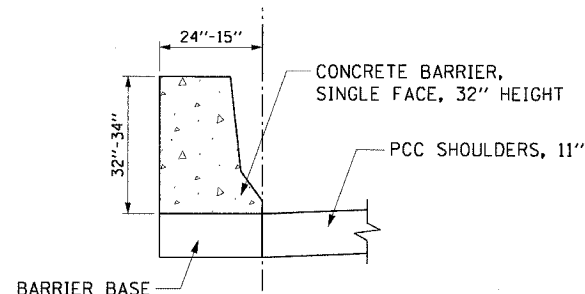
F.A.I. RTE.	SECTION	COUNTY	TOTAL SHEETS	SHEET NO.
90/94	2021-922PT-1-AC	COOK	460	123
STA.	TO STA.			
FED. ROAD DIST. NO. 1	ILLINOIS	FED. AID PROJECT		
			62693	

CONCRETE BARRIER TRANSITION TO RETAINING WALL WITH MODIFIED BARRIER N.T.S.

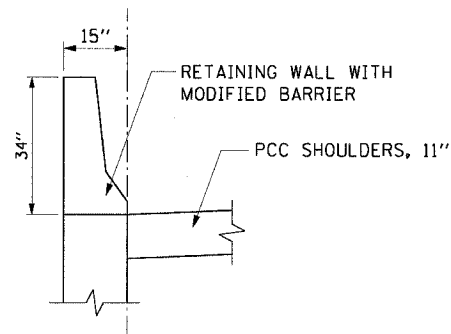
STA 9016+60.52



SECTION A-A
N.T.S.



SECTION B-B
N.T.S.



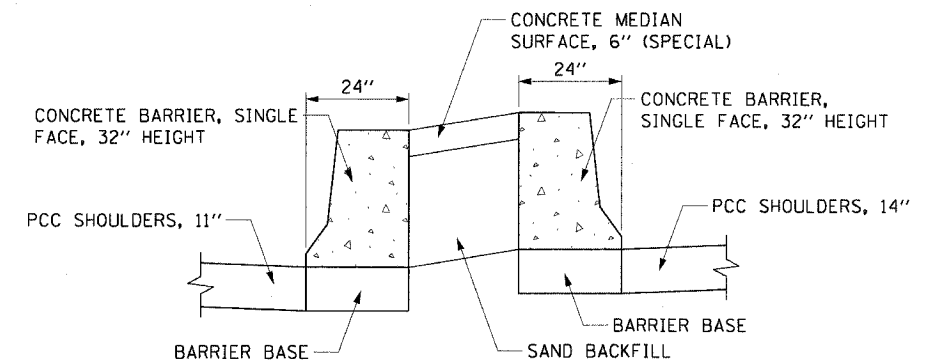
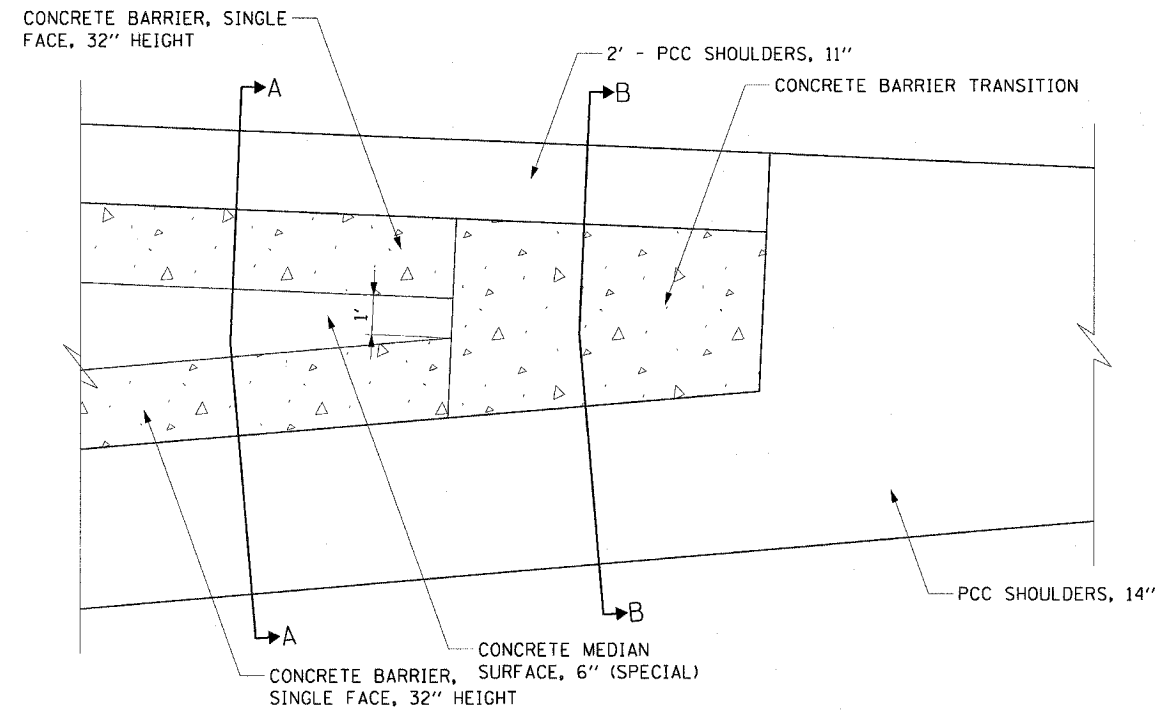
SECTION C-C
N.T.S.

NOTES:

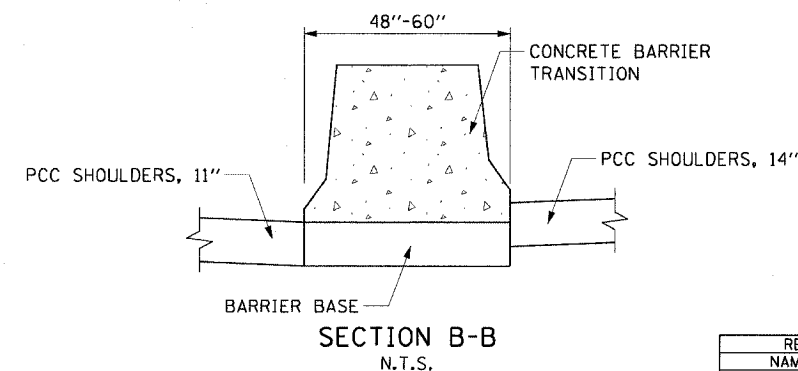
1. THE 3/4" PREFORMED EXPANSION JOINT SHALL BE INCLUDED IN THE COST OF CONCRETE BARRIER TRANSITION.
2. SEE ROADWAY DETAIL SHEET NO. 4 FOR CONCRETE BARRIER, SINGLE FACE, 32" HEIGHT DETAILS.
3. SEE STRUCTURAL DETAILS FOR RETAINING WALL WITH MODIFIED BARRIER DETAILS.

CONCRETE BARRIER TRANSITION N.T.S.

STA 9013+75.41



SECTION A-A
N.T.S.



SECTION B-B
N.T.S.

REVISIONS	
NAME	DATE

ILLINOIS DEPARTMENT OF TRANSPORTATION
F.A.I. 90/94 (DAN RYAN EXPRESSWAY)
63rd ST TO 59th ST (FRONTAGE ROAD & RAMPS)

**ROADWAY DETAILS
CONCRETE BARRIER TRANSITIONS**

SCALE: NONE
DATE: October 29, 2004
DRAWN BY: NJH
CHECKED BY: RMG