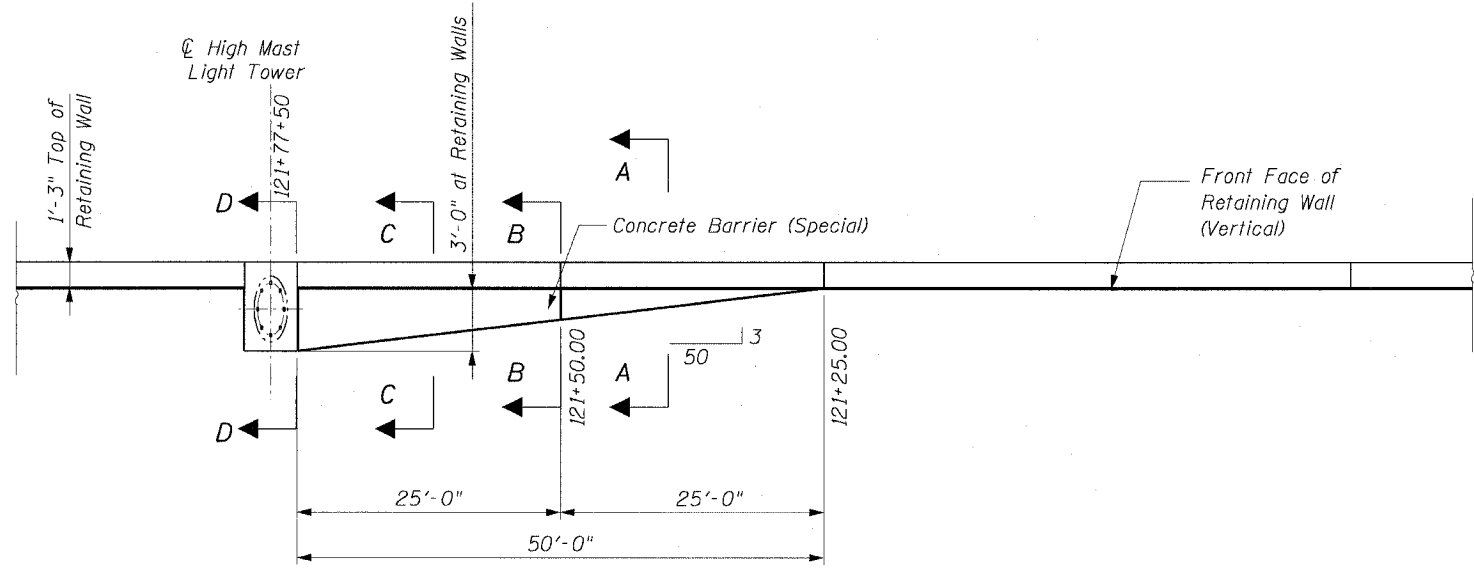
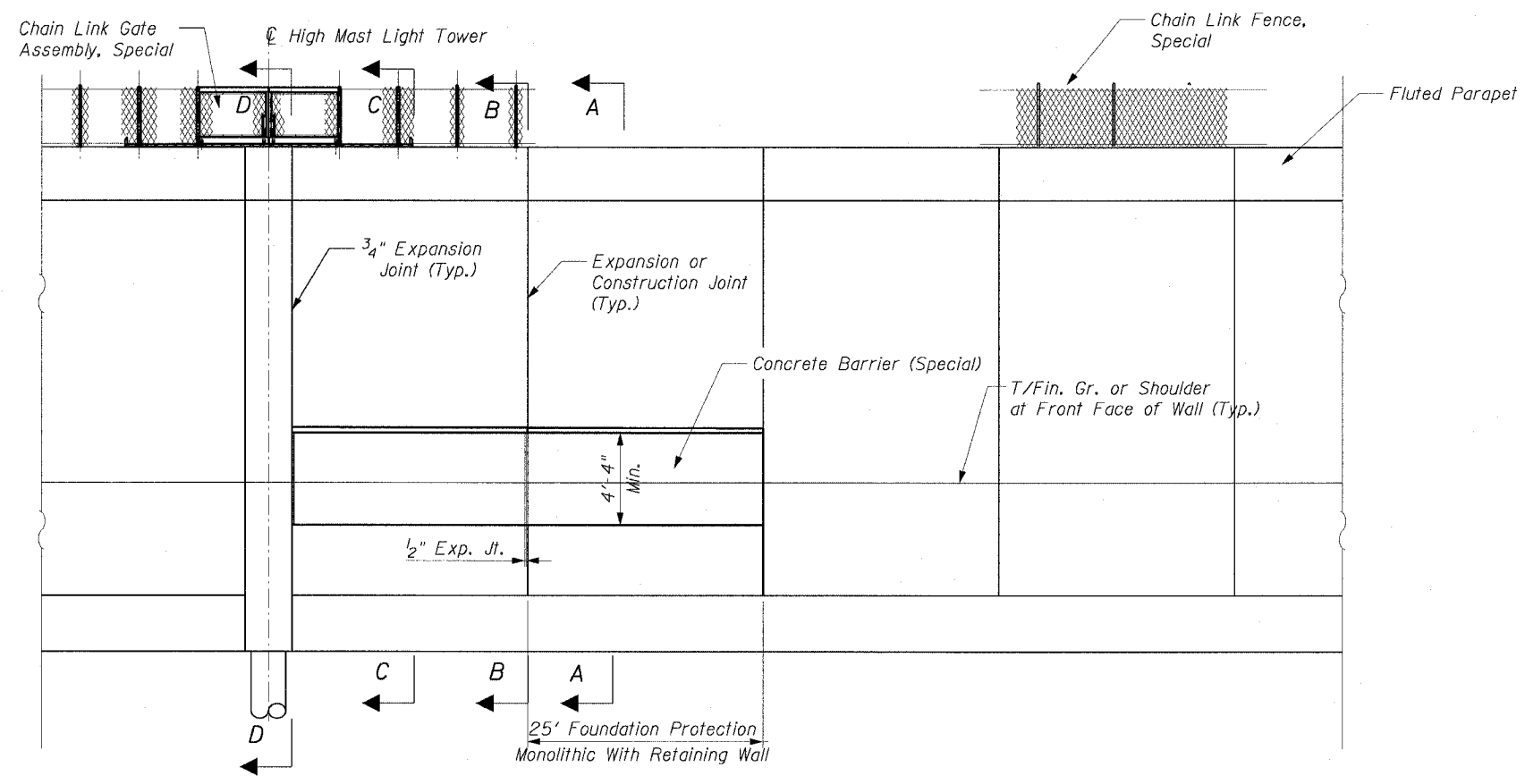


F.A.I. RTE.	SECTION	COUNTY	TOTAL SHEETS	SHEET NO.
90/94	2021-922PT.1-AC	COOK	460	125
STA.	TO STA.			
FED. ROAD DIST. NO. 1	ILLINOIS		FED. AID PROJECT	

62693



PLAN



ELEVATION
CONCRETE BARRIER (SPECIAL) DETAIL

STA 121+50.00 LT

NOTE
1. For Sections A-A, B-B, C-C And D-D
See Roadway Detail Sheet 9



REVISIONS	
NAME	DATE

ILLINOIS DEPARTMENT OF TRANSPORTATION
F.A.I. 90/94 (DAN RYAN EXPRESSWAY)
63rd ST TO 59th ST (FRONTAGE ROAD & RAMPS)
ROADWAY DETAILS
CONCRETE BARRIER (SPECIAL) DETAIL
WENTWORTH AVENUE STA. 121+50
SCALE: None
DATE: October 29, 2004
DRAWN BY: RSB
CHECKED BY: RS

10/29/2004 2:04:04 PM