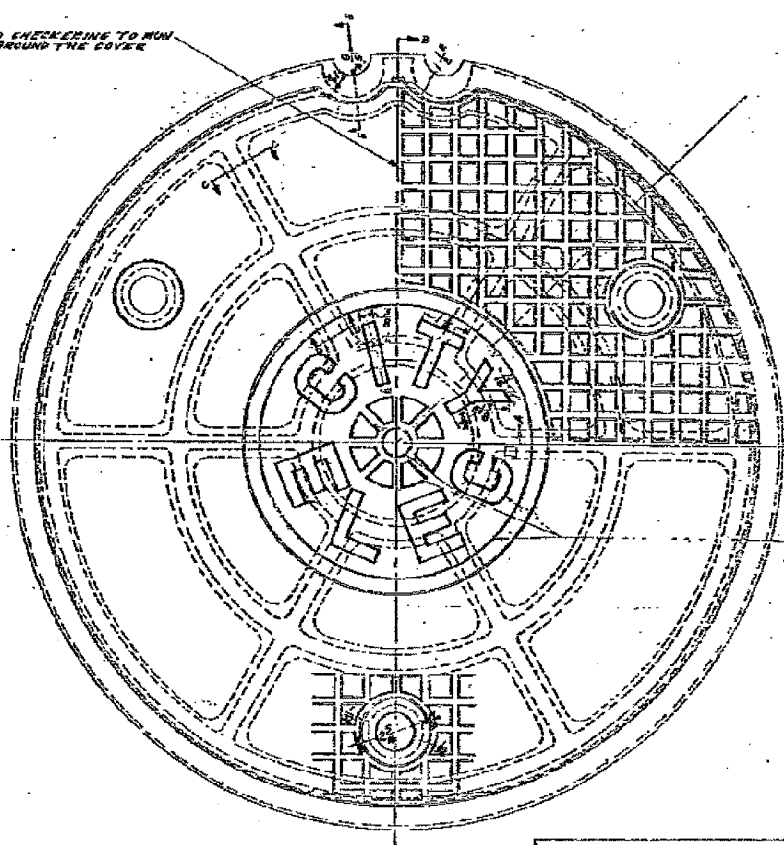
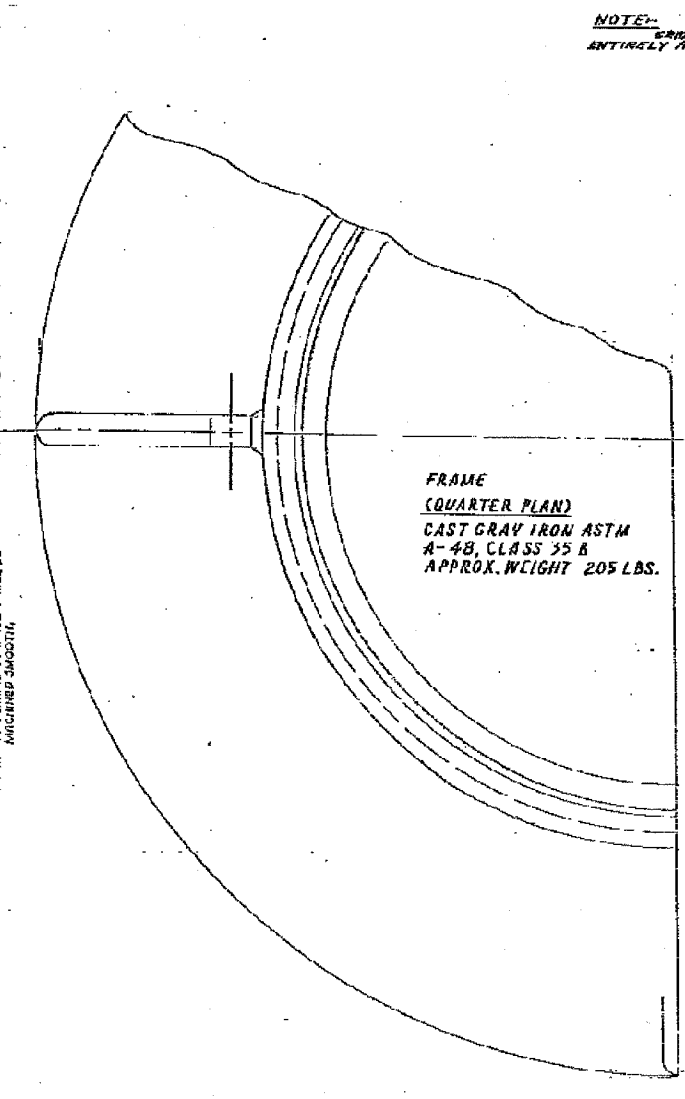
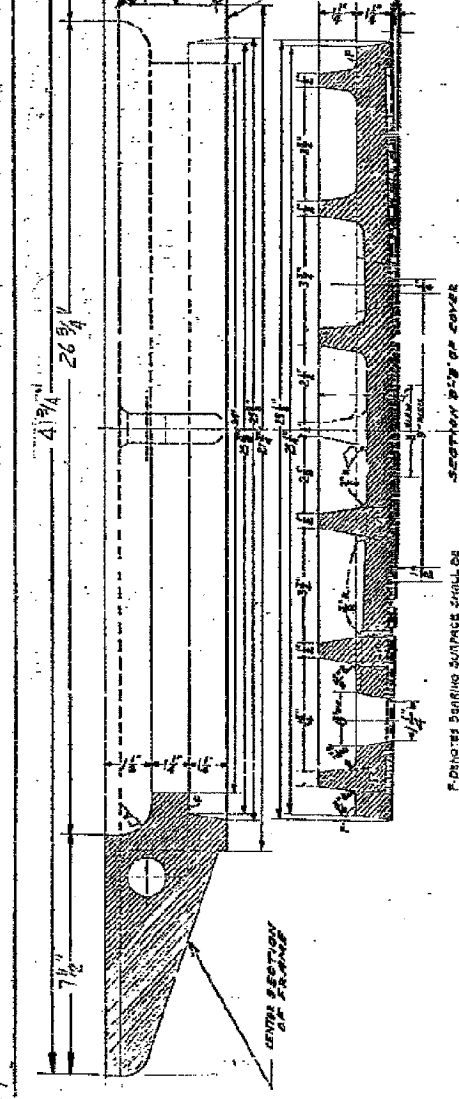
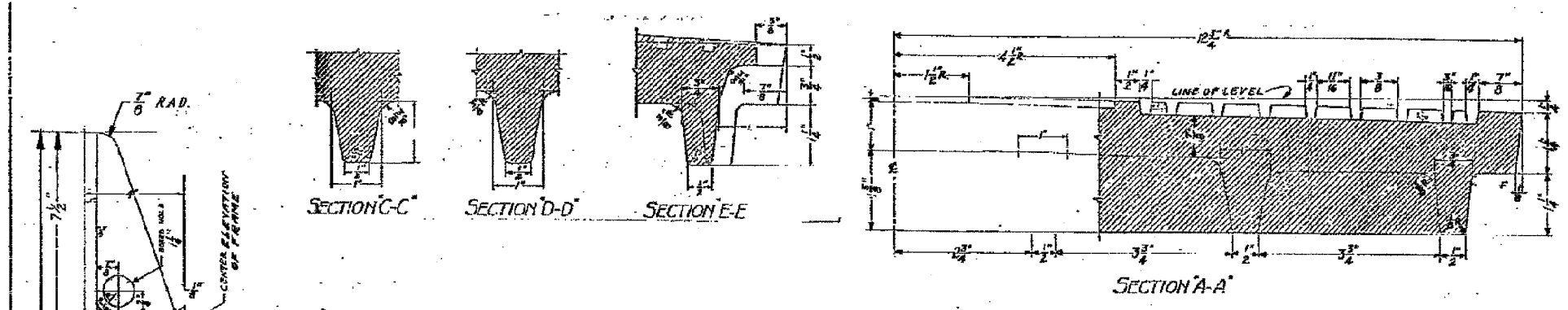


F.A.I. RTE.	SECTION	COUNTY	TOTAL SHEET NO.
90/94 2021-922PT.1-AC	COOK	460	167
STA.	TO STA.		
FED. ROAD DIST. NO. 1	ILLINOIS	FED. AID PROJECT	

62693



NOTE: THE TOP SURFACE OF THE COVERS AND ALL OF THE LETTERS TO BE RAISED IN BOLD TYPE SURFACE WITHIN THE 3" DIAMETER HOLE TO BE DRAFT ANGLE.

COMMODITY CODE  
FRAME  
COVER - 02 4574-5040

SUPERSEDES DWG # 10797  
DATED 2-10-35

24" DIA. CIRCULAR MANHOLE  
FRAME & COVER WITH 41 3/4" O.D.  
FRAME

CITY OF CHICAGO  
DEPARTMENT OF PUBLIC WORKS  
DIVISION OF ELECTRICAL ENGINEERING

DESIGNED BY: A. JOHNSON  
SUPERVISING ENGINEER

CHECKED BY: C. RESPIRO  
ELECTRICAL ENGINEER

DATE: 4-24-92

872

REVISIONS	
NAME	DATE

ILLINOIS DEPARTMENT OF TRANSPORTATION  
F.A.I. 90/94 (DAN RYAN EXPRESSWAY)  
63rd ST TO 59th ST (FRONTAGE ROAD & RAMPS)

BOE STANDARD DETAILS

SCALE: NOT TO SCALE  
DATE: October 29, 2004

DRAWN BY: HAR  
CHECKED BY: MS