

TOP VIEW

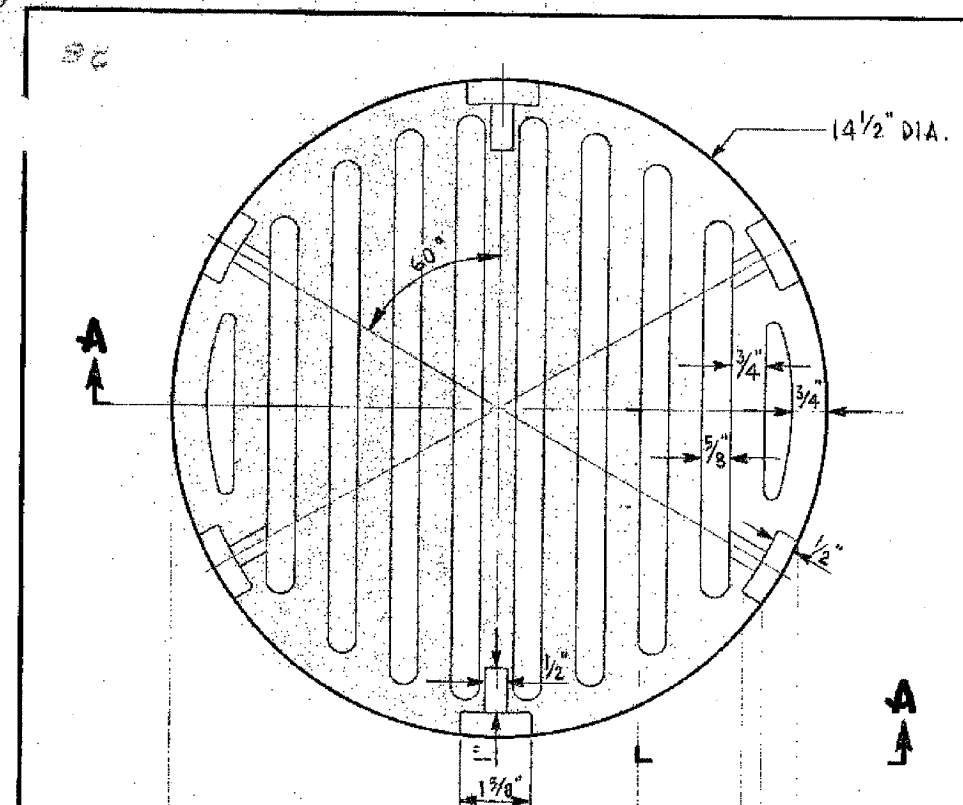
MATERIAL:

S.A.E. 1035 HOT ROLLED STEEL.
HOT GALVANIZED ZINC COATING
0.002 INCH THICK OVER ENTIRE
SURFACE.

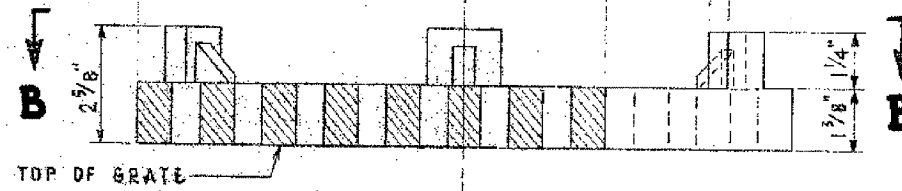
REVISED		CITY OF CHICAGO		
RE-DRAWN		DEPT. OF STREETS AND SANITATION		
A 11-30-73		BUREAU OF ELECTRICITY		
B		DIVISION OF ELECTRICAL ENGINEERING		
DRAWN	CHECKED	ENGINEER		
E. GERULIS	M. SHINE	J. O'CONNOR		
C				
D				
E				
F				
G				
SIZE 8 1/2" X 14"		SCALE: 3/8" = 1"	DATE 11-30-73	

PULLING IRON

7878



BOTTOM VIEW B-B



SIDE VIEW A-A

MATERIAL: CAST IRON
APPROX. WT. 34 LBS.

REVISED		CITY OF CHICAGO		
A 11-30-73		DEPT. OF STREETS AND SANITATION		
B		BUREAU OF ELECTRICITY		
C		DIVISION OF ELECTRICAL ENGINEERING		
DRAWN	CHECKED	ENGINEER		
E. GERULIS	M. SHINE	J. O'CONNOR		
D				
E				
F				
G				
SIZE 8 1/2" X 14"		SCALE: 3/8" = 1"	DATE 11-30-73	

GRATE FOR SUMP

10792

REVISIONS	
NAME	DATE

ILLINOIS DEPARTMENT OF TRANSPORTATION
F.A.I. 90/94 (DAN RYAN EXPRESSWAY)
63rd ST TO 59th ST (FRONTAGE ROAD & RAMPS)

BOE STANDARD DETAILS

SCALE: NOT TO SCALE
DATE: October 29, 2004
DRAWN BY: HAR
CHECKED BY: MS