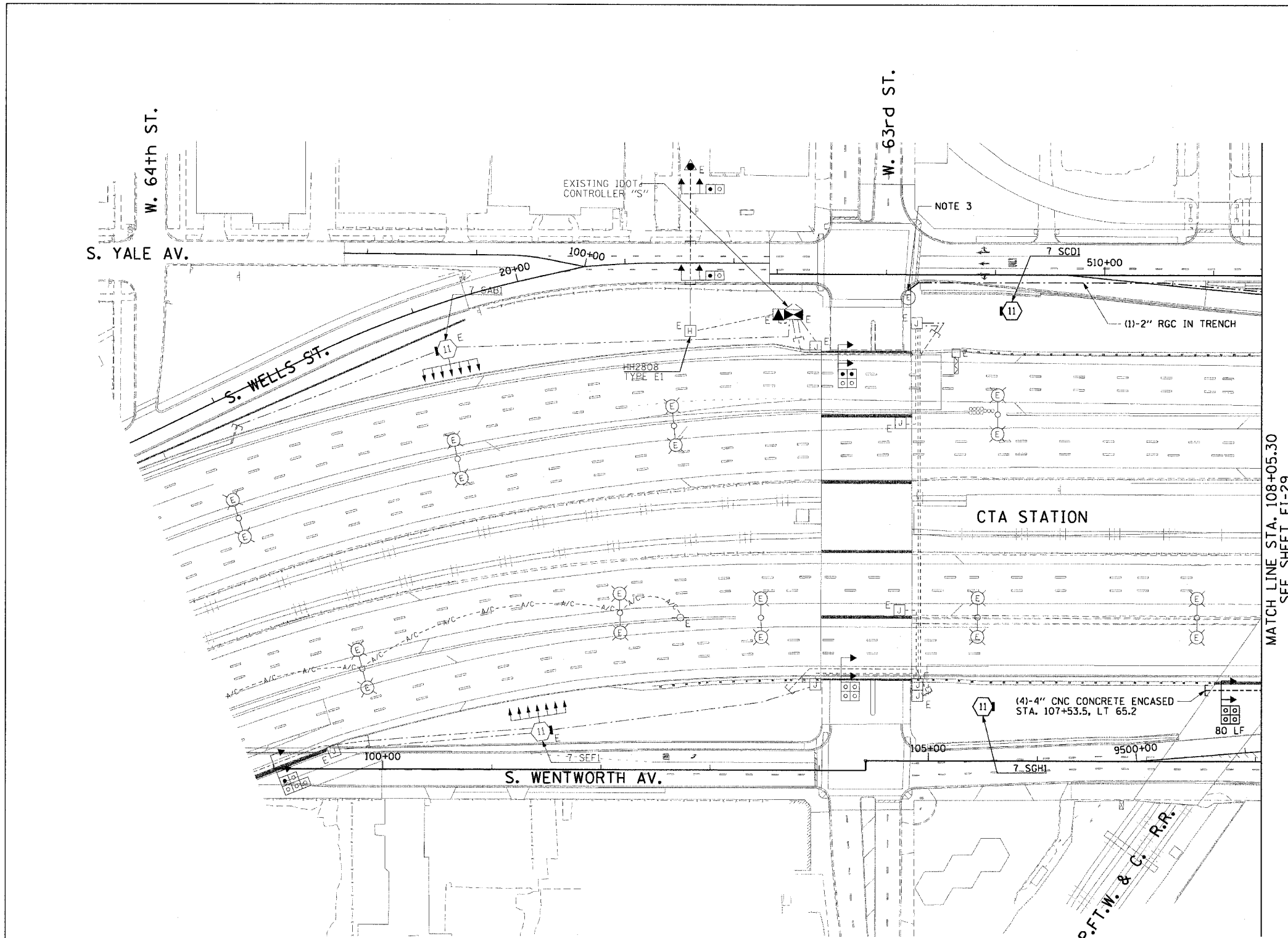


F.A.I. RYE.	SECTION	COUNTY	TOTAL SHEETS	SHEET NO.
90/94	2021-922PT.1-AC	COOK	460	177
STA. 104+42.66		TO STA. 108+05.30		
FED. ROAD DIST. NO. 1		ILLINOIS	FED. AID PROJECT	

62693

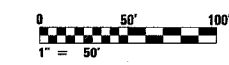
**NOTES:**

- SEE DRAWINGS EI-100 AND EI-101 FOR ELECTRICAL SYMBOLS AND ABBREVIATIONS.
- SEE DRAWING ES-01 FOR HIGH MAST LIGHT TOWER FOUNDATION SCHEDULE.
- EXISTING CITY MANHOLE MUST BE DRILLED TO FACILITATE INSTALLATION OF 2" RGC CONDUIT AS SHOWN.
- COORDINATE ALL WORK WITH CIVIL WORK, STRUCTURAL WORK, SUGGESTED STAGES OF CONSTRUCTION AND TRAFFIC CONTROL PLANS, AND IDOT CONTRACT NOS. 62583 & 62840.
- DUCTBANKS INSTALLED AT THE LOCATIONS LISTED IN THE TABLE MUST BE INSTALLED AT THE SPECIFIED DEPTH TO AVOID CONFLICTS WITH CIVIL AND STRUCTURAL WORK IN THIS CONTRACT AND FUTURE CONTRACTS. WHEN TWO LOCATIONS ARE LISTED, THE DUCTBANK MUST BE INSTALLED AT THE GIVEN DEPTH FOR THE ENTIRE DISTANCE BETWEEN LOCATIONS. DUCTBANK INSTALLED OUTSIDE OF THE AREAS LISTED IN THE TABLE MUST BE INSTALLED SUCH THAT ELEVATION TRANSITIONS BETWEEN THE DESIGNATED POINTS ARE SMOOTH AND GRADUAL. AT NO POINT ALONG THE RUN SHALL THE DUCTBANK BE INSTALLED ABOVE THE DEPTHS INDICATED ON DRAWING EI-102.



MATCH LINE STA. 108+05.30  
SEE SHEET EI-29

LOCATION #1	LOCATION #2	TOP OF DUCTBANK ELEVATION, CCD
107+53.5, LT 65.2	-	1.50
-	-	-
-	-	-
-	-	-
-	-	-
-	-	-
-	-	-
-	-	-



EI-28

REVISIONS	
NAME	DATE

ILLINOIS DEPARTMENT OF TRANSPORTATION  
F.A.I. 90/94 (DAN RYAN EXPRESSWAY)  
63rd ST TO 59th ST (FRONTAGE ROAD & RAMPS)  
ELECTRICAL INFRASTRUCTURE PLANS

SCALE: 1"=50'  
DATE: October 29, 2004

DRAWN BY: CJM  
CHECKED BY: WDS