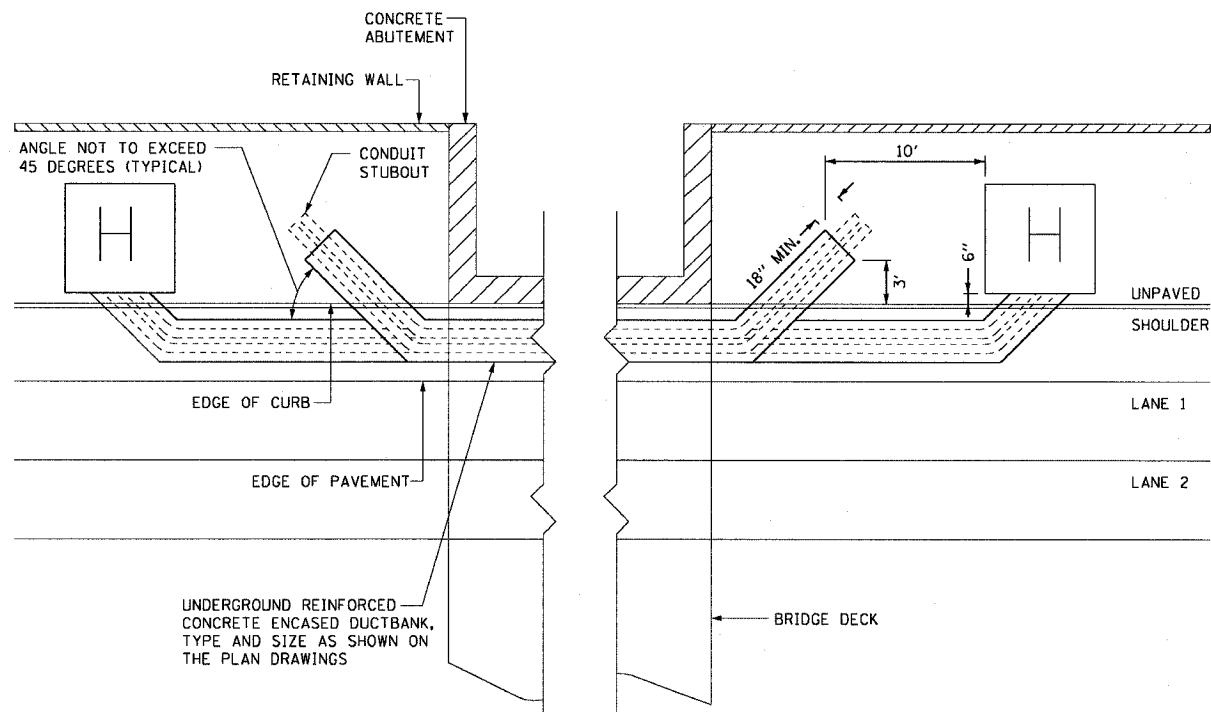


F.A.I. RTE.	SECTION	COUNTY	TOTAL SHEETS	SHEET NO.
90/94	2021-922PT.1-AC	COOK	460	184
STA.	TO STA.			
FED. ROAD DIST. NO. 1	ILLINOIS	FED. AID PROJECT		

62693

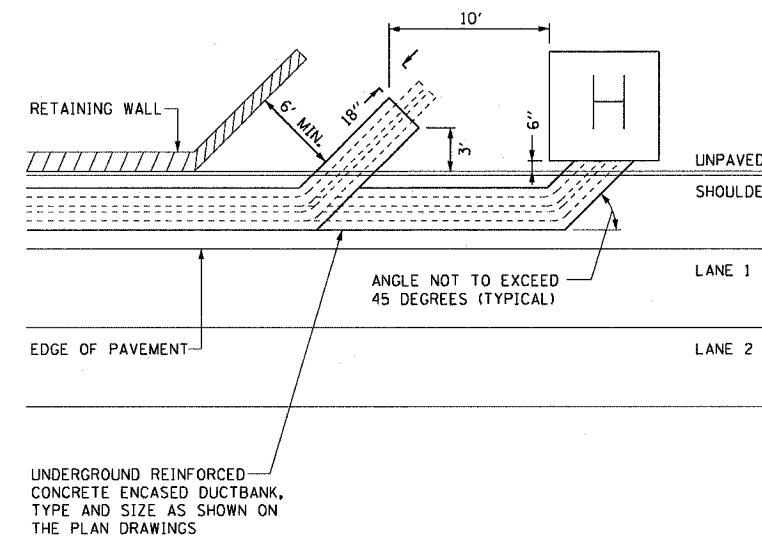
NOTES:

1. SEE DRAWINGS EI-100 AND EI-101 FOR ELECTRICAL SYMBOLS AND ABBREVIATIONS.
2. DIMENSIONS SHOWN ON THIS DRAWING ARE TYPICAL FOR MOST INSTALLATIONS. DIMENSIONS AND/OR STATION NUMBERS SPECIFIED ON THE PLAN DRAWINGS OR HANDHOLE DETAIL DRAWINGS WILL SUPERCEDE THE DIMENSIONS SHOWN ON THIS DRAWING.
3. SEE DRAWING EI-102 FOR CONDUIT DUCTBANK DETAILS.



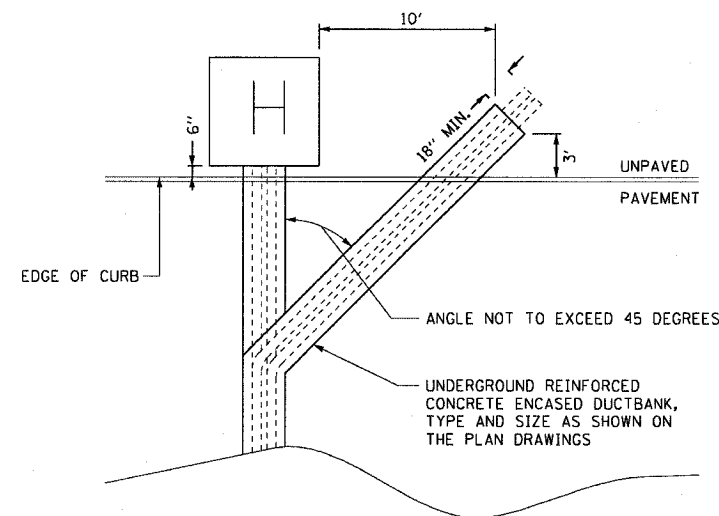
DUCTBANK INSTALLATION DETAIL ACROSS BRIDGE

NOT TO SCALE



DUCTBANK INSTALLATION DETAIL ALONGSIDE RETAINING WALL

NOT TO SCALE



DUCTBANK INSTALLATION DETAIL ACROSS PAVEMENT

NOT TO SCALE

EI-103

REVISIONS	
NAME	DATE

ILLINOIS DEPARTMENT OF TRANSPORTATION
F.A.I. 90/94 (DAN RYAN EXPRESSWAY)
63rd ST TO 59th ST (FRONTAGE ROAD & RAMPS)

**ELECTRICAL DUCTBANK DETAILS
IN SHOULDER AND UNDER PAVEMENT**

SCALE: NOT TO SCALE
DATE: October 29, 2004

DRAWN BY: BHP
CHECKED BY: WDS

10/21/2004 02:25:56 PM