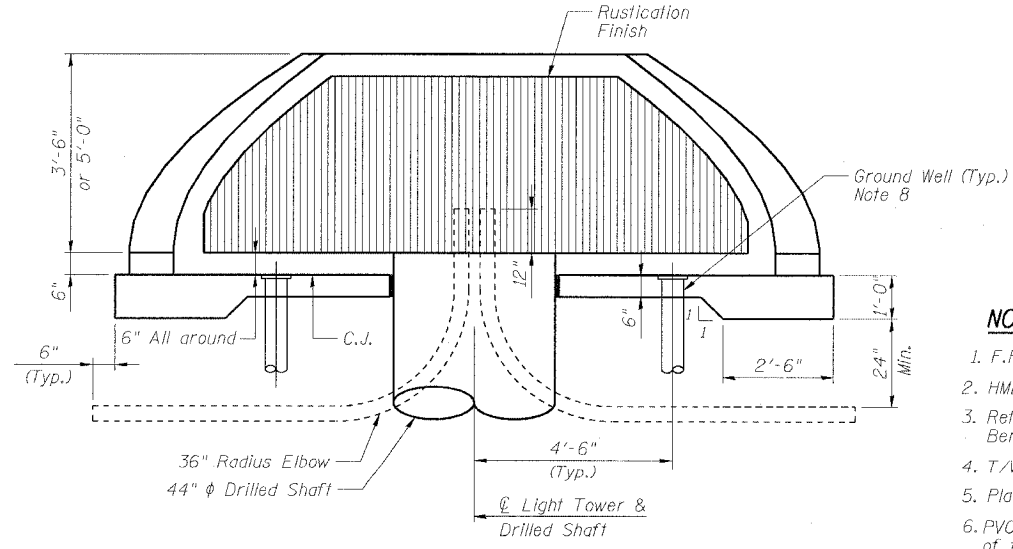


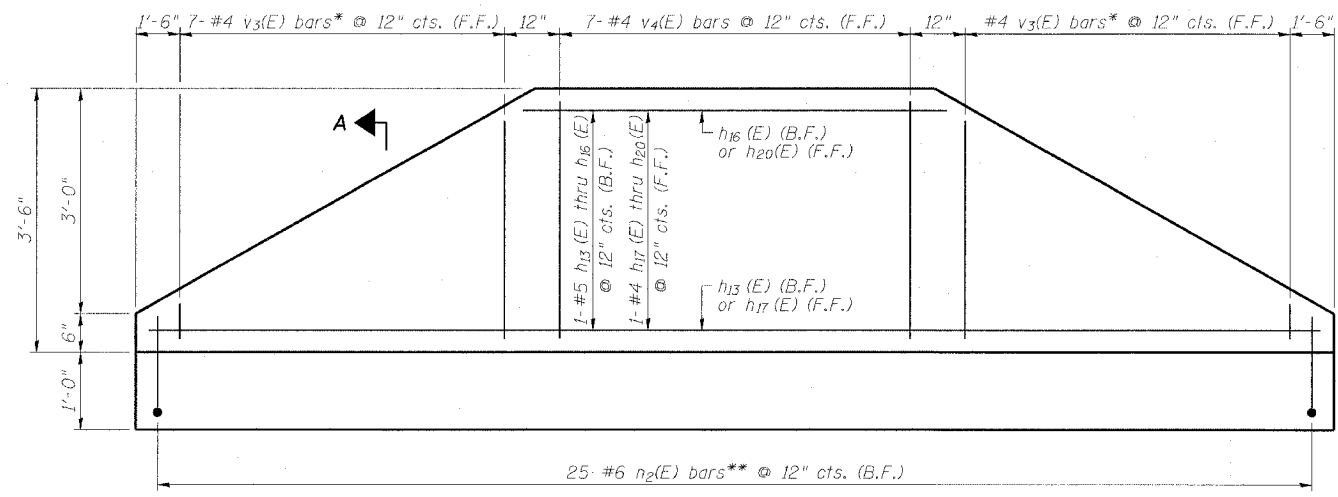
PLAN VIEW

Place Bars w₁(E) thru w₅(E) @ 12" cts., Bott. of Pad



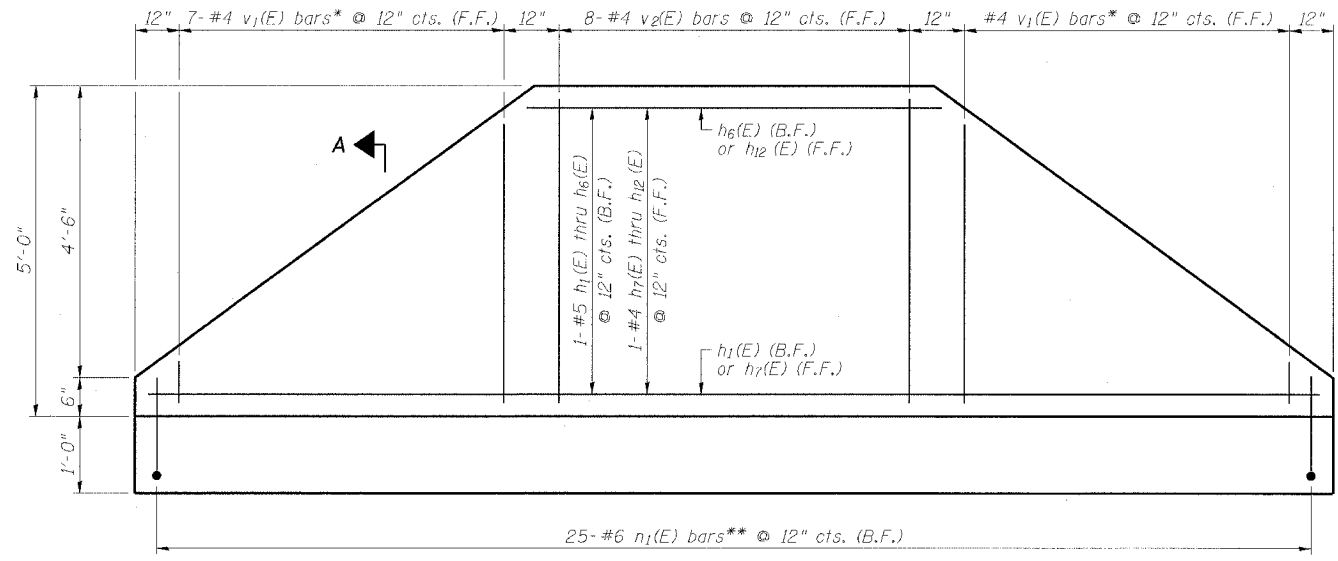
ELEVATION VIEW

(HMLT not shown for clarity)



3'-6" RETAINING WALL ELEVATION (PROJECTED)

(Looking at F.F.)



5'-0" RETAINING WALL ELEVATION (PROJECTED)

(Looking at F.F.)

NOTES

1. F.F. and B.F. denote Front Face and Back Face, respectively.
2. HMLT denotes High Mast Light Tower.
3. Refer to HMLT Service Pad & Retaining Wall Details 2 for Bar Bending Diagrams, Bill of Material, Bar Sections and Details.
4. T/Wall slope is constant along the arc of any given radius.
5. Place horizontal tails of n₁(E) & n₂(E) bars radially.
6. PVC sleeves must be extended 6 inches beyond the edge of the concrete pad.
7. PVC sleeve for CCTV camera power feed (future). Sleeve must be capped unless noted otherwise on the plans.
8. Install ground wells 4'-6" as measured from centerline of the HMLT to centerline of the well. Adjust service pad reinforcement to miss wells.

* Cut to fit, use remainder of bars at opposite end of wall. See Cutting Diagram, Sheet E1-105B.
** Cut to fit where necessary, discard excess.

* Cut to fit, use remainder of bars at opposite end of wall. See Cutting Diagram, Sheet E1-105B.
** Cut to fit where necessary, discard excess.

REVISIONS	
NAME	DATE

ILLINOIS DEPARTMENT OF TRANSPORTATION
F.A.I. 90/94 (DAN RYAN EXPRESSWAY)
63rd ST TO 59th ST (FRONTAGE ROAD & RAMPS)
HIGH MAST LIGHT TOWER SERVICE PAD & RETAINING WALL DETAILS 1

SCALE: NOT TO SCALE
DATE: October 29, 2004
DRAWN BY:
CHECKED BY: