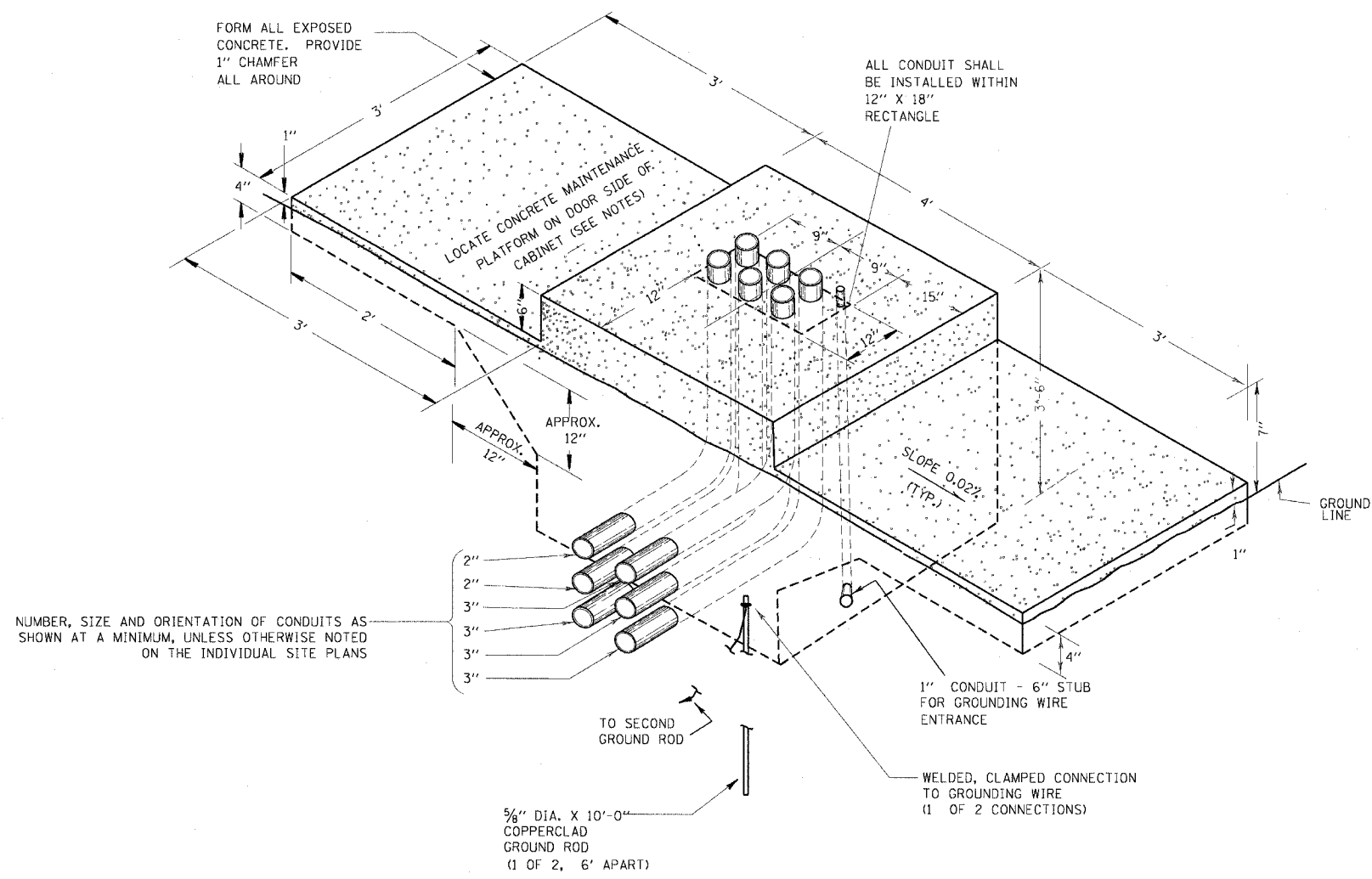


F.A.I. RTE.	SECTION	COUNTY	TOTAL SHEETS	SHEET NO.
90/94	2021-922PT.1-AC	COOK	460	192
STA.	TO STA.			
FED. ROAD DIST. NO. 1	ILLINOIS	FED. AID PROJECT		

62693



TYPICAL DETAIL
CONCRETE BASE, CONTROLLER CABINET

NOTES

1. INSTALL FOUR 3/4 INCH DIAMETER X 12 INCH MINIMUM LENGTH APPROVED J-BOLTS TO ANCHOR THE CABINET BASES. THE ANCHOR BOLTS SHALL BE GALVANIZED STEEL AND LOCATED AS DIRECTED BY THE ENGINEER TO PROPERLY ANCHOR THE CONTROL CABINET TO THE BASE.
2. CONTROL CABINET BASE TOP SURFACES SHALL BE TROWEL FINISHED AND LEVEL. PRIOR TO CABINET INSTALLATION, LEVELING OF TOP SURFACES AFTER CONCRETE BASE HAS CURED SHALL ONLY BE ACCOMPLISHED BY GRINDING.
3. MAINTENANCE PLATFORMS ARE NOT REQUIRED WHEN THE SURROUNDING AREA IS PAVED.
4. CONCRETE FORM DEPTH BELOW FINISHED GRADE SHALL BE 6" MAXIMUM. CONCRETE FORMS SHALL BE REMOVED AFTER CONCRETE HAS SET.
5. CONCRETE MAINTENANCE PLATFORM AND CABINET FOUNDATION FOR CABINET SHALL BE A MONOLITHIC POUR.
6. WHEN REQUIRED TO CONNECT NONMETALLIC CONDUIT TO METALLIC CONDUIT, ONLY ADAPTER FITTINGS, U.L. LISTED FOR ELECTRICAL USE, SHALL BE USED.
7. CONDUIT HEIGHT ABOVE THE CONCRETE BASE SHALL BE 3 INCH.
8. MINIMUM BENDING RADIUS OF CONDUIT = 6 X THE DIAMETER.
9. ALL METALLIC CONDUIT ENDS SHALL BE REAMED AND THREADED.
10. CAP ALL BELOW GRADE METALLIC CONDUIT ENDS IN WHICH WIRE OR CABLE IS NOT BEING INSTALLED.
11. PLUG ALL BELOW GRADE NONMETALLIC CONDUIT ENDS IN WHICH WIRE OR CABLE IS NOT BEING INSTALLED.
12. ALL CONDUIT ENDS AT THE TOP OF CONCRETE BASES SHALL BE CAPPED IF METALLIC OR PLUGGED IF NONMETALLIC IMMEDIATELY AFTER PLACEMENT AND BEFORE CONCRETE IS POURED. CONDUITS IN WHICH WIRE OR CABLE IS NOT BEING INSTALLED SHALL REMAIN CAPPED OR PLUGGED.
13. ALL METALLIC CONDUIT ENDS AT TOP OF CONCRETE BASES SHALL HAVE BUSHINGS AND ALL NON METALLIC CONDUIT ENDS AT TOP OF CONCRETE BASES SHALL HAVE END BELLS.

**Edwards
AND Kelcey**
ONE NORTH FRANKLIN
CHICAGO, IL 60606
PHONE: (312) 251-3000
FAX: (312) 251-3015
WEB: WWW.EKCORP.COM

REVISIONS	
NAME	DATE

ILLINOIS DEPARTMENT OF TRANSPORTATION
F.A.I. 90/94 (DAN RYAN EXPRESSWAY)
63rd ST TO 59th ST (FRONTAGE ROAD & RAMPS)

**CONCRETE FOUNDATION,
TYPE 1 DETAIL (FOR CABINET,
MODEL 334)**

SCALE: NTS
DATE: October 29, 2004

DRAWN BY: MJL
CHECKED BY: AAP

EI-108

m:\940468\elect\4-4-04\915\contract 90\900002828.rvt 10/21/2004 02:25:59 PM