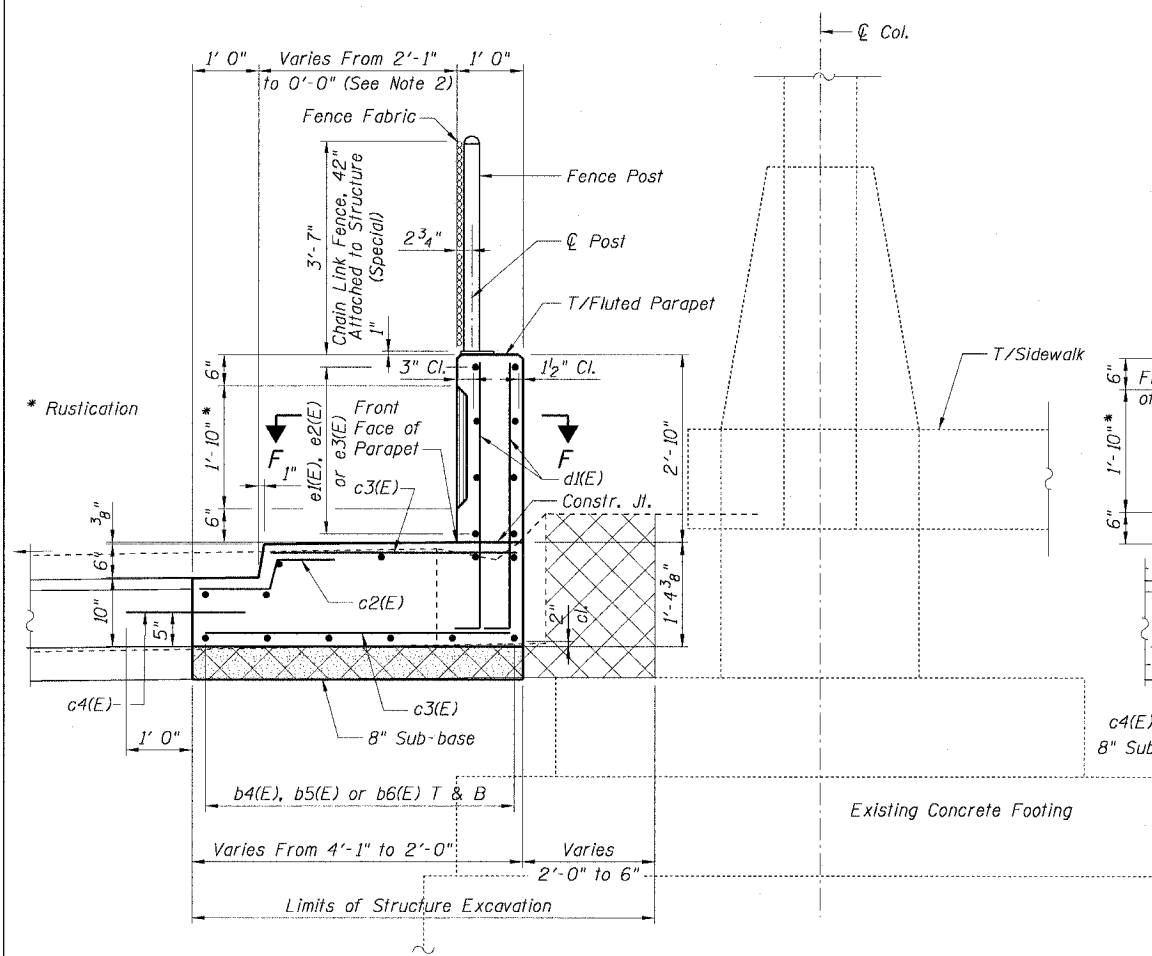


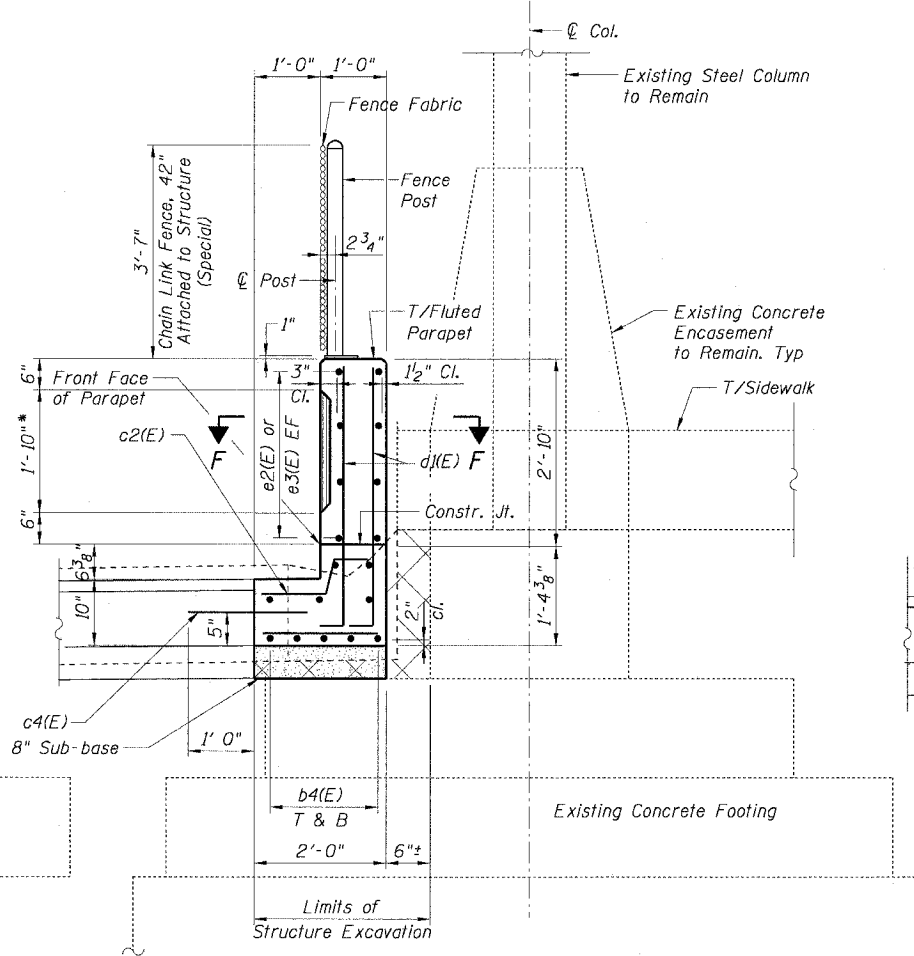
STATE OF ILLINOIS  
DEPARTMENT OF TRANSPORTATION

F.A.I. RTE.	SECTION	COUNTY	TOTAL SHEETS	SHEET NO.
90/94	2021-922PT.1-AC	COOK	460	211
STA.	TO STA.			
FED. ROAD DIST. NO. 1	ILLINOIS	FED. AID PROJECT		

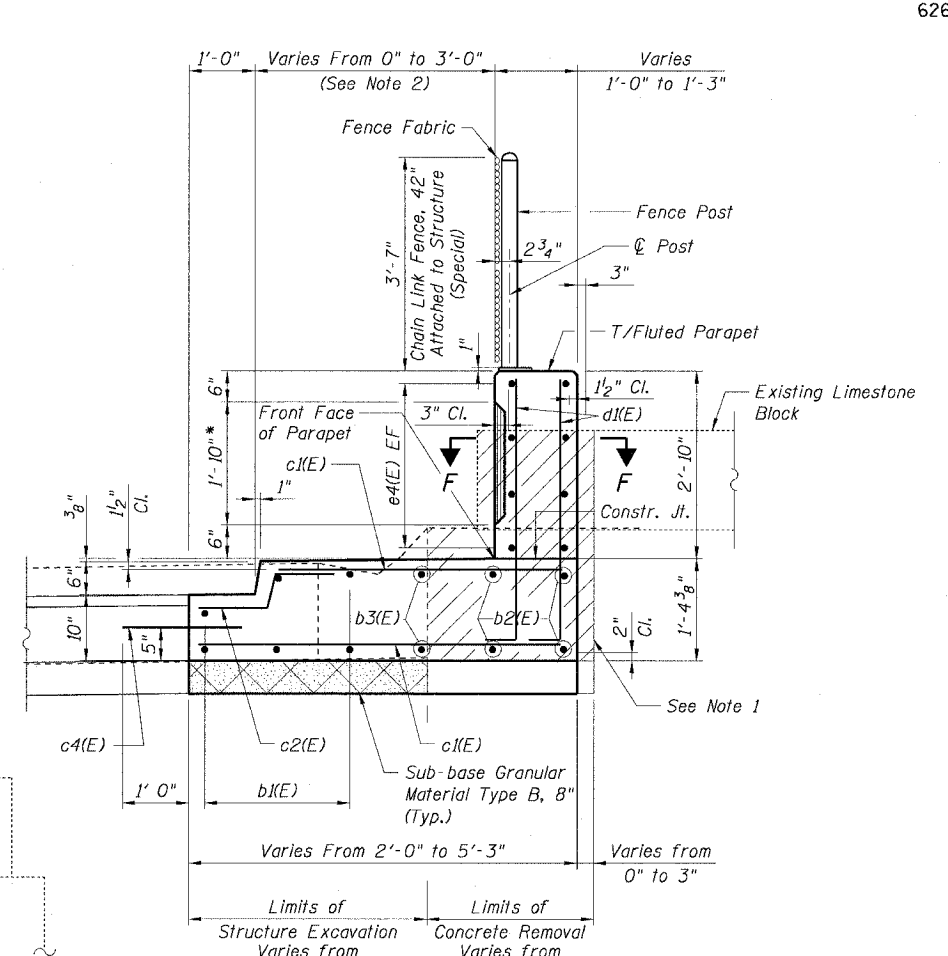
62693



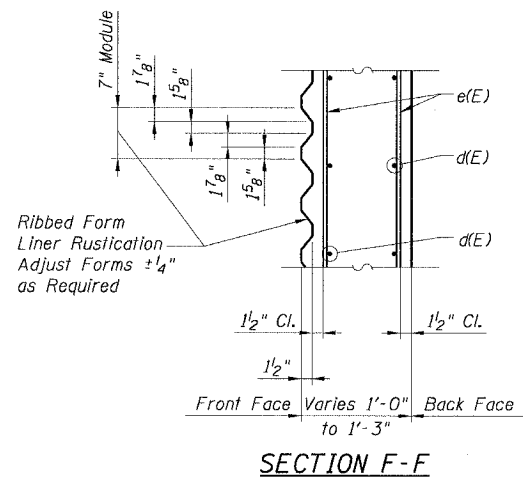
**SECTION A-A**  
Sta. 107+29.39 to Sta. 108+02.16



**SECTION B-B**  
Sta. 108+02.16



**SECTION C-C**  
Sta. 108+02.16 to Sta. 108+14.96



**SECTION F-F**

**LEGEND:**

- Earth
- Sub-Base Granular Material
- Structure Excavation
- Existing Structure
- Concrete Removal

**NOTES:**

1. Portion of existing Concrete Footing to be removed in accordance with Section 502 of Standard Specifications as necessary to construct new Fluted Parapet. Removal shall be included in the cost of Concrete Removal. Do not remove remaining portions of existing Column Footing to place Sub-base Granular Material.
2. Provide California Finish to top of Slab. See Sheet 119 in Roadway Details.
3. For elevations at Edge of Pavement see Roadway Plan.
4. For location of Sections A-A, B-B and C-C, see Sheet WRRR1.



REVISIONS	
NAME	DATE

Sheet WRRR2 of 4  
ILLINOIS DEPARTMENT OF TRANSPORTATION  
F.A.I. 90/94 (DAN RYAN EXPRESSWAY)  
SECTIONS  
SOUTH WENTWORTH AVENUE RETAINING WALLS  
CONRAIL BRIDGE  
SECTION (2021-922PT.1-AC)  
STATION 107+29.39 TO 108+14.96  
COOK COUNTY S.N. 016-WRRR  
SCALE: None DRAWN BY: RSB/CHD  
DATE: October 29, 2004 CHECKED BY: MM

11/23/2004 08:36:20 AM I:\P-40465\Struct\4-CRIF\9C\SW WRRR\RT 090022A-WRRR-211