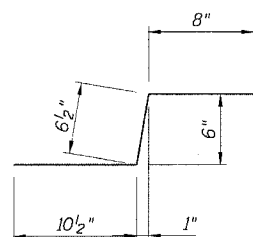


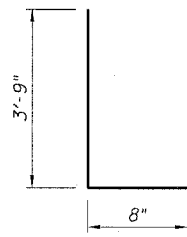
STATE OF ILLINOIS
DEPARTMENT OF TRANSPORTATION

F.A.I. RTE.	SECTION	COUNTY	TOTAL SHEETS	SHEET NO.
90/94	2021-922PT.1-AC	COOK	460	213
STA.	TO STA.			
FED. ROAD DIST. NO. 1	ILLINOIS	FED. AID PROJECT		

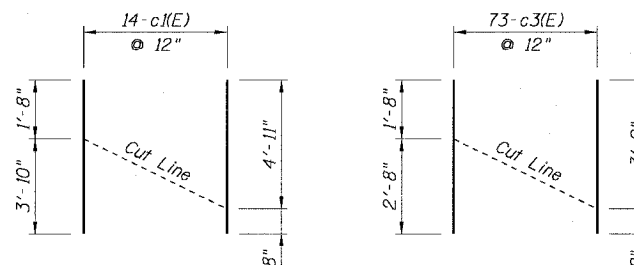
62693



BAR c2(E)



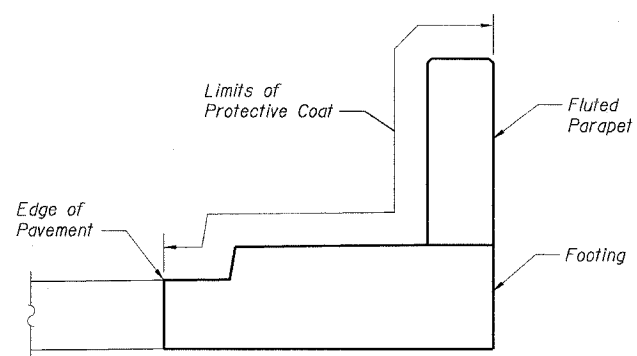
BAR d(E)



BAR c1(E)

BAR c3(E)

CUTTING DIAGRAM



PROTECTIVE COAT

BILL OF MATERIAL

Bar	No.	Size	Length	Shape	
b1(E)	6	#5	12'-10"	—	
b2(E)	4	#5	13'-1"	—	
b3(E)	2	#5	7'-0"	—	
b4(E)	10	#5	24'-8"	—	
b5(E)	10	#5	29'-8"	—	
b6(E)	12	#5	22'-6"	—	
c1(E)	13	#5	5'-6"	—	
c2(E)	86	#5	2'-1"	—	
c3(E)	73	#5	4'-4"	—	
c4(E)	86	#6	2'-0"	—	
d(E)	172	#5	4'-5"	L	
e1(E)	8	#4	22'-6"	—	
e2(E)	8	#4	26'-10"	—	
e3(E)	8	#4	24'-8"	—	
e4(E)	8	#4	13'-1"	—	
Item				Unit	Quantity
Reinforcement Bars, Epoxy Coated				Pound	3,110

Sheet WRR4 of 4

REVISIONS	
NAME	DATE

ILLINOIS DEPARTMENT OF TRANSPORTATION
F.A.I. 90/94 (DAN RYAN EXPRESSWAY)
REINFORCEMENT DETAILS
SOUTH WENTWORTH AVENUE RETAINING WALLS
CONRAIL BRIDGE
SECTION (2021-922PT.1-AC)
STATION 107+29.39 TO 108+14.96
COOK COUNTY S.N. 016-WRRR
SCALE: None DRAWN BY: RSB/CHD
DATE: October 29, 2004 CHECKED BY: MM

CTE ENGINEERS
CONSOER TOWNSEND ENVIRONMENTAL ENGINEERS, INC.
303 EAST WACKER DRIVE, SUITE 600
CHICAGO, ILLINOIS 60601-5212, PHONE: (312) 939-0300

11/23/2004 05:35:05 AM