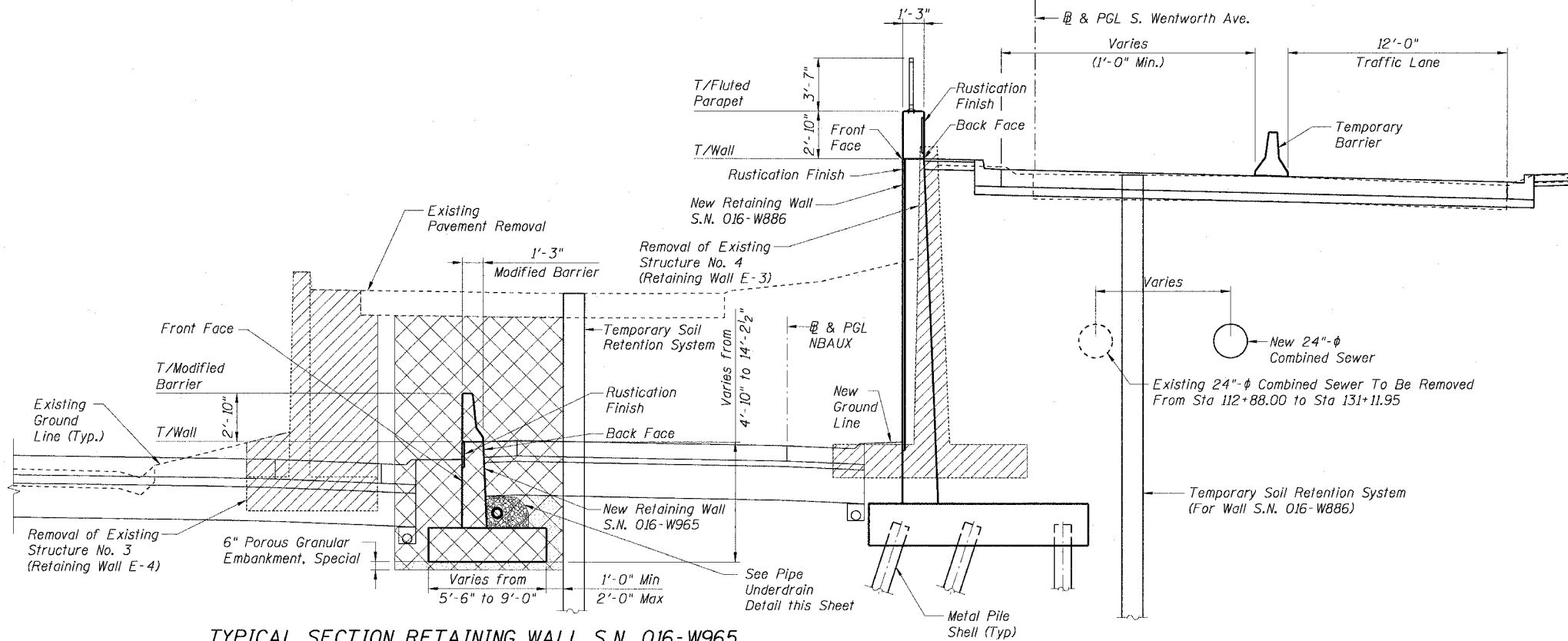
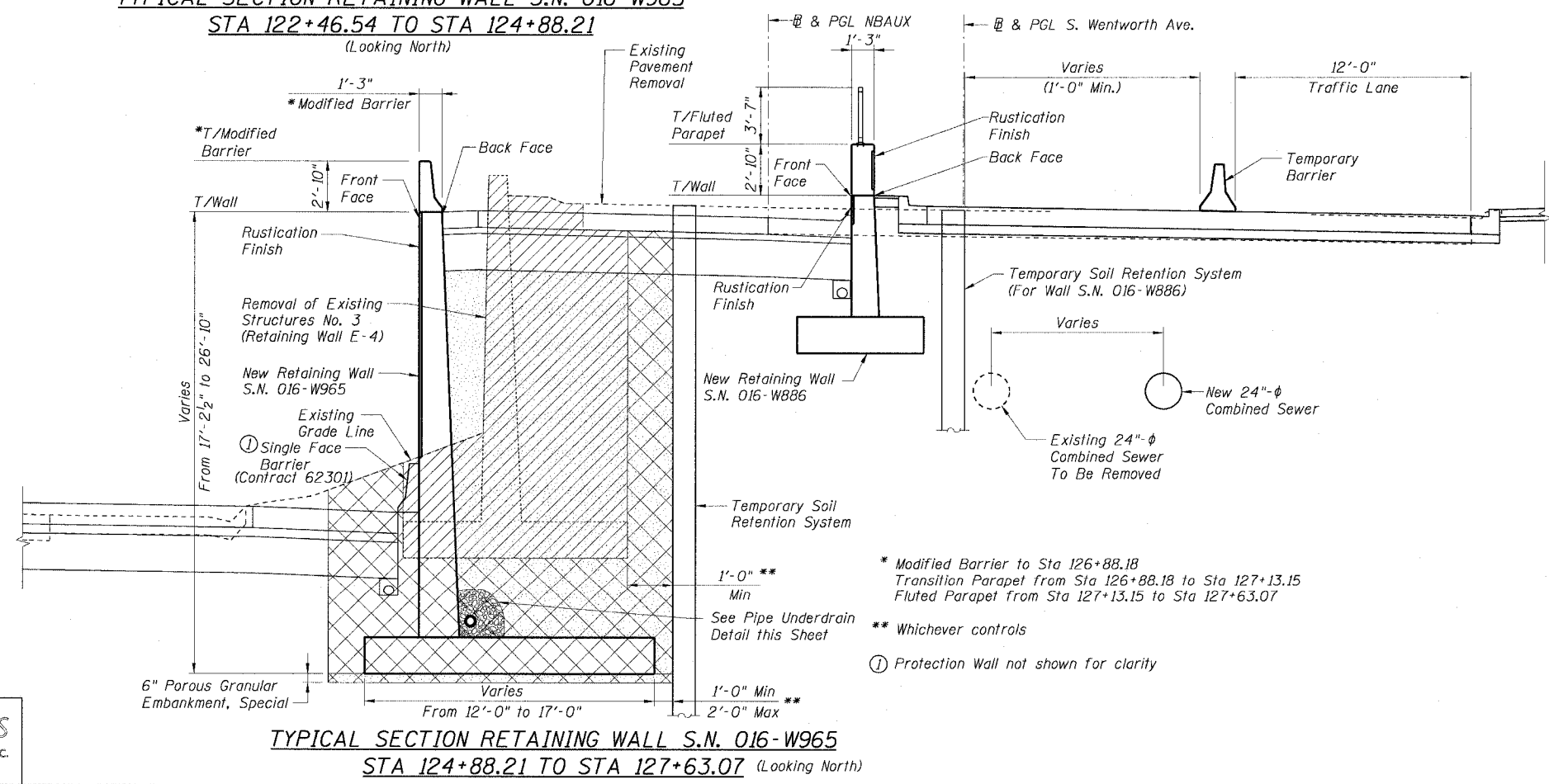


STATE OF ILLINOIS
DEPARTMENT OF TRANSPORTATION

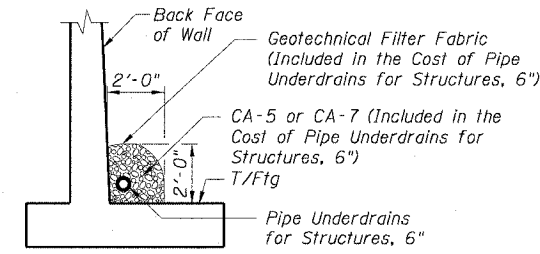
F.A.I. RTE.	SECTION	COUNTY	TOTAL SHEETS	SHEET NO.
90/94	2021-922PT.1-AC	COOK	460	259
STA.	TO STA.			
FED. ROAD DIST. NO. 1	ILLINOIS	FED. AID PROJECT	62693	



TYPICAL SECTION RETAINING WALL S.N. 016-W965
STA 122+46.54 TO STA 124+88.21
(Looking North)



TYPICAL SECTION RETAINING WALL S.N. 016-W965
STA 124+88.21 TO STA 127+63.07 (Looking North)



TYP. UNDERDRAIN DETAIL BEHIND RETAINING WALL

NOTES:

1. For Fluted Parapet Details see Sheet Z15.
2. For Modified Barrier Details see Sheet Z15.
3. For limits of Temporary Soil Retention System see Sheet Z13.
4. For Chain Link Fence, 42" Attached to Structure (Special) Details see Sheet SD1.
5. Work Sheets Z4 and Z5 together.

LEGEND

- Structure Excavation
- Porous Granular Embankment
- Removal of Existing Structures

* Modified Barrier to Sta 126+88.18
Transition Parapet from Sta 126+88.18 to Sta 127+13.15
Fluted Parapet from Sta 127+13.15 to Sta 127+63.07

** Whichever controls

① Protection Wall not shown for clarity

REVISIONS	
NAME	DATE

Sheet Z4 of Z1

ILLINOIS DEPARTMENT OF TRANSPORTATION
F.A.I. 90/94 (DAN RYAN EXPRESSWAY)
TYPICAL SECTIONS
SOUTH WENTWORTH AVENUE RETAINING WALL
WEST 59TH STREET TO WEST 63RD STREET
SECTION 2021-922 PT.1-AC
STATION 122+46.54 TO 130+53.87
COOK COUNTY SN. 016-W887-W965

SCALE: None DRAWN BY: ET/CHD
DATE: October 29, 2004 CHECKED BY: JSS/MM

11/23/2004 01:24:56 PM