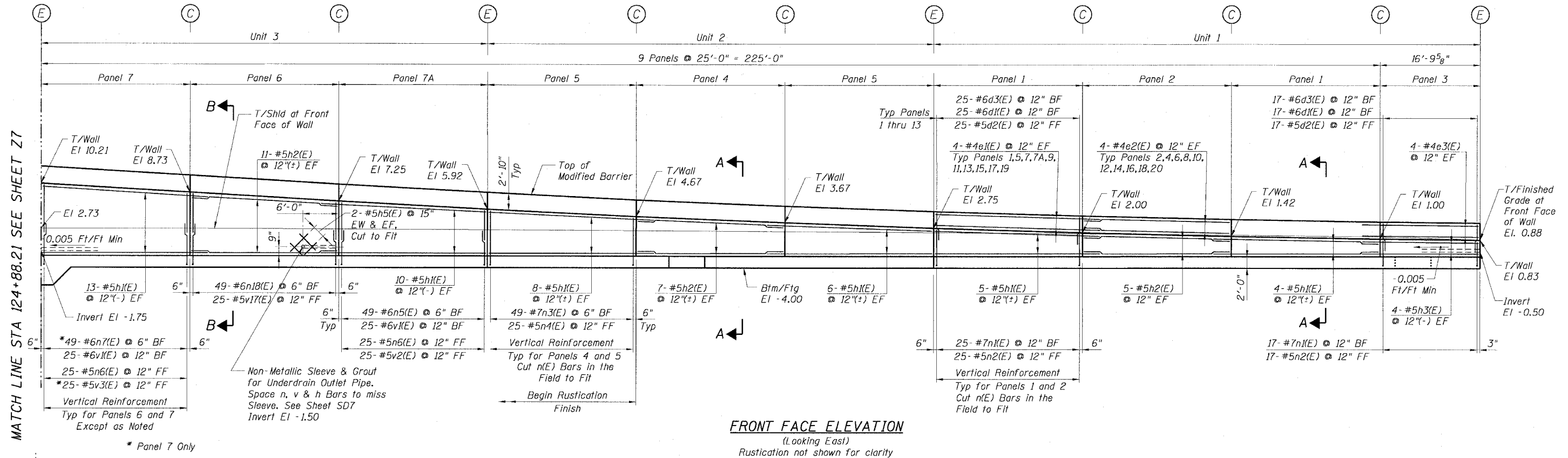


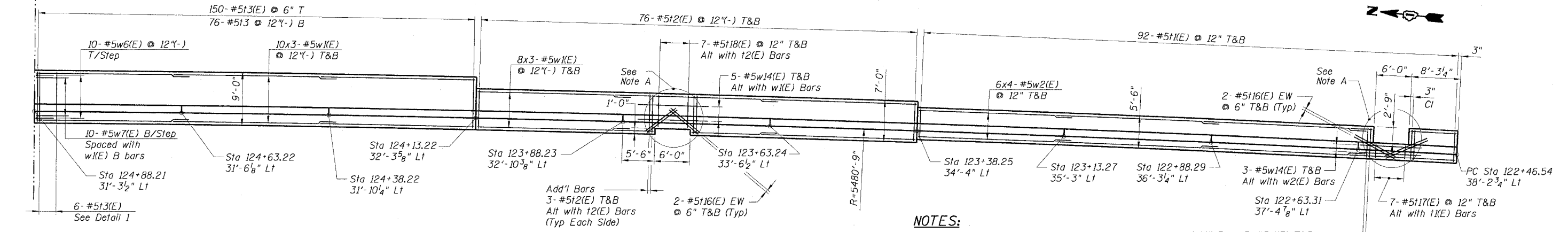
STATE OF ILLINOIS
DEPARTMENT OF TRANSPORTATION

F.A.I. R.T.E.	SECTION	COUNTY	TOTAL SHEETS	SHEET NO.
90/94	2021-922PT.1-AC	COOK	460	261
STA.	TO STA.			
FED. ROAD DIST. NO. 1	ILLINOIS	FED. AID PROJECT		

62693



FRONT FACE ELEVATION
(Looking East)
Rustication not shown for clarity



FOOTING PLAN

- NOTES:**
- For Wall Sections see Sheets Z10 to Z12.
 - For Step Details see Sheet Z11.
 - For Parapet Transition Details see Sheet Z14.
 - For Bar Bending Diagrams see Sheet Z16.
 - For Non-Metallic Sleeve and Grout detail see Sheet SD7.
 - Conduit and non-metallic sleeves shall be installed to miss Wall reinforcing bars. For Wall Penetration Details see Sheet SD7.
 - Minimum lap lengths for horizontal bars shall be as follows:
for #4e bars - 1'-8"
for #5h bars - 2'-2"
for #5w bars - 2'-5"
 - Bars indicated thus 18x6-#5 etc. indicates 18 lines of bars with 6 lengths per.
 - Work Sheets Z6 thru Z12 together.

NOTE A:
Cut Transverse and Longitudinal Bars in the Field to Fit.

REVISIONS	
NAME	DATE

Sheet Z6 of Z1

ILLINOIS DEPARTMENT OF TRANSPORTATION
F.A.I. 90/94 (DAN RYAN EXPRESSWAY)
DETAILED PLAN AND ELEVATION
SOUTH WENTWORTH AVENUE RETAINING WALL
WEST 59TH STREET TO WEST 63RD STREET
SECTION 2021-922PT.1-AC
STATION 122+46.54 TO 130+53.87
COOK COUNTY S.N. 016-W887-W965

SCALE: None DRAWN BY: ET
DATE: October 29, 2004 CHECKED BY: JSS/MM



11/23/2004 01:26:18 PM