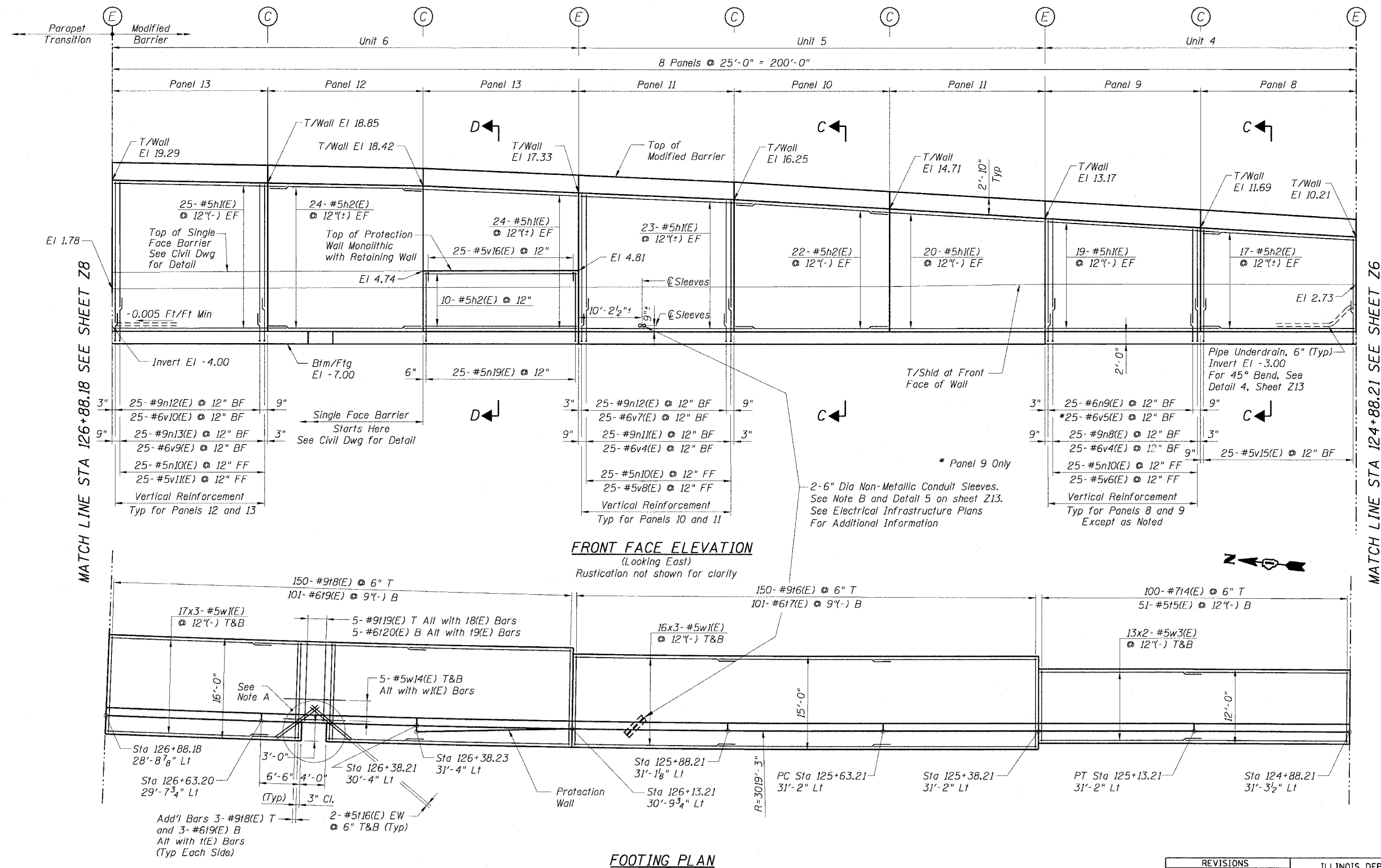


STATE OF ILLINOIS
DEPARTMENT OF TRANSPORTATION

F.A.I. RT#	SECTION	COUNTY	TOTAL SHEETS	SHEET NO.
90/94	2021-922PT.1-AC	COOK	460	262
STA.	TO STA.			
FED. ROAD DIST. NO. 1	ILLINOIS	FED. AID PROJECT		

62693



MATCH LINE STA 126+88.18 SEE SHEET Z8

MATCH LINE STA 124+88.21 SEE SHEET Z6

FRONT FACE ELEVATION
(Looking East)
Rustication not shown for clarity

FOOTING PLAN

NOTE A:
Cut Transverse and Longitudinal Bars in the Field to Fit.

NOTE B:
Conduits and conduit sleeves shall be installed to miss wall reinforcing bars. Contractor must place at least one pair of n(E) and v(E) bars in between adjacent sleeves. The cost of furnishing and installing sleeves and grout shall be included in the cost of "Concrete Structures".

- NOTES:**
- For d1(E), d2(E), d3(E), e1(E) & e2(E) bars see Sheet Z6.
 - For Sections C-C & D-D see Sheets Z10 & Z11.

REVISIONS	
NAME	DATE

Sheet 27 of 21

ILLINOIS DEPARTMENT OF TRANSPORTATION
F.A.I. 90/94 (DAN RYAN EXPRESSWAY)
DETAILED PLAN AND ELEVATION
SOUTH WENTWORTH AVENUE RETAINING WALL
WEST 59TH STREET TO WEST 63RD STREET
SECTION 2021-922PT.1-AC
STATION 122+46.54 TO 130+53.87
COOK COUNTY S.N. 016-W887-W965

SCALE: None
DATE: October 29, 2004
DRAWN BY: ET
CHECKED BY: JSS/MM



11/23/2004 01:26:53 PM