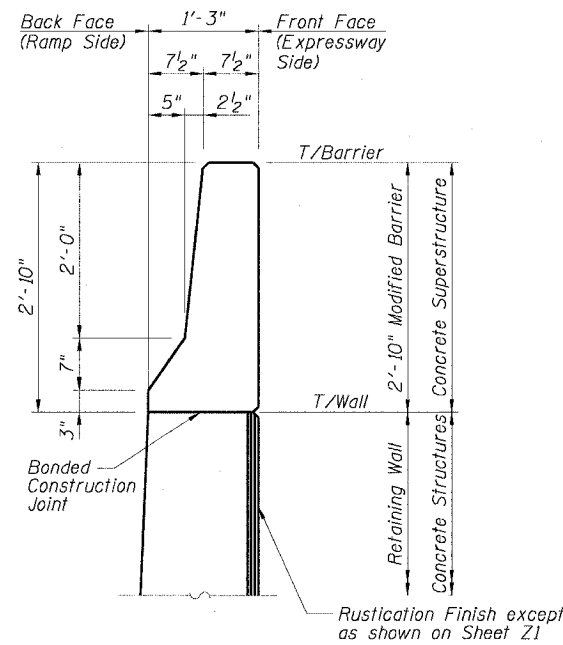
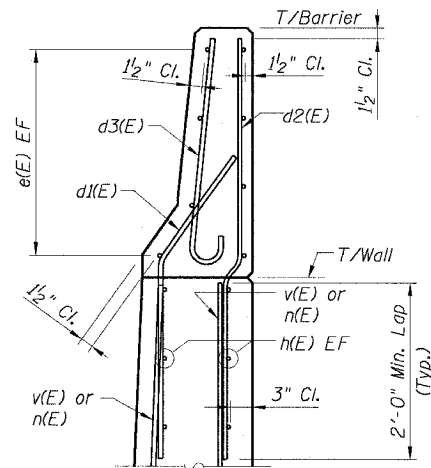


STATE OF ILLINOIS
DEPARTMENT OF TRANSPORTATION

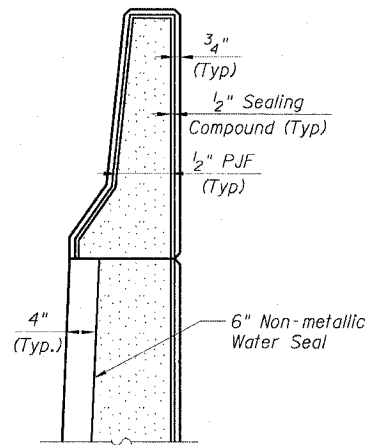
F.A.I. RTE.	SECTION	COUNTY	TOTAL SHEETS	SHEET NO.
90/94	2021-922PT.1-AC	COOK	460	270
STA.	TO STA.			
FED. ROAD DIST. NO. 1	ILLINOIS	FED. AID PROJECT		
62693				



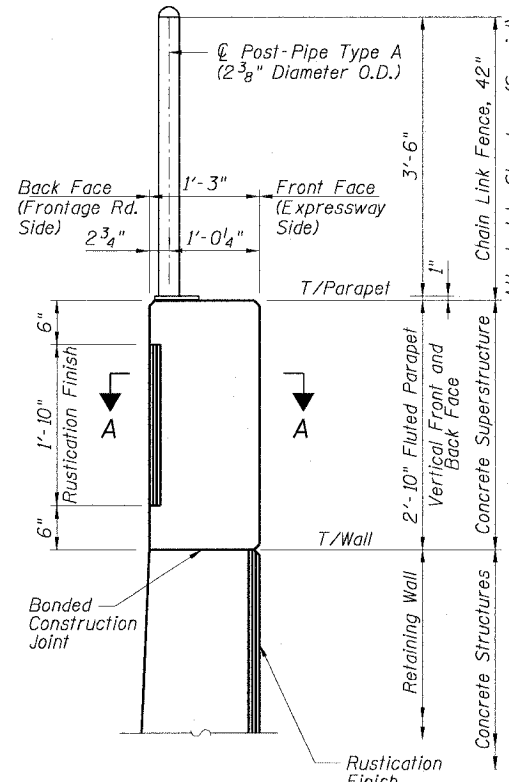
DIMENSIONS



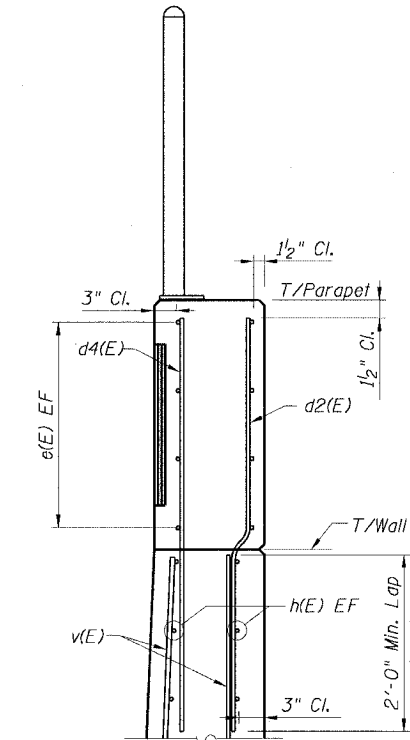
REINFORCING



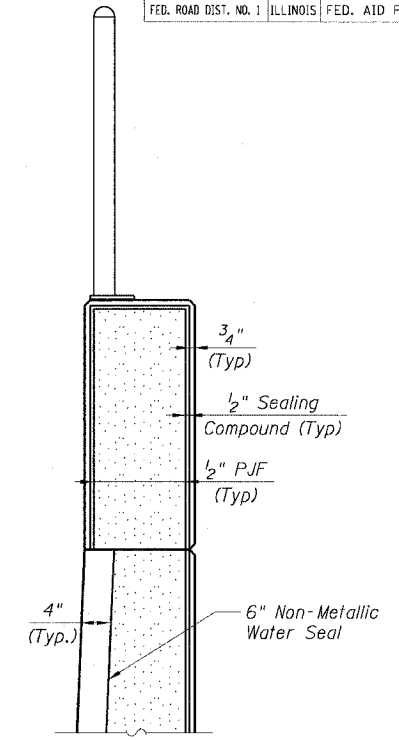
EXPANSION JOINT



DIMENSIONS



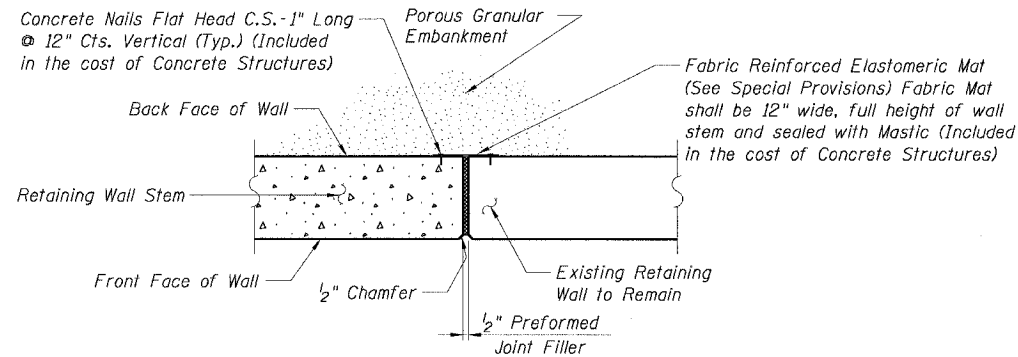
REINFORCING



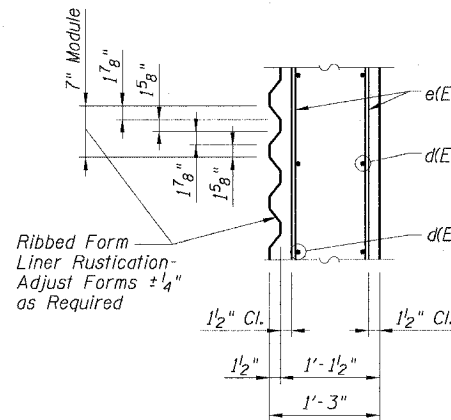
EXPANSION JOINT

TYPICAL SECTIONS - MODIFIED BARRIER

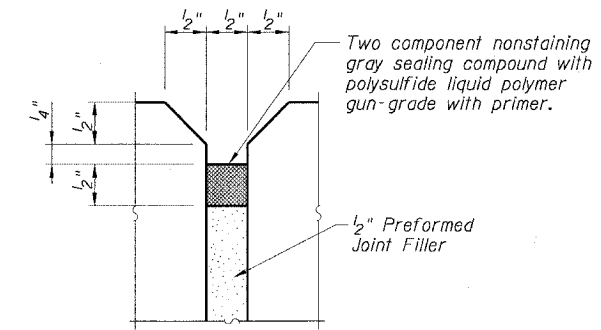
TYPICAL SECTIONS - FLUTED PARAPET



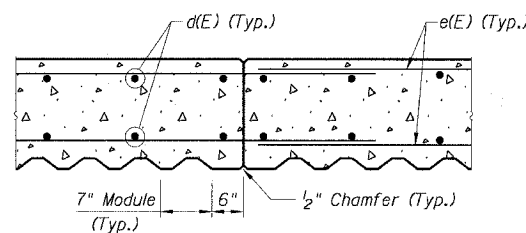
**EXPANSION JOINT DETAIL
NEW/EXISTING RETAINING WALL**



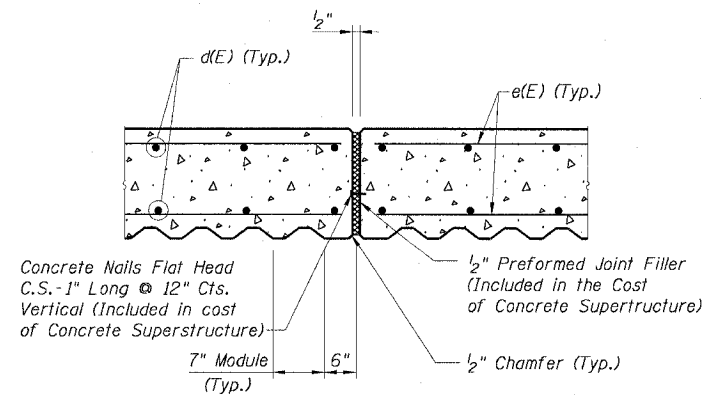
SECTION A-A



**EXPANSION JOINT
SEALING DETAIL**



**CONSTRUCTION JOINT DETAIL
FLUTED PARAPET**



**EXPANSION JOINT DETAIL
FLUTED PARAPET**

NOTES:

1. For Bar Bending Diagrams see Sheet Z16.
2. For Chain Link Fence, 42" Attached to Structure (Special) Detail see Sheet SD1.
3. For Location of Outlet Pipe(s) see Sheets Z6 to Z9. (Detailed Plan & Elevation sheets)
4. Expansion Joint Sealing Detail also applies to Retaining Wall.

REVISIONS	
NAME	DATE

Sheet Z15 of 21

ILLINOIS DEPARTMENT OF TRANSPORTATION
F.A.I. 90/94 (DAN RYAN EXPRESSWAY)
FLUTED PARAPET & MODIFIED BARRIER DETAILS
SOUTH WENTWORTH AVENUE RETAINING WALL
WEST 59TH STREET TO WEST 63RD STREET
SECTION 2021-922 PT. 1-AC
STATION 122+46.54 TO 130+53.87
COOK COUNTY S.N. 016-W887-W965
SCALE: DRAWN BY: ET
DATE: October 29, 2004 CHECKED BY: JSS/MM

10/22/2004 02:36:48 PM