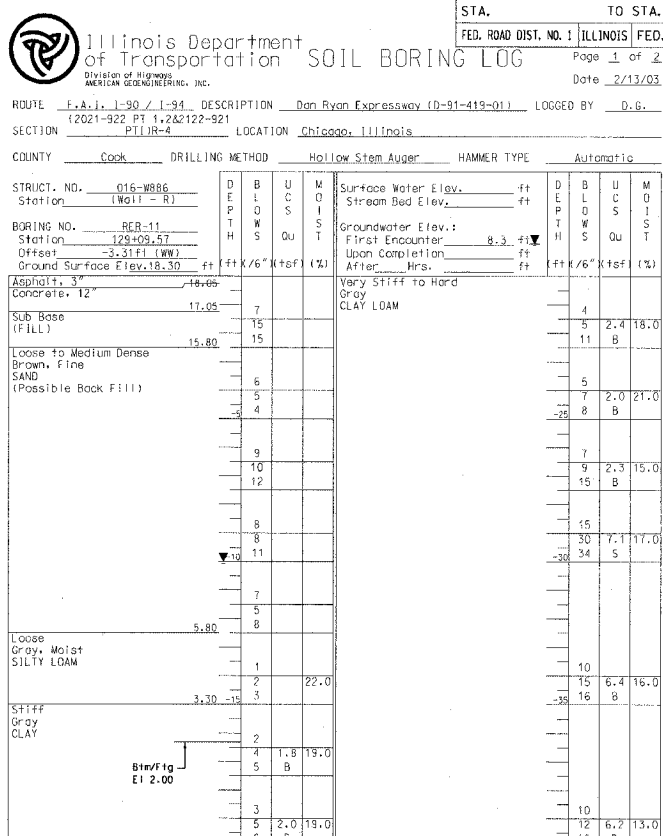
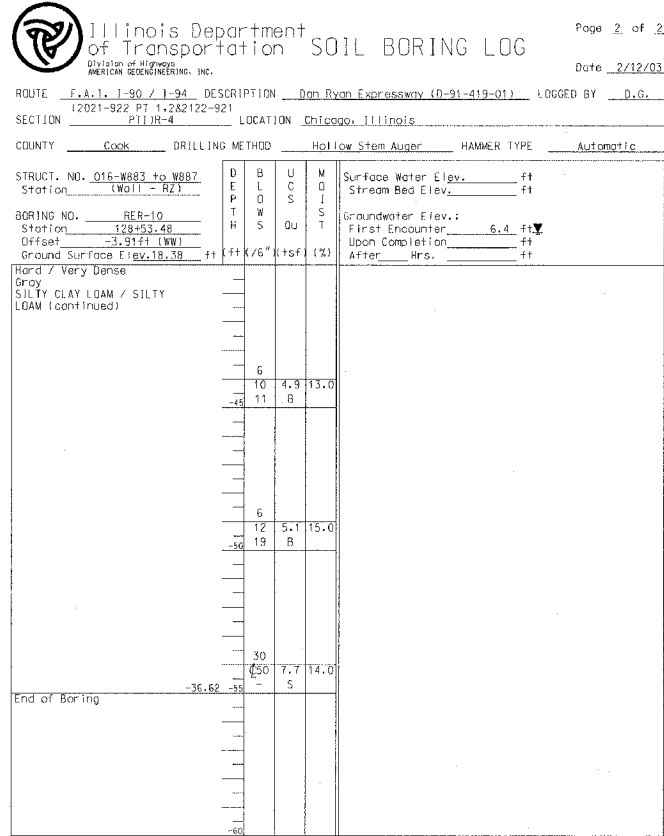
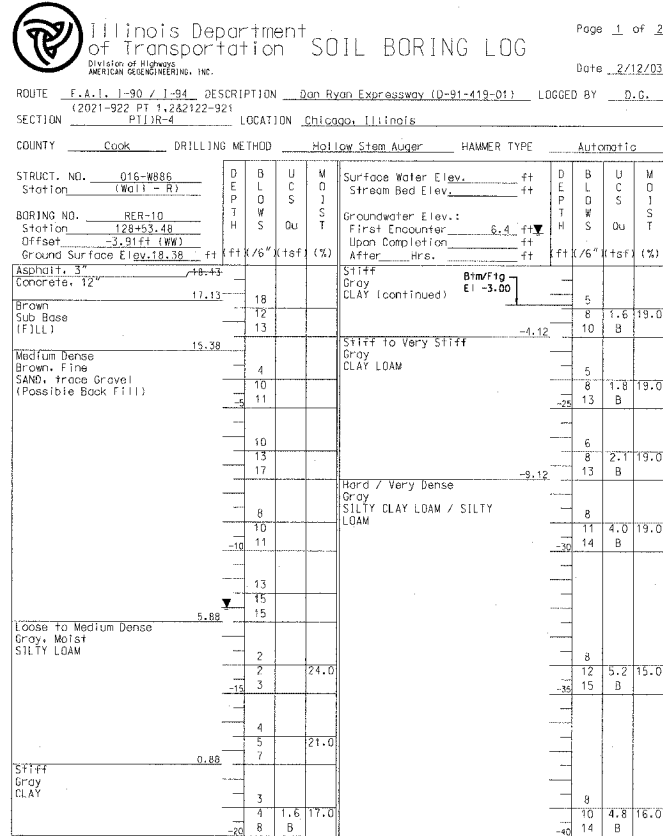
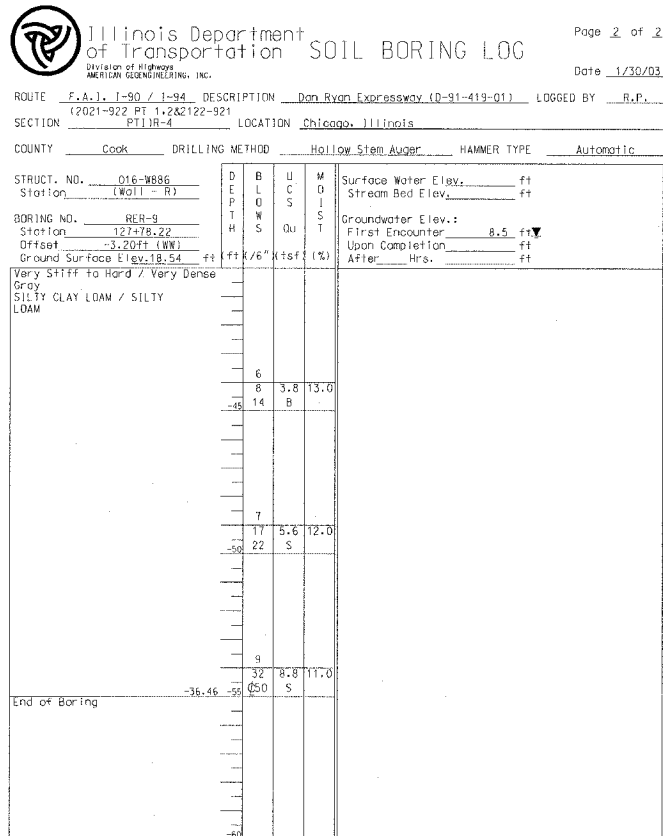


STATE OF ILLINOIS
DEPARTMENT OF TRANSPORTATION

F.A.I. RTE.	SECTION	COUNTY	TOTAL SHEETS	SHEET NO.
90/94	2021-922PT.1-AC	COOK	460	276
STA.	TO STA.			
FED. ROAD DIST. NO. 1 ILLINOIS		FED. AID PROJECT		
		Date 2/13/03		
		62693		

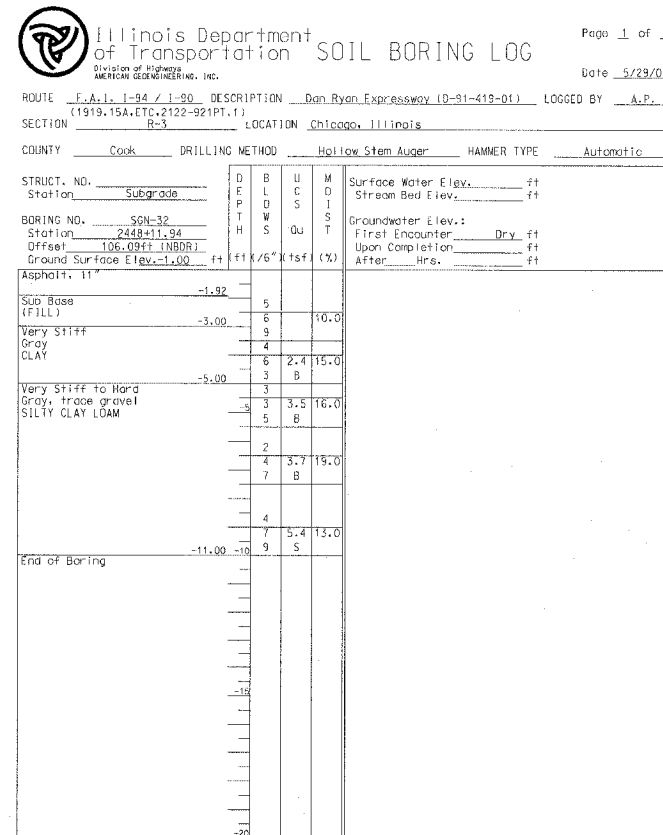
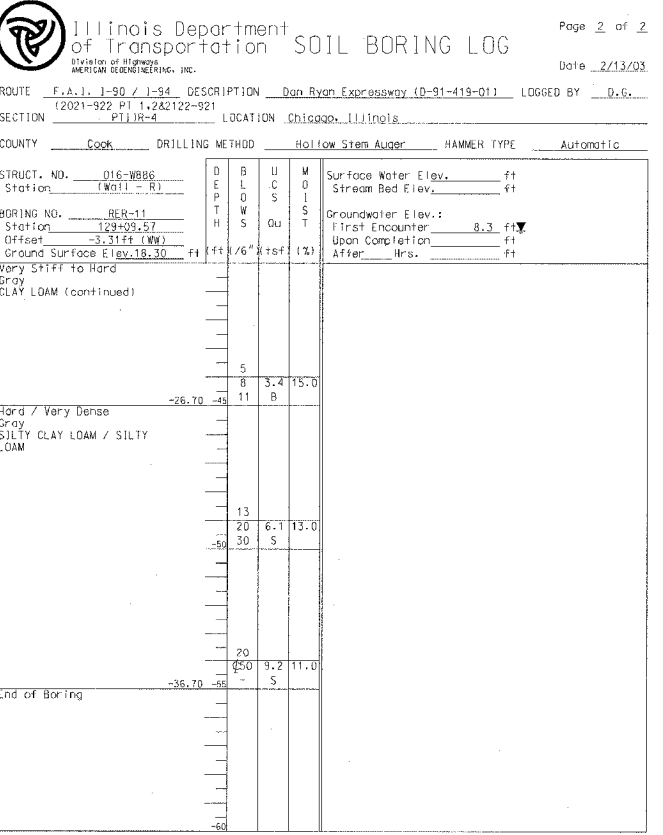


The Unconfined Compressive Strength (UCS) Failure Mode is indicated by (B-Bulge, S-Shear, P-Penetrometer). The SPT (N value) is the sum of the last two blow values in each sampling zone (ASTM D206) BBS, from 137 (Rev. 8-99)

The Unconfined Compressive Strength (UCS) Failure Mode is indicated by (B-Bulge, S-Shear, P-Penetrometer). The SPT (N value) is the sum of the last two blow values in each sampling zone (ASTM D206) BBS, from 137 (Rev. 8-99)

The Unconfined Compressive Strength (UCS) Failure Mode is indicated by (B-Bulge, S-Shear, P-Penetrometer). The SPT (N value) is the sum of the last two blow values in each sampling zone (ASTM D206) BBS, from 137 (Rev. 8-99)

The Unconfined Compressive Strength (UCS) Failure Mode is indicated by (B-Bulge, S-Shear, P-Penetrometer). The SPT (N value) is the sum of the last two blow values in each sampling zone (ASTM D206) BBS, from 137 (Rev. 8-99)



The Unconfined Compressive Strength (UCS) Failure Mode is indicated by (B-Bulge, S-Shear, P-Penetrometer). The SPT (N value) is the sum of the last two blow values in each sampling zone (ASTM D206) BBS, from 137 (Rev. 8-99)

The Unconfined Compressive Strength (UCS) Failure Mode is indicated by (B-Bulge, S-Shear, P-Penetrometer). The SPT (N value) is the sum of the last two blow values in each sampling zone (ASTM D206) BBS, from 137 (Rev. 8-99)

Sheet 221 of 21

CTE ENGINEERS
CONSOLIDATED TOWNSEND ENVIRONMENTAL ENGINEERS, INC.
303 EAST WACKER DRIVE, SUITE 600
CHICAGO, ILLINOIS 60601-5202, PHONE: (312) 938-0300

REVISIONS	NAME	DATE

ILLINOIS DEPARTMENT OF TRANSPORTATION
F.A.I. 90/94 (DAN RYAN EXPRESSWAY)
SOIL BORING LOGS
SOUTH WENTWORTH AVENUE RETAINING WALL
WEST 59TH STREET TO WEST 63RD STREET
SECTION 2021-922 PT.1-AC
STATION 122+46.54 TO 130+53.87
COOK COUNTY S.N. 016-W887-W965
SCALE: None DRAWN BY: SR
DATE: October 29, 2004 CHECKED BY: JSS/MM

11/23/2004 01:52:14 PM