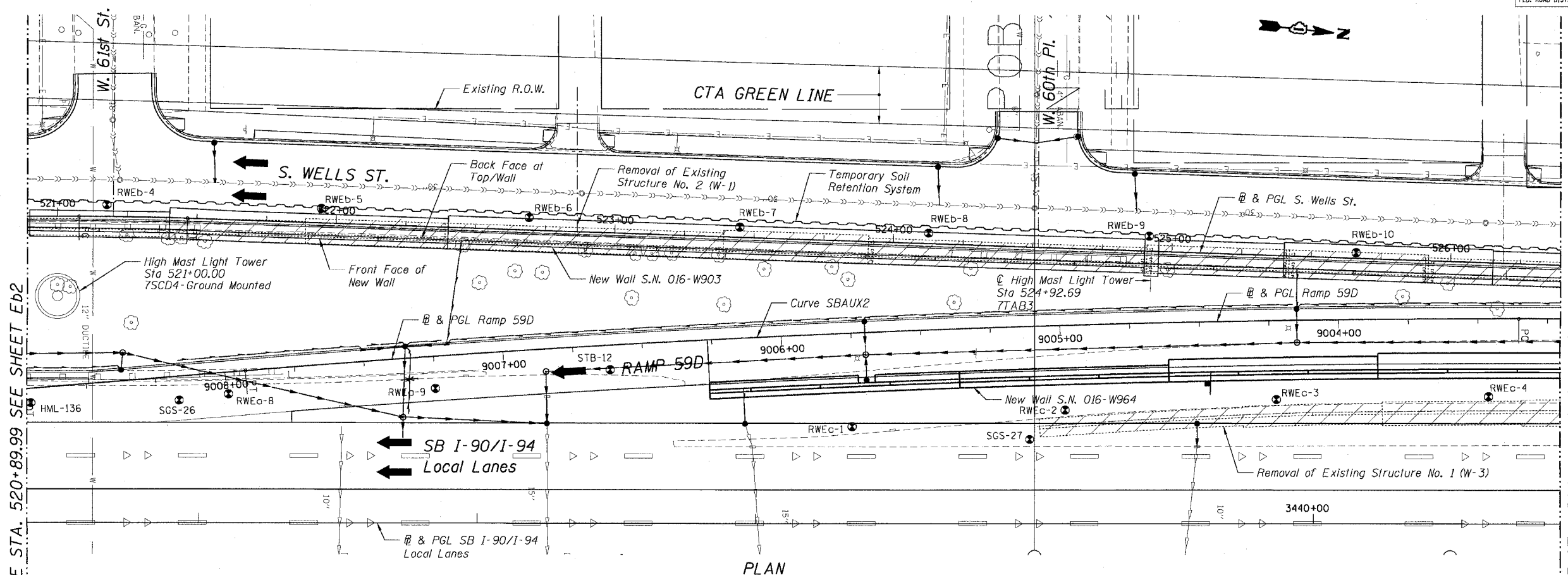


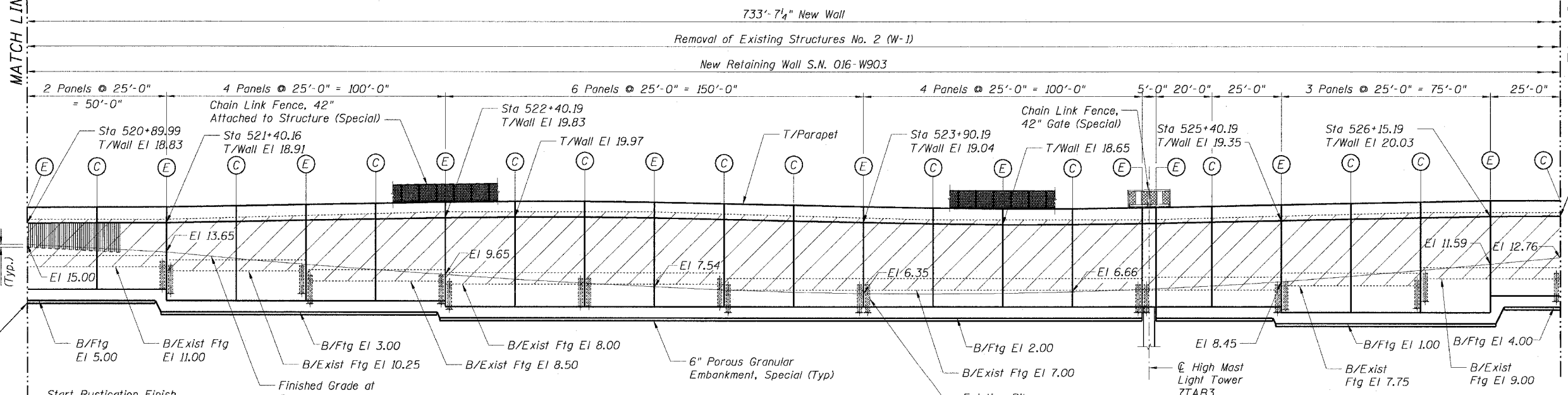
STATE OF ILLINOIS
DEPARTMENT OF TRANSPORTATION

F.A.I. RATE:	SECTION	COUNTY	TOTAL SHEETS	SHEET NO.
90/94	2021-922PT.1-AC	COOK	460	291
STA.	TO STA.			
FED. ROAD DIST. NO. 1	ILLINOIS	FED. AID PROJECT		

62693

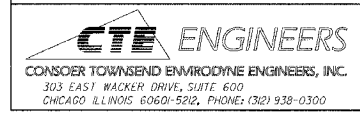


PLAN



FRONT FACE ELEVATION
(Looking West)

Note A:
Contractor must protect the Existing Retaining Wall to Remain, just to the south of the proposed wall. Limit excavation under the existing pile supported wall to a minimum. Backfill and properly compact excavated area underneath the existing footing. Contractor to prepare and submit means and method of supporting existing wall for Engineer's review and approval.
Maintain Existing pipe underdrain behind "Existing Wall to Remain".



REVISIONS	NAME	DATE

Sheet Eb3 of 23
ILLINOIS DEPARTMENT OF TRANSPORTATION
F.A.I. 90/94 (DAN RYAN EXPRESSWAY)
GENERAL PLAN III
SOUTH WELLS STREET RETAINING WALL
WEST 62ND STREET TO WEST 59TH STREET
SECTION 2021-922PT.1-AC
STATION 513+16.20 TO 528+23.69
COOK COUNTY SN. 016-W906-W903
SCALE: None
DATE: October 29, 2004
DRAWN BY: ET/CHD
CHECKED BY: CG/MM

MATCH LINE STA. 520+89.99 SEE SHEET Eb2

MATCH LINE STA. 526+40.19 SEE SHEET Eb4

10/27/2004 11:24:59 AM