

STATE OF ILLINOIS  
DEPARTMENT OF TRANSPORTATION

F.A.I. RTE.	SECTION	COUNTY	TOTAL SHEETS	SHEET NO.
90/94	2021-922PT.1-AC	COOK	460	293
STA.	TO STA.			
FED. ROAD DIST. NO. 1	ILLINOIS	FED. AID PROJECT		

62693

**CURVE BL-WELL-1**

P.I. STA= 521+27.16  
N= 1,864,522.25  
E= 1,175,556.14  
Δ= 1° 54' 54"  
D= 4° 55' 05"  
R= 1165.00'  
T= 19.47'  
L= 38.94'  
E= 0.16'  
e= N/A  
T.R.= N/A  
S.E. RUN= N/A  
P.C. STA= 521+07.69  
N= 1,864,502.79  
E= 1,175,556.68  
P.T. STA= 521+46.63  
N= 1,864,541.72  
E= 1,175,556.25

**CURVE BL-WELL-2**

P.I. STA= 528+60.56  
N= 1,865,255.64  
E= 1,175,560.31  
Δ= 1° 57' 29"  
D= 1° 00' 09"  
R= 5715.00'  
T= 97.67'  
L= 195.31'  
E= 0.83'  
e= N/A  
T.R.= N/A  
S.E. RUN= N/A  
P.C. STA= 527+62.89  
N= 1,865,157.98  
E= 1,175,559.75  
P.T. STA= 529+58.21  
N= 1,865,353.27  
E= 1,175,557.53

**CURVE SBAUX1**

P.I. STA= 9001+46.37  
N= 1,865,209.16  
E= 1,175,573.36  
Δ= 4° 39' 23"  
D= 1° 35' 30"  
R= 3600.00'  
T= 146.37'  
L= 292.57'  
E= 2.97'  
e= N/A  
T.R.= N/A  
S.E. RUN= N/A  
P.C. STA= 9000+00.00  
N= 1,865,354.66  
E= 1,175,557.49  
P.T. STA= 9002+92.84  
N= 1,865,062.84  
E= 1,175,577.36

**CURVE SBAUX2**

P.I. STA= 9005+64.11  
N= 1,864,791.41  
E= 1,175,584.78  
Δ= 4° 45' 49"  
D= 1° 02' 30"  
R= 5500.00'  
T= 228.77'  
L= 457.27'  
E= 4.76'  
e= N/A  
T.R.= N/A  
S.E. RUN= N/A  
P.C. STA= 9003+35.35  
N= 1,865,020.09  
E= 1,175,578.53  
P.T. STA= 9007+92.62  
N= 1,864,564.03  
E= 1,175,610.01

**CURVE SBAUX3**

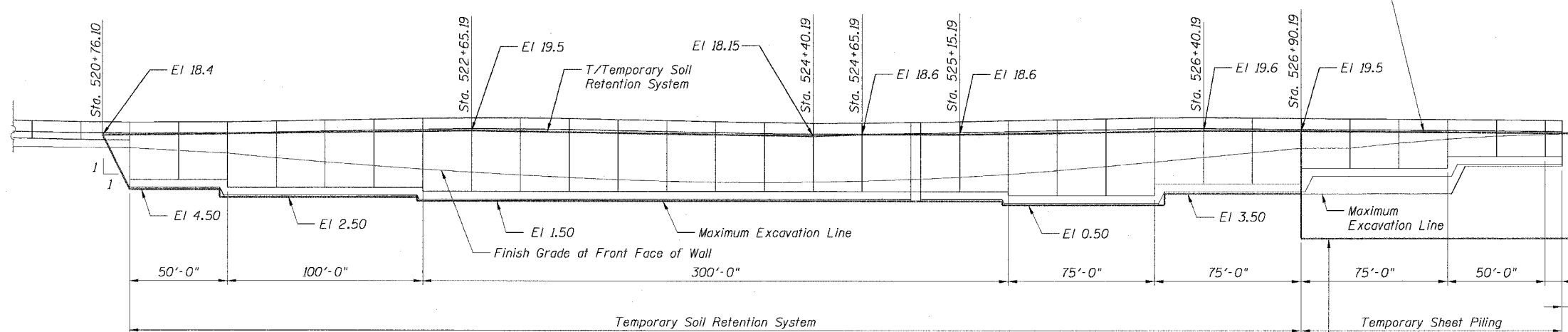
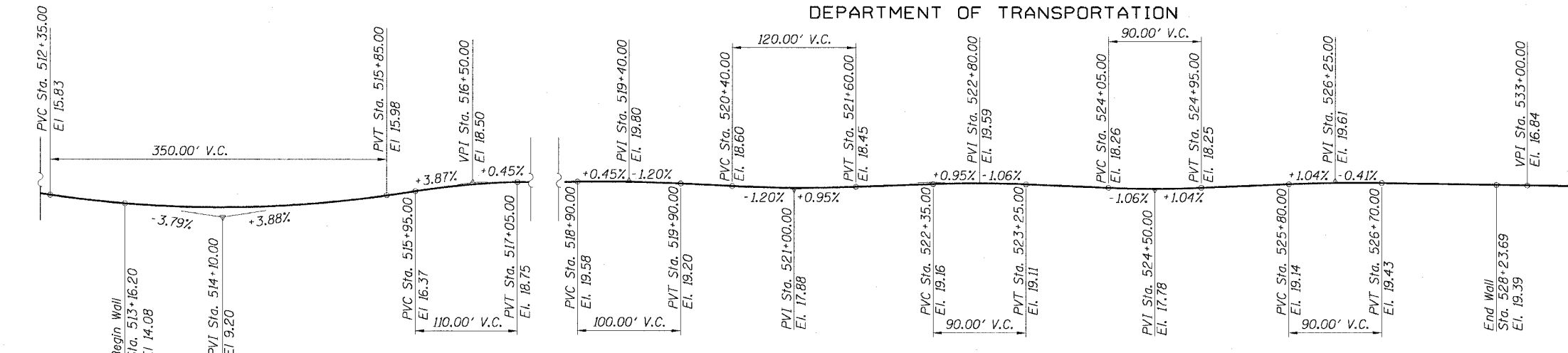
P.I. STA= 9013+94.96  
N= 1,863,962.56  
E= 1,175,608.62  
Δ= 1° 57' 20"  
D= 1° 02' 30"  
R= 5500.00'  
T= 93.88'  
L= 187.72'  
E= 0.80'  
e= N/A  
T.R.= N/A  
S.E. RUN= N/A  
P.C. STA= 9013+01.08  
N= 1,864,056.35  
E= 1,175,612.60  
P.T. STA= 9014+88.82  
N= 1,863,868.69  
E= 1,175,607.83

**CURVE SBAUX4**

P.I. STA= 9017+58.36  
N= 1,863,599.16  
E= 1,175,605.59  
Δ= 3° 38' 40"  
D= 1° 35' 30"  
R= 3600.00'  
T= 114.53'  
L= 228.99'  
E= 1.82'  
e= N/A  
T.R.= N/A  
S.E. RUN= N/A  
P.C. STA= 9016+43.83  
N= 1,863,713.69  
E= 1,175,606.54  
P.T. STA= 9018+72.82  
N= 1,863,484.92  
E= 1,175,597.35

**PROFILE GRADE - SOUTH WELLS STREET**

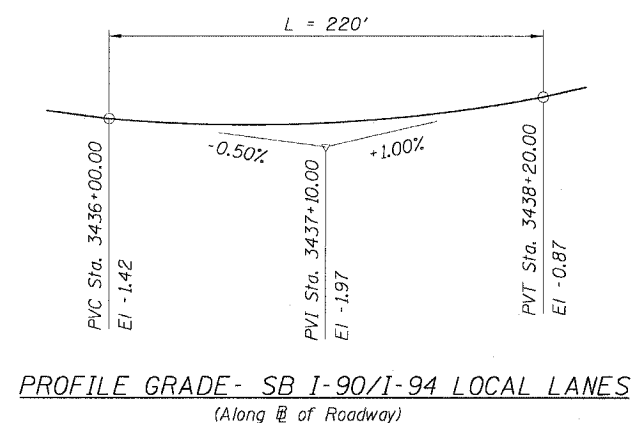
(Along @ of Roadway)



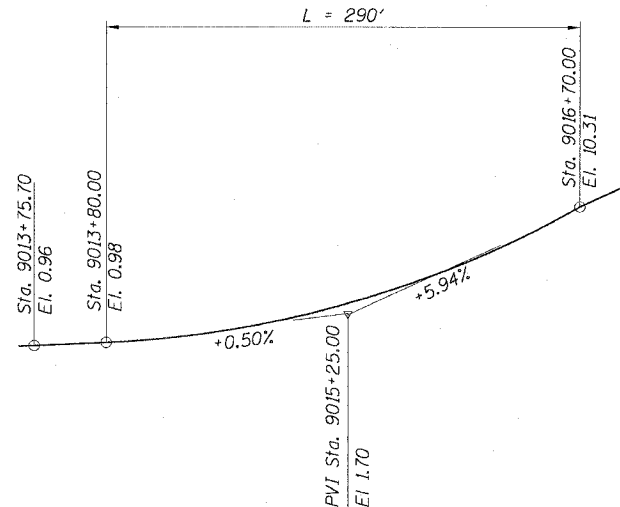
**NOTE:**  
A cantilevered sheet piling design does not appear feasible for Units 3 thru 7 and additional members or other retention systems may be necessary. The Contractor shall submit a temporary soil retention system/temporary sheet piling design including plan details and calculations for review and acceptance by the Engineer.

**ELEVATION  
TEMPORARY SOIL RETENTION SYSTEM/  
TEMPORARY SHEET PILING**  
(Looking West)

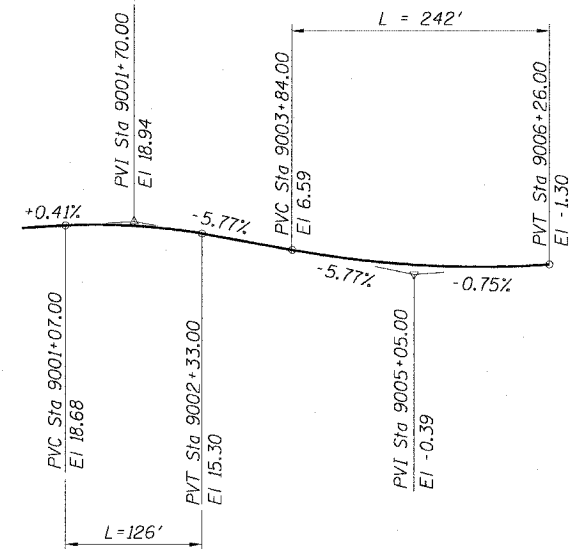
The Contractor shall submit a Cantilevered Sheet Piling design including plan details and calculations for review and acceptance by the Engineer. (Typ.)



**PROFILE GRADE - SB I-90/I-94 LOCAL LANES**  
(Along @ of Roadway)



**PROFILE GRADE - RAMP 63A**  
(Along @ of Roadway)



**PROFILE GRADE - RAMP 59D**  
(Along @ of Roadway)

REVISIONS	
NAME	DATE

ILLINOIS DEPARTMENT OF TRANSPORTATION  
F.A.I. 90/94 (DAN RYAN EXPRESSWAY)  
**PROFILE GRADES**  
SOUTH WELLS STREET RETAINING WALL  
WEST 62ND STREET TO WEST 59TH STREET  
SECTION 2021-922PT.1-AC  
STATION 513+16.20 TO 528+23.69  
COOK COUNTY SN. 016-W906-W903  
SCALE: None DRAWN BY: ET/CHD  
DATE: October 29, 2004 CHECKED BY: CG/AJS



11/23/2004 09:37:56 AM