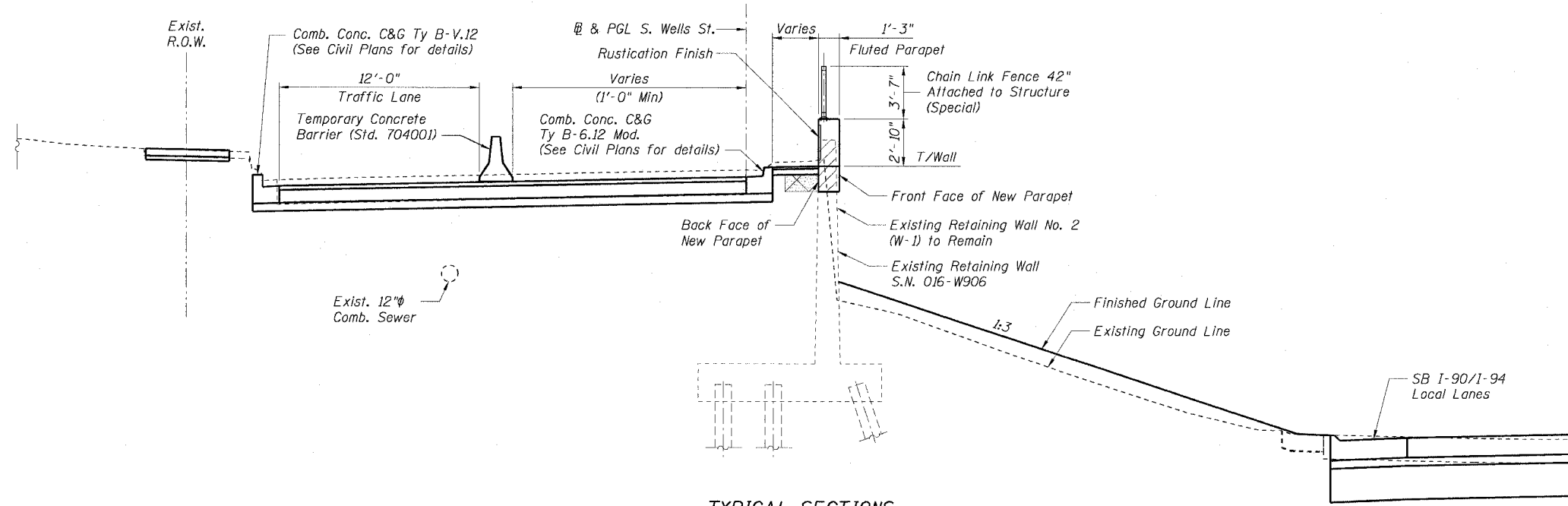


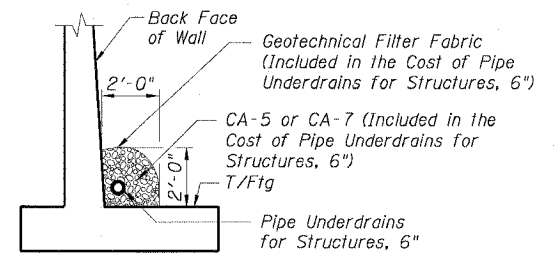
STATE OF ILLINOIS
DEPARTMENT OF TRANSPORTATION

F.A.I. RTE.	SECTION	COUNTY	TOTAL SHEETS	SHEET NO.
90/94	2021-922PT.1-AC	COOK	460	294
STA.	TO STA.			
FED. ROAD DIST. NO. 1	ILLINOIS	FED. AID PROJECT		

62693

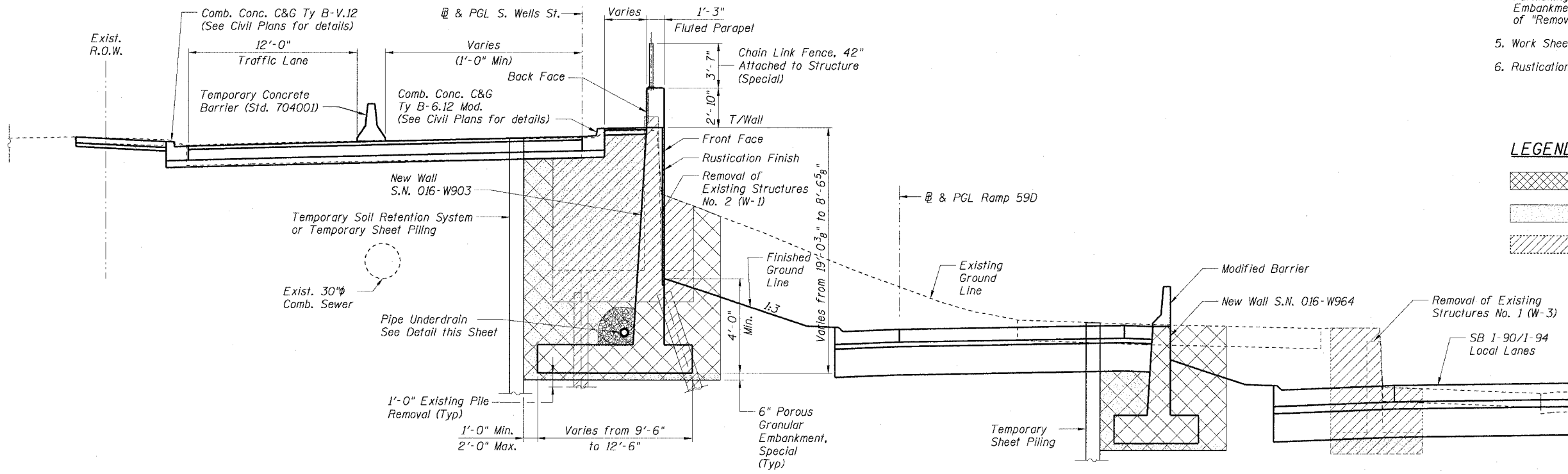


TYPICAL SECTIONS
STA. 513+16.20 to 513+66.35
STA. 514+39.98 to 520+89.99



**TYP. UNDERDRAIN DETAIL
BEHIND RETAINING WALL**

- NOTES:**
1. For Fluted Parapet Details see Sheet Eb17.
 2. For limits of Temporary Soil Retention System/ Temporary Sheet Piling see Sheet Eb5.
 3. For Chain Link Fence, 42" Attached to Structure (Special) Details see Sheet SD1.
 4. Remove existing piles to 1'-0" below the bottom of new Footing and backfill resulting holes with compacted "Porous Granular Embankment, Special" Furnishing, Placing and Compacting Pourour Granular Embankment, Special shall be included in the cost of "Removal of Existing Structures No. 2".
 5. Work Sheets Eb6 and Eb7 together.
 6. Rustication Finish to be 6" below Final Grade.



TYPICAL SECTIONS
STA. 520+89.99 to 527+99.28

LEGEND

	Structure Excavation
	Porous Granular Embankment
	Removal of Existing Structures

REVISIONS

NAME	DATE

ILLINOIS DEPARTMENT OF TRANSPORTATION
F.A.I. 90/94 (DAN RYAN EXPRESSWAY)
TYPICAL SECTIONS
SOUTH WELLS STREET RETAINING WALL
WEST 62ND STREET TO WEST 59TH STREET
SECTION 2021-922PT.1-AC
STATION 513+16.20 TO 528+23.69
COOK COUNTY SN. 016-W906-W903
SCALE: None DRAWN BY: CHD
DATE: October 29, 2004 CHECKED BY: CG/MM