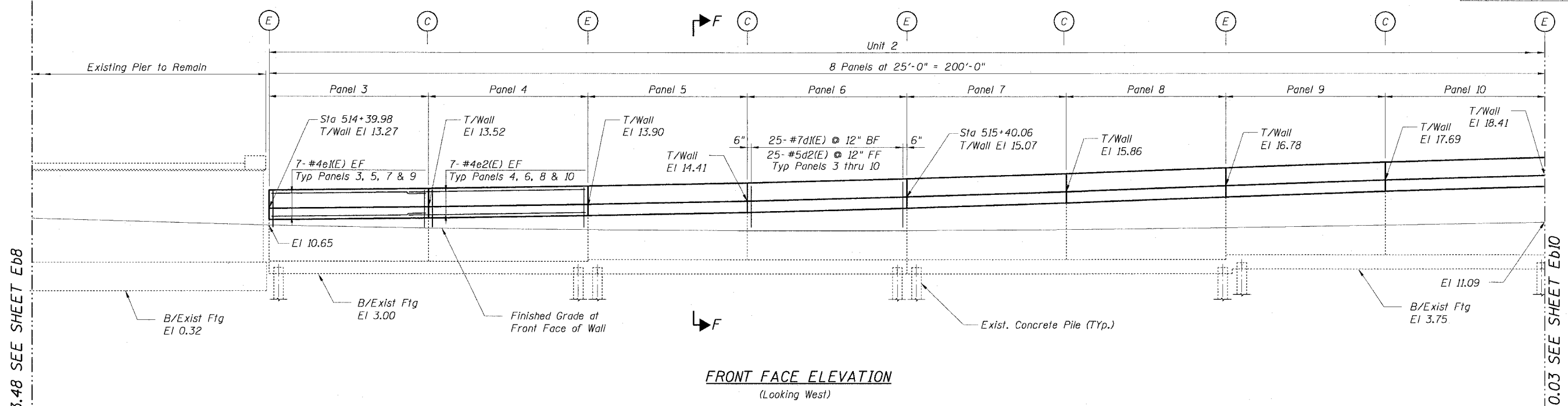


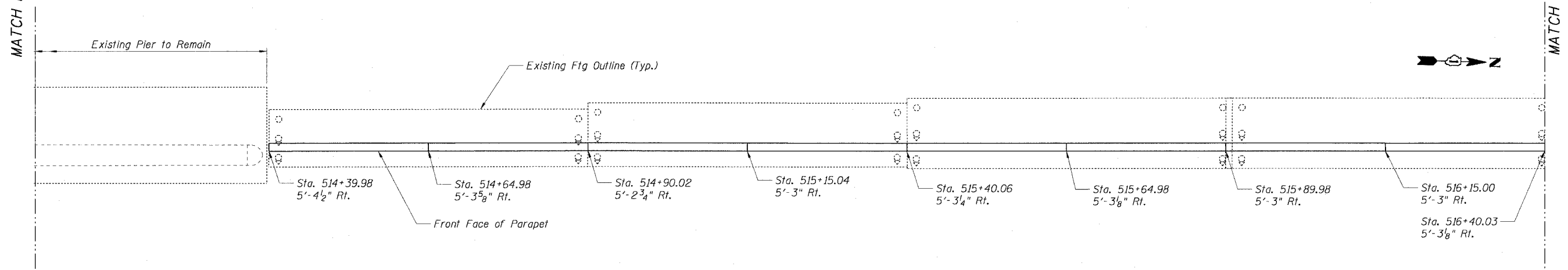
STATE OF ILLINOIS
DEPARTMENT OF TRANSPORTATION

| | | | | |
|---|-----------------|--------|--------------|-----------|
| F.A.I. RTE. | SECTION | COUNTY | TOTAL SHEETS | SHEET NO. |
| 90/94 | 2021-922PT.1-AC | COOK | 460 | 297 |
| STA. | TO STA. | | | |
| FED. ROAD DIST. NO. 1 ILLINOIS FED. AID PROJECT | | | | |

62693



FRONT FACE ELEVATION
(Looking West)



PLAN VIEW

MATCH LINE STA 514+03.48 SEE SHEET Eb8

MATCH LINE STA. 516+40.03 SEE SHEET Eb10



| REVISIONS | |
|-----------|------|
| NAME | DATE |
| | |
| | |
| | |
| | |
| | |
| | |
| | |
| | |
| | |
| | |

ILLINOIS DEPARTMENT OF TRANSPORTATION
F.A.I. 90/94 (DAN RYAN EXPRESSWAY)
DETAILED PLAN AND ELEVATION
SOUTH WELLS STREET RETAINING WALL
WEST 62ND STREET TO WEST 59TH STREET
SECTION 2021-922PT.1-AC
STATION 513+16.20 TO 528+23.69
COOK COUNTY SN. 016-W906-W903
SCALE: None DRAWN BY: RJ/CHD
DATE: October 29, 2004 CHECKED BY: AJS/MM

Sheet Eb9 of 23

10/27/2004 04:52:35 PM