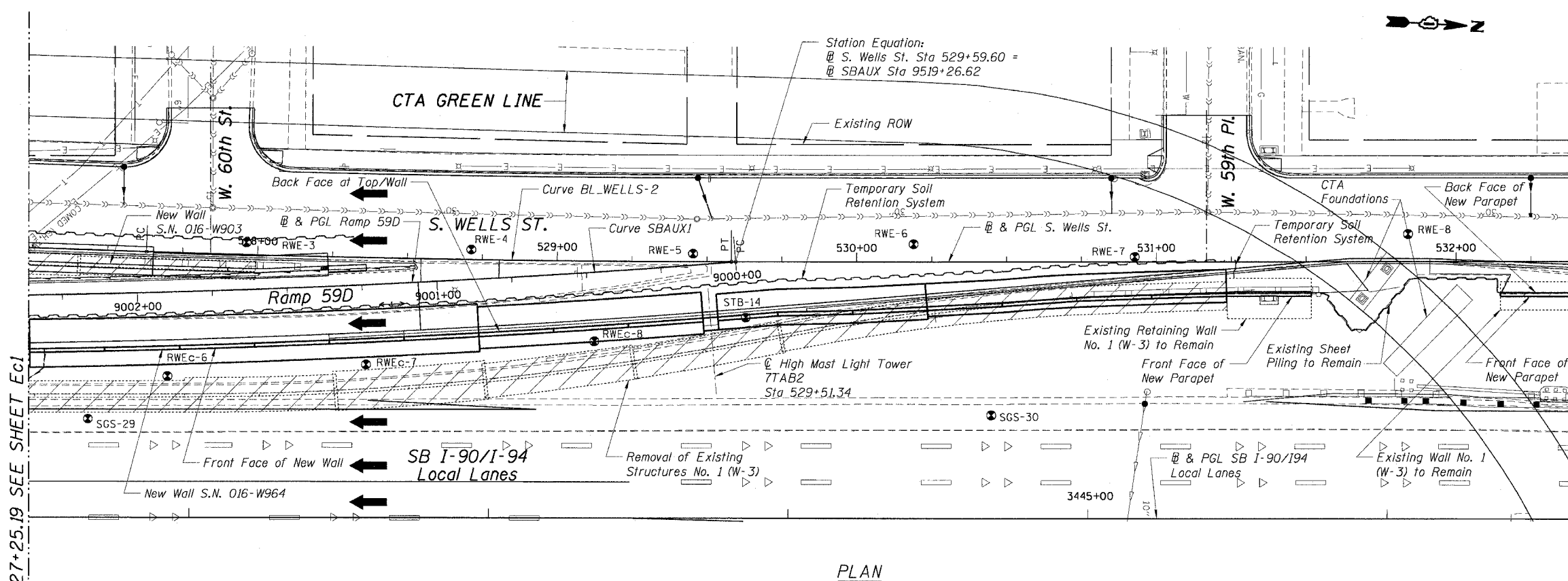


STATE OF ILLINOIS
DEPARTMENT OF TRANSPORTATION

F.A.I. RTE.	SECTION	COUNTY	TOTAL SHEETS	SHEET NO.
90/94	2021-922PT.1-AC	COOK	460	313
STA.	TO STA.			
FED. ROAD DIST. NO. 1	ILLINOIS	FED. AID PROJECT	62693	



PLAN

MATCH LINE STA. 527+25.19 SEE SHEET Ec1

MATCH LINE STA. 532+38.76 SEE SHEET Ec3

CURVE SBAUX1

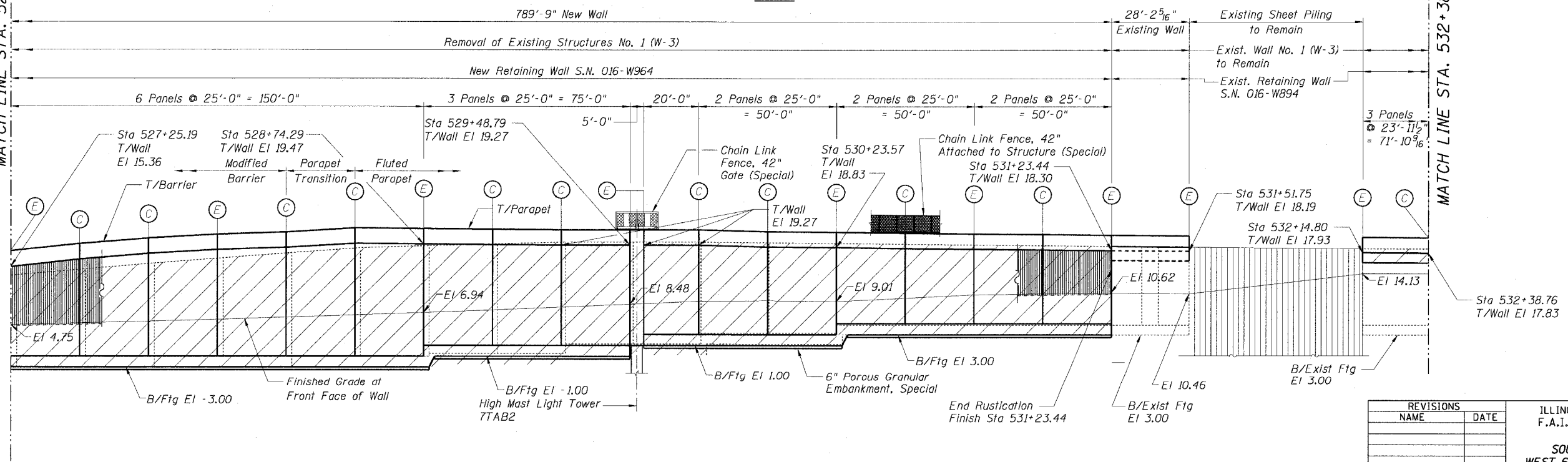
P.I. STA= 9001+46.37
N= 1,865,209.16
E= 1,175,573.36
Δ= 4° 39' 23"
D= 1° 35' 30"
R= 3600.00'
T= 146.37'
L= 292.57'
E= 2.97'
e= N/A
T.R.= N/A
S.E. RUN= N/A
P.C. STA= 9000+00.00
N= 1,865,354.66
E= 1,175,557.49
P.T. STA= 9002+92.57
N= 1,865,062.84
E= 1,175,577.36

CURVE BL-WELL-2

P.I. STA= 528+60.56
N= 1,865,255.64
E= 1,175,560.31
Δ= 1° 57' 29"
D= 1° 00' 09"
R= 5715.00'
T= 97.67'
L= 195.31'
E= 0.83'
e= N/A
T.R.= N/A
S.E. RUN= N/A
P.C. STA= 527+62.89
N= 1,865,157.98
E= 1,175,559.75
P.T. STA= 529+58.21
N= 1,865,353.27
E= 1,175,557.53

CURVE SBAUX2

P.I. STA= 9005+64.11
N= 1,864,791.41
E= 1,175,584.78
Δ= 4° 45' 49"
D= 1° 02' 30"
R= 5500.00'
T= 228.77'
L= 457.27'
E= 4.76'
e= N/A
T.R.= N/A
S.E. RUN= N/A
P.C. STA= 9003+35.35
N= 1,865,020.09
E= 1,175,578.53
P.T. STA= 9007+92.62
N= 1,864,564.03
E= 1,175,610.01



FRONT FACE ELEVATION
(Looking West)

REVISIONS	
NAME	DATE

Sheet Ec2 of 20
ILLINOIS DEPARTMENT OF TRANSPORTATION
F.A.I. 90/94 (DAN RYAN EXPRESSWAY)
GENERAL PLAN II
SOUTH WELLS ST. RETAINING WALL
WEST 61ST STREET TO WEST 59TH STREET
SECTION 2021-922PT.1-AC
STATION 523+36.03 TO STATION 533+88.42
COOK COUNTY S.N. 016-W964, 016-W894
SCALE: NONE DRAWN BY: KWT
DATE: October 29, 2004 CHECKED BY: CG/AJS

