

STATE OF ILLINOIS
DEPARTMENT OF TRANSPORTATION

F.A.I. RTE.	SECTION	COUNTY	TOTAL SHEETS	SHEET NO.
90/94	2021-922PT.1-AC	COOK	460	314
STA.	TO STA.			
FED. ROAD DIST. NO. 1	ILLINOIS	FED. AID PROJECT		

62693

GENERAL NOTES:

- Station and offsets are measured from @ & PGL S. Wells St. to the front face of the retaining wall.
- Existing utilities in conflict with retaining wall shall be abandoned or relocated according to directions given in the Roadway Plans.
- All construction joints shall be bonded.
- All exposed concrete edges shall have a 3/4" by 45° chamfer except where shown otherwise. Chamfer on vertical edges shall be continued a minimum of 1 foot below the finished ground line.
- A protective coat shall be applied according to Section 503.19 of the Standard Specifications to all concrete surfaces not in contact with soil.
- The back face of Retaining Wall shall be waterproofed according to Article 503.18 of the Standard Specifications.
- Reinforcement bars shall conform to the requirements of AASHTO M31 or M322, Grade 60.
- Reinforcement bars designated "(E)" shall be epoxy coated.
- Concrete barrier (Special) for High Mast Light Tower foundation protection is detailed on Roadway Plans and paid for under Roadway Items.
- Plan Dimensions and Details relating to Existing Structures have been taken from Existing Plans and are subject to Nominal Construction Variations. It shall be The Contractor's responsibility to verify such Dimensions and Details in the Field and make necessary approved adjustments prior to Construction or ordering of Materials. Such variations shall not be cause for additional compensation or a change in the Scope of Work. However The Contractor will be paid for the Quantity actually furnished at the Unit Price for the Work.
- The Contractor shall protect the earth in front of existing and proposed retaining walls during construction of light tower foundations and service pads. For light tower foundations in front of the new retaining walls, the contractor shall coordinate the construction of the retaining walls, light tower foundations, and service pads to occur concurrently. If the contractor does not perform the work concurrently he shall provide a temporary soil retention system to protect the retaining wall from being undermined during light tower construction work which shall be included in the cost of the light tower foundation work.

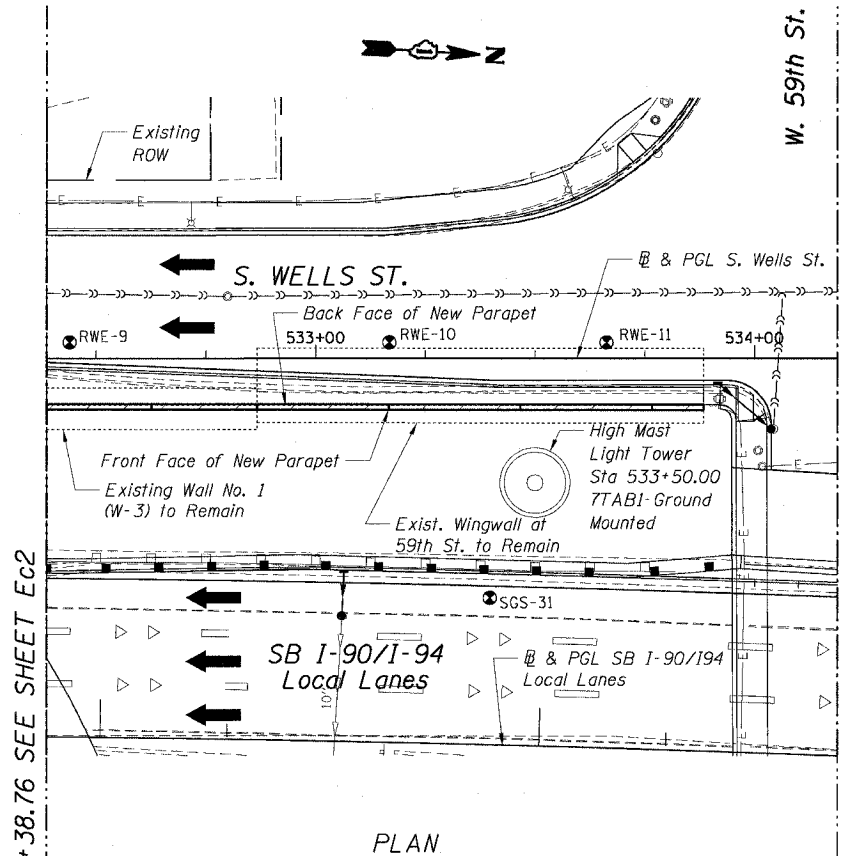
NOTES:

- For Index of Sheets, see Sheet Ec1.
- For Legend and Abbreviation see Sheet Ec1
- For Typical Sections, see Sheets Ec4 and Ec5.
- For Limits of Temporary Soil Retention System, see Sheet Ec5.
- For Detailed Plan & Elevation, see Sheets Ec6 to Ec10.
- For Wall Sections, see Sheets Ec11 to Ec13.
- For Boring Logs, see Sheets Ec17 to Ec20.
- For High Mast Light Towers, see LTF Sheets.
- For Chain Link Fence, 42" Attached to Structure (Special) Details, see Sheet SD1.
- For Chain Link Fence, 42" Gate (Special) Details see Sheets SD2-SD5.
- For Rustication Details, see Sheet SD6.

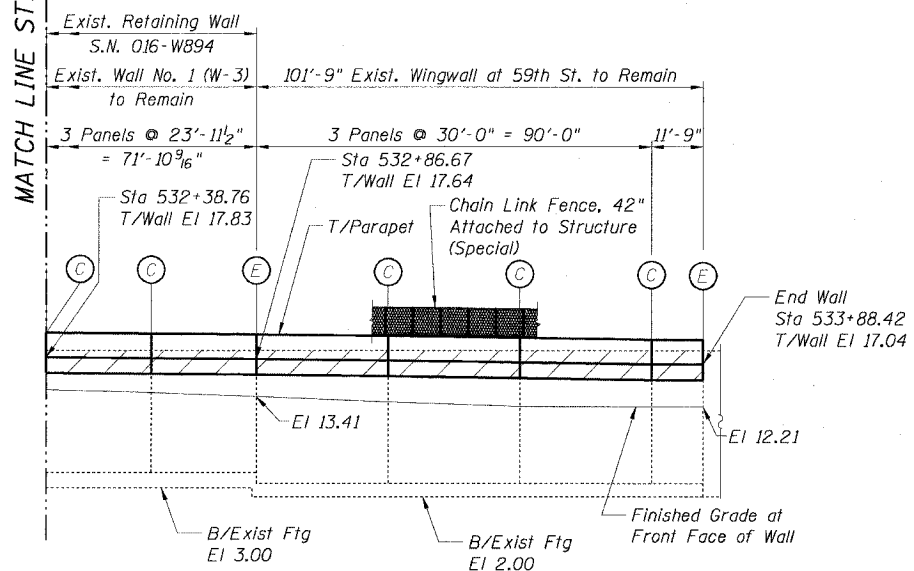
Sheet Ec3 of 20

REVISIONS	
NAME	DATE

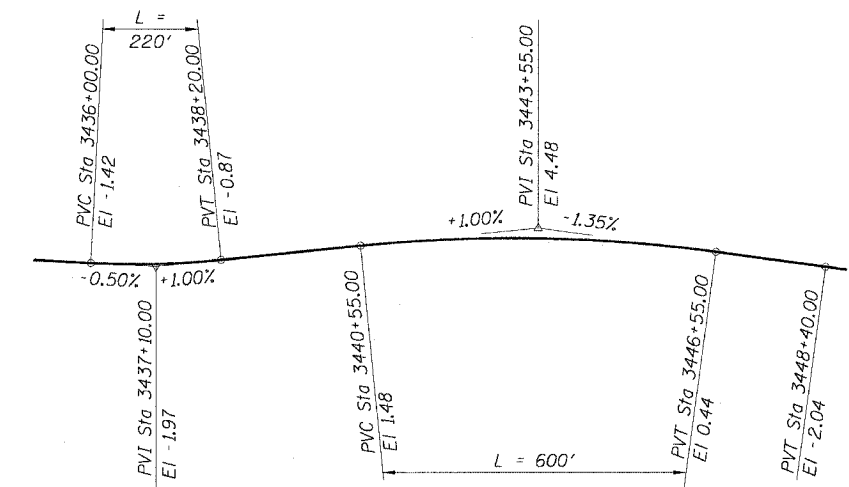
ILLINOIS DEPARTMENT OF TRANSPORTATION
F.A.I. 90/94 (DAN RYAN EXPRESSWAY)
GENERAL PLAN III
SOUTH WELLS ST. RETAINING WALL
SECTION 2021-922PT.1-AC
STATION 523+36.03 TO STATION 533+88.42
COOK COUNTY S.N. 016-W964, 016-W894
SCALE: NONE DRAWN BY: KWT
DATE: October 29, 2004 CHECKED BY: CG/AJS



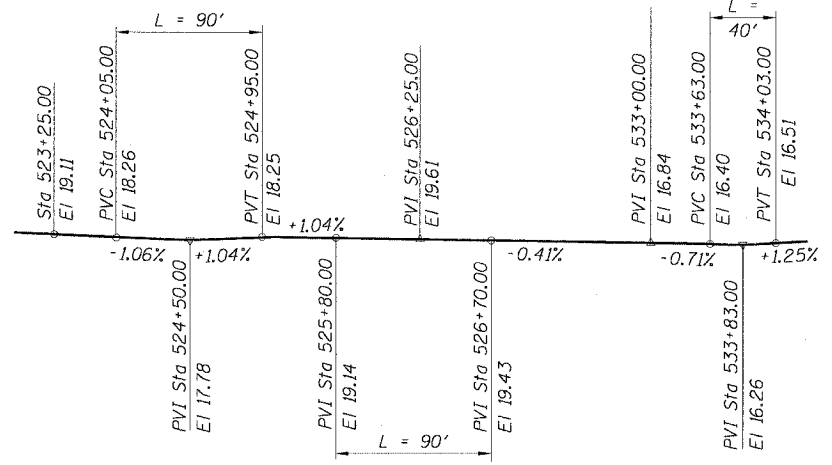
PLAN



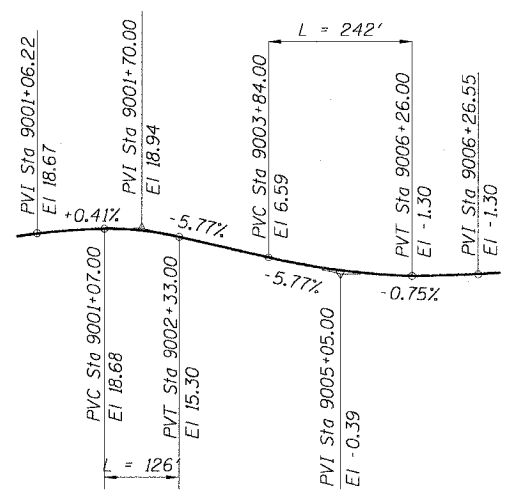
FRONT FACE ELEVATION
(Looking West)



PROFILE GRADE - SB I-90/I-94 LOCAL LANES
(Along @ of Roadway)



PROFILE GRADE - S. WELLS ST.
(Along @ of Roadway)



PROFILE GRADE - RAMP 59D
(Along @ of Roadway)

CTE ENGINEERS
CONSOER TOWNSEND ENVIRONMENTAL ENGINEERS, INC.
303 EAST WACKER DRIVE, SUITE 600
CHICAGO ILLINOIS 60601-5292, PHONE: (312) 939-0300

17/23/2004 11:08:32 AM