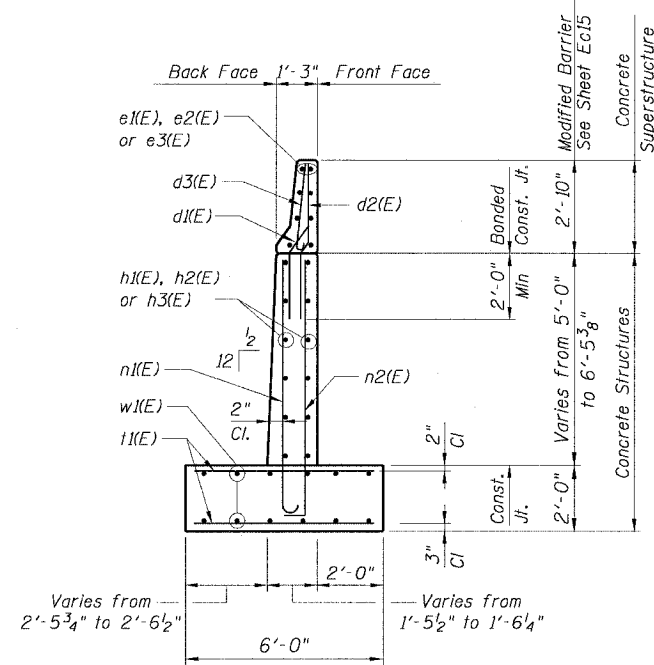


STATE OF ILLINOIS  
DEPARTMENT OF TRANSPORTATION

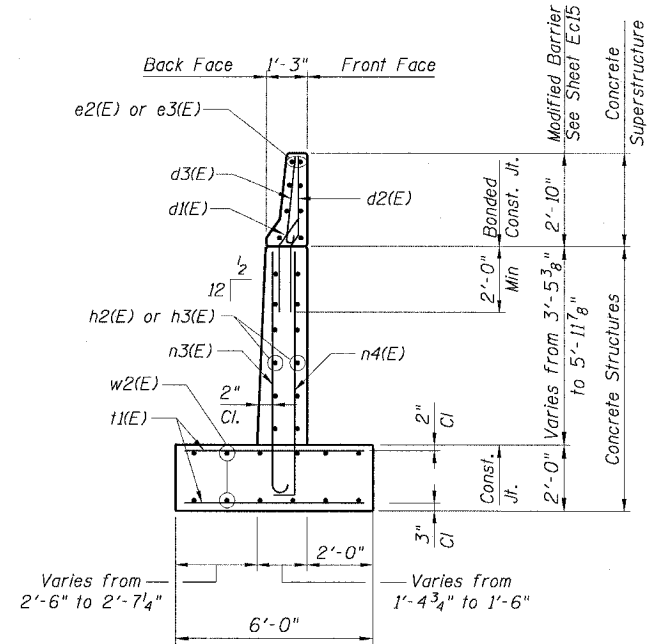
F.A.I. RT.	SECTION	COUNTY	TOTAL SHEETS	SHEET NO.
90/94	2021-922PT.1-AC	COOK	460	322
STA.	TO STA.			
FED. ROAD DIST. NO. 1	ILLINOIS	FED. AID PROJECT		

62693



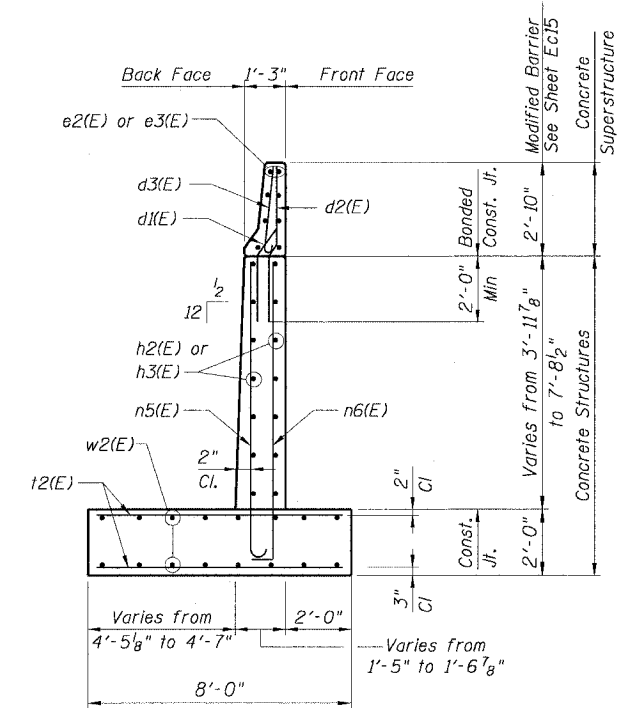
**SECTION A-A**

Sta. 523+36.03 to Sta. 524+25.50  
Maximum Applied Bearing Pressure: 3.40 Ksf



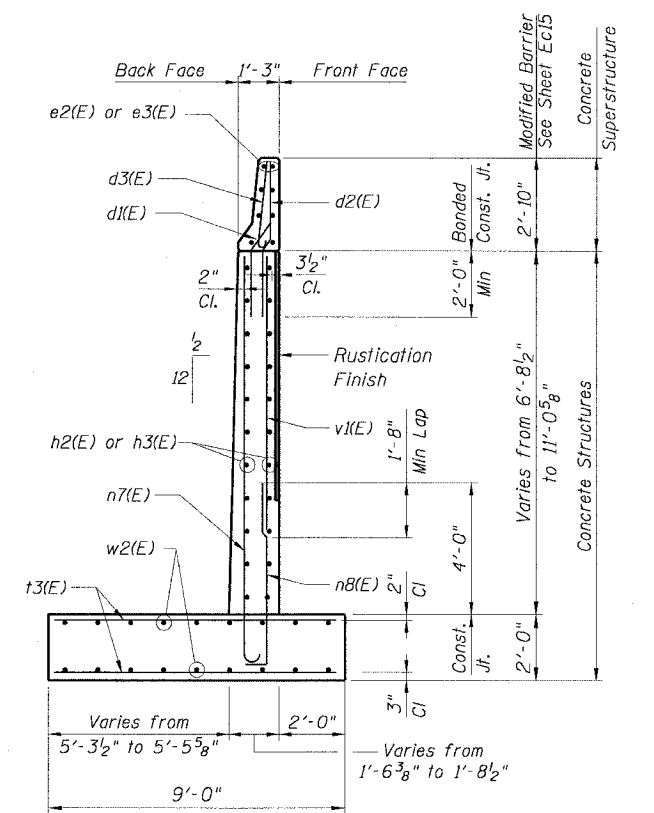
**SECTION B-B**

Sta. 524+25.50 to Sta. 525+00.36  
Maximum Applied Bearing Pressure: 3.10 Ksf



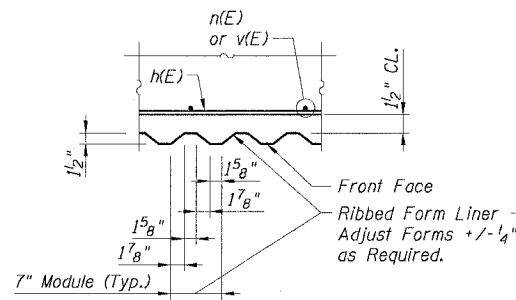
**SECTION C-C**

Sta. 525+00.36 to Sta. 525+75.26  
Maximum Applied Bearing Pressure: 2.70 Ksf

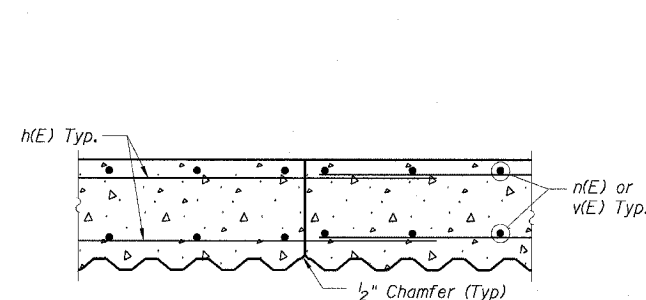


**SECTION D-D**

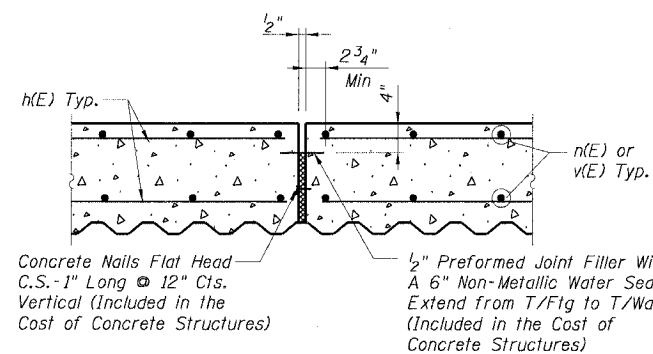
Sta. 525+75.26 to Sta. 526+50.21  
Maximum Applied Bearing Pressure: 3.40 Ksf



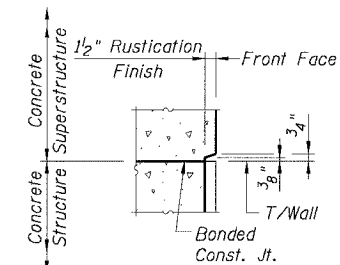
**RUSTICATION FINISH DETAIL**



**CONSTRUCTION JOINT DETAIL W/RUSTICATION**



**EXPANSION JOINT DETAIL W/RUSTICATION**



**RUSTICATION FINISH AT BONDED CONST. JT.**

**NOTES:**

1. For Bar Bending Diagrams see Sheet Ecl6.
2. Work Sheets Ecl1 thru Ecl3 together.
3. Sub-Base for Wall Footings shall be well compacted per Standard Specifications

REVISIONS	
NAME	DATE

11/23/2004 10:42:24 AM