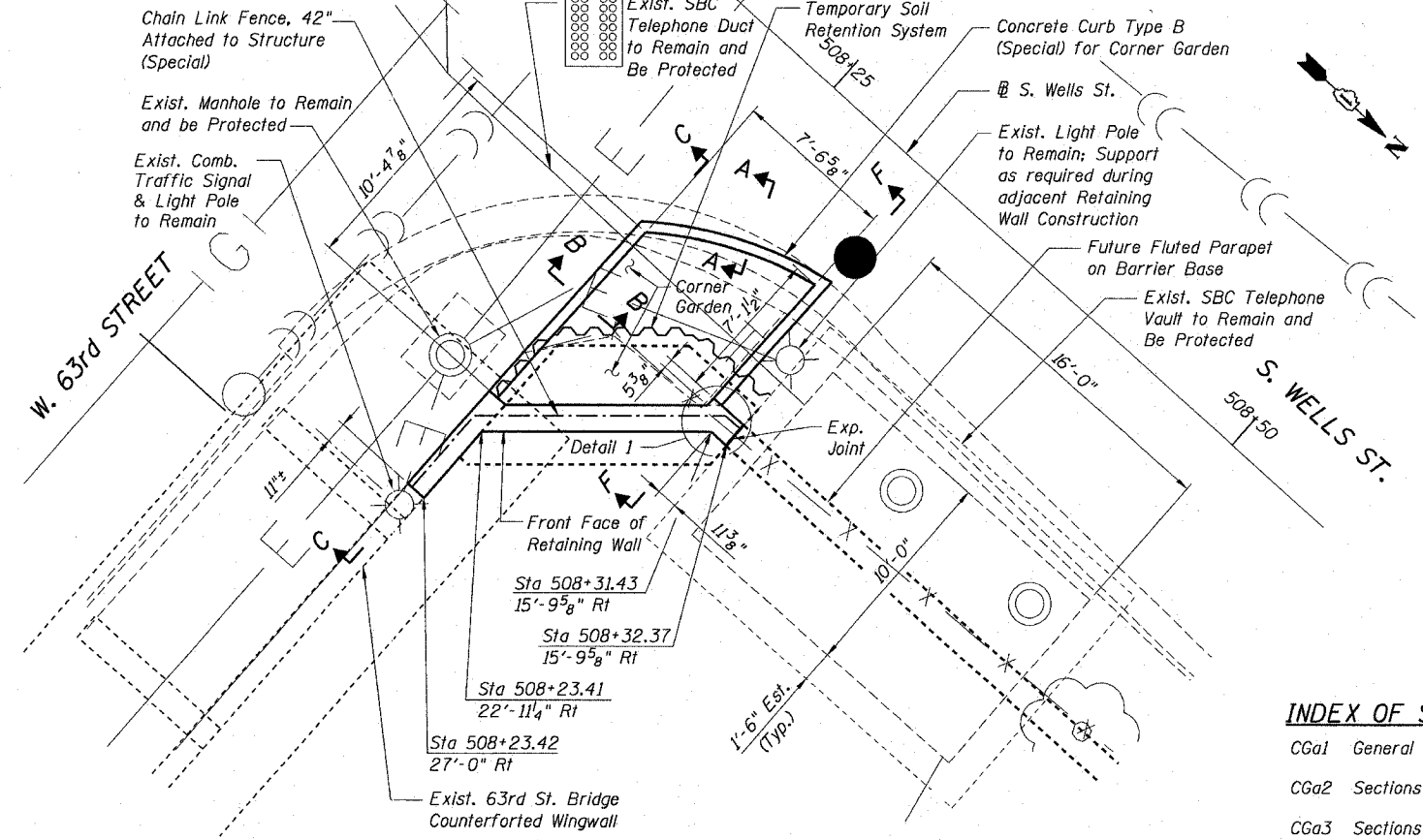


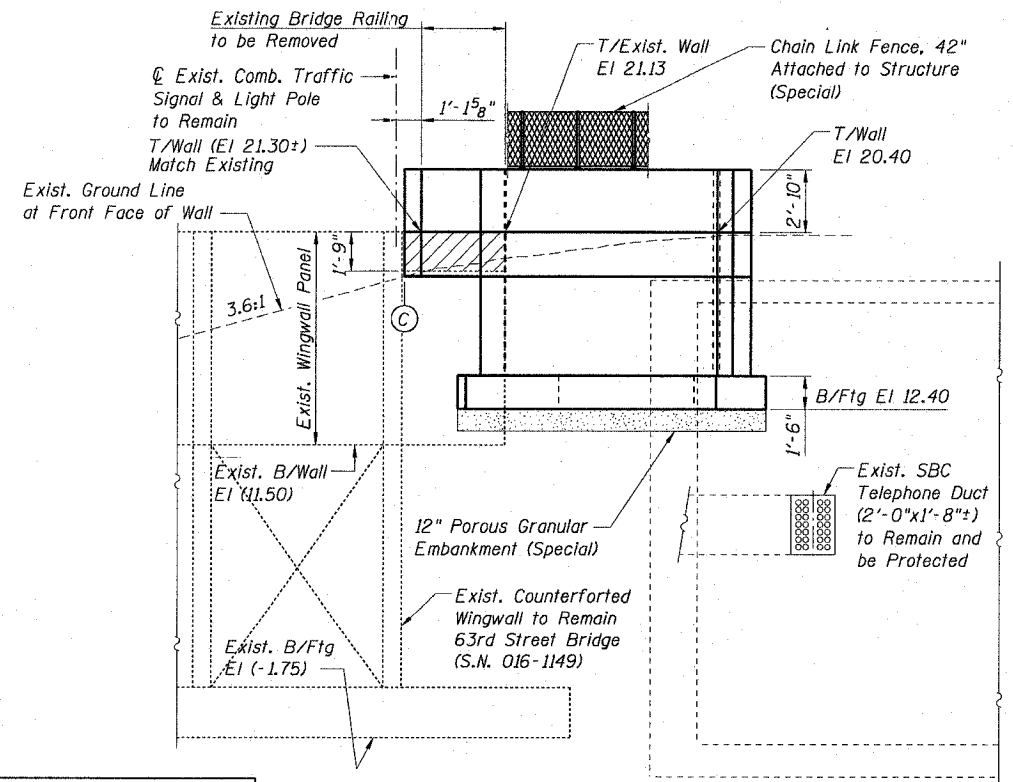
STATE OF ILLINOIS
DEPARTMENT OF TRANSPORTATION

F.A.I. RTE.	SECTION	COUNTY	TOTAL SHEETS	SHEET NO.
90/94	2021-922PT.1-AC	COOK	460	332
STA.	TO STA.			
FED. ROAD DIST. NO. 1	ILLINOIS	FED. AID PROJECT	62693	

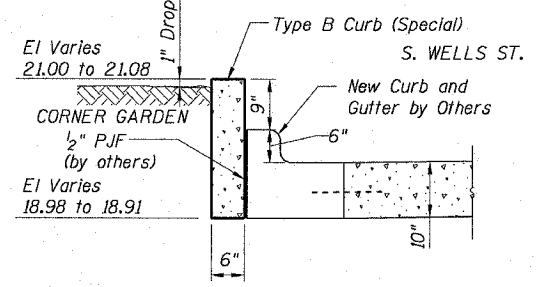
Benchmark:
No. 3533: Brass Disk (CTA Monument) at the Southwest Corner of 63rd Street and Harvard Street El 19.71



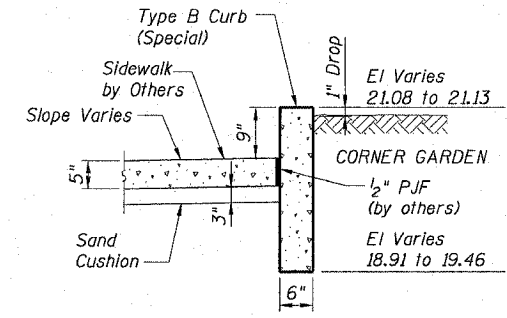
PLAN



ELEVATION
Projected View



SECTION A-A



SECTION B-B

GENERAL NOTES:

- Station and offsets are measured from PGL & PGL S. Wells St. to the front face of the new retaining wall.
- Existing utilities in conflict with new retaining wall shall be abandoned or relocated according to directions given in the Roadway Plans.
- All exposed concrete edges shall have a $\frac{3}{4}$ " by 45° chamfer except where shown otherwise. Chamfer on vertical edges shall be continued a minimum of 1 foot below the finished ground line.
- A protective coat shall be applied according to Section 503.19 of the Standard Specifications to all concrete surfaces not in contact with soil.
- All construction joints shall be bonded.
- Reinforcement bars shall conform to the requirements of AASHTO M31 or M322, Grade 60.
- Reinforcement bars designated "E" shall be epoxy coated.
- Existing reinforcing steel which is exposed by the concrete removal process, but which is to remain partially embedded in the existing structure shall be cleaned to be free of existing concrete & rust, strengthened if necessary and recast into the new concrete. (Cost included with Concrete Removal).
- The back face of the Retaining Wall shall be waterproofed according to Article 503.18 of Standard Specifications.
- The Outlines of Existing Footings have been prepared based on available existing Plans and other information. Actual field conditions may vary due to construction. Plan Dimensions and Details relating to Existing Structures have been taken from Existing Plans and are subject to nominal construction variations. It shall be the Contractor's responsibility to verify such Dimensions and Details in the field and make necessary approved adjustments prior to construction or ordering of Materials. Such variations shall not be cause for additional compensation or a change in the Scope of Work. However, the Contractor will be paid for the Quantity actually furnished at the Unit Price for the Work.
- The Contractor shall take caution not to impact or damage the SBC Telephone Duct & Vault extending along S. Wells St. Any damage to the above facility shall be paid for by the Contractor at his own expense.
- Cost of Removal of Existing Bridge Railing to be included in cost of Concrete Removal.

NOTES:

- For Bill of Material see Sheet CGa4.
- See Civil Drawing for Utility Symbols.
- For details of Concrete Curb Type B (Special) see Roadway Plans.
- For Section C-C see Sheet CGa2.
- For Elevation F-F see Sheet CGa3.
- For Detail 1 see Sheet CGa4.
- Work Sheets CGa1 thru CGa4 together.

DESIGN SPECIFICATIONS

2002 AASHTO, Standard Specifications for Highway Bridges

DESIGN STRESSES
FIELD UNITS

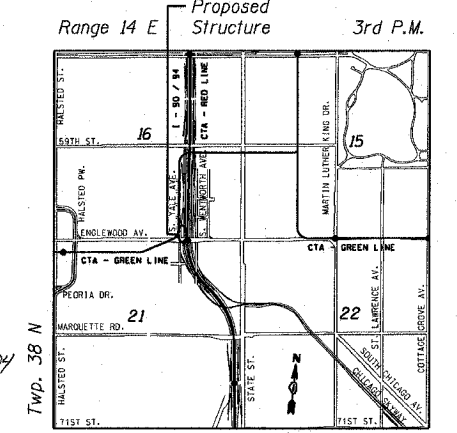
$f'c = 3,500$ psi
 $f_y = 60,000$ psi (Reinf.)

LEGEND:

- Concrete Removal
- Chain Link Fence, 42" Special
- Construction Joint
- New Structure
- Exist. Structure or by Others
- (11.00) - Exist. Plan Historical Elev.

ABBREVIATIONS:

- B Bottom
- BF Back Face
- EF Each Face
- EI Elevation
- FF Front Face
- Fg Footing
- Lt Left
- PJF Preformed Joint Filler
- Rt Right
- Sta Station
- T Top



LOCATION SKETCH



Matthew J. Pregmon - 10/29/04
EXPIRATION DATE: 11-30-2004

REVISIONS	
NAME	DATE

CGa1 OF 4
ILLINOIS DEPARTMENT OF TRANSPORTATION
F.A.I. 90/94 (DAN RYAN EXPRESSWAY)
GENERAL PLAN
NORTHWEST CORNER GARDEN
SOUTH WELLS STREET AT WEST 63rd STREET
SECTION 2021-922 PT.1-AC
STATION 508+23.41 TO 508+32.37
COOK COUNTY
SCALE: None
DATE: October 29, 2004
DRAWN BY: CHD/RJ
CHECKED BY: DC



10/29/2004 02:34:57 PM