

STATE OF ILLINOIS
DEPARTMENT OF TRANSPORTATION

INDEX OF SHEETS

- CGc1 General Plan
- CGc2 Sections and Details
- CGc3 Sections, Details & Bill of Material

GENERAL NOTES:

1. Station and offsets are measured from B & PGL S. Wentworth Ave. to the front face of the new Retaining Wall.
2. Existing utilities in conflict with new Corner Garden shall be abandoned or relocated according to directions given in the Roadway Plans.
3. All exposed concrete edges shall have a 3/4" by 45° chamfer except where shown otherwise. Chamfer on vertical edges shall be continued a minimum of 1 foot below the finished ground line.
4. A protective coat shall be applied according to Section 503.19 of the Standard Specifications to all concrete surfaces not in contact with soil.
5. All construction joints shall be bonded.
6. Reinforcement bars shall conform to the requirements of AASHTO M31 or M322, Grade 60.
7. Reinforcement bars designated "E" shall be epoxy coated.
8. Existing reinforcing steel which is exposed by the concrete removal process, but which is to remain partially embedded in the existing structure shall be cleaned to be free of existing concrete & rust. Strengthened if necessary and recast into the new concrete. (Cost included with Concrete Removal).
9. The back face of Retaining Wall be waterproofed according to Article 503.18 of Standard Specifications.
10. The Outlines of Existing Footings have been prepared based on available existing Plans and other information. Actual field conditions may vary due to construction. Plan Dimensions and Details relating to Existing Structures have been taken from Existing Plans and are subject to nominal construction variations. It shall be the Contractor's responsibility to verify such Dimensions and Details in the field and make necessary approved adjustments prior to construction or ordering of Materials. Such variations shall not be cause for additional compensation or a change in the Scope of Work. However, the Contractor will be paid for the Quantity actually furnished at the Unit Price for the Work.
11. Cost of Removal of Existing Bridge Railing and Chain Link Fence to be included in cost of Concrete Removal.

NOTES:

1. For Bill of Material see Sheet CGc3.
2. See Civil Drawing for Utility Symbols.
3. For details of Concrete Curb Type B (Special) see Roadway details.
4. For Elevation D-D see Sheet CGc2.
5. For Sections A-A, B-B, C-C, E-E and F-F see Sheet CGc2.
6. For Detail 1 see Sheet CGc2.
7. For Fluted Parapet Details see Sheet CGc3.
8. Work Sheets CGc1 thru CGc3 together.

F.A.I. RTE.	SECTION	COUNTY	TOTAL SHEETS	SHEET NO.
90/94/2021-922PT.1-AC	COOK	460	339	
STA.	TO STA.		62693	
FED. ROAD DIST. NO. 1		ILLINOIS	FED. AID PROJECT	

DESIGN SPECIFICATIONS

2002 AASHTO, Standard Specifications for Highway Bridges

DESIGN STRESSES
FIELD UNITS

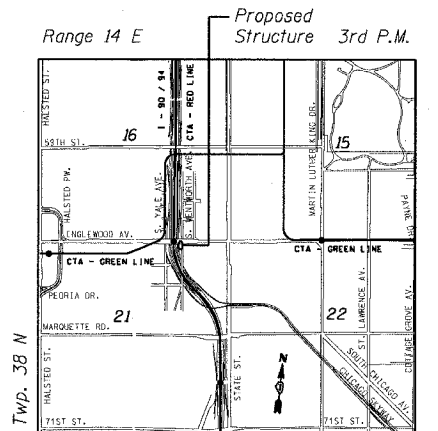
f'c = 3,500 psi
fy = 60,000 psi (Reinf.)

LEGEND:

- Concrete Removal
- Chain Link Fence, Special
- Construction Joint
- Expansion Joint
- New Structure
- Exist. Structure or by Others
- (11.00) - Exist. Plan Historical Elev.

ABBREVIATIONS:

- B Bottom
- BF Back Face
- EF Each Face
- EI Elevation
- FF Front Face
- Ftg Footing
- Lt Left
- PJF Preformed Joint Filler
- Rt Right
- Sta Station
- T Top



LOCATION SKETCH

CGc1 OF 3

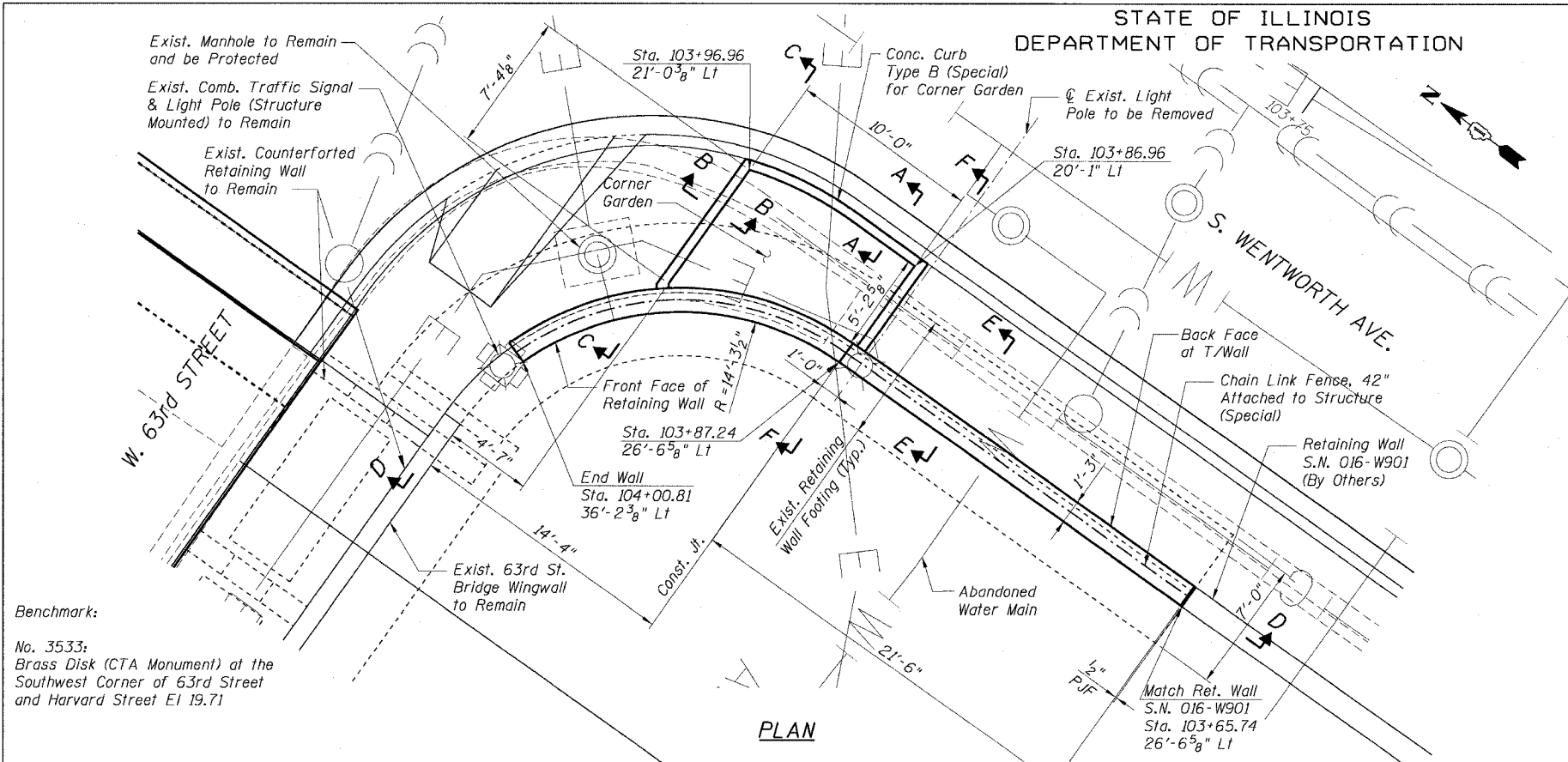
ILLINOIS DEPARTMENT OF TRANSPORTATION
F.A.I. 90/94 (DAN RYAN EXPRESSWAY)
GENERAL PLAN
SOUTHEAST CORNER GARDEN
SOUTH WENTWORTH AVE. AT WEST 63RD STREET
SECTION 2021-922 PT.1-AC
STATION 103+65.74 TO 104+00.81
COOK COUNTY

SCALE: None
DATE: October 29, 2004
DRAWN BY: CHD/RJ
CHECKED BY: DC

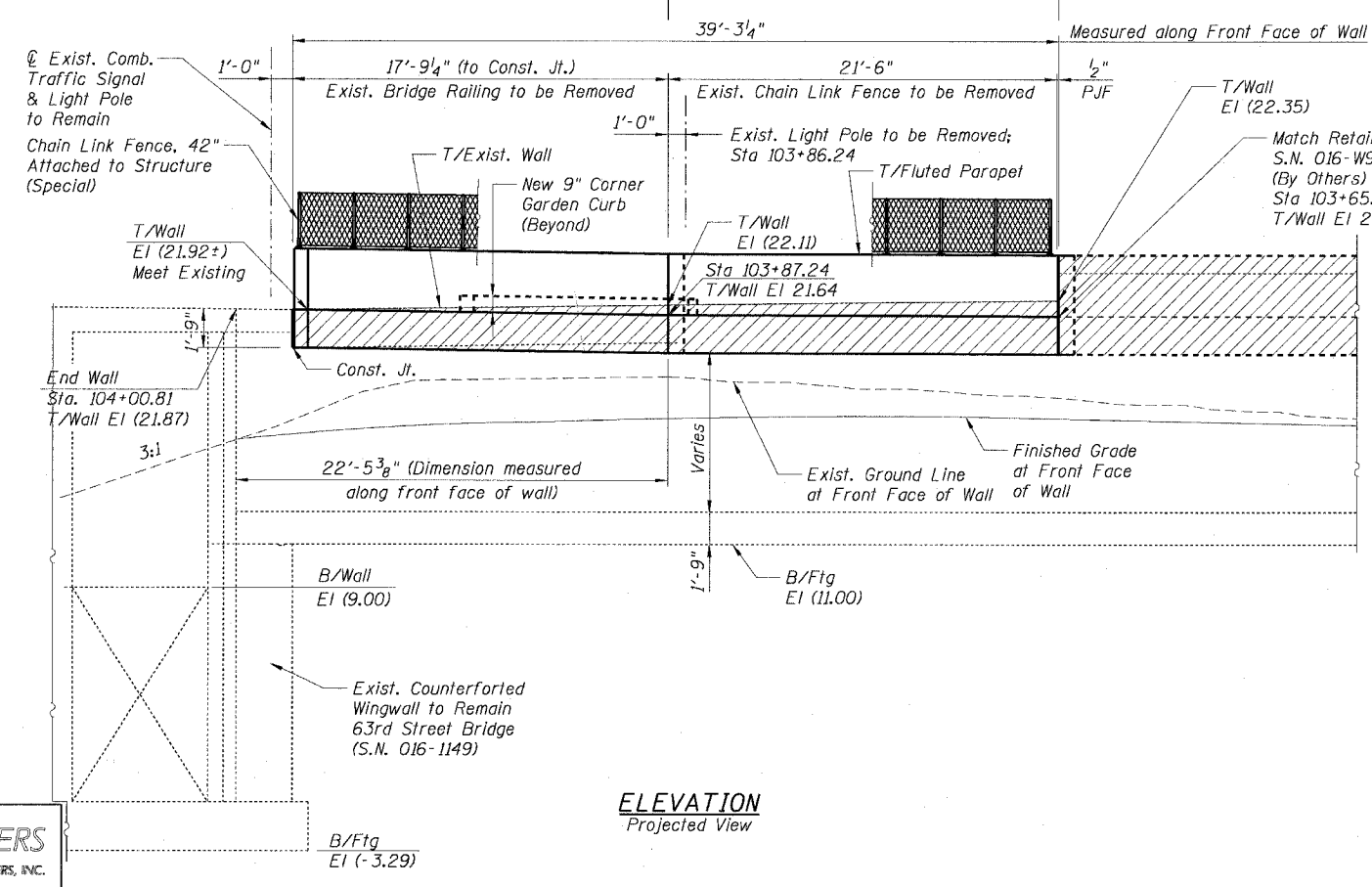


11-22-04
EXPIRATION DATE: 11-30-2004

REVISIONS	
NAME	DATE



PLAN



ELEVATION
Projected View

Benchmark:
No. 3533:
Brass Disk (CTA Monument) at the Southwest Corner of 63rd Street and Harvard Street El 19.71

CTE ENGINEERS
CONCOR TOWNSEND ENGINEERS, INC.
303 EAST WACKER DRIVE, SUITE 600
CHICAGO, ILLINOIS 60601-5212, PHONE: (312) 938-0300

11/22/2004 01:41:30 PM