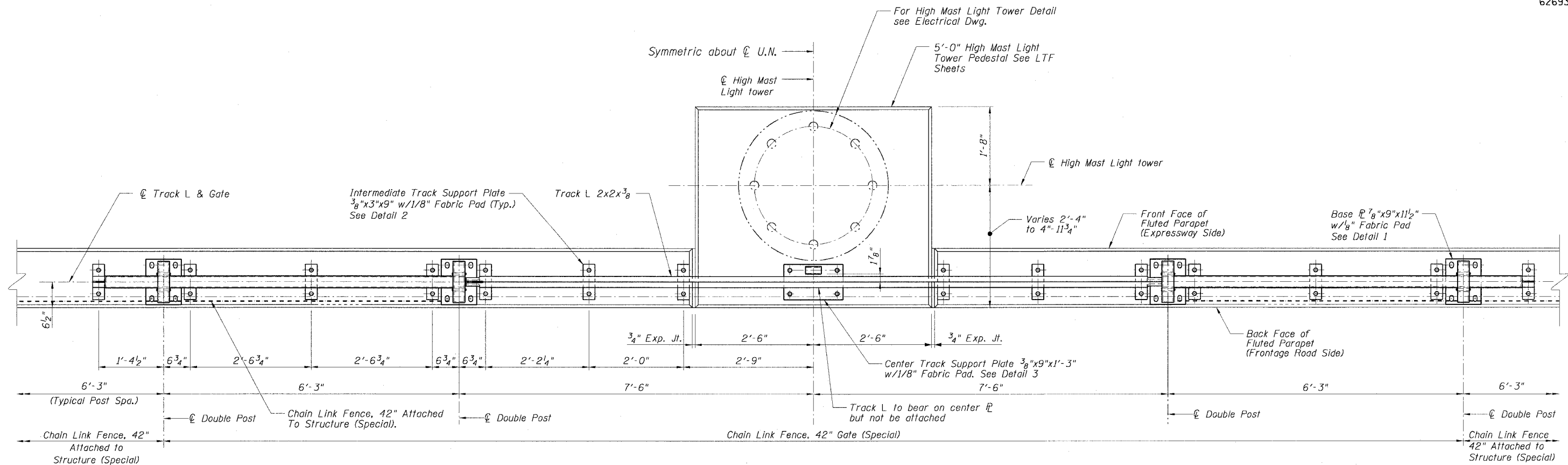


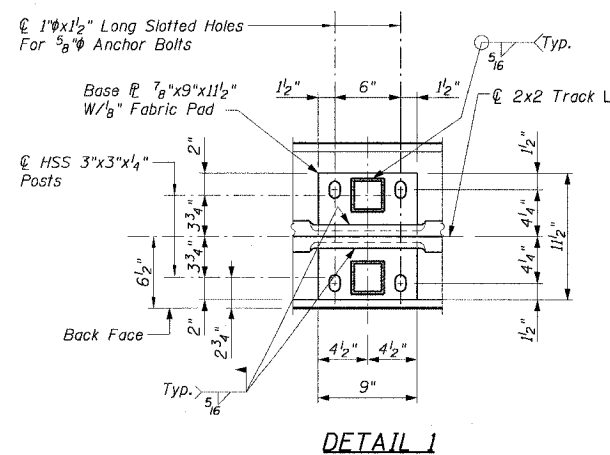
STATE OF ILLINOIS
DEPARTMENT OF TRANSPORTATION

F.A.I. RTE.	SECTION	COUNTY	TOTAL SHEETS	SHEET NO.
90/94	2021-922PT.1-AC	COOK	460	348
STA.	TO STA.			
FED. ROAD DIST. NO. 1	ILLINOIS	FED. AID PROJECT		

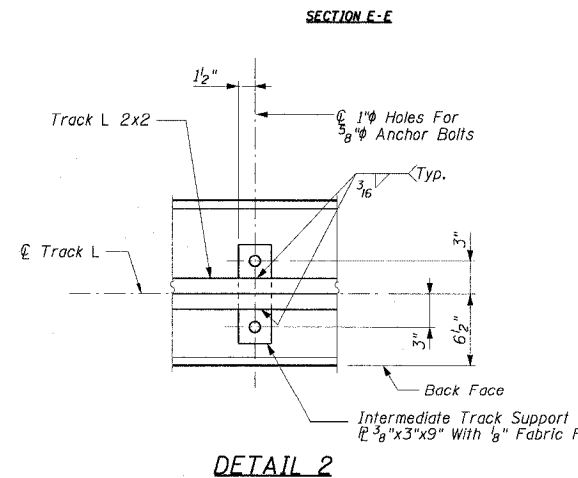
62693



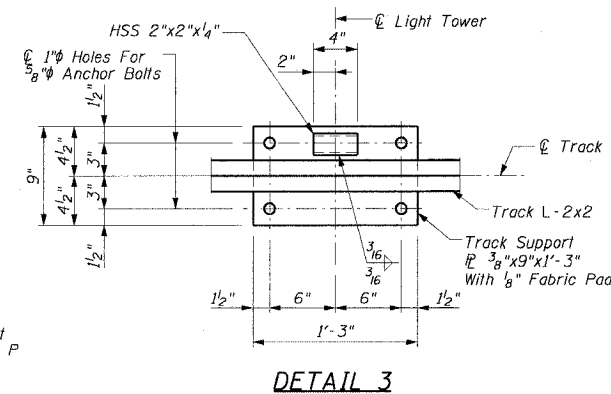
PLAN - GATE IN OPEN POSITION



DETAIL 1



DETAIL 2



DETAIL 3

NOTES:

1. All Bolts Shall Be Stainless Steel Conforming to ASTM F593-98 and F594-98.
2. All Pipes and Bars Shall Be Hot Dipped Galvanized After Fabrication.
3. All Exposed Chain Link Fence, 42" Attached To Structure (Special) and Gate Materials Shall Be Finished With Either Black Vinyl or Powder Coating.
4. For Detail Back Face Elevations See Sheet SD3.
5. F.F. = Front Face
6. B.F. = Back Face
7. For Anchor Bolt Details See Sheet SD4.

SHEET SD3 of 8

REVISIONS	
NAME	DATE

ILLINOIS DEPARTMENT OF TRANSPORTATION
F.A.I. 90/94 (DAN RYAN EXPRESSWAY)
TYPICAL PLAN AND DETAILS
CHAIN LINK FENCE, 42" GATE (SPECIAL)
WEST 69TH STREET TO WEST 47TH STREET
COOK COUNTY

SCALE: None
DATE: October 29, 2004
DRAWN BY: FJD
CHECKED BY: RS