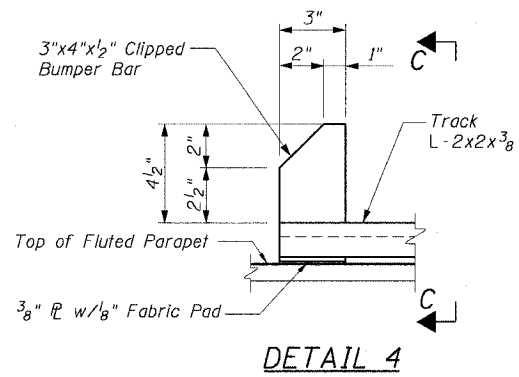
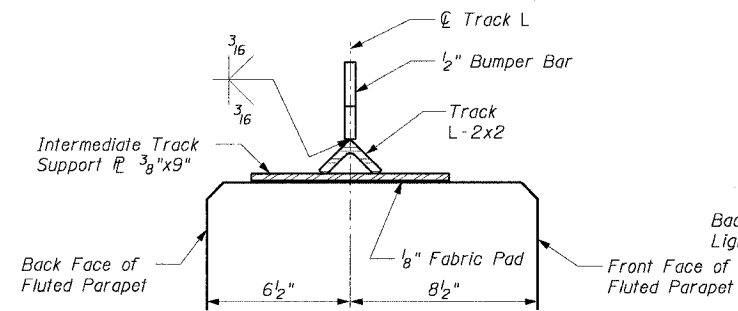


STATE OF ILLINOIS  
DEPARTMENT OF TRANSPORTATION

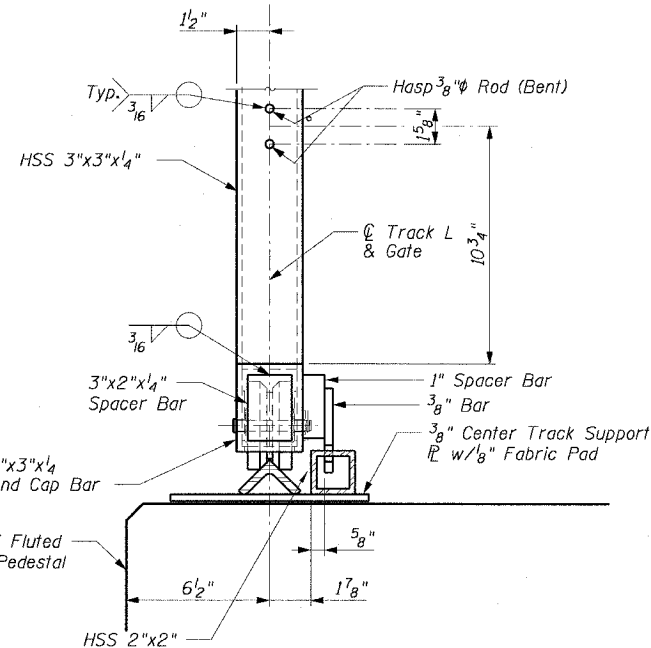
F.A.I. NO.	SECTION	COUNTY	TOTAL SHEETS	SHEET NO.
90/94	2021-922PT.1-AC	COOK	460	350
STA.	TO STA.			
FED. ROAD DIST. NO. 1 ILLINOIS FED. AID PROJECT				
62693				



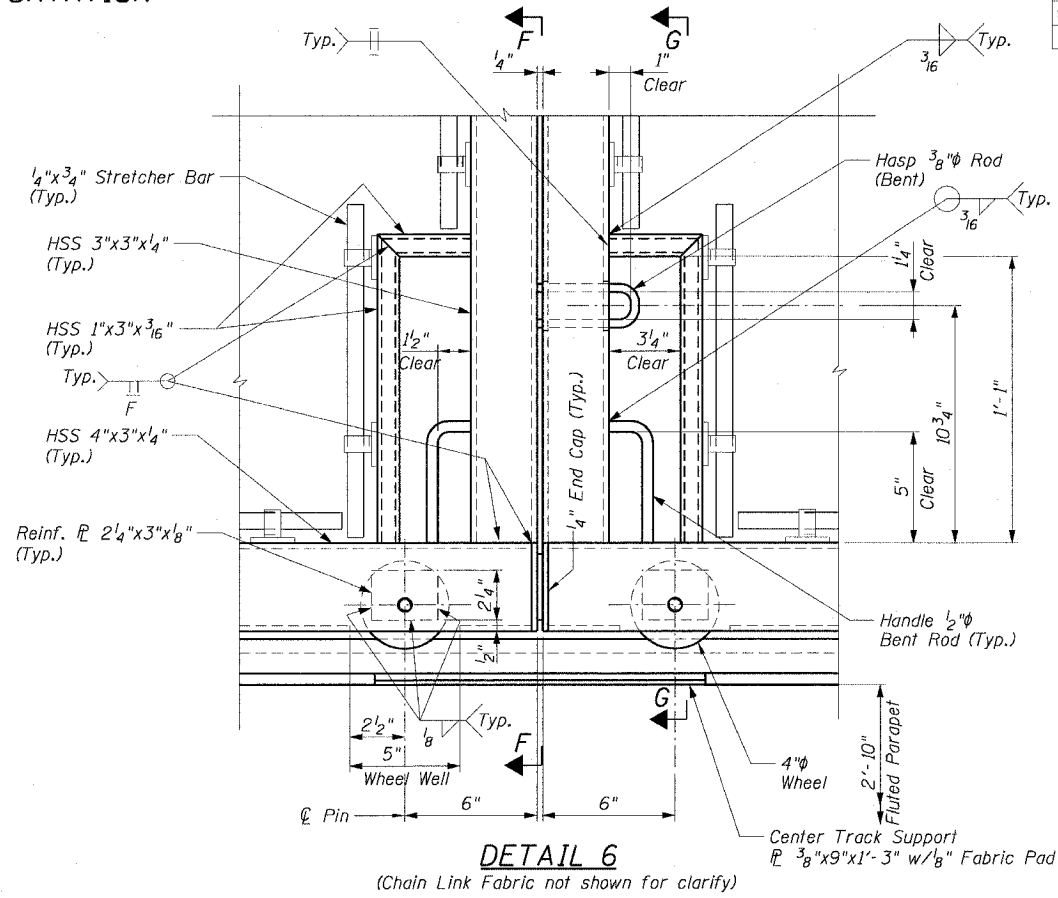
DETAIL 4



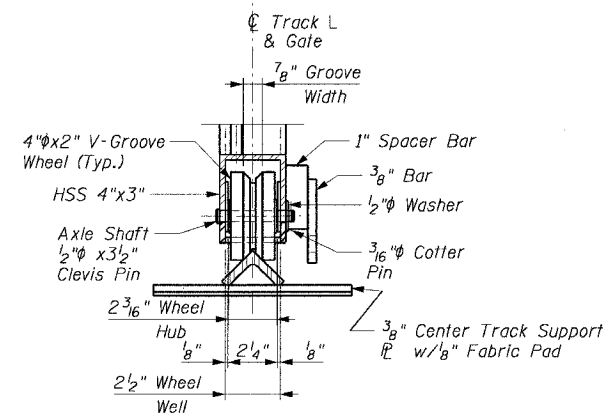
SECTION C-C



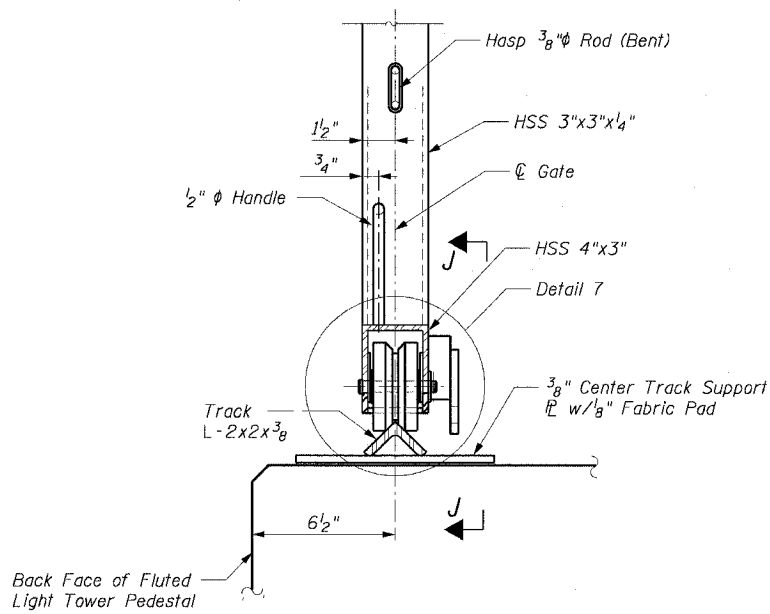
SECTION F-F



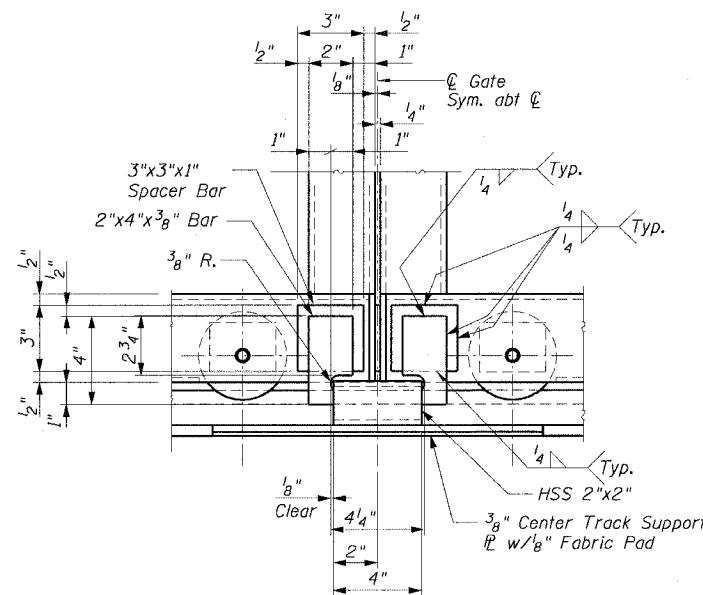
DETAIL 6  
(Chain Link Fabric not shown for clarity)



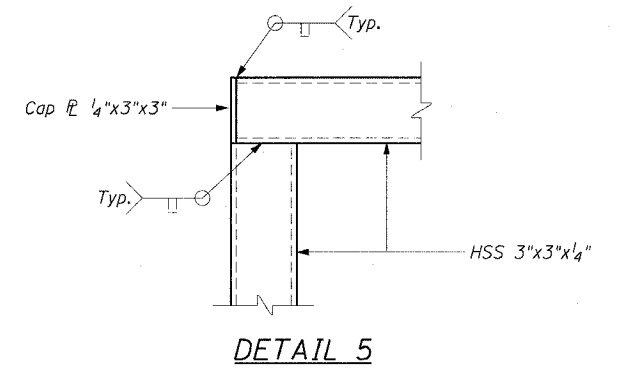
DETAIL 7



SECTION G-G



SECTION J-J



DETAIL 5

NOTES:

1. For Notes See Sheet SD3.
2. For Anchor Bolt Locations See Details 1, 2 and 3 On Sheet SD3.
3. For Anchor Bolt Details See Sheet SD4.
4. For Location of Detail 6 See Sheet SD-2.
5. HSS denotes Hollow Structural Section.

SHEET SD5 of 8

REVISIONS	
NAME	DATE

ILLINOIS DEPARTMENT OF TRANSPORTATION  
F.A.I. 90/94 (DAN RYAN EXPRESSWAY)  
TYPICAL SECTIONS AND DETAILS  
CHAIN LINK FENCE, 42" GATE (SPECIAL)  
WEST 69TH STREET TO WEST 47TH STREET  
COOK COUNTY

SCALE: None  
DATE: October 29, 2004  
DRAWN BY: FJD  
CHECKED BY: RS