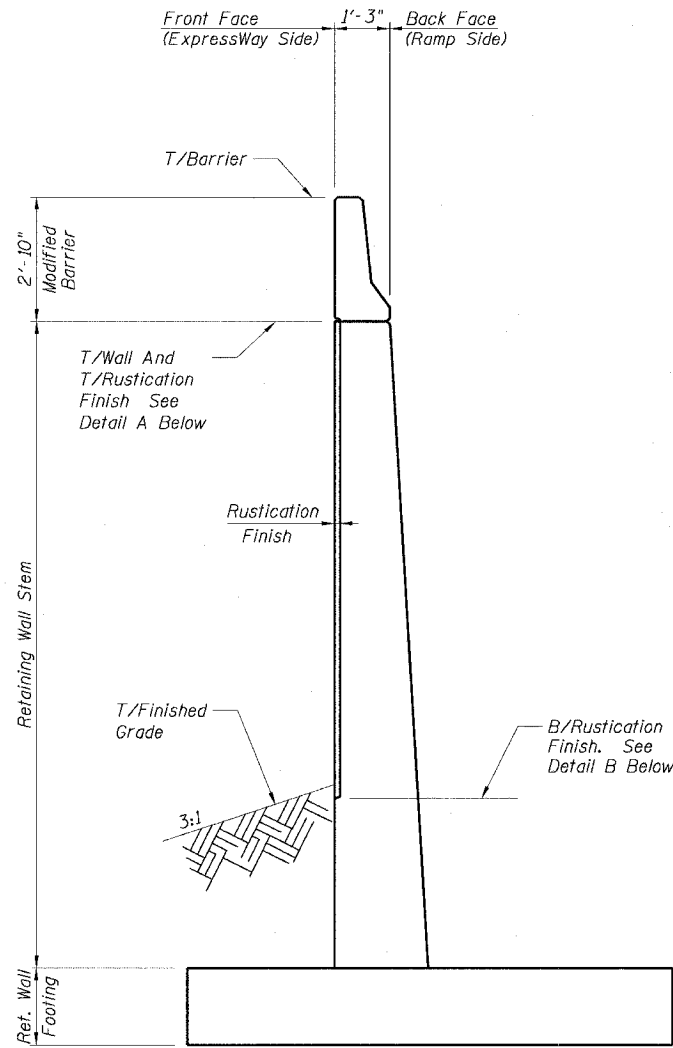


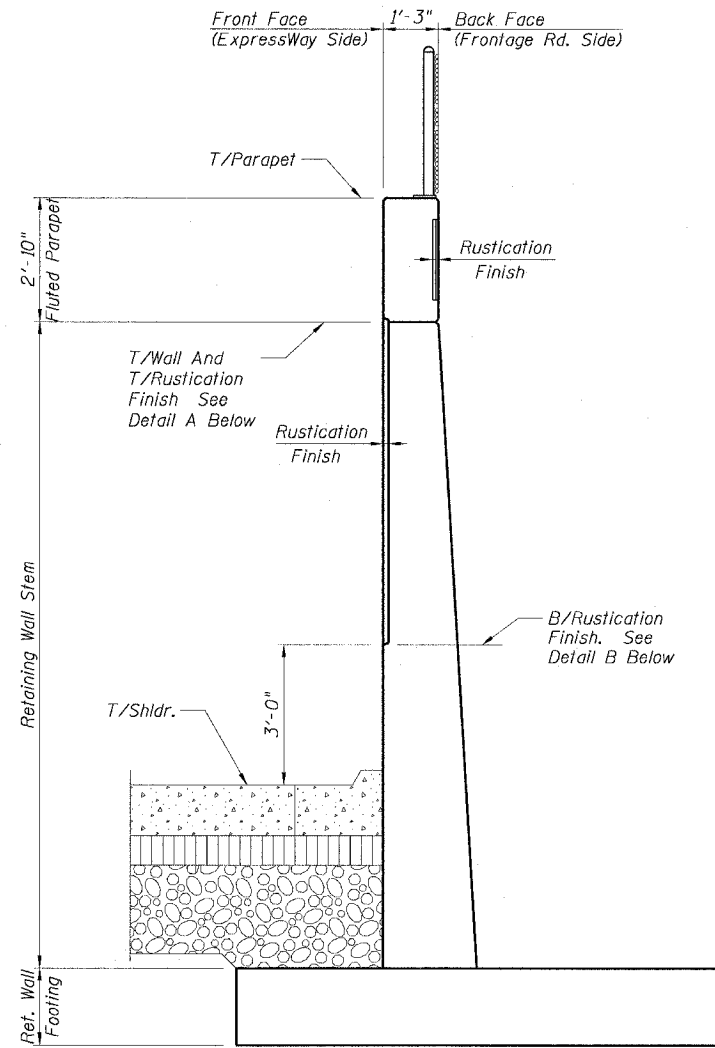
STATE OF ILLINOIS
DEPARTMENT OF TRANSPORTATION

F.A.I. RTE.	SECTION	COUNTY	TOTAL SHEETS	SHEET NO.
90/94	2021-922PT.1-AC	COOK	460	351
STA.	TO STA.			
FED. ROAD DIST. NO. 1	ILLINOIS FED. AID PROJECT			

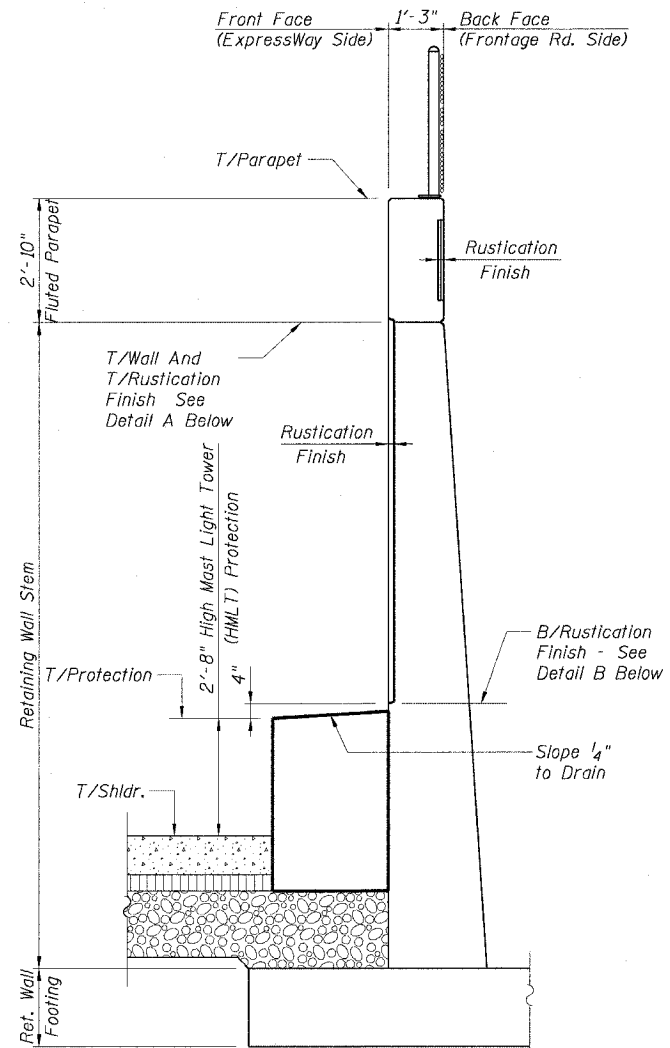
62693



W/RUSTICATION AND FIN. GRADE

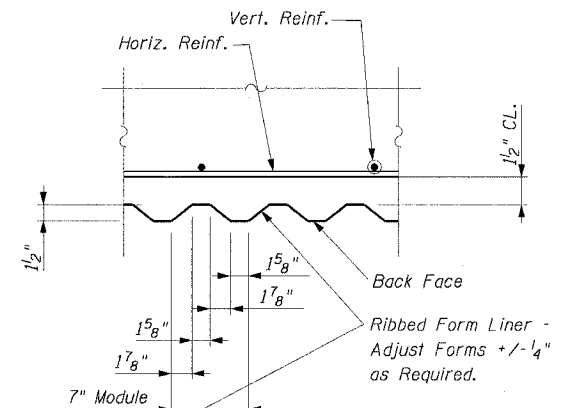


W/RUSTICATION AND SHOULDER

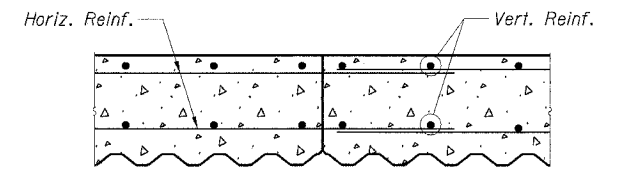


W/RUSTICATION AND LIGHT TOWER PROTECTION

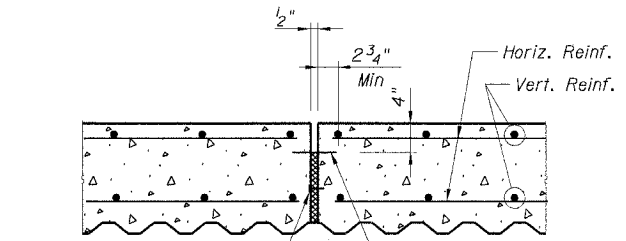
TYPICAL RETAINING WALL SECTIONS



RUSTICATION FINISH DETAIL



CONSTRUCTION JOINT DETAIL W/RUSTICATION



Concrete Nails Flat Head C.S.-1" Long @ 12" Cts. Vertical (Included in the cost of Concrete Superstructure)

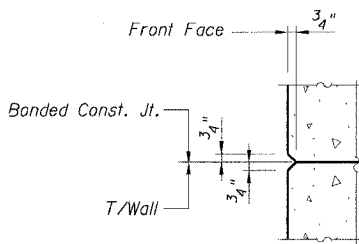
1/2" Preformed Joint Filler with a 6" Non-Metallic Water Seal. Extend from T/Fin to T/Wall. (Included in the cost of Concrete Superstructure)

EXPANSION JOINT DETAIL W/RUSTICATION

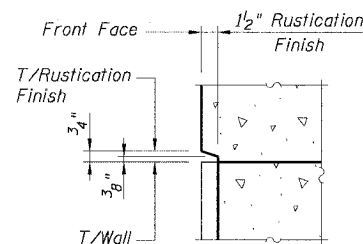
LEGEND:

- Retaining Wall Concrete
- Concrete Pavement
- BAM
- Aggregate Subbase
- Earth

SHEET SD6 of 8

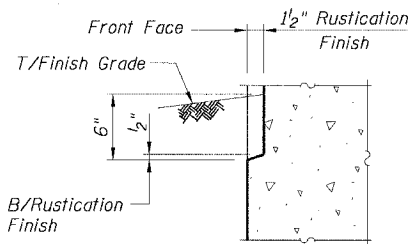


WITHOUT RUSTICATION FINISH



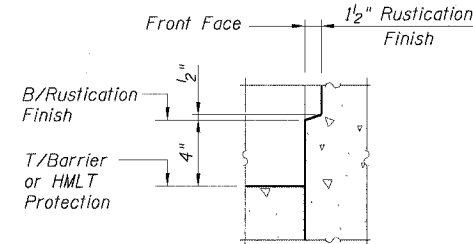
WITH RUSTICATION FINISH

DETAIL A



AT FINISHED GRADE

DETAIL B - BOTTOM OF RUSTICATION FINISH



AT TOP OF BARRIER OR HMLT PROTECTION

REVISIONS	
NAME	DATE

ILLINOIS DEPARTMENT OF TRANSPORTATION
F.A.I. 90/94 (DAN RYAN EXPRESSWAY)

TYPICAL SECTIONS AND DETAILS
RUSTICATION FINISH
WEST 69TH STREET TO WEST 47TH STREET
COOK COUNTY

SCALE: None DRAWN BY: FJD
DATE: October 29, 2004 CHECKED BY: RS

m:\p4\466\struct\47-rw\p4\stf\standard_details\sd6-wall-rustication-sections.dgn 10/22/2004 01:26:02 PM