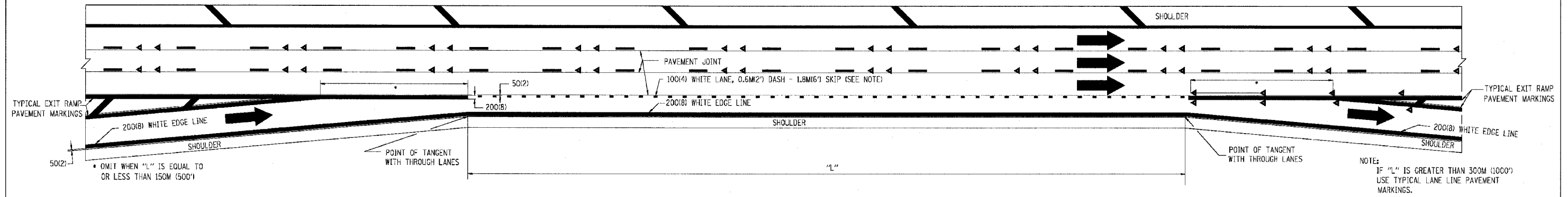
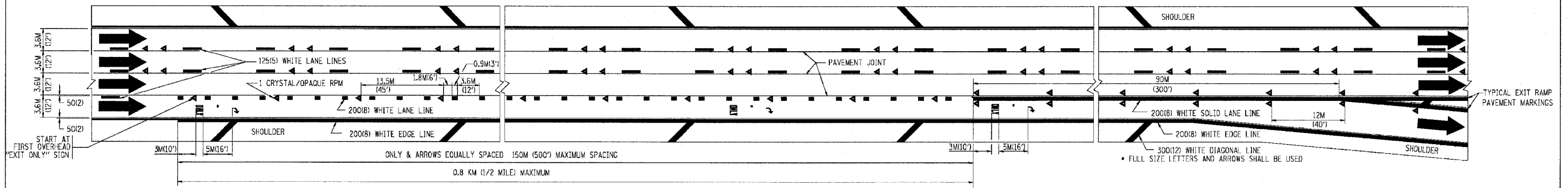


P.A. ETC.	SECTION	COUNTY	TOTAL SHEETS	SHEET NO.
90/54	2021-922PT-1-AC	COOK	460	393
STA.		TO STA.		
FED. ROAD DIST. NO. 1		ILLINOIS		FED. AID PROJECT

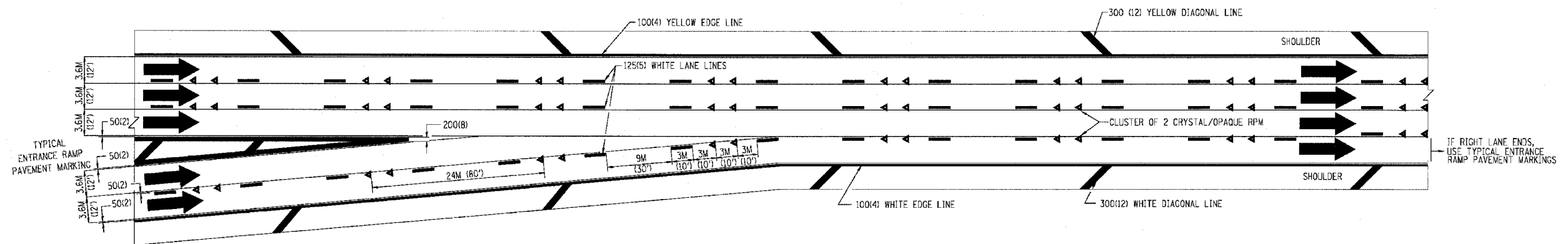
62693



**TYPICAL ENTRANCE/EXIT RAMP COMBINATION PAVEMENT MARKINGS**



**TYPICAL EXIT ONLY LANE PAVEMENT MARKINGS**



**TYPICAL TWO LANE ENTRANCE RAMP PAVEMENT MARKINGS**

REVISIONS	
NAME	DATE
DWS	1/90
DWS	5/91

ILLINOIS DEPARTMENT OF TRANSPORTATION

**MULTI-LANE FREEWAY PAVEMENT MARKING DETAILS**

SCALE: NONE  
DATE: 10/18/2002

DRAWN BY C.A.D.D.  
CHECKED BY  
TC12 SHEET 2 OF 2  
REVISION DATE: 01/01/96

\*DATE-TIME  
\*DGN-SPEC  
\*VMT-02