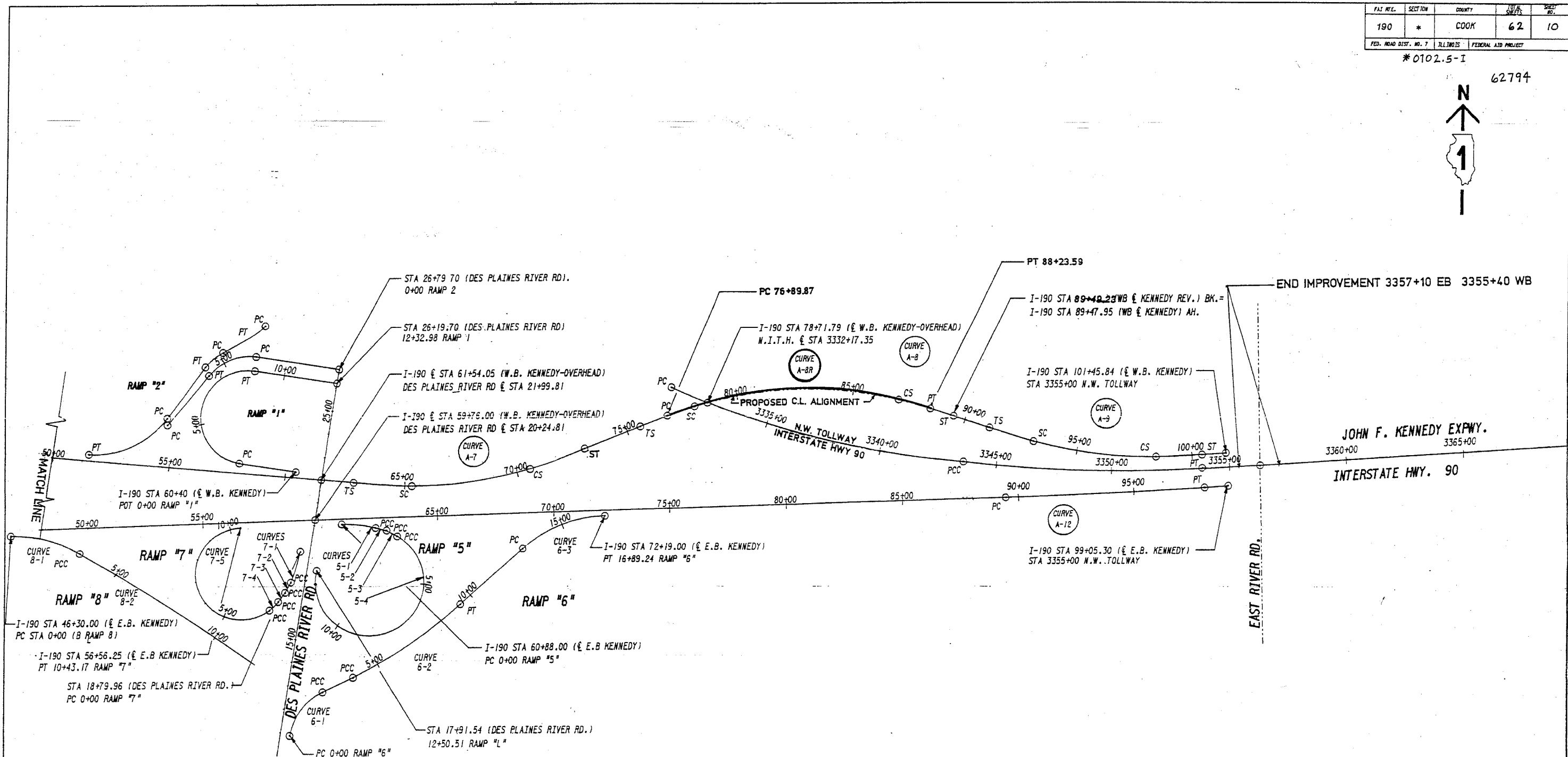


| F.A.T. NO. | SECTION | COUNTY | TOTAL SHEETS | SHEET NO. |
|-----------------------|---------|----------|---------------------|-----------|
| 190 | * | COOK | 62 | 10 |
| FED. ROAD DIST. NO. 7 | | ILLINOIS | FEDERAL AID PROJECT | |

#0102.5-1

62794



FOR INFORMATION ONLY

| | |
|---|--|
| STATE OF ILLINOIS DEPARTMENT OF TRANSPORTATION DISTRICT ONE | KENNEDY EXPRESSWAY F.A.T. ROUTE 190 REHABILITATION PROJECT |
| ALIGNMENT LAYOUT | |
| DONOHUE ENGINEERS AND ARCHITECTS Computer Aided Design & Drafting | designed by: RJB checked by: MRE graphics by: TPK |
| SCALE: 1"=200' | |

OPT/USUAL PREP: [unclear]
 DESIGNED BY: [unclear]
 CHECKED BY: [unclear]
 GRAPHICS BY: [unclear]
 DATE: [unclear]
 PROJECT NO.: 14031

designed by: RJB - MAS
 checked by: MRE
 graphics by: TPK - MLN
 Computer Aided Design & Drafting
 PROJECT NO.: 14031