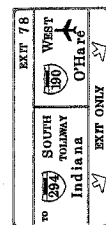


F.A.I. RTE.	SECTION	COUNTY	TOTAL SHEETS	SHEET NO.
90	0102.5-I	COOK	62	25
STA.	TO STA.			
FED. ROAD DIST. NO. 1 ILLINOIS FED. AID PROJECT				

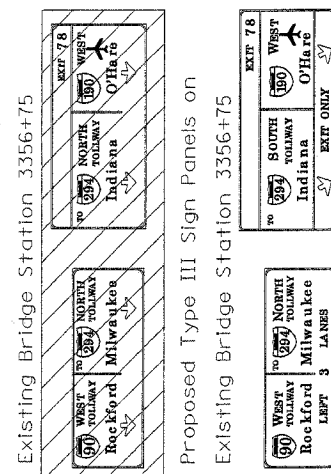
CONTRACT NO.

62794

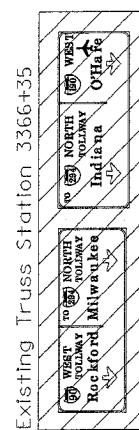


3349+00

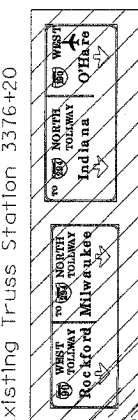
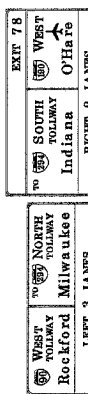
Proposed Type III Sign Panels on
Proposed Cantilever at Station 3349+00
For information only - work to be done by others



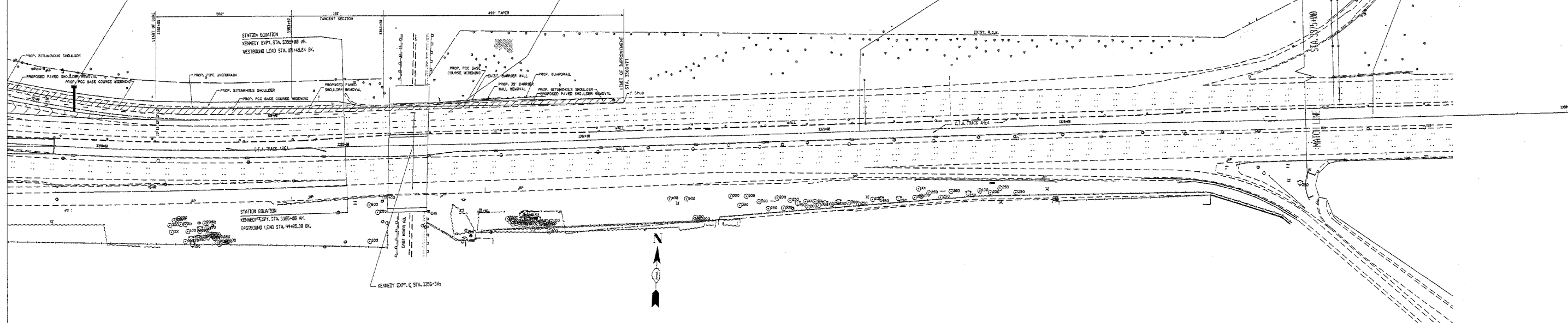
Proposed Type III Sign Panels on
Existing Bridge Station 3356+75



Proposed Type III Sign Panels on
Existing Truss Station 3366+35



Proposed Type III Sign Panels on
Existing Truss Station 3376+20



REVISIONS	
NAME	DATE

ILLINOIS DEPARTMENT OF TRANSPORTATION
FAI 90 (KENNEDY EXPRESSWAY)
I-190 RAMP REPAIR
STRIP MAP

SCALE: 1" = 100'
DATE: 05/11/04
DESIGNED BY: ROB
DRAWN BY: ROB
CHECKED BY: DAZ/CS